



[Watch Video](#) 

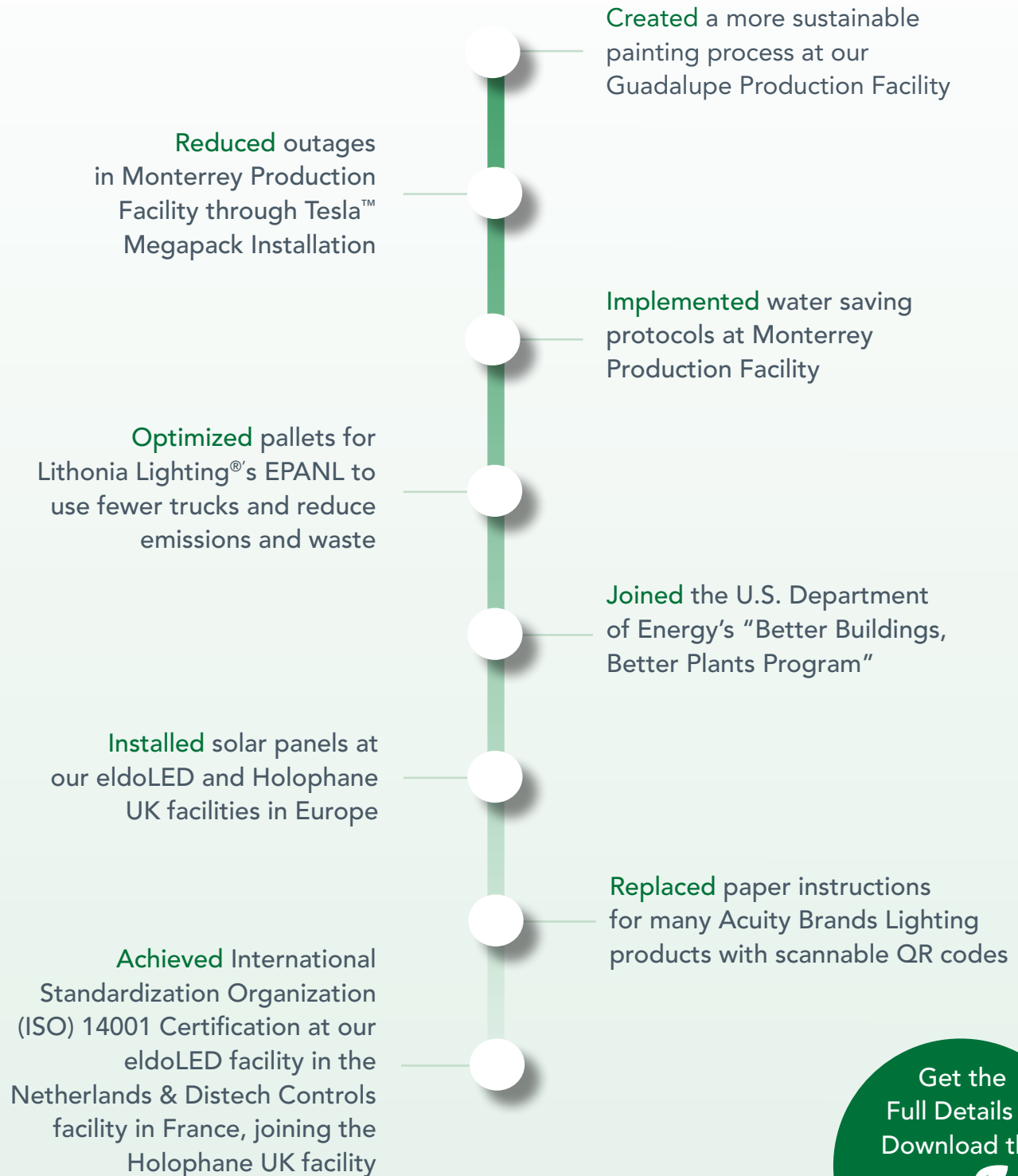


FEATURING  
**Adam Handler**  
*Director, Corporate Sustainability  
and Communications*

# EarthLIGHT For You: January 2023



# Carbon & Environmental Leadership: 2022 in Review



Get the Full Details & Download the  
**EarthLIGHT**  
Report

# Our Brands in the Spotlight



## Everyone Cares, MARK takes Action!

MARK Architectural Lighting continuously reviews their manufacturing process for potential environmental consequences and strives to avoid any adverse impact on the environment. Products are designed to minimize necessary raw materials, to avoid environmentally hazardous components, and to operate as efficiently as technology will allow.

[Learn More](#) 

---

## Think Forward with A-Light

We've challenged ourselves to think differently, looking at our design process, the materials we use, how we manufacture, and how we source and ship. All with one objective: to re-think how we develop products that are sustainable.

[Discover Products](#) 

The logo for a·light, featuring the text "a·light" in a lowercase, serif font. A thin red horizontal line is positioned under the word "light". The logo is centered within a light grey circle that has a series of thin, horizontal lines radiating from its right edge.

a·light

---

## Empowering Generations with Sustainable Lighting

With over 80 years in the industry, Gotham Lighting® has made sustainable lighting a key discipline in moving their people, culture, and business forward while preparing the world for the next generation.

[Find Out More](#) 



# Our Community



**Launched** a workforce development pilot program in partnership with Mayor Dickens, the City of Atlanta and Atlanta Technical College



**Partnered** with Trees Atlanta to maintain 100 trees along the Atlanta BeltLine Arboretum



**Improved** local environments across North America by participating in community waste-removal events



**Packaged** and delivered 100 STEM activity kits for patients at Children's Healthcare of Atlanta



**Donated** Lithonia Lighting® JBEL fixtures for the Atlanta Police Foundation's At-Promise Center, a youth crime diversion program facility



**Relit** Montgomery County 4-H Club facility to create a more energy-efficient and safer space to host events for the city's youth



# Sustainable #BeautifulSpaces



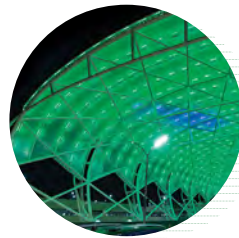
White Castle Headquarters  
**LEED Gold**  
Photographer: Cory Klein



515 Post Oak  
**LEED Silver**  
Photographer: Joe C. Aker



State Farm Arena  
**LEED Gold & WELL  
Health-Safety Rated**  
Photographer: Kyle Patton



Hartsfield-Jackson Atlanta  
International Airport -  
Domestic Terminal  
**LEED Silver**  
Photographer: Kyle Patton



University of Chicago - David  
Rubenstein Forum:  
**LEED Gold**  
Photographer: Brett Beyer



Ceridian Canada Ltd.  
**LEED Gold**  
Photographer:  
Gery Kopelow



KPMG Lakehouse  
**LEED Silver**  
Photographer:  
Chad Baumer Photography



Bountiful Clinic:  
**LEED Certified**  
Photographer: Aaron Shaw  
- Endeavour Architectural  
Photography



Alta View Hospital  
**LEED Certified**  
Photographer: Aaron Shaw  
- Endeavour Architectural  
Photography



Guardian Life Hudson Yards  
**LEED Gold**  
Photographer: Eric Laignel



Huntsman Cancer Institute  
**LEED Silver**  
Photographer: Endeavour  
Architectural Photography



SFO Consolidated  
Administration Campus  
**LEED Gold**  
Photographer: Mike Kelley



LPA Irvine Office  
Headquarters  
**LEED Certified & WELL  
Health-Safety Rated**  
Photographer:  
Cristian Costea  
(Costea Photography)



Wolf Point East  
**LEED Silver**  
Photographer:  
Richard Kosheluk



Discovery Green  
**LEED Gold**  
Photographer: Dee Zunker



5 Penn Plaza  
**LEED Gold**  
Photographer: Eric Perkins



650 Main  
**LEED Gold**  
Photographer: Endeavor  
Architectural Photography



Centro Canalejas  
**LEED Gold**  
Photographer:  
Alvaro Valdecantos  
& Imagen Subliminal



M Moser Associates, NYC  
**WELL Platinum**  
Photographer:  
Eric Laignel

Get Inspired 

# Resources For You



## Sustainability with Networked Lighting Controls

Networked lighting controls offer multiple strategies to significantly optimize energy usage and reduce overall costs, including trimming/scene control, support zones, controls embedded luminaires, retro-commissioning, grouped response to motion, and building management integration.

[Find Out More](#) >



## Podcast Series: Women in Sustainability and Enterprise

Women in Sustainability and Enterprise (WISE) is a podcast series from Acuity Brands created to elevate the voices and achievements of women within Acuity Brands and invites guest who are working towards a more sustainable environment and workplace.

[Listen Now](#) >



## Meeting the Metrics - Lighting and Today's Building Certification Programs

Learn more about how lighting contributes to building certification programs like LEED, WELL Building, and Living Building Challenge with our on-demand CEU course. Sign up for an Acuity Academy account and start learning.

[Check It Out](#) >

**Interested in more resources like this?**

Stay Connected with Designing with Lighting

[Sign Up Now](#) >