



WDGE4 LED

Architectural Wall Sconce



Catalog
Number

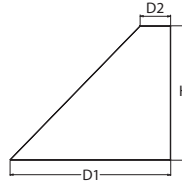
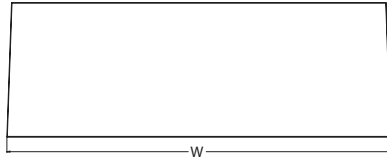
Notes

Type

Hit the Tab key or mouse over the page to see all interactive elements.

Specifications

Depth (D1):	10"
Depth (D2):	2"
Height:	9"
Width:	25"
Weight: (without options)	30.5 lbs



Introduction

The WDGE LED family is designed to meet specifier's every wall-mounted lighting need in a widely accepted shape that blends with any architecture. The clean rectilinear design comes in four sizes with lumen packages ranging from 1,200 to 25,000 lumens, providing a true site-wide solution. Embedded with nLight® AIR wireless controls, the WDGE family provides additional energy savings and code compliance.

WDGE4 has been designed to deliver up to 25,000 lumens through a precision refractive lens with wide distribution, perfect for augmenting the lighting from pole mounted luminaires.



Items marked by a shaded background qualify for the Design Select program and ship in 15 days or less. To learn more about Design Select, visit www.acuitybrands.com/designselect.
*See ordering tree for details

WDGE LED Family Overview

Luminaire	Optics	Standard EM, 0°C	Cold EM, -20°C	Sensor	Approximate Lumens (4000K, 80CRI)						
					P0	P1	P2	P3	P4	P5	P6
WDGE1 LED	Visual Comfort	4W		--	750	1,200	2,000	--	--	--	--
WDGE2 LED	Visual Comfort	10W	18W	Standalone / nLight	--	1,200	2,000	3,000	4,500	6,000	--
WDGE2 LED	Precision Refractive	10W	18W	Standalone / nLight	700	1,200	2,000	3,200	4,200	--	--
WDGE3 LED	Precision Refractive	15W	18W	Standalone / nLight	6,000	7,500	8,500	10,000	12,000	--	--
WDGE4 LED	Precision Refractive			Standalone / nLight	--	12,000	16,000	18,000	20,000	22,000	25,000

Ordering Information

EXAMPLE: WDGE4 LED P3 40K 70CRI R3 MVOLT SRM DDBXD

Series	Package	Color Temperature	CRI	Distribution	Voltage	Mounting																																
WDGE4 LED	<table border="1"> <tr><td>P1</td><td>P4</td></tr> <tr><td>P2</td><td>P5</td></tr> <tr><td>P3</td><td>P6</td></tr> </table>	P1	P4	P2	P5	P3	P6	<table border="1"> <tr><td>30K</td><td>3000K</td></tr> <tr><td>40K</td><td>4000K</td></tr> <tr><td>50K</td><td>5000K</td></tr> </table>	30K	3000K	40K	4000K	50K	5000K	<table border="1"> <tr><td>70CRI</td></tr> <tr><td>80CRI</td></tr> </table>	70CRI	80CRI	<table border="1"> <tr><td>R2</td><td>Type 2</td></tr> <tr><td>R3</td><td>Type 3</td></tr> <tr><td>R4</td><td>Type 4</td></tr> <tr><td>RFT</td><td>Forward Throw</td></tr> </table>	R2	Type 2	R3	Type 3	R4	Type 4	RFT	Forward Throw	<table border="1"> <tr><td>MVOLT</td></tr> <tr><td>347¹</td></tr> <tr><td>480¹</td></tr> </table>	MVOLT	347 ¹	480 ¹	<table border="1"> <tr><td>Shipped included</td></tr> <tr><td>SRM Surface mounting bracket</td></tr> <tr><td>ICW Indirect Canopy/Ceiling Washer bracket (dry/damp locations only)²</td></tr> </table>	Shipped included	SRM Surface mounting bracket	ICW Indirect Canopy/Ceiling Washer bracket (dry/damp locations only) ²	<table border="1"> <tr><td>Shipped separately</td></tr> <tr><td>AWS 3/8 inch Architectural wall spacer³</td></tr> <tr><td>PBBW Surface-mounted back box (top, left, right conduit entry). Use when there is no junction box available.³</td></tr> </table>	Shipped separately	AWS 3/8 inch Architectural wall spacer ³	PBBW Surface-mounted back box (top, left, right conduit entry). Use when there is no junction box available. ³
P1	P4																																					
P2	P5																																					
P3	P6																																					
30K	3000K																																					
40K	4000K																																					
50K	5000K																																					
70CRI																																						
80CRI																																						
R2	Type 2																																					
R3	Type 3																																					
R4	Type 4																																					
RFT	Forward Throw																																					
MVOLT																																						
347 ¹																																						
480 ¹																																						
Shipped included																																						
SRM Surface mounting bracket																																						
ICW Indirect Canopy/Ceiling Washer bracket (dry/damp locations only) ²																																						
Shipped separately																																						
AWS 3/8 inch Architectural wall spacer ³																																						
PBBW Surface-mounted back box (top, left, right conduit entry). Use when there is no junction box available. ³																																						

Options	Finish																																
<table border="1"> <tr><td>PE</td><td>Photocell, Button Type⁴</td></tr> <tr><td>DS</td><td>Dual switching (comes with 2 drivers and 2 light engines)⁵</td></tr> <tr><td>DMG</td><td>0-10V dimming wires pulled outside fixture (for use with an external control, ordered separately)⁵</td></tr> <tr><td>BCE</td><td>Bottom conduit entry for back box (PBBW). Total of 4 entry points.</td></tr> <tr><td>SPD10KV</td><td>10kV Surge pack</td></tr> <tr><td>CCE</td><td>Coastal Construction³</td></tr> </table>	PE	Photocell, Button Type ⁴	DS	Dual switching (comes with 2 drivers and 2 light engines) ⁵	DMG	0-10V dimming wires pulled outside fixture (for use with an external control, ordered separately) ⁵	BCE	Bottom conduit entry for back box (PBBW). Total of 4 entry points.	SPD10KV	10kV Surge pack	CCE	Coastal Construction ³	<table border="1"> <tr><td>DDBXD</td><td>Dark bronze</td></tr> <tr><td>DBLXD</td><td>Black</td></tr> <tr><td>DNAXD</td><td>Natural aluminum</td></tr> <tr><td>DWHXD</td><td>White</td></tr> <tr><td>DSSXD</td><td>Sandstone</td></tr> <tr><td>DBBTXD</td><td>Textured dark bronze</td></tr> <tr><td>DBLTXD</td><td>Textured black</td></tr> <tr><td>DNATXD</td><td>Textured natural aluminum</td></tr> <tr><td>DWHGXD</td><td>Textured white</td></tr> <tr><td>DSSTXD</td><td>Textured sandstone</td></tr> </table>	DDBXD	Dark bronze	DBLXD	Black	DNAXD	Natural aluminum	DWHXD	White	DSSXD	Sandstone	DBBTXD	Textured dark bronze	DBLTXD	Textured black	DNATXD	Textured natural aluminum	DWHGXD	Textured white	DSSTXD	Textured sandstone
PE	Photocell, Button Type ⁴																																
DS	Dual switching (comes with 2 drivers and 2 light engines) ⁵																																
DMG	0-10V dimming wires pulled outside fixture (for use with an external control, ordered separately) ⁵																																
BCE	Bottom conduit entry for back box (PBBW). Total of 4 entry points.																																
SPD10KV	10kV Surge pack																																
CCE	Coastal Construction ³																																
DDBXD	Dark bronze																																
DBLXD	Black																																
DNAXD	Natural aluminum																																
DWHXD	White																																
DSSXD	Sandstone																																
DBBTXD	Textured dark bronze																																
DBLTXD	Textured black																																
DNATXD	Textured natural aluminum																																
DWHGXD	Textured white																																
DSSTXD	Textured sandstone																																
<p>Standalone Sensors/Controls</p> <table border="1"> <tr><td>PIR</td><td>Bi-level (100/35%) motion sensor for 8-15' mounting heights. Intended for use on switched circuits with external dusk to dawn switching.</td></tr> <tr><td>PIRH</td><td>Bi-level (100/35%) motion sensor for 15-30' mounting heights. Intended for use on switched circuits with external dusk to dawn switching</td></tr> <tr><td>PIR1FC3V</td><td>Bi-level (100/35%) motion sensor for 8-15' mounting heights with photocell pre-programmed for dusk to dawn operation.</td></tr> <tr><td>PIR1FC3V</td><td>Bi-level (100/35%) motion sensor for 15-30' mounting heights with photocell pre-programmed for dusk to dawn operation.</td></tr> </table> <p>Networked Sensors/Controls</p> <table border="1"> <tr><td>NLTAIR2 PIR</td><td>Embedded wireless controls by nLight with Passive Infrared Occ sensor and on/off photocell for 8-15' mounting heights.</td></tr> <tr><td>NLTAIR2 PIRH</td><td>Embedded wireless controls by nLight with Passive Infrared Occ sensor and on/off photocell for 15'-30' mounting heights.</td></tr> <tr><td>NLTAIREM2 PIR</td><td>Embedded wireless controls by nLight with UL924 listed emergency operation, Passive Infrared Occ sensor and on/off photocell for 8-15' mounting heights</td></tr> <tr><td>NLTAIREM2 PIRH</td><td>Embedded wireless controls by nLight with UL924 listed emergency operation, Passive Infrared Occ sensor and on/off photocell for 15'-30' mounting heights</td></tr> </table> <p>See page 3 for out of box functionality</p>	PIR	Bi-level (100/35%) motion sensor for 8-15' mounting heights. Intended for use on switched circuits with external dusk to dawn switching.	PIRH	Bi-level (100/35%) motion sensor for 15-30' mounting heights. Intended for use on switched circuits with external dusk to dawn switching	PIR1FC3V	Bi-level (100/35%) motion sensor for 8-15' mounting heights with photocell pre-programmed for dusk to dawn operation.	PIR1FC3V	Bi-level (100/35%) motion sensor for 15-30' mounting heights with photocell pre-programmed for dusk to dawn operation.	NLTAIR2 PIR	Embedded wireless controls by nLight with Passive Infrared Occ sensor and on/off photocell for 8-15' mounting heights.	NLTAIR2 PIRH	Embedded wireless controls by nLight with Passive Infrared Occ sensor and on/off photocell for 15'-30' mounting heights.	NLTAIREM2 PIR	Embedded wireless controls by nLight with UL924 listed emergency operation, Passive Infrared Occ sensor and on/off photocell for 8-15' mounting heights	NLTAIREM2 PIRH	Embedded wireless controls by nLight with UL924 listed emergency operation, Passive Infrared Occ sensor and on/off photocell for 15'-30' mounting heights																	
PIR	Bi-level (100/35%) motion sensor for 8-15' mounting heights. Intended for use on switched circuits with external dusk to dawn switching.																																
PIRH	Bi-level (100/35%) motion sensor for 15-30' mounting heights. Intended for use on switched circuits with external dusk to dawn switching																																
PIR1FC3V	Bi-level (100/35%) motion sensor for 8-15' mounting heights with photocell pre-programmed for dusk to dawn operation.																																
PIR1FC3V	Bi-level (100/35%) motion sensor for 15-30' mounting heights with photocell pre-programmed for dusk to dawn operation.																																
NLTAIR2 PIR	Embedded wireless controls by nLight with Passive Infrared Occ sensor and on/off photocell for 8-15' mounting heights.																																
NLTAIR2 PIRH	Embedded wireless controls by nLight with Passive Infrared Occ sensor and on/off photocell for 15'-30' mounting heights.																																
NLTAIREM2 PIR	Embedded wireless controls by nLight with UL924 listed emergency operation, Passive Infrared Occ sensor and on/off photocell for 8-15' mounting heights																																
NLTAIREM2 PIRH	Embedded wireless controls by nLight with UL924 listed emergency operation, Passive Infrared Occ sensor and on/off photocell for 15'-30' mounting heights																																

Accessories

Ordered and shipped separately.

WDGEAWS DDBXD	WDGE 3/8inch Architectural Wall Spacer (specify finish)
WDGE4PBBW DDBXD U	WDGE4 surface-mounted back box (specify finish)

NOTES

- 347V and 480V not available with DS.
- Not qualified for DLC.
- For PBBW and AWS with CCE option, require an RFA.
- PE not available in 480V and with sensors/controls.
- DS and DMG not available with sensors/controls.



COMMERCIAL OUTDOOR

One Lithonia Way • Conyers, Georgia 30012 • Phone: 1-800-705-SERV (7378) • www.lithonia.com
© 2019-2024 Acuity Brands Lighting, Inc. All rights reserved.

WDGE4 LED
Rev. 12/09/24

Lumen Output

Lumen values are from photometric tests performed in accordance with IESNA LM-79-08. Data is considered to be representative of the configurations shown, within the tolerances allowed by Lighting Facts. Contact factory for performance data on any configurations not shown here.

Performance Package	System Watts	Dist. Type	30K (3000K, 70 CRI)					40K (4000K, 70 CRI)					50K (5000K, 70 CRI)				
			Lumens	LPW	B	U	G	Lumens	LPW	B	U	G	Lumens	LPW	B	U	G
P1	77W	R2	11,173	146	2	0	1	12,125	158	2	0	1	12,125	158	2	0	1
		R3	10,951	143	2	0	2	11,884	155	2	0	2	11,884	155	2	0	2
		R4	11,224	147	2	0	2	12,180	159	2	0	2	12,180	159	2	0	2
		RFT	11,104	145	2	0	2	12,050	157	2	0	2	12,050	157	2	0	2
P2	106W	R2	14,960	141	3	0	2	16,235	153	3	0	2	16,235	153	3	0	2
		R3	14,663	138	2	0	2	15,912	150	2	0	3	15,912	150	2	0	3
		R4	15,028	141	2	0	2	16,308	153	2	0	3	16,308	153	2	0	3
		RFT	14,868	140	2	0	2	16,134	152	2	0	2	16,134	152	2	0	2
P3	123W	R2	16,993	138	3	0	2	18,441	150	3	0	2	18,441	150	3	0	2
		R3	16,655	136	2	0	3	18,074	147	3	0	3	18,074	147	3	0	3
		R4	17,070	139	2	0	3	18,524	151	3	0	3	18,524	151	3	0	3
		RFT	16,888	138	2	0	3	18,327	149	2	0	3	18,327	149	2	0	3
P4	140W	R2	18,958	136	3	0	2	20,573	147	3	0	2	20,573	147	3	0	2
		R3	18,581	133	3	0	3	20,164	144	3	0	3	20,164	144	3	0	3
		R4	19,044	136	3	0	3	20,667	148	3	0	3	20,667	148	3	0	3
		RFT	18,841	135	2	0	3	20,446	146	3	0	3	20,446	146	3	0	3
P5	156W	R2	20,919	134	3	0	2	22,702	146	3	0	2	22,702	146	3	0	2
		R3	20,503	132	3	0	3	22,250	143	3	0	3	22,250	143	3	0	3
		R4	21,014	135	3	0	3	22,804	147	3	0	4	22,804	147	3	0	4
		RFT	20,790	134	3	0	3	22,561	145	3	0	3	22,561	145	3	0	3
P6	185W	R2	23,725	128	3	0	2	25,746	139	3	0	2	25,746	139	3	0	2
		R3	23,253	126	3	0	4	25,234	136	3	0	4	25,234	136	3	0	4
		R4	23,832	129	3	0	4	25,863	140	3	0	4	25,863	140	3	0	4
		RFT	23,578	127	3	0	3	25,587	138	3	0	4	25,587	138	3	0	4

Electrical Load

Performance Package	System Watts	Current (A)					
		120V	208V	240V	277V	347V	480V
P1	77W	0.635	0.366	0.319	0.280	0.223	0.161
P2	106W	0.889	0.514	0.449	0.395	0.309	0.228
P3	123W	1.014	0.585	0.510	0.447	0.356	0.258
P4	140W	1.159	0.668	0.582	0.509	0.403	0.294
P5	156W	1.296	0.743	0.647	0.564	0.451	0.326
P6	185W	1.512	0.864	0.751	0.655	0.526	0.378

Lumen Multiplier for 80CRI

CCT	Multiplier
30K	0.891
40K	0.906
50K	0.906

Lumen Ambient Temperature (LAT) Multipliers

Use these factors to determine relative lumen output for average ambient temperatures from 0-40°C (32-104°F).

Ambient	Lumen Multiplier
0°C / 32°F	1.05
10°C / 50°F	1.03
20°C / 68°F	1.01
25°C / 77°F	1.00
30°C / 86°F	0.99
40°C / 104°F	0.97

Projected LED Lumen Maintenance

Data references the extrapolated performance projections for the platforms noted in a 25°C ambient, based on 10,000 hours of LED testing (tested per IESNA LM-80-08 and projected per IESNA TM-21-11).

To calculate LLF, use the lumen maintenance factor that corresponds to the desired number of operating hours below. For other lumen maintenance values, contact factory.

Operating Hours	0	25,000	50,000	100,000
Lumen Maintenance Factor	1.0	>0.98	>0.96	>0.92

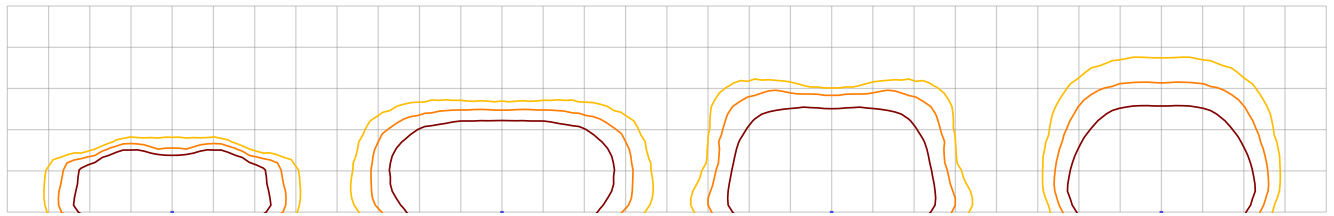
Photometric Diagrams

To see complete photometric reports or download .ies files for this product, visit the Lithonia Lighting WDGE LED homepage. Tested in accordance with IESNA LM-79 and LM-80 standards.

LEGEND

- 0.25 fc
- 0.5 fc
- 1.0 fc

MH = 18ft
Grid = 18ft x 18ft



WDGE4 LED P2 40K 70CRI R2

WDGE4 LED P2 40K 70CRI R3

WDGE4 LED P2 40K 70CRI R4

WDGE4 LED P2 40K 70CRI RFT

Motion/Ambient Sensor (PIR, PIRH)

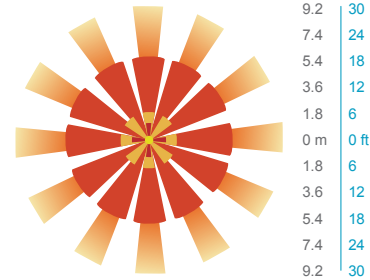
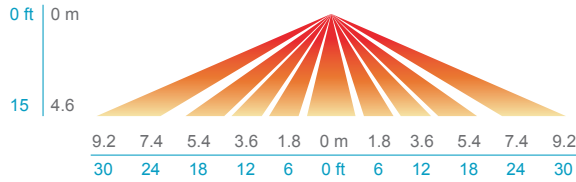
Motion/Ambient sensor (Sensor Switch MSOD) is integrated into the the luminaire. The sensor provides both Motion and Daylight based dimming of the luminaire. For motion detection, the sensor utilizes 100% Digital Passive Infrared (PIR) technology that is tuned for walking size motion while preventing false tripping from the environment. The integrated photocell enables additional energy savings during daytime periods when there is sufficient daylight. Optimize sensor coverage by either selecting PIR or PIRH option. PIR option comes with a sensor lens that is optimized to provide maximum coverage for mounting heights between 8-15ft, while PIRH is optimized for 15-40ft mounting height.

Networked Control (NLTAIR2)

nLight® AIR is a wireless lighting controls platform that allows for seamless integration of both indoor and outdoor luminaires. Five-tier security architecture, 900 MHz wireless communication and app (CLAIRITY™ Pro) based configurability combined together make nLight® AIR a secure, reliable and easy to use platform.

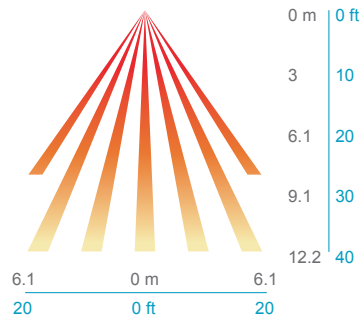
PIR

HIGH VIEW

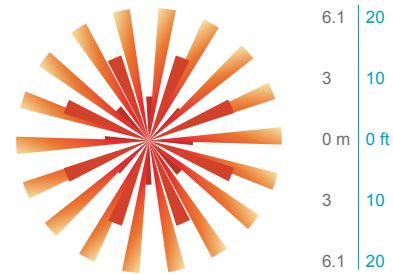


PIRH

SIDE VIEW



TOP VIEW



Option	Dim Level	High Level (when triggered)	Photocell Operation	Motion Time Delay	Ramp-down Time	Ramp-up Time
PIR or PIRH	Motion - 3V (37% of full output) Photocell - 0V (turned off)	10V (100% output)	Enabled @ 5fc	5 min	5 min	Motion - 3 sec Photocell - 45 sec
PIR1FC3V, PIRH1FC3V	Motion - 3V (37% of full output) Photocell - 0V (turned off)	10V (100% output)	Enabled @ 1fc	5 min	5 min	Motion - 3 sec Photocell - 45 sec
NLTAIR2 PIR, NLTAIR2 PIRH (out of box)	Motion - 3V (37% of full output) Photocell - 0V (turned off)	10V (100% output)	Enabled @ 5fc	7.5 min	5 min	Motion - 3 sec Photocell - 45 sec

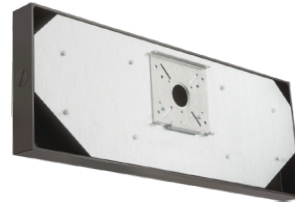
UL 924 Response – nLight AIR Devices with EM Option

- NLTAIREM2 devices will remain at their high-end trim and ignore wireless lighting control commands, unless a normal-power-sensed (NPS) broadcast is received at least every 8 seconds.
- Using the CLAIRITY+ mobile app, NLTAIREM2 devices must be associated with a group that includes a normal power sensing device to receive NPS broadcasts.
- The non-emergency devices, NLTAIR2 PIR and NLTAIR2 PIRH, with version 3.4 or later firmware can be used for normal power sensing.



**NLTAIR2 PIR – nLight AIR
Motion/Ambient Sensor**

D = 10"
H = 11"
W = 25"



PBBW – Surface-Mounted Back Box
Use when there is no junction box available.

D = 1.75"
H = 9"
W = 25"



AWS – 3/8inch Architectural Wall Spacer

D = 0.38"
H = 4.4"
W = 7.5"

FEATURES & SPECIFICATIONS

INTENDED USE

Common architectural look, with clean rectilinear shape, of the WDGE LED was designed to blend with any type of construction, whether it be tilt-up, frame or brick. Applications include commercial offices, warehouses, hospitals, schools, malls, restaurants, and other commercial buildings.

CONSTRUCTION

The single-piece die-cast aluminum housing to optimize thermal transfer from the light engine and promote long life. The driver is mounted in direct contact with the casting for a low operating temperature and long life. The die-cast door frame is fully gasketed with a one-piece solid silicone gasket to keep out moisture and dust, providing an IP66 rating for the luminaire.

FINISH

Exterior painted parts are protected by a zinc-infused Super Durable TGIC thermoset powder coat finish that provides superior resistance to corrosion and weathering. A tightly controlled multi-stage process ensures a 3 mils thickness for a finish that can withstand extreme climate changes without cracking or peeling. Standard Super Durable colors include dark bronze, black, natural aluminum, sandstone and white. Available in textured and non-textured finishes.

OPTICS

Individually formed acrylic lenses are engineered for superior application efficiency which maximizes the light in the areas where it is most needed. Light engines are available in 3000 K, 4000 K or 5000 K configurations. The WDGE LED has zero uplight and qualifies as a Nighttime Friendly™ product, meaning it is consistent with the LEED® and Green Globes™ criteria for eliminating wasteful uplight.

ELECTRICAL

Light engine consists of high-efficacy LEDs mounted to metal-core circuit boards to maximize heat dissipation and promote long life (up to L92/100,000 hours at 25°C). The electronic driver has a power factor of >90%, THD <20%. Luminaire comes with built in 6kV surge protection, which meets a minimum Category C low exposure (per ANSI/IEEE C62.41.2). Fixture ships standard with 0-10v dimmable driver.

INSTALLATION

A universal mounting plate with integral mounting support arms allows the fixture to hinge down for easy access while making wiring connections. The 3/8" Architectural Wall Spacer (AWS) can be used to create a floating appearance or to accommodate small imperfections in the wall surface. The ICW option can be used to mount the luminaire inverted for indirect lighting in dry and damp locations. Design can withstand up to a 1.5 G vibration load rating per ANSI C136.31.

LISTINGS

CSA certified to U.S. and Canadian standards. Light engines are IP65 rated; luminaire is IP65 rated. PIR options are rated for wet location. Rated for -40°C minimum ambient. DesignLights Consortium® (DLC) Premium qualified product and DLC qualified product. Not all versions of this product may be DLC Premium qualified or DLC qualified. Please check the DLC Qualified Products List at www.designlights.org/QPL to confirm which versions are qualified. International Dark-Sky Association (IDA) Fixture Seal of Approval (FSA) is available for all products on this page utilizing 3000K color temperature and SRM mounting only.

GOVERNMENT PROCUREMENT

BABA – Build America Buy America: Product qualifies as produced in the United States under the definitions of the Build America, Buy America Act. Please refer to www.acuitybrands.com/buy-american for additional information.

WARRANTY

5-year limited warranty. This is the only warranty provided and no other statements in this specification sheet create any warranty of any kind. All other express and implied warranties are disclaimed. Complete warranty terms located at: www.acuitybrands.com/support/warranty/terms-and-conditions

Note: Actual performance may differ as a result of end-user environment and application. All values are design or typical values, measured under laboratory conditions at 25 °C. Specifications subject to change without notice.