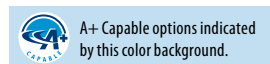


FEX LED

Low-Profile Enclosed and Gasketed



ORDERING INFORMATION Lead times will vary depending on options selected. Consult with your sales representative. **Example:** FEX L48 4000LM FPCL WD MVOLT GZ10 40K 80CRI DWHXD

Series	Length	Nominal Lumens		Diffuser	Distribution	Voltage		Driver	Color temperature	CRI						
FEX	L24 24"	2000LM	2,000 lumens	FPCL	Flat Poly Clear, .125" thick	MD	Medium	MVOLT	120-277, 50/60hz	GZ10	0 - 10V dimming	30K	3000K	80CRI	80 CRI	
		3000LM	3,000 lumens			WD	Wide					35K	3500K	90CRI	90 CRI	
		4000LM	4,000 lumens	FPFL	Flat Poly Frost, .125" thick	PGD	Parking Garage	HVOLT	347-480V, 50/60hz			40K	4000K			
		5000LM	5,000 lumens									50K	5000K			
		6000LM	6,000 lumens	FGFL	Flat Glass Frost, .125" thick			120	120V, 50/60hz							
		7000LM	7,000 lumens					277	277V, 50/60hz							
		8000LM	8,000 lumens	FGCL	Flat clear glass, .125" thick			347	347V, 50/60hz							
		9000LM	9,000 lumens					480	480V, 50/60hz							
	L48 48"	4000LM	4,000 lumens													
		6000LM	6,000 lumens													
		8000LM	8,000 lumens													
		10000LM	10,000 lumens													
		12000LM	12,000 lumens													
		14000LM	14,000 lumens													
		15000LM	15,000 lumens													
		18000LM	18,000 lumens													
		24000LM	24,000 lumens													
		28000LM	28,000 lumens													

Options	Finish
Emergency: E10WLCP Power Sentry® PS1055MCP, 10W internal constant power emergency driver, 5°C min, UL924 Compliant, Certified in CA Title 20 MAEDBS (120-277) (LINK) ‡ BE6WCP Cold Weather, 6W internal emergency driver, -20°C min, UL924 Compliant, Certified in CA Title 20 MAEDBS (120 or 277V) ‡ Other Options: BAA Buy America(n) Act Compliant IP67 Semi-submersible gasket kit ‡ PMP4X Pendant monopoint (L24 only) ‡ RMB A Angled rigid mount bracket ‡ RMBK Rigid mount bracket ‡ RMBU Rigid mount U-bolt ‡ SPD10KV 10kV Surge Protection Device 120V-277V ‡ SPD10KVH 10kV Surge Protection Device 347V-480V ‡	DWHXD CR White, super durable, corrosion resistant DBLXD CR Black, super durable, corrosion resistant DNAXD CR Natural aluminum, super durable, corrosion resistant
Cordsets: CPSB16YWL Brad Harrison® Mini-Change® cordset with male connector, 16 gauge, 3 conductors, yellow, 6 foot ‡ CPSB16YWL12FT Brad Harrison® Mini-Change® cordset with male connector, 16 gauge, 3 conductors, yellow, 12 foot ‡ CNP16WWL Cord only (no plug), 16 gauge, 3 conductors, white, 6ft ‡ CNP16WWL12FT Cord only (no plug), 16 gauge, 3 conductors, white, 12ft ‡ CNP16CDWWL Cord only (no plug), 16 gauge, 5 conductors, includes 0-10V dimming leads, white, 6ft ‡ CNP164CWWL Cord only (no plug), 16 gauge, 4 conductors, white, 6ft ‡	
Individual Sensors: ‡ SBGR10 360° Low Mount Sensor, (8-15' mounting heights), on/off occupancy (LINK) SBGR10 D 3V 360° Low Mount sensor, (8-15' mounting heights), high/low occupancy dimming (bi-level) (LINK) SBGR10 P 360° Low Mount Sensor, (8-15' mounting heights), on/off photocell (LINK) nLight® Air Wireless: NLTAIR2 RIO nLight® Air Generation 2 enabled, fixture embedded network interface, 0-10V dimming output (LINK) ‡ NLTAIR2 RSBG6 nLight® Air Generation 2 enabled, 360° high mount sensor, (15-30' mounting heights) (LINK) ‡ NLTAIR2 RSBG10 nLight® Air Generation 2 enabled, 360° low mount sensor, (8-15' mounting heights) (LINK) ‡	

NOTE: ‡ indicates option chosen has ordering restrictions. Please reference ordering restrictions chart.

Accessories: Order as separate catalog number.			
FEXRMBK	Rigid mount bracket (QTY of 1) ‡	FEXRMB A	Angle mount bracket (QTY of 2) ‡
FEXRMBK L24 3G	Rigid mount bracket kit for (L24) 2' fixtures, 3G rated (QTY of 2) ‡	FEXRMBU	Rigid mount U-bolt bracket (QTY of 2) ‡
FEXRMBK L48 3G	Rigid mount bracket kit for (L48) 4' fixtures, 3G rated (QTY of 3) ‡	FEXSMB	Replacement standard mounting brackets (QTY of 2)

Option value ordering restrictions are on page 3.

FEX LED

Low-Profile Enclosed and Gasketed

* Option Value Ordering Restrictions & Notes	
Option value	Restriction
BE6WCP	Only available in 120V or 277V. Requires SPD10KV or SPD10KVH option. Ambient limited to 35°C. Not available in L24 8000LM - 9000LM OR L48 15000LM- 28000LM. Utilizes Bodine BSL36 Cold EM driver.
CPSB16YWL	Not available with E10WLCP or BE6WCP. Utilizes cordset part number: 103002A01F0702. Not NEMA4X rated.
CPSB16YWL12FT	Not available with E10WLCP or BE6WCP. Utilizes cordset part number: 103002A01F1302. Not NEMA4X rated.
CNP16WWL, CNP16WWL12FT	Not available with E10WLCP or BE6WCP. Not NEMA4X rated.
CNP165CDWWL	Not available with E10WLCP or BE6WCP. Not available with controls. Not NEMA4X rated.
CNP164CWWL	Only available with E10WLCP or BE6WCP. Not NEMA4X rated.
E10WLCP	Only available in MVOLT. Requires SPD10KV or SPD10KVH option. Ambient limited to 35°C. Not available in L24 8000LM - 9000LM OR L48 15000LM- 28000LM. Utilizes Power Sentry® PS1055LCP EM driver.
EMXRMB	Available for surface angle (wall or ceiling) mounting applications. Bracket can be set to 22.5°, 45° or 90° angles. Not NSF rated.
FEXRMBK	A minimum QTY of 2 brackets are required to mount a fixture. For 3G vibration rated applications, a QTY of 2 brackets is required for L24 (2FT) and a QTY of 3 brackets is required for L48 (4FT). Available for surface (ceiling or wall) and suspended (chain or cable) mounting applications.
FEXRMBK L24 3G	QTY of 2 brackets for L24 (2FT). Available for surface (ceiling or wall) and suspended (chain or cable) mounting applications. 3G vibration rated.
FEXRMBK L48 3G	QTY of 3 brackets for L48 (4FT). Available for surface (ceiling or wall) and suspended (chain or cable) mounting applications. 3G vibration rated.
FEXRMBU	Available for pole (1½" trade size pipe) mounting applications.
FEXSMB	Included with every fixture unless a different mounting option is chosen (RMB, RMBK or RMBU). Available for surface (ceiling or wall) and suspended (chain or cable) mounting applications.
Individual Sensors	Not available with IP67 option. IP66 rated. Not NEMA4X rated.
IP67	Not available with individual controls or nLight® Air Wireless. Not IP67 rated if fixture is mounted facing upward as water can pool on the lens.
NLTAIR2 RIO	Not available with HVOLT, 347 or 480 with 2000LM or 3000LM. Not available with IP67 option. IP66 rated. Not NEMA4X rated.
NLTAIR2 RSBG6, NLTAIR2 RSBG10	Not available with HVOLT, 347 or 480 with 2000LM or 3000LM. Not available with IP67 option. IP66 rated. Not NEMA4X rated.
PMP4X	18" wiring leads exiting monopoint hub. Not available with BE6WCP or E10WLCP battery options or with any sensors.
RMB	Available for surface angle (wall or ceiling) mounting applications. Bracket can be set to 22.5°, 45° or 90° angles. Not NSF rated.
RMBK	A QTY of 2 brackets will be included for L24 (2FT) and a QTY of 3 brackets will be included for L48 (4FT). Available for surface (ceiling or wall) and suspended (chain or cable) mounting applications. 3G vibration rated.
RMBU	Available for pole (1½" trade size pipe) mounting applications.
SPD10KV	Not available in HVOLT. Required with E10WLCP, SBGR or NLTAIR2 sensors.
SPD10KVH	Not available in MVOLT. Required with E10WLCP, SBGR or NLTAIR2 sensors.

EMERGENCY LUMEN OUTPUT

<p>How to Estimate Delivered Lumens in Emergency Mode</p> <p>Use the formula below to estimate the delivered lumens in emergency mode</p> <p>Delivered Lumens = P x LPW</p> <p>P = Output power of emergency driver</p> <p>LPW = Lumen per watt rating of the luminaire. (See charts on pages 4 and 5)</p> <p>The LPW rating is also available at Designlight Consortium</p> <p>P = 10 watts for E10WCP</p> <p>P = 6 watts for BE6WCP</p>

Emergency Lumen Output Example - 10 Watt Battery

Approximate Luminaire Efficacy	Approximate Lumens at 1 Minute	Approximate Lumens at 45 Minutes	Approximate Lumens at 90 Minutes
100 LPW	1000	1000	1000
110 LPW	1100	1100	1100
120 LPW	1200	1200	1200
130 LPW	1300	1300	1300
140 LPW	1400	1400	1400
150 LPW	1500	1500	1500

FEX LED

Low-Profile Enclosed and Gasketed

OPERATIONAL DATA (80 CRI*, MD**, DWH***)

Length	Package	Input Wattage	CCT	FPCL	FPFL	FGCL	FGFL
				Lumens (LPW)	Lumens (LPW)	Lumens (LPW)	Lumens (LPW)
L24	2000LM	13.7	30K	1911 (139)	1478 (108)	1922 (140)	1659 (121)
			35K	1949 (142)	1508 (110)	1961 (143)	1693 (124)
			40K	2132 (156)	1649 (120)	2145 (157)	1852 (135)
			50K	2066 (151)	1598 (117)	2078 (152)	1794 (131)
	3000LM	20.0	30K	2862 (143)	2214 (110)	2879 (144)	2485 (124)
			35K	2920 (146)	2259 (113)	2937 (147)	2536 (126)
			40K	3193 (159)	2470 (123)	3212 (160)	2773 (138)
			50K	3094 (154)	2393 (119)	3112 (155)	2687 (134)
	4000LM	27.5	30K	3851 (140)	2979 (108)	3874 (141)	3345 (121)
			35K	3929 (143)	3040 (110)	3953 (144)	3413 (124)
			40K	4298 (156)	3325 (121)	4324 (157)	3733 (136)
			50K	4164 (151)	3221 (117)	4189 (152)	3616 (131)
	5000LM	33.2	30K	4670 (141)	3613 (109)	4698 (141)	4056 (122)
			35K	4765 (143)	3686 (111)	4793 (144)	4138 (125)
			40K	5211 (157)	4032 (121)	5243 (158)	4526 (136)
			50K	5049 (152)	3906 (118)	5079 (153)	4385 (132)
	6000LM	39.6	30K	5535 (140)	4282 (108)	5568 (140)	4807 (121)
			35K	5648 (142)	4369 (110)	5681 (143)	4905 (124)
			40K	6177 (156)	4779 (120)	6214 (157)	5365 (135)
			50K	5985 (151)	4630 (117)	6020 (152)	5198 (131)
	7000LM	46.3	30K	6304 (136)	4877 (105)	6342 (137)	5475 (118)
			35K	6432 (139)	4976 (107)	6470 (140)	5586 (121)
			40K	7035 (152)	5442 (118)	7077 (153)	6110 (132)
			50K	6815 (147)	5272 (114)	6856 (148)	5919 (128)
	8000LM	54.5	30K	7311 (134)	5656 (104)	7355 (135)	6349 (117)
			35K	7459 (137)	5770 (106)	7504 (138)	6478 (119)
			40K	8158 (150)	6311 (116)	8207 (151)	7086 (130)
			50K	7904 (145)	6115 (112)	7951 (146)	6865 (126)
	9000LM	62.5	30K	8234 (132)	6370 (102)	8283 (133)	7151 (114)
			35K	8401 (134)	6499 (104)	8451 (135)	7296 (117)
			40K	9189 (147)	7108 (114)	9244 (148)	7980 (128)
			50K	8902 (142)	6887 (110)	8956 (143)	7732 (124)

* For 90CRI, reduce lumen output by 17.5%

** For WD reduce output by 5.9%, PGD reduce output by 10.8%

*** For DG reduce output by 7.1%, DBL reduce output by 11.4%

FEX LED

Low-Profile Enclosed and Gasketed

OPERATIONAL DATA (80 CRI*, MD**, DWH***)

Length	Package	Input Wattage	CCT	FPCL	FPFL	FGCL	FGFL
				Lumens (LPW)	Lumens (LPW)	Lumens (LPW)	Lumens (LPW)
L48	4000LM	27.2	30K	3835 (141)	2967 (109)	3858 (141)	3331 (122)
			35K	3913 (144)	3027 (111)	3936 (144)	3398 (125)
			40K	4280 (157)	3311 (121)	4305 (158)	3717 (136)
			50K	4146 (152)	3208 (118)	4171 (153)	3601 (132)
	6000LM	39.5	30K	5598 (142)	4331 (110)	5632 (143)	4862 (123)
			35K	5712 (145)	4419 (112)	5746 (145)	4961 (126)
			40K	6247 (158)	4833 (122)	6285 (159)	5426 (137)
			50K	6053 (153)	4682 (118)	6089 (154)	5257 (133)
	8000LM	53.4	30K	7396 (139)	5722 (107)	7441 (139)	6424 (120)
			35K	7546 (141)	5838 (109)	7592 (142)	6554 (123)
			40K	8254 (155)	6385 (120)	8303 (156)	7168 (134)
			50K	7997 (150)	6186 (116)	8044 (151)	6945 (130)
	10000LM	66.6	30K	9476 (142)	7331 (110)	9533 (143)	8230 (124)
			35K	9669 (145)	7480 (112)	9727 (146)	8397 (126)
			40K	10575 (159)	8181 (123)	10638 (160)	9184 (138)
			50K	10245 (154)	7926 (119)	10307 (155)	8898 (134)
	12000LM	76.2	30K	10766 (141)	8329 (109)	10831 (142)	9350 (123)
			35K	10985 (144)	8498 (112)	11050 (145)	9540 (125)
			40K	12014 (158)	9294 (122)	12086 (159)	10434 (137)
			50K	11640 (153)	9005 (118)	11710 (154)	10109 (133)
	14000LM	90.0	30K	12570 (140)	9724 (108)	12645 (140)	10917 (121)
			35K	12825 (142)	9921 (110)	12901 (143)	11138 (124)
			40K	14027 (156)	10851 (121)	14111 (157)	12182 (135)
			50K	13590 (151)	10513 (117)	13671 (152)	11803 (131)
	15000LM	97.6	30K	13418 (137)	10381 (106)	13499 (138)	11654 (119)
			35K	13691 (140)	10591 (108)	13773 (141)	11890 (122)
			40K	14974 (153)	11584 (119)	15064 (154)	13005 (133)
			50K	14507 (149)	11223 (115)	14594 (149)	12600 (129)
	18000LM	121.8	30K	16070 (132)	12432 (102)	16166 (133)	13957 (115)
			35K	16396 (135)	12684 (104)	16494 (135)	14240 (117)
			40K	17933 (147)	13873 (114)	18040 (148)	15575 (128)
			50K	17374 (143)	13441 (110)	17478 (143)	15089 (124)
	24000LM	167.1	30K	22395 (134)	17325 (104)	22529 (135)	19450 (116)
			35K	22850 (137)	17677 (106)	22987 (138)	19845 (119)
			40K	24992 (150)	19334 (116)	25141 (151)	21706 (130)
			50K	24213 (145)	18732 (112)	24358 (146)	21029 (126)
	28000LM	210.5	30K	25302 (120)	19574 (93)	25454 (121)	21975 (104)
			35K	25816 (123)	19971 (95)	25970 (123)	22421 (107)
			40K	28236 (134)	21844 (104)	28405 (135)	24523 (117)
			50K	27356 (130)	21163 (101)	27519 (131)	23759 (113)

* For 90CRI, reduce lumen output by 17.5%

** For WD reduce output by 5.9%, PGD reduce output by 10.8%

*** For DG reduce output by 7.1%, DBL reduce output by 11.4%

LAT TABLE

Ambient Temp °C	L24								L48									
	2000LM	3000LM	4000LM	5000LM	6000LM	7000LM	8000LM	9000LM	4000LM	6000LM	8000LM	10000LM	12000LM	14000LM	15000LM	18000LM	24000LM	28000LM
25°C	1.00	1.00	1.00	1.00	1.00	1.00	1.00	1.00	1.00	1.00	1.00	1.00	1.00	1.00	1.00	1.00	1.00	1.00
30°C	0.99	0.99	0.99	0.99	0.99	0.99	0.99	0.99	0.99	0.99	0.99	0.99	0.99	0.99	0.99	0.99	0.99	0.99
35°C	0.99	0.99	0.99	0.99	0.99	0.99	0.98	0.98	0.99	0.99	0.98	0.98	0.98	0.98	0.98	0.98	0.98	0.98
40°C	0.98	0.98	0.98	0.98	0.98	0.98	0.98	0.98	0.98	0.98	0.98	0.98	0.98	0.98	0.98	0.98	0.98	0.97
45°C	0.97	0.97	0.97	0.97	0.97	0.97	0.97	0.97	0.97	0.97	0.97	0.97	0.97	0.97	0.97	0.97	NA	NA
50°C	0.96	0.96	0.96	0.96	0.96	0.96	0.96	0.96	0.96	0.96	0.96	0.96	0.96	0.96	0.96	0.96	NA	NA
55°C	0.96	0.96	0.96	0.96	0.95	0.95	0.95	0.95	0.96	0.95	0.95	0.95	0.95	0.95	0.95	0.95	NA	NA
60°C	0.95	0.95	0.95	0.95	0.95	0.95	0.95	0.95	0.95	0.95	0.95	0.95	0.95	0.95	0.94	0.94	NA	NA
65°C	0.94	0.94	0.94	0.94	0.94	NA	NA	NA	0.94	0.94	0.94	0.94	NA	NA	NA	NA	NA	NA
70°C	NA	NA	NA	NA	NA	NA	NA	NA	0.93	0.93	0.93	0.93	NA	NA	NA	NA	NA	NA

FEX LED

Low-Profile Enclosed and Gasketed

CSA LISTED AMBIENT RATING*

		Standard	E10WCP Battery	BE6WCP Battery	RSBG, RIO, SBGR Controls
L24	2000LM	65°C	5°C - 35°C	-20°C - 35°C	60°C
	3000LM	65°C	5°C - 35°C	-20°C - 35°C	60°C
	4000LM	65°C	5°C - 35°C	-20°C - 35°C	60°C
	5000LM	65°C	5°C - 35°C	-20°C - 35°C	60°C
	6000LM	65°C	5°C - 35°C	-20°C - 35°C	60°C
	7000LM	60°C	5°C - 35°C	-20°C - 35°C	60°C
	8000LM	60°C	-	-	60°C
	9000LM	60°C	-	-	60°C
L48	4000LM	70°C	5°C - 35°C	-20°C - 35°C	60°C
	6000LM	70°C	5°C - 35°C	-20°C - 35°C	60°C
	8000LM	70°C	5°C - 35°C	-20°C - 35°C	60°C
	10000LM	70°C	5°C - 35°C	-20°C - 35°C	60°C
	12000LM	60°C	5°C - 35°C	-20°C - 35°C	60°C
	14000LM	60°C	5°C - 35°C	-20°C - 35°C	60°C
	15000LM	60°C	5°C - 35°C	-20°C - 35°C	60°C
	18000LM	60°C	-	-	50°C
	24000LM	40°C	-	-	40°C
	28000LM	40°C	-	-	40°C

NUMBER OF BOARDS AND DRIVERS

Lumen package	fixture length	number of boards	number of drivers
2000LM	L24	1	1
3000LM		1	1
4000LM		1	1
5000LM		1	1
6000LM		1	1
7000LM		1	1
8000LM		1	1
9000LM		1	1
4000LM	L48	2	1
6000LM		2	1
8000LM		2	1
10000LM		2	1
12000LM		2	1
14000LM		2	1
15000LM		2	2
18000LM		2	2
24000LM		2	2
28000LM		2	2

*Minimum Ambient is -40°C unless noted

LUMEN MAINTENANCE*

		Operating Hours					
		0	15,000	30,000	45,000	60,000	100,000
L24	2000LM	100.0%	96.7%	94.1%	91.5%	88.9%	82.6%
	3000LM	100.0%	96.7%	94.1%	91.5%	88.9%	82.6%
	4000LM	100.0%	96.7%	94.1%	91.5%	88.9%	82.6%
	5000LM	100.0%	96.7%	94.1%	91.5%	88.9%	82.6%
	6000LM	100.0%	96.7%	94.1%	91.5%	88.9%	82.6%
	7000LM	100.0%	96.7%	94.1%	91.5%	88.9%	82.6%
	8000LM	100.0%	96.4%	93.8%	91.2%	88.7%	82.3%
	9000LM	100.0%	96.4%	93.8%	91.2%	88.7%	82.3%
L48	4000LM	100.0%	96.7%	94.1%	91.5%	88.9%	82.6%
	6000LM	100.0%	96.7%	94.1%	91.5%	88.9%	82.6%
	8000LM	100.0%	96.7%	94.1%	91.5%	88.9%	82.6%
	10000LM	100.0%	96.7%	94.1%	91.5%	88.9%	82.6%
	12000LM	100.0%	96.7%	94.1%	91.5%	88.9%	82.6%
	14000LM	100.0%	96.7%	94.1%	91.5%	88.9%	82.6%
	15000LM	100.0%	96.7%	94.1%	91.5%	88.9%	82.6%
	18000LM	100.0%	96.4%	93.7%	91.2%	88.6%	82.3%
	24000LM	100.0%	96.4%	93.7%	91.2%	88.6%	82.3%
	28000LM	100.0%	95.4%	91.9%	88.5%	85.2%	77.1%

*Data projected for 25°C ambient

IMPACT RESISTANCE (IK RATINGS)

Lens Type	Rating
Poly (FPFL/FPCL)	IK 10
Clear Glass (FGCL)	IK 08
Frosted Glass (FGFL)	IK 05

FEX LED

Low-Profile Enclosed and Gasketed

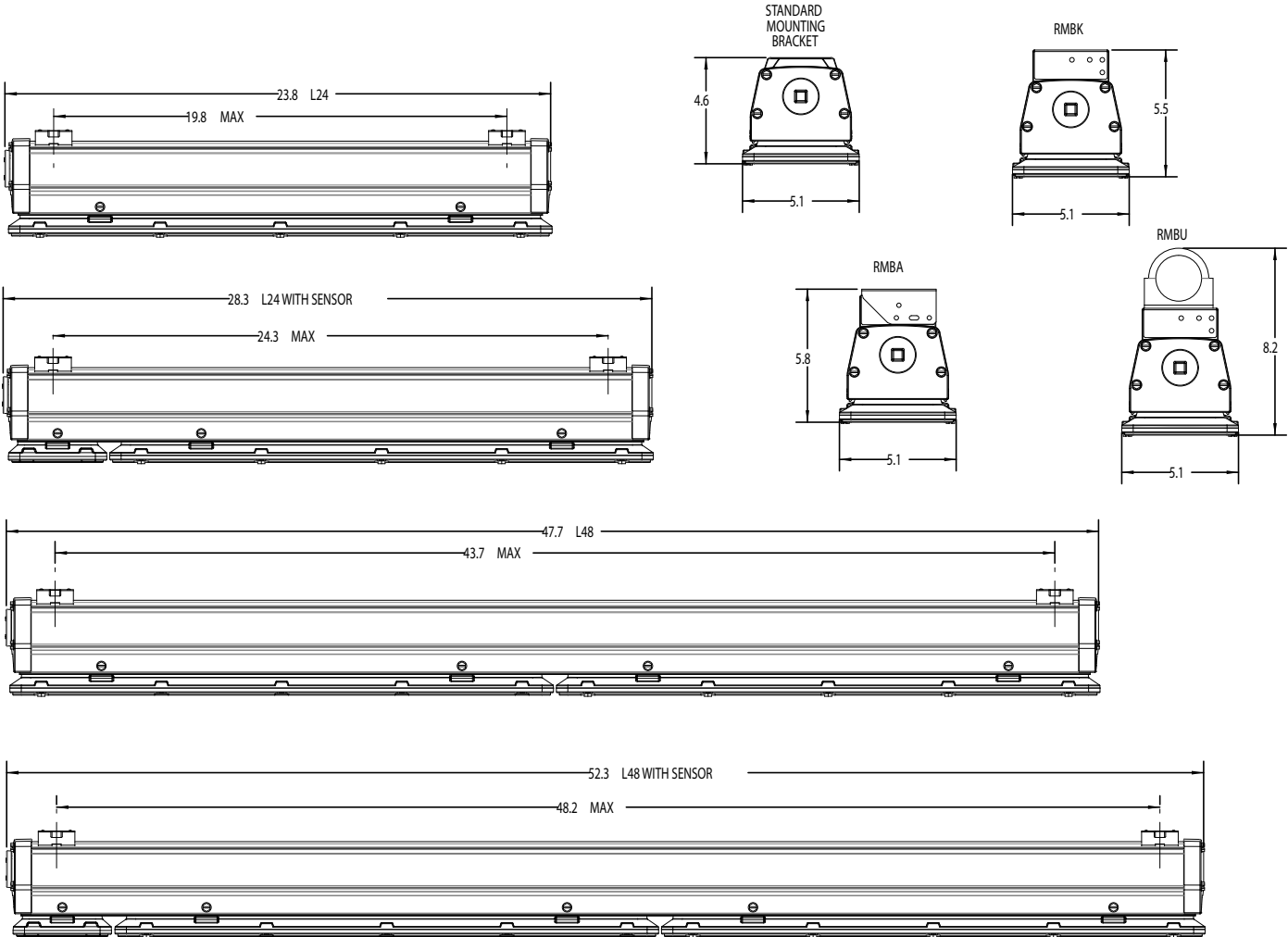
DIMENSIONS

Specifications subject to change without notice.
All dimensions are inches unless otherwise indicated.

CONFIGURATION WEIGHTS

	Standard	w/ Sensor	w/ Battery
L24	10.9 lbs	11.5 lbs	12.4 lbs
L48	19.4 lbs	20.0 lbs	20.9 lbs

Weight may vary with options and accessories



FEX LED

Low-Profile Enclosed and Gasketed

OPTIONS AND ACCESSORIES

Standard mount bracket



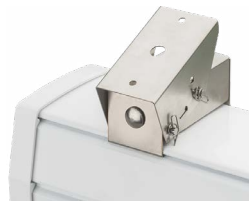
(ceiling, suspended)
Included with the fixture
unless one of the following 3
options are chosen.

RMBK Bracket



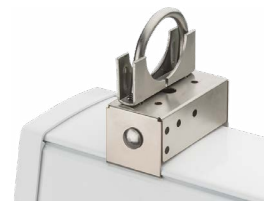
(ceiling, wall, suspended)
2' (L24) fixtures require 2
brackets and 4' (L48) fixtures
require 3 brackets for 3G
rating.

RMBA Bracket



(angled)
Bracket can be set to 22.5°,
45° or 90° angles.

RMBU Bracket



(pole)
1 1/2" Trade size Pipe mounting

CPSB16YWL Cordset



SBSR Sensor



RIO Control Module



RSBG Sensor

