



RENN A™

NEW EXPANDED OPTIONS AND CONFIGURATIONS

Peerless®





The new standard in rectilinear lighting

Everyone deserves great lighting. For more than 125 years, Peerless® has advanced the understanding of light and its impact on people within our built environments. The result? Elegant, technology-driven luminaires that enhance the human experience.

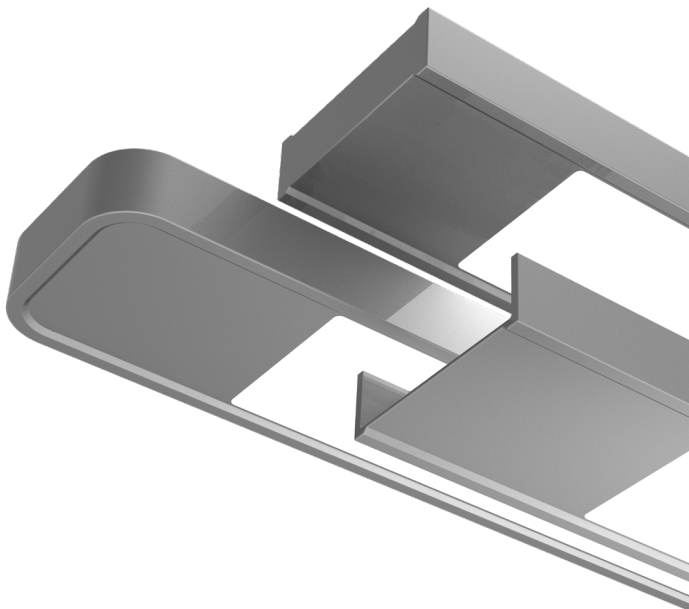
As today's spaces are constantly changing for the user's needs, luminaires need to deliver more than just light. Peerless Renna™ is a rectilinear luminaire that delivers more of what matters most to you: visual comfort, greater control, sleek design, easy installation and premium quality in a cost-effective solution.

Renna is great lighting.

Quality lighting

Great lighting delivers exceptional visual comfort and lighting distribution - and now, in a small form factor. At four inches wide by one inch high, Renna combines exceptional quality of light in a sleek, minimalist design, delivering the brilliant illumination and design freedom you've been waiting for.

And with its uniform spread of illuminance, Renna delivers glare-controlled downlighting and a concealed source of asymmetric wall wash.





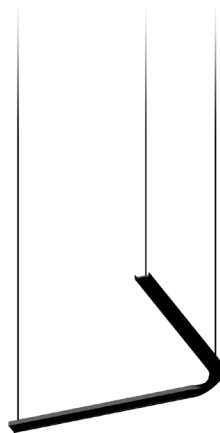
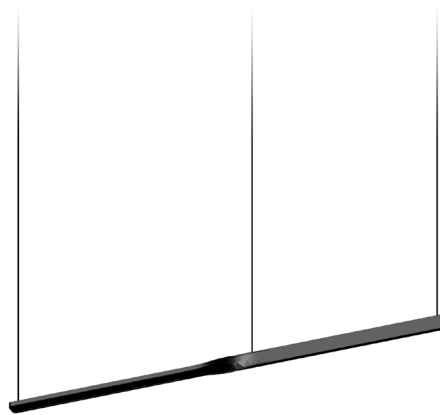
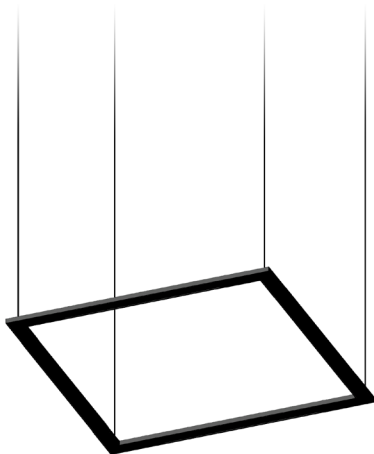
Design Freedom

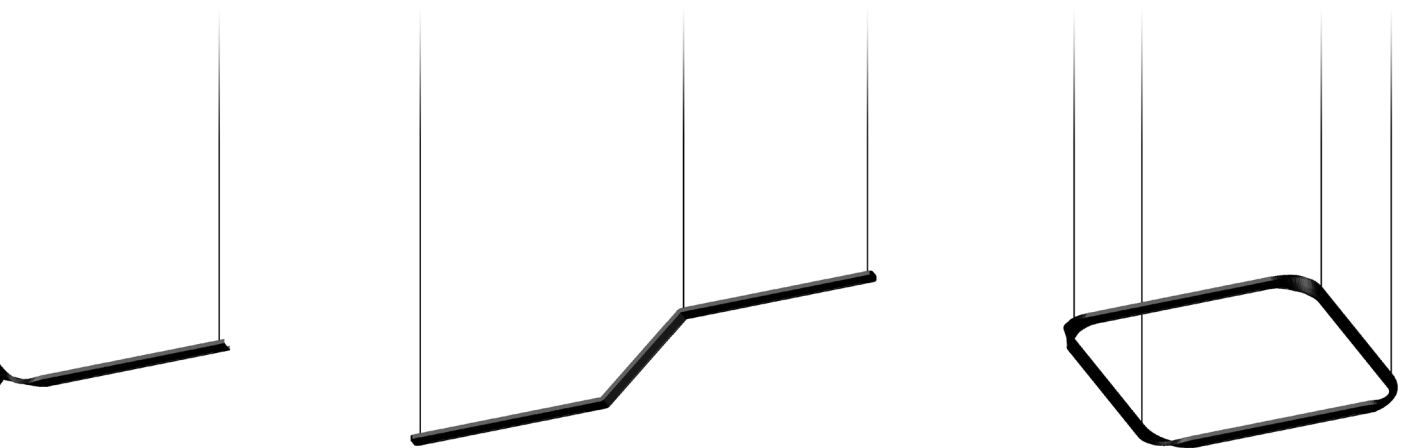
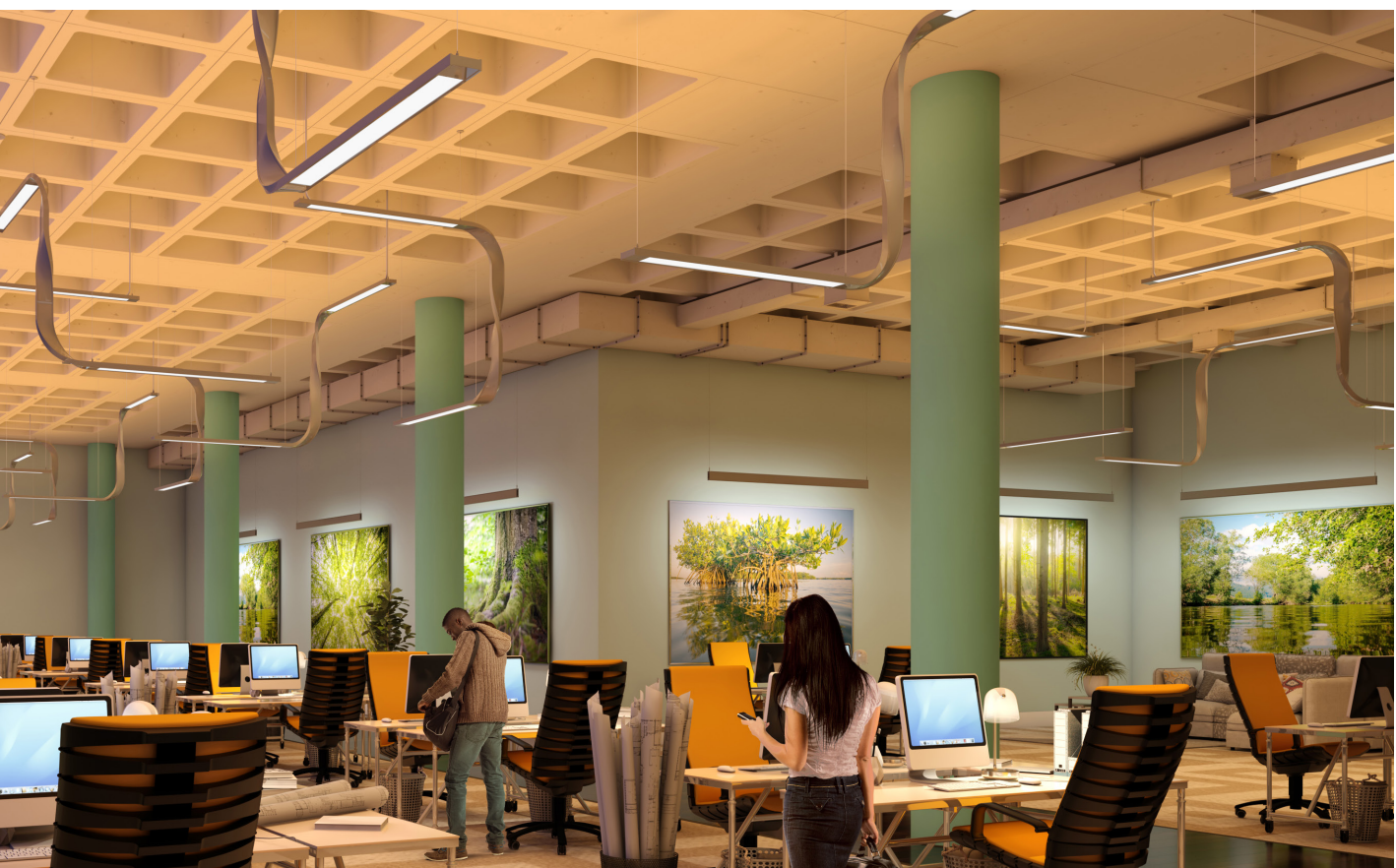
Renna can blend into your architectural expression or create a focal point to establish visual hierarchy with over seventeen transitions than can twist and turn throughout a space.

Select from multiple design features to complete the look you desire.

Renna is available in several lengths, colors and mounting options. Choose between three run lengths: 2 foot, 4 foot, and 8 foot sections, as well as continuous runs. Three standard finishes; textured black, textured white and painted aluminum with standard colors and paint colors also available. And three endcap options; square, sculpted or rounded.

Get creative with Renna - below are five of the most popular layouts to help inspire your next design.





Application Versatility

- **Suspended Linear**
 - Efficient, comfortable general illumination
- **Ceiling Surface - Mounted**
 - Low-profile, direct illumination, engineered to align straight on any ceiling
- **Wall-Mounted**
 - Minimal profile and multitude of transitions enable continuous wall mounting
- **Vertical Wall Wash**
 - Unique vertical wall-wash optics uniformly light walls from top to bottom

Renna transitions allow for patterns in 3-dimensional space. Create unique combinations of surface, suspended and wall-mounted configurations in the same application!





Mini
Curve 30



Mini
Curve 45



Mini
Curve 90



Straight Twist



Mini
Square



Mini
Corner



L Corner



T Corner



L Corner



Curve



Double
Curve



Curve



Banked
Curve



Double
Banked
Curve



Banked
Curve



Twisted
Left
Curve



Twisted
Double
Curve



Twisted
Right
Curve

Reshape Your Space with Flexibility: Same Great Design, Flexible Control Options

The control you need

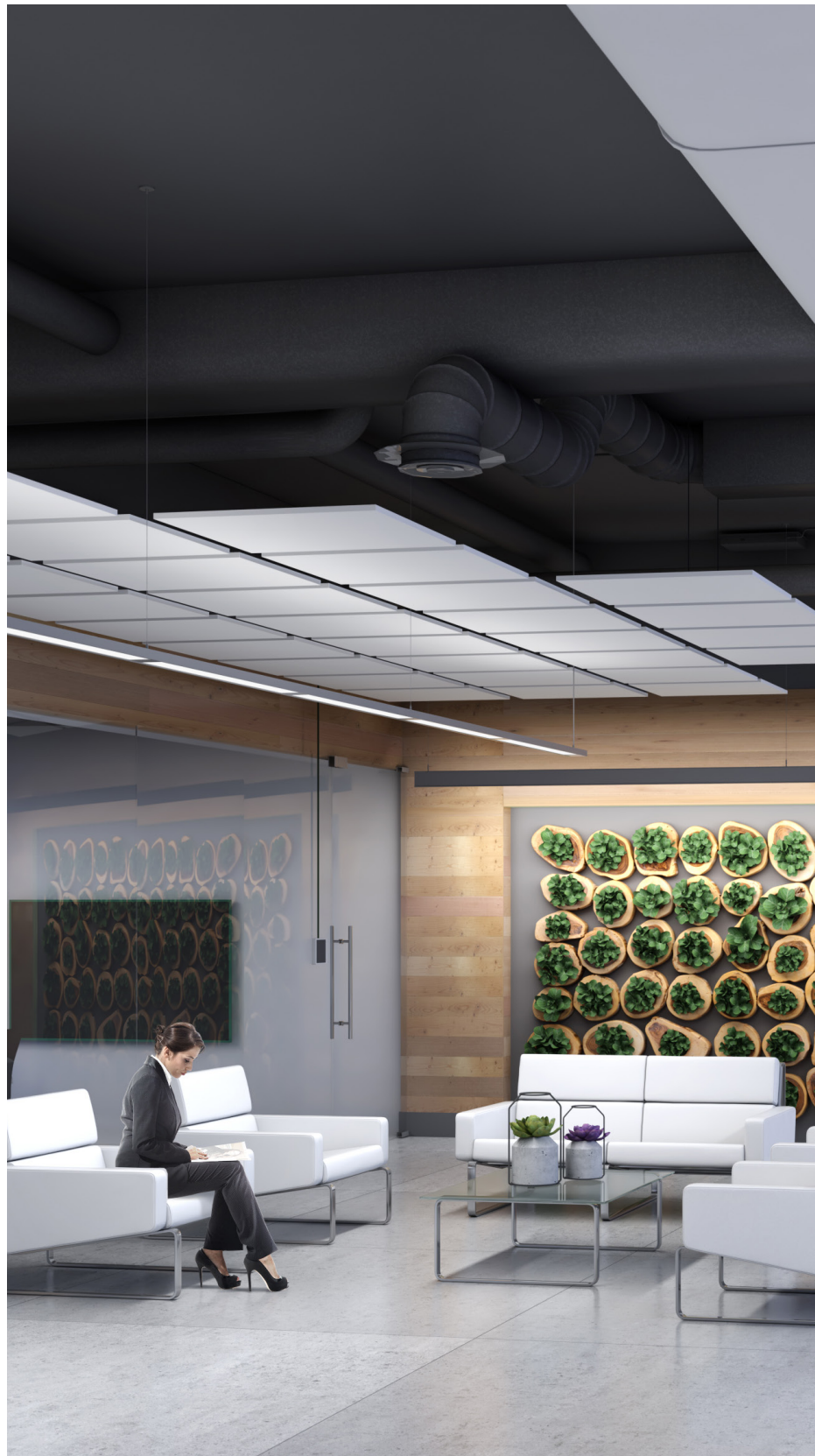
Great lighting gives you more control, allowing spaces to change as your needs change. Enhance your control with the unparalleled customization options provided by either the streamlined simplicity of an integral on-board driver or the sophisticated central control system of Modulus.

Understanding Modulus™ technology

Modulus is a low voltage distributed power and control system for providing digital control and networked technologies for LED luminaires.

This innovation from Acuity Brands unifies an eldoLED® driver, an IOTA® power pack for emergency back-up power and nLight® networked lighting controls. Modulus also supports controls systems with open protocols.

It can be used to create dependable lighting controls for smarter, connected buildings and facilities.





Sophistication Redefined

Easier Installation

Modulus technology simplifies installation with a single class 2 power drop (including communication) for up to 32 feet of luminaires, reducing design complexity and design labor.

Greater Flexibility

Ability to easily add layers of control, configure and commission with a remote device, and change in the future without adding wires.

Simplified Emergency Lighting Solutions

Modulus complies with UL 924 for emergency lighting of a “directly controlled” luminaire system. This greatly simplifies design and installation of emergency linear sections *without additional wiring* and enables an entire grouping of linear sections to deliver emergency lighting if desired.

Modulus Enables

It provides power and control for luminaires as small as one inch in depth while increasing energy savings through a more advanced and efficient energy conversion. Modulus can be integrated or unified with additional innovative technologies from Acuity Brands such as Atrius®IoT systems, to provide real time location services used for way-finding, asset tracking and other building and business applications.

Learn more at:

acuitybrands.com/products/family/modulus

Elevated Simplicity



Renna with Integral Driver...

Maintains the ability to create dynamic 2 dimensional and 3 dimensional designs and patterns that bring flow, and fluidity to your space, or to create shapes, like rectangles and squares paired with long or short linear runs that can outline, shape, or section areas to help create a comprehensive space for people to come do their best work.

Continues to deliver the same super quality of light as traditional Renna. Working with our business partners in Acuity Brands, Inc. we developed a new light engine that maintains 90CRI standard with high R9 values ensuring superior color rendering, while pairing that with a new programmable 2 channel AC driver designed to fit into spaces that are less than 1" squared. This new light engine supports single or dual channel diming or on/off controllability down to 1%.

Is designed to meet the demands of traditional lighting markets where complex controls are not required. It uses a traditionally powered integral AC dimming driver that supports through-row wiring, emergency solutions, and controls. It offers the same unparalleled creativity but with a traditional power source.



The product images shown are for illustration purposes only and may not be an exact representation of the product.

Renna is a recipient of the
Lightfair® International 2019 Design Excellence Award

Peerless®

Explore great lighting with
Peerless Renna at PeerlessLighting.com/Renna