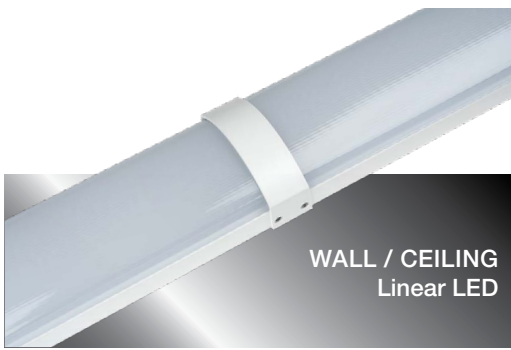


VERTEX CLF7L Linear

Vandal Resistant

CLF7L Series LED



Fixture Type	Date
Job Name	Approved By
Catalog Number	

SPECIFICATIONS

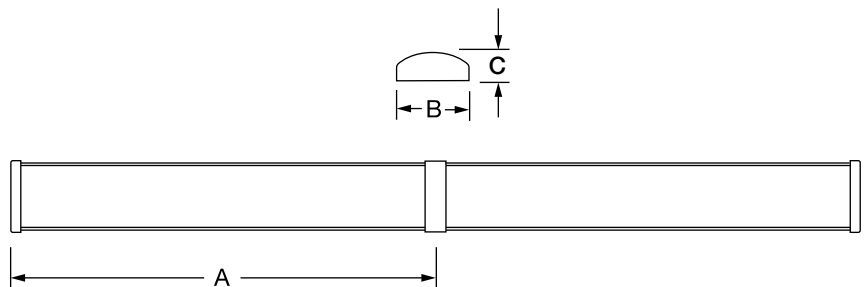
ADA
ADA Compliant



Description	The Vertex CLF7L linear series combines sophisticated optical performance with an economical durable, steel construction that is typically used in applications where durability and price are both equally considered. Successful applications have included public schools, airports, industrial facilities and public rest areas. The Vertex CLF7L linear series is also available with energy saving occupancy sensors and can be continuous row mounted as needed.
Housing	Die formed 18 gauge cold rolled zinc coated steel. Aluminum housing is also available. Finished with electrostatically applied polyester powder coat.
Lens	Extruded UV stabilized opal polycarbonate with integral prisms. Maximum wall thickness 0.160". Secured to housing with injection molded end caps and 2 captive stainless steel TORX® head screws.
End Caps	Injection molded UV stabilized polycarbonate with minimum wall thickness 0.140". Secured to housing with 2 captive stainless steel TORX® head screws per side. Provisions for surface conduit entry.
Drivers	Dimming to 1%, 10% or Programmable Lumen Output driver options. Non-Dimming Driver is also available.
LED	Samsung LM561B+ series @ 2700K, 3000K, 3500K, 4000K, or 5000K and 82 CRI wired in parallel-series. L ₇₀ projected life of over 130,000 hours at 50°C.
Government Procurement	BAA – Buy America(n) Act: Product qualifies as a domestic end product under the Buy American Act as implemented in the FAR and DFARS. Product also qualifies as manufactured in the United States under DOT Buy America regulations. BABA – Build America Buy America: Product qualifies as produced in the United States under the definitions of the Build America, Buy America Act. Please refer to www.acuitybrands.com/buy-american for additional information.
UL Listing	U.L., C.UL. Damp Location Listing standard.
Warranty	Lifetime warranty, Luminaire LED incorporated will repair or replace any fixture damaged due to vandalism for the lifetime of the installation. 10-year warranty on LED boards against operational defects. Tested in accordance with LM-80.
Note	Actual performance may differ as a result of end-user environment and application. All values are design or typical values, measured under laboratory conditions at 25 °C. Specifications subject to change without notice.

DIMENSIONAL DATA

	A	B	C
CLF7L 2FT	25.38	7.35	3.16
CLF7L 3FT	35.73	7.35	3.16
CLF7L 4FT	47.58	7.35	3.16



ORDERING INFORMATION

Example: CLF7L LSL #FT MSL2 NODIM 2DRV 40W 27K 120 CLP WHT

Series*	Linear Plan*	Total Run Length*	Max Section Length* ¹	Housing	Drivers
CLF7L Industrial Vandal Resistant 7" Wide Linear Luminaire, Joined for Linear Run.	LSL Linear Same Length	_FT Total Run Length in Feet. Max. 100FT <i>Total Length of the Linear Run. Cannot Combine Different Fixture Lengths per run. See chart on page 3</i>	MSL2 2FT MSL3 3FT MSL4 4FT <i>Choose only ONE length per linear run.</i>	(Blank) AL Aluminum Housing	MIN10 ² Dimming to 10% MIN1 Dimming to 1% NODIM Non-Dimming Driver

Dual Drivers	Wattage* ¹	CCT	Voltage*	Lens*	Finish*
2DRV Two LED Drivers for independent LED Board Operations	15W 40W 20W 50W 25W <i>See Chart on Page 3 for Available Wattage per Fixture Length</i>	27K 2700K 30K 3000K 35K 3500K 40K 4000K 50K 5000K	120 120 Volt 277 277 Volt MVOLT 120-277 Volt 347 347 Volt	CLP Clear Prismatic OP Opal	BLK Black WHT White BRZ Bronze GRY Gray CUST Custom Color, Consult Factory RALTBD Ral Paint finishes RALTBD for pricing only. Replace with applicable RAL call out when ready to order. See the RAL BROCHURE for available options

*Required

OPTIONS

Emergency ²	
#EMB310 Self contained, 90 minute emergency battery pack. 0°C (32°F) to 55°C (131°F) 1200 lumens	#EMB20R ^{4,5} Remote mounted micro inverter that will operate a 25W maximum load for 90 min. 0°C (32°F) to 45°C (113°F).
#EMB310T20 Self contained, 90 minute emergency battery pack. 0°C (32°F) to 55°C (131°F). Meets CA Title 20 standards. 1200 lumens	#EMB125R ⁴ Remote inverter that will operate a maximum 125W load for 90 min. 20°C (68°F) to 30°C (86°F)
#EMB722 ³ Self contained, 90 minute emergency battery pack for 25W operation only. 0°C (32°F) to 60°C (140°F). 2600 lumens	#EMB250R ⁴ Remote inverter that will operate a 250W maximum load for 90 min. 20°C (68°F) to 30°C (86°F)
	#EMB375R ⁴ Remote inverter that will operate a 375W maximum load for 90 min. 20°C (68°F) to 30°C (86°F)

Location of battery pack defaults to the right side of the final fixture in the run, for other locations please consult factory.

Back Box	Fusing	Photocell	Sensors ⁸	Hardware
COR Corner Mounted Back Box	GLR ⁶ Fuse and Fuse Holder	PC ^{6,7} Photoelectric Switch	OCC Microwave occupancy sensor mounted behind the lens. On/Off operation only. OCC50 ⁹ Microwave occupancy sensor. 50% of LED's constantly on and 50% sensed on/off. OCCBT Bluetooth connected microwave occupancy sensor mounted behind the lens. All LED board sensed to dim to 50%, 40%, 30%, 20%, or 10%, field selectable low levels. OCCFA Microwave occupancy sensor mounted behind the lens. All LED board sensed to dim to 50%, 30%, 20%, or 10%, field selectable low levels. Factory standard preset of 50% dimming level and 20 minute time out	PHSC Phillips Head Screws Insted of TORX [®] head

Ordering Notes

- See Linear Run Chart
- Not available with 347
- Not available in MSL2 or in MSL3 with EMB722 and OCCBT
- Not available with MVOLT
- Not available with Wattage over 25W
- Not available with MVOLT or 347
- Not available with OCCBT
- Not available with EMB20R, EMB125R, EMB250R
- Not available with 2DRV

Accessories: Order as separate catalog number.

TXSD TORX[®] Screwdriver Bit

Initial shipment includes one (1) TXSD per fixture

LINEAR RUN CHART

Size	Wattage
MSL2	15W 25W
MSL3	20W 40W
MSL4	25W 50W

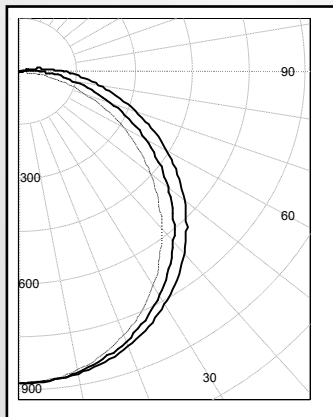
PHOTOMETRIC DATA

Model	Watts	Input Watts	Delivered Lumens		Delivered Lumens		Delivered Lumens		Delivered Lumens		Delivered Lumens	
			Clear	Opal	Clear	Opal	Clear	Opal	Clear	Opal	Clear	Opal
			2700K		3000K		3500K		4000K		5000K	
CLF7L 2FT	15W	13.5W	1445	1340	1461	1355	1491	1383	1538	1426	1583	1468
CLF7L 2FT	25W	26.6W	2879	2668	2912	2698	2971	2754	3063	2839	3155	2924
CLF7L 3FT	20W	20.0W	1983	1837	2005	1858	2046	1896	2110	1955	2173	2013
CLF7L 3FT	40W	42.9W	3765	3489	3842	3561	4408	4086	4545	4213	4681	4339
CLF7L 4FT	25W	26.9W	2879	2668	2912	2698	2971	2754	3063	2839	3155	2924
CLF7L 4FT	50W	54.0W	5519	5116	5581	5173	5695	5279	5872	5443	6048	5606
CLFxL xFT	PRD		Programmable Driver. Must Specify Lumens in Ordering Information									

PHOTOMETRIC DATA

MODEL CLF7L 2FT 25W 40K OP

Delivered Lumens: 2,629 Lumens



IES FILE: CLF7L 2FT 25W 40K OP

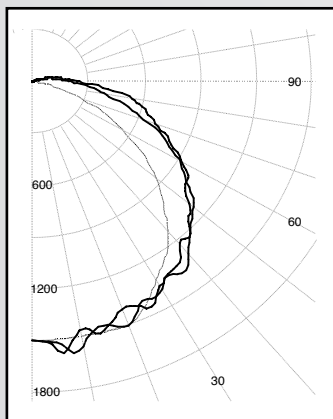
Total Power: 29.8W

Testing was performed in accordance with IES LM-79-08

Zone	Lumens	% Lamps
0 - 30	677	25.7
0 - 40	1102	41.9
0 - 60	1934	73.6
60 - 90	621	23.6
0 - 90	2555	97.2
90 -180	75	2.8
0 - 180	2629	100.0

MODEL CLF7L 4FT 50W 40K CLP

Delivered Lumens: 5,437 Lumens



IES FILE: CLF7L 4FT 50W 40K CLP

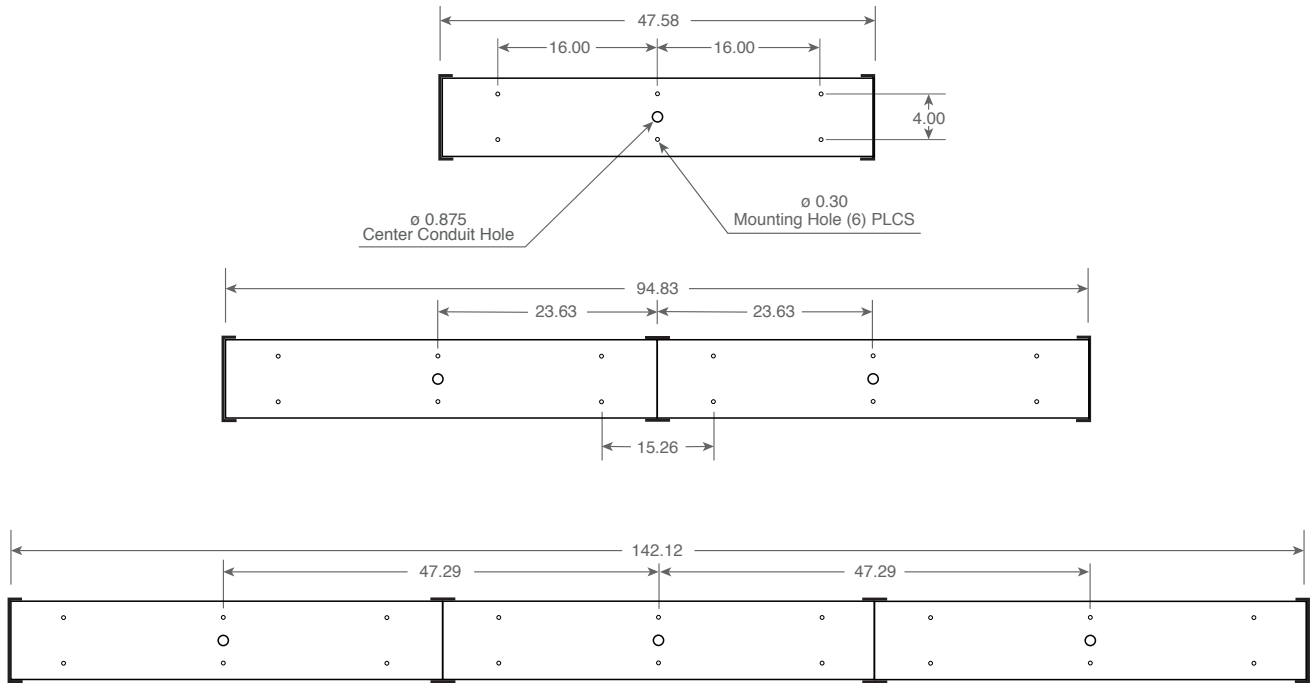
Total Power: 55.3W

Testing was performed in accordance with IES LM-79-08

Zone	Lumens	% Lamps
0 - 30	1229	22.6
0 - 40	2056	37.8
0 - 60	3785	69.6
60 - 90	5217	26.3
0 - 90	3161	96.0
90 -180	220	4.0
0 - 180	5437	100.0

MOUNTING PLATE DETAILS

CLF74



VERTEX CLF7L Linear

Vandal Resistant

CLF7L Series LED

FIXTURE IMAGE

