



ARC1 LED

Architectural Wall Luminaire



Catalog Number

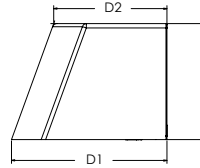
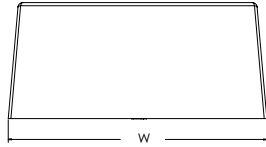
Notes

Type

Hit the Tab key or mouse over the page to see all interactive elements.

Specifications

Depth (D1): 6.5"
Depth (D2): 4.75"
Height: 5"
Width: 11"
Weight: 7 lbs
 (without options)



Introduction

The Lithonia Lighting ARC LED wall-mounted luminaires provide both architectural styling and visually comfortable illumination while providing the high energy savings and low initial costs for quick financial payback.

ARC1 delivers up to 3,000 lumens with a soft, non-pixelated light source, creating a visually comfortable environment. The compact size of ARC1, with its integrated emergency battery backup option, is ideal for over-the-door applications.

ARC LED Family Overview

Luminaire	Standard EM, 0°C	Cold EM, -20°C	Approximate Lumens (4000K)				
			P1	P2	P3	P4	P5
ARC1 LED	4W	--	1,500	2,000	3,000	--	--
ARC2 LED	4W	8W	1,500	2,000	3,000	4,000	6,500

Ordering Information

EXAMPLE: ARC1 LED P2 40K MVOLT PE DDBXD

Series	Package	Color Temperature	Voltage	Options	Finish
ARC1 LED	P1 1,500 Lumens	30K 3000K	MVOLT 347 ¹	E4WH Emergency battery backup, CEC compliant (4W, 0°C min) ¹	DDBXD Dark bronze
	P2 2,000 Lumens	40K 4000K		PE Button type photocell for dusk-to-dawn operation	DBLXD Black
	P3 3,000 Lumens	50K 5000K		DMG 0-10V dimming wires pulled outside fixture (for use with an external control, ordered separately) ²	DNAXD Natural aluminum
				SPD6KV 6kV surge protection	DWHXD White
				FAO Field adjustable light output device. Allows for easy adjustment to the desired light levels, from 20% to 100% ²	DSSXD Sandstone
					DDBTXD Textured dark bronze
					DBLBXD Textured black
					DNATXD Textured natural aluminum
					DWHGXD Textured white
					DSSTXD Textured sandstone

Accessories

Ordered and shipped separately.

WSBBW DDBXD U Surface - mounted back box (specify finish)

NOTES

- 347V not available with E4WH.
- FAO not available with DMG.



COMMERCIAL OUTDOOR

One Lithonia Way • Conyers, Georgia 30012 • Phone: 1-800-705-SERV (7378) • www.lithonia.com
 © 2020 Acuity Brands Lighting, Inc. All rights reserved.

ARC1 LED
 Rev. 11/16/20

Performance Data

Lumen Output

Lumen values are from photometric tests performed in accordance with IESNA LM-79-08. Data is considered to be representative of the configurations shown, within the tolerances allowed by Lighting Facts. Contact factory for performance data on any configurations not shown here.

Performance Package	System Watts	30K (3000K, 80 CRI)					40K (4000K, 80 CRI)					50K (5000K, 80 CRI)				
		Lumens	LPW	B	U	G	Lumens	LPW	B	U	G	Lumens	LPW	B	U	G
P1	11W	1,376	127	0	0	0	1,454	134	0	0	0	1,464	135	0	0	0
P2	17W	2,035	121	1	0	1	2,151	128	1	0	1	2,165	129	1	0	1
P3	25W	2,859	117	1	0	1	3,021	123	1	0	1	3,041	124	1	0	1

Electrical Load

Performance Package	System Watts	Current (A)				
		120V	208V	240V	277V	347V
P1	11W	0.111	0.061	0.053	0.047	0.045
P2	17W	0.139	0.081	0.071	0.063	0.060
P3	25W	0.208	0.122	0.108	0.097	0.081

Lumen Output in Emergency Mode (4000K, 80 CRI)

Option	Lumens
E4WH	620

Lumen Ambient Temperature (LAT) Multipliers

Use these factors to determine relative lumen output for average ambient temperatures from 0-40°C (32-104°F).

Ambient	Lumen Multiplier
0°C / 32°F	1.04
10°C / 50°F	1.02
20°C / 68°F	1.01
25°C / 77°F	1.00
30°C / 86°F	0.99
40°C / 104°F	0.97

Projected LED Lumen Maintenance

Data references the extrapolated performance projections for the platforms noted in a 25°C ambient, based on 10,000 hours of LED testing (tested per IESNA LM-80-08 and projected per IESNA TM-21-11). To calculate LLF, use the lumen maintenance factor that corresponds to the desired number of operating hours below. For other lumen maintenance values, contact factory.

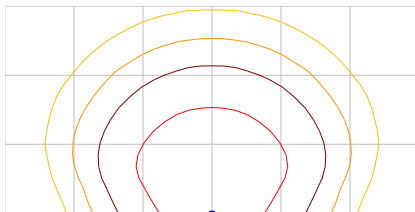
Operating Hours	0	25,000	50,000	100,000
Lumen Maintenance Factor	0.97	>0.96	>0.95	>0.91

Photometric Diagrams

To see complete photometric reports or download .ies files for this product, visit the Lithonia Lighting ARC LED homepage. Tested in accordance with IESNA LM-79 and LM-80 standards.

LEGEND

- 0.25 fc
- 0.5 fc
- 1.0 fc
- 3.0 fc



MH = 10ft
Grid = 10ft x 10ft

ARC1 LED P3 40K

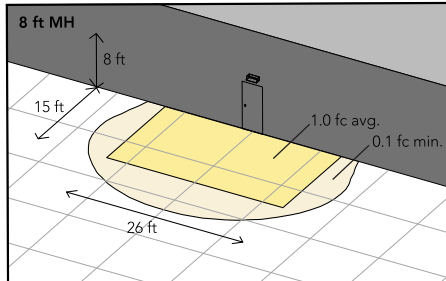
Emergency Egress Options

Emergency Battery Backup

The emergency battery backup is integral to the luminaire — no external housing required! This design provides reliable emergency operation while maintaining the aesthetics of the product. All emergency battery backup configurations include an independent secondary driver with an integral relay to immediately detect loss of normal power and automatically energize the luminaire. The emergency battery will power the luminaire for a minimum duration of 90 minutes (maximum duration of three hours) from the time normal power is lost and maintain a minimum of 60% of the light output at the end of 90 minutes.

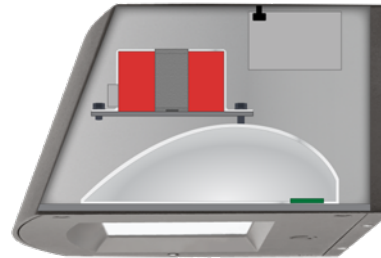
Applicable codes: NFPA 70/NEC – section 700.16, NFPA 101 Life Safety Code Section 7.9

The example below shows illuminance of 1 fc average and 0.1 fc minimum in emergency mode.



Grid = 10ft x 10ft

ARC1 LED 40K MVOLT E4WH



Self-contained solution for clean aesthetic

Mounting, Options & Accessories

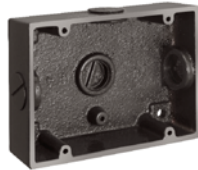


E4WH – 4W Emergency Battery Backup

D = 6.5"

H = 5"

W = 11"



BBW – Standard Back Box

D = 1.5"

H = 4"

W = 5.5"

For surface conduit applications.
3/4" conduit entry holes.

FEATURES & SPECIFICATIONS

INTENDED USE

The clean architectural shape of the ARC LED was designed for applications such as hospitals, schools, malls, restaurants, and commercial buildings. The long-life LEDs and driver make this luminaire nearly maintenance-free.

CONSTRUCTION

The die-cast aluminum housing and door act as heat sinks to optimize thermal transfer from the light engine and driver to promote long-life. The die-cast door frame is fully gasketed with a one-piece solid silicone gasket to keep out moisture and dust, providing an IP65 rating for the luminaire.

FINISH

Exterior painted parts are protected by a zinc-infused Super Durable TGIC thermoset powder coat finish that provides superior resistance to corrosion and weathering. A tightly controlled multi-stage process ensures a 3 mils thickness for a finish that can withstand extreme climate changes without cracking or peeling. Standard Super Durable colors include dark bronze, black, natural aluminum, sandstone and white. Available in textured and non-textured finishes.

OPTICS

Recessed lens to cut off high angle light and reduce glare. Combination of diffused lens and reflector design has low surface brightness creating a visually comfortable environment with great distribution. LEDs are fully hidden from view to eliminate pixelization and harsh glare. The ARC LED has zero uplight and qualifies as a Nighttime Friendly™ product, meaning it is consistent with the LEED® and Green Globes™ criteria for eliminating wasteful uplight.

ELECTRICAL

Light engine consists of high-efficiency LEDs mounted to metal-core circuit boards to maximize heat dissipation and promote long-life (up to L91/100,000 hours at 25°C). The electronic driver has a power factor of >90%, THD <20%. Luminaire is 0-10V dimmable.

INSTALLATION

The universal wall plate, supplied with the luminaire, fits multiple size junction boxes and supports the luminaire during wiring for easy installation. Built-in wet location wiring compartment on the luminaire to accommodate wiring connections for where there is no junction box. Design can withstand up to a 1.5 G vibration load rating per ANSI C136.31.

LISTINGS

CSA certified to U.S. and Canadian standards. Luminaire is IP65 rated. DesignLights Consortium® (DLC) Premium qualified product and DLC qualified product. Not all versions of this product may be DLC Premium qualified or DLC qualified. Please check the DLC Qualified Products List at www.designlights.org/QPL to confirm which versions are qualified. International DarkSky Association (IDA) Fixture Seal of Approval (FSA) is available for all products on this page utilizing 3000K color temperature only.

WARRANTY

5-year limited warranty. Complete warranty terms located at:
www.acuitybrands.com/support/customer-support/terms-and-conditions

Note: Actual performance may differ as a result of end-user environment and application. All values are design or typical values, measured under laboratory conditions at 25 °C. Specifications subject to change without notice.



COMMERCIAL OUTDOOR

One Lithonia Way • Conyers, Georgia 30012 • Phone: 1-800-705-SERV (7378) • www.lithonia.com
© 2020 Acuity Brands Lighting, Inc. All rights reserved.

ARC1 LED
Rev. 11/16/20