



# ARC LED Architectural Wall Packs

Customer Training – August 2020

---



Note: Product Specifications subject to change without notice.



**AcuityBrands.**

©2018 Acuity Brands Lighting, Inc.

## Elevator Pitch – Upgrade your Expectations

Upgrading old-technology wall-mounted lighting with new energy efficient LED products provides one of the best returns on investment available today. Energy savings of up to 80% are typical, and with today's lower luminaire prices and utility rebates the payback is measured in months, not years.

In the race for more cost-effective products, lighting manufacturers have compromised both aesthetics and visual comfort. These products diminish the architecture of the building and create a glary visual environment for the occupants. And unfortunately, they last for years to come.

The all-new Lithonia Lighting® ARC LED wall-mounted luminaires addresses this problem with both architectural styling and visually comfortable illumination... and does so with high energy savings and low initial costs that meet your customers' financial payback requirements. ARC LED wall-mounted luminaires are a lighting upgrade that you can be proud of; improving the architecture and visual environment of the building while saving 80% in energy costs. Its time to upgrade your expectations when it comes to upgrading wall mounted lighting. You can have it all with Lithonia ARC LED wall-mounted luminaires.

# The Lithonia Lighting® ARC LED: Product Video





# You Deserve Better

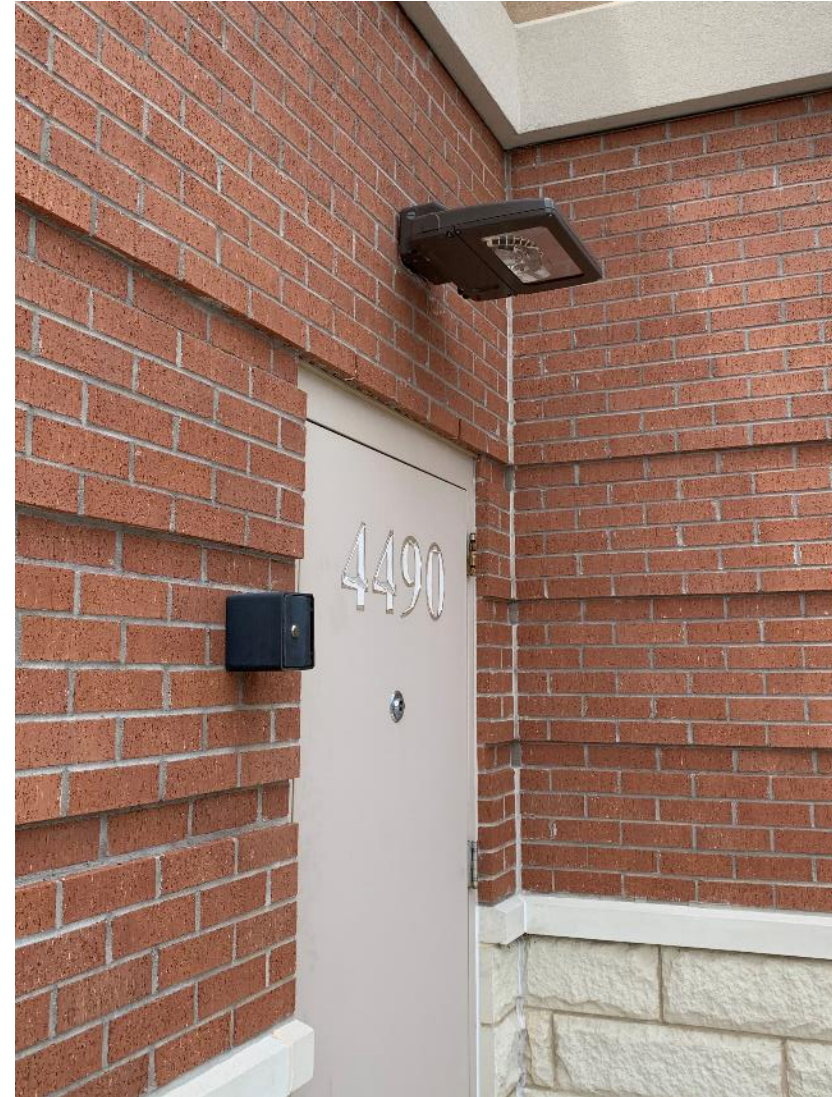


# You Deserve Better: Form





# You Deserve Better: Scale

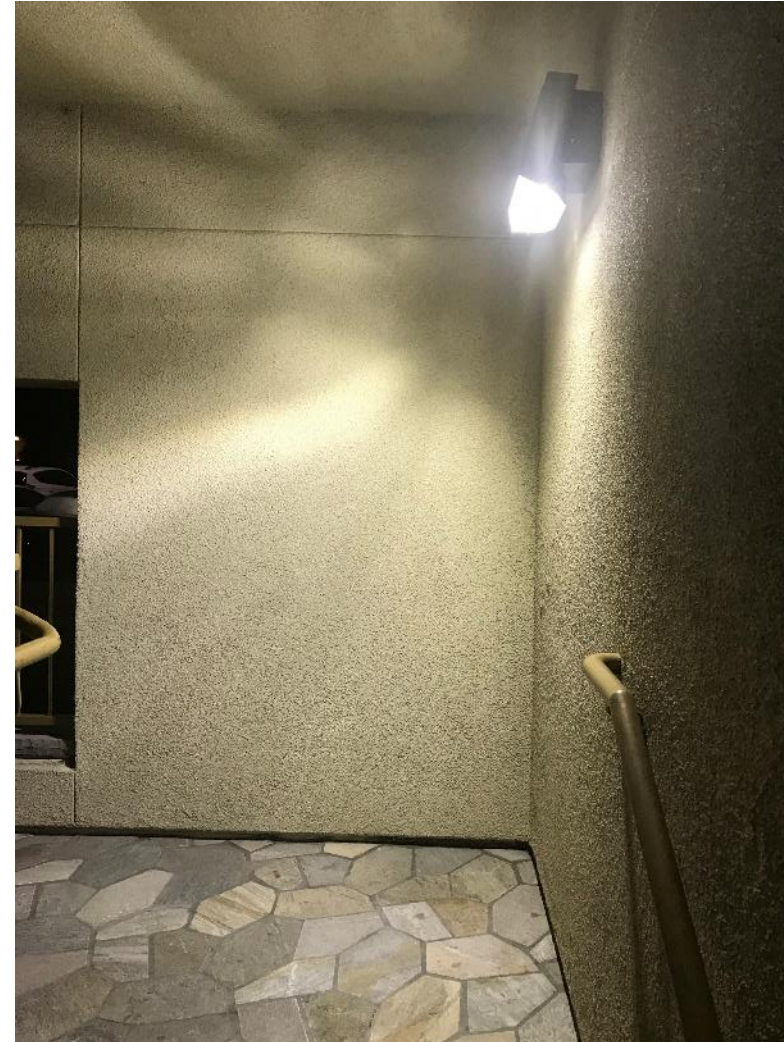




# You Deserve Better: LED in an HID Shell



# You Deserve Better: Illumination





# Upgrade Your Expectations with the New ARC LED



**Get the architectural styling and visually comfortable illumination you want with the financial payback you need.**

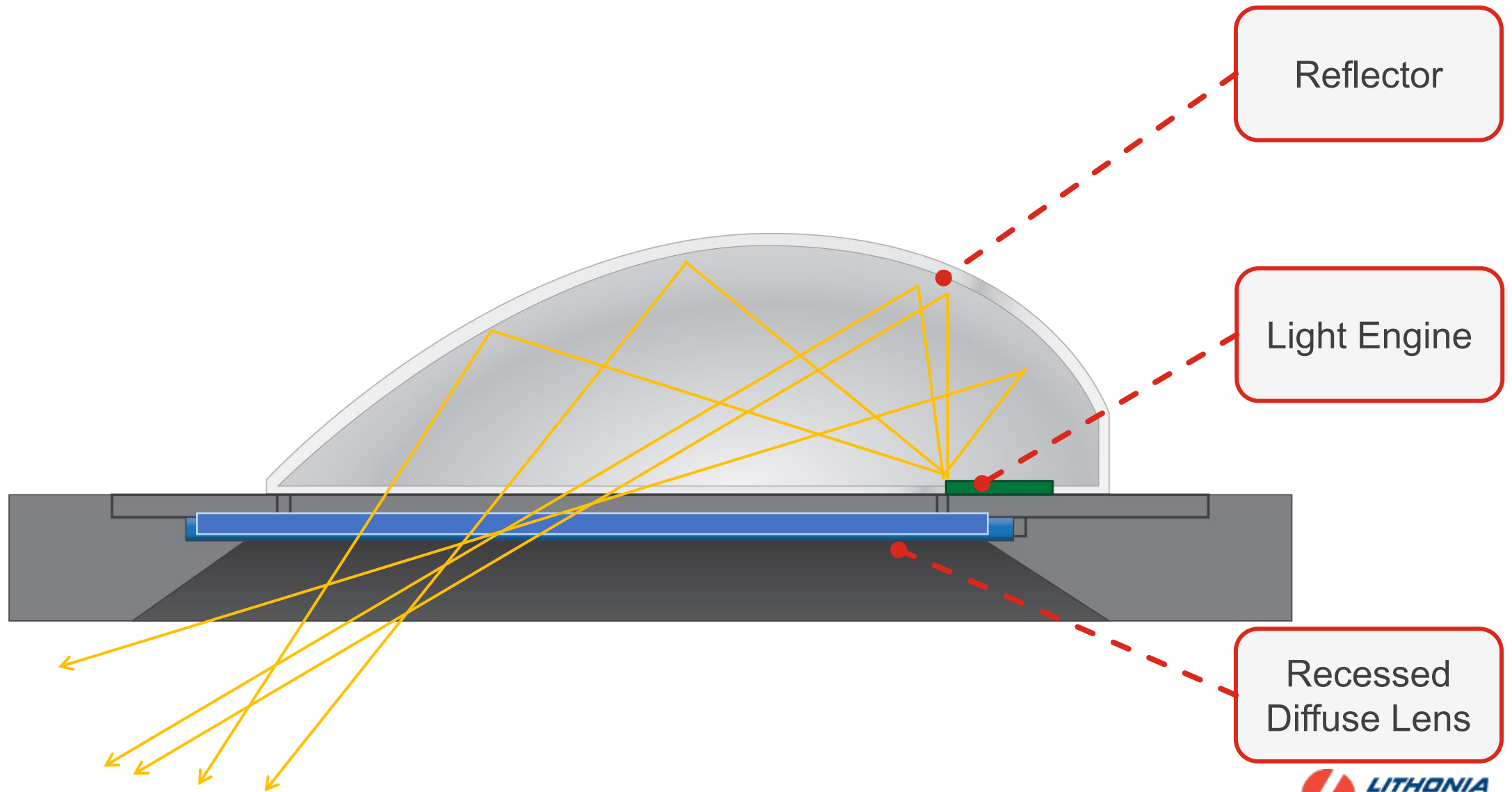


Architectural form looks great  
on any building.

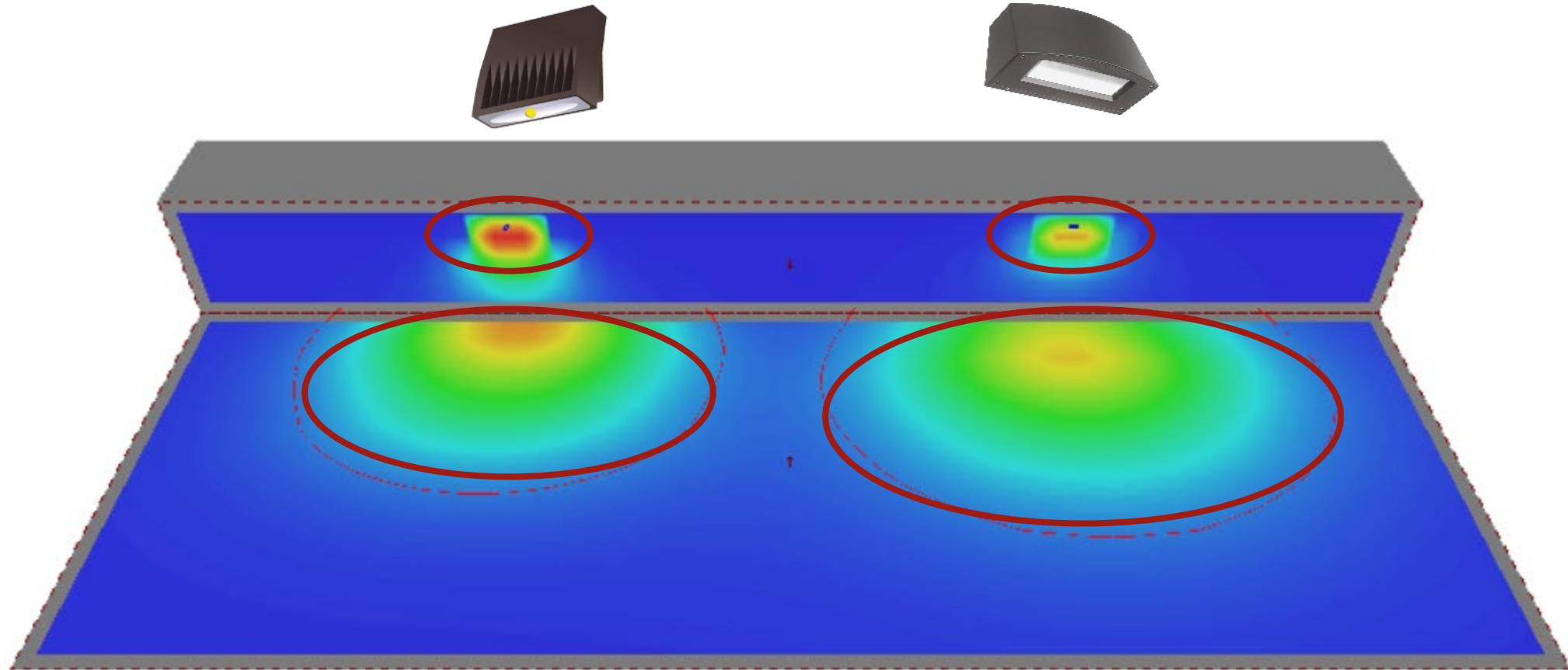




# High Technology Visual Comfort Optics



## Photometric Performance:



**Wider and more uniform throw, with less light on the wall.**



# ARC LED Wall-Mounted Luminaires



	ARC1	ARC2
<b>Lumen Output</b>	1,500 – 3,000	1,500 – 6,500
<b>Mounting Height</b>	8 ft – 12 ft	8 ft – 15 ft
<b>Input Power</b>	12W – 25W	12W – 52W
<b>Efficacy</b>	127 LPW	124 LPW
<b>Size (W x D x H)</b>	11" x 6.5" x 5"	14" x 9" x 5"

- 3000K, 4000K and 5000K (80 CRI)
- Integral emergency battery options



# ARC LED Wall-Mounted Luminaires

	ARC1			ARC2				
Power Package	P1	P2	P3	P1	P2	P3	P4	P5
Lumens (4000K)	1,454	2,151	3,021	1,587	2,377	3,387	4,124	6,615
Watts	11W	17W	25W	11W	16W	24W	30W	51W
LPW	134	128	123	150	147	143	136	129
Lumen Maintenance	L95 @ 50,000 Hours							



# Available Options

Lumen Package	Color Temperature	Voltage	Options	Color Finish (Gloss or Textured)
<b>ARC1 LED</b> <b>P1</b> - 1,500 lumens <b>P2</b> - 2,000 lumens <b>P3</b> - 2,900 lumens  <b>ARC2LED</b> <b>P1</b> - 1,500 lumens <b>P2</b> - 2,000 lumens <b>P3</b> - 3,000 lumens <b>P4</b> - 4,000 lumens <b>P5</b> - 6,500 lumens	<b>3000K</b> (80 CRI)  <b>4000K</b> (80 CRI)  <b>5000K</b> (80 CRI)	<b>MVOLT</b>  <b>347V</b>	<b>PE</b> – M-Volt Photocell  <b>FAO</b> - Field Adjustable Output  <b>E4WH</b> - Battery, 4W  <b>E8WC</b> - Battery, 8W cold temp (-20°C)	Dark Bronze  White  Black  Natural Aluminum  Sandstone

# Example Specification Sheet Ordering Tree

Ordering Information				EXAMPLE: ARC2 LED P2 40K MVOLT PE DDBXD			
Series	Package	Color Temperature	Voltage	Options		Finish	
ARC2 LED	P1	30K 3000K	MVOLT 347 <sup>1</sup>	E4WH	Emergency battery backup, CEC compliant (4W, 0°C min)	DDBXD	Dark bronze
	P2	40K 4000K		E8WC	Emergency battery backup, CEC compliant (8W, -20°C min)	DBLXD	Black
	P3	50K 5000K		PE	Photocell, Button Type	DNAXD	Natural aluminum
	P4			DMG	0-10V dimming wires pulled outside fixture (for use with an external control, ordered separately)	DWHXD	White
	P5			SPD	6kV surge protection	DSSXD	Sandstone
				FAO	Field adjustable light output device. Allows for easy adjustment to the desired light levels, from 20% to 100% <sup>2</sup>	DDBTXD	Textured dark bronze
						DBLBXD	Textured black
						DNATXD	Textured natural aluminum
						DWHGXD	Textured white
						DSSTXD	Textured sandstone

## Accessories

Ordered and shipped separately.

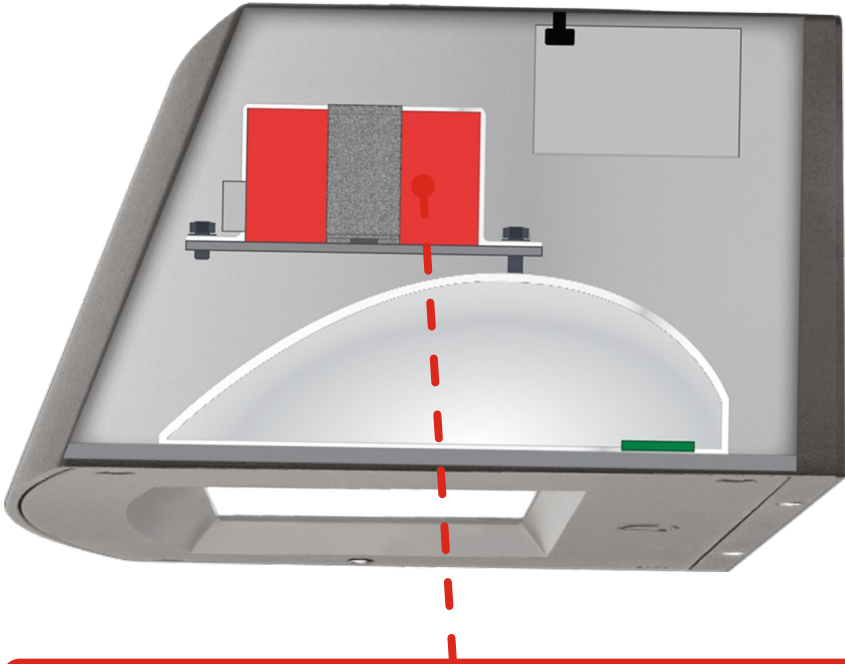
WSBBW DDBXD U

Surface - mounted back box (specify finish)

## NOTES

- 1 347V not available with E4WH and E8WC.
- 2 FAO not available with DMG.

# Emergency Egress Options



Integrated into the luminaire housing for a clean aesthetic

	Standard (0°C min)	Cold (-20°C min)
ARC1	4W (E4WH)	-
ARC2	4W (E4WH)	8W (E8WC)

## Sample Nomenclatures:

ARC1 LED P1 40K MVOLT **E4WH** DDBXD  
 ARC2 LED P2 40K MVOLT **E8WC** DDBXD



## Multi-Volt (120V – 277V) Photocontrol Option



Multi-volt (120-277V) button photocell option for dusk-to-dawn operation.

**Sample Nomenclature:**

ARC2 LED P2 40K MVOLT **PE** DDBXD

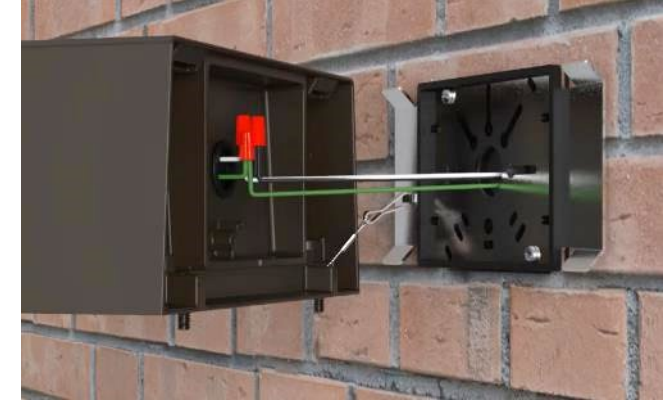
# Easy Installation



1. Install the luminaire mounting bracket.



2. Hook the tether to the mounting bracket.



3. Make the appropriate wiring connections.



4. Install the luminaire to the mounting bracket.



5. Secure the luminaire by tightening the set screws.

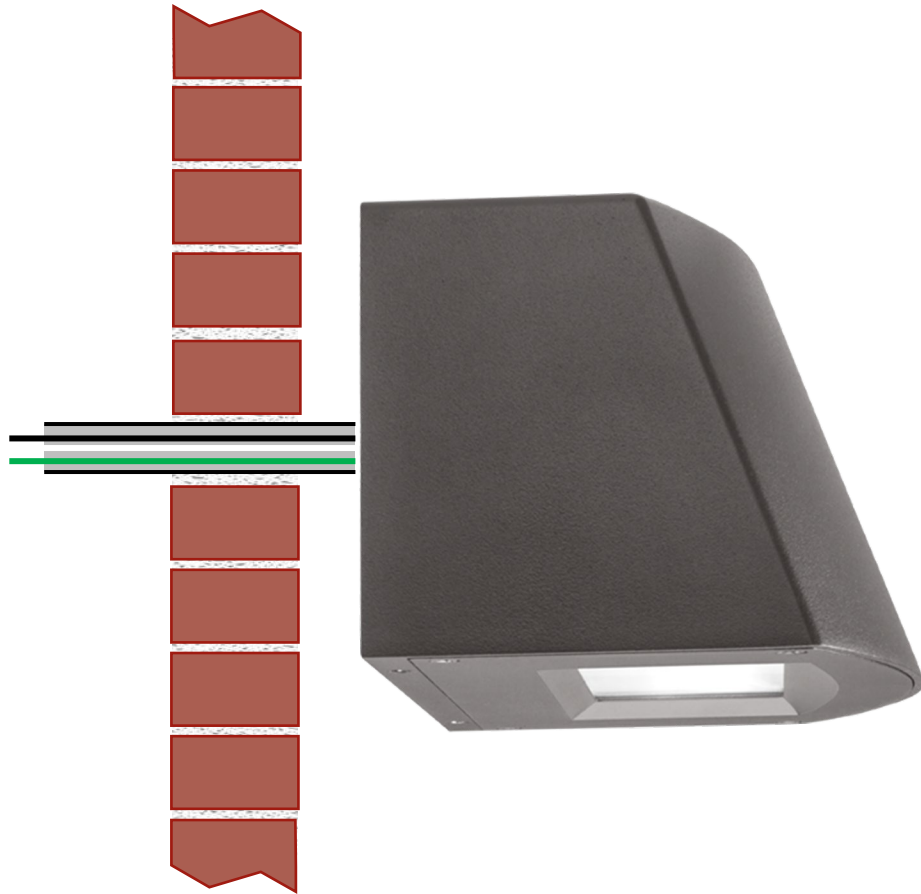


# The Lithonia Lighting® ARC LED: Installation Video

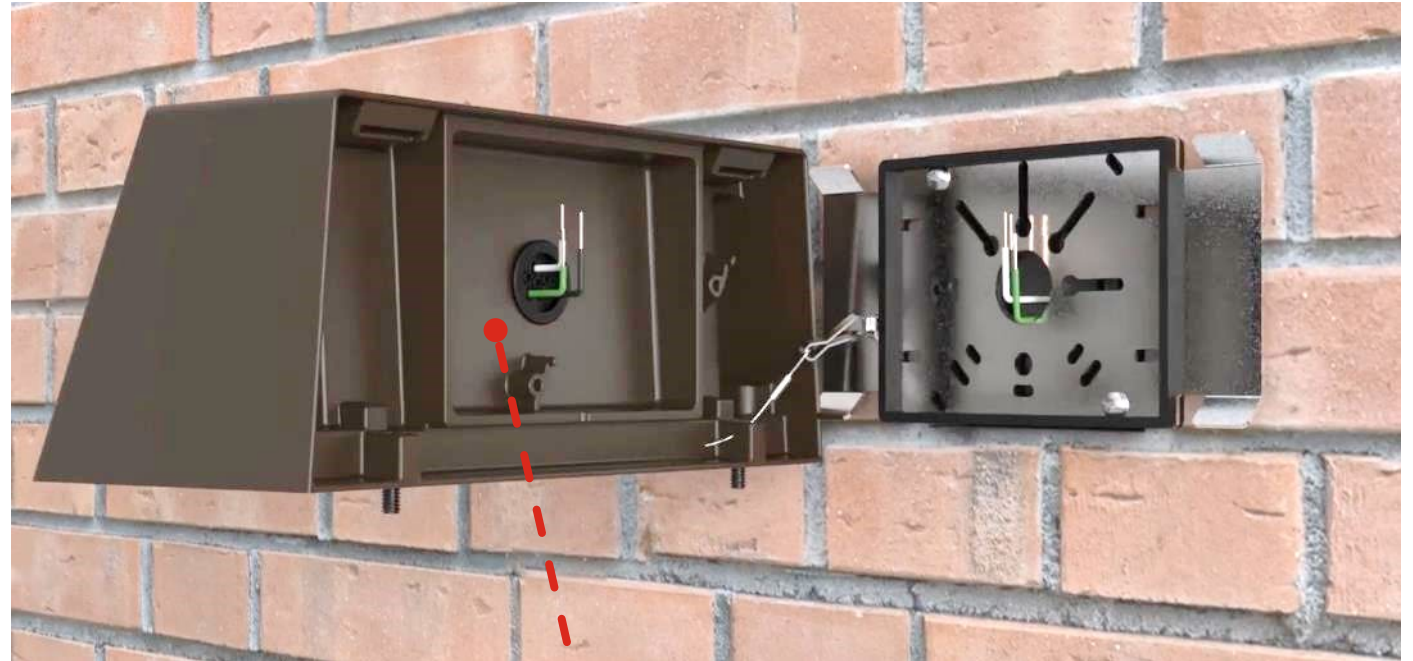




# Poke-Through Wiring

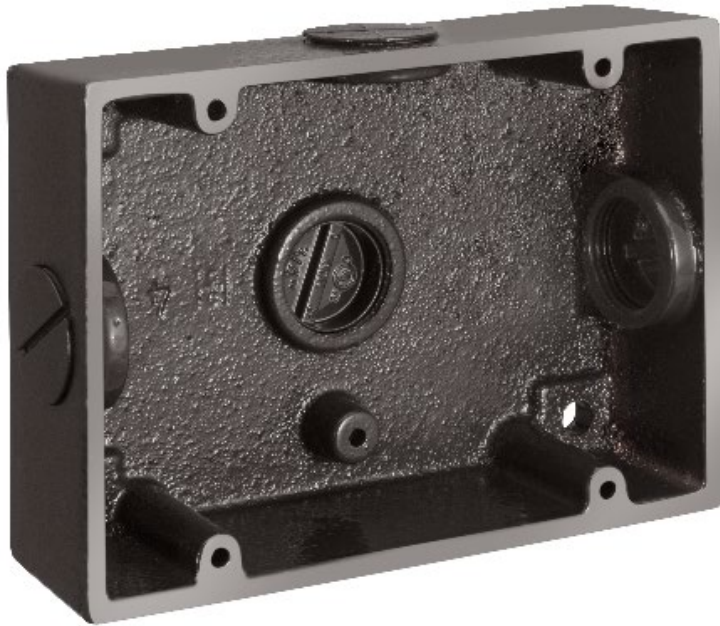


Change image



Integral wiring compartment allows for easy installation with “poke-through” wiring

## Surface Conduit Mounting Option



- Back-box for surface conduit wiring
- 3/4" threaded conduit hubs with plugs
- Ordered as an accessory

**Sample Nomenclature:** WSBBW DDBXD U



# Stock Product List

	Lumen Output	Color Temp	Description	CI Code	Stock Status*	UPC Code
ARC1	1,500	4000K	ARC1 LED P1 40K MVOLT DDBTXD	*269073	YES	00194994665595
		4000K	ARC1 LED P1 40K MVOLT <b>E4WH</b> DDBTXD	*26908L	YES	00194994666011
	3,000	4000K	ARC1 LED P3 40K MVOLT DDBTXD	*26907S	YES	00194994665786
ARC2	6,500	4000K	ARC2 LED P5 40K MVOLT DDBTXD	*26908R	YES	00194994666066

\* Stock available in California (WRDC), Illinois (MWDC) and Georgia (SEDC)

Made in North America for quick delivery (<3 weeks)  
on all non-stock configurations





# Product Positioning

## Specification

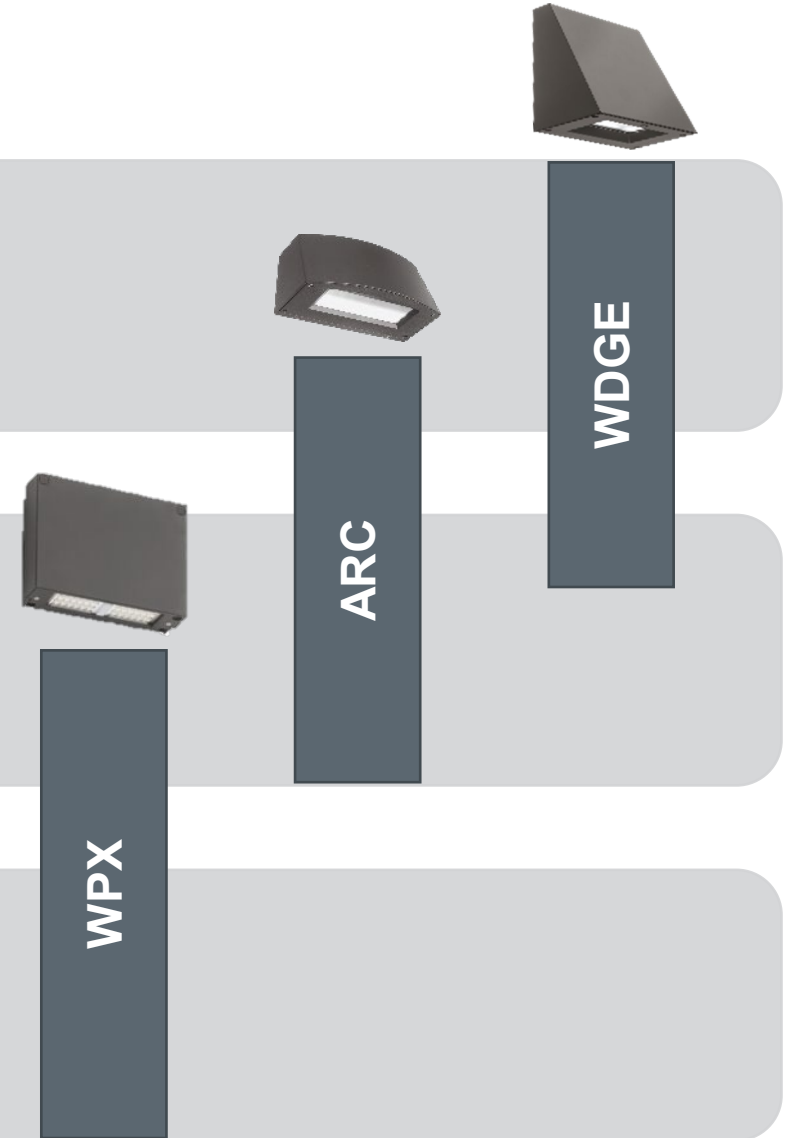
- Highly configurable
- Made to order
- 3-week delivery

## Design/Build

- Value engineered
- Key product options
- Some stock options

## Distributor Stock

- Always in stock
- Competitive price
- Key product options





Thank You