



HIGHLIGHTS

- Multi-function Portable Healthcare Light Stand with exam, task, night lighting and power control bar
- Lightweight and foldable design for ease of transportation, setup and storage
- Setup in under (5) minutes using (6) quick-connect pins
- Toolless mounting bracket included to secure exam light to horizontal arm
- Power control bar includes task light, night light, GFCI receptacle, switch for on/off control of exam light, and dimmer for task light. Night light includes automatic sensor control.
- Simple plug-in cord
- Included IV hanger bar eliminates need for separate IV pole
- Optional permanent fasteners



SPECIFICATIONS

Construction

Portable and foldable design. 11-gauge steel frame base with 2x2 steel wall tube (0.090 thickness) vertical support pole and horizontal support arm. Base support leveling feet adjustable from 1-3/4" to 2-3/4" high or optional lockable casters. Erected and assembled in the field using (6) supplied quick-connect pins. Optional permanent fasteners using 3/8" bolts, washers and nyloc nuts.

Power Control Bar

Includes task light, night light, 20A GFCI receptacle, switch for on/off control of exam light, and dimmer for task light. Night light includes automatic sensor control. Slips over vertical support tube and secured in place with (2) quick-connect pins or permanent fasteners.

Exam Light

Toolless mounting bracket (included) secures exam light to horizontal arm using (1) quick-connect pin or permanent fastener. Lithonia IBE 12000LM (included when ordering stand) exceeds 1100 Lux average light level requirement at the bed. 4000K. > 80 CRI in accordance with IES recommendations.

Task Light

LED task light integrated in power control bar. Lithonia OVFL LED 1RH P1. 948LM delivers 300 lux for task illumination. 4000K. >80 CRI in accordance with IES recommendations.

Night Light

Hidden sensor automatically controls night light. (5) adjustable light settings, including off.

IV Hanger Bar

Equipped with pre-installed bracket secured to stand. Includes (4) "S" hooks.

Finish

Gloss White. Powder coat paint for metal parts.

Electrical

120V (10ft) power cord with NEMA 5-20P 3-prong plug. Supplied equipment maximum load 125W. 20A branch circuit protection by others.

Environment

Ambient operating temperature from 0°C to 40°C.

Validation

UL/cUL listed for damp locations.

Government Procurement

BAA - Buy America(n) Act: Product qualifies as a domestic end product under the Buy American Act as implemented in the FAR

and DFARS. Product also qualifies as manufactured in the United States under DOT Buy America regulations.

BABA - Build America Buy America: Product qualifies as produced in the United States under the definitions of the Build America, Buy America Act. Please refer to www.acuitybrands.com/resources/buy-american for additional information.

Warranty

5-year limited warranty for exam light and task light. 1-year limited warranty for light stand and all other components. Complete warranty terms located at www.acuitybrands.com/support/customer-support/terms-and-conditions.

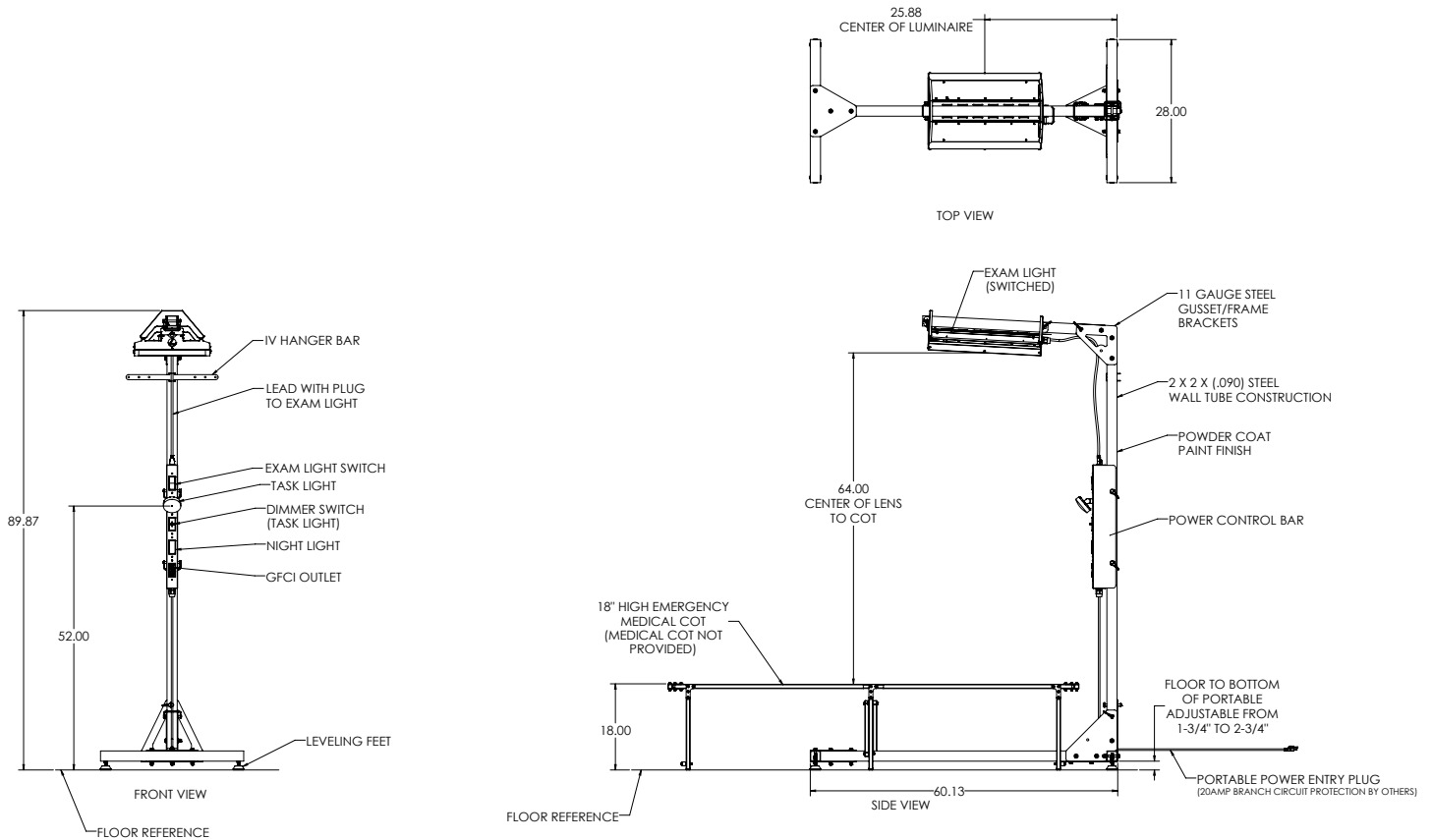
Notes

Portable Healthcare Light Stand (PHLS) for use with manufacturer approved equipment only. Medical cot not provided.

ORDERING INFORMATION Example: PHLS LVF IBEX1 120 DWH

Series	Base Type	Exam Light	Voltage	Options	Finish
PHLS *	LVF Leveling Feet CSS Casters	IBEX1* Lithonia IBE 12000LM	120 120VAC	PMF Permanent Fasteners (in lieu of quick-connect pins)	DWH Gloss White
* Order under Healthcare Lighting Brand		* Lithonia IBE specially adapted for use with PHLS			

DIMENSIONS



PORTABLE SETUP

Weight
95 lbs

