



## HIGHLIGHTS

- Multi-function Portable Healthcare Light Stand with exam, task, night lighting and power control bar
- Lightweight and foldable design for ease of transportation, setup and storage
- Setup in under (5) minutes using (6) quick-connect pins standard
- Toolless mounting bracket included to secure exam light to horizontal arm
- Power control bar includes task light, night light, GFCI receptacle, (2) switches for separate on/off control of exam light and task light. Night light includes automatic sensor control.
- Simple plug-in cord
- Included IV hanger bar eliminates need for separate IV pole
- Optional permanent fasteners

## SPECIFICATIONS

### Construction

Portable and foldable design. 11-gauge steel frame base with 2x2 steel wall tube (0.090 thickness) vertical support pole and horizontal support arm. Base support leveling feet adjustable from 1-3/4" to 2-3/4" high standard or optional lockable casters. Erected and assembled in the field using (6) supplied quick-connect pins standard. Optional permanent fasteners using 3/8" bolts, washers and nyloc nuts.

### Power Control Bar

Includes task light, night light, 20A GFCI receptacle, (2) switches for separate on/off control of exam light and task light. Night light includes automatic sensor control. Slips over vertical support tube and secured in place with (2) quick-connect pins standard or optional permanent fasteners.

### Exam Light

Toolless mounting bracket (included) secures exam light to horizontal arm using (1) quick-connect pin standard or optional permanent fastener. Lithonia IBE 12000LM (included when ordering stand) exceeds 1100 Lux average light level requirement at the bed. 4000K. > 80 CRI in accordance with IES recommendations. 90 CRI available if required by Army Corps of Engineers. Lead time will be extended. Consult factory.

### Task Light

LED task light integrated in power control bar. Lithonia OVFL LED 1RH P1. 948LM delivers 300 lux for task illumination. 4000K. >80 CRI in accordance with IES recommendations.

### Night Light

Hidden sensor automatically controls night light. (5) adjustable light settings, including off.

### IV Hanger Bar

Equipped with pre-installed bracket secured to stand. Includes (4) "S" hooks.

### Finish

Gloss White. Powder coat paint for metal parts.

### Electrical

120V (10ft) power cord with NEMA 5-20P 3-prong plug. Supplied equipment maximum load 125W. 20A branch circuit protection by others.

### Environment

Ambient operating temperature from -40°C to +40°C.

### Validation

UL/cUL listed for damp locations.

### Warranty

5-year limited warranty for exam light and task light. Complete

warranty terms located at [www.acuitybrands.com/support/customer-support/terms-and-conditions](http://www.acuitybrands.com/support/customer-support/terms-and-conditions).

### Notes

Actual performance may differ as a result of end-user environment and application. All values are design or typical values, measured under laboratory conditions at 25° C.

Portable Healthcare Light Stand (PHLS) for use with manufacturer approved equipment only.

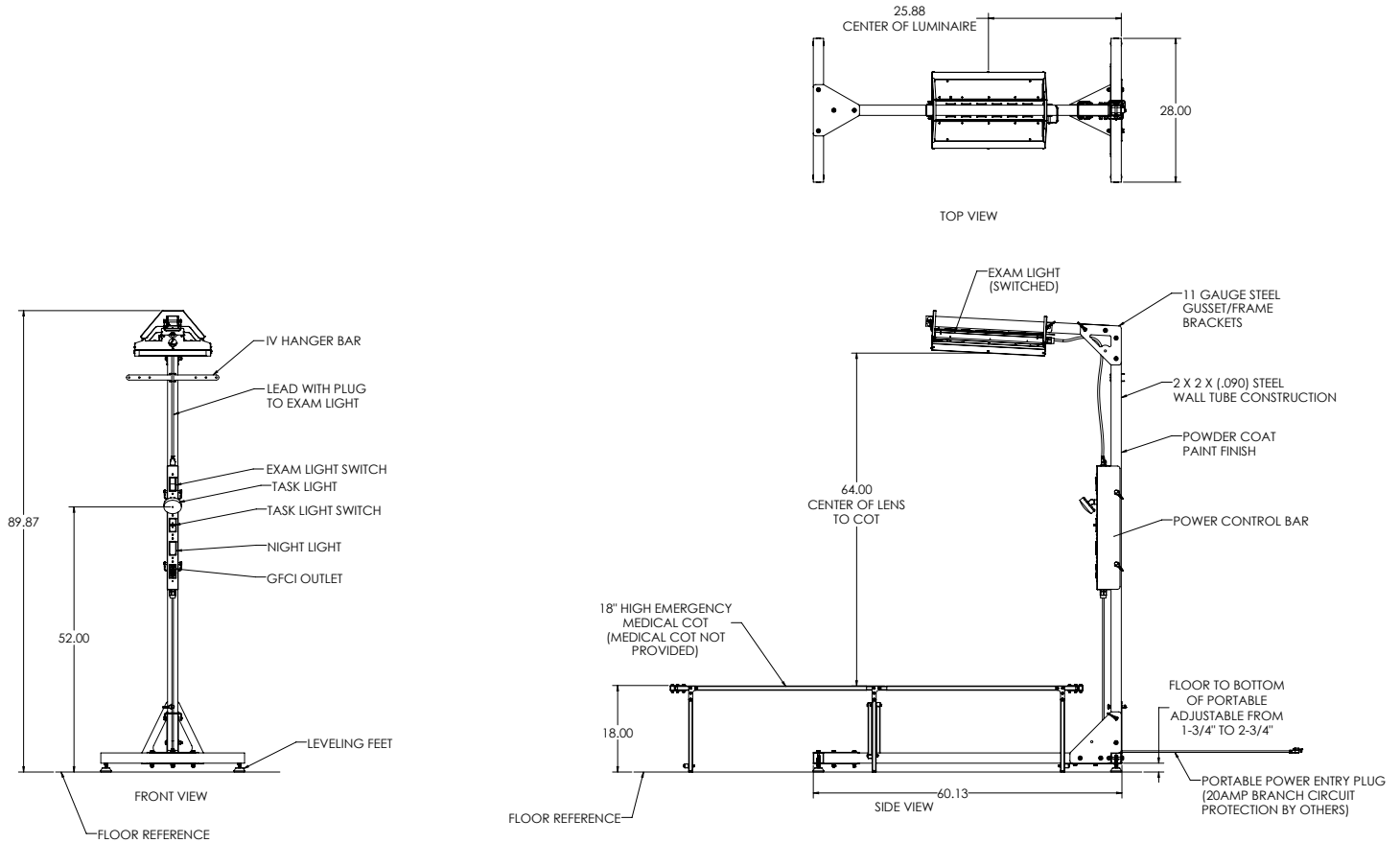
Light stand is Assembled in USA. IBE exam light is TAA compliant. If Buy American Act compliance is required, add USPOM to catalog number. Lead time will be extended. Consult factory.

Medical cot not provided.

## ORDERING INFORMATION Example: PHLS LVF IBEX180 120 DWH

Series	Base Type	Exam Light	Voltage	Options	Finish
PHLS *	LVF Leveling Feet CSS Casters	IBEX180 <sup>1</sup> Lithonia IBE 12000LM 80 CRI IBEX190 <sup>1,2</sup> Lithonia IBE 12000LM 90 CRI	120 120VAC	PMF Permanent Fasteners (in lieu of quick-connect pins)	DWH Gloss White
* Order under Healthcare Lighting Brand		<sup>1</sup> Lithonia IBE specially adapted for use with PHLS <sup>2</sup> Consult factory if 90 CRI is required per spec. Lead time will be extended.			

**DIMENSIONS**



**PORTABLE SETUP**

**NOTE: Two people required for setup**

**Weight**  
95 lbs

