



Typical Applications

Tunnels
Petro-Chemical Facilities
Shipping Ports
Parking Structures
Food & Beverage
Processing Facilities
Manufacturing
Waste Water Treatment
Many more commercial &
industrial applications!

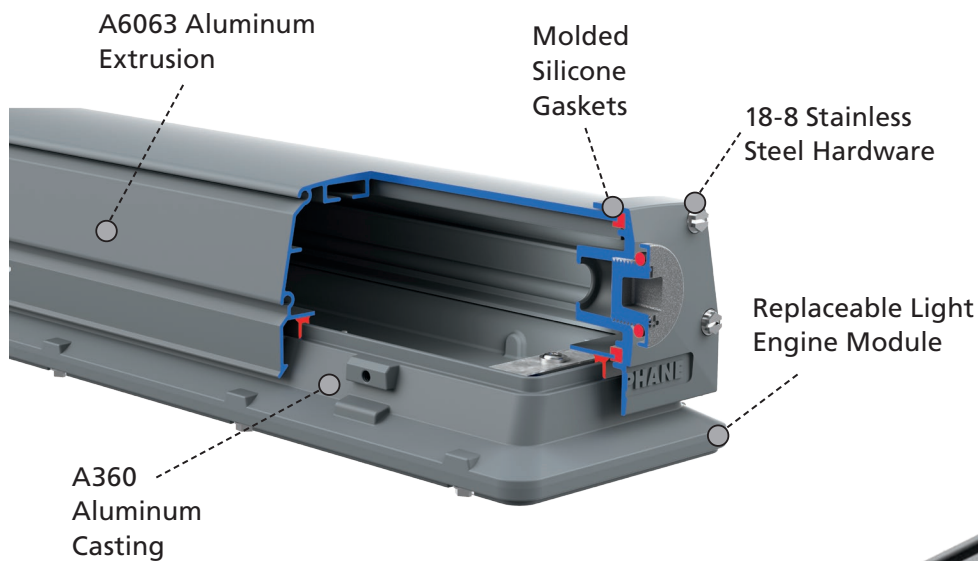
EMX/EMXH Low Bay

Hazardous Location Industrial
LED Linear Low Bay

Heavy Duty Performance Meets Innovation

The EMX/EMXH LED linear low bay takes industrial lighting to new levels of durability and design with high-performance hazardous listings and impressive ratings. This high abuse, high heat, high seal fixture is perfect for your hazardous & heavy industrial applications where strength and toughness are paramount.

Durable and Compact Design



Robust Performance

- + High efficiency LEDs and drivers capable for up to 159 LPWs
- + All aluminum housing for an up to 70° C ambient installation possibility
- + High output LEDs achieve up to 9,000 lumens per 2 foot section
- + Water-resistant seal design for IP69K rating



Ratings and Listings for Demanding Environments

- + CSA Hazardous Location C1D2, C2D2, C3
- + CSA Ambient up to 70° C
- + Wet Location Listed
- + NSF2 Splash Zone Listed
- + NEMA 4X Rated
- + IP65, IP66, IP67, IP69K Rated
- + 10kV Surge Suppression Standard
- + DLC Premium Standard and Parking Garage Listed



Other Features

- + L24: 3,000 – 9,000 lumens
- + L48: 6,000 – 28,000 lumens
- + CCT: 3000K, 3500K, 4000K, 5000K
- + CRI: 80 standard, 90 option available
- + Lens Options: clear, frosted, polycarbonate, glass
- + Distributions: medium, wide, DLC listed parking garage



Controls

- + rSBG Sensor (pictured right) for nLight® Networked Lighting Controls
- + XPoint™ Embedded Sensor
- + Standard SBGR Sensor



Mounting Options

Surface

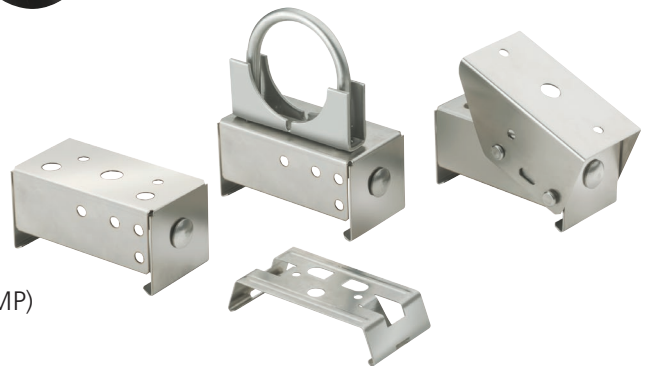
- + Standard Bracket
- + Rigid Mount Bracket (RMBK)
- + Rigid Mount Angle (RMBA)
- + Wall Mount (RMBK)
- + Wall Off-Set Mount (RMBA)

Suspended

- + Y-Toggle
- + Chain
- + Aircraft Cable
- + Pendant Monopoint (PMP)

Pole

- + Rigid Mount U-bolt (RMBU)



Warranty Five-year limited warranty. Full warranty terms located at www.acuitybrands.com/CustomerResources/Terms_and_conditions.aspx
Product specifications may change without notice. Please contact your local Holophane factory sales representative for the latest product information.