



HSTL™ Troffer

Surgeries and procedures require a focused hand and even more focused lighting. Using dual-color channels and optional nLight® controls, the new HSTL Troffer from Healthcare Lighting delivers powerful illumination and color accuracy for a medical team's visual acuity. See the difference in your surgical suite, clean room or exam procedure space.

- Listings: CSA, IP65 Standard, IP66, ISO5, MIL461EG, NSF
- Best-in-class efficacy up to 140 LPW with symmetric and asymmetric distributions
- Sizes and Lumen Packages:
2x2 3000LM-12000LM
2x4 3000LM-24000LM
1x4 3000LM-10000LM
- Surface, grid and flange mounting options
- 2700K, 3000K, 3500K, 4000K and 5000K CCTs with white, green and red LED colors
- 80, 90 or 95 CRI
- 120-277VAC; and 347V with power backup options
- 0-10V, DALI, Lutron Ecosystem
- nLight® wired and wireless options available



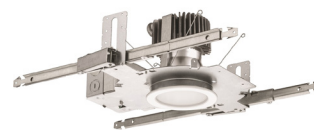


Products for Every Space

Create a complete solution with Acuity Brands healthcare products for your surgical suite and beyond.

Surgical Suite

Gotham® EVO® 6" Downlight Surgical Suite - A high performance solid-state recessed luminaire designed specifically for surgical suite applications.



gotham®

MRI + Imaging

Gotham® EVO® 6" LED Round MRI Downlight - Meets technical standards with non-ferrous construction, electrical and EMI requirements, remote driver considerations and MIL-STD compliance.



Nurse's Station

Whisper LED Troffer by Mark Architectural Lighting™ - Designed with gently sloping side panels for depth and appealing angles to create a clean and simple look.



MARK
ARCHITECTURAL LIGHTING

Patient Rooms

Trilume PCX by Healthcare Lighting® - Provides patient room lighting that meets recommended levels for patient and caregiver, with the added value of simply-integrated networked controls.



HEALTHCARE
LIGHTING®

For more information and full product offering, please visit

www.acuitybrands.com/healthcare