



TWH LED

LED Wall Luminaire



Catalog Number

Notes

Type

Hit the Tab key or mouse over the page to see all interactive elements.

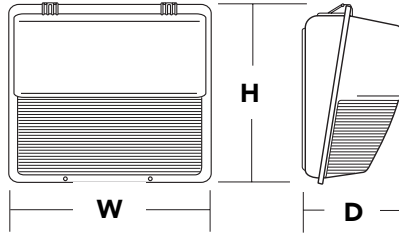
Specifications

Width: 16-1/4"
(41.3 cm)

Height: 15-3/4"
(40.0 cm)

Depth: 8"
(20.3 cm)

Weight: 28 lbs
(12.7 kg)



Introduction

The TWH LED offers a classic appearance and is powered by advanced LEDs.

The new TWH LED luminaire is powerful yet energy efficient, capable of replacing up to a 400W metal halide luminaire while saving up to 83% in energy costs. Offering an expected service life of more than 20 years, the TWH LED eliminates frequent lamp and ballast replacements associated with traditional technologies.

Ordering Information

EXAMPLE: TWH LED P2 50K T3M MVOLT DDBXD

Series	Power Package	Color temperature	Distribution	Voltage	Control Options	Other Options	Finish <i>(required)</i>
TWH LED	P1 ¹ P2 P3	30K 40K 50K	T3M Type III Medium	MVOLT ² 120 208 240 277 347 ¹ 480 ¹	Shipped installed PER NEMA twist-lock receptacle only (no controls) PE Photoelectric cell, button type ³ PER ⁷ Seven-wire receptacle only (control ordered separate)	Shipped installed SF Single fuse (120, 277, 347V) DF Double fuse (208, 240, 480V) TP Tamper proof screws SPD Separate surge protection Shipped separately⁴ VG Vandal guard WG Wire guard	DDBXD Dark bronze DBLXD Black DNAXD Natural aluminum DWHXD White DDBTXD Textured dark bronze DBL BXD Textured black DNATXD Textured natural aluminum DWHGXD Textured white

Accessories

Ordered and shipped separately.

DLL127F 1.5 JU	Photocell - SSL twist-lock (120-277V) ⁵
DLL347 1.5 CUL JU	Photocell - SSL twist-lock (347V) ⁵
DLL480 1.5 CUL JU	Photocell - SSL twist-lock (480V) ⁵
DSHORT SBK U	Shorting cap ⁶
TWHVG U	Vandal guard accessory
TWHWG U	Wire guard accessory
RK1 PEB SHLD U	Button style photocell shield

For more control options, visit [DTL](#) and [ROAM](#) online.

NOTES

- P1 is not available with 347V and 480V.
- MVOLT driver operates on any line voltage from 120-277V (50/60 Hz).
- The photocell is not voltage specific when ordering with MVOLT. It will operate from 120-277V. Not available 480V.
- VG and WG options cannot be installed together. Also available as a separate accessory; see Accessories information at left. Requires field modification (only when ordered as a separate accessory).
- Requires luminaire to be specified with PER option. Ordered and shipped as a separate line item.
- Included when ordering PER.



COMMERCIAL OUTDOOR

One Lithonia Way • Conyers, Georgia 30012 • Phone: 1-800-705-SERV (7378) • www.lithonia.com

TWH-LED-2018-Upgrade
Rev. 11/30/22

Performance Data

Lumen Output

Lumen values are from photometric tests performed in accordance with IESNA LM-79-08. Data is considered to be representative of the configurations shown, within the tolerances allowed by Lighting Facts. Contact factory for performance data on any configurations not shown here.

Power Package	System Watts	30K (3000K, 70 CRI)		40K / 50K (4000K / 5000K, 70 CRI)	
		Lumens	LPW	Lumens	LPW
		P1	27W	3,206	119
P2	58W	6,507	112	7,073	122
P3	78W	8,477	109	9,214	118

Lumen Ambient Temperature (LAT) Multipliers

Use these factors to determine relative lumen output for average ambient temperatures from 0-40°C (32-104°F).

Ambient		Lumen Multiplier
0°C	32°F	1.05
10°C	50°F	1.03
20°C	68°F	1.01
25°C	77°F	1.00
30°C	86°F	0.99
40°C	104°F	0.97

Projected LED Lumen Maintenance

Data references the extrapolated performance projections for the **TWH LED P3** platform in a **25°C ambient**, based on 10,000 hours of LED testing (tested per IESNA LM-80-08 and projected per IESNA TM-21-11).

To calculate LLF, use the lumen maintenance factor that corresponds to the desired number of operating hours below. For other lumen maintenance values, contact factory.

Operating Hours	0	25,000	50,000	100,000
Lumen Maintenance Factor	1.00	1.00	0.98	0.93

Electrical Load

Power Package	System Watts	Current (A)					
		120	208	240	277	347	480
P1	27W	0.52	0.30	0.26	0.23	0.18	0.13
P2	58W	0.24	0.14	0.12	0.11	0.08	0.06
P3	78W	0.7	0.41	0.36	0.3	0.23	0.12

Options and Accessories



VG - Vandal guard



WG - Wire guard

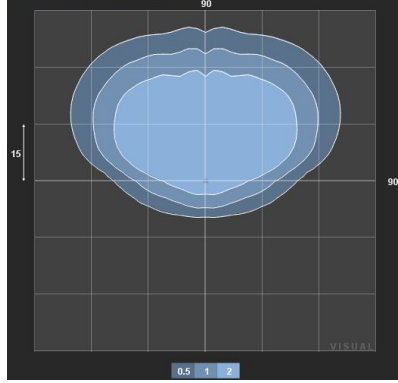
Photometric Diagrams

To see complete photometric reports or download .ies files for this product, visit Lithonia Lighting's [TWH LED homepage](#).
Tested in accordance with IESNA LM-79 and LM-80 standards

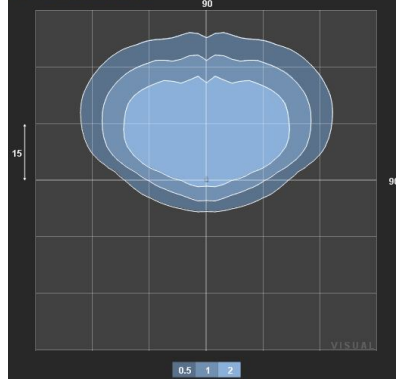
LEGEND

- 0.5 fc
- 1.0 fc
- 2.0 fc

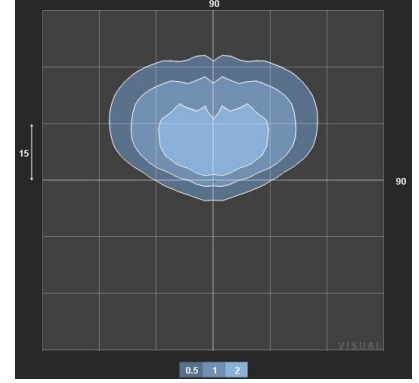
TWH LED P3 50K T3M MVOLT Mounting height - 15'



TWH LED P2 50K T3M MVOLT Mounting height - 15'



TWH LED P1 50K T3M MVOLT Mounting height - 15'



FEATURES & SPECIFICATIONS

INTENDED USE

The energy savings, long life and easy-to-install design of the TWH LED make it the smart choice for building-mounted doorway and pathway illumination for nearly any facility.

CONSTRUCTION

Die-cast aluminum housing has an impact-resistant, tempered glass lens that is fully gasketed. Modular design allows for ease of maintenance. The LED driver is mounted to the front casting to thermally isolate it from the light engine for low operating temperature and long life. Housing is completely sealed against moisture and environmental contaminants.

FINISH

Exterior parts are protected by a zinc-infused Super Durable TGIC thermoset powder coat finish that provides superior resistance to corrosion and weathering. A tightly controlled multi-stage process ensures a minimum 3 mils thickness for a finish that can withstand extreme climate changes without cracking or peeling. Available in textured and non-textured finishes.

OPTICS

Protective glass lens covers the light engine's precision-molded proprietary acrylic lenses. Light engines are available in 3000K, 4000K and 5000K configurations.

ELECTRICAL

Light engine(s) consist of 72 high-efficacy LEDs mounted to a metal-core circuit board and integral aluminum heat sink to maximize heat dissipation and promote long life (L93/100,000 hrs at 25°C). The electronic driver has a power factor of >90%, THD <20%, and a minimum 6 KV surge rating. When ordering the SPD option, a separate surge protection device is installed within the luminaire which meets a minimum Category C low operation (per ANSI/IEEE C62.41.2).

INSTALLATION

Back housing is separated from front housing, eliminating ballast weight and promoting easy handling. Top 3/4" threaded wiring access. Back access through removable 3/4" knockout. Feed-thru wiring can be achieved by using a conduit tee. Mount on any vertical surface. Not recommended in applications where a sprayed stream of water can come in direct contact with glass lens.

LISTINGS

UL listed for use in the US and Canada. Suitable for use in wet locations. Rated for -40°C minimum operating temperature.

DesignLights Consortium® (DLC) Premium qualified product and DLC qualified product. Not all versions of this product may be DLC Premium qualified or DLC qualified. Please check the DLC Qualified Products List at www.designlights.org/QPL to confirm which versions are qualified.

WARRANTY

5-year limited warranty. This is the only warranty provided and no other statements in this specification sheet create any warranty of any kind. All other express and implied warranties are disclaimed. Complete warranty terms located at: www.acuitybrands.com/support/warranty/terms-and-conditions

Note: Actual performance may differ as a result of end-user environment and application. All values are design or typical values, measured under laboratory conditions at 25 °C. Specifications subject to change without notice.

