

PLANAR

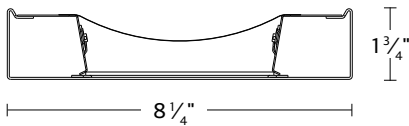
I/D PENDANT

HIGHLIGHTS

- Total System Integration features 5-year limited warranty by Acuity Brands covering all components and construction
- 4' and 8' sections
- Up to 140lm/w
- Seven distributions available (see page 2)
- Enhanced batwing distribution through optical film
- Flicker-free dimming to dark (0.1%) powered by eldoLED® driver
- Integrated nLight® for system networking wired and wireless (optional)
- Integrated sensor for daylight dimming and/or occupancy detection (optional)
- Sculptured and flat end caps
- White, black or silver in a semi-gloss, fine textured finish. RAL color options also available.
- QuickShip option available

DIMENSIONS

Section View



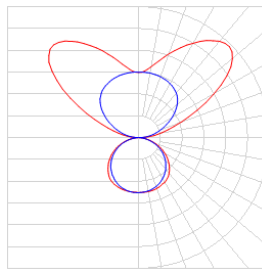
FIXTURE PERFORMANCE

Nominal Lumens/Foot	ID800LMF	ID1000LMF	ID1300LMF	ID1500LMF
Delivered Lumens/Foot	809	1014	1320	1511
Input Watts/Foot	5	6	8	8
Lumens/Watt	165	169	169	168

Based on a 4', 80CRI, 35K, 70/30 standard distribution.

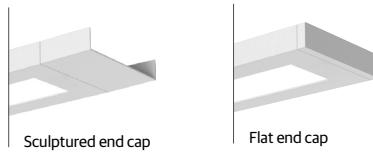


DISTRIBUTION

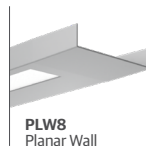


70/30 (Standard)

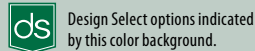
DETAILS



COMPANION LUMINAIRE(S)



PLW8
Planar Wall



ORDERING

Example: PLN8 LLP 32FT MSL8 80CRI 35K ID1000LMF 70/30 MINI MVOLT WHSG NLIGHT FLEP F1/36A WHTCY WCRD

Series	Plan	Total Run Length	Max Section Length	Direct Light Source Color Rendering	Direct LED Color Temp
PLN8 Planar Indirect/Direct	LLP Longest Length Possible LSL Linear Same Length LCB Linear Center Balanced	_FT Specify continuous run length, in 4' increments. Unit length may affect available options.	MSL4 4' MSL8 8'	80CRI 80 CRI 90CRI 90 CRI	27K 2700K 30K 3000K 35K 3500K 40K 4000K 50K 5000K

Indirect/Direct LED Light Output	Indirect/Direct Intensity Ratio	Switching	Minimum Dimming Level	Voltage
ID1000LMF 1000 Nominal Lumens Per Foot ID1300LMF 1300 Nominal Lumens Per Foot ID1500LMF 1500 Nominal Lumens Per Foot ID800LMF 800 Nominal Lumens Per Foot	70/30 70% Up, 30% Down (Standard) 60/40 60% Up, 40% Down 50/50 50% Up, 50% Down 40/60 40% Up, 60% Down 30/70 30% Up, 70% Down 20/80 20% Up, 80% Down 10/90 10% Up, 90% Down Nominal distribution. Refer to photometric tests for exact distribution.	SCT Single Circuit	MINI Constant current, dimming to 1% DARK Constant current, dimming to 0.1%	MVOLT Multi-volt, 120-277 120 120V 277 277V 347* 347V *J-box mount, step down transformer, 1 per section. Not available with NLIGHT or F2 mount.

Finish	Emergency Options	Control Input	Primary Sensor	Secondary Sensor	End Option
WHSG White, Satin BKSG Black, Satin SLVT Silver, Satin RALTB RAL Paint Finish RALTB is for pricing only. Replace with applicable RAL number & finish when placing order.	_E10WLCP* 4' Section with 10 Watt Battery Pack, Constant Power with Self Diagnostics, T20 Compliant _EC** 4' Section with Emergency Circuit Emergency type is installed in last 4' of luminaire run. Separate feed required. *E10WLCP not available with CSA. **If 4FT MSL4 EC is needed, consult factory. If EC with CSA, entire section must have EC, i.e., if MSL8, must select 2EC.	ZT 0-10V control NLIGHT nLight enabled NLTAIR2 nLight AIR (wireless) enable DALI* DALI compatible *Not available with sensors. Only available with DARK.	(blank) Single zone, no sensor PDT_* Standalone occupancy daylight sensor ADC_* Standalone daylight dimming sensor APDT_** Dual technology occupancy sensor and daylight dimming sensor APIR_*** Passive infrared occupancy sensor and daylight dimming sensor *Not available with NLTAIR2 **Available with ZT, NLIGHT & NLTAIR2 ***Only available with NLTAIR2	(blank) Single zone, no sensor SPDT_* Standalone occupancy daylight sensor SADC* Standalone daylight dimming sensor SAPDT_** Dual technology occupancy sensor and daylight dimming sensor SAPIR_*** Passive infrared occupancy sensor and daylight dimming sensor *Not available with NLTAIR2 **Available with ZT, NLIGHT & NLTAIR2 ***Only available with NLTAIR2	SCEP Sculptured End Cap FLEP Flat End Cap

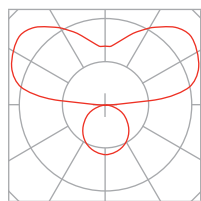
Mounting Type	Overall Suspension	Canopy Color	Cord Color	Dust Cover	Options
F1/ T-bar ceiling (universal mounting bracket) F1A/ T-bar ceiling (UMB with integrated J-box) F2/ Hard ceiling (horizontal J-box)	36A 36" adjustable 72A 72" adjustable 144A 144" adjustable *Measured from ceiling to bottom of luminaire	WHTCY White canopy (Default) BLKCY* Black Canopy *Not available with NLIGHT	WCRD White cord (Default) BCRD* Black cord w/Black Cord Manager *Not available with NLIGHT	DC Dust Cover	(blank) No option MCSJ¹ Support canopy to match feed canopy MCSJ² Matching Canopy for j-box mounting at non-power feed support locations. OJB³ Offset J-Box at Feed Location SLP Sloped Ceiling ELH⁴ Emergency through wiring w/separate neutrals - single EM Feed at opposite end of normal ELS2⁴ Emergency through wiring w/separate neutrals - single EM feed at same end of normal. CP⁵ Chicago Plenum CSA Manufactured to Canadian Standards IND⁶ Individual Unit 1. MCS is not available with OJB. 2. MCSJ is only available with F2 mounting. 3. OJB is not available with MCS. 4. ELH & ELS2 are not available with CSA. 5. CP is only available with F1A mounting type. 6. IND is not available with F1A, SCEP, OJB or SLP.



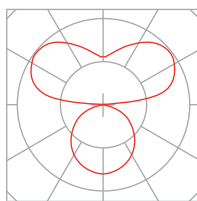
Items marked by a shaded background qualify for the Design Select program and ship in 15 days or less. To learn more about Design Select, visit www.acuitybrands.com/designselect.
*See ordering tree for details

Maximum order quantity for Design Select lead times is 500 linear feet.

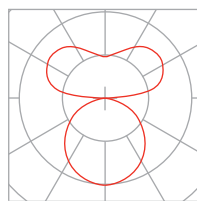
PHOTOMETRICS



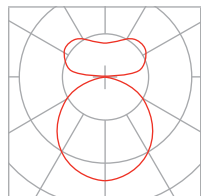
ID1000LMF 70/30 80CRI 35K
70% up/30% down
1014 Lumens per Foot
169 lm/W



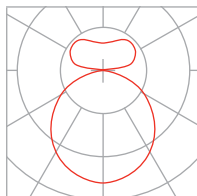
ID1000LMF 60/40 80CRI 35K
60% up/40% down
968 Lumens per Foot
162 lm/W



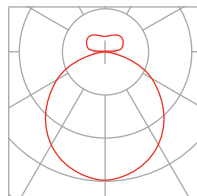
ID1000LMF 50/50 80CRI 35K
50% up/50% down
929 Lumens per Foot
155 lm/W



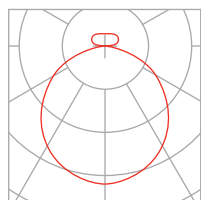
ID1000LMF 40/60 80CRI 35K
40% up/ 60% down
878 Lumens per Foot
147 lm/W



ID1000LMF 30/70 80CRI 35K
30% up/ 70% down
868 Lumens per Foot
145 lm/W



ID1000LMF 20/80 80CRI 35K
20% up/ 80% down
810 Lumens per Foot
135 lm/W



ID1000LMF 10/90 80CRI 35K
10% up/ 90% down
802 Lumens per Foot
134 lm/W

How to Calculate Delivered Lumens in Emergency Mode

Use the formula below to determine the delivered lumens in emergency mode

Delivered Lumens = 1.25 x P x LPW

P = Output power of emergency driver. P = 10W for E10WLCP option.

LPW = Lumen per watt rating of the luminaire. This information is available on the ABL luminaire spec sheet. LPW = Lumen per watt rating of the luminaire. LPW information available in Performance Data section.

CCT SCALING CHART

CCT	CRI	MULTIPLIER
30K	80CRI	0.98
35K	80CRI	1
40K	80CRI	1.02
	90CRI	0.83

*Base fixture 4FT, 80CRI, 35K, ID1000LMF

OPTICAL SCALING CHARTS

Distribution	MULTIPLIER
60/40	0.96
50/50	0.93
40/60	0.82
30/70	0.88
20/80	0.85
10/90	0.82

EXPECTED LIFE: L80 @ 60,000 HOURS

MOST COMMON MOUNTING TYPES AND OPTIONS

Options available for this specific luminaire are checked in the boxes below.

Mounting Type

- F1/

For use with most T-Bar and screw slot grid ceilings. Designed for on-grid and off-grid applications.
- F2/

For use with recessed or surface mount horizontal J-box applications.
- F1A/

For use with most T-Bar grid ceilings. Designed for on-grid applications.
Comes complete with J-box with built-in cutout to go over grid

Mounting Options

- MCS

Matching canopy at support for aesthetics.
- MCSJ

Matching canopy at for j-box mounting at non-power feed support locations
- OJB

Offset J-box at feed
- SLP OJB

Sloped ceiling couplers and offset j-box option at feed.

✔ Indicates mounting options available with this luminaire.

✔ F1/

Power Feed

Support

✔ F1/MCS

Power Feed

Support

✔ F1A/

Power Feed

Support

✔ F1A/MCS

Power Feed

Support

✔ F2/

Power Feed

Support

✔ F2/MCS

Power Feed

Support

✔ F2/MCSJ

Power Feed

Support

✔ F2/OJB

Power Feed

Support

✔ F2/SLP OJB

Power Feed

Support

LINEAR PLAN

Mark Lighting offers the ability to provide a continuous run plan to suit your requirements by optionally offering three different methods of configuration.

LLP- Linear Longest Possible

In this configuration, the longest length available is optimized, resulting in the fewest segments and mounting locations. Caution should be used where balanced appearance is a concern. Example: 20 FT run would have 2, 8 FT segments and 1, 4 FT segment at the end of the run.

LLP	8 FT	8 FT	4FT
-----	------	------	-----

LCB- Linear Center Balanced:

This configuration incorporates the longest center segment(s) along with any additional lengths required to fill the run length, added to the run ends. Example: 16 FT run would have 2, 4 FT segments (one at each end) and 1, 8 FT segment in the center.

LCB	4 FT	8 FT	4FT
-----	------	------	-----

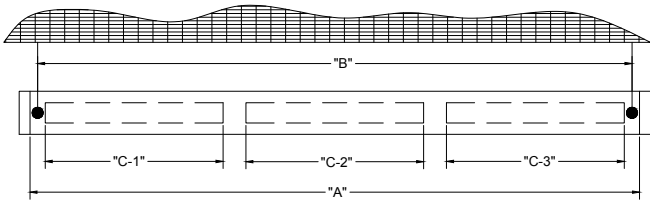
LSL- Linear Same Length:

In this configuration, each segment is the same length and is standardized based on the longest length available and is the only option provided. Because it is dependent on one segment length there are mathematical limitations on what overall row lengths can be achieved. Example: 20 FT row would be achieved with 5, 4 FT long segments equaling 20 FT (nominal).

LSL	4FT	4FT	4FT	4FT	4FT
-----	-----	-----	-----	-----	-----

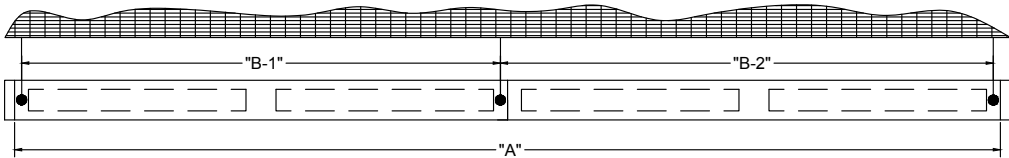
WEIGHTS & SUPPORT SPACING

Suspension spacing equals section length. Default location shown.



"Beginning of run fixture's center to centersupport spacing will be 13/16" less than the nominal fixture section length. Refer to Individual Fixture table for specific dimensions"

INDIVIDUAL FIXTURES (MOUNTING)					
ORDER LENGTH	"A" O.A.L.	"B"	FLAT END CAP	SCULPTED END CAP	APPROX. WEIGHT
4FT	4'-0" [1220 mm]	3'-11 3/16" [1121 mm]	1 1/4" [31.8 mm]	8" [203.2 mm]	22 lbs [10 kg]
8FT	8'-0" [2438 mm]	7'-11 3/16" [2418 mm]	1 1/4" [31.8 mm]	8" [203.2 mm]	38 lbs [17 kg]



1FT INCREMENTS WITH A MINIMUM OF 4FT (EXCEPT 7 FT)

LEGEND: A - Fixture Overall Length (excluding standard end caps on both ends). B - Fixture Suspension Points center-to-center distance

INDIVIDUAL FIXTURES (MOUNTING)						
ORDER LENGTH	"A" O.A.L.	"B-1"	"B-2"	FLAT END CAP	SCULPTED END CAP	APPROX. WEIGHT
4' SECTION	8'-0" [2438 mm]	3'-11 3/16" [1200 mm]	4'-0" [1220 mm]	1 1/4" [31.8 mm]	8" [203.2 mm]	44 lbs [20 kg]
4' SECTION	8'-0" [2438 mm]	7'-11 3/16" [2418 mm]	4'-0" [1220 mm]	1 1/4" [31.8 mm]	8" [203.2 mm]	60 lbs [17 kg]
8' SECTION	16'-0" [4877 mm]	7'-11 3/16" [2418 mm]	8'-0" [2438 mm]	1 1/4" [31.8 mm]	8" [203.2 mm]	76 lbs [35 kg]

INTELLIGENT LUMINAIRE CHARTS

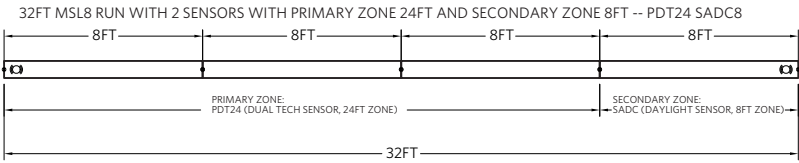
Choose nomenclature from these columns					
Driver Configurations	Minimum Dimming Level	Control Input	Driver	Dimming Range	Notes
	MIN1	+ ZT	= 0-10V eldoLED ECOdrive	100 to 1%	Linear dimming
	MIN1	+ NLIGHT	= 0-10V eldoLED ECOdrive	100 to 1%	Logarithmic dimming
	MIN1	+ NLTAIR2	= DALI compatible eldoLED SOLOdrive	100 to 1%	Linear dimming
	DARK	+ ZT	= 0-10V eldoLED SOLOdrive	100 to 0.1%	Linear dimming
	DARK	+ NLIGHT	= 0-10V eldoLED SOLOdrive	100 to 0.1%	Logarithmic dimming
	DARK	+ NLTAIR2	= DALI compatible eldoLED SOLOdrive	100 to 0.1%	Linear dimming
	DARK	+ DALI	= DALI compatible eldoLED SOLOdrive	100 to 0.1%	Linear dimming
Control + Sensor Configurations	Control Input	Sensor	Sensor	Notes	
	ZT	+ ADC	= SensorSwitch MSD EZ ADC	0-10V control Daylight Sensor	
	ZT	+ PDT	= SensorSwitch MSD PDT 7 EZ	0-10V control Occupancy Sensor	
	ZT	+ APDT	= SensorSwitch MSD PDT 7 EZ ADC	0-10V control Daylight with Occupancy Sensor	
	NLIGHT	+ ADC	= SensorSwitch NES ADCX	nLight control Daylight Sensor	
	NLIGHT	+ PDT	= SensorSwitch NES PDT 7	nLight control Occupancy Sensor	
	NLIGHT	+ APDT	= SensorSwitch NES 7 PDT ADCX	nLight control Daylight with Occupancy Sensor	
	NLTAIR2	+ RIO	= SensorSwitch RIO EZDL 90D G2	nLight Air fixture embedded network interface	
	NLTAIR2	+ APIR	= SensorSwitch RES7 G2	nLight Air PIR Daylight Sensor	
	NLTAIR2	+ APDT	= SensorSwitch RES7 PDT G2	nLight Air Dul Tech PIR/Microphone Daylight Sensor	

Daylight harvesting deactivated by default and field programmed per sequence of operations.

Luminaires specified with nLight system networking ship with one RJ-45 connector integrated into the luminaire, 10' of Cat-5e cable and a splitter to control the entire luminaire row (depending on wattage/voltage limitations).

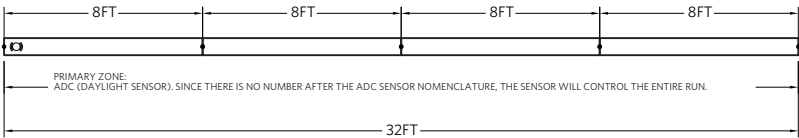
INTEGRATED SENSOR LAYOUT

CORRECT:



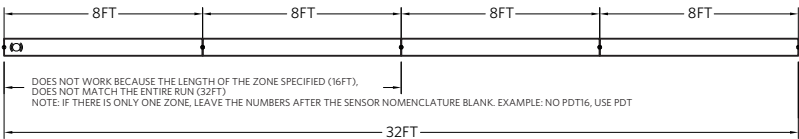
- Notes:
- Only one sensor per zone
 - At the most, the entire run can only have 2 sensors (thus 2 sensors zones at the most)
 - Sensor zone can not split fixture sections
 - No overlapping zones
 - NLIGHT - Nio goes where the nlight power packs are - power packs are one per zone
 - One nLight or NLTAIR2 device per zone or per sensor, for multiple zones without sensors contact factory

32FT MSL8 RUN WITH 1 SENSOR ALL ONE ZONE -- ADC

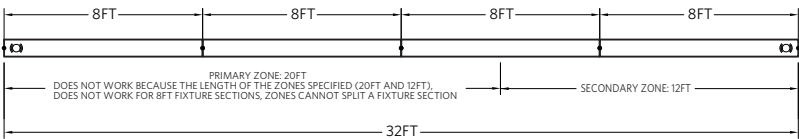


INCORRECT:

32FT MSL8 RUN WITH 1 SENSOR ALL ONE ZONE -- PDT16



32FT MSL8 RUN WITH 2 SENSORS WITH PRIMARY ZONE 20FT AND SECONDARY ZONE 12FT -- PDT20 SADC12



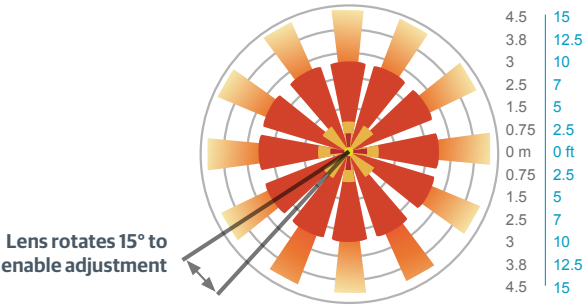
OCCUPANCY DETECTION COVERAGE

At the 7.5 ft (2.9 m) hanging height of a typical pendant mount fixture the sensor provides 10 ft (3.05 m) radial detection of small motion. At a 9 ft (2.74 m) hanging height the radius is 12 ft (3.66 m) for small motion.

Adequate for walking motion detection from mounting heights between 7.5 ft (2.29 m) and 20 ft (6.10 m).

Initial detection will occur earlier when walking across sensor's field of view than when walking directly at sensor.

Initial detection of walking motion into long coverage segment will occur at distances of 2x the mounting height up to 15 ft (4.57 m) and 1.75x up to 20 ft (6.10 m). Lens assembly rotates 15° to enable adjustment in order to line up long segments.



COMPATIBLE nLIGHT COMPONENTS WITH INTEGRATED CONTROLS



nPODMA DX WH



nPODMA 2P DX WH



nPODMA 4P DX WH



nPODMA 2L WH



nPOD Unitouch WH



rPODBA

SPECIFICATIONS

Housing

Nominal 8 1/4" x 1 3/4" rectangular housing is formed from cold-rolled steel.

End Caps

Die-cast end caps are mechanically attached with no exposed fasteners. Sculptured end cap standard. For flat end caps, choose option FLEP.

Finish

White, black or silver in a semi-gloss, fine textured finish. RAL color options also available.

Luminaire Length

4', 8' lengths in a single section. Using internal joiners, 4' and 8' sections can be joined to form longer rows. For total luminaire length, add 5/8" for each flat end cap and 4" for each sculptured end cap. Using internal joiners, 4' and 8' sections can be joined to form longer rows.

Source

Two LED lumen packages and three available color temperature options (3000K, 3500K, 4000K) — all within 2.5 MacAdam ellipses.

Optics

Optical system consists of high performance lens, diffusers and metal reflectors.

Dimming Driver

eldoLED® driver provides "natural dimming" with smooth, continuous and flicker-free dimming to dark (0.1%). Syncing for controls: 2mA max. THD: < 20%. Insignificant inrush current at 120 and 277VAC. FCC Class A and B tested for EMI and RFI When Control Input of 0-10V is specified driver will be set for linear dimming curve, if NLIGHT is specified driver will be set for logarithmic dimming curve.

nLight Air Wireless

The integrated API smart sensor is part of each luminaire in the nLight AIR network, which can be grouped to control multiple luminaires. The granularity of control with the digital PIR occupancy detection and daylight sensing makes a great solution for any application.

Optionally you can order nLight AIR less sensors for compatibility with an nLight AIR wireless system.

Controls and System Networking Options

For wired networking via Cat-5e, choose an integrated nLight® module. For daylight dimming and/or dual technology occupancy detection. See Integrated Sensor Layout Page for more details.

Electrical

LED light engine — consisting of modular LED boards and eldoLED® dimming driver — is rated for 60,000 hours (L80) at 25° C ambient temperature. Specify 120V or 277V. Pre-wired with 16AWG fixture wire. For special circuiting or wire gauge, consult factory. Plug-in electrical connectors included.

Environment

Suitable for damp location.

Validation

CSA/CUS listed. CSA tested to UL 1598 standards. LM-79 tested. Individual sections meet FCC Part 15 requirements.

Government Procurement

BAA – Buy America(n) Act: Product qualifies as a domestic end product under the Buy American Act as implemented in the FAR and DFARS. Product also qualifies as manufactured in the United States under DOT Buy America regulations.

BABA – Build America Buy America: Product qualifies as produced in the United States under the definitions of the Build America, Buy America Act.

Please refer to www.acuitybrands.com/buy-american for additional information.

Warranty

5-year limited warranty. This is the only warranty provided and no other statements in this specification sheet create any warranty of any kind. All other express and implied warranties are disclaimed. Complete warranty terms located at:

www.acuitybrands.com/support/warranty/terms-and-conditions

Note: Actual performance may differ as a result of end-user environment and application.

All values are design or typical values, measured under laboratory conditions at 25 °C. Specifications subject to change without notice.