

# PLANAR

INDIRECT/DIRECT WALL

## HIGHLIGHTS

- Total System Integration features 5-year limited warranty by Acuity Brands covering all components and construction
- 4' and 8' sections
- Up to 112 lumens per watt
- Two lumen packages
- Enhanced asymmetric distribution through optical film
- Flicker-free dimming to dark (0.1%) powered by eldoLED® driver
- Sculptured or flat end caps
- White, black or silver in semi-gloss finish. RAL color options also available.

## FIXTURE PERFORMANCE

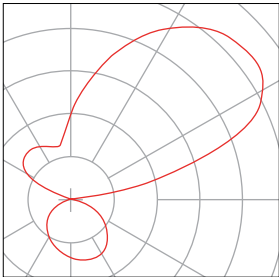
Nominal Lumens/Foot	ID400LMF	ID650LMF
Delivered Lumens/Foot	458	650
Input Watts/Foot	4.5	5.8
Lumens/Watt	102	112

\*Based on a 4ft 35K fixture



eldoLED

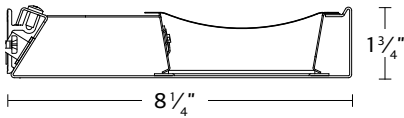
## DISTRIBUTION



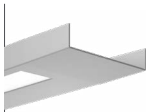
70% Up/30% Down

## DIMENSIONS

Section View



## DETAILS

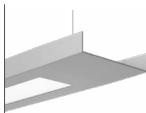


Sculptured end cap



Flat end cap

## COMPANION LUMINAIRE(S)



PLN8  
Planar Pendant

MARK  
ARCHITECTURAL  
LIGHTING™

Planar  
Indirect/Direct Wall

ORDERING

Example: PLW8 LLP 32FT MSL8 80CRI 30K ID650LMF SCT MIN1 MVOLT SLVT ZT

Series		Plan		Total Run Length		Max Section Length		Direct Light Source Color Rendering		Direct LED Color Temp		Indirect LED Light Output		Switching	
PLW8	Planar Wall	LLP	Linear longest possible	_FT	Specify continuous run length (in whole feet, 4' increments)	MSL4	4'	80CRI	80 CRI	30K	3000K	ID400LMF	400 Nominal Lumens Per Foot	SCT	Single Circuit
		LSL	Longest same length			MSL8	8'	90CRI	90 CRI	35K	3500K	ID650LMF	650 Nominal Lumens Per Foot		
										40K	4000K				
Minimum Dimming Level		Voltage		Finish		Emergency Option		Control Input		End Option		Options			
MINI	Constant current, dimming to 1%	MVOLT	Multi-volt, 120-277	WHSG	White, Semi-Gloss	(blank)	No Emergency option	ZT	0-10V control	SCEP	Sculptured End Cap	(blank)	No option		
DARK	Constant current, dimming to 0.1%	120	120V	BKSG	Black, Semi-Gloss	_EC*	# of back up circuits					DC	Clear dust cover		
		277	277V	SLVT	Silver (textured)	*4FT MSL4 individual fixture with EC, consult factory.				FLEP	Flat End Cap	CSA*	Manufactured to Canadian Standards		
				RALTBD	<a href="#">RAL paint finishes</a>										
														* When CSA with EC, entire section must be EC, i.e., MSL8 section would need 2EC.	

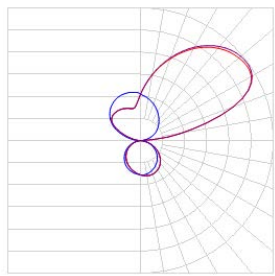
MARK

ARCHITECTURAL  
LIGHTING™

Planar

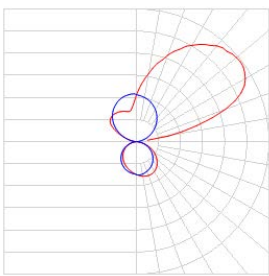
Indirect/Direct Wall

PHOTOMETRICS



(Lumens Per Zone)

IES LM79-08  
**PLW8 4FT 35K ID400LMF**  
Lumens: 1830  
Wattage: 16.5  
Efficacy: 110.90



(Lumens Per Zone)

IES LM79-08  
**PLW8 4FT 35K ID650LMF**  
Lumens: 2493  
Wattage: 23  
Efficacy: 108.39

EXPECTED LIFE: L80 @ 60,000 HOURS

LINEAR PLAN

Mark Lighting offers the ability to provide a continuous run plan to suit your requirements by optionally offering three different methods of configuration.

LLP- Linear Longest Possible

In this configuration, the longest length available is optimized, resulting in the fewest segments and mounting locations. Caution should be used where balanced appearance is a concern. Example: 20 FT run would have 2, 8 FT segments and 1, 4 FT segment at the end of the run.

LLP	8 FT	8 FT	4 FT
-----	------	------	------

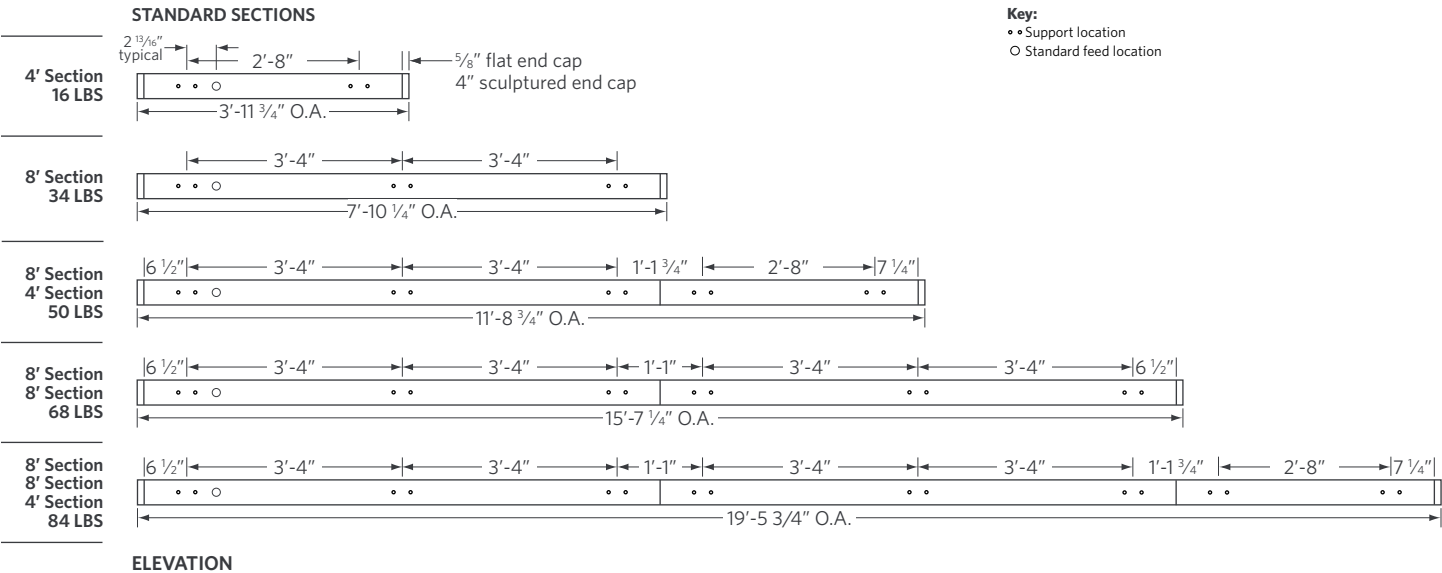
LSL- Linear Same Length:

In this configuration, each segment is the same length and is standardized based on the longest length available and is the only option provided. Because it is dependent on one segment length and there are mathematical limitations on what overall row lengths can be achieved. Example: 20 FT row would be achieved with 5, 4 FT long segments equaling 20 FT (nominal).

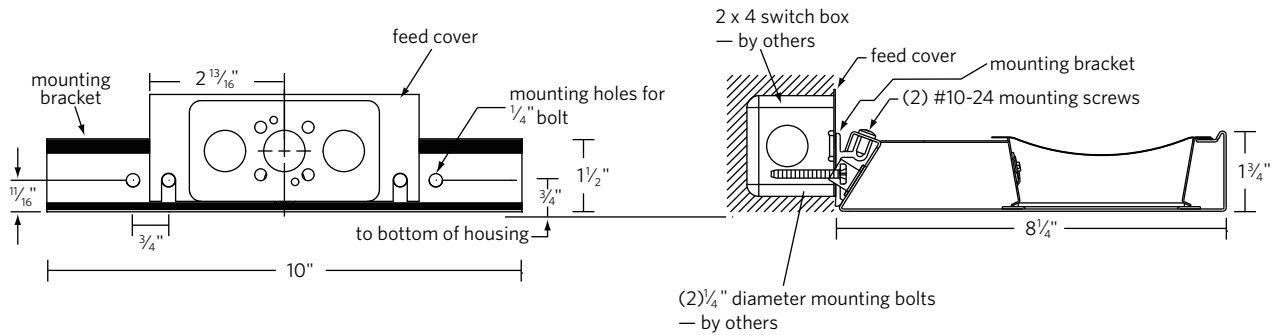
LSL	4 FT	4 FT	4 FT	4 FT	4 FT
-----	------	------	------	------	------

WEIGHTS & SUPPORT SPACING

Mounting spacing equals section length. Default location shown.



## MOUNTING DETAIL



## COMPATIBLE nLIGHT COMPONENTS WITH INTEGRATED CONTROLS



nPODM DX WH

nPODM 2P DX WH

nPODM 4P DX WH



nPODM 2L WH



nPOD GFX WH

## eldoLED COMPATIBILITY Additional control options with eldoLED 0-10V driver(s).

## SPECIFICATIONS

### Housing

Nominal 8 1/4" x 1 3/4" rectangular housing is formed from cold-rolled steel.

### End Caps

Die-cast end caps are mechanically attached with no exposed fasteners. Sculptured end caps are standard. For flat end caps, select the FLEP option.

### Finish

White, black or silver in semi-gloss with a fine textured finish. RAL color options also available.

### Luminaire Length

4' and 8' nominal lengths in a single section. For total luminaire length, add 5/8" for each flat end cap and 4" for each sculptured end cap. Using internal joiners, 4' and 8' sections can be joined to form longer rows.

### Source

Three LED lumen packages and three available color temperature options (3000K, 3500K and 4000K) - all within 2.5 MacAdam ellipses.

### Optics

Optical system consists of high performance lens, diffusers and metal reflectors.

### Dimming Driver

eldoLED® driver provides "natural dimming" with smooth, continuous and flicker-free dimming. Syncing for controls: 2mA max. THD: < 20%. Insignificant inrush current at 120 and 277VAC. FCC Class A and B tested for EMI and RFI. When Control Input of 0-10V is specified driver will be set for linear dimming curve.

### Electrical

LED light engine - consisting of modular LED boards and eldoLED® dimming driver - is rated for 60,000 hours (L80) at 25° C ambient temperature. Specify 120V or 277V. Pre-wired with 16AWG fixture wire. For special circuiting or wire gauge, consult factory. Plug-in electrical connectors included.

### Environment

Suitable for damp location.

### Validation

CSA/CUS listed. CSA tested to UL 1598 standards. LM-79 tested. Individual sections meet FCC Part 15 requirements.

### Government Procurement

BAA - Buy America(n) Act: Product qualifies as a domestic end product under the Buy American Act as implemented in the FAR and DFARS. Product also qualifies as manufactured in the United States under DOT Buy America regulations.

BABA - Build America Buy America: Product qualifies as produced in the United States under the definitions of the Build America, Buy America Act.

Please refer to [www.acuitybrands.com/buy-american](http://www.acuitybrands.com/buy-american) for additional information.

### Warranty

5-year limited warranty. Complete warranty terms located at [www.acuitybrands.com/support/customer-support/terms-and-conditions](http://www.acuitybrands.com/support/customer-support/terms-and-conditions)

**Note:** Actual performance may differ as a result of end-user environment and application.

All values are design or typical values, measured under laboratory conditions at 25°C. Specifications subject to change without notice.

### A+ Capable Luminaire

This item is an A+ capable luminaire, which has been designed and tested to provide consistent color appearance and out-of-the-box control compatibility with simple commissioning.

- All configurations of this luminaire meet the Acuity Brands' specification for chromatic consistency
- This luminaire is part of an A+ Certified solution for nLight® control networks when ordered with drivers marked by a shaded background\*
- This luminaire is part of an A+ Certified solution for nLight control networks, providing advanced control functionality at the luminaire level, when selection includes driver and control options marked by a shaded background\*

To learn more about A+, visit [www.acuitybrands.com/aplus](http://www.acuitybrands.com/aplus).