

EMS LED

Frequently Asked Questions



What different fixture sizes are available?

The EMS LED is available in 3 lengths, L24 (2'), L48 (4') and L96 (8').

What material is the diffuser made from?

Two material options are available for EMS LED: High impact-strength acrylic, which has impact resistance comparable to 100% DR. A vandal-resistant polycarbonate lens is also available. These material types carry an IK10 and IK9 rating and are injection molded rather than thermal molded, resulting in uniform thickness, improved strength, less breakage and consistent fit and finish.

Both materials are F1 outdoor rated and UV stabilized to keep from yellowing or becoming brittle over time.

Why choose one lens option over another?

For optimal lumen output, choose the deep clear lens. If your application requires glare control or the need to visibly block the LEDs from view, choose a frosted lens (shallow lineal ribbed or deep frosted).

What fastener options are available?

Captive polymeric (POM) latches ship standard. The captive, stay-in-place latches, simplify installs by keeping the latch in the upright position and out-of-the way during the installation. #316 stainless steel latches are also available for tougher applications or food processing areas. Both latch options can be ordered with optional Torx screws to resist tampering.

What material is the EMS LED housing enclosure made from?

The EMS is offered with a 5VA rated fiberglass housing. 5VA enclosures are tested to the toughest UL94 flammability standards. The 5VA rated enclosure allows the fixture to be used as a wire way.

What are typical uses and applications for the EMS LED?

The general purpose EMS LED is a feature-rich, wet location and vapor-tight fixture that suits many demanding environments requiring protection from moisture and dust. Typical applications include parking garages, industrial facilities, canopies, retail malls, multi-purpose centers, garden centers, and more.

Can I use this fixture in food preparation areas?

Yes, the fixture is rated at NSF splash zone 2. Optional stainless steel latches (STSL) are also available.

What components are field replaceable?

The EMS is designed for simple serviceability, if needed. The diffuser, light engine and drivers can be easily field replaced.

How easy is it to access the internal components?

Simply remove the diffuser by disengaging the latches and removing the four slotted hex screws securing the access cover.

What are the ways this fixture can be mounted?

The EMS LED can be ceiling or suspended mounted. Pre-punched stainless steel mounting brackets are included (two per luminaire) for easy field-attachment of bolts, screws and other mounting hardware. Angle, dual pendant, end mount and quick mount brackets are also available. When mounted outdoors, it does not require a covered ceiling to maintain wet location or IP ratings.

Are different distributions available?

Yes, medium (MD) and wide (WD) and (PGD) parking garage distributions are available.

What lumen packages are available?

EMS L24 (2ft) – 2000LM, 3000LM 4000LM 6000LM

EMS L48 (4ft) – 3000LM, 4000LM, 6000LM, 8000LM, 10000LM

EMS L96 (8ft) – 9000LM, 12000LM, 15000LM, 18000LM, 20000LM, 24000LM

Can I change/tune the lumen package in the field?

EMS LED can be ordered with the AO option (adjustable output) to tune the lumens down. The fixture is shipped with the lumens at 100% and the module contains 8 different interval settings that can be manually adjusted in the field.

Does EMS LED have any Ingress Protection (IP) listings?

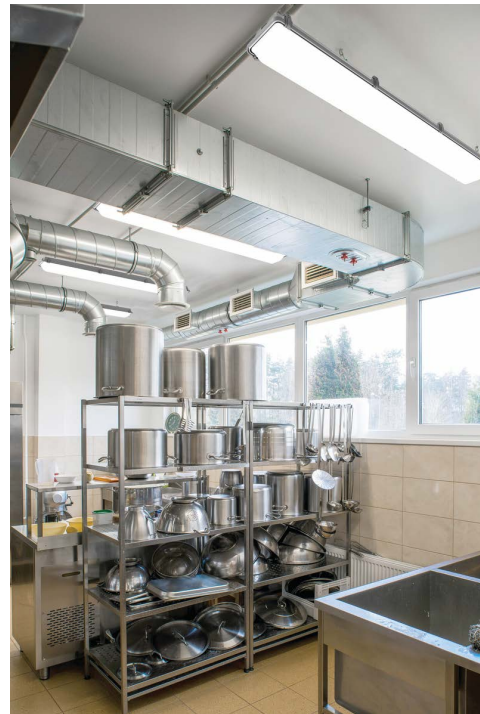
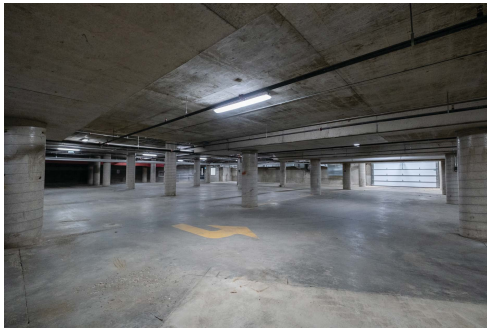
EMS LED fixtures are wet location, IP65, IP66, and IP67 rated providing excellent protection against moisture and dust to meet most demanding environments. It is also available with an IP69K option. Vent plugs will be included and stainless steel latches (STSL option) will be required.

What fittings are included?

Black end plugs are included. Wet location fittings are available as an option.

Is an emergency battery pack available?

Yes, 6W, 10W and 20W options are available – including STAR capability, as well as a generator transfer device.



Learn more about the EMS LED at www.holophane.com.