



ILB CP Lumen Reference Chart

Select the desired lumen output for your fixture's efficacy rating. The shown IOTA CP (Constant Power) unit will be the minimum wattage unit required. Only general efficacies and lumen values are shown. For specific lumen performance, multiply your fixture's efficacy by the wattage of the desired IOTA CP unit. Refer to product specification sheets for complete product details.



Desired Lumen Output - Constant from Minute 1 to Minute 90

		400	500	600	700	800	900	1000	1100	1200	1300	1400	1500	1600	1700	1800	1900	2000	2100	2200 to 3600*
Luminaire Efficacy (lm/w)	80	CP05	CP07	CP08	CP10	CP10	CP12	CP15	CP15	CP15	CP18	CP18	CP20	CP20	n/a	n/a	n/a	n/a	n/a	n/a
	90	CP05	CP07	CP07	CP08	CP10	CP10	CP12	CP15	CP15	CP15	CP18	CP18	CP18	CP20	CP20	n/a	n/a	n/a	n/a
	100	CP05	CP05	CP07	CP07	CP08	CP10	CP10	CP12	CP12	CP15	CP15	CP15	CP18	CP18	CP18	CP20	CP20	n/a	n/a
	110	CP05	CP05	CP05	CP07	CP08	CP10	CP10	CP10	CP12	CP12	CP15	CP15	CP15	CP18	CP18	CP18	CP20	CP20	CP20
	120	CP05	CP05	CP05	CP07	CP07	CP08	CP10	CP10	CP10	CP12	CP12	CP15	CP15	CP15	CP15	CP18	CP18	CP18	CP20
	130	CP05	CP05	CP05	CP07	CP07	CP07	CP08	CP10	CP10	CP10	CP12	CP12	CP15	CP15	CP15	CP15	CP18	CP18	CP18
	140	CP05	CP05	CP05	CP05	CP07	CP07	CP08	CP08	CP10	CP10	CP10	CP12	CP12	CP15	CP15	CP15	CP15	CP15	CP18
	150	CP05	CP05	CP05	CP05	CP07	CP07	CP07	CP08	CP08	CP10	CP10	CP10	CP12	CP12	CP12	CP15	CP15	CP15	CP15
	160	CP05	CP05	CP05	CP05	CP05	CP07	CP07	CP07	CP08	CP10	CP10	CP10	CP10	CP12	CP12	CP12	CP15	CP15	CP15
	170	CP05	CP05	CP05	CP05	CP05	CP07	CP07	CP07	CP08	CP08	CP10	CP10	CP10	CP10	CP12	CP12	CP12	CP15	CP15
	180	CP05	CP05	CP05	CP05	CP05	CP05	CP07	CP07	CP07	CP08	CP08	CP10	CP10	CP10	CP10	CP12	CP12	CP12	CP15

CP05 (5 Watt)

Options include:

- Flex or No Flex Options
- Slim Profile Model
- High Efficiency models to meet CA T20 for small battery chargers

CP07 (7 Watt)

Options include:

- Flex or No Flex Options
- High Efficiency models to meet CA T20 for small battery chargers
- 2-hour runtime model

CP08 (8 Watt)

Options include:

- Slim Profile Only
- High Efficiency models to meet CA T20 for small battery chargers

CP10 (10 Watt)

Options include:

- Flex or No Flex Options
 - Low/Slim Profile Models
 - 347-480VAC input models
 - IP66 / NSF Models
 - High Efficiency models to meet CA T20 for small battery chargers
 - Self-Diagnostics
 - Open Board / External Battery Designs
- (UL Component Recognized)

CP12 (12 Watt)

Options include:

- Flex or No Flex Options
- Slim Profile Model
- 2-hour runtime model
- Cold Weather model

CP15 (15 Watt)

Options include:

- Flex or No Flex Options
- Slim Profile Model
- 347-480VAC input models
- IP66 / NSF Models
- High Efficiency meets CA T20 for small battery chargers (included)
- Self-Diagnostics (included)

CP18 (18 Watt)

- Cold Weather Only
- Available with Lead Acid or Lithium Battery (Lithium battery UL Component Recognized only)

CP20 (20 Watt)

Options include:

- Single or Dual Flex
- High Efficiency meets CA T20 for small battery chargers (included)
- Self-Diagnostics
- High-Voltage Output

Standard ILB CP Features

• Patented Constant Power Output

Provides the same wattage to the LED array for the entire emergency runtime - no need to oversize the unit to ensure lumen levels at the end of the 90 minute duration.

• UL Listed for Field Installation

UL Listed for United States and Canada for both field and factory installation.

• Auto-sense Class 2 Output

Auto-sensing output automatically adjusts forward voltage to operate LED arrays in Class 2 designs. On ILB CP20 High Voltage models, the operating voltage range is 50-250VDC.

• Five-Year Warranty

Durable and confident IOTA design is fully backed by our five-year warranty against manufacturer defects.

n/a = driver option not available for lumen levels at that efficacy rating. For full light output, use an IOTA IIS Micro or Mini Inverter.

*Options shown are for 2200 lumen levels. For lumen values above 2200, multiply fixture efficacy by 20 to determine output levels of CP20 models.



Constant Power Product Lines

IOTA offers a full selection of different constant power products in different product families. Each product family provides unique attributes to provide the emergency egress functionality for your lighting application.

ILB Series



The ILB Series is the fundamental emergency driver solution that features different levels of constant power performance using a robust nickel-cadmium battery design. Also includes ILBSL (slim-profile models.)

Models include:

- ILB CP05
- ILB CP07
- ILB CP10
- ILB CP12
- ILB CP20
- ILBSL CP05
- ILBSL CP08
- ILBSL CP10
- ILBSL CP12

ILBLP Series



ILBLP Series emergency drivers use advanced lithium battery designs for significant reductions in size and weight, and include other product advantages such as self-diagnostics and CA Title 20 compliance.

Models include:

- ILBLP CP10
- ILBLP CP15
- ILBLP CP20
- ILBLP CP30

ILBHI Series



ILBHI emergency drivers accommodate high-voltage input of 347 to 480VAC requirements for industrial and some Canada electrical requirements.

Models include:

- ILBHI CP10
- ILBHI CP12
- ILBHI CP20 HV
- ILBHI CP30 HV

ILB2H Series

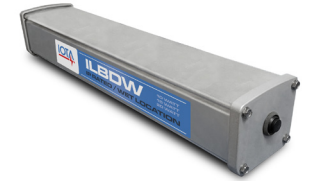


ILB2H Series emergency drivers deliver an extended emergency runtime of 2 hours to meet FEMA shelter, Canada egress, and select-local code requirements.

Models include:

- ILB2H CP12
- ILB2H CP20 HV

ILBDW Series



Featuring a specialized housing and conduit design, the ILBDW provides emergency lighting performance for damp, wet, and NSF applications.

Models include:

- ILBDW CP10
- ILBDW CP15
- ILBDW CP20 HV

Explore all of IOTA emergency drivers for field or factory installation at www.iotaengineering.com/products/emergency-led-drivers