



PHV Linear High Bay Launch Deck

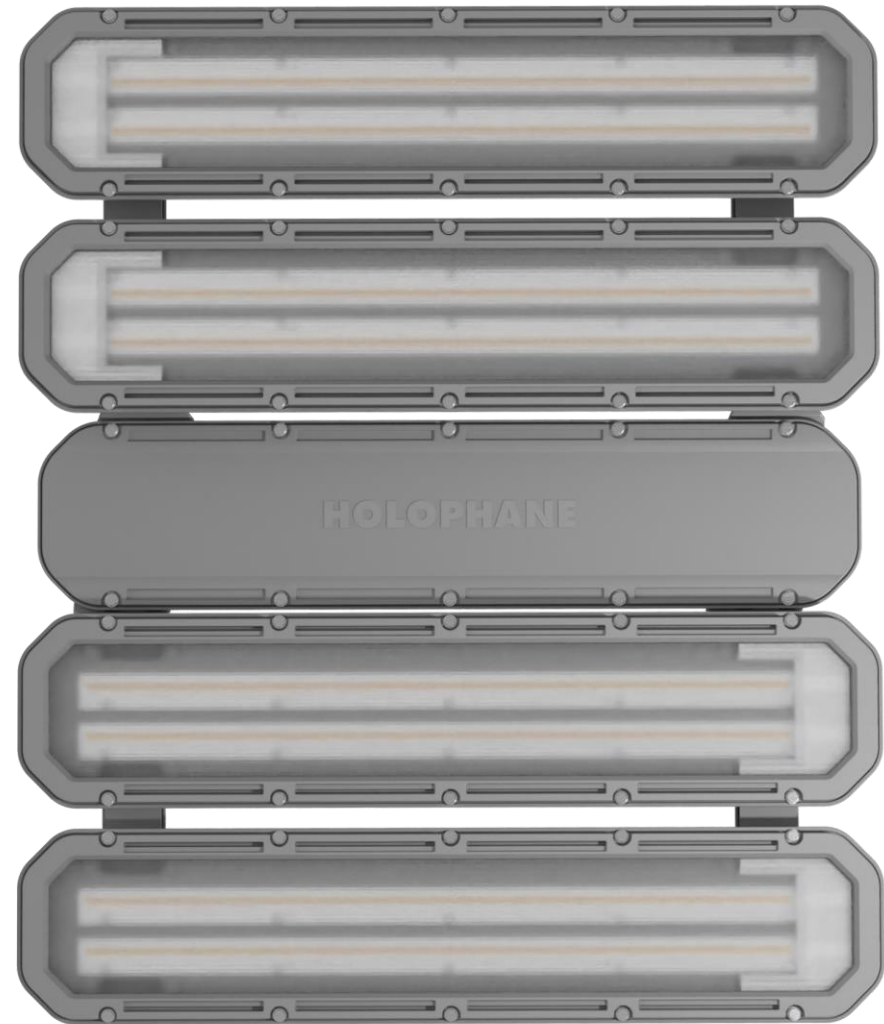
Eric Rodriguez - Product Marketing Manager

Confidentiality Statement

The information in this presentation is confidential and proprietary, and may not be used, reproduced or distributed without the express written permission of *Acuity Brands Lighting, Inc.*

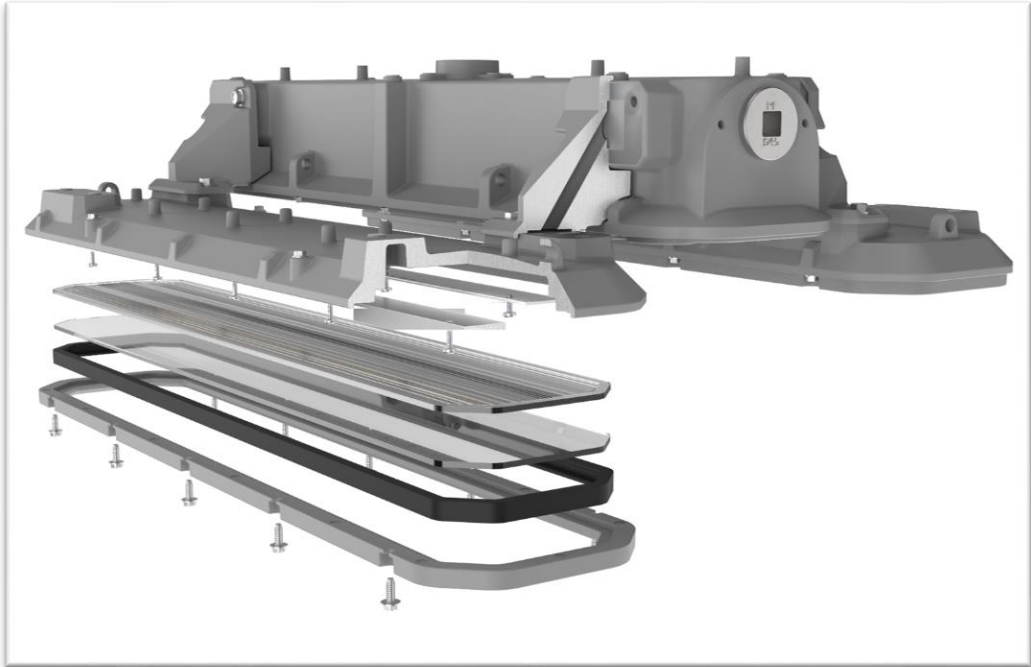
What is PHV

- The latest innovation to the industry-leading *PHUZION* family by Holophane
- Everything that makes *PHUZION* great, now in linear form!
- **Tiltable, not typical**
 - *Ultra customizable for in-field optical adjustability*
- 60,000 lumens of linear high-bay performance





Overview & Breakdown



PHV Breakdown	
Lumen Range	12000 – 60000LM
Color Temp	30, 35, 40, 50K
CCT	80, 90 CRI
Lens	Glass, Acrylic
Optics	Medium, Wide, Narrow
Ambient Rating	55-65C
IP Ratings	IP65,66 NEMA4X
Surge Rating	10kV
Colors	White, Graphite, Nickle, Gray, Matte Black, Gloss Black, Anti-microbial White
Controls	nLight Air, X-Point

Classifications & Ratings



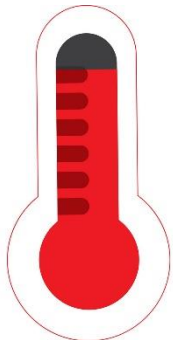
CSA Listed to UL 1598

Wet Location Listed



NSF2 Splash Zone

IP65, 66, NEMA4X



CSA Ambient Rated up to 65°C

DLC Premium, Standard



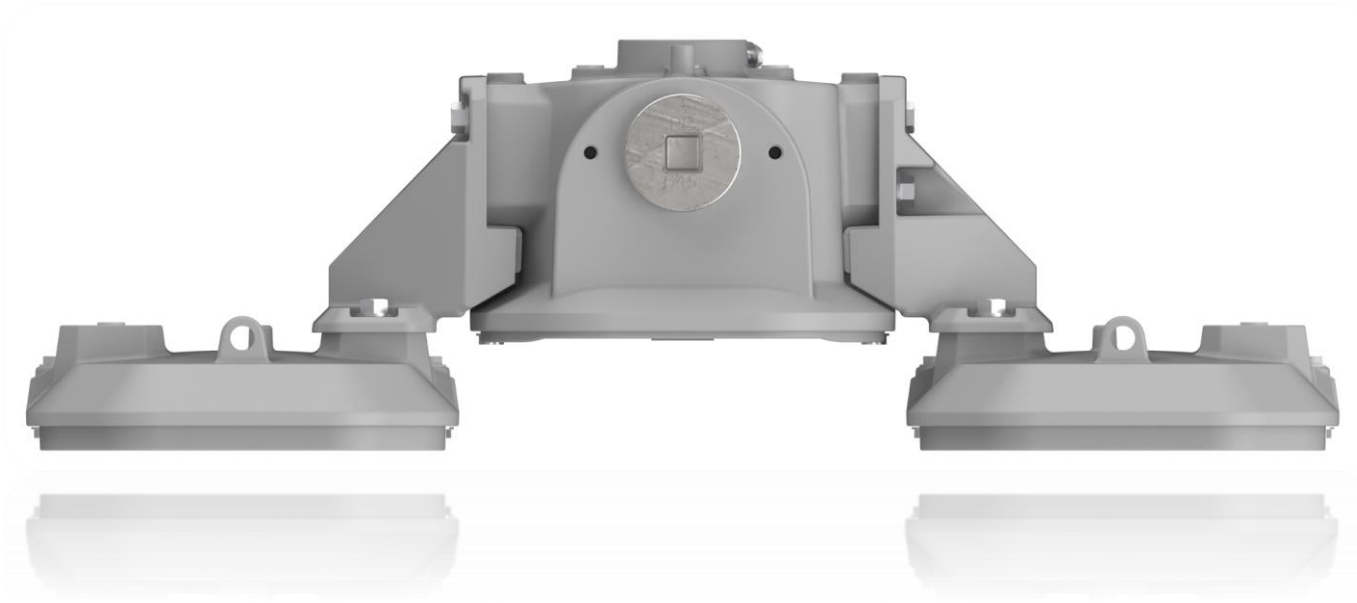
IEC60598 Section 9.2 – Luminaire IP Rating System

First Digit – Degree of Protection Against Solid Objects		Second Digit – Degree of Protection Against Water	
0	Non-protected	0	Non-protected
1	Protected against a solid object greater than 50mm such as hand	1	Protected against water dripping vertically
2	Protected against a solid object greater than 12mm such as finger	2	Protected against dripping water when incident up to 150 from vertical
3	Protected against a solid object greater than 2.5mm such as wire or a tool	3	Protected against water spraying at an angle of up to 60°
4	Protected against a solid object greater than 1.0mm such as wire or thin strip	4	Protected against water splashing from any direction
5	Dust-protected. Prevents ingress of dust sufficient to cause harm	5	Protected against jets of water from any direction <i>(i.e. sink faucet w/ ¼" nozzle; 4 psi & 3.3 gal/min at 3 yards distance)</i>
6	Dust-tight. No dust ingress.	6	Protected against heavy seas or powerful jets in harmful quantities <i>(i.e. 2.5" hose flow w/ ½ nozzle; 14.5psi, 26 gal/min at 3 yards distance)</i>
		7	Protected against harmful ingress of water when immersed between a depth of 150mm and 1 meter for 30 minutes maximum.
		8	Protected against submersion. Suitable for continuous immersion in water.
		9K	Protected against close-range high pressure, high temperature spray downs. <i>(i.e. High Temp Pressure washer & low flow; 80°C at 1450psi & 3.5 gal/min at 1/2ft distance) *IEC 60529 and ISO 20653</i>

NSF Food Processing Equipment Certification Chart

NSF Certification	Location Descriptions (Use & Commentary)	Typical Lighting Applications
Non-Food Zone	<ul style="list-style-type: none"> • Areas where direct contact with food products during normal operations would not be expected • Equipment is located outside the normal washdown area • There is a concern that the fixtures will add contamination to the protected space or food product (e.g. cleanability – will the finish withstand cleaning, chipping paint, deteriorating paints or finishes, lens impact resistance, lamp glass breakage, etc.) 	<ul style="list-style-type: none"> • Kitchens • Food Storage • Dry Process Areas • Damp Process Areas – no drip possibility
Splash Zone	<ul style="list-style-type: none"> • Areas where direct contact with food products during normal operations would not be expected; however, the fixture may be situated such that liquids used in the processing or cleaning procedures, may splash, spill or otherwise soil – either intentionally or inadvertently – the surface of the fixture. There then is the potential for dripping or draining onto other surfaces or even the process. Since these fixtures are often used in washdown areas, Wet location listing is not sufficient. • Fixtures must be tested to withstand high pressure hose washdown • The concerns of Non-Food Zone also apply 	<ul style="list-style-type: none"> • Wet or damp process areas • High pressure purging and/or decontamination used in the process • Areas using hose washdown
Food Zone	<ul style="list-style-type: none"> • Areas where direct contact with food products is normally expected and surfaces from which the food may drip, drain, or splash back onto surfaces normally in contact with food • Equipment other than lighting fixtures typically require this certification (e.g. work tables, cutting boards, other direct contact equipment) 	<ul style="list-style-type: none"> • Category not typically used for lighting

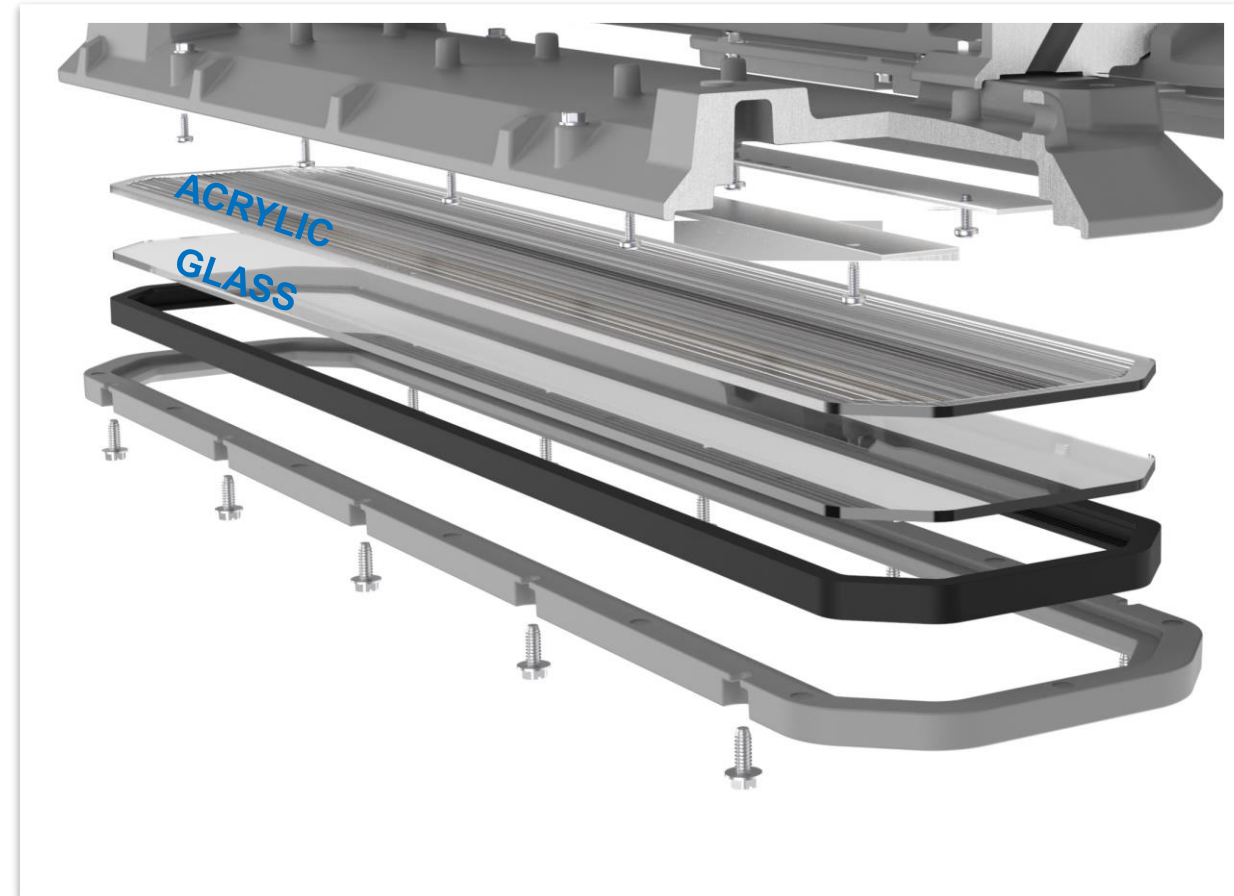
Design Features – Construction



- All A360 Aluminum Castings
 - Excellent thermal conductivity to keep the electronics cool for optimal performance and life!
- All Stainless-Steel Bolting Hardware
 - Added corrosion resistance and strength for the toughest environments
- All complex, molded Silicon and Non-silicon gasketing
 - Designed complexity to maximize intrusion resistance in all environments

Design Features - Optics

- Dual Layered Simulated Holophane Prismatic
 - *Single layer glass (clear or frosted) with prismatic molded acrylic overlay*
 - *All the benefits of Holophane prismatics in a linear, flat form factor!*
- Impact Modified Acrylic
 - Clear and Frosted
- Tempered Glass
 - Clear and Frosted



Design Features – ***Tilttable, not Typical***



WOW!

Tilttable outer optics give you up-to 40° of indexed rotation for in-field optical customization to best suit your space

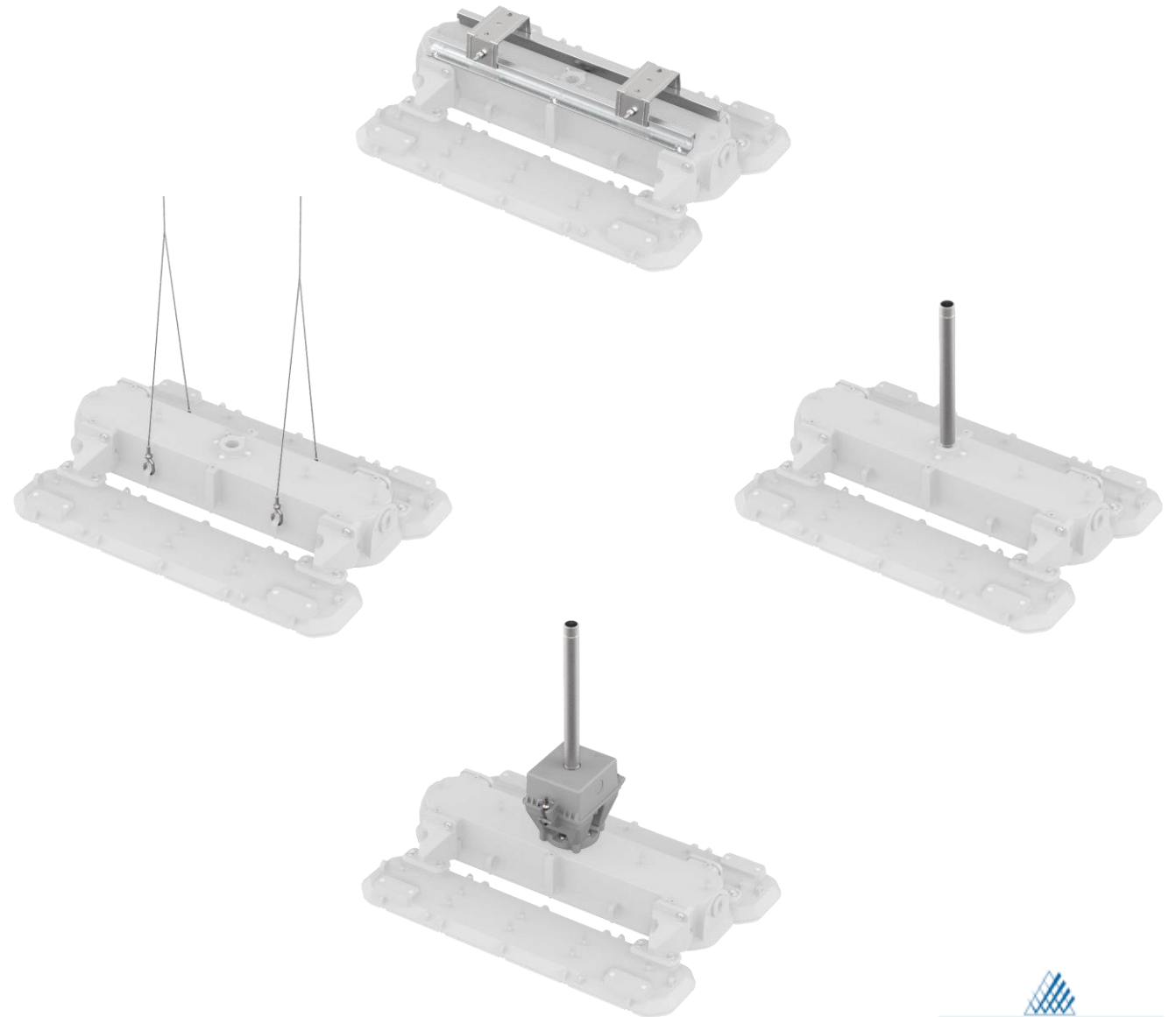
Customize your optical distribution in 10° increments providing maximum control in customizability

Design Features - Mounting

- Surface (*PHVSMB*)
 - 6063 Aluminum rails with 316SS Brackets

- Suspended
 - Four housing-cast hook points
 - Chain
 - Aircraft Cable (*IBACxxx*)
 - 3/4" NPT hub
 - Pendant Monopoint

- QDH
 - QD, NDT, QR, QN



Options – Integral Sensors & Controls



- rSBG
 - nLight Air 2.0, IP66 rated, NSF approved
- SBGR
 - Standalone & Bluetooth
- rMSOD
 - nLight Air 2.0, IP66 rated, NSF approved
- rIO
 - All the benefits of nLight AIR without sensing
- XPoint Wireless Dimming Module*
 - XAD and XAD924

Options - Other

Cords

- Standard Wet Location WIPs
 - 3C, 4C (battery), 5C (dimming)
- Twist Lock
 - Water-tite plugs & receptacles
- RELOC™
 - Dry Location Plug & Play plugs

Other

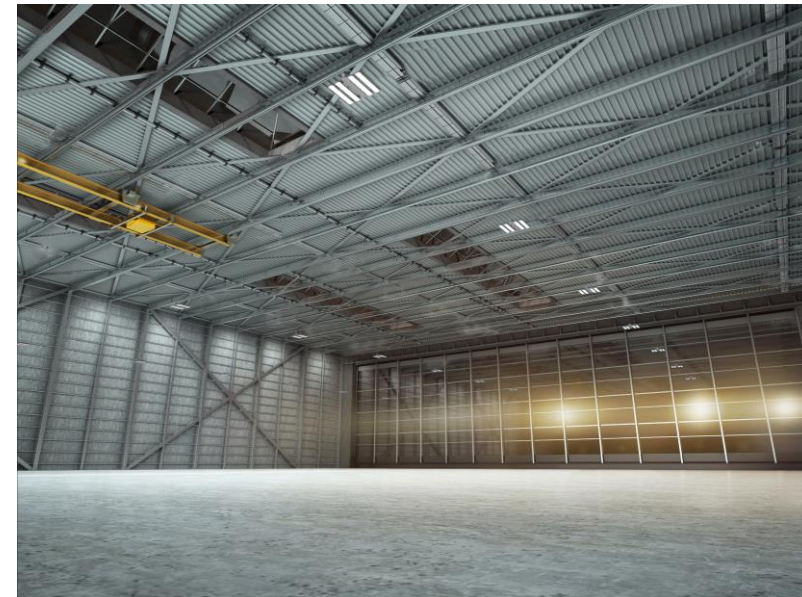
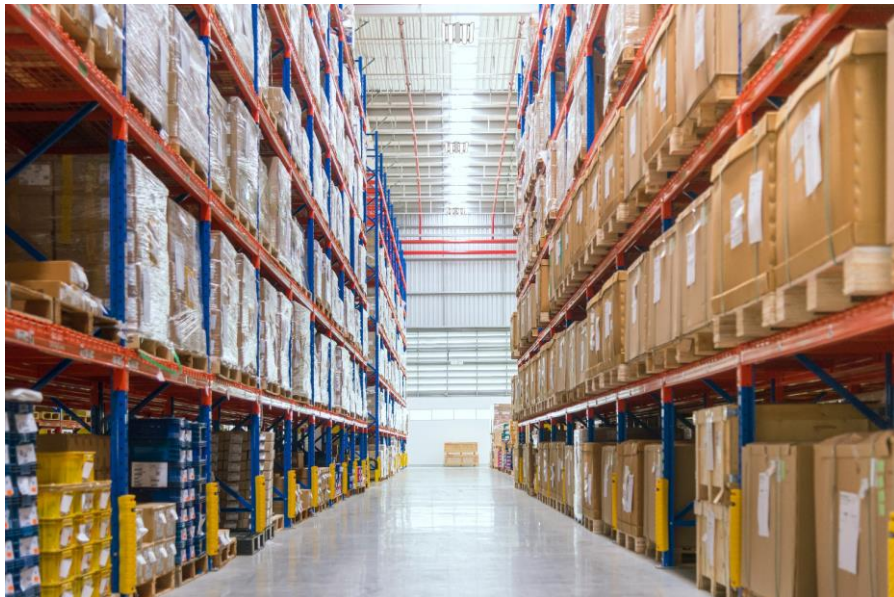
- 20kV SPD
- AO – adjustable output
- UPL – added uplight module
- WGX/WGXSS – wire guards

Emergency

- E15WMCP
 - MVOLT, 15W, Constant Power
- IE18WCPHECW
 - MVOLT, 18W, Constant Power, Cold Pack
- IE20WCPHER
 - HVOLT, 20W, Constant Power, Remote
- IE30WCPHER
 - HVOLT, 30W, Constant Power, Remote
- ETS
 - Generator Transfer Device

Application Possibilities

- Manufacturing Warehousing
- General Warehousing
- Food Processing Storage
- Assembly Plants/Manufacturing
- Retail
- Large Item Inspection Spaces
- Heavy Industrial
- Rack Storage
- Open Air Spaces
- Arena Lighting
- Wet Location Spaces
- Washdown Spaces



NSF Approved Configurations

Cords

- Standard Wet Location WIPs
 - 3C, 4C (battery), 5C (dimming)
- Twist Lock
 - Water-tite plugs & receptacles



Paint

- DWHXD, DBXD, DBLXD, DGXD, DNXD

Emergency

- E15WMCP
- IE18WCPHECW
- IE20WCPHER
- ETS

Controls

- SBGR, SBG, RSBG, RMSOD, RIO

Other

- AO, UPL, TILT, SPD, WGX/WGXSS