



FEM LED

Industrial Enclosed-and-Gasketed Linear Luminaire



FEM LED

Industrial Enclosed-and-Gasketed Linear Luminaire

When you need reliability, longevity and precision for nearly every application FEM has your back.



Key Specs

- Available in **2-foot (L24), 4-foot (L48), and 8-foot (L96) lengths**
- **2,000 - 24,000 Lumens** allowing for a wide range of potential applications
- **3000K, 3500K, 4000K & 5000K CCT 80 or 90 CRI**
- **Medium, Wide and Parking Garage Distributions**
- Available with **wireless networked embedded controls by nLight**, addressing requirements of Luminaire Level Lighting Controls (LLLC). A nLight AIR sensor is embedded within this luminaire.
- **Emergency Battery Backup** and generator transfer device

Listings

- **Up to 50°C listed standard** with full light output for max performance
- **Up to 174LPW** providing lasting light output
- **IP65, IP66, IP67, & option for IP69K NEMA 4X, 1500 PSI hose-down, NSF Splash Zone 2**
- The **Deep and Low-Profile Acrylic lens options are IK10 rated**, providing the highest level of resistance to physical impact



Construction

Specially constructed for wet, damp and cold storage locations and to withstand rugged environments.

① Captive Latches:

- Polymeric (Standard)
- Stainless Steel (Option)

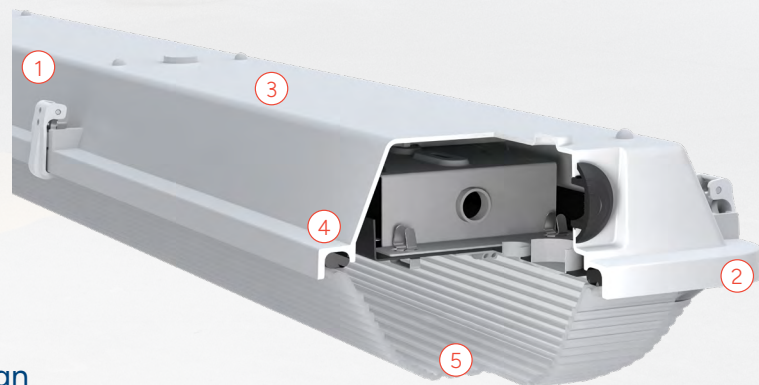
② Poured in placed, closed cell polyurethane gasket

③ Sturdy fiberglass housing

④ Tongue and groove seal design for optimal ingress protection

⑤ Lens Options for Every Environment and Layout

- Acrylic: Clear, Low Profile Clear, Low Profile Frosted, Deep Frosted, Ribbed Frosted Ribbed
- Polycarbonate: Low Profile Clear, Low Profile Frosted



More Mounting Options for additional installation versatility

- Stainless Steel V-Hook
- End Mount Suspension
- Rigid Mounting
- Chain, Double Chain
- Aircraft Cable)

Secure

No matter the project, big or small, easy or challenging, FEM fits the bill.

Solutions



Installing in a food-safe environment?

FEM LED's NSF rating and all rounded housing has you covered for bacterial growth resistance and easy cleaning



Expecting splashing, dripping, or even light hosedown from your installation environment?

FEM LED is IP65, IP65, IP67, & option for IP69K rated



Need to be able to quickly reconfigure the lights in the space but remain water tight

FEM LED has got you covered with water tight plugs



nLight® is your wired and wireless networked lighting controls platform, for indoor and outdoor applications

FEM LED has you covered and is available with wireless networked control options by nLight.

Applications

- Industrial Facilities
- Parking Garage
- Stairwells
- Retail Malls/Under Canopy
- Multi-Purpose Rooms
- Garden Centers
- Food & Beverage Processing
- Transit Stations
- Cold Storage
- And many more!



Controls

Maximize your energy savings by combining FEM with best-in-class controls.

nLight® Networked Lighting Controls

A Single Lighting Controls Platform for Indoor & Outdoor Spaces

nLight® is your wired and wireless networked lighting controls platform, for indoor and outdoor applications. Scaling from room to campus-wide applications, it is the one platform that grows with your business today and tomorrow; to seamlessly address energy cost optimization, building code compliance, improved occupant comfort, and much more.

- **SIMPLE:** One platform to specify, install, and manage. Designed for energy optimization and occupant comfort.
- **SCALABLE:** One platform suited for your needs today that grows with your business tomorrow. From room, floor to building or campus, indoors and outdoors.
- **CONNECTED:** One platform creating a digital network with unmatched flexibility. Wired and wireless field-installable and embedded lighting controls devices.





To learn more about FEM Industrial Linear LED Low Bay
visit www.LithoniaLighting.com



Join the conversation - follow us on social media.