

OVERVIEW

The WSRA Family of wall switch occupancy sensors provides simple and cost effective solutions for residential lighting control applications. All WSRA Family sensors have a stylish low profile appearance, soft-click buttons, and provide motion detection up to 36 ft, making it perfect addition for any room in the home including closets. Additionally, all WSRA Family sensors have a patent pending wiring method that enables them to function either with or without a neutral connection.

WSRA units come pre-configured for wiring without a neutral, however if connection to neutral is required by code, contractors can convert the unit in seconds.

FEATURES

- Compatible w/LEDs, electronic & magnetic ballasts, CFLs, & incandescents
- 100% passive detection, no potential for interference with other building systems
- Motion detection up to 36ft
- Push-button programmable without removing cover plate - adjustable time delays & operating modes
- Self-grounding mounting strap
- Device accommodates powering over ground or neutral connection (patent pending)
- Ultra-low current leakage (<0.5 mA) when connected via ground
- Fully meets NEC 2017 Section 404.2C neutral requirements - no current leakage to ground when connected to neutral
- Line power and load wires are interchangeable - impossible to wire backwards (patented)
- Integrated Photocell (disabled by default) prevents light from turning on if sufficient daylight is present
- Vandal resistant lens

Warranty

Five-year limited warranty. This is the only warranty provided and no other statements in this specification sheet create any warranty of any kind. All other express and implied warranties are disclaimed. Complete warranty terms located at: www.acuitybrands.com/support/warranty/terms-and-conditions

Note: Actual performance may differ as a result of end-user environment and application. Specifications subject to change without notice.



WSRA Series
Residential Wall Switch Sensor



**WSRA
On/Off
Single Relay**



**WSRA 2P FAN
Dual Relay**

ORDERING INFORMATION

WSRA		Example: WSRA 2P FAN WH		
Series Option	Poles	Operating Mode ¹	Voltage	Color
WSRA Residential Wall Switch Sensor (Occupancy and Daylighting)	[blank] Single Pole 2P FAN 2nd Pole Fan Operation	[blank] Automatic On SA Manual On VA Vacancy	[blank] 120 VAC	WH White IV Ivory

Notes:

- 1 Operating Modes re-programmable via push-button except for VA version.
- 2 Matching wall plate provided.

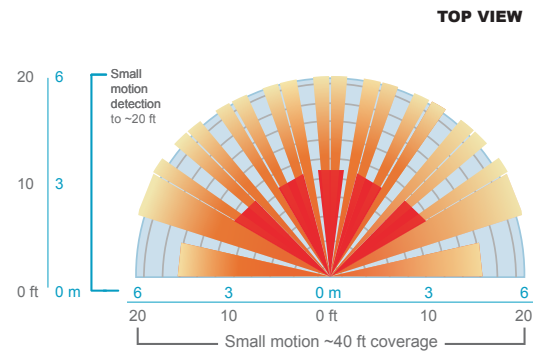
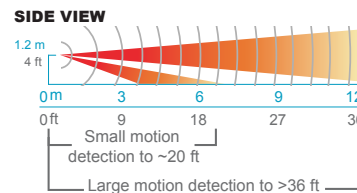


SPECIFICATIONS

Electrical	Input Ratings	120 VAC, 50/60 Hz
	Output Ratings	120VAC, 300W, 2.5A - Tungsten, Standard Ballast, Electronic Ballast 1/6 HP motor load.
	Relay Type	Latching
	Standards/ Ratings	Energy Management Equipment, UL916 (E167435)
Mechanical	Dimensions	2.74"H x 1.68"W x 1.63"D (70mm x 43mm x 41mm) - does not include ground strap
	Mounting	Single-Gang Box
	Connection Type	Low-Voltage Leads, Line-Voltage Leads
Environmental	Warrantied Operating Temperature	32°F to 140°F (0°C to 60°C)
	Relative Humidity	Up to 90%, Non-Condensing
	Standards/ Ratings	RoHS

COVERAGE PATTERNS

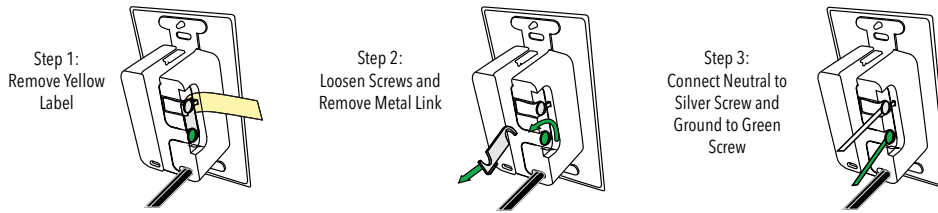
- Small motion (e.g. hand movements) detection up to 20 ft (6.10 m), ~625 ft²
- Large motion (e.g. walking) detection greater than 36 ft (10.97 m), ~2025 ft²
- Wall-to-wall PIR coverage
- Tested to NEMA WD 7-2011



WIRING

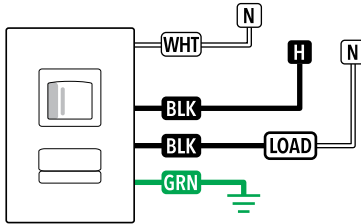
CONVERSION FROM GROUND ONLY (NO NEUTRAL) TO NEUTRAL WIRING

This product is pre-configured for wiring without a neutral; however, if connection to neutral is required by code, the unit easily converts in seconds.



CONVERTIBLE NEUTRAL

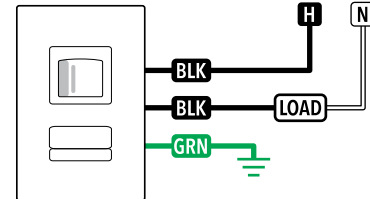
SINGLE RELAY, 120 VAC



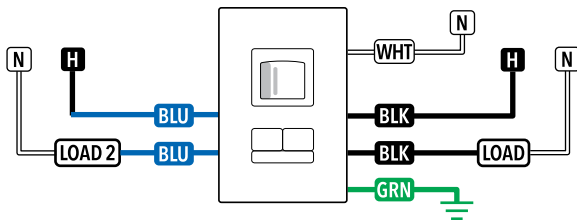
WIRE COLOR KEY	
120 VAC WIRING	
BLK	- Line Input
BLK	- Line Output
WHT	- Neutral
GRN	- Ground
DUAL RELAY WIRES	
BLU	- Line 2 Input
BLU	- Line 2 Output

GROUND ONLY

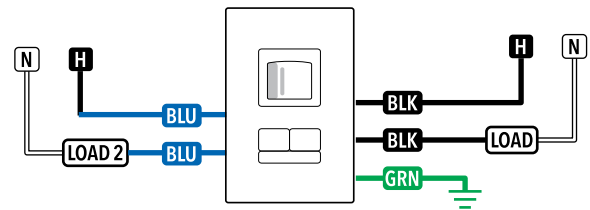
SINGLE RELAY, 120 VAC



DUAL RELAY, 120 VAC



DUAL RELAY, 120 VAC



Warning

For dual relay, both relays must be fed from the same circuit.