

SNAP DMX RELAY 0-10V LIGHTING CONTROL PANEL



Model shown: PWRLY R8
(PWRLY R16 fits in same size enclosure)

WARRANTY

3-year limited warranty. This is the only warranty provided and no other statements in this specification sheet create any warranty of any kind. All other express and implied warranties are disclaimed. Complete warranty terms located at:
www.acuitybrands.com/support/warranty/terms-and-conditions

NOTE

Actual performance may differ as a result of end-user environment and application. Specifications subject to change without notice.



OVERVIEW

Pathway SNAP Relay Lighting Control Panels provide unified DMX512 control of 0-10VDC outputs and relay switching in a single enclosure.

Intended for use with LED drivers requiring mains switching and 0-10V dimming, and for electronic fluorescent ballasts.

Each SNAP Panel consists of 8 or 16 DMX-controlled relays and a 16-way 0-10VDC control interface. Each relay and each analog output can be patched to any DMX address, allowing you to control the outputs and relays interdependently or paired up.

FEATURES

- DMX512 control of 8 or 16 normally-closed (NC) single-pole latching relays and 16 analog 0-10VDC outputs
- DMX512 start address configurable from front panel or remotely using RDM
- Each output may be assigned a non-sequential DMX address
- Analog output may be paired with relays for unified single DMX slot control, or control of relays and analog output may be split by assigning different DMX addresses to each
- Outputs may be patched to Auxiliary Input dry contact inputs
- User-configurable relay trigger threshold
- Indicator LEDs for Power, Processor, DMX Input, Relay state
- Test features include on-board relay test and review of incoming DMX levels on a slot-by-slot basis
- DMX line termination switch
- One DMX Input, and one DMX Thru connection
- UL 924 panel listing for Switching Emergency Circuits

ORDERING INFORMATION

PWRLY		EXAMPLE: PWRLY R16	
Series		Relay Quantity	
PWRLY	Pathway SNAP DMX Relay	R8	8-Relays
		R16	16-Relays

Accessories	
PWACC R1NC	Pathway Accessory, 1 Relay NC Latching

SPECIFICATIONS

Electrical	Input Ratings	120/277VAC transformer line voltage input
	Output Ratings	100mA per channel, sinking control 10mA per channel, sourcing
	Relay Ratings	Normally-closed (NC) Single Pole Relays 30A @ 277VAC Ballast 20A @ 120VAC Tungsten 20A @ 347VAC Ballast SCCR 18kA @ 277VAC Rated for 250,000 actuations
	Regulatory Compliance	cULus, UL916, UL924 listed (for emergency circuit use) Mixed voltages allowed in cabinet in accordance with NEC and local code requirements
Mechanical	Dimensions	12.0" W x 18.0" H x 6.0" D (305mm W x 457mm H x 152mm D)
	Weight	27.0 lbs (12.25 kg)
Environmental	Operating Temperature	14°F to 113°F (-10°C to 45°C)
	Relative Humidity	5-95%, non-condensing
General	Compliance	ANSI E1.11 DMX512-A R2013 ANSI E1.20 RDM - Remote Device Management ANSI E1.3 0-10V Analog Control ANSI C82.11 Fluorescent Ballast Control
	Government Procurement	<p>BAA Buy America(n) Act: Product qualifies as a domestic end product under the Buy American Act as implemented in the FAR and DFARS. Product also qualifies as manufactured in the United States under DOT Buy America regulations.</p> <p>BABA Build America Buy America: Product qualifies as produced in the United States under the definitions of the Build America, Buy America Act.</p> <p>Please refer to www.acuitybrands.com/buy-american for additional information.</p>

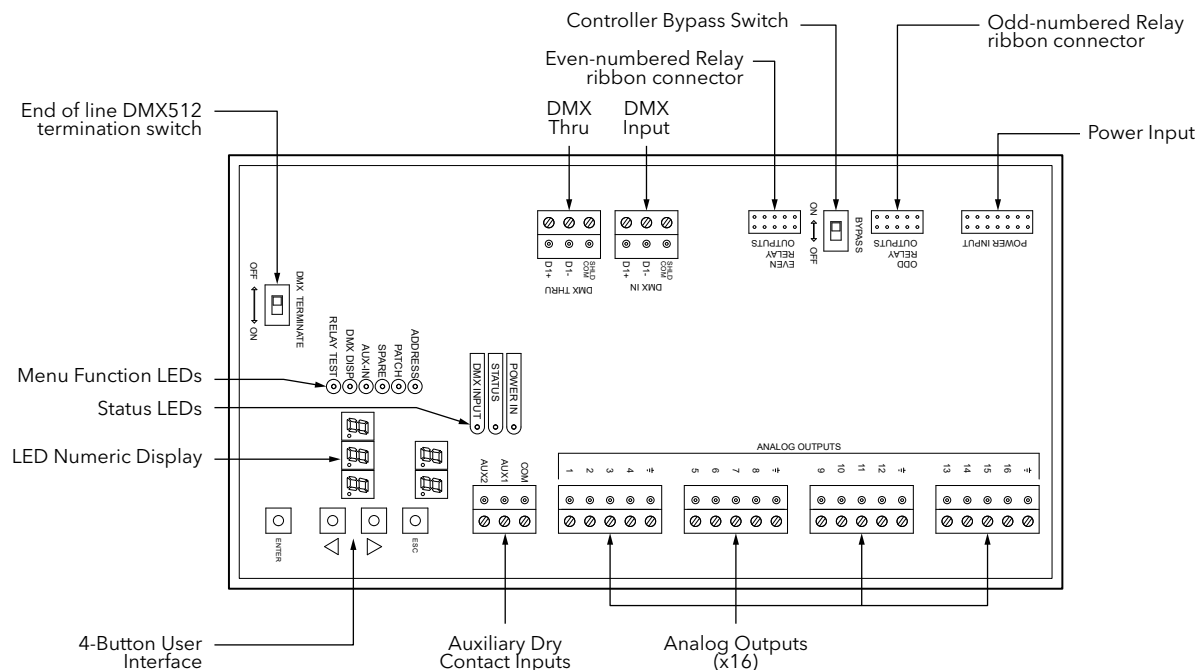
PART NUMBER CROSS-REFERENCE

PREVIOUS		NEW
Part Number	Catalog Number	Description
4850-8	PWRLY R8	Relay Lighting Control Panel with 0-10v, 8-Relays
4850-16	PWRLY R16	Relay Lighting Control Panel with 0-10v, 16-Relays

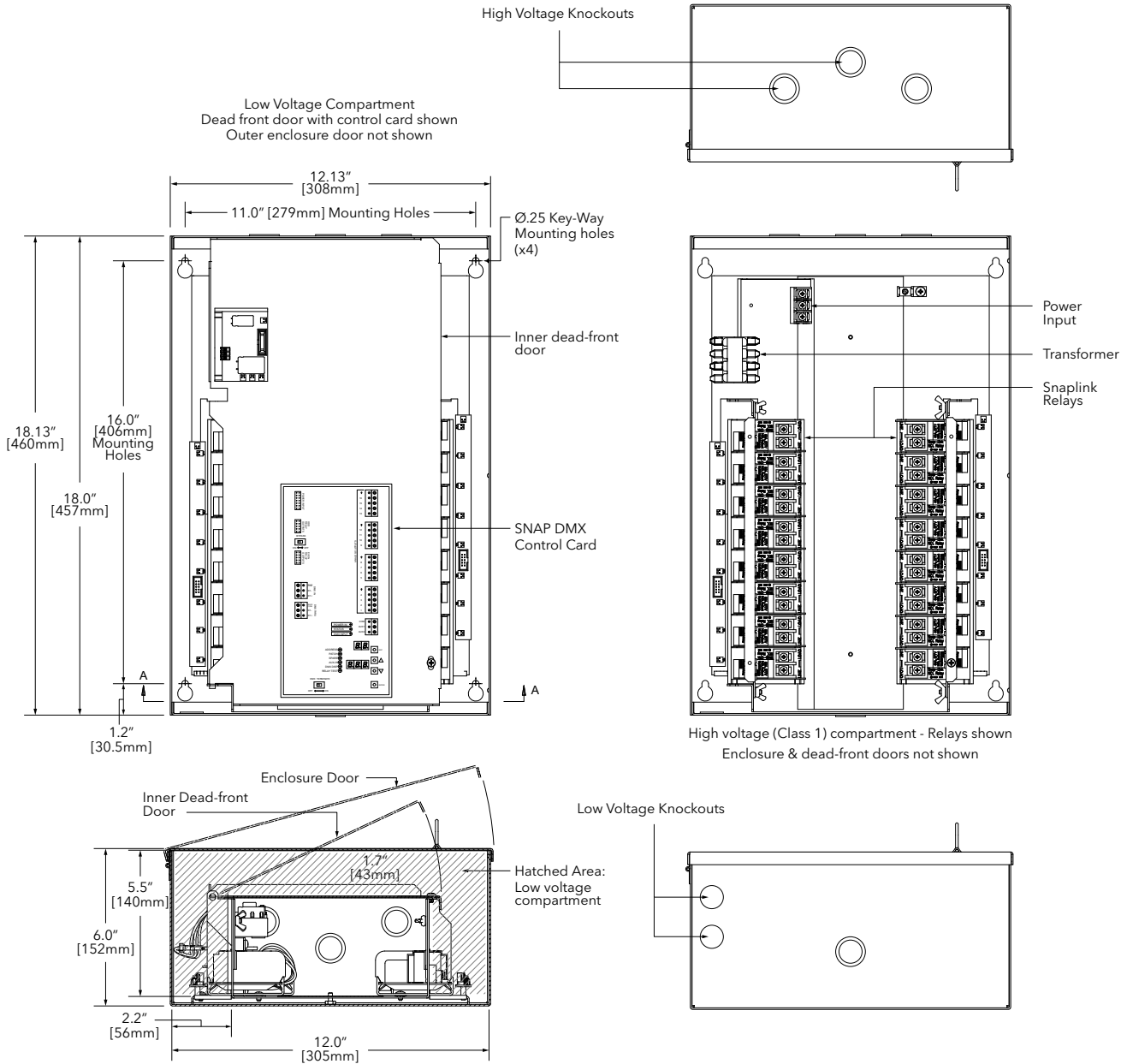
WIRING

DMX512 / RDM PINOUT		
Purpose	XLR / Terminal Block Pin #	RJ45 PIN # and Wire Color
Shield / Common	1	7 - White / Brown
Data - (complement)	2	2 - Orange
Data + (true)	3	1 - White / Orange
Not Used	4	6 - Green
Not Used	5	3 - White / Green
Not Used - Do Not Connect	N/A	4 - Blue
Not Used - Do Not Connect	N/A	5 - White / Blue
Not Used - Do Not Connect	N/A	8 - Brown

SNAP DMX CONTROLLER CARD



DIMENSIONS



APPLICATION RISER

