

VIGNETTE 485 WALL STATION INSERTS



Models shown: 1. PWFP G4 WH
2. PWWSI VPOE B4 WH
3. PWWSI LOC S3 WH
4. PWWSI LOC S3 WH
5. PWWSI LOC S1 WH

WARRANTY

3-year limited warranty. Complete warranty terms located at:
<https://www.acuitybrands.com/support/warranty>

NOTE

Actual performance may differ as a result of end-user environment and application. Specifications subject to change without notice.



ORDERING INFORMATION

INDIVIDUAL WALL STATION INSERTS - PWWSI						EXAMPLE: PWWSI V485 S3 WH	
Series		Network		Control Type		Finish	
PWWSI	Pathway Wall Station Inserts	V485 ¹	Vignette 485 Master Insert	B2	2 Buttons	BL	Matte Black
				B4	4 Buttons	WH	White
				S1	Single Slider		
				S2	Dual Sliders		
				S3	Triple Sliders		

WALL STATION KITS - PWWSK					EXAMPLE: PWWSK V485 G3 1B4 2S3 3S1 WH					
Series	Network	Size	Wall Station 1	Wall Station 2 ⁴	Wall Station 3 ⁴	Wall Station 4 ⁴	Wall Station 5 ⁴	Wall Station 6 ⁴	Finish	
PWWSK ^{2,3} Pathway Wall Station Kit	V485 Vignette 485	G1 1-Gang	1B2 2 Buttons	2B2	3B2	4B2	5B2	6B2	BL	Matte Black
		G2 2-Gang	1B4 4 Buttons	2B4	3B4	4B4	5B4	6B4	WH	White
		G3 3-Gang	1S1 Single Slider	2S1	3S1	4S1	5S1	6S1		
		G4 4-Gang	1S2 Dual Sliders	2S2	3S2	4S2	5S2	6S2		
		G5 5-Gang	1S3 Triple Sliders	2S3	3S3	4S3	5S3	6S3		
		G6 6-Gang								

Notes

- Each Wall Station requires only one 485 Master Insert. Remaining Inserts are LOC.
- PWWSK includes PWFP faceplate in the Size and Finish specified.
- PWWSK simplifies ordering of full wall stations, however will ship as individual items. Kits are not pre-assembled. If ordering using PWWSK, the kit will be broken out into individual lines referencing PWWSI and PWFP items on Sales Order Acknowledgement.
- Specify only the same number of Wallstations as selected Gangs (Size).

OVERVIEW

Vignette™ is a system of modular button and slider wall station inserts that allow you to snapshot four Universes of E1.31 sACN or one Universe of DMX512 from any control source, and then play back those static looks without further need for any lighting controllers or equipment.

Design the exact configuration needed for each wall station, from 1-gang to 6-gang. Each wall station needs only one "Master" Insert (PWWSI VPOE), which receives data and power; the remaining "Local" inserts (PWWSI LOC) connect together easily and can be re-arranged as needed.

Buttons can be Press-and-Hold to Record, and Press to Play Back; Sliders can act as a Grand Master for the Vignette's output or proportionately control user-defined Zones with minimum and maximum values for individual channels.

Vignette is ideal for applications such as hotels, restaurants, bars and nightclubs, retail, and others where dynamic looks are not needed.

485 models provide an easy way to retrofit venues using older, multi-drop wiring. A Vignette 485 system requires the use of an Vignette Architectural Gateway (PWGW DIN V), that includes an Ethernet port for configuration and communication with the controller.

Please note that we cannot provide engraving services.

FEATURES

- Configuration using free downloadable Pathscape software
- Buttons can be configured to act as Snapshot Replay, Non-Dim Zone On/Off, sACN Priority Override, Blackout, Grand Master, Record Enable and Take Control
- Sliders can be configured to act as Zone Control, Snapshot Master or Grand Master
- Inserts available in 2 and 4-button, and 1, 2, and 3-slider
- 485 backbone makes retrofits simple and straightforward
- Vignette Architectural Gateways can support up to 64 stations divided among 4 separate multi-drop buses
- Attractive design available in Matte Black or White finish
- Compatible with Pathway Faceplates (PWFP)
- Local inserts' positions are swappable; Master Insert must be in the left-most position
- Compression-screw and insulation-displacement contact (IDC) connectors included
- Also available in PoE wiring option (PWWSI VPOE)

SPECIFICATIONS

Electrical

Input Ratings	24VDC over CAT5 or 3-Pair Cable (485) 7.5W maximum power consumption, per station
Cabling	Standard CAT5/5e/6 Cable, 492 ft (150 m) maximum, or Retrofit onto existing 3-pair Belden 9773 or equivalent, 984 ft (300m) maximum
Regulatory Compliance	CE

Mechanical

Dimensions	1.72" W x 4.2" H x 1.7" D (44mm W x 107mm H x 43mm D) [per insert]
Weight	0.2375 lbs (0.1 kg) [per insert]

Environmental

Operating Temperature	14°F to 122°F (-10°C to 50°C)
Relative Humidity	5-95%, non-condensing
Standard Compliance	RoHS 2011/65/EU + A1 2015/863

Government Procurement

BAA	Buy America(n) Act: Product qualifies as a domestic end product under the Buy American Act as implemented in the FAR and DFARS. Product also qualifies as manufactured in the United States under DOT Buy America regulations.
BABA	Build America Buy America: Product qualifies as produced in the United States under the definitions of the Build America, Buy America Act.
	Please refer to www.acuitybrands.com/buy-american for additional information.

PART NUMBER CROSS-REFERENCE

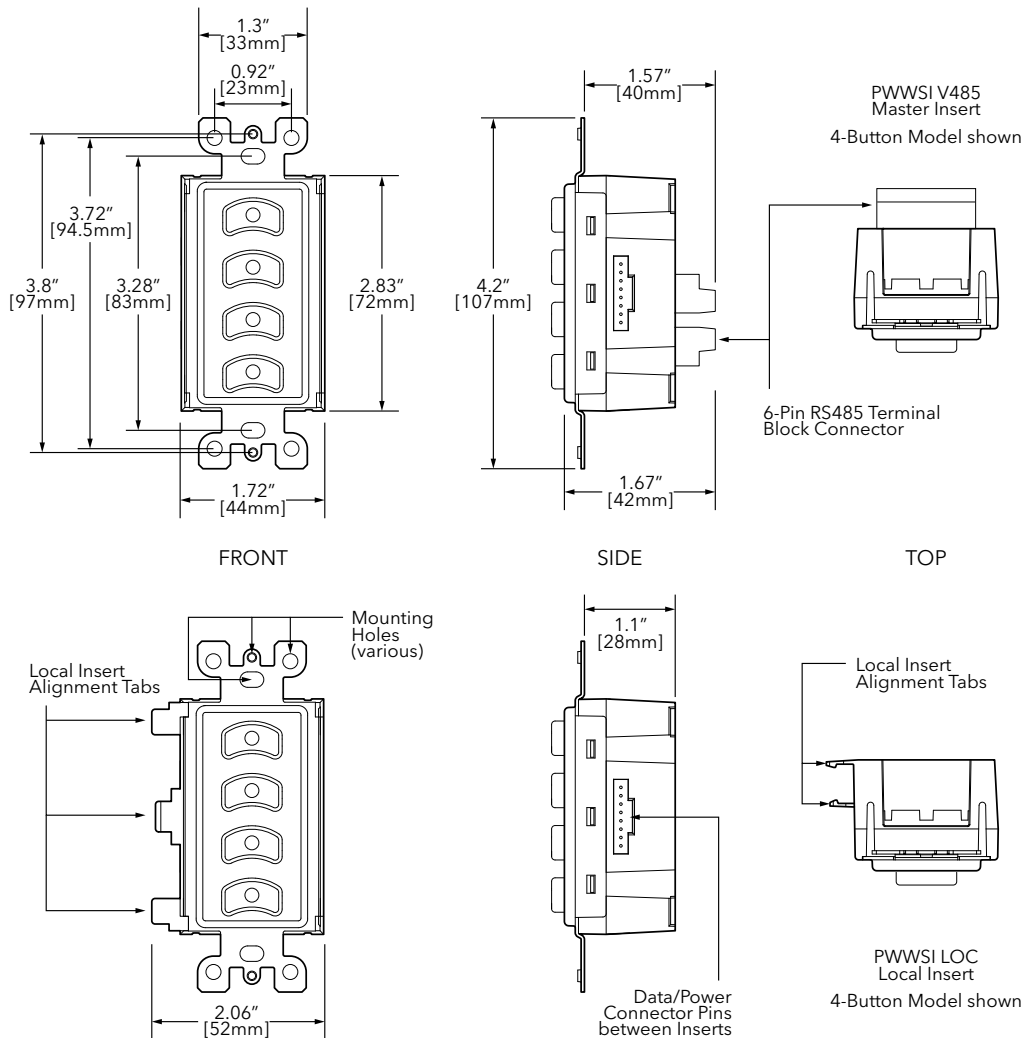
PREVIOUS		NEW
Part Number	Catalog Number	Description
0700-5431 [BL/WH]	PWWSI V485 B2 [BL/WH]	Wall Station Insert, Vignette 485 Master, 2-Buttons, [Black/White]
0700-5432 [BL/WH]	PWWSI V485 B4 [BL/WH]	Wall Station Insert, Vignette 485 Master, 4-Buttons, [Black/White]
0700-5433 [BL/WH]	PWWSI V485 S1 [BL/WH]	Wall Station Insert, Vignette 485 Master, Single Slider, [Black/White]
0700-5434 [BL/WH]	PWWSI V485 S2 [BL/WH]	Wall Station Insert, Vignette 485 Master, Dual Slider, [Black/White]
0700-5435 [BL/WH]	PWWSI V485 S3 [BL/WH]	Wall Station Insert, Vignette 485 Master, Triple Slider, [Black/White]
0700-5901 [BL/WH]	PWWSI LOC B2 [BL/WH]	Wall Station Insert, Local, 2-Buttons, [Black/White]
0700-5902 [BL/WH]	PWWSI LOC B4 [BL/WH]	Wall Station Insert, Local, 4-Buttons, [Black/White]
0700-5903 [BL/WH]	PWWSI LOC S1 [BL/WH]	Wall Station Insert, Local, Single Slider, [Black/White]
0700-5904 [BL/WH]	PWWSI LOC S2 [BL/WH]	Wall Station Insert, Local, Dual Slider, [Black/White]
0700-5905 [BL/WH]	PWWSI LOC S3 [BL/WH]	Wall Station Insert, Local, Triple Slider, [Black/White]

ADDITIONAL ORDERING INFORMATION

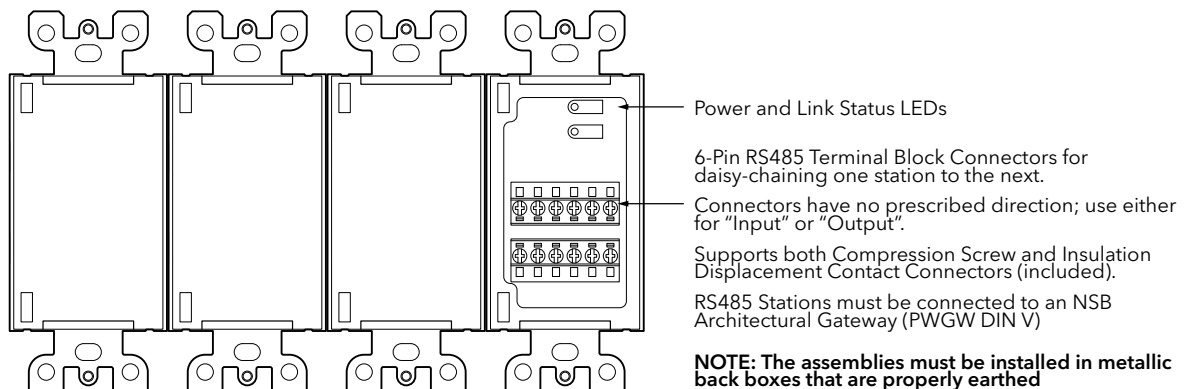
PWFP				EXAMPLE: PWFP G6 BL			
Series		Width		Finish			
PWFP	Pathway Faceplates	G1	1-Gang	BL	Matte Black		
		G2	2-Gang	SS	Stainless Steel		
		G3	3-Gang	WH	White		
		G4	4-Gang				
		G5	5-Gang				
		G6	6-Gang				

Accessories	
PWGW DIN V	Architectural Gateway, DIN-mount, Vignette (4.5")
PWGW DIN VD2	Architectural Gateway, DIN-mount, Vignette w 2 DMX (6.25")
PWGW DIN VD2C8	Architectural Gateway, DIN-mount, Vignette w 2 DMX & 8 Contact Closures (8")
PWGW DIN VC16	Architectural Gateway, DIN-mount, Vignette w 16 Contact Closures (8")
PWGW DIN VE	Architectural Gateway, DIN-mount, Vignette w Secondary Ethernet (6.25")
PWGW DIN VE2C8	Architectural Gateway, DIN-mount, Vignette w Secondary Ethernet & 8 Contact Closures (8")
PWACC D3G	Pathway Accessory, Stage Manager's 4U rack panel, with dual 3-gang positions

DIMENSIONS



Rear View of Assembled Station



APPLICATION RISER

