

OVERVIEW

The **CLAIRITY™** Link router serves as a connection point for one or more nLight ECLYPSE™ controllers and the **CLAIRITY** Link portal. Through the portal, factory representative experts can remotely update schedules, program devices, monitor for outages, and support networked nLight sites via secure cellular and Ethernet connections. Remote access eliminates the need for most in-person technician visits, reduces response time, and allows comprehensive access to maintain lighting operations.

FEATURES

- Provides factory experts the ability to remotely configure device settings, adjust time schedules, and perform diagnostic checks
- Optionally ships pre-installed in an nLight ECLYPSE™, shortening installation and readying access through connectivity plans once the remote antennas are installed
- Purchase of **CLAIRITY** Link router includes an initial 12-month Ethernet connectivity plan for remotely connecting without purchasing any additional plans
- Remote access to a connected site is customer controlled, with various service periods available for purchase using either Ethernet or Cellular connectivity. With no hidden fees and no continuous costs, **CLAIRITY** Link is an on-demand service that can be purchased at any time, and never impacts the on-premise function of the system
- Relay option allows connected controllers to be power cycled remotely
- Hardware includes a factory provisioned cellular SIM, which provides flexible cellular access through T-Mobile, AT&T, US Cellular, and other major carrier infrastructure, including Mexico and Canada
- Supports access to available LTE/4G/3G/2G technologies
- Optional service plans affordably supplement the ability to remotely connect. Service plans add remote programming, sustainment, and preventative maintenance options

Warranty

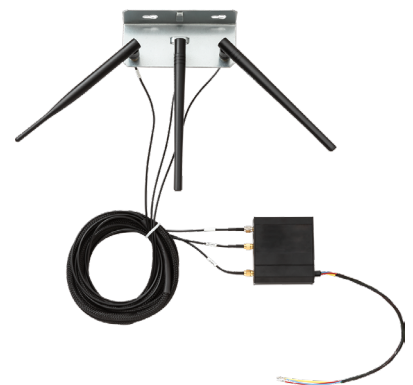
Five-year limited warranty. This is the only warranty provided and no other statements in this specification sheet create any warranty of any kind. All other express and implied warranties are disclaimed. Complete warranty terms located at: www.acuitybrands.com/support/warranty/terms-and-conditions

Note: Actual performance may differ as a result of end-user environment and application. Specifications subject to change without notice.



CLAIRITY Link Router

Cellular and Ethernet Router



ORDERING INFORMATION

Example: NECYMOD CAR1 12FT					
Series	Carrier	Antenna Length		Relay	
NECYMOD ¹ Cellular and Ethernet router	CAR1 ² US and Mexico SIM	12FT	12' SMA cable for remote antenna mounting	[blank]	Does not include low voltage relay
	CAR2 ² Canada			REL	Includes low voltage relay

ACCESSORIES	
NECYREPL MODREL	DIN mounted relay, toggleable through CLAIRITY Link portal

Notes

1. Purchase of CLAIRITY Link router includes standard 12-month Ethernet connectivity plan. Additional connectivity plans may be added to extend support or add cellular connectivity.
2. Remote services may be dependent upon availability of cellular service. Cloud connectivity via an Internet-connected LAN using Ethernet is supported. See the [nLight IT Requirements document](#) for more information. Cellular SIMs that are not used within the warranty period may require replacement before cellular connectivity can be provided.
3. Cellular connectivity performance may be affected by carrier coverage and antenna placement. Coverage by supported carriers should be verified prior to purchase.
4. See the Specifications section for a list of all supported carriers per country.
5. Use of default SIM included with hardware is required for REMCONN CELL connectivity plan. REMCONN ETH does not require use of a cellular SIM but is required for connectivity with the portal using a non-standard, third-party SIM, provided by, paid for, and maintained by others. Compatibility with non-default, third party SIMs is not guaranteed or warranted.

CONNECTIVITY PLANS

Remote support via the CLAIRITY Link solution is enabled through a connectivity plan (REMCONN). Purchase of a CLAIRITY Link router includes an initial 12-month Ethernet connectivity plan that begins upon shipment of hardware from the factory. For extended periods of connectivity, or for cellular connectivity, supplementary plans can be purchased. Flexible plans are offered in 3-month to 24-month durations and can be purchased at any time.

FEATURES

- Flexible connectivity periods offer affordable, connected assistance from nLight technical experts
- With no hidden fees and no continuous costs, CLAIRITY Link connectivity is an on-demand service that can be purchased at any time
- On-premise systems continue to operate when a connectivity plan is inactive
- Optional service plans affordably supplement the ability to remotely connect, adding comprehensive programming, sustainment, and preventative maintenance options

Example: REMCONN ETH 24MO CAR1					
Series	Connection Type	Service Length		Supported Countries	
REMCONN Connectivity plan to enable remote access by factory representatives	ETH Uses Ethernet connection to a customer-provided network with Internet access for communication with the CLAIRITY Link portal	3MO	3-month length	CAR1	US, Mexico, and Canada
		6MO	6-month length		
		9MO	9-month length		
	CELL ^{3,4,5} Includes a cellular plan to supplement or replace Ethernet connectivity for communication with the CLAIRITY Link portal	12MO	12-month length		
		18MO	18-month length		
		24MO	24-month length		

SPECIFICATIONS

Router	
Size:	2.92"H x 3.27"W x 0.99"D (74mm x 83mm x 25mm)
Power consumption:	< 6.5W
Input voltage range:	9-30VDC
Mobile:	4G LTE - up to 150Mbps 3G - up to 42Mbps 2G - up to 236.8kbps United States - ATT, T-Mobile/Sprint, US Cellular, Alaska Wireless Mexico - Telefonica Canada - Tellus, Bell, SaskTel
Ethernet:	WAN - 10/100Mbps; connects to an owner-provided, Internet-connected network. May be used for nLight ECLYPSE™ controller discovery on the same network. LAN - 10/100Mbps; used for discovery of nLight ECLYPSE™ controllers that are connected to a network without Internet connectivity
Wireless:	Mode - IEEE 802.11b/g/n Security - WPA2-Enterprise Wi-Fi Hotspot - used for modem and SIM diagnostics Wi-Fi Client - not supported
Environmental:	Operating temperature - -40C to 75C Operating humidity - 10% to 90% non-condensing Storage temperature - -45C to 75C
Security:	Firewall - pre-configured firewall Attack Prevention - DDOS prevention, port scan prevention WEB filter - whitelist for specifying allowed sites only Access control - control of TCP, UDP, ICMP packets, MAC address filter Complies with California Civil Code Title 1.81.26, Security of Connected Devices, approved under Senate Bill No. 327 (2018)"
Ingress Protection:	IP30
Regulatory:	FCC, IC/ISED, EAC, RCM, PTCRB, RoHS, CE/RED, WEEE, Wi-Fi Certified, CCC, Anatel, GCF, REACH, Thailand NBTC, Ukraine UCRF, SDPPI (POSTEL)
Antennas:	Mobile - 698-960/1710-2690 MHz, SMA male connector Wi-Fi - 2400-2483.5 MHz, SMA male connector
Input/Output:	Input - 1x digital, non-isolated input (on 4 pin power connector) Output - 1 x digital, open collector output (30V, 300 mA, on 4 pin power connector)
SIM:	1 x SIM slot (Mini SIM – 2FF), 1.8V/3V, external SIM holder
Dimensions:	83 x 25 x 74 mm
Supported Controllers:	Supports connectivity to nLight Wired and nLight AIR systems via an nLight ECLYPSE system controller

SYSTEM ARCHITECTURE

After a **CLAIRITY** Link router is connected to a network and its antennas are mounted in a location with significant cellular service, nLight ECLYPSE™ system controllers and their connected devices can be adjusted from the cloud using cellular connectivity. If Ethernet connectivity is preferred, connectivity with the cloud can be accomplished after outbound permissions are configured on the owner network.^{1,2,3,4,5}

FEATURES

- Link up to 5 nLight ECLYPSE™ controllers to the **CLAIRITY** Link portal through a single router, reducing the need for unnecessary connectivity hardware
- Communication between a router and portal only starts through outbound communication initiated by a router
- Outbound communication from the router is limited to a whitelist of endpoints, including only manufacturer-managed servers
- An integrated firewall prevents unauthorized access to system controllers on the router's local area network
- Router only forwards information from connected nLight ECLYPSE™ controllers and their connected devices, not information from other systems
- Remote configuration of devices is possible only after portal and system password authentication
- Router to cloud communication is protected by TLS1.2 encryption
- AES 256-bit encryption protects cloud data at rest

