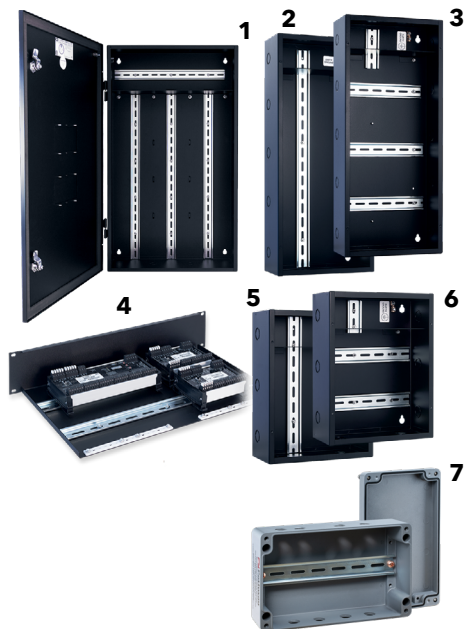


DIN ENCLOSURES & RACK-MOUNT TRAY



Models shown:

1. PWENC LRG VER
2. PWENC MED VER
3. PWENC MED HOR
4. PWENC SHELF HOR
5. PWENC SML VER
6. PWENC SML HOR
7. PWENC IP65SML HOR

WARRANTY

3-year limited warranty. This is the only warranty provided and no other statements in this specification sheet create any warranty of any kind. All other express and implied warranties are disclaimed. Complete warranty terms located at: <https://www.acuitybrands.com/support/warranty>

NOTE

Actual performance may differ as a result of end-user environment and application. Specifications subject to change without notice.

OVERVIEW

The Pathway DIN Enclosures are enclosures designed to house DIN-mountable devices and power supplies for permanent installs.

The NEMA 1 variant is available in three sizes Small, Medium and Large, and with Horizontal or Vertical DIN rail layouts, and our Pathway System Assembly software makes it is easy to configure an enclosure to fit your particular DIN equipment setup.

The Pathway DIN Rack Shelf Unit provides a method to create a custom rack-mountable DIN assembly for integration into 19" equipment racks without needing its own enclosure.

Constructed from rugged powdercoated steel, the Pathway DIN Enclosures and Rack Shelf will withstand the abuse of backstages and electrical closets.

The IP65 enclosure is suitable to mount 9.5" of DIN products. Its corrosion resistant diecast aluminum housing with NPT threaded holes is suitable for placement in wet locations, indoors or out. It is supplied with spare rubbergasket plugs for the holes not used.

FEATURES

- Contractor friendly, sturdy steel construction
- Conduit knockouts on all sides
- Logical arrangement makes wiring neat and easy
- Barrired high-voltage section for power supplies [not including PWENC SHELF] (power supplies ordered separately)
- Internal DIN rail will accept Pathway DIN devices and third-party 35mm DIN-rail modules
- No cooling fans required
- Removable door [PWENC SML and PWENC MED models]
- Removable hinged door [PWENC LRG model]
- Two 3-Gang cutouts on front door with blank cover plates [PWENC LRG model]
- Black powdercoat finish on NEMA1 enclosures
- Pre-installation service of Pathway DIN devices and power supply is available (PWSA); when DIN devices are factory-installed, assembly is UL-listed
- Rack Shelf (PWENC SHELF) fits standard 19" equipment racks, 2 RU height accommodates all Pathway DIN devices
- Rack Shelf includes integrated cable management strips along rear edge
- IP65 NEMA 4 rated enclosure for PWENC IP65SML HOR
- PWENC IP65SML HOR - Rugged, diecast aluminum
- Two piece "tongue & groove" construction with a one-piece silicone rubbergasket provides protection against ingress of dust and water
- Four captured stainless steel machine screws for securing the cover
- Easy to wall mount using "through box - blind hole" construction, outside of gasket protection



The System Assembly Tool is free software that helps you design lighting control systems without having CAD skills and without fear of getting the product nomenclature wrong. Choose from lists that only show you devices that fit the enclosure, wall station or inserts you choose. The software creates a drawing and lists all the products and quantities in the Bill of Materials (BOM). There is even a button to copy the full catalog number to your clipboard for use in other documents as you design your system.

ORDERING INFORMATION

PWENC			EXAMPLE: PWENC MED VER	
Series	Model		DIN Rail Layout	
PWENC Pathway DIN Enclosures	SHELF ¹	2 RU Shelf Unit	HOR	Horizontal Rails
	SML	Small DIN Enclosure, 10" x 13" x 4.5"	VER	Vertical Rails
	MED	Medium DIN Enclosure, 10" x 23" x 4.5"		
	LRG ²	Large DIN Enclosure, 18.5" x 31.5" x 6.25"		
	IP65SML ³	IP65 Rated, 9.375" x 6.3" x 3.52"		

Notes

1. SHELF model available only in HOR.
2. LRG model available only in VER.
3. IP65SML model only available in HOR.

SPECIFICATIONS

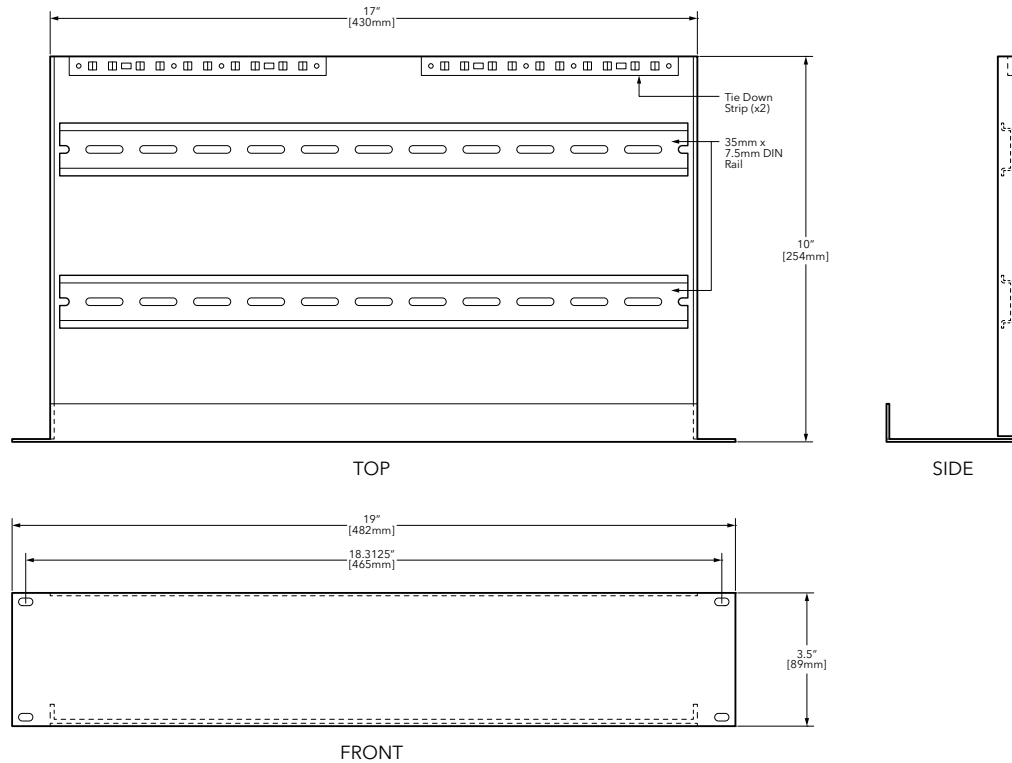
Electrical	Regulatory Compliance	PWENC SHELF HOR CE PWENC [SML/MED] cUL & UL Listed PWENC LRG VER CE CSA-listed PWENC IP65SML cUL & UL Listed
	Other	Barriered High-Voltage section for power supplies [not applicable to PWENC SHELF]
Mechanical	Dimensions	PWENC SHELF HOR Face: EIA 19" (482mm) x 2RU (3.5") Tray: 17" W x 10" D (432mm W x 254mm D) PWENC SML [HOR/VER] 10" W x 13" H x 4.5" D (260mm W x 330mm H x 114mm D) PWENC MED [HOR/VER] 10" W x 23" H x 4.5" D (260mm W x 584mm H x 114mm D) PWENC LRG VER 18.5" W x 31.5" H x 6.25" D (470mm W x 800mm H x 159mm D) PWENC IP65SML HOR 9.375" W x 6.3" H x 3.53" D (240mm w x 160mm H x 91mm D)
	Weight	PWENC SHELF HOR 5.1 lbs (2.3 kg) PWENC SML [HOR/VER] 8.5 lbs (3.9 kg) PWENC MED [HOR/VER] 13.5 lbs (6.1 kg) PWENC LRG VER 42.5 lbs (19.3 kg) PWENC IP65SML HOR 2.7 lbs (1.2 kg)
Environmental	Standard Compliance	PWENC SHELF HOR RoHS 2011/65/EU:2015/863 NEMA1 Enclosure PWENC [SML/MED] NEMA1 Enclosure
		PWENC LRG VER RoHS 2011/65/EU:2015/863 NEMA1 Enclosure PWENC IP65SML HOR NEMA4X Enclosure

PART NUMBER CROSS-REFERENCE

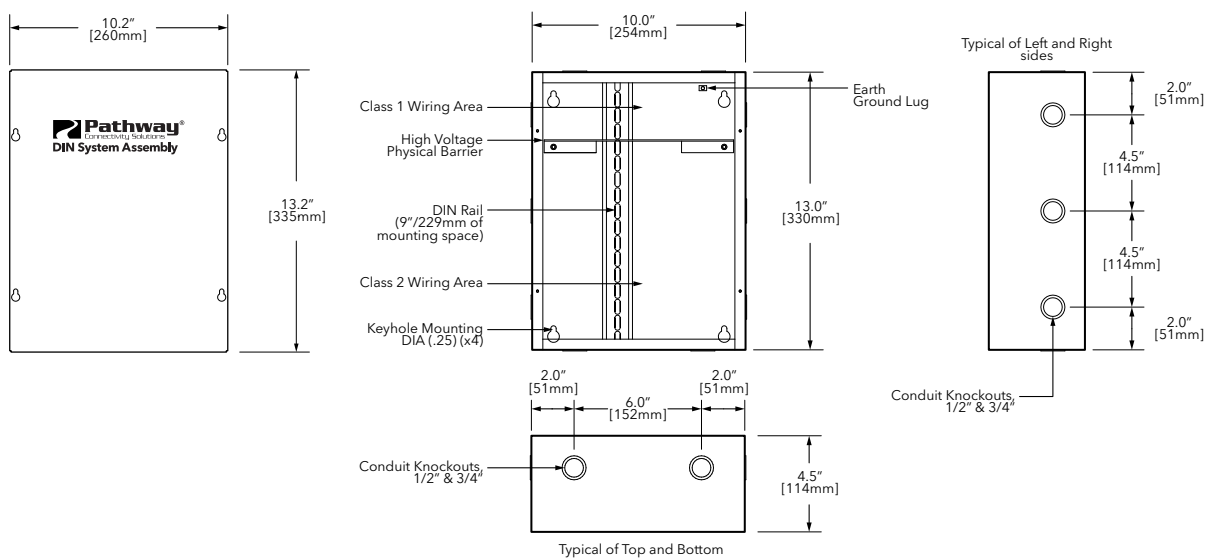
PREVIOUS	NEW	
Part Number	Catalog Number	Description
1103	PWENC LRG VER	DIN System Enclosure, Large 18.5" x 31.5" x 6.25", 3 x 24" Vertical Rails
1105	PWENC MED HOR	DIN System Enclosure, Medium 10" x 23" x 4.5", with 3 x 9" Horizontal Rails
1106	PWENC MED VER	DIN System Enclosure, Medium 10" x 23" x 4.5", with 1 x 19" Vertical Rail
1107	PWENC SHELF HOR	DIN System Enclosure, 2-RU Shelf unit with 2 x 16.5", Horizontal Rails
1108	PWENC SML HOR	DIN System Enclosure, Small 10" x 13" x 4.5", with 2 x 9" Horizontal Rails
1109	PWENC SML VER	DIN System Enclosure, Small 10" x 13" x 4.5", with 1 x 9" Vertical Rail
	PWENC IP65SML HOR	DIN System Enclosure, IP65 Rated, 8 x NPT threaded holes, 1 x 9.5" Horizontal Rail

DIMENSIONS

PWENC SHELF HOR

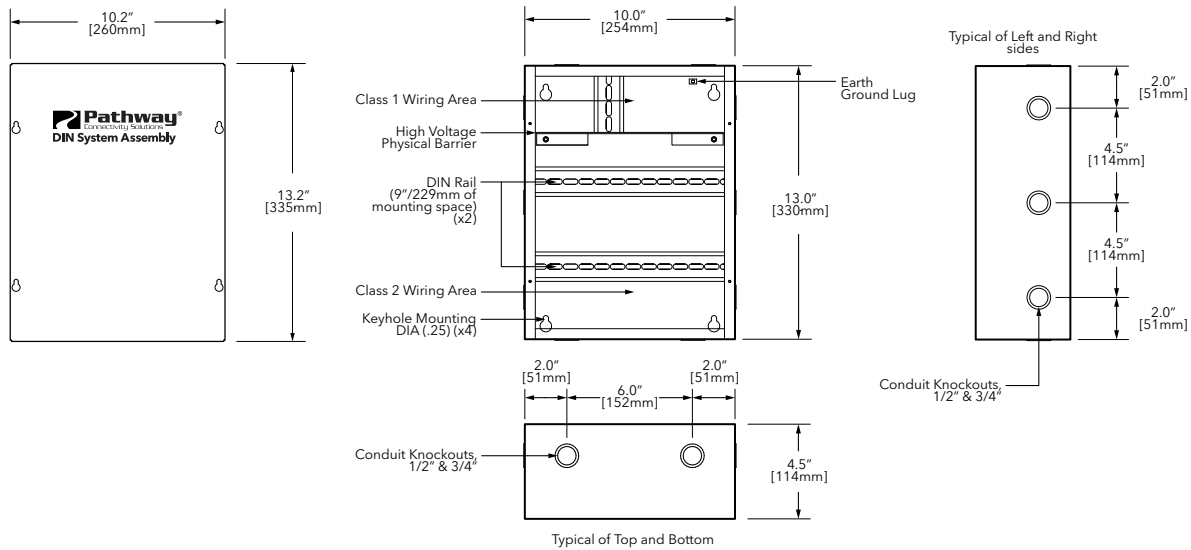


PWENC SML VER

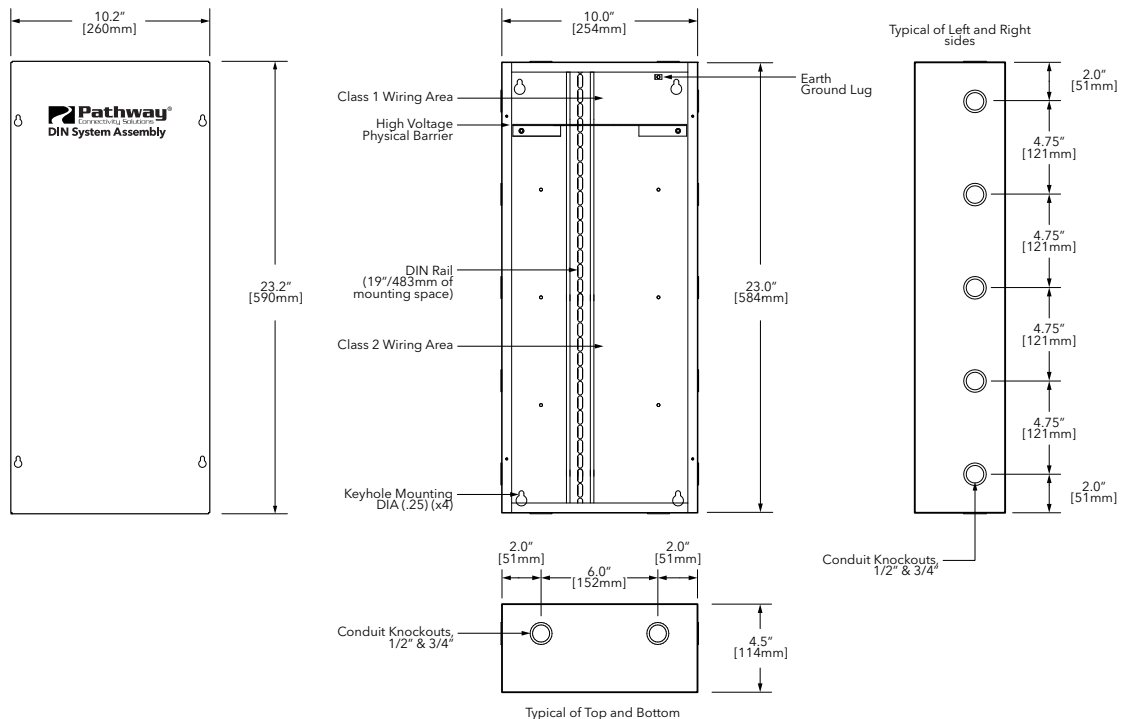


DIMENSIONS

PWENC SML HOR

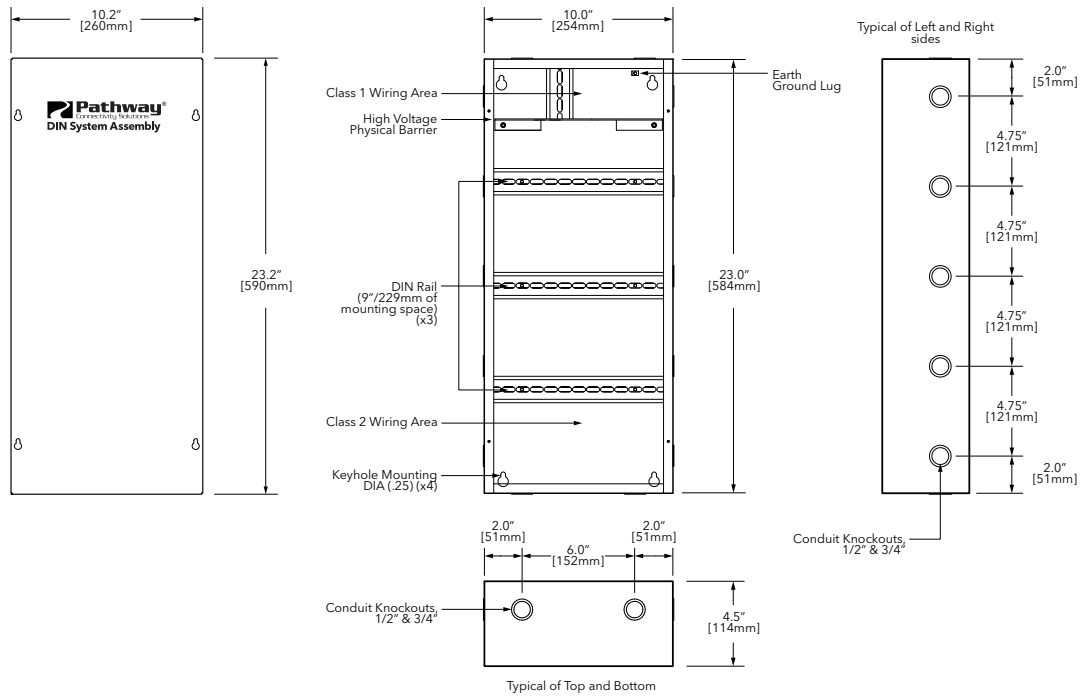


PWENC MED VER

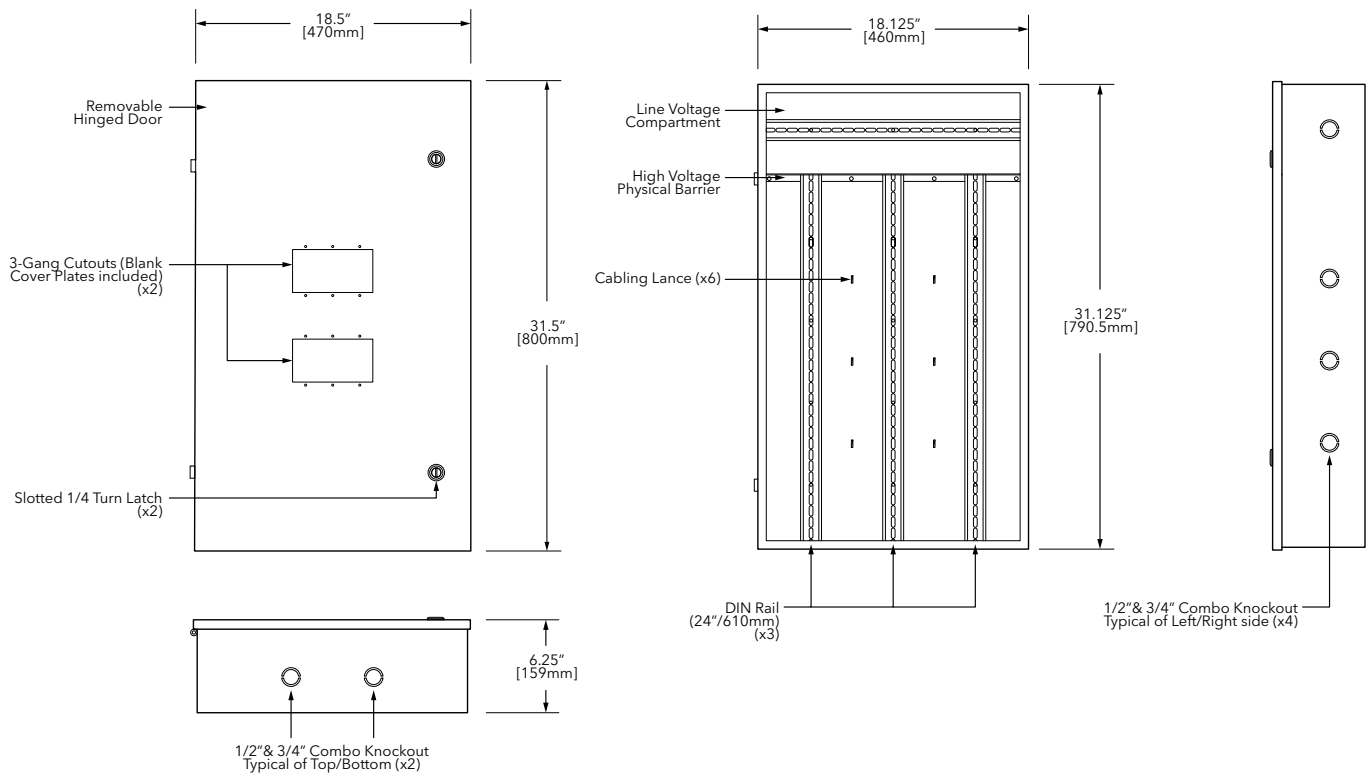


DIMENSIONS

PWENC MED HOR



PWENC LRG VER



DIMENSIONS

PWENC IP65SML HOR

