



General Illumination Surface Ceiling Cylinder

6"

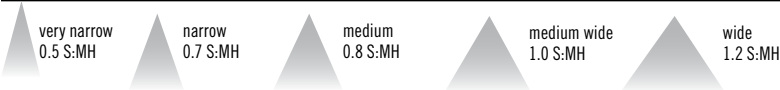


OVERVIEW

Feature Set

- Batwing distribution with feathered edges provides even illumination on horizontal and vertical surfaces
  - Bounding Ray™ optical design
  - 45° Cutoff to source and source image
  - Fully serviceable lensed LED light engine
  - 70% lumen maintenance at 60,000 hours
  - 2.5 MacAdam Ellipse; 85 CRI typical, 90+ CRI optional
  - Fixtures are damp location standard; wet location optional (WL) - covered ceiling required; IP66 optional - covered ceiling required
- 20 standard colors in textured and gloss finish; custom or RAL colors also available
  - Field configurable surface junction box conduit covers available
  - Completely integral emergency battery option available
  - ENERGY STAR® Certified product\*
  - UGR of zero for fixtures aimed at nadir with a cut-off equal to or less than 60deg per CIE 117-1995 Discomfort Glare in Interior Lighting. [UGR FAQ](#)

Distribution



Superior Performance

Nominal Lumens	250	500	750	1000	1500	2000	2500	3000	3500	4000	4500	5000	6000	8000	10,000	12,000
Delivered Lumens	297	519	776	994	1471	2006	2537	3077	3542	4027	4533	5256	6371	8247	10637	12332
Wattage	3.4	6.2	8.2	9.6	14.7	19.7	24.7	29.5	33.8	39.0	47.3	48.7	57.6	74.9	97.1	115
Lumens per Watt	87.4	83.7	94.6	103.5	100.1	101.8	102.7	104.3	104.8	103.3	95.8	107.9	110.6	110.1	109.5	107.2

COMPLEMENTARY PRODUCTS

Coordinated Apertures | Multiple Layers of Light



General Illumination Layer | EVO



High Center Beam Layer | Incito



EVO + Incito — Multiple Layers of Light

Core

Downlight

Adjustable

Open Wallwash

Lensed Wallwash

Cylinder

Pinhole

Bevel

Hyperbolic

Healthcare

MRI

Surgical Suite

Patient Room

Special Applications

Dynamic

Food Service

Vandal/Tamper

Clean Room

Shower

Steam Room

Luminaire Type:

Catalog Number:

EXAMPLE: EV06SC 35/15 AR LSS MWD MVOLT EZ1 JBXCC DWHG

Series	Color Temperature	Lumens	Trim Color	Reflector Finish	Distribution	Voltage
EV06SC EVO 6in Surface Ceiling Round Cylinder Open Downlight	27/ 2700 K	02 250 lumens	AR Clear	LSS Semi-specular	VND Very narrow (0.5 s/mh)	MVOLT 120V - 277V
	30/ 3000 K	05 500 lumens	PR Pewter	LD Matte diffuse	ND Narrow (0.7 s/mh)	120 120V
	35/ 3500 K	07 750 lumens	WTR Wheat	LS Specular	MD Medium (0.9 s/mh)	277 277V
	40/ 4000 K	10 1000 lumens	GR Gold		MWD Medium wide (1.0 s/mh)	347* 347V
	50/ 5000 K	15 1500 lumens	WR <sup>2</sup> White painted		WD Wide (1.2 s/mh)	
		20 2000 lumens	BR <sup>2</sup> Black			
		25 2500 lumens	WRAMF <sup>2</sup> White Anti-microbial			
		30 3000 lumens	BZR <sup>2</sup> Dark Bronze painted			
		35 3500 lumens	TRALTB <sup>2,3</sup> Trim RAL # TBD (TBD for pricing only)			
		40 4000 lumens	TCPC <sup>2,3</sup> Trim Custom Paint Color TBD (TBD for pricing only)			
		45 4500 lumens				
		50 5000 lumens				
		60 6000 lumens				
		80 8000 lumens				
		100 <sup>1</sup> 10,000 lumens				
		120 <sup>1</sup> 12,000 lumens				

Driver <sup>5</sup>	Mounting	Emergency Option
GZ10 0-10V driver dims to 10%	JBX Integral driver, Recessed or Surface J-box	(blank) No emergency options
GZ1 0-10V driver dims to 1%	JBXCC Integral driver, Surface J-box with Conduit Covers	E6W 6W integral emergency battery, CA Title 20 compliant emergency battery pack with integral test switch. Only available with GZ10, GZ1 and ELV Drivers. Only for use with 500-4500 lumen options.
EZ10 eldoLED 0-10V ECOdrive. Linear dimming to 10% min.	RGH <sup>6</sup> Recessed Gear Housing	E7WCP IOTA <sup>®</sup> 7W Constant Power emergency battery. Only for use with 750-8000 lumen options (sidecar)
EZB eldoLED 0-10V SOLOdrive. Logarithmic dimming to <1%.		E10WCP IOTA <sup>®</sup> 10W Constant Power, CA Title 20 compliant emergency battery pack with integral test switch. Only for use with 1000-8000 lumen options. (sidecar or RGH)
EDAB <sup>6</sup> eldoLED SOLOdrive DALI. Logarithmic dimming to <1%.		E10WCPR IOTA <sup>®</sup> 10W Constant Power, CA Title 20 compliant emergency battery pack with remote test switch. Only for use with 1000-8000 lumen options. (requires RGH)
EDXB <sup>6,7</sup> eldoLED POWERdrive DMX with RDM (remote device management). Square Law dimming to <1%. Min: 1000LM; Max: 8000LM. Not available with Emergency Options.		E15WCP IOTA <sup>®</sup> 15W Constant Power, CA Title 20 compliant emergency battery. Only for use with 1500-8000 lumen options. (sidecar)
ECOD <sup>6</sup> Lutron <sup>®</sup> EcoSystem <sup>®</sup> digital Hi-Lume 1% soft-on, fade to black. Max: 8000LM except 4500LM.		GTD IOTA <sup>®</sup> Generator Transfer Device. Specify 120V or 277V (requires RGH)
ELV <sup>6</sup> Electronic line voltage / Forward phase / Triac dimming, 120V Only.		

Control Interface <sup>9</sup>	Options	Architectural Colors - Powder Paint <sup>3</sup>
(blank) No controls	90CRI High CRI (90+)	DWHAMF Gloss White with Anti-microbial finish
NLT nLight <sup>®</sup> dimming pack. Specify 120V or 277V.	CP <sup>11</sup> Chicago Plenum. Specify 120V or 277V (requires RGH)	DDB Gloss Dark Bronze
NLTER <sup>10</sup> nLight <sup>®</sup> dimming pack for fixtures on emergency circuit. Specify 120V or 277V.	HAO <sup>12</sup> HAO High Ambient Option (40°C)	DBL Matte Black
NLTAIR2 nLight <sup>®</sup> AIR dimming pack. Specify 120V or 277V.	IP66 <sup>13</sup> Lensed, IP66 rated	DWH Gloss White
NLTAIRER2 <sup>10</sup> nLight <sup>®</sup> AIR dimming pack for fixtures on emergency circuit. Specify 120V or 277V.	N80 <sup>14</sup> nLight Lumen Compensation	DMB Matte Medium Bronze
	SF Single fuse. Specify 120V or 277V.	DNA Gloss Natural Aluminum
	WL <sup>13</sup> Wet Location	DSS Gloss Sandstone
		DGC Gloss Charcoal Grey
		DTG Gloss Tennis Green
		DBR Gloss Bright Red
		DSB Gloss Steel Blue
		DDBT Textured Dark Bronze
		DBLB Textured Black
		DWHG Textured White
		DBNH Textured Bronze
		DNAT Textured Natural Aluminum
		DSST Textured Sandstone
		DSPD Textured Dark Grey
		DSPE Textured Green
		DSPH Textured Light Red
		RALTB <sup>2</sup> Cylinder RAL # TBD (TBD for pricing only)
		CPC Cylinder Custom Paint Color TBD (TBD for pricing only)

ACCESSORIES —order as separate catalog numbers (shipped separately)

GCOLORS KIT	Architectural Colors chip kit, consisting of powder-coat and plated finishes
CYLJBOXADPT 4SQ2OCT	4in Square J-box to 4in Octagonal J-box adaptor. Replace ___ with Architectural Color or PRM for primed ready for field painting

ORDERING NOTES

1. 10,000 & 12,000 lumens not available with 347, EDXB, Lutron, SGB, SGBCC, RGH, Emergency Options, HAO, WL & CP.

2. Not available with Reflector Finishes.

3. Replace with applicable RAL number and finish when ready to order. See [RAL BROCHURE](#) for available color options. Not available with integral test switch emergency battery pack options. For details on all Acuity Architectural paint colors, RAL and Custom colors, please see [Architectural colors](#).

4. Integral 347V drivers available with GZ10 and GZ1 driver options only - 3500LM max. All other drivers (and GZ1 & GZ10 above 3000LM) will come with a step-down transformer - factory installed with RGH mounting, and field installed with JBX and JBXCC mounting (remote mount location and access to device required). Not available with SGB, SGBCC or Emergency Options. Max 5000LM.

5. Refer to [Tech 240](#) for compatible dimmers.

6. Not available with Control Interfaces.

7. Includes terminator resistor. Not available with 250-750 lumen packages.

8. Not available with E6W, E7W or E15WCP Emergency Options.
9. Factory installed with RGH mounting, otherwise field installed (remote mount location required).

10. ER for use as UL924 Emergency Operation via power sense lead. Will require an emergency hot feed and normal hot feed. EM for use as UL924 Emergency Operation via power interrupt detection.

11. CP not valid with NLTAIR2, NLTAIRER2 or Emergency Options.

12. Not available with WL, IP66, or sidecar Emergency Options. Max: 2500 lumens.

13. Not available with JBXCC or sidecar Emergency Options. Max: 3500LM.

14. Fixture begins at 80% light level. Must be specified with NLT or NLTER. Only available with EZ10 and EZ1 drivers.

## Optical Assembly

Fully serviceable and upgradeable lensed LED light engine suitable for field maintenance or service from below the ceiling. Optical design is a Bounding Ray™ design with 45° cutoff to source and source image. Top down flash characteristic for superior glare control.

## Electrical

The luminaire shall operate from a 50 or 60 Hz  $\pm 3$  Hz AC line over a voltage ranging from 120 VAC to 277 VAC. Integral 347V drivers available with GZ10/GZ1 driver options. 347V with all other drivers available via integral step-down transformer with RGH mounting, and remote mount step-down transformer with JBX/JBXCC mounting. The fluctuations of line voltage shall have no visible effect on the luminous output.

The luminaire shall have a power factor of 90% or greater at all standard operating voltages and full luminaire output.

Sound Rated A+. Driver shall be >80% efficient at full load across all input voltages.

Input wires shall be 18AWG, 300V minimum solid copper.

All drivers are ROHS compliant.

## Controls

Luminaire shall be equipped with interface for nLight wired or nLight AIR networks with integral power supply as per specification.

## Emergency

Luminaires supplied with an emergency battery pack comply with NFPA 101 (Life Safety Code) to provide egress lighting. Emergency batteries provide up to 15W to a luminaire for 90 minutes in emergency operation when there is normal AC power loss.

Integral emergency battery with a test switch discreetly integrated into the cylinder is available up to 6W (E6W). Provides a consistent look within the cylinder family – maintaining the same dimensions as the cylinders without emergency options.

IOTA® emergency batteries are available in 7W (E7WCP), 10W (E10WCP), and 15W (E15WCP). Emergency batteries are offered in a side car housing that mounts right next to the cylinder with the test switch integrated into the side car housing. Side car housing will come finished in the same color as the cylinder for a unified look.

IOTA® 10W emergency batteries with RGH mounting allow for the emergency batteries to be hidden away within the plenum space. Available with either a test switch integrated into the cylinder (E10WCP), or a remote test switch (E10WCPR).

Luminaires equipped with an IOTA® generator transfer device (GTD) work in conjunction with an auxiliary generator or a central inverter system to power luminaires for egress lighting.

## Dimming

The luminaire shall be capable of continuous dimming without perceivable stroboscopic flicker as measured by flicker index (ANSI/IES RP-16-10) over a range of 100 – 10%, 100 – 1.0% or 100 – 0.1% of rated lumen output with a smooth shut off function to step to 0%.

eldoLED LED drivers shall conform to IEEE P1789 standards. Alternatively, manufacturers must demonstrate conformance with product literature and testing which demonstrates this performance. Systems that do not meet IEEE P1789 will not be considered.

Driver is inaudible in 24dB environment, and stable when input voltage conditions fluctuate over what is typically experienced in a commercial environment.

## Construction

Heavy-gauge aluminum construction.

Extruded body with flangeless reflector allows flow-through passive thermal management.

Surface ceiling mount for direct installation to 4" recessed or surface octagonal or square junction box.

Optional field configurable conduit covers available. Conduit covers match cylinder in finish and diameter.

Recessed housing available for above ceiling drivers, nLight, CP, GTD, and emergency battery options.

## Listings

Fixtures are CSA Certified to meet US and Canadian Standards: All fixtures manufactured in strict accordance with the appropriate and current requirements of the "Standards for Safety" to UL, damp location standard; wet location covered ceiling optional (WL); IP66 rating optional (IP66).

Luminaire configurations are Energy Star certified through testing in EPA-recognized laboratories, with the results reviewed by an independent, accredited certification organization. Visit [www.energystar.gov](http://www.energystar.gov) for specific configurations listed. \*Not all configurations are Energy Star listed.

## Photometrics

LEDs tested to LM-80 standards. Measured by IESNA Standard LM-79-08 in an accredited lab. Lumen output shall not decrease by more than 30% over the minimum operational life of 60,000 hours.

Color appearance from luminaire to luminaire of the same type and in all configurations, shall be consistent both initially and at 60,000 hours and operate within a tolerance of <2.5 MacAdam ellipse as defined by the center of the quadrangles defined in ANSI C78.377-2015.

## Buy American Act

This product is assembled in the USA and meets the Buy America(n) government procurement requirements under FAR, DFARS and DOT regulations. Please refer to [www.acuitybrands.com/buy-american](http://www.acuitybrands.com/buy-american) for additional information.

## Warranty

5-year limited warranty. This is the only warranty provided and no other statements in this specification sheet create any warranty of any kind. All other express and implied warranties are disclaimed. Complete warranty terms located at: [www.acuitybrands.com/support/warranty/terms-and-conditions](http://www.acuitybrands.com/support/warranty/terms-and-conditions)

## Note:

Actual performance may differ as a result of end user environment and application. All values are design or typical values, measured under laboratory conditions at 25 °C.

## A+ Capable Luminaire

This item is an A+ capable luminaire, which has been designed and tested to provided consistent color appearance and out-of-the-box control capability with simple commissioning when used with Acuity Brands controls products.

All configurations of this luminaire are calibrated and tested meet the Acuity Brands' specification for chromatic consistency - including color rendering, color fidelity and color temperature tolerance around standard CIE chromaticity coordinates.

To learn more about A+, visit [www.acuitybrands.com/aplus](http://www.acuitybrands.com/aplus).

EVO - eldoLED Driver Default Dimming Curve			
Nomenclature	Min Dimming	Driver Dim Curve	Control Dim Curve
EZ10	10%	Linear	Linear/Logarithmic
EZ1	1%	Linear	Linear/Logarithmic
EZB	<1%	Logarithmic	Linear
EDAB	<1%	Logarithmic*	Linear
EDXB	<1%	Square	Linear

\*Changeable through DALI controller

Driver		Control Provided (note: 347V/UVOLT versions provided with 347 option selected)			
Nomenclature	Description	NLT	NLTER	NLTAIR2	NLTAIRER2
GZ10	0-10V driver dims to 10%	nPP16 D EFP	nPP16 D ER EFP	RPP20 D 24V G2	RPP20 D 24V ER G2
GZ1	0-10V driver dims to 1%	nPP16 D EFP	nPP16 D ER EFP	RPP20 D 24V G2	RPP20 D 24V ER G2
EZ10	eldoLED 0-10V ECOdrive	nPS 80 EZ	nPS 80 EZ ER	RPP20 D 24V G2	RPP20 D 24V ER G2
EZ1	eldoLED 0-10V ECOdrive	nPS 80 EZ	nPS 80 EZ ER	RPP20 D 24V G2	RPP20 D 24V ER G2
EZB	eldoLED 0-10V SOLOdrive	nPS 80 EZ	nPS 80 EZ ER	RPP20 D 24V G2	RPP20 D 24V ER G2

J-box Compatibility Matrix		Cylinder Configurations		
		JBX	JBX w/EDXB Driver	JBXCC
Recommended J-box (by others)	4" Octagonal 4x4x1.5 deep"	✓	✗	✓
	4" Octagonal 4x4x2.125 deep	✓	✓	✗
	4" Square 4x4x1.5 deep	✓ *with adaptor plate accessory	✗	✗

Standard Architectural Color Options for Cylinder Bodies



**DSS LITHONIA** P12  
Sandstone



**DSST TEXTURED** P90  
Sandstone



**DBR LITHONIA** P34  
Bright Red



**DSPH TEXTURED** P80  
Light Red



**DMB LITHONIA** P11  
Medium Bronze



**DBNH TEXTURED** P74  
Bronze



**DTG LITHONIA** P33  
Tennis Green



**DSPE TEXTURED** P78  
Green



**DSB LITHONIA** P49  
Steel Blue



**DNA LITHONIA** P07  
Natural Aluminum



**DNAT TEXTURED** P89  
Natural Aluminum



**DGC LITHONIA** P32  
Charcoal Gray



**DSPD TEXTURED** P77  
Dark Grey



**ddb LITHONIA** P50  
Dark Bronze



**ddbT TEXTURED** P88  
Dark Bronze



**DBL LITHONIA** P13  
Black



**DBLB TEXTURED** P75  
Black



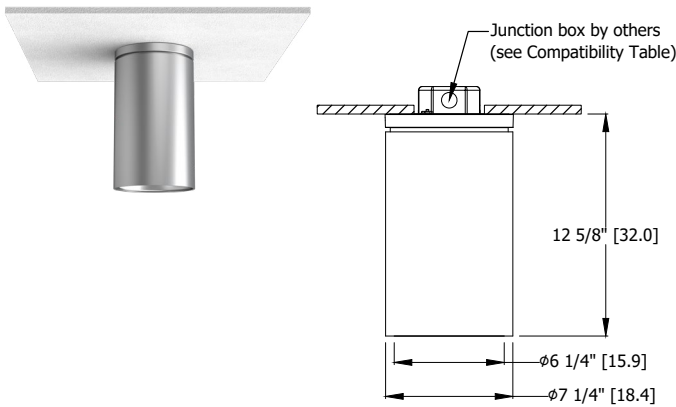
**DWH LITHONIA** P21  
White



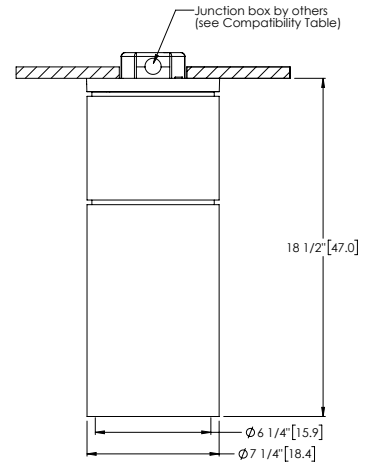
**DWHG TEXTURED** P86  
White

NOTE: These colors were carefully reproduced to give as true a depiction as possible of finished product color. Some colors, however, may vary slightly from actual appearance due to display/printing variations and limitations. Please order the GCOLORS KIT listed in the 'Accessories' section of the spec sheet for an accurate paint chip sample.

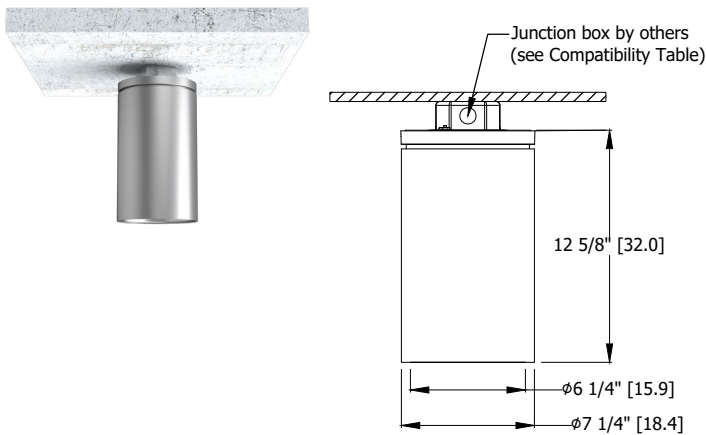
**JBX Recessed J-Box**



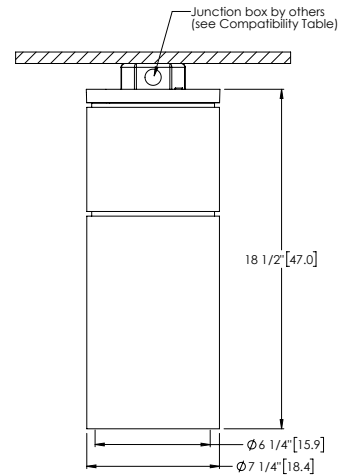
**10,000LM- 12,000LM JBX Recessed**



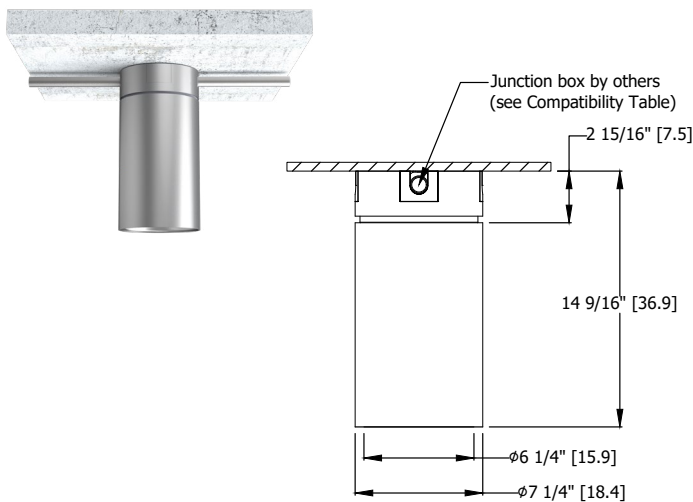
**JBX Surface J-Box**



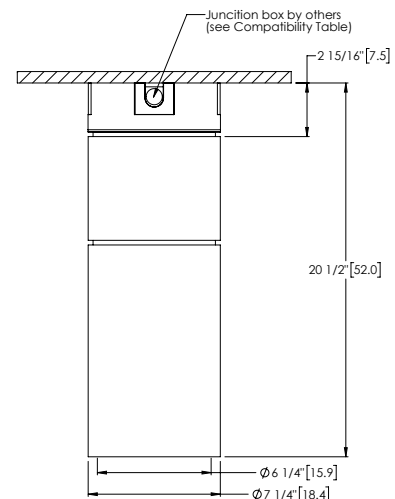
**10,000LM- 12,000LM JBX Surface**



**JBXCC Surface J-Box with Conduit Covers**

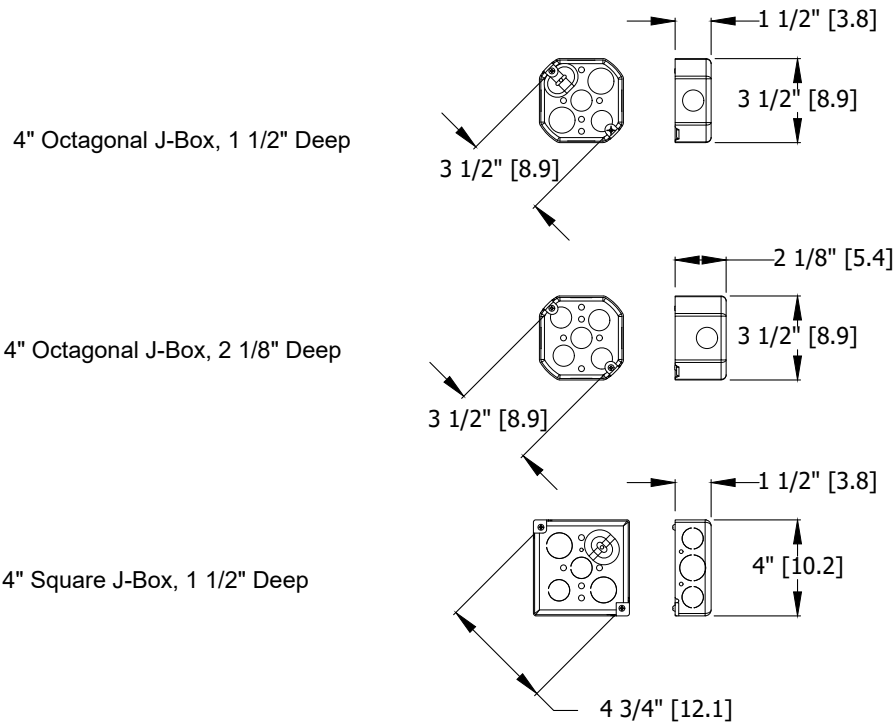


**10,000LM- 12,000LM JBXCC**



\*Dimensions in inches [centimeters]

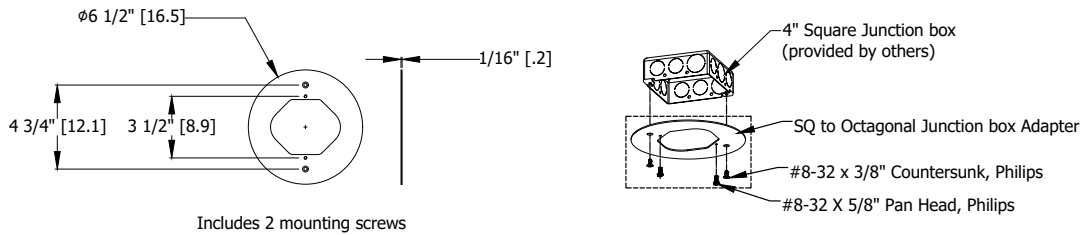
Junction Box Dimensions (by others)



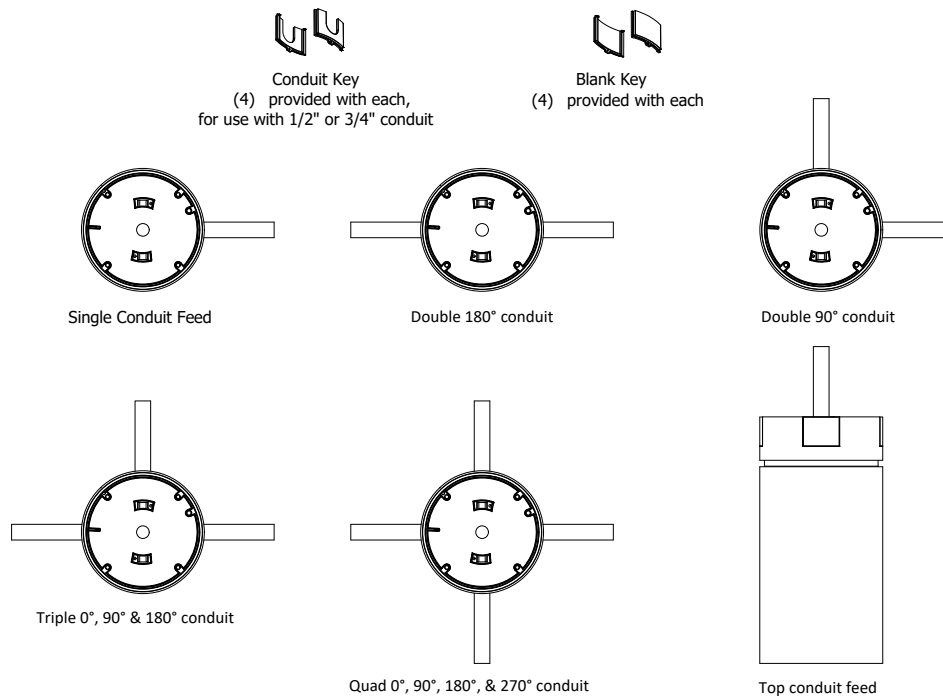
\*Dimensions in inches [centimeters]



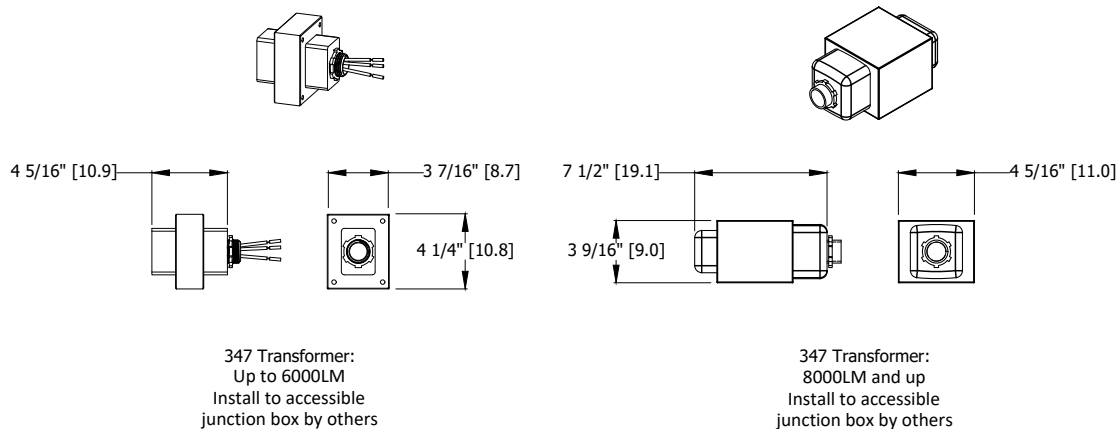
### Cylinder Adapter Plate



### Conduit Feed Examples and Keys



### 347V Stepdown Transformer

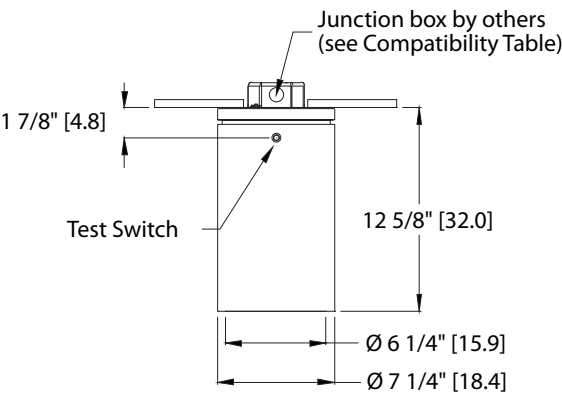


\*Dimensions in inches [centimeters]

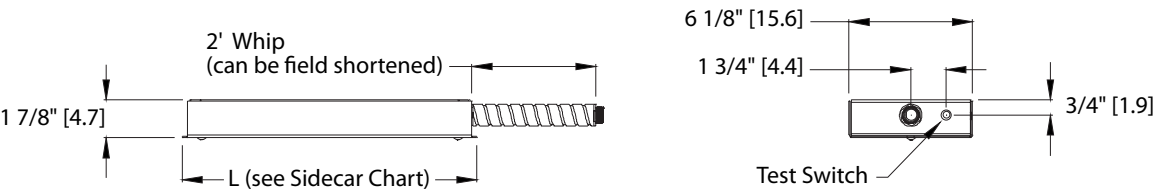


DIMENSIONAL DATA

E6W Integral Emergency Battery

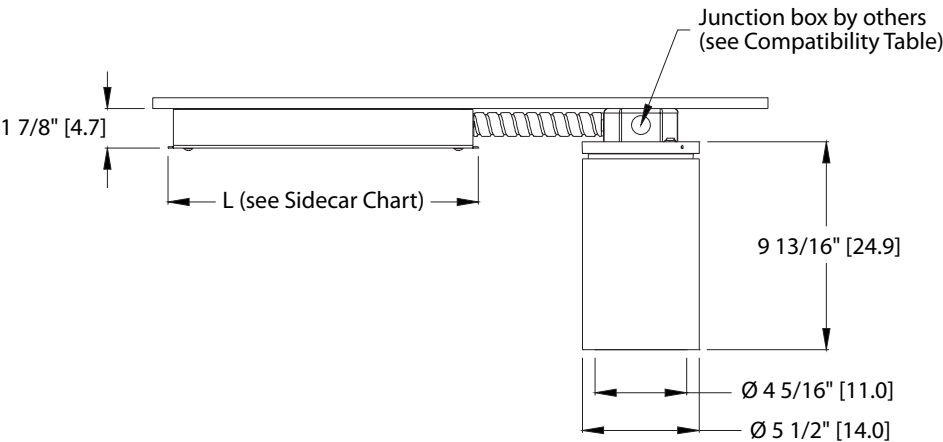


Emergency Battery Sidecar Dimensions



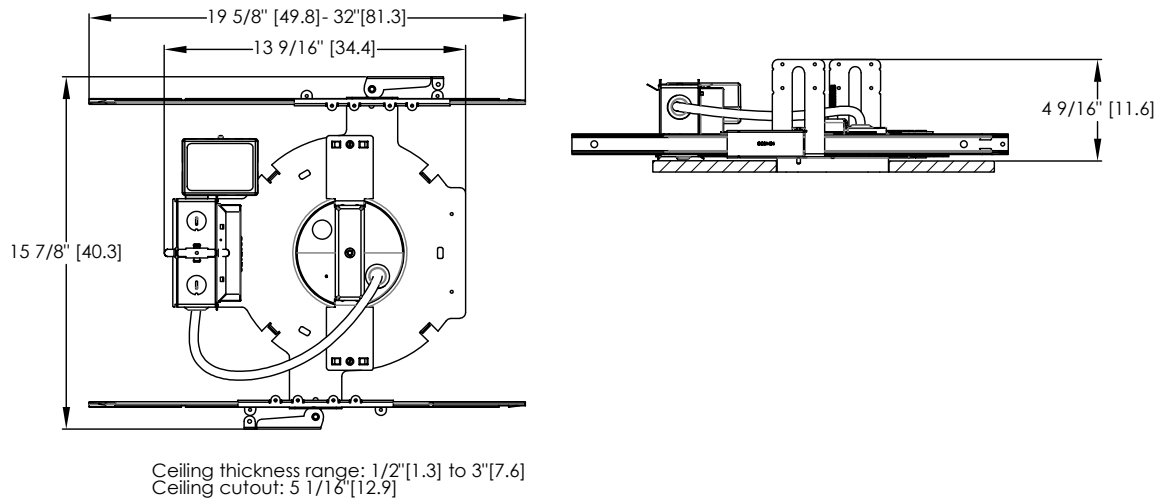
SIDECAR BATTERY OPTION	LUMEN PACKAGES AVAILABLE	L (SIDECAR LENGTH)
E7WCP	750LM AND GREATER EXCEPT AS NOTED BELOW	14"
	6000-8000LM	16"
	5000-8000LM WITH ECOD DRIVER	
E10WCP	1000LM AND GREATER EXCEPT AS NOTED BELOW	14"
	6000-8000LM	16"
	5000-8000LM WITH ECOD DRIVER	
E15WCP	1500LM AND GREATER	16"

E7WCP/E10WCP/E15WCP Sidecar Emergency Battery

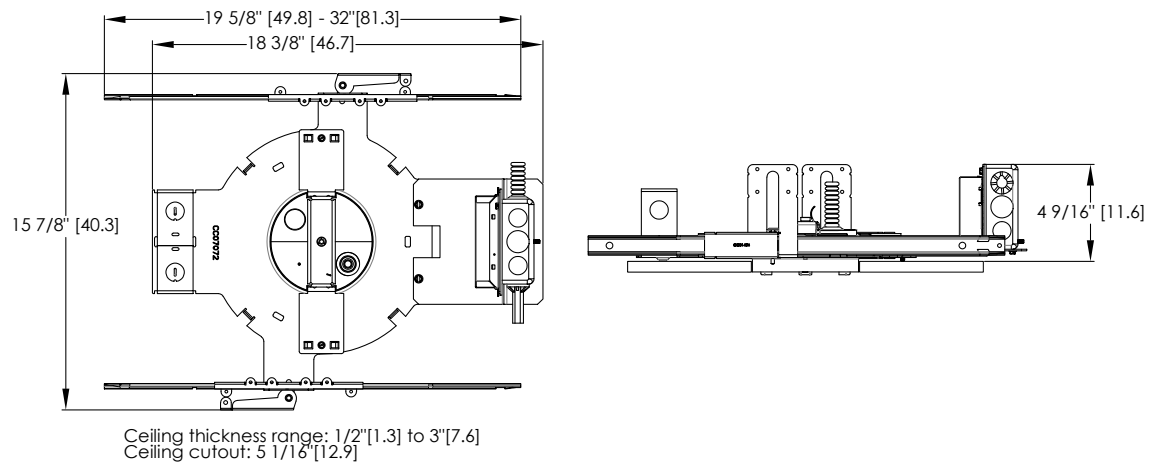


\*Dimensions in inches [centimeters]

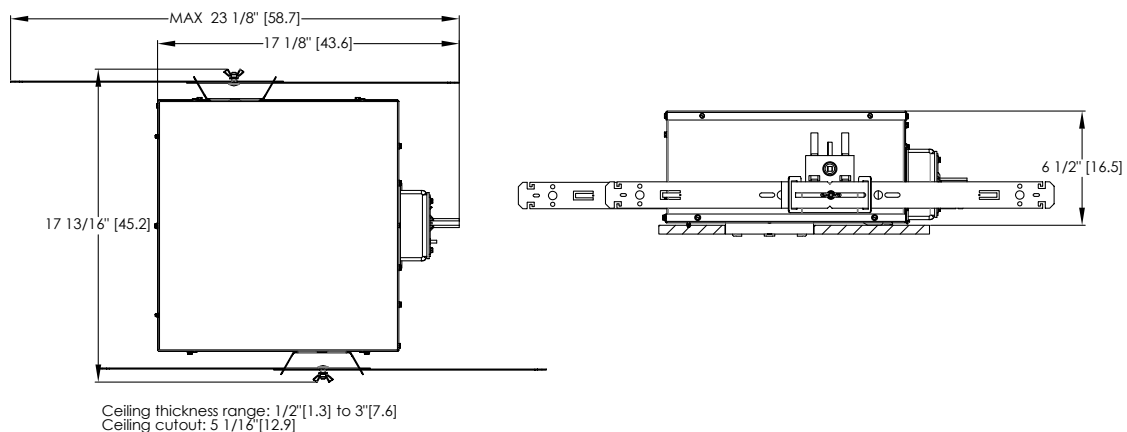
**RGH 2500LM-5000LM and with EDXB up to 4500LM & ECOD up to 4000LM Standard**



**RGH with CP 2500LM-5000LM and for use with EDXB up to 4500LM & ECOD up to 4000LM Standard**

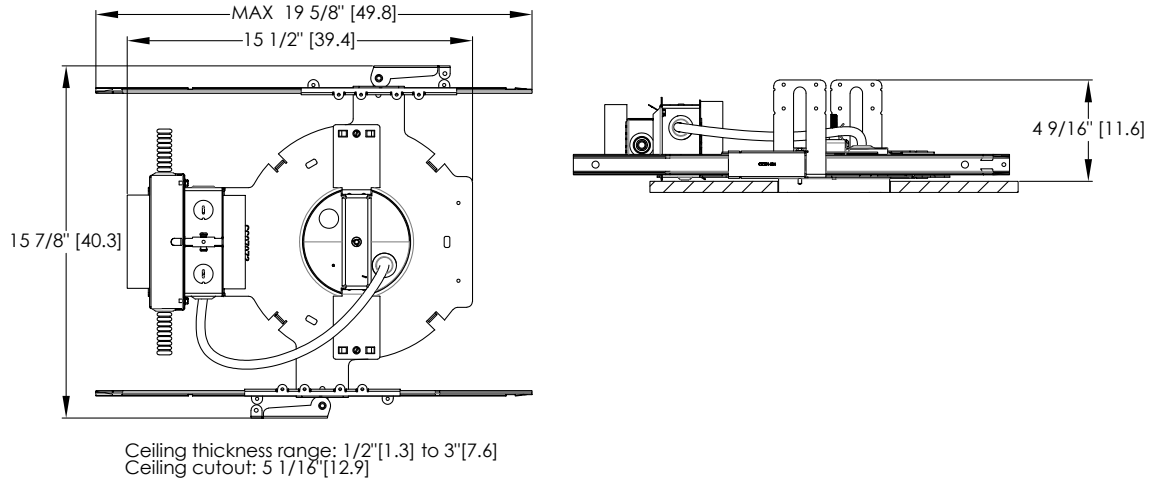


**RGH with Chicago Plenum (CP) for use with nLight Enclosed**

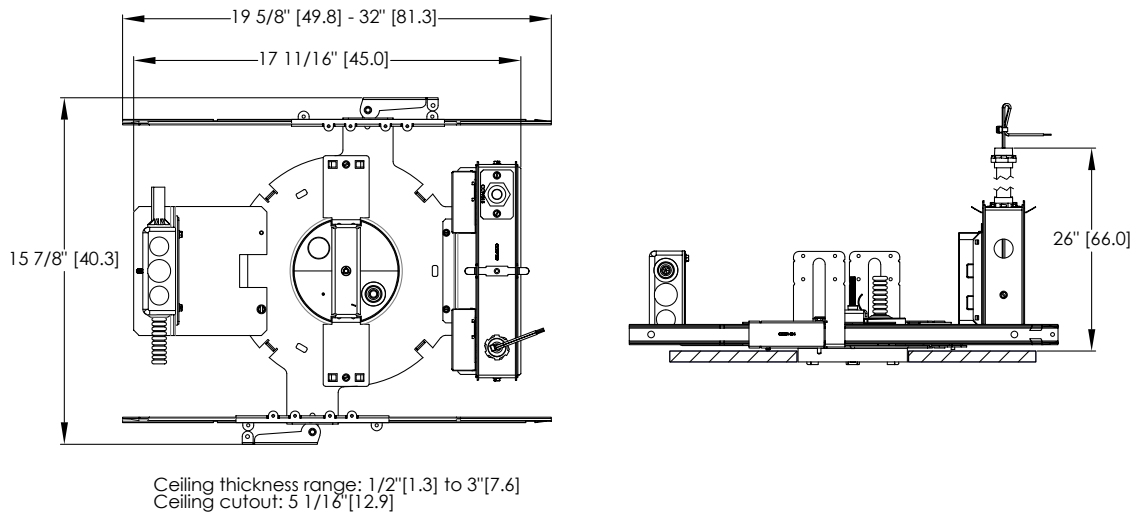


\*Dimensions in inches [centimeters]

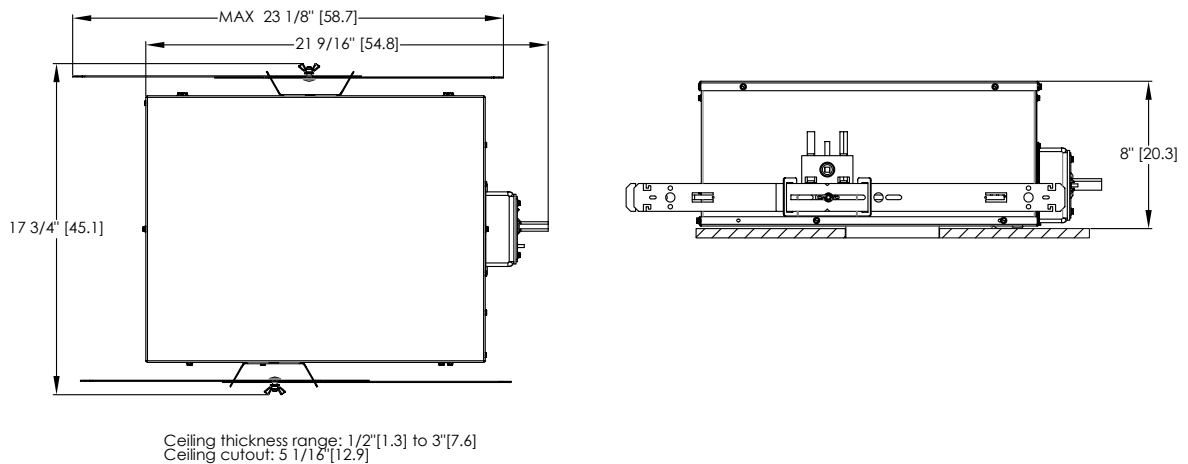
**RGH Double Driver 5000LM+ EDXB & ECOD, 6000LM & 8000LM Standard**



**RGH Double Driver CP Standard**

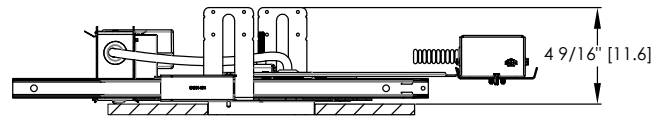
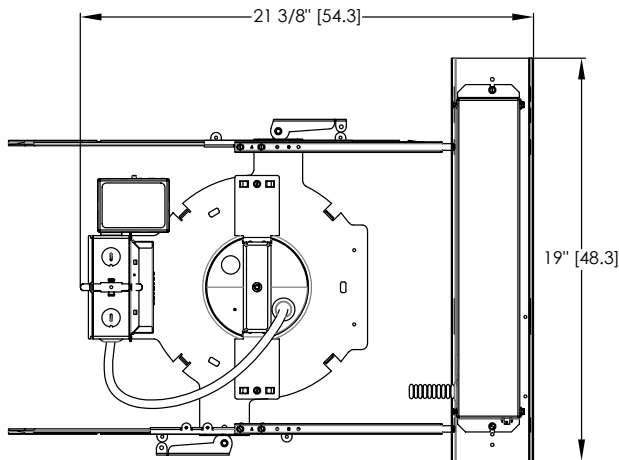


**RGH Double Driver with CP for use with 5000LM+ EDXB & ECOD, 6000LM & 8000LM Enclosed**



\*Dimensions in inches [centimeters]

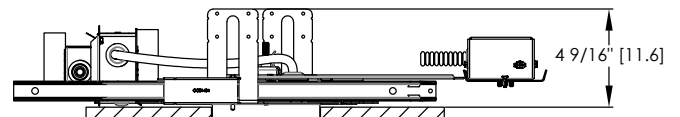
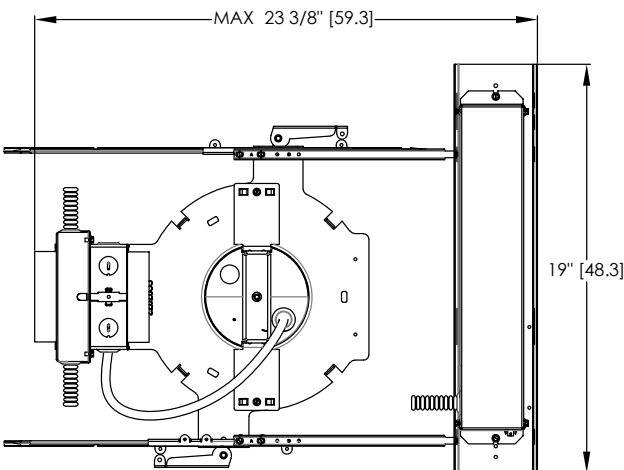
**RGH with Battery Backup (E10WCPR or E10WCP) 2500LM-5000LM and with EDXB up to 4500LM & ECOD up to 4000LM Standard**



With Emergency Battery or GTD option

Minimum plenum height for emergency batteries in non-accessible ceilings: 12 1/2\"[31.8]  
Ceiling thickness range: 1/2\"[1.3] to 3\"[7.6]  
Ceiling cutout: 5 1/16\"[12.9]

**RGH Double Driver with Battery Backup (E10WCPR) for use with 5000LM+ EDXB & ECOD, 6000LM & 8000LM Standard**



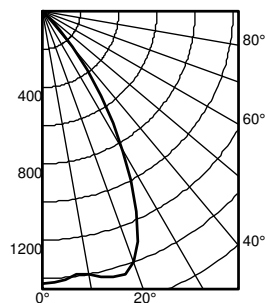
With Emergency Battery or GTD option

Minimum plenum height for emergency batteries in non-accessible ceilings: 12 1/2\"[31.8]  
Ceiling thickness range: 1/2\"[1.3] to 3\"[7.6]  
Ceiling cutout: 5 1/16\"[12.9]

\*Dimensions in inches [centimeters]

CONSULT [WWW.GOTHAMLIGHTING.COM](http://WWW.GOTHAMLIGHTING.COM) FOR ADDITIONAL PHOTOMETRY.

**EV06SC 35/15 AR MWD LS INPUT WATTS: 14.7, DELIVERED LUMENS: 1471LM, LPW= 100, 1.03 S/MH, TEST NO. LTL27783P**

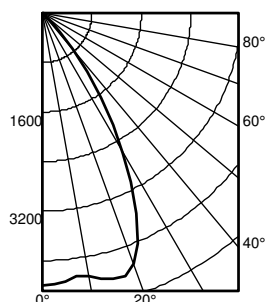


Ave	Lumens	Zone	Lumens	% Lamp
0	1431	0° - 30°	1061.4	72.2
5	1410	0° - 40°	1393.5	94.7
15	1442	0° - 60°	1469.5	99.9
25	1161	0° - 90°	1470.9	100.0
35	540	90° - 180°	0.0	0.0
45	78	0° - 180°	1470.9	*100.0
55	3			
65	1			
75	0			
85	0			
90	0			

\*Efficiency

		50% beam -		10% beam -	
		54.4°		77.9°	
Mounting Height	Initial FC	Diameter	FC	Diameter	FC
	Center Beam				
8.0	47.3	5.7	23.7	8.9	4.7
10.0	25.4	7.7	12.7	12.1	2.5
12.0	15.9	9.8	7.9	15.3	1.6
14.0	10.8	11.8	5.4	18.6	1.1
16.0	7.9	13.9	3.9	21.8	0.8

**EV06SC 35/45 AR MWD LS INPUT WATTS: 47.3, DELIVERED LUMENS: 4532.7LM, LPW= 95.8, 1.03 S/MH, TEST NO. LTL27783P**



Ave	Lumens	Zone	Lumens	% Lamp
0	4411	0° - 30°	3270.7	72.2
5	4346	0° - 40°	4294.2	94.7
15	4443	0° - 60°	4528.3	99.9
25	3578	0° - 90°	4532.7	100.0
35	1665	90° - 180°	0.0	0.0
45	242	0° - 180°	4532.7	*100.0
55	8			
65	2			
75	1			
85	0			
90	0			

\*Efficiency

		50% beam -		10% beam -	
		54.4°		77.9°	
Mounting Height	Initial FC	Diameter	FC	Diameter	FC
	Center Beam				
8.0	145.8	5.7	72.9	8.9	14.6
10.0	78.4	7.7	39.2	12.1	7.8
12.0	48.9	9.8	24.4	15.3	4.9
14.0	33.4	11.8	16.7	18.6	3.3
16.0	24.2	13.9	12.1	21.8	2.4

Lumen Output Multiplier		
CRI	CCT	Multiplier
80	2700K	0.916
	3000K	0.948
	3500K	1
	4000K	1.032
	5000K	1.1
90	2700K	0.748
	3000K	0.8
	3500K	0.838
	4000K	0.845
	5000K	0.945

Reflector Finish Multiplier	
Reflector Finish	Multiplier
LS - Specular	1
LSS - Semi Specular	0.956
WR - White	0.87
LD - Matte Diffuse	0.85
BR - Black	0.73
BZR - Bronze	0.73

Distributions		
Nomenclature	Beam Angle	Field Angle
VND	30	64
ND	44	69
MD	54	82
MWD	67	89
WD	71	92

**nLight® AIR** is the ideal solution for retrofit or new construction spaces where adding communication wiring is cost prohibitive. The integrated nLight AIR rPP20 Power Pack is part of each EVO Luminaire ordered with the NLTAIR option. These individually addressable controls offer the ultimate in flexibility during initial setup and for space repurposing.

#### nLight® AIR Control Accessories

Order as separate catalog number. Visit [nLight AIR](#).

##### Wall Switches

Model Number	
On/Off single pole	rPODB (color) G2
On/Off two pole	rPODB 2P (color) G2
On/Off & raise/lower single pole	rPODB DX (color) G2
On/Off & raise/lower two pole	rPODB 2P DX (color) G2

#### nLight® AIR Control Accessories (cont.)

##### Occupancy Sensors (PIR/dual tech)

Model Number	
Small motion 360°, ceiling	rCMS 9 / rCMS PDT 9
Large motion 360°, ceiling	rCMS 10 / rCMS PDT 10

#### UL924 Sequence of Operation

The below information applies to all nLight AIR devices with an EM option.

- EM devices will remain at their high-end trim and ignore wireless lighting control commands, unless a normal-power-sensed (NPS) broadcast is received at least every 8 seconds.
- Using the CLAIRITY™ mobile app, EM devices must be associated with a group that includes a normal power sensing device to receive NPS broadcasts.
- Only non-emergency rPP20, rLSXR, rSBOR, rSDGR, and nLight AIR luminaires with version 3.4 or later firmware can provide normal power sensing for EM devices. See specification sheets for control devices and luminaires for more information on options that support normal power sensing.

**nLight® Wired** The nLight® solution is a digital networked lighting control system that provides both energy savings and increased user configurability by cost effectively integrating time-based, daylight-based, sensor-based and manual lighting control schemes.

#### nLight® Wired Control Accessories

Order as separate catalog number. Visit [nLight](#).

##### Wall Switches

Model Number	
On/Off single pole	nPODM (color)
On/Off two pole	nPODM 2P (color)
On/Off & raise/lower single pole	nPOD DX (color)
On/Off & raise/lower two pole	nPODM 2P DX (color)
Graphic touchscreen	nPOD GFX (color)

##### Photocell Controls

Dimming	nCM ADCX
---------	----------

#### nLight® Wired Control Accessories (cont.)

##### Occupancy Sensors (PIR/dual tech)

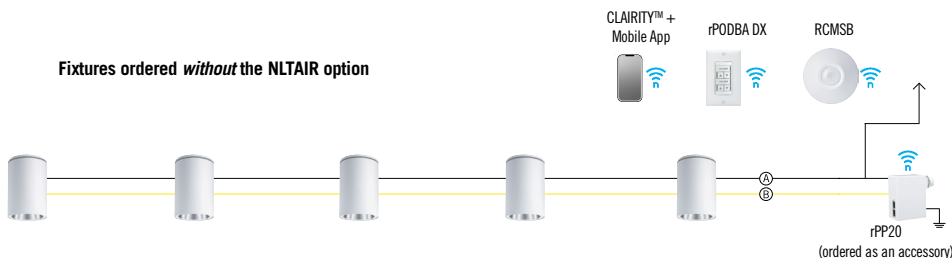
Model Number	
Small motion 360°, ceiling	nCM 9 / nCM PDT 9
Large motion 360°, ceiling	nCM 10 / nCM PDT 10
Wide View	nWV 16 / nWV PDT 16
Wall switch with raise/lower	nWSX LV DX / nWSX PDT LV DX

##### Cat-5 Cables (plenum rated)

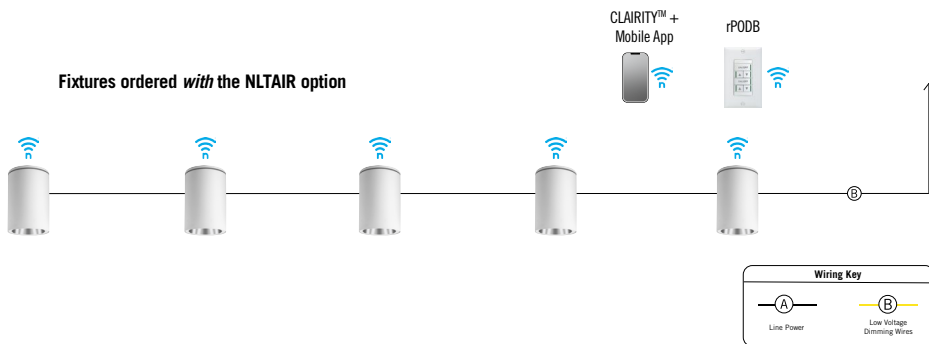
10', CAT5	CAT5 10FT J1
15', CAT5	CAT5 15FT J1

#### Possibilities for nLight® AIR

##### Fixtures ordered *without* the NLTAIR option

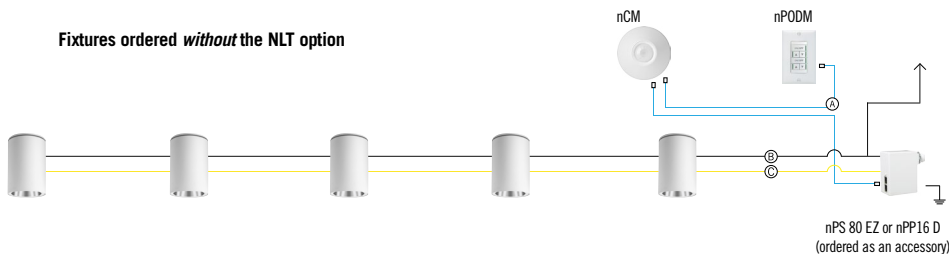


##### Fixtures ordered *with* the NLTAIR option



#### Possibilities for nLight® wired

##### Fixtures ordered *without* the NLT option



##### Fixtures ordered *with* the NLT option

