

General Illumination Shower Downlight with nTune

6"

Feature Set

- Tunable White solution that reproduces natural light patterns and colors, complements materials, and supports productivity.
- Rhythm Range (2700K-6500K) follows the cycle of daylight
- Productivity Range (3000K-5000K) to re-energize and inspire, ideal for collaboration
- WARMDIM® Range (3000K-1800K) for relaxing; warm and comfortable when dimmed
- Non-conductive dead-front trim
- Flush or regressed lensed trim with antimicrobial finish for wipe-down areas
- Rated 65,000 hours (L80) at 25°C ambient temperature
- Dim to Dark 100% - 0.1%

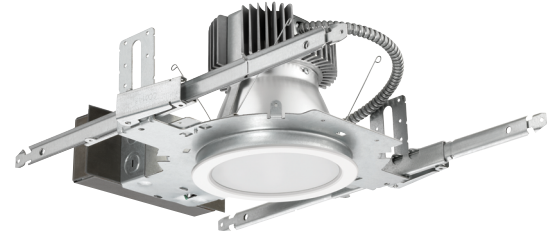
Distribution



Superior Performance

Nominal lumens	750	1000	1500	2000	2500	3000	3500	4000	4500
Delivered	764	1042	1424	1836	2187	2623	3007	3512	3714
Wattage	11	14	19	24	29	35	40	48	50
Efficacy	73	74	76	77	77	76	75	73	74

*80 CRI, 3500K



Coordinated Apertures | Multiple Layers of Light



General Illumination Layer | EVO



High Center Beam Layer | Incito



EVO + Incito — Multiple Layers of Light

Core

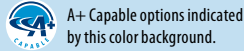


Healthcare



Special Applications





A+ Capable options indicated by this color background.

Luminaire Type:

Catalog Number:

EXAMPLE: EV06SH TUWH PROR/10 DFFAMF SMO MVOLT NLT

Series	Dynamic Feature	Dynamic Range ¹	Nominal lumens values ²	Reflector/Lens Setting/Flange Color	Lens
EV06SH 6" Round Shower Downlight	TUWH Tunable White	PROR Productivity Range (3000K-5000K)	/10 1000 lumens	DFR Regressed lensed white trim	SOL Textured Lens
	WDIM Warm Dimming	RHYR Rhythm Range (2700K-6500K)	/15 1500 lumens	DFF Flush lensed white trim	SMO Smooth Clear Lens
		HALR Halogen Range (3000K-1800K)	/20 2000 lumens	DFRAMF Regressed lensed white trim with antimicrobial finish	
			/25 2500 lumens	DFFAMF Flush lensed white trim with antimicrobial finish	
			/30 3000 lumens		

Voltage	Control Interface Type	Options
MVOLT Multi-Volt	NLT³ nLight nTune interface	SF Single fuse. Specify 120V or 277V.
120 120V	NLTER³ nLight nTune interface with emergency circuit	E10WCPR Emergency battery pack, 10W Constant Power, CA Title 20 compliant with remote test switch
277 277V	ZT 0-10V dimming	BGTD Bodine generator transfer device
	DALI DALI logarithmic dimming to <1%.	
		90CRI High CRI (90+)
		CP⁴ Chicago Plenum

ACCESSORIES — order as separate catalog numbers (shipped separately)

SCA6	Sloped ceiling adapter. Degree of slope must be specified (5D, 10D, 15D, 20D, 25D, 30D). Ex: SCA6 10D. Refer to TECH-190 .
CTA4-8 YK	Ceiling thickness adapter (extends mounting frame to accommodate ceiling thickness up to 5"). Adds 1" to fixture height.
FCS 7TSN XXX	Fresco Lighting Control; XXX = Color. Refer to FRESCO spec sheet for additional options.
nPODM 2P DX CCT XX	nLight 2 Channels, On/off + raise/lower control, CCT, XX = Color
nPODM 4S DX XX	nLight 4 Scene Control, On/off + raise/lower control, XX = Color
nPODM 4S XX	nLight 4 Scene Control, XX = Color

ORDERING NOTES

1. PROR and RHYR available only with TUWH. HALR available only with WDIM.
2. Nominal lumen values when tested at 3500K.
3. Requires power from nLight network bridge or nPS 80.
4. Voltage specific (120V or 277V). Not available with battery pack options.

Optical Assembly

Fully serviceable and upgradeable lensed LED light engine suitable for field maintenance or service from below the ceiling. Unitized optics shall have mechanical attachment of the light engine to the lower reflector for complete optical alignment.

Electrical

The luminaire shall operate from a 50 or 60 Hz ± 3 Hz AC line over a voltage ranging from 120 VAC to 277 VAC. The fluctuations of line voltage shall have no visible effect on the luminous output.

The luminaire shall have a power factor of 90% or greater at all standard operating voltages and full luminaire output.

Sound Rated A+. Driver shall be >80% efficient at full load across all input voltages.

Input wires shall be 18AWG, 300V minimum, solid copper.

Controls

Tunable white nTune™ is an all-digital light color temperature control within an nLight enabled luminaire.

nTune™ allows color temperature settings through the Productivity Range of 3000K to 5000K or Rhythm Range of 2700K to 6500K.

Refer to nLight Programming User's Guide for instructions on customizing your application with SensorView™.

Dimming

The luminaire shall be capable of continuous dimming without perceivable stroboscopic flicker as measured by flicker index (ANSI/IES RP-16-10) over a range of 100 – 0.1% of rated lumen output with a smooth shut off function to step to 0%.

Construction

Luminaire housing shall be constructed of 16-gauge galvanized steel and have preinstalled telescopic mounting bars with maximum 32" and minimum 15" extension and 4" vertical adjustment.

luminaires shall be suitable for installation in ceilings up to 1½" thick. (specify ceiling thickness adapter to extend frame to accommodate ceiling thickness up to 5").

Tool-less adjustments shall be possible after installation.

The assembly and manufacturing process for the luminaire shall be designed to assure all internal components are adequately supported to withstand mechanical shock and vibration.

25°C ambient temperature standard (1/2" clearance on all sides from non-combustible materials in non-IC applications, unless marked spacing noted otherwise).

For use in insulated ceilings, a 3" clearance on all sides from insulation is required (unless marked spacing noted otherwise).

Listings

Fixtures are CSA certified to meet US and Canadian Standards: All fixtures manufactured in strict accordance with the appropriate and current requirements of the "Standards for Safety" to UL, wet location covered ceiling.

Photometrics

LEDs tested to LM-80 standards. Measured by IESNA Standard LM-79-08 in an accredited lab. Lumen output shall not decrease by more than 20% over the minimum operational life of 60,000 hours.

Buy American Act

This product is assembled in the USA and meets the Buy America(n) government procurement requirements under FAR, DFARS and DOT regulations. Please refer to www.acuitybrands.com/buy-american for additional information.

Warranty

5-year limited warranty. Complete warranty terms located at: www.acuitybrands.com/support/customer-support/terms-and-conditions

Note:

Actual performance may differ as a result of end user environment and application.

All values are design or typical values, measured under laboratory conditions at 25 °C.

A+ Capable Luminaire

This item is an A+ capable luminaire, which has been designed and tested to provide consistent color appearance and out-of-the-box control compatibility with simple commissioning.

- All configurations of this luminaire meet the Acuity Brands' specification for chromatic consistency
- This luminaire is part of an A+ Certified solution for nLight® control networks when ordered with drivers marked by a shaded background*
- This luminaire is part of an A+ Certified solution for nLight® control networks, providing advanced control functionality at the luminaire level, when selection includes driver and control options marked by a shaded background*

To learn more about A+, visit www.acuitybrands.com/aplus.

*See ordering tree for details

DFF SMO - Flush Clear									
Nominal Lumens	750	1000	1500	2000	2500	3000	3500	4000	4500
Delivered	764	1042	1424	1836	2187	2623	3007	3512	3714
Wattage	11	14	19	24	29	35	40	48	51
Efficacy	73	74	76	76	77	76	75	73	73

*Lumen output for 80CRI - 3500K

DFF SOL - Flush Textured									
Nominal Lumens	750	1000	1500	2000	2500	3000	3500	4000	4500
Delivered	748	1020	1394	1798	2140	2568	2944	3438	3635
Wattage	11	14	19	24	29	35	40	48	51
Efficacy	71	73	74	74	75	74	73	71	71

*Lumen output for 80CRI - 3500K

DFF SMO - Flush Textured									
Nominal Lumens	750	1000	1500	2000	2500	3000	3500	4000	4500
Delivered	588	802	1095	1413	1682	2018	2314	2702	2857
Wattage	11	14	19	24	29	35	40	48	51
Efficacy	56	57	58	58	59	58	57	56	56

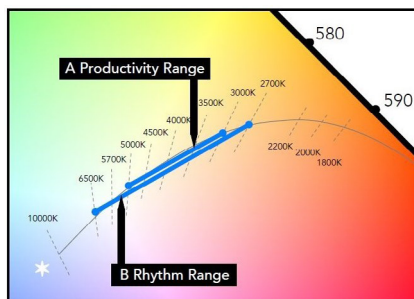
*Lumen output for 80CRI - 3500K

DFR SOL - Regressed Textured									
Nominal Lumens	750	1000	1500	2000	2500	3000	3500	4000	4500
Delivered	567	774	1057	1363	1623	1947	2232	2607	2758
Wattage	11	14	19	24	29	35	40	48	51
Efficacy	54	55	56	56	57	56	55	54	54

*Lumen output for 80CRI - 3500K

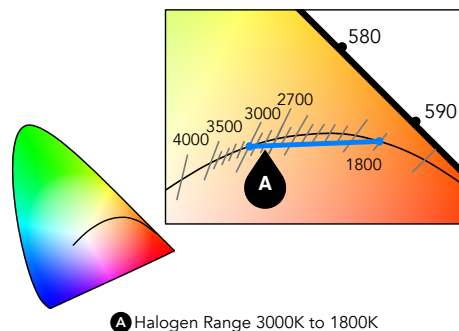
Driver Default Dimming Curve			
Nomenclature	Min Dimming	Driver Dim Curve	Control Dim Curve
ZT	0.1%	Linear	Linear/Logarithmic
DALI	0.1%	Linear	Linear/Logarithmic

MAINSTREAM DYNAMIC TUNABLE WHITE WITH NTUNE TECHNOLOGY



A Productivity Range 3000K to 5000K

B Rhythm Range 2700K to 6500K



A Halogen Range 3000K to 1800K

Tunable white nTune™ is an all digital light color temperature control within an nLight enabled luminaire. This brings tunable white lighting control into the mainstream with repeatable, consistent results in an economical luminaire form and system already familiar to schools. Designers and facility operators are granted the freedom to tie scenes to specific activities or to complement colors or materials within a visual environment. nTune™ allows color temperature settings through the Productivity Range of 3000K to 5000K or Rhythm Range of 2700K to 6500K. Refer to nLight Programming User's Guide for instructions on customizing to your application with SensorView™.

TUNABLE WHITE GPHD

Gamut: One dimensional warm-Cool

Path: Direct 3000K to 5000K (Productivity Range) or 2700K to 6500K (Rhythm Range)

Handle: Two Natural Language Handles: Intensity and CCT

Data: nLight with nTune technology for both handles of control

How to Estimate Delivered Lumens in Emergency Mode

$$\text{Delivered Lumens} = 1.25 \times P \times \text{LPW}$$

P = Output power of emergency driver. P = 10W for PS1055CP

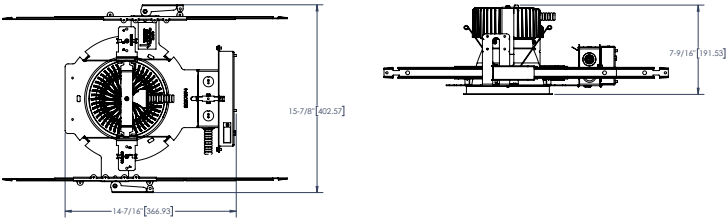
LPW = Lumen per watt rating of the luminaire. This information is available on the ABL luminaire spec sheet.

DIMENSIONAL DATA

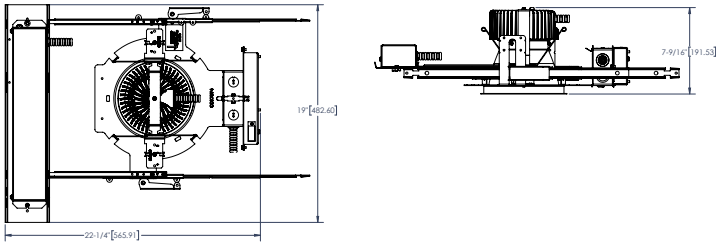
*Dimensions in inches [centimeters]

Aperture: 6 1/4" [15.9]
Ceiling Opening: 7 1/8" [18.1] self-flanged
Overlap Trim: 7 1/2" [19.1]

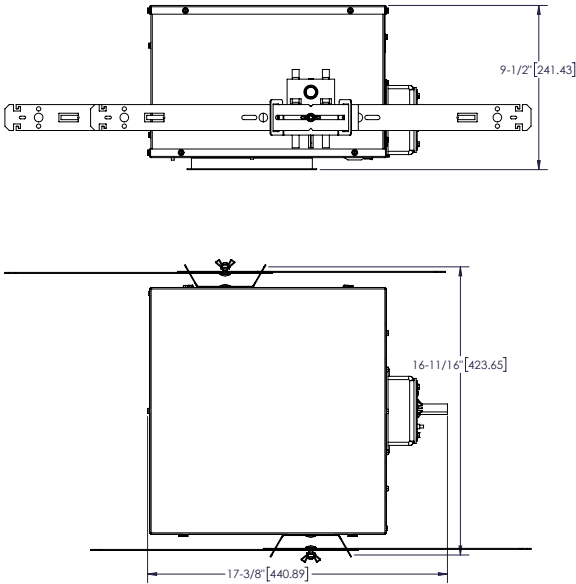
Standard



Battery Pack

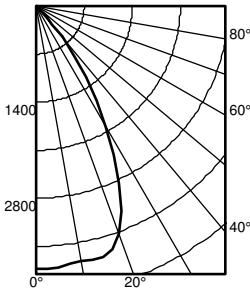


CP Standard



EV06SH TUWH RHYR /45 6DFF SMO CRI80 3500K

INPUT WATTS: 50.9, DELIVERED LUMENS: 3714, LM/W=72.9, 1.0 S/MH, TEST NO. LTL29886P195

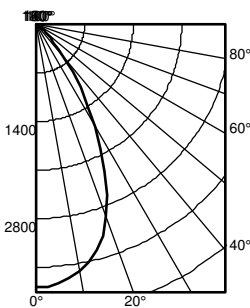


Ave	Lumens	Zone	Lumens	% Lamp	pf	pc	pw	80%			20%			50%		
								50%	30%	10%	50%	30%	10%	50%	30%	10%
0	3837	0° - 30°	2701.6	72.7	0			119	119	119	116	116	116	111	111	111
5	3819	0° - 40°	3486.7	93.9	1			111	108	106	109	106	104	105	103	101
15	3789	0° - 60°	3695.7	99.5	2			103	99	96	101	98	95	98	95	93
25	2847	0° - 90°	3713.6	100.0	3			96	91	87	95	90	87	92	88	85
35	1265	90° - 180°	0.0	0.0	4			90	85	80	89	84	80	87	82	79
45	205	0° - 180°	3713.6	*100.0	5			84	79	74	83	78	74	82	77	73
55	23	*Efficiency			6			79	73	69	78	73	69	77	72	68
65	10				7			74	68	64	74	68	64	72	67	64
75	6				8			70	64	60	70	64	60	68	63	60
85	0				9			66	60	56	66	60	56	65	60	56
90	0				10			63	57	53	62	57	53	61	56	53

Initial FC						50% beam -		10% beam -		
Mounting						52.4°		76.8°		
Height	Center	Beam	Diameter	FC	Diameter	FC	Diameter	FC	Diameter	FC
8.0	126.8		5.4	63.4	8.7	12.7				
10.0	68.2		7.4	34.1	11.9	6.8				
12.0	42.5		9.3	21.3	15.1	4.3				
14.0	29.0		11.3	14.5	18.2	2.9				
16.0	21.1		13.3	10.5	21.4	2.1				

EV06SH TUWH RHYR /45 6DFF SOL CRI80 3500K

INPUT WATTS: 50.9, DELIVERED LUMENS: 3635, LM/W=71.4, 0.90 S/MH, TEST NO. LTL29885P195

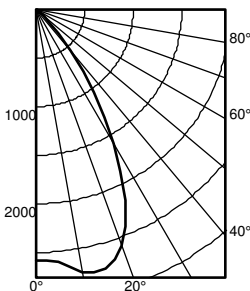


Ave	Lumens	Zone	Lumens	% Lamp	pf	pc	pw	80%			20%			50%		
								50%	30%	10%	50%	30%	10%	50%	30%	10%
0	3796	0° - 30°	2354.5	64.8	0			119	119	119	116	116	116	111	111	111
5	3749	0° - 40°	3051.9	84.0	1			110	107	104	107	105	103	103	101	99
15	3381	0° - 60°	3475.9	95.6	2			101	96	93	99	95	92	96	92	89
25	2344	0° - 90°	3632.5	99.9	3			93	88	83	92	87	83	89	85	81
35	1108	90° - 120°	0.0	0.0	4			87	81	76	85	80	75	83	78	74
45	360	90° - 130°	0.0	0.0	5			81	74	70	80	74	69	78	73	69
55	139	90° - 150°	1.3	0.0	6			75	69	64	74	68	64	73	68	64
65	85	90° - 180°	2.8	0.1	7			71	64	60	70	64	59	69	63	59
75	53	0° - 180°	3635.3	*100.0	8			66	60	56	66	60	55	65	59	55
85	14	*Efficiency			9			62	56	52	62	56	52	61	55	52
90	0				10			59	53	49	59	53	49	58	52	49

Initial FC						50% beam -		10% beam -		
Mounting						47.8°		76.7°		
Height	Center	Beam	Diameter	FC	Diameter	FC	Diameter	FC	Diameter	FC
8.0	125.5		4.9	62.7	8.7	12.5				
10.0	67.5		6.6	33.7	11.9	6.7				
12.0	42.1		8.4	21.0	15.0	4.2				
14.0	28.7		10.2	14.4	18.2	2.9				
16.0	20.8		12.0	10.4	21.4	2.1				

EV06SH TUWH RHYR /45 6DFF SMO CRI80 3500K

INPUT WATTS: 50.9, DELIVERED LUMENS: 2857, LM/W=56.1, 1.1 S/MH, TEST NO. LTL29888P195

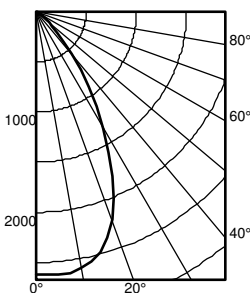


Ave	Lumens	Zone	Lumens	% Lamp	pf	pc	pw	80%			20%			50%		
								50%	30%	10%	50%	30%	10%	50%	30%	10%
0	2588	0° - 30°	1998.2	69.9	0			119	119	119	116	116	116	111	111	111
5	2612	0° - 40°	2647.5	92.7	1			111	108	106	108	106	104	104	103	101
15	2758	0° - 60°	2842.5	99.5	2			103	99	95	101	97	94	98	95	92
25	2170	0° - 90°	2856.8	100.0	3			96	91	87	94	90	86	92	88	85
35	1043	90° - 180°	0.0	0.0	4			89	84	79	88	83	79	86	82	78
45	198	0° - 180°	2856.8	*100.0	5			83	78	73	83	77	73	81	76	72
55	18	*Efficiency			6			78	72	68	77	72	68	76	71	67
65	8				7			73	67	63	73	67	63	71	66	62
75	4				8			69	63	59	68	63	59	67	62	58
85	1				9			65	59	55	64	59	55	63	58	55
90	0				10			61	55	51	61	55	51	60	55	51

Initial FC						50% beam -		10% beam -		
Mounting						55.3°		79.5°		
Height	Center	Beam	Diameter	FC	Diameter	FC	Diameter	FC	Diameter	FC
8.0	85.6		5.8	42.8	9.2	8.6				
10.0	46.0		7.9	23.0	12.5	4.6				
12.0	28.7		10.0	14.3	15.8	2.9				
14.0	19.6		12.1	9.8	19.1	2.0				
16.0	14.2		14.2	7.1	22.5	1.4				

EV06SH TUWH RHYR /45 6DFF SOL CRI80 3500K

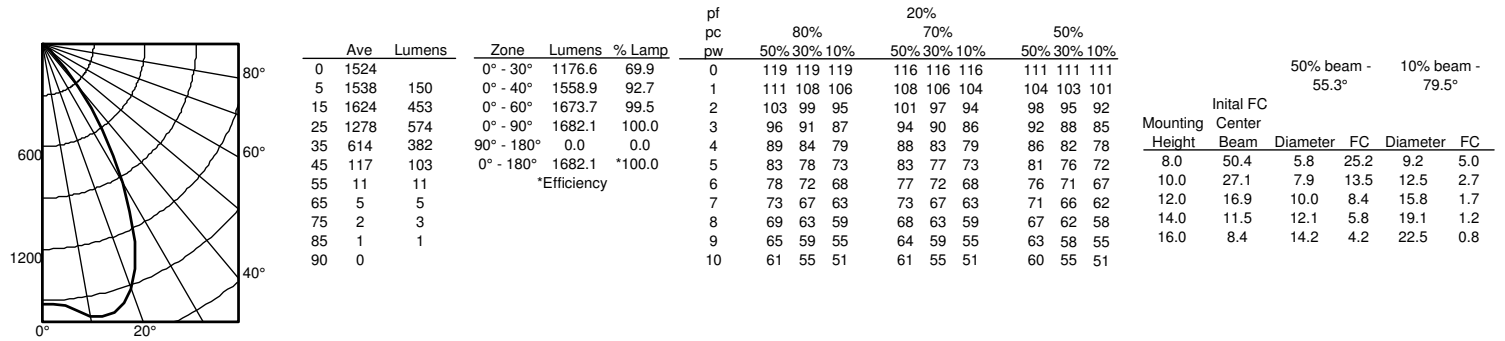
INPUT WATTS: 50.9, DELIVERED LUMENS: 2757, LM/W=54.2, 0.97 S/MH, TEST NO. LTL29887P195



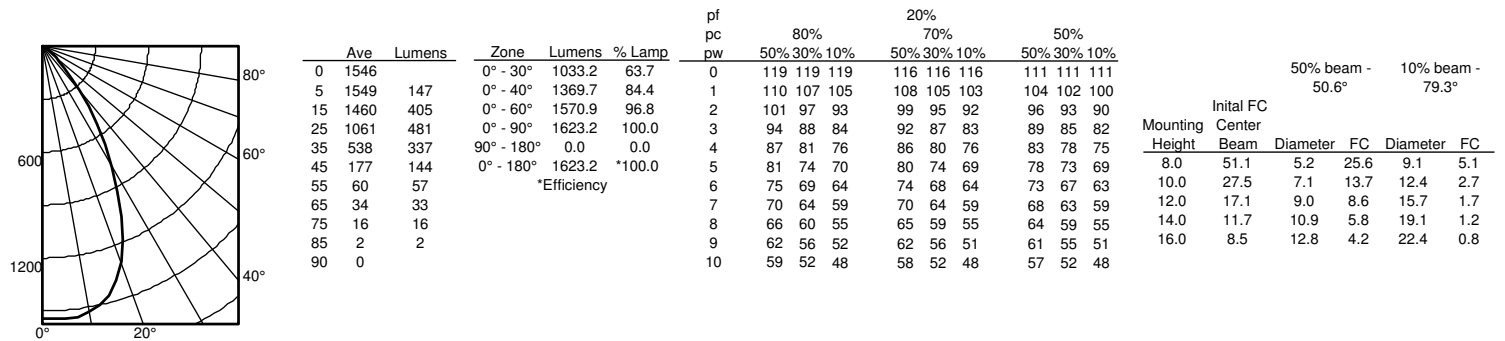
Ave	Lumens	Zone	Lumens	% Lamp	pf	pc	pw	80%			20%			50%		
								50%	30%	10%	50%	30%	10%	50%	30%	10%
0	2626	0° - 30°	1754.7	63.7	0			119	119	119	116	116	116	111	111	111
5	2631	0° - 40°	2326.2	84.4	1			110	107	105	108	105	103	104	102	100
15	2480	0° - 60°	2668.0	96.8	2			101	97	93	99	95	92	96	93	90
25	1801	0° - 90°	2756.6	100.0	3			94	88	84	92	87	83	89	85	82
35	913	90° - 180°	0.0	0.0	4			87	81	76	86	80	76	83	78	75
45	300	0° - 180°	2756.6	*100.0	5			81	74	70	80	74	69	78	73	69
55	102	*Efficiency			6			75	69	64	74	68	64	73	67	63
65	57				7			70	64	59	70	64	59	68	63	59
75	27				8			66	60	55	65	59	55	64	59	55
85	4				9			62	56	52	62	56	51	61	55	51
90	0				10			59	52	48	58	52	48	57	52	48

Initial FC						50% beam -		10% beam -		
Mounting						50.6°		79.3°		
Height	Center	Beam	Diameter	FC	Diameter	FC	Diameter	FC	Diameter	FC
8.0	86.8		5.2	43.4	9.1	8.7				
10.0	46.7		7.1	23.3	12.4	4.7				
12.0	29.1		9.0	14.5	15.7	2.9				
14.0	19.9		10.9	9.9	19.1	2.0				
16.0	14.4		12.8	7.2	22.4	1.4				

EV06SH 35/25 DFR SMO 80CRI INPUT WATTS: 24.7W, DELIVERED LUMENS: 1682LM, LPW = 68, 1.08 S/MH, TEST NO: LTL29888P477



EV06SH 35/25 DFR SOL 80CRI INPUT WATTS: 24.7W, DELIVERED LUMENS: 1623.2LM, LPW = 66.7, 0.97 S/MH, TEST NO: LTL29887P477



nLight® Wired The nLight® solution is a digital networked lighting control system that provides both energy savings and increased user configurability by cost effectively integrating time-based, daylight-based, sensor-based and manual lighting control schemes.

nLight® Wired Control Accessories

Order as separate catalog number. Visit nLight.

Wall Switches

Model Number	
On/Off single pole	nPODM XX
On/Off two pole	nPODM 2P XX
On/Off & raise/lower single pole	nPOD DX XX
On/Off & raise/lower two pole	nPODM 2P DX XX
Graphic touchscreen	nPOD GFX XX

Photocell Controls

Dimming	nCM ADCX
---------	----------

nLight® Wired Control Accessories (cont.)

Occupancy Sensors (PIR/dual tech)

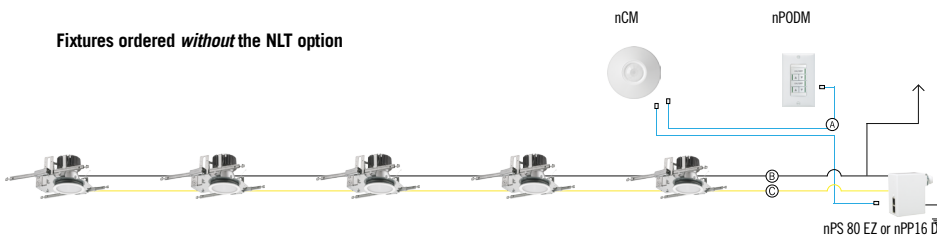
Model Number	
Small motion 360°, ceiling	nCM 9 / nCM PDT 9
Large motion 360°, ceiling	nCM 10 / nCM PDT 10
Wide View	nWV 16 / nWV PDT 16
Wall switch with raise/lower	nWSX LV DX / nWSX PDT LV DX

Cat-5 Cables (plenum rated)

10', CAT5	CAT5 10FT J1
15', CAT5	CAT5 15FT J1

Possibilities for nLight® wired

Fixtures ordered *without* the NLT option



Fixtures ordered *with* the NLT option

