

OVERVIEW

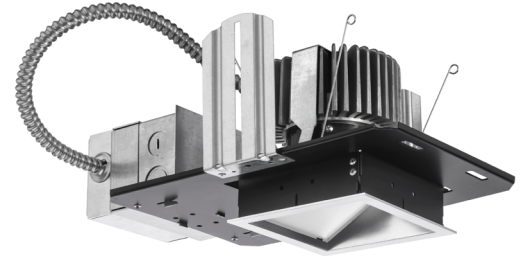
## General Illumination Square Lensed Wallwash with nTune

# 6"

### Feature Set

- Tunable White solution that reproduces natural light patterns and colors, complements materials, and supports productivity.
- Wallwash enables uniformity from floor to ceiling. Smooth, balanced illumination optimized for ceilings of 8' to 12' with recommended spacing of 3' from wall and 3' centers.
- Rhythm Range (2700K-6500K) follows the cycle of daylight
- Productivity Range (3000K-5000K) to re-energize and inspire, ideal for collaboration
- WARMDIM® Range (3000K-1800K) for relaxing; warm and comfortable when dimmed
- Bounding Ray™ Optical Principle design provides 45° cut-off to source and source image
- Rated 65,000 hours (L80) at 25°C ambient temperature
- Dim to Dark 100% - 0.1%

### Distribution



### Superior Performance

Nominal lumens	750	1000	1500	2000	2500	3000	3500	4000	4500
Delivered	732	885	1207	1649	2127	2533	3039	3483	4068
Wattage	9	11	14	19	24	29	34	40	48
Efficacy	81	84	87	88	89	89	89	86	84

\*80 CRI, 3500K

COMPLIMENTARY PRODUCTS

### Coordinated Apertures | Multiple Layers of Light



General Illumination Layer | EVO



High Center Beam Layer | Incito



EVO + Incito — Multiple Layers of Light

### Core



### Healthcare



### Special Applications



A+ Capable options indicated by this color background.

Luminaire Type:

Catalog Number:

**EXAMPLE: EVO6SQLW TUWH PROR/10 AR LSS MVOLT NLT**

Series	Dynamic Feature	Dynamic Range <sup>1</sup>	Nominal lumens values <sup>1</sup>	Reflector/Flange Color	Trim Style
<b>EVO6SQLW</b> 6" Square Lensed Wallwash	<b>TUWH</b> Tunable White <b>WDIM</b> Warm Dimming	<b>PROR</b> Productivity Range (3000K-5000K) <b>RHYR</b> Rhythm Range (2700K-6500K) <b>HALR</b> Halogen Range (3000K-1800K)	<b>/07</b> 750 lumens	<b>AR</b> Clear <b>PR</b> Pewter <b>WTR</b> Wheat <b>GR</b> Gold <b>WR<sup>2</sup></b> White painted <b>BR<sup>2</sup></b> Black painted <b>WRAMF<sup>2</sup></b> White painted anti-microbial finish	<b>(blank)</b> Self-flanged <b>FL</b> Flangeless
			<b>/10</b> 1000 lumens		
			<b>/15</b> 1500 lumens		
			<b>/20</b> 2000 lumens		
			<b>/25</b> 2500 lumens		
			<b>/30</b> 3000 lumens		
			<b>/35</b> 3500 lumens		
			<b>/40</b> 4000 lumens		
			<b>/45</b> 4500 lumens		
			<b>/50</b> 5000 lumens		

Aperture Finish	Voltage	Control Interface Type	Options
<b>LSS</b> Semi-specular	<b>MVOLT</b> <b>120</b> 120V <b>277</b> 277V	<b>NLT<sup>4</sup></b> nLight nTune interface <b>NLTER<sup>4</sup></b> nLight nTune interface with emergency circuit <b>ZT</b> 0-10V dimming <b>DALI</b> DALI logarithmic dimming to <1%.	<b>SF</b> Single fuse <b>TRW<sup>5</sup></b> White painted flange <b>TRBL<sup>6</sup></b> Black painted flange <b>90CRI</b> High CRI (90+) <b>E10WCP</b> Emergency battery pack, 10W Constant Power, CA Title 20 compliant with integral test switch <b>E10WCPR</b> Emergency battery pack, 10W Constant Power, CA Title 20 compliant with remote test switch <b>CP<sup>7</sup></b> Chicago Plenum <b>BGTD</b> Bodine Generator Transfer Device
<b>LD</b> Matte-diffuse			

**ACCESSORIES — order as separate catalog numbers (shipped separately)**

<b>FCS 7TSN XXX</b>	Fresco Lighting Control with DMX and ethernet; XXX = Color. Refer to <a href="#">FRESCO</a> spec sheet for additional options.
<b>nPODM 2P DX CCT XX</b>	nLight 2 Channels, On/off + raise/lower control, CCT, XX = Color. Refer to <a href="#">nLight</a> .
<b>nPODM 4S DX XX</b>	nLight 4 Scene Control, On/off + raise/lower control, XX = Color. Refer to <a href="#">nLight</a> .
<b>nPODM 4S XX</b>	nLight 4 Scene Control, XX = Color. Refer to <a href="#">nLight</a> .

**ORDERING NOTES**

- PROR and RHYR available only with TUWH. HALR available only with WDIM.
- Nominal lumen values when tested at 3500K.
- Not available with aperture finishes.
- Requires power from nLight network bridge or nPS 80.
- For use with different reflector finish only (i.e. AR, PR, WTR, GR options). Not applicable with WR (white reflector) or FL (flangeless) option.
- For use with different reflector finish only (i.e. AR, PR, WTR, GR options). Not applicable with BR (black reflector) or FL (flangeless) option.
- Voltage-specific (120 or 277V). Not available with battery pack options.

**Optical Assembly**

Fully serviceable and upgradeable lensed LED light engine suitable for field maintenance or service from below the ceiling. Unitized optics shall have mechanical attachment of the light engine to the lower reflector for complete optical alignment.

**Electrical**

The luminaire shall operate from a 50 or 60 Hz ±3 Hz AC line over a voltage ranging from 120 VAC to 277 VAC. The fluctuations of line voltage shall have no visible effect on the luminous output.

The luminaire shall have a power factor of 90% or greater at all standard operating voltages and full luminaire output.

Sound Rated A+. Driver shall be >80% efficient at full load across all input voltages.

Input wires shall be 18AWG, 300V minimum, solid copper.

**Controls**

Tunable white nTune™ is an all-digital light color temperature control within an nLight enabled luminaire.

nTune™ allows color temperature settings through the Productivity Range of 3000K to 5000K or Rhythm Range of 2700K to 6500K.

Refer to nLight Programming User's Guide for instructions on customizing your application with SensorView™.

**Dimming**

The luminaire shall be capable of continuous dimming without perceivable stroboscopic flicker as measured by flicker index (ANSI/IES RP-16-10) over a range of 100 – 0.1% of rated lumen output with a smooth shut off function to step to 0%.

**Construction**

Luminaire housing shall be constructed of 16-gauge galvanized steel and have preinstalled telescopic mounting bars with maximum 32" and minimum 15" extension and 4" vertical adjustment.

Luminaires shall be suitable for installation in ceilings up to 1½" thick. (specify ceiling thickness adapter to extend frame to accommodate ceiling thickness up to 5").

Tool-less adjustments shall be possible after installation.

The assembly and manufacturing process for the luminaire shall be designed to assure all internal components are adequately supported to withstand mechanical shock and vibration.

25°C ambient temperature standard (1/2" clearance on all sides from non-combustible materials in non-IC applications, unless marked spacing noted otherwise).

For use in insulated ceilings, a 3" clearance on all sides from insulation is required (unless marked spacing noted otherwise).

**Listings**

Fixtures are CSA certified to meet US and Canadian Standards: All fixtures manufactured in strict accordance with the appropriate and current requirements of the "Standards for Safety" to UL, wet location covered ceiling.

**Photometrics**

LEDs tested to LM-80 standards. Measured by IESNA Standard LM-79-08 in an accredited lab. Lumen output shall not decrease by more than 20% over the minimum operational life of 60,000 hours.

**Buy American Act**

This product is assembled in the USA and meets the Buy America(n) government procurement requirements under FAR, DFARS and DOT regulations.

Please refer to [www.acuitybrands.com/buy-american](http://www.acuitybrands.com/buy-american) for additional information.

**Warranty**

5-year limited warranty. Complete warranty terms located at: [www.acuitybrands.com/support/customer-support/terms-and-conditions](http://www.acuitybrands.com/support/customer-support/terms-and-conditions)

**Note:**

Actual performance may differ as a result of end user environment and application.

All values are design or typical values, measured under laboratory conditions at 25 °C.

**A+ Capable Luminaire**

This item is an A+ capable luminaire, which has been designed and tested to provide consistent color appearance and out-of-the-box control compatibility with simple commissioning.

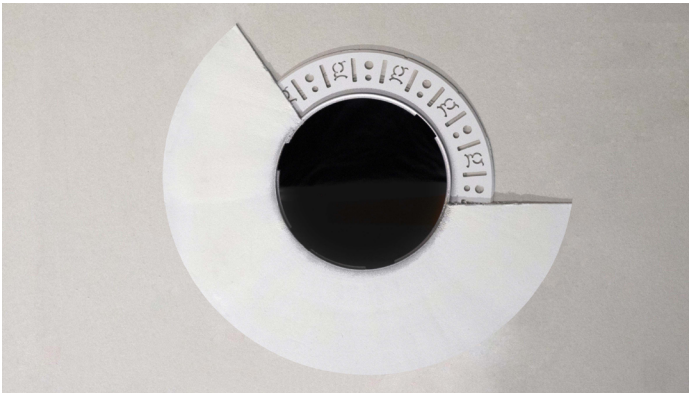
- All configurations of this luminaire meet the Acuity Brands' specification for chromatic consistency
- This luminaire is part of an A+ Certified solution for nLight® control networks when ordered with drivers marked by a shaded background\*
- This luminaire is part of an A+ Certified solution for nLight® control networks, providing advanced control functionality at the luminaire level, when selection includes driver and control options marked by a shaded background\*

To learn more about A+, visit [www.acuitybrands.com/aplus](http://www.acuitybrands.com/aplus).

\*See ordering tree for details



Partially finished mud ring, showing cross-section detail.



An EVO downlight requires only approximately 3" of plaster to finish.



EVO with flangeless trim

### Flangeless Installation

Gotham's flangeless option utilizes a micro-thin polymer mud ring that minimizes the amount of drywall compound required to finish the ceiling. The end result is a virtually undetectable flangeless downlight installation.

The polymer mud ring is installed independent of the of the recessed frame, therefore floating with the ceiling. This innovation minimizes any surface cracks during reflector installation, ceiling movement and any future service to the recessed frame, wiring, electronics, etc.

Driver Default Dimming Curve			
Nomenclature	Min Dimming	Driver Dim Curve	Control Dim Curve
ZT	0.1%	Linear	Linear/Logarithmic
DALI	0.1%	Linear	Linear/Logarithmic

Lumen Output Multiplier - Finish Trim						
Finish	Clear (AR)	Pewter (PR)	Wheat (WTR)	Gold (GR)	White (WR/WRAMF)	Black (BR)
Specular (LS)	1.00	0.88	0.83	0.95	N/A	N/A
Semi-specular (LSS)	0.95	0.84	0.79	0.90	N/A	N/A
Matte-diffuse (LD)	0.85	0.73	0.69	0.80	N/A	N/A
Paint	N/A	N/A	N/A	N/A	0.87	0.73

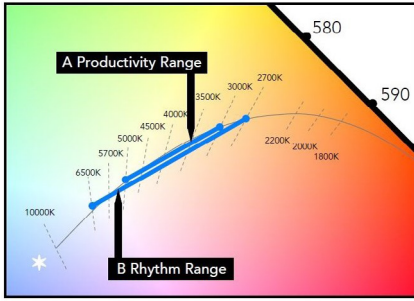
**How to Estimate Delivered Lumens in Emergency Mode**

**Delivered Lumens = 1.25 x P x LPW**

P = Output power of emergency driver. P = 10W for PS1055CP

LPW = Lumen per watt rating of the luminaire. This information is available on the ABL luminaire spec sheet.

MAINSTREAM DYNAMIC TUNABLE WHITE WITH NTUNE TECHNOLOGY



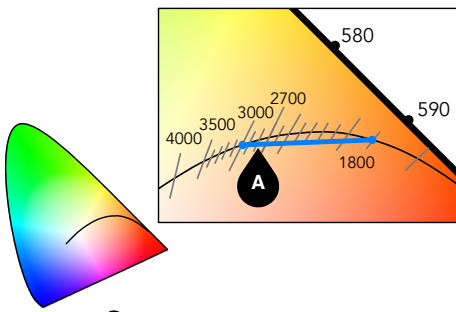
Tunable white nTune™ is an all digital light color temperature control within an nLight enabled luminaire. This brings tunable white lighting control into the mainstream with repeatable, consistent results in an economical luminaire form and system already familiar to schools. Designers and facility operators are granted the freedom to tie scenes to specific activities or to complement colors or materials within a visual environment. nTune™ allows color temperature settings through the Productivity Range of 3000K to 5000K or Rhythm Range of 2700K to 6500K. Refer to nLight Programming User's Guide for instructions on customizing to your application with SensorView™.

TUNABLE WHITE GPHD

**Gamut:** One dimensional warm-Cool  
**Path:** Direct 3000K to 5000K (Productivity Range) or 2700K to 6500K (Rhythm Range)  
**Handle:** Two Natural Language Handles: Intensity and CCT  
**Data:** nLight with nTune technology for both handles of control

A Productivity Range 3000K to 5000K

B Rhythm Range 2700K to 6500K



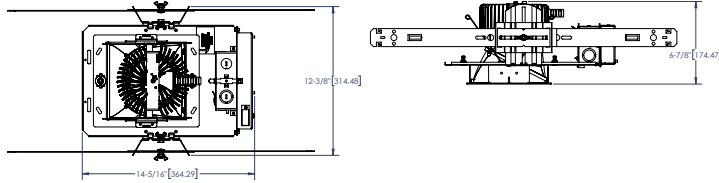
A Halogen Range 3000K to 1800K

\*Dimensions in inches [centimeters]

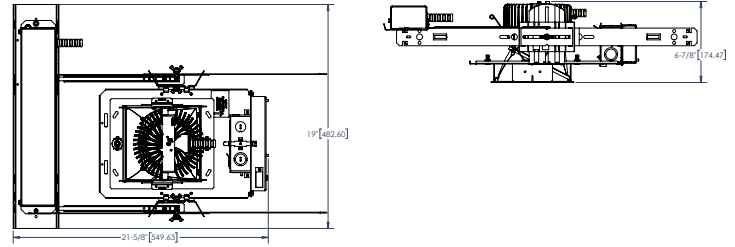
Aperture: 6 1/4" [15.9]      Ceiling Opening: 7 1/8" [18.1] self-flanged  
 Overlap Trim: 7 1/2" [19.1]      7 1/4" [18.4] flangeless

DIMENSIONAL DATA

**250LM-500LM Standard**



**250LM-500LM Battery Pack**

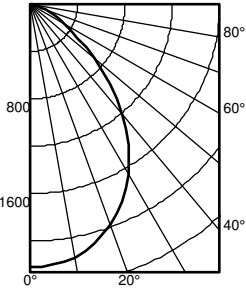




Photometry

**EVO6SQLW TUWH RHYR /45 6AR LS CRI80 2700K**

INPUT WATTS: 47.9, DELIVERED LUMENS: 4045, LM/W=84.4, WALLWASH, TEST NO. 19-102-C05P97

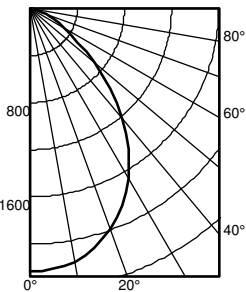


Ave Lumens	Zone Lumens % Lamp	pf pc pw	80%			20% 70%			50%		
			50%	30%	10%	50%	30%	10%	50%	30%	10%
0 2222	0° - 30° 1640.3 40.5	0	119	119	119	116	116	116	111	111	111
5 2209 210	0° - 40° 2540.6 62.8	1	108	104	101	105	102	100	101	99	96
15 2094 588	0° - 60° 3724.2 92.1	2	97	91	87	95	90	86	91	87	84
25 1837 842	0° - 90° 4045.6 100.0	3	87	80	75	86	79	74	83	77	73
35 1448 900	90° - 180° 0.0 0.0	4	79	71	66	77	71	65	75	69	64
45 955 735	0° - 180° 4045.6 *100.0	5	72	64	58	70	63	58	68	62	57
55 493 448	*Efficiency	6	65	58	52	64	57	52	63	56	51
65 219 222		7	60	52	47	59	52	47	58	51	46
75 80 88		8	55	48	42	55	47	42	53	47	42
85 6 12		9	51	44	39	51	43	39	49	43	38
90 0		10	47	40	35	47	40	35	46	40	35

Mounting Height	Initial Center Beam	50% beam - 58.8°		10% beam - 97.4°	
		Diameter	FC	Diameter	FC
8.0	73.5	6.2	36.7	12.5	7.3
10.0	39.5	8.5	19.8	17.1	3.9
12.0	24.6	10.7	12.3	21.6	2.5
14.0	16.8	13.0	8.4	26.2	1.7
16.0	12.2	15.2	6.1	30.7	1.2

**EVO6SQLW TUWH RHYR /45 6AR LS CRI80 3500K**

INPUT WATTS: 47.9, DELIVERED LUMENS: 4068, LM/W=84.9, WALLWASH, TEST NO. 19-102-C05P99

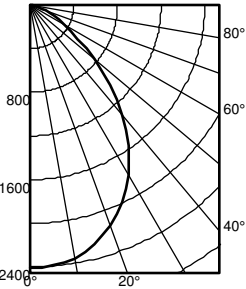


Ave Lumens	Zone Lumens % Lamp	pf pc pw	80%			20% 70%			50%		
			50%	30%	10%	50%	30%	10%	50%	30%	10%
0 2235	0° - 30° 1649.4 40.5	0	119	119	119	116	116	116	111	111	111
5 2222 211	0° - 40° 2554.7 62.8	1	108	104	101	105	102	100	101	99	96
15 2106 592	0° - 60° 3745.0 92.1	2	97	91	87	95	90	86	91	87	84
25 1847 847	0° - 90° 4068.1 100.0	3	87	80	75	86	79	74	83	77	73
35 1456 905	90° - 180° 0.0 0.0	4	79	71	66	77	71	65	75	69	64
45 960 739	0° - 180° 4068.1 *100.0	5	72	64	58	70	63	58	68	62	57
55 496 451	*Efficiency	6	65	58	52	64	57	52	63	56	51
65 220 223		7	60	52	47	59	52	47	58	51	46
75 81 88		8	55	48	42	55	47	42	53	47	42
85 6 12		9	51	44	39	51	43	39	49	43	38
90 0		10	47	40	35	47	40	35	46	40	35

Mounting Height	Initial Center Beam	50% beam - 58.8°		10% beam - 97.4°	
		Diameter	FC	Diameter	FC
8.0	73.9	6.2	36.9	12.5	7.4
10.0	39.7	8.5	19.9	17.1	4.0
12.0	24.8	10.7	12.4	21.6	2.5
14.0	16.9	13.0	8.4	26.2	1.7
16.0	12.3	15.2	6.1	30.7	1.2

**EVO6SQLW TUWH RHYR /45 6AR LS CRI80 6500K**

INPUT WATTS: 47.9, DELIVERED LUMENS: 4390, LM/W=91.6, WALLWASH, TEST NO. 19-102-C05P102



Ave Lumens	Zone Lumens % Lamp	pf pc pw	80%			20% 70%			50%		
			50%	30%	10%	50%	30%	10%	50%	30%	10%
0 2411	0° - 30° 1780.0 40.5	0	119	119	119	116	116	116	111	111	111
5 2398 227	0° - 40° 2757.0 62.8	1	108	104	101	105	102	100	101	99	96
15 2272 639	0° - 60° 4041.4 92.1	2	97	91	87	95	90	86	91	87	84
25 1993 914	0° - 90° 4390.2 100.0	3	87	80	75	86	79	74	83	77	73
35 1572 977	90° - 180° 0.0 0.0	4	79	71	66	77	71	65	75	69	64
45 1036 798	0° - 180° 4390.2 *100.0	5	72	64	58	70	63	58	68	62	57
55 535 487	*Efficiency	6	65	58	52	64	57	52	63	56	51
65 238 241		7	60	52	47	59	52	47	58	51	46
75 87 95		8	55	48	42	55	47	42	53	47	42
85 6 13		9	51	44	39	51	43	39	49	43	38
90 0		10	47	40	35	47	40	35	46	40	35

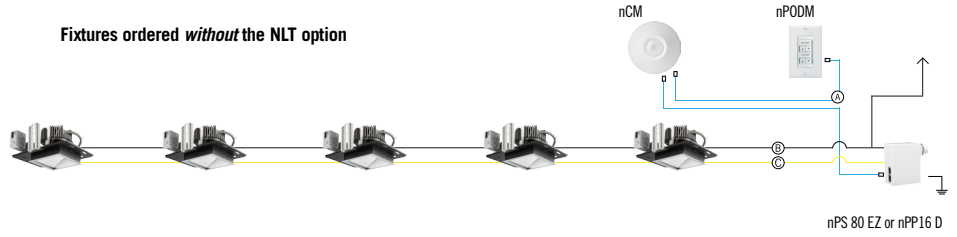
Mounting Height	Initial Center Beam	50% beam - 58.8°		10% beam - 97.4°	
		Diameter	FC	Diameter	FC
8.0	79.7	6.2	39.9	12.5	8.0
10.0	42.9	8.5	21.4	17.1	4.3
12.0	26.7	10.7	13.4	21.6	2.7
14.0	18.2	13.0	9.1	26.2	1.8
16.0	13.2	15.2	6.6	30.7	1.3



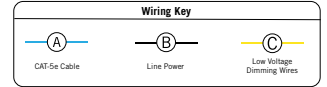
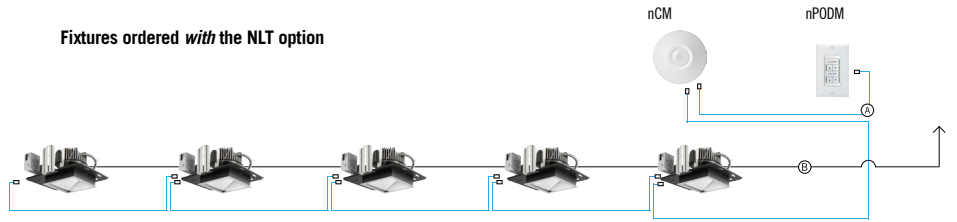
**nLight®** The nLight® solution is a digital networked lighting control system that provides both energy savings and increased user configurability by cost effectively integrating time-based, daylight-based, sensor-based and manual lighting control schemes.

**Possibilities for nLight® wired**

**Fixtures ordered *without* the NLT option**



**Fixtures ordered *with* the NLT option**



**nLight® Wired Control Accessories**

Order as separate catalog number. Visit [nLight](http://nLight.com).

Wall Switches	Model Number
On/Off single pole	nPODM (color)
On/Off two pole	nPODM 2P (color)
On/Off & raise/lower single pole	nPOD DX (color)
On/Off & raise/lower two pole	nPODM 2P DX (color)
Graphic touchscreen	nPOD GFX (color)

Photocell Controls	Model Number
Dimming	nCM ADCX

**nLight® Wired Control Accessories (cont.)**

Occupancy Sensors (PIR/dual tech)	Model Number
Small motion 360°, ceiling	nCM 9 / nCM PDT 9
Large motion 360°, ceiling	nCM 10 / nCM PDT 10
Wide View	nWV 16 / nWV PDT 16
Wall switch with raise/lower	nWSX LV DX / nWSX PDT LV DX

Cat-5 Cables (plenum rated)	Model Number
10', CAT5	CAT5 10FT J1
15', CAT5	CAT5 15FT J1