

OVERVIEW

General Illumination Vandal Resistant Downlight

6"

Feature Set

- Bounding Ray™ optical design
- Unitized optics mechanically attach the light engine to the lower reflector for complete optical alignment.
- 45° cutoff to source and source image
- Fully serviceable and upgradeable lensed LED light engine
- 70% lumen maintenance at 60,000 hours
- 2.5 SDCM; 85 CRI typical, 90+ CRI optional
- Fixtures are wet location, covered ceiling
- Available with 10% dimming, 1% dimming, or dim to dark
- Batwing distribution with feathered edges provides even illumination on horizontal and vertical surfaces

Distribution



Superior Performance

| Nominal Lumens | 250 | 500 | 750 | 1000 | 1500 | 2000 | 2500 | 3000 | 3500 | 4000 | 4500 |
|------------------|-----|-----|-----|------|------|------|------|------|------|------|------|
| Delivered Lumens | 215 | 430 | 645 | 863 | 1281 | 1742 | 2203 | 2672 | 3076 | 3497 | 3937 |
| Wattage | 3.4 | 6.2 | 8.2 | 9.6 | 14.7 | 19.7 | 24.7 | 29.5 | 33.8 | 39.0 | 47.3 |
| Lumens per Watt | 0.0 | 0.0 | 0.0 | 89.9 | 87.1 | 88.4 | 89.2 | 90.6 | 91.0 | 89.7 | 83.2 |



COMPLIMENTARY PRODUCTS

Coordinated Apertures | Multiple Layers of Light



General Illumination Layer | EVO



High Center Beam Layer | Incito



EVO + Incito — Multiple Layers of Light

Core



Healthcare



Special Applications



ORDERING INFORMATION

Luminaire Type:

Catalog Number:

EXAMPLE: EV06VR 35/10 AR MWD LSS MVOLT EZ1 DNA

| Series | Color Temperature | Nominal Lumen Values | Reflector & Flange Color | Finish | Distribution |
|--------|-------------------|----------------------|--------------------------|--|----------------------------|
| EV06VR | 27/ 2700 K | 02 250 lumens | AR Clear | LSS Semi-specular | VND Very Narrow (0.5 s/mh) |
| | 30/ 3000 K | 05 500 lumens | PR Pewter | LD Matte-diffuse | ND Narrow (0.7 s/mh) |
| | 35/ 3500 K | 07 750 lumens | WTR Wheat | LS Specular | MD Medium (0.9 s/mh) |
| | 40/ 4000 K | 10 1000 lumens | GR Gold | | MWD Medium Wide (1.0 s/mh) |
| | 50/ 5000 K | 15 1500 lumens | WR ¹ White | | WD Wide (1.2 s/mh) |
| | | | 20 2000 lumens | BR ¹ Black WRAMF ¹ White Anti-microbial | |

| Lens Type | Voltage | Driver ⁵ | Control Interface |
|--|--------------------|--|--|
| CGL 1/8" clear glass lens | MVOLT | GZ10 0-10V driver dims to 10% | NLT ⁷ nLight [®] dimming pack |
| FOL 1/8" tempered flush opal glass lens | 120 | GZ1 0-10V driver dims to 1% | NLTER ^{3,7,10} nLight [®] dimming pack emergency circuit |
| CVX 3/16" clear convex glass lens | 277 | EZ10 eldoLED 0-10V ECOdrive. Linear dimming to 10% min. | NLTAIR2 ¹³ nLight [®] AIR enabled |
| PCL ² 3/16" clear polycarbonate lenses | 347 ^{3,4} | EZ1 eldoLED 0-10V ECOdrive. Linear dimming to 1% min. | NLTAIRER2 ^{3,10,13} nLight [®] AIR enabled emergency |
| PPC ² 1/8" prismatic polycarbonate lenses | | EZB eldoLED 0-10V SOLOdrive. Logarithmic dimming to <1%. | EXA1 XPoint Wireless, eldoLED driver. Linear dimming to 1% |
| | | EDAB ⁶ eldoLED SOLOdrive DALI. Logarithmic dimming to <1%. | EXAB XPoint Wireless, eldoLED driver. Logarithmic dimming to dark |
| | | EDXB ⁶ eldoLED POWERdrive DMX with RDM (remote device management). Square Law dimming to <1%. Includes termination resistor. Refer to DMXR Manual. Minimum 1000 lumens. | |
| | | ECOD ⁸ Lutron Ecosystem digital Hi-Lume 1% soft-on, fade to black. Max: 4000LM. | |

| Options | Architectural Colors |
|--|---|
| SF Single fuse. Specify 120V or 277V. | Architectural Colors - Powder Paint ¹⁵ |
| TRW ⁹ White painted flange | DWHG Textured White (Standard) |
| TRBL ⁹ Black painted flange | DDB Dark Bronze |
| ELR Emergency battery pack, 10W, with remote test switch | DBL Black |
| ELRSD Emergency battery pack, 10W, with self-diagnostics, remote test switch | DWH Gloss White |
| E10WCPR Emergency battery pack, 10W Constant Power, CA Title 20 compliant with remote test switch | DMB Medium Bronze |
| N80 ¹¹ nLight [®] Lumen Compensation | DNA Natural Aluminum |
| BGTD Bodine generator transfer device. Specify 120V or 277V. | |
| 90CRI High CRI (90+) | |
| CP ¹² Chicago plenum. Specify 120V or 277V for 5000lm and above. | |
| PCU ¹⁴ 3/16" clear polycarbonate lens underlay (roomside) | |
| RRL RELOC [®] -ready luminaire connectors enable a simple and consistent factory installed option across all ABL luminaire brands. Refer to RRL for complete nomenclature | |

ACCESSORIES — order as separate catalog numbers (shipped separately)

ISD BC 0-10V wallbox dimmer. Refer to ISD-BC.

ORDERING NOTES

- Not available with finishes.
- Provided standard with clear polycarbonate underlay (2 lenses total).
- Not available with emergency battery pack options.
- Supplied with factory installed step down transformer.
- Refer to [TECH-240](#) for compatible dimmers.
- Not available with nLight[®] and XPoint options.
- Specify voltage.
- For use with different reflector finish only (i.e. AR, PR, WTR, GR options). Not applicable with White Reflector or FL option.
- For use with different reflector finish only (i.e. AR, PR, WTR, GR options). Not applicable with Black Reflector or FL option.
- ER for use with generator supply power. Will require an emergency hot feed and normal hot feed.
- Fixture begins at 80% light level. Must be specified with NTL or NLTER. Only available with EZ10 and EZ1 drivers.
- ELR not available. CP - 3000 lumen max. CP and ECOD - 4000 lumen max.
- Not available DALI or DMX drivers. Not available with CP or N80 options. Not recommended for metal ceiling installations.
- Not available with CVX, PCL or PPC lens.
- Additional architectural colors available; see www.lithonia.com/archcolors.

Optical Assembly

Fully serviceable and upgradeable lensed LED light engine suitable for field maintenance or service from below the ceiling. Optical design is a Bounding Ray™ design with 45° cutoff to source and source image. Top-down flash characteristic for superior glare control. Unitized optics shall have mechanical attachment of the light engine to the lower reflector for complete optical alignment. Marine-grade die-cast aluminum bezel, low copper alloy (<1% copper) Stainless steel Torx® T20 tamper-resistant screws One-piece closed-cell silicone gaskets

Electrical

The luminaire shall operate from a 50 or 60 Hz ±3 Hz AC line over a voltage ranging from 120 VAC to 277 VAC. The fluctuations of line voltage shall have no visible effect on the luminous output. The luminaire shall have a power factor of 90% or greater at all standard operating voltages and full luminaire output. Sound Rated A+. Driver shall be >80% efficient at full load across all input voltages. Input wires shall be 18AWG, 300V minimum, solid copper.

Controls

Luminaire shall be equipped with interface for nLight wired or wireless network with integral power supply as per specification.

Dimming

The luminaire shall be capable of continuous dimming without perceivable stroboscopic flicker as measured by flicker index (ANSI/IES RP-16-10) over a range of 100 – 10%, 100 – 1.0% or 100 – 0.1% of rated lumen output with a smooth shut off function to step to 0%. eldoLED LED drivers shall conform to IEEE P1789 standards. Alternatively, manufacturers must demonstrate conformance with product literature and testing which demonstrates this performance. Systems that do not meet IEEE P1789 will not be considered. Driver is inaudible in 24dB environment, and stable when input voltage conditions fluctuate over what is typically experienced in a commercial environment.

Construction

Luminaire housing shall be constructed of 16-gauge galvanized steel and have preinstalled telescopic mounting bars with maximum 32” and minimum 15” extension and 4” vertical adjustment. Luminaires shall be suitable for installation in ceilings up to 1½” thick. Tool-less adjustments shall be possible after installation. 25°C ambient temperature standard (1/2” clearance on all sides unless marked spacing noted otherwise).

Listings

Fixtures are CSA certified to meet US and Canadian Standards: All fixtures manufactured in strict accordance with the appropriate and current requirements of the “Standards for Safety” to UL, wet location covered ceiling. IP55 rating (below the mounting surface) standard; IP65 rating with use of silicone at installation. Refer to TECH-200 for ingress protection ratings.

Photometrics

LEDs tested to LM-80 standards. Measured by IESNA Standard LM-79-08 in an accredited lab. Lumen output shall not decrease by more than 30% over the minimum operational life of 60,000 hours. Color appearance from luminaire to luminaire of the same type and in all configurations, shall be consistent both initially and at 60,000 hours and operate within a tolerance of <2.5 MacAdam ellipse as defined by a point at the intersection of the CCT line and the black body locus line in CIE chromaticity space.

Government Procurement

BAA - Buy America(n) Act: Product qualifies as a domestic end product under the Buy American Act as implemented in the FAR and DFARS. Product also qualifies as manufactured in the United States under DOT Buy America regulations
BABA - Build America Buy America: Product qualifies as produced in the United States under the definitions of the Build America, Buy America Act
Please refer to www.acuitybrands.com/buy-american for additional information

Warranty

5-year limited warranty. This is the only warranty provided and no other statements in this specification sheet create any warranty of any kind. All other express and implied warranties are disclaimed. Complete warranty terms located at: www.acuitybrands.com/support/warranty/terms-and-conditions

Note:

Actual performance may differ as a result of end user environment and application. All values are design or typical values, measured under laboratory conditions at 25 °C.

A+ Capable Luminaire

This item is an A+ capable luminaire, which has been designed and tested to provided consistent color appearance and out-of-the-box control capability with simple commissioning when used with Acuity Brands controls products. All configurations of this luminaire are calibrated and tested meet the Acuity Brands' specification for chromatic consistency - including color rendering, color fidelity and color temperature tolerance around standard CIE chromaticity coordinates. To learn more about A+, visit www.acuitybrands.com/aplus.

| EVO - eldoLED Driver Default Dimming Curve | | | |
|--|-------------|------------------|--------------------|
| Nomenclature | Min Dimming | Driver Dim Curve | Control Dim Curve |
| EZ10 | 10% | Linear | Linear/Logarithmic |
| EZ1 | 1% | Linear | Linear/Logarithmic |
| EXA1 | 1% | Linear | Linear/Logarithmic |
| EZB | <1% | Logarithmic | Linear |
| EDAB | <1% | Logarithmic | Linear |
| EXAB | <1% | Logarithmic | Linear |
| EDXB | <1% | Square | Linear |

| Lumen Output Multiplier | | |
|-------------------------|-------|------------|
| CRI | CCT | Multiplier |
| 80 | 2700K | 0.96 |
| | 300K | 1.00 |
| | 3500K | 1.00 |
| | 4000K | 1.01 |
| 90 | 5000K | 1.07 |
| | 2700K | 0.80 |
| | 300K | 0.83 |
| | 3500K | 0.85 |
| | 4000K | 0.87 |
| | 5000K | 0.91 |

| Control Provided (note: 347V/UVOLT versions provided with 347 option selected) | | | | | |
|--|--------------------------|-------------|----------------|----------------|-------------------|
| Driver | | NLT | NLTER | NLTAIR2 | NLTAIRER2 |
| GZ10 | 0-10V driver dims to 10% | nPP16 D EFP | nPP16 D ER EFP | RPP20 D 24V G2 | RPP20 D 24V ER G2 |
| GZ1 | 0-10V driver dims to 1% | nPP16 D EFP | nPP16 D ER EFP | RPP20 D 24V G2 | RPP20 D 24V ER G2 |
| EZ10 | eldoLED 0-10V ECOdrive | nPS 80 EZ | nPS 80 EZ ER | RPP20 D 24V G2 | RPP20 D 24V ER G2 |
| EZ1 | eldoLED 0-10V ECOdrive | nPS 80 EZ | nPS 80 EZ ER | RPP20 D 24V G2 | RPP20 D 24V ER G2 |
| EZB | eldoLED 0-10V SOL0drive | nPS 80 EZ | nPS 80 EZ ER | RPP20 D 24V G2 | RPP20 D 24V ER G2 |

| Reflector Finish Multiplier | |
|-----------------------------|------------|
| Reflector Finish | Multiplier |
| LS - Specular | 1 |
| LSS - Semi Specular | 0.956 |
| WR - White | 0.87 |
| LD - Matte Diffuse | 0.85 |
| BR - Black | 0.73 |

How to Estimate Delivered Lumens in Emergency Mode

Delivered Lumens = 1.25 x P x LPW

P = Output power of emergency driver. P = 10W for PS1055CP

LPW = Lumen per watt rating of the luminaire. This information is available on the ABL luminaire spec sheet.

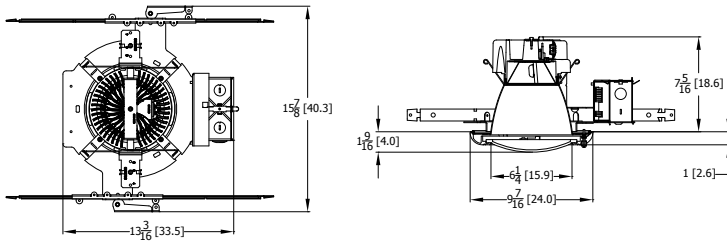
| Distributions | | |
|---------------|------------|-------------|
| Nomenclature | Beam Angle | Field Angle |
| VND | 30 | 64 |
| ND | 44 | 69 |
| MD | 54 | 82 |
| MWD | 67 | 89 |
| WD | 71 | 92 |

DIMENSIONAL DATA

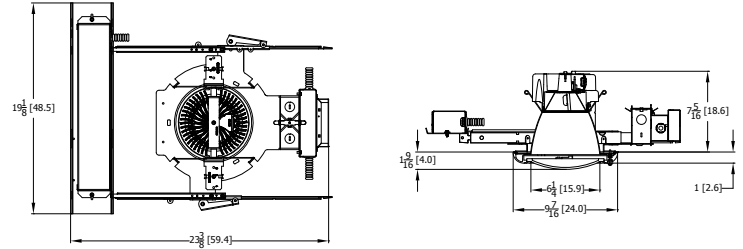
*Dimensions in inches [centimeters]

Aperture: 6 1/4" [15.9] Ceiling Opening: 7 1/8" [18.1] self-flanged
 Overlap Trim: 7 1/2" [19.1]

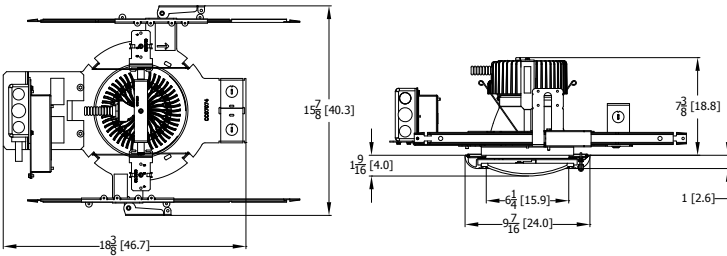
Standard



Battery Pack



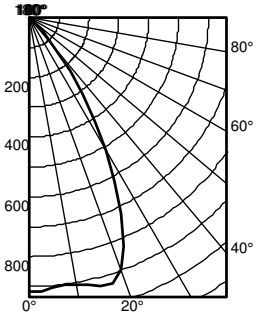
CP Open Frame



Photometry

EV06VR 35/10 AR LS CGL

INPUT WATTS: 9.6, DELIVERED LUMENS: 909LM, LPW = 94.7, 1.01 S/MH, TEST NO. ISF 19805P195

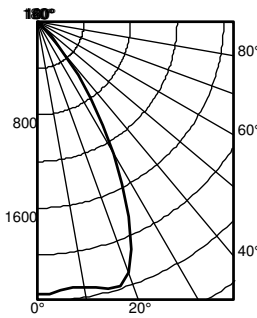


| Ave Lumens | Zone | Lumens | % Lamp | pf pc pw | 80% | | | 20% 70% | | | 50% | | |
|------------|------------|--------|-------------|----------|-----|-----|-----|---------|-----|-----|-----|-----|-----|
| | | | | | 50% | 30% | 10% | 50% | 30% | 10% | 50% | 30% | 10% |
| 0 | 0° - 30° | 673.8 | 74.1 | 0 | 119 | 119 | 119 | 116 | 116 | 116 | 111 | 111 | 111 |
| 5 | 0° - 40° | 868.5 | 95.5 | 1 | 111 | 108 | 106 | 109 | 107 | 105 | 105 | 103 | 101 |
| 15 | 0° - 60° | 906.2 | 99.7 | 2 | 103 | 99 | 96 | 102 | 98 | 95 | 98 | 95 | 93 |
| 25 | 0° - 90° | 909.0 | 100.0 | 3 | 97 | 92 | 88 | 95 | 91 | 87 | 93 | 89 | 86 |
| 35 | 90° - 120° | 0.0 | 0.0 | 4 | 90 | 85 | 81 | 89 | 84 | 80 | 87 | 83 | 79 |
| 45 | 90° - 130° | 0.0 | 0.0 | 5 | 85 | 79 | 75 | 84 | 78 | 74 | 82 | 77 | 74 |
| 55 | 90° - 150° | 0.0 | 0.0 | 6 | 80 | 74 | 69 | 79 | 73 | 69 | 77 | 72 | 69 |
| 65 | 90° - 180° | 0.0 | 0.0 | 7 | 75 | 69 | 65 | 74 | 69 | 65 | 73 | 68 | 64 |
| 75 | 0° - 180° | 909.0 | *100.0 | 8 | 70 | 65 | 61 | 70 | 64 | 60 | 69 | 64 | 60 |
| 85 | | | *Efficiency | 9 | 67 | 61 | 57 | 66 | 60 | 57 | 65 | 60 | 56 |
| 90 | | | | 10 | 63 | 57 | 53 | 62 | 57 | 53 | 62 | 57 | 53 |

| Mounting Height | Initial FC Center | | 50% beam - 53.6° | | 10% beam - 76.8° | |
|-----------------|-------------------|----------|------------------|----------|------------------|----------|
| | Beam | Diameter | FC | Diameter | FC | Diameter |
| 8.0 | 30.4 | 5.6 | 15.2 | 8.7 | 3.0 | |
| 10.0 | 16.3 | 7.6 | 8.2 | 11.9 | 1.6 | |
| 12.0 | 10.2 | 9.6 | 5.1 | 15.1 | 1.0 | |
| 14.0 | 6.9 | 11.6 | 3.5 | 18.2 | 0.7 | |
| 16.0 | 5.0 | 13.6 | 2.5 | 21.4 | 0.5 | |

EV06VR 35/25 AR LS CGL

INPUT WATTS: 24.7, DELIVERED LUMENS: 2319.7LM, LPW = 94, 1.01 S/MH, TEST NO. ISF 19805P231

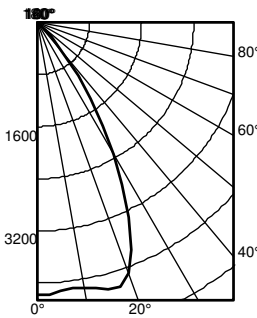


| Ave Lumens | Zone | Lumens | % Lamp | pf pc pw | 80% | | | 20% 70% | | | 50% | | |
|------------|------------|--------|-------------|----------|-----|-----|-----|---------|-----|-----|-----|-----|-----|
| | | | | | 50% | 30% | 10% | 50% | 30% | 10% | 50% | 30% | 10% |
| 0 | 0° - 30° | 1719.6 | 74.1 | 0 | 119 | 119 | 119 | 116 | 116 | 116 | 111 | 111 | 111 |
| 5 | 0° - 40° | 2216.2 | 95.5 | 1 | 111 | 108 | 106 | 109 | 107 | 105 | 105 | 103 | 101 |
| 15 | 0° - 60° | 2312.5 | 99.7 | 2 | 103 | 99 | 96 | 102 | 98 | 95 | 98 | 95 | 93 |
| 25 | 0° - 90° | 2319.7 | 100.0 | 3 | 97 | 92 | 88 | 95 | 91 | 87 | 93 | 89 | 86 |
| 35 | 90° - 120° | 0.0 | 0.0 | 4 | 90 | 85 | 81 | 89 | 84 | 80 | 87 | 83 | 79 |
| 45 | 90° - 130° | 0.0 | 0.0 | 5 | 85 | 79 | 75 | 84 | 78 | 74 | 82 | 77 | 74 |
| 55 | 90° - 150° | 0.0 | 0.0 | 6 | 80 | 74 | 69 | 79 | 73 | 69 | 77 | 72 | 69 |
| 65 | 90° - 180° | 0.0 | 0.0 | 7 | 75 | 69 | 65 | 74 | 69 | 65 | 73 | 68 | 64 |
| 75 | 0° - 180° | 2319.7 | *100.0 | 8 | 70 | 65 | 61 | 70 | 64 | 60 | 69 | 64 | 60 |
| 85 | | | *Efficiency | 9 | 67 | 61 | 57 | 66 | 60 | 57 | 65 | 60 | 56 |
| 90 | | | | 10 | 63 | 57 | 53 | 62 | 57 | 53 | 62 | 57 | 53 |

| Mounting Height | Initial FC Center | | 50% beam - 53.6° | | 10% beam - 76.8° | |
|-----------------|-------------------|----------|------------------|----------|------------------|----------|
| | Beam | Diameter | FC | Diameter | FC | Diameter |
| 8.0 | 77.5 | 5.6 | 38.7 | 8.7 | 7.7 | |
| 10.0 | 41.7 | 7.6 | 20.8 | 11.9 | 4.2 | |
| 12.0 | 26.0 | 9.6 | 13.0 | 15.1 | 2.6 | |
| 14.0 | 17.7 | 11.6 | 8.9 | 18.2 | 1.8 | |
| 16.0 | 12.9 | 13.6 | 6.4 | 21.4 | 1.3 | |

EV06VR 35/25 AR LS CGL

INPUT WATTS: 47.3, DELIVERED LUMENS: 4145LM, LPW= 87.6, 1.01 S/MH, TEST NO. ISF 19805P279



| Ave Lumens | Zone | Lumens | % Lamp | pf pc pw | 80% | | | 20% 70% | | | 50% | | |
|------------|------------|--------|-------------|----------|-----|-----|-----|---------|-----|-----|-----|-----|-----|
| | | | | | 50% | 30% | 10% | 50% | 30% | 10% | 50% | 30% | 10% |
| 0 | 0° - 30° | 3072.6 | 74.1 | 0 | 119 | 119 | 119 | 116 | 116 | 116 | 111 | 111 | 111 |
| 5 | 0° - 40° | 3960.0 | 95.5 | 1 | 111 | 108 | 106 | 109 | 107 | 105 | 105 | 103 | 101 |
| 15 | 0° - 60° | 4132.0 | 99.7 | 2 | 103 | 99 | 96 | 102 | 98 | 95 | 98 | 95 | 93 |
| 25 | 0° - 90° | 4144.8 | 100.0 | 3 | 97 | 92 | 88 | 95 | 91 | 87 | 93 | 89 | 86 |
| 35 | 90° - 120° | 0.0 | 0.0 | 4 | 90 | 85 | 81 | 89 | 84 | 80 | 87 | 83 | 79 |
| 45 | 90° - 130° | 0.0 | 0.0 | 5 | 85 | 79 | 75 | 84 | 78 | 74 | 82 | 77 | 74 |
| 55 | 90° - 150° | 0.0 | 0.0 | 6 | 80 | 74 | 69 | 79 | 73 | 69 | 77 | 72 | 69 |
| 65 | 90° - 180° | 0.1 | 0.0 | 7 | 75 | 69 | 65 | 74 | 69 | 65 | 73 | 68 | 64 |
| 75 | 0° - 180° | 4144.9 | *100.0 | 8 | 70 | 65 | 61 | 70 | 64 | 60 | 69 | 64 | 60 |
| 85 | | | *Efficiency | 9 | 67 | 61 | 57 | 66 | 60 | 57 | 65 | 60 | 56 |
| 90 | | | | 10 | 63 | 57 | 53 | 62 | 57 | 53 | 62 | 57 | 53 |

| Mounting Height | Initial FC Center | | 50% beam - 53.6° | | 10% beam - 76.8° | |
|-----------------|-------------------|----------|------------------|----------|------------------|----------|
| | Beam | Diameter | FC | Diameter | FC | Diameter |
| 8.0 | 138.4 | 5.6 | 69.2 | 8.7 | 13.8 | |
| 10.0 | 74.5 | 7.6 | 37.2 | 11.9 | 7.4 | |
| 12.0 | 46.4 | 9.6 | 23.2 | 15.1 | 4.6 | |
| 14.0 | 31.7 | 11.6 | 15.8 | 18.2 | 3.2 | |
| 16.0 | 23.0 | 13.6 | 11.5 | 21.4 | 2.3 | |

nLight® AIR is the ideal solution for retrofit or new construction spaces where adding communication wiring is cost prohibitive. The integrated nLight AIR rPP20 Power Pack is part of each EVO Luminaire ordered with the NLTAIR option. These individually addressable controls offer the ultimate in flexibility during initial setup and for space repurposing.

nLight® AIR Control Accessories

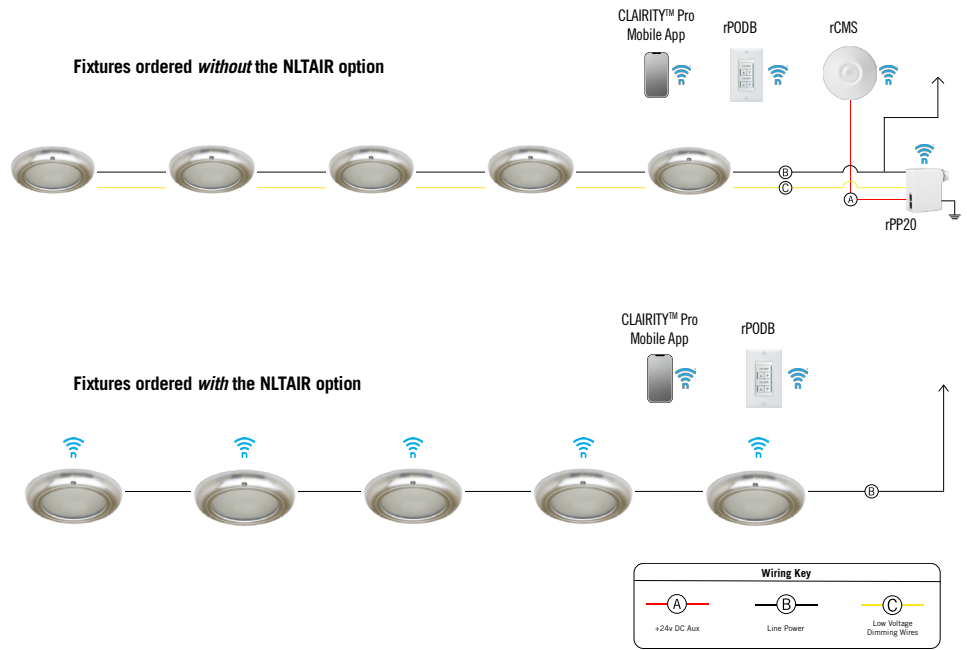
Order as separate catalog number. Visit [nLight AIR](#).

| Wall Switches | Model Number |
|----------------------------------|------------------------|
| On/Off single pole | rPODB (color) G2 |
| On/Off two pole | rPODB 2P (color) G2 |
| On/Off & raise/lower single pole | rPODB DX (color) G2 |
| On/Off & raise/lower two pole | rPODB 2P DX (color) G2 |

nLight® AIR Control Accessories (cont.)

| Occupancy Sensors (PIR/dual tech) | Model Number |
|-----------------------------------|-----------------------|
| Small motion 360°, ceiling | rCMS 9 / rCMS PDT 9 |
| Large motion 360°, ceiling | rCMS 10 / rCMS PDT 10 |

Possibilities for nLight® AIR



nLight® The nLight® solution is a digital networked lighting control system that provides both energy savings and increased user configurability by cost effectively integrating time-based, daylight-based, sensor-based and manual lighting control schemes.

nLight® Wired Control Accessories

Order as separate catalog number. Visit [nLight](#).

| Wall Switches | Model Number |
|----------------------------------|---------------------|
| On/Off single pole | nPODM (color) |
| On/Off two pole | nPODM 2P (color) |
| On/Off & raise/lower single pole | nPOD DX (color) |
| On/Off & raise/lower two pole | nPODM 2P DX (color) |
| Graphic touchscreen | nPOD GFX (color) |

| Photocell Controls | Model Number |
|--------------------|--------------|
| Dimming | nCM ADCX |

nLight® Wired Control Accessories (cont.)

| Occupancy Sensors (PIR/dual tech) | Model Number |
|-----------------------------------|-----------------------------|
| Small motion 360°, ceiling | nCM 9 / nCM PDT 9 |
| Large motion 360°, ceiling | nCM 10 / nCM PDT 10 |
| Wide View | nWV 16 / nWV PDT 16 |
| Wall switch with raise/lower | nWSX LV DX / nWSX PDT LV DX |

| Cat-5 Cables (plenum rated) | Model Number |
|-----------------------------|--------------|
| 10', CAT5 | CAT5 10FT J1 |
| 15', CAT5 | CAT5 15FT J1 |

Possibilities for nLight® wired

