

OVERVIEW

High Center Beam Round Bevel Lensed Wall Wash Downlight

2"



Feature Set

- Superior optical control maintains a smooth, uniform distribution from ceiling to floor.
- Driver and LED light engine fully serviceable from below ceiling
- 70% lumen maintenance at 60,000 hours
- 2.5 SDCM; 80 CRI typical, 90+ CRI optional
- Fixtures are wet location, covered ceiling
- Can be paired with complimentary bevel downlight and bevel recessed adjustable luminaires

Distribution



Superior Performance

| Nominal lumens | 250 | 500 | 750 | 1000 | 1500 |
|----------------|-----|-----|-----|------|------|
| Delivered      | 214 | 455 | 697 | 955  | 1431 |
| Wattage        | 3.1 | 5.6 | 8.7 | 12.0 | 19.8 |
| Efficacy       | 69  | 81  | 80  | 79   | 72   |

\*Based on 3500K 80CRI WR

Coordinated Apertures | Multiple Layers of Light



General Illumination Layer | EVO



High Center Beam Layer | Incito



EVO + Incito — Multiple Layers of Light

Core




Healthcare



Special Applications



COMPLIMENTARY PRODUCTS

 A+ Capable options indicated by this color background.

Luminaire Type:

Catalog Number:

**EXAMPLE: IC02BEVLW 35/10 WR MVOLT UGZ**

| Series   | Color Temperature | Lumens         | Reflector Color         | Flange Type          | Voltage           |
|--|-------------------|----------------|-------------------------|----------------------|-------------------|
| IC02BEVLW<br>Incito 2in Round<br>Bevel Lensed<br>Wall Wash | 27/ 2700 K        | 02 250 lumens  | WR White painted        | (blank) Self-flanged | MVOLT 120V - 277V |
|  | 30/ 3000 K        | 05 500 lumens  | BR Black                | FL Flangeless        | 120 120V          |
|  | 35/ 3500 K        | 07 750 lumens  | BZR Dark Bronze painted |                      | 277 277V          |
|  | 40/ 4000 K        | 10 1000 lumens |                         |                      |                   |
|  | 50/ 5000 K        | 15 1500 lumens |                         |                      |                   |

| Driver  | Control Interface <sup>3</sup>  | Options  |
|---|---|--|
| UGZ <sup>2</sup> Universal dimming to 1% (0-10V, 120V TRIAC or ELV) | (blank)<br>NLT nLight® dimming pack.<br>NLTER <sup>4</sup> nLight® dimming pack for fixtures on emergency circuit<br>NLTAIR2 nLight® AIR dimming pack.<br>NLTAIRER2 <sup>4</sup> nLight® AIR dimming pack for fixtures on emergency circuit<br>NLTAIREM2 nLight® AIR dimming pack for fixtures on emergency circuit | 90CRI <sup>1</sup> High CRI (90+)<br>NCH <sup>5</sup> Structural reinforcement pan<br>ICAT <sup>6</sup> IC/Airtight housing construction<br>CP <sup>6</sup> Chicago Plenum<br>HAO High ambient (40°C)<br>N80 <sup>9</sup> nLight Lumen Compensation<br>TRW <sup>7</sup> White painted flange<br>TRBL <sup>8</sup> Black painted flange |

**ACCESSORIES — order as separate catalog numbers (shipped separately)**

|                  |  |
|------------------|--|
| IC020PTC XxD     | Additional optics for field installation. Replace "XX" with beam angle.                          |
| IC020PTC KIT     | Kit including a field interchangeable optic for each of the 13 preset beam distribution patterns |
| HS258            | 2-5/8" Hole saw  |
| HS234FL          | Hole saw for flangeless trim option  |
| SDT 347/120 75VA | 347V/120V, 75VA step down transformer. Must be remote mounted.                                   |

**ORDERING NOTES**

- 5000K CCT not available with 90CRI
- Refer to [Tech 240](#) for compatible dimmers.
- Field installed. Access required to location of remote mounted device
- "ER for use with generator supply power. Will require an emergency hot feed and normal hot feed."
- NCH is required for T-grid ceilings or where code requires.
- Not available with 1500lm
- For use with different reflector finish only (i.e. AR, PR, WTR, GR options). Not available with WR (White Reflector). Not available with FL.
- For use with different reflector finish only (i.e. AR, PR, WTR, GR options). Not available with BR (Black Reflector). Not available with FL.
- Requires NLT or NLTER.

**Optical and Trim Assembly**

Fully serviceable and upgradeable lensed LED light engine suitable for field maintenance or service from above or below the ceiling. Flangeless trim option includes proprietary Gotham mud ring enabling seamless integration into drywall applications. Mud ring ships separately. Superior 100% Virgin-silicone refractive optic, enables maximum dimensional stability and optical transmission with no discoloration over life. Field inter-changeable optics.

**Electrical**

The luminaire shall operate from a 50 or 60 Hz ±3 Hz AC line over a voltage ranging from 120 VAC to 277 VAC. Support 347V via remote-mounted stepdown transformer. The fluctuations of line voltage shall have no visible effect on the luminous output. The luminaire shall have a power factor of 90% or greater at all standard operating voltages and full luminaire output. Sound Rated A+. Driver shall be >80% efficient at full load across all input voltages. Input wires shall be 18AWG, 300V minimum solid copper.

**Controls**

Luminaire shall be equipped with interface for nLight wired or nLight AIR networks with integral power supply as per specification.

**Dimming**

The luminaire shall be capable of continuous dimming without perceivable stroboscopic flicker as measured by flicker index (ANSI/IES RP-16-10) over a range of 100 – 1.0% of rated lumen output with a smooth shut off function to step to 0%. Driver is inaudible in 24dB environment, and stable when input voltage conditions fluctuate over what is typically experienced in a commercial environment.

**Construction**

Light engine and driver are accessible from below ceiling. Several additional mounting options available including a structural reinforcement pan, Chicago plenum, and Type IC. Anodized extruded aluminum wiring compartment with hinged access. With two 1/2" trade-sized knockouts rated for 90°C. Accommodates between 3/8" to 2-3/4"-thick ceilings.

**Listings**

Fixtures are UL Certified to meet US and Canadian Standards: All fixtures manufactured in strict accordance with the appropriate and current requirements of the "Standards for Safety" to UL, wet location covered ceiling. IC rated with ICAT option. Fixtures with ICAT option are compatible with spray foam insulation with an R-value of 4.3 per inch or less.

**Photometrics**

LEDs tested to LM-80 standards. Measured by IESNA Standard LM-79-08 in an accredited lab. Lumen output shall not decrease by more than 30% over the minimum operational life of 60,000 hours. Color appearance from luminaire to luminaire of the same type and in all configurations, shall be consistent both initially and at 6,000 hours and operate with in a tolerance of <2.5 MacAdam ellipse as defined by the center of the quadrangles defined in ANSI C78.377-2015.

**Government Procurement**

BAA - Buy America(n) Act: Product qualifies as a domestic end product under the Buy American Act as implemented in the FAR and DFARS. Product also qualifies as manufactured in the United States under DOT Buy America regulations  
 BABA - Build America Buy America: Product qualifies as produced in the United States under the definitions of the Build America, Buy America Act  
 Please refer to [www.acuitybrands.com/buy-american](http://www.acuitybrands.com/buy-american) for additional information

**Warranty**

5-year limited warranty. This is the only warranty provided and no other statements in this specification sheet create any warranty of any kind. All other express and implied warranties are disclaimed. Complete warranty terms located at: [www.acuitybrands.com/support/warranty/terms-and-conditions](http://www.acuitybrands.com/support/warranty/terms-and-conditions)

**Note:**

Actual performance may differ as a result of end user environment and application. All values are design or typical values, measured under laboratory conditions at 25 °C.

**A+ Capable Luminaire**

This item is an A+ capable luminaire, which has been designed and tested to provide consistent color appearance and out-of-the-box control compatibility with simple commissioning.

- All configurations of this luminaire meet the Acuity Brands' specification for chromatic consistency
- This luminaire is part of an A+ Certified solution for nLight® control networks when ordered with drivers marked by a shaded background\*
- This luminaire is part of an A+ Certified solution for nLight® control networks, providing advanced control functionality at the luminaire level, when selection includes driver and control options marked by a shaded background\*

To learn more about A+, visit [www.acuitybrands.com/aplus](http://www.acuitybrands.com/aplus).

\*See ordering tree for details

| Lumen Output Multiplier |       |            |
|-------------------------|-------|------------|
| CRI                     | CCT   | Multiplier |
| 80                      | 2700K | 0.910      |
|                         | 3000K | 0.946      |
|                         | 3500K | 1.000      |
|                         | 4000K | 1.027      |
|                         | 5000K | 1.054      |
| 90                      | 2700K | 0.784      |
|                         | 3000K | 0.847      |
|                         | 3500K | 0.874      |
|                         | 4000K | 0.946      |

| Driver       |                          | Control Provided |                |                |                   |                   |
|--------------|--------------------------|------------------|----------------|----------------|-------------------|-------------------|
| Nomenclature | Description              | NLT              | NLTER          | NLTAIR2        | NLTAIREM2         | NLTAIRER2         |
| UGZ          | 0-10V driver dims to 10% | nPP16 D EFP      | nPP16 D ER EFP | RPP20 D 24V G2 | RPP20 D 24V EM G2 | RPP20 D 24V ER G2 |

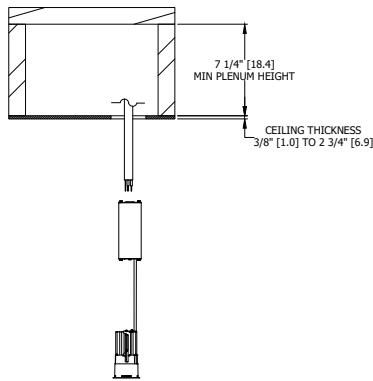
| Marked Spacing in Inches 25°C Ambient |                            |                                       |                     |
|---------------------------------------|----------------------------|---------------------------------------|---------------------|
| Lumen Package                         | Fixed Center to Center MIN | Fixture Center to Building Member MIN | Space Above Fixture |
| 1500 (HAO)                            | 18                         | 9                                     | 3                   |

DIMENSIONAL DATA

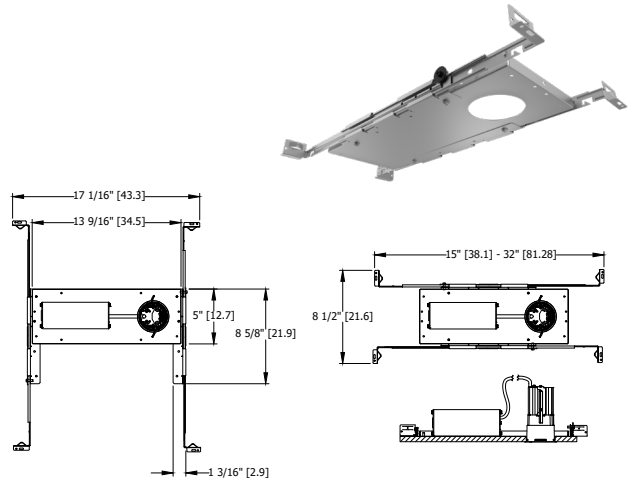
\*Dimensions in inches [centimeters]

|                        |  |
|------------------------|--|
| Aperture: 2-1/4" [5.7] | Ceiling Opening: 2-5/8" [6.7] self-flanged |
| Overlap Trim: 3" [7.6] | 2-3/4" [7] flangeless                      |

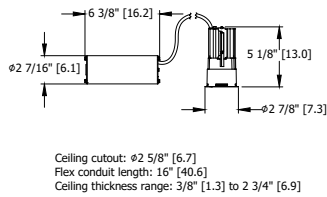
**Recessed Application - Minimum Clearance Requirements**



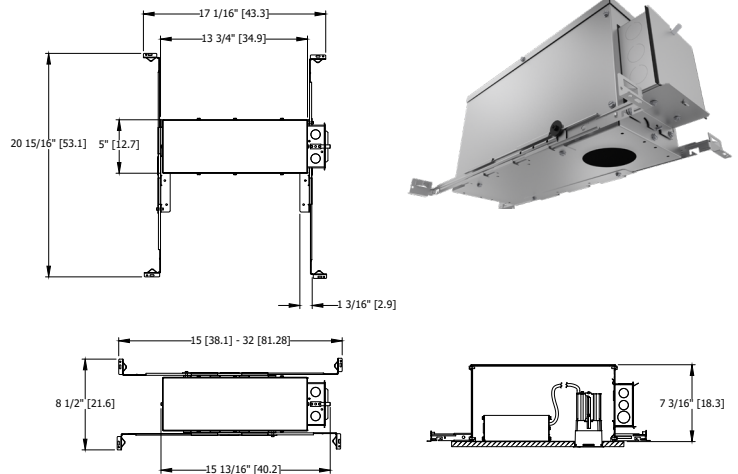
**Structural Reinforcement Pan**



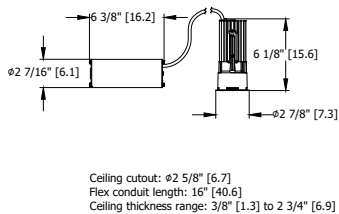
**1000 Lumen and Below Install-from-Below Construction**



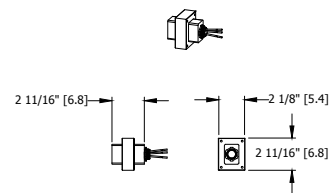
**IC / Airtight Housing / Chicago Plenum Construction**



**1500 and 2000 Lumen or High Ambient Option Install-from-Below Construction**



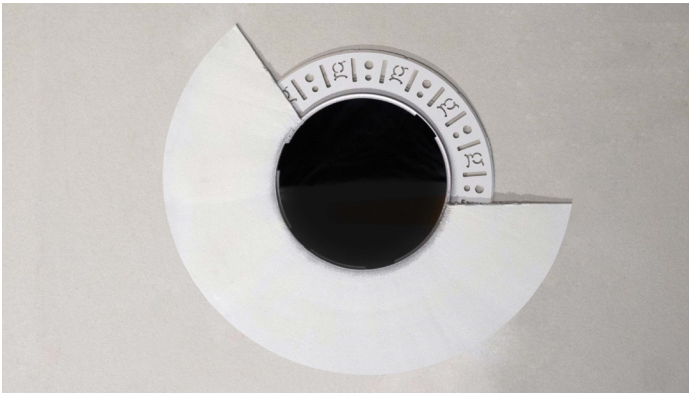
**347V Transformer**



347 Transformer:  
 Install to accessible  
 junction box by others



Partially finished mud ring, showing cross-section detail.



An ICO downlight requires only approximately 3" of plaster to finish.



ICO with flangeless trim

### Flangeless Installation

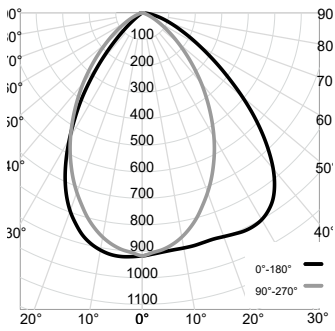
Gotham's flangeless option utilizes a micro-thin polymer mud ring that minimizes the amount of drywall compound required to finish the ceiling. The end result is a virtually undetectable flangeless downlight installation.

The polymer mud ring is installed independent of the recessed frame, therefore floating with the ceiling. This innovation minimizes any surface cracks during reflector installation, ceiling movement and any future service to the recessed frame, wiring, electronics, etc.

Photometry

CONSULT [WWW.GOTHAMLIGHTING.COM](http://WWW.GOTHAMLIGHTING.COM) FOR ADDITIONAL PHOTOMETRY

ICO2BEVLW 35/15 WR Input Watts: 19.8, Delivered Lumens: 1431, LPW: 72.3, S/MH: 1.43, Test No: 19-359-A05P29

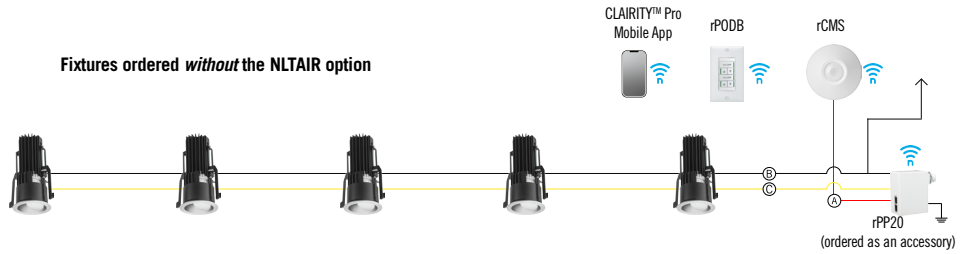


| CP Summary |     | Zonal Lumen Summary |        |           | Coefficients of Utilization |     |     |     |     |     |     |     |     |     | Luminance (cd/sq.m) |                   |  |
|------------|-----|---------------------|--------|-----------|-----------------------------|-----|-----|-----|-----|-----|-----|-----|-----|-----|---------------------|-------------------|--|
| 0°         | 90° | Zone                | Lumens | % Fixture | pf                          | 80% |     |     |     |     | 20% |     |     |     |                     | Average Luminance |  |
|            |     |                     |        |           | pc                          | 50% | 30% | 10% | 50% | 30% | 10% | 50% | 30% | 10% | 0°                  | 45°               |  |
| 0°         | 917 | 0° - 30°            | 648    | 45%       | pw                          | 119 | 119 | 119 | 116 | 116 | 116 | 111 | 111 | 111 | 0°                  | 348,317           |  |
| 5°         | 906 | 0° - 40°            | 974    | 68%       | 1                           | 108 | 105 | 102 | 106 | 103 | 100 | 102 | 99  | 97  | 45°                 | 342,622           |  |
| 15°        | 897 | 0° - 60°            | 1,343  | 94%       | 2                           | 98  | 93  | 88  | 96  | 91  | 87  | 93  | 89  | 85  | 55°                 | 236,302           |  |
| 25°        | 909 | 0° - 90°            | 1,431  | 100%      | 3                           | 89  | 82  | 77  | 87  | 81  | 77  | 84  | 79  | 75  | 65°                 | 151,895           |  |
| 35°        | 859 | 90° - 180°          | 1      | 0%        | 4                           | 81  | 74  | 68  | 79  | 73  | 68  | 77  | 71  | 67  | 75°                 | 102,082           |  |
| 45°        | 638 | 0° - 180°           | 1,431  | 100%      | 5                           | 74  | 66  | 61  | 73  | 66  | 61  | 71  | 65  | 60  | 85°                 | 27,348            |  |
| 55°        | 357 |                     |        |           | 6                           | 68  | 60  | 55  | 67  | 60  | 55  | 65  | 59  | 54  |                     |                   |  |
| 65°        | 169 |                     |        |           | 7                           | 62  | 55  | 50  | 62  | 55  | 50  | 60  | 54  | 49  |                     |                   |  |
| 75°        | 70  |                     |        |           | 8                           | 58  | 50  | 45  | 57  | 50  | 45  | 56  | 50  | 45  |                     |                   |  |
| 85°        | 6   |                     |        |           | 9                           | 54  | 46  | 42  | 53  | 46  | 42  | 52  | 46  | 41  |                     |                   |  |
| 90°        | 4   |                     |        |           | 10                          | 50  | 43  | 38  | 50  | 43  | 38  | 49  | 42  | 38  |                     |                   |  |

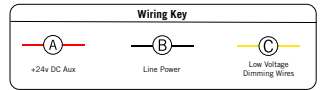
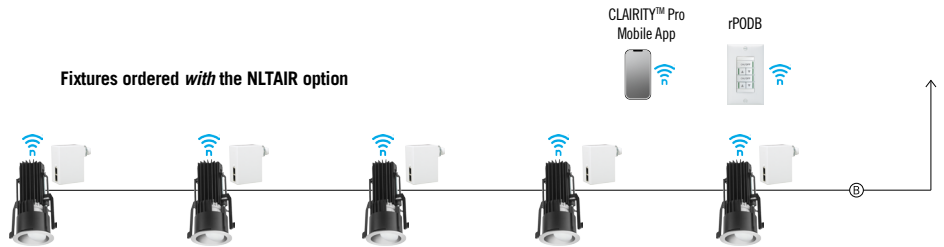
**nLight® AIR** is the ideal solution for retrofit or new construction spaces where adding communication wiring is cost prohibitive. The integrated nLight AIR rPP20 Power Pack is part of each EVO Luminaire ordered with the NLTAIR option. These individually addressable controls offer the ultimate in flexibility during initial setup and for space repurposing.

**Possibilities for nLight® AIR**

Fixtures ordered *without* the NLTAIR option



Fixtures ordered *with* the NLTAIR option



**nLight® AIR Control Accessories**

Order as separate catalog number. Visit [nLight AIR](#).

| Wall Switches                    | Model Number           |
|----------------------------------|------------------------|
| On/Off single pole               | rPODB (color) G2       |
| On/Off two pole                  | rPODB 2P (color) G2    |
| On/Off & raise/lower single pole | rPODB DX (color) G2    |
| On/Off & raise/lower two pole    | rPODB 2P DX (color) G2 |

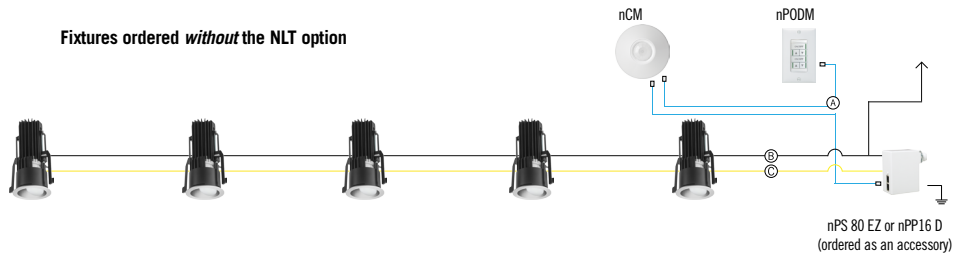
**nLight® AIR Control Accessories (cont.)**

| Occupancy Sensors (PIR/dual tech) | Model Number          |
|-----------------------------------|-----------------------|
| Small motion 360°, ceiling        | rCMS 9 / rCMS PDT 9   |
| Large motion 360°, ceiling        | rCMS 10 / rCMS PDT 10 |

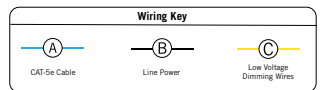
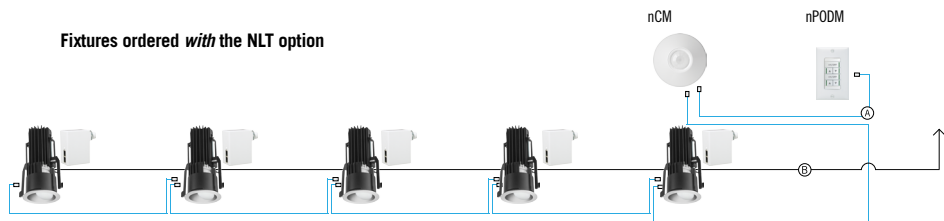
**nLight® Wired** The nLight® solution is a digital networked lighting control system that provides both energy savings and increased user configurability by cost effectively integrating time-based, daylight-based, sensor-based and manual lighting control schemes.

**Possibilities for nLight® wired**

Fixtures ordered *without* the NLT option



Fixtures ordered *with* the NLT option



**nLight® Wired Control Accessories**

Order as separate catalog number. Visit [nLight](#).

| Wall Switches                    | Model Number     |
|----------------------------------|------------------|
| On/Off single pole               | nPODM (XX)       |
| On/Off two pole                  | nPODM 2P (XX)    |
| On/Off & raise/lower single pole | nPOD DX (XX)     |
| On/Off & raise/lower two pole    | nPODM 2P DX (XX) |
| Graphic touchscreen              | nPOD GFX (XX)    |

| Photocell Controls | Model Number |
|--------------------|--------------|
| Dimming            | nCM ADCX     |

**nLight® Wired Control Accessories (cont.)**

| Occupancy Sensors (PIR/dual tech) | Model Number                |
|-----------------------------------|-----------------------------|
| Small motion 360°, ceiling        | nCM 9 / nCM PDT 9           |
| Large motion 360°, ceiling        | nCM 10 / nCM PDT 10         |
| Wide View                         | nWV 16 / nWV PDT 16         |
| Wall switch with raise/lower      | nWSX LV DX / nWSX PDT LV DX |

| Cat-5 Cables (plenum rated) | Model Number |
|-----------------------------|--------------|
| 10', CAT5                   | CAT5 10FT J1 |
| 15', CAT5                   | CAT5 15FT J1 |