

General Illumination Square Patient Room Downlight with nTune

4"

Feature Set

- Tunable White solution that reproduces natural light patterns and colors, complements materials, and supports productivity.
- Rhythm Range (2700K-6500K) follows the cycle of daylight
- Productivity Range (3000K-5000K) to re-energize and inspire, ideal for collaboration
- WARMDIM® Range (3000K-1800K) for relaxing; warm and comfortable when dimmed
- Non-conductive dead-front trim
- Flush or regressed lensed trim with antimicrobial finish for wipe-down areas
- Rated 65,000 hours (L80) at 25°C ambient temperature
- Dim to Dark 100% - 0.1%

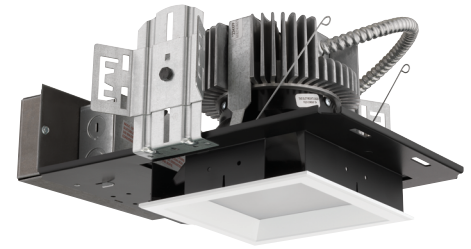
Distribution



Superior Performance

| Nominal lumens | 750 | 1000 | 1500 | 2000 | 2500 |
|----------------|-----|------|------|------|------|
| Delivered | 782 | 1087 | 1447 | 1867 | 2224 |
| Wattage | 11 | 14 | 19 | 24 | 29 |
| Efficacy | 74 | 78 | 76 | 78 | 77 |

*80 CRI, 3500K



Coordinated Apertures | Multiple Layers of Light



General Illumination Layer | EVO

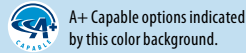


High Center Beam Layer | Incito



EVO + Incito — Multiple Layers of Light

| | | |
|---|--|-----------------------------|
| Downlight Open Wallwash Lensed Wallwash Cylinder | Downlight Adjustable Lensed Wallwash Cylinder | Core |
| MRI Surgical Suite Patient Room | | Healthcare |
| Dynamic Food Service Vandal Clean Room Shower | | Special Applications |



A+ Capable options indicated by this color background.

Luminaire Type:

Catalog Number:

EXAMPLE: EVO4SQP TUWH PROR/10 DFR SOL MVOLT NLT

| Series | Dynamic Feature | Dynamic Range ¹ | Nominal lumens values ² | Reflector/Lens Setting/Flange Color | Lens |
|--|---|---|---|--|--|
| EVO4SQP 4" Square Patient Downlight | TUWH Tunable White WDIM Warm Dimming | PROR Productivity Range (3000K-5000K) RHYR Rhythm Range (2700K-6500K) HALR Halogen Range (3000K-1800K) | /07 750 lumens /10 1000 lumens /15 1500 lumens /20 2000 lumens /25 2500 lumens /30 3000 lumens | DFR Regressed lensed white trim DFF Flush lensed white trim DFRAMF Regressed lensed white trim with antimicrobial finish DFFAMF Flush lensed white trim with antimicrobial finish | SOL Textured Lens SMO Smooth Clear Lens |

| Voltage | Control Interface Type | Options |
|---|--|--|
| MVOLT Multi-Volt 120 120V 277 277V | NLT³ nLight nTune interface NLTER³ nLight nTune interface with emergency circuit ZT 0-10V dimming DALI DALI logarithmic dimming to <1%. | SF Single fuse. Specify 120V or 277V. E10WCPR⁴ Emergency battery pack, 10W Constant Power, CA Title 20 compliant with remote test switch BGTD Bodine generator transfer device |

ACCESSORIES — order as separate catalog numbers (shipped separately)

| | |
|---------------------------|--|
| SCA4 | Sloped ceiling adapter. Degree of slope must be specified (5D, 10D, 15D, 20D, 25D, 30D). Ex: SCA4 10D. Refer to TECH-190 . |
| CTA4-8 YK | Ceiling thickness adapter (extends mounting frame to accommodate ceiling thickness up to 5"). Adds 1" to fixture height. |
| FCS 7TSN XXX | Fresco Lighting Control; XXX = Color. Refer to FRESCO spec sheet for additional options. |
| nPODM 2P DX CCT XX | nLight 2 Channels, On/off + raise/lower control, CCT, XX = Color |
| nPODM 4S DX XX | nLight 4 Scene Control, On/off + raise/lower control, XX = Color |
| nPODM 4S XX | nLight 4 Scene Control, XX = Color |

ORDERING NOTES

1. PROR and RHYR available only with TUWH. HALR available only with WDIM.
2. Nominal lumen values when tested at 3500K.
3. Requires power from nLight network bridge or nPS 80.
4. 11" of plenum depth or top access required for battery pack maintenance.
5. Voltage specific (120 or 277V). Battery pack not available.

Optical Assembly

Fully serviceable and upgradeable lensed LED light engine suitable for field maintenance or service from below the ceiling. Unitized optics shall have mechanical attachment of the light engine to the lower reflector for complete optical alignment.

Electrical

The luminaire shall operate from a 50 or 60 Hz ± 3 Hz AC line over a voltage ranging from 120 VAC to 277 VAC. The fluctuations of line voltage shall have no visible effect on the luminous output.

The luminaire shall have a power factor of 90% or greater at all standard operating voltages and full luminaire output.

Sound Rated A+. Driver shall be >80% efficient at full load across all input voltages.

Input wires shall be 18AWG, 300V minimum, solid copper.

Controls

Tunable white nTune™ is an all-digital light color temperature control within an nLight enabled luminaire.

nTune™ allows color temperature settings through the Productivity Range of 3000K to 5000K or Rhythm Range of 2700K to 6500K.

Refer to nLight Programming User's Guide for instructions on customizing your application with SensorView™.

Dimming

The luminaire shall be capable of continuous dimming without perceivable stroboscopic flicker as measured by flicker index (ANSI/IES RP-16-10) over a range of 100 – 0.1% of rated lumen output with a smooth shut off function to step to 0%.

Construction

Luminaire housing shall be constructed of 16-gauge galvanized steel and have preinstalled telescopic mounting bars with maximum 32" and minimum 15" extension and 4" vertical adjustment.

Luminaires shall be suitable for installation in ceilings up to 1½" thick. (specify ceiling thickness adapter to extend frame to accommodate ceiling thickness up to 5").

Tool-less adjustments shall be possible after installation.

The assembly and manufacturing process for the luminaire shall be designed to assure all internal components are adequately supported to withstand mechanical shock and vibration.

25°C ambient temperature standard (1/2" clearance on all sides from non-combustible materials in non-IC applications, unless marked spacing noted otherwise).

For use in insulated ceilings, a 3" clearance on all sides from insulation is required (unless marked spacing noted otherwise).

Listings

Fixtures are CSA certified to meet US and Canadian Standards: All fixtures manufactured in strict accordance with the appropriate and current requirements of the "Standards for Safety" to UL, wet location covered ceiling.

Photometrics

LEDs tested to LM-80 standards. Measured by IESNA Standard LM-79-08 in an accredited lab. Lumen output shall not decrease by more than 20% over the minimum operational life of 60,000 hours.

Buy American Act

This product is assembled in the USA and meets the Buy America(n) government procurement requirements under FAR, DFARS and DOT regulations. Please refer to www.acuitybrands.com/buy-american for additional information.

Warranty

5-year limited warranty. Complete warranty terms located at: www.acuitybrands.com/support/customer-support/terms-and-conditions

Note:

Actual performance may differ as a result of end user environment and application.

All values are design or typical values, measured under laboratory conditions at 25 °C.

A+ Capable Luminaire

This item is an A+ capable luminaire, which has been designed and tested to provide consistent color appearance and out-of-the-box control compatibility with simple commissioning.

- All configurations of this luminaire meet the Acuity Brands' specification for chromatic consistency
- This luminaire is part of an A+ Certified solution for nLight® control networks when ordered with drivers marked by a shaded background*
- This luminaire is part of an A+ Certified solution for nLight® control networks, providing advanced control functionality at the luminaire level, when selection includes driver and control options marked by a shaded background*

To learn more about A+, visit www.acuitybrands.com/aplus.

*See ordering tree for details

| DFF SMO - Flush Clear | | | | | | | |
|-----------------------|------|------|------|------|------|------|------|
| Nominal Lumens | 250 | 500 | 750 | 1000 | 1500 | 2000 | 2500 |
| Delivered | 222 | 445 | 667 | 866 | 1316 | 1730 | 2224 |
| Wattage | 3.1 | 7.2 | 7.9 | 8.8 | 13.7 | 19.5 | 25.7 |
| Efficacy | 71.6 | 61.8 | 84.4 | 98.4 | 96.1 | 88.7 | 86.5 |

*Lumen output for 80CRI - 3500K

| DFF SOL - Flush Textured | | | | | | | |
|--------------------------|------|------|------|------|------|------|------|
| Nominal Lumens | 250 | 500 | 750 | 1000 | 1500 | 2000 | 2500 |
| Delivered | 203 | 407 | 610 | 792 | 1203 | 1582 | 2034 |
| Wattage | 3.1 | 7.2 | 7.9 | 8.8 | 13.7 | 19.5 | 25.7 |
| Efficacy | 65.5 | 56.5 | 77.2 | 90.0 | 87.8 | 81.1 | 79.1 |

*Lumen output for 80CRI - 3500K

| DFR SMO - Regressed Clear | | | | | | | |
|---------------------------|------|------|------|------|------|------|------|
| Nominal Lumens | 250 | 500 | 750 | 1000 | 1500 | 2000 | 2500 |
| Delivered | 203 | 405 | 608 | 789 | 1199 | 1577 | 2027 |
| Wattage | 3.1 | 7.2 | 7.9 | 8.8 | 13.7 | 19.5 | 25.7 |
| Efficacy | 65.5 | 56.3 | 77.0 | 89.7 | 87.5 | 80.9 | 78.9 |

*Lumen output for 80CRI - 3500K

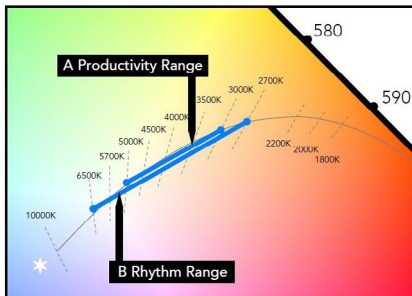
| DFR SOL - Regressed Textured | | | | | | | |
|------------------------------|------|------|------|------|------|------|------|
| Nominal Lumens | 250 | 500 | 750 | 1000 | 1500 | 2000 | 2500 |
| Delivered | 187 | 374 | 561 | 728 | 1106 | 1455 | 1870 |
| Wattage | 3.1 | 7.2 | 7.9 | 8.8 | 13.7 | 19.5 | 25.7 |
| Efficacy | 60.3 | 51.9 | 71.0 | 82.7 | 80.7 | 74.6 | 72.8 |

*Lumen output for 80CRI - 3500K

| Lumen Output Multiplier | | |
|-------------------------|-------|------------|
| CRI | CCT | Multiplier |
| 80 | 2700K | 0.96 |
| | 3000K | 0.97 |
| | 3500K | 1.00 |
| | 4000K | 1.01 |
| | 5000K | 1.07 |
| 90 | 2700K | 0.80 |
| | 3000K | 0.83 |
| | 3500K | 0.85 |
| | 4000K | 0.87 |
| | 5000K | 0.91 |

| Driver Default Dimming Curve | | | |
|------------------------------|-------------|------------------|--------------------|
| Nomenclature | Min Dimming | Driver Dim Curve | Control Dim Curve |
| ZT | 0.1% | Linear | Linear/Logarithmic |
| DALI | 0.1% | Linear | Linear/Logarithmic |

MAINSTREAM DYNAMIC TUNABLE WHITE WITH NTUNE TECHNOLOGY



A Productivity Range 3000K to 5000K

B Rhythm Range 2700K to 6500K

Tunable white nTune™ is an all digital light color temperature control within an nLight enabled luminaire. This brings tunable white lighting control into the mainstream with repeatable, consistent results in an economical luminaire form and system already familiar to schools. Designers and facility operators are granted the freedom to tie scenes to specific activities or to complement colors or materials within a visual environment. nTune™ allows color temperature settings through the Productivity Range of 3000K to 5000K or Rhythm Range of 2700K to 6500K. Refer to nLight Programming User's Guide for instructions on customizing to your application with SensorView™.

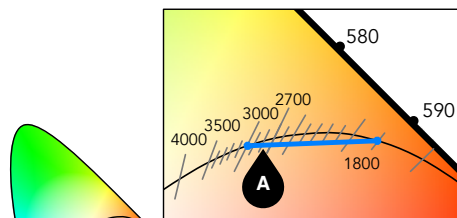
TUNABLE WHITE GPHD

Gamut: One dimensional warm-Cool

Path: Direct 3000K to 5000K (Productivity Range) or 2700K to 6500K (Rhythm Range)

Handle: Two Natural Language Handles: Intensity and CCT

Data: nLight with nTune technology for both handles of control



A Halogen Range 3000K to 1800K

How to Estimate Delivered Lumens in Emergency Mode

$$\text{Delivered Lumens} = 1.25 \times P \times \text{LPW}$$

P = Output power of emergency driver. P = 10W for PS1055CP

LPW = Lumen per watt rating of the luminaire. This information is available on the ABL luminaire spec sheet.

*Dimensions in inches [centimeters]

Aperture: 4-5/16" (11)

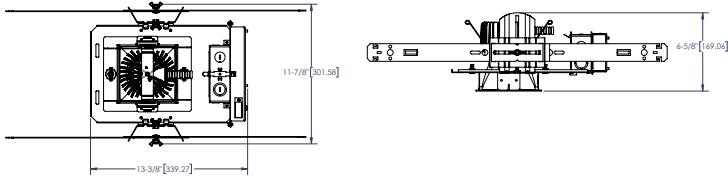
Ceiling Opening: 5-1/8" (13) self-flanged

Overlap trim: 5-7/16" (13.8)

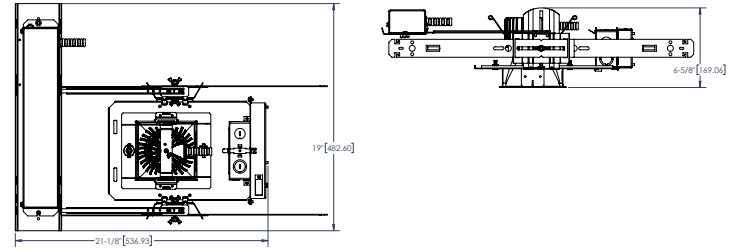
5-1/4" (13.3) flangeless

DIMENSIONAL DATA

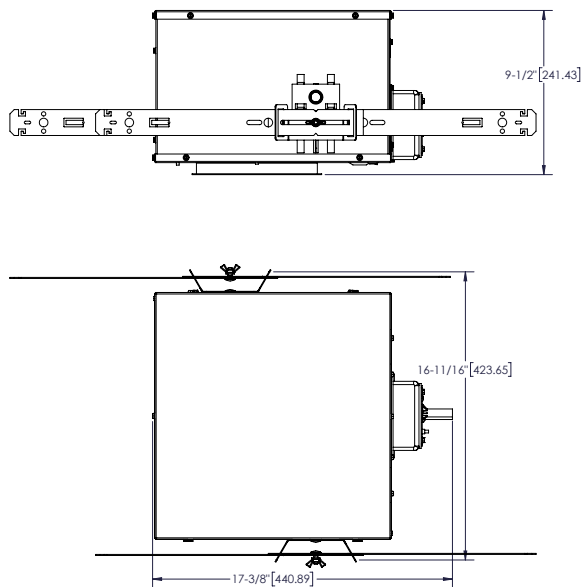
Standard



Battery Pack

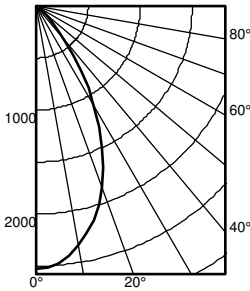


CP Standard



EV04SQP TUWH RHYR /25 4DFF SMO 3500K

INPUT WATTS: 29.5, DELIVERED LUMENS: 2224, LM/W=75.4, 0.83 S/MH, TEST NO. LTL29879P219

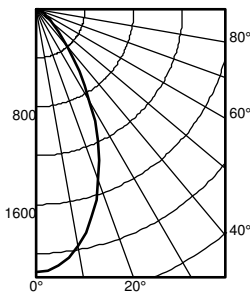


| Ave | Lumens | Zone | Lumens | % Lamp | pf | pc | 80% | | | 20% | | | 50% | | |
|-----|--------|-------------|--------|--------|----|----|-----|-----|-----|-----|-----|-----|-----|-----|-----|
| | | | | | | | 50% | 30% | 10% | 50% | 30% | 10% | 50% | 30% | 10% |
| 0 | 2531 | 0° - 30° | 1505.0 | 67.7 | 0 | | 119 | 119 | 119 | 116 | 116 | 116 | 111 | 111 | 111 |
| 5 | 2484 | 0° - 40° | 1973.7 | 88.7 | 1 | | 110 | 108 | 106 | 108 | 106 | 104 | 104 | 102 | 101 |
| 15 | 2127 | 0° - 60° | 2196.2 | 98.8 | 2 | | 102 | 98 | 95 | 101 | 97 | 94 | 97 | 94 | 92 |
| 25 | 1499 | 0° - 90° | 2223.9 | 100.0 | 3 | | 95 | 90 | 86 | 94 | 89 | 85 | 91 | 87 | 84 |
| 35 | 749 | 90° - 180° | 0.0 | 0.0 | 4 | | 89 | 83 | 79 | 88 | 82 | 78 | 85 | 81 | 77 |
| 45 | 221 | 0° - 180° | 2223.9 | *100.0 | 5 | | 83 | 77 | 72 | 82 | 76 | 72 | 80 | 75 | 71 |
| 55 | 41 | *Efficiency | | | | 6 | | 78 | 71 | 67 | 77 | 71 | 67 | 75 | 70 |
| 65 | 16 | | | | 7 | | 73 | 67 | 62 | 72 | 66 | 62 | 71 | 66 | 62 |
| 75 | 8 | | | | 8 | | 68 | 62 | 58 | 68 | 62 | 58 | 67 | 61 | 58 |
| 85 | 4 | | | | 9 | | 65 | 58 | 54 | 64 | 58 | 54 | 63 | 58 | 54 |
| 90 | 0 | | | | 10 | | 61 | 55 | 51 | 61 | 55 | 51 | 60 | 54 | 51 |

| Initial FC | | | | | | 50% beam - | 10% beam - |
|------------|--------|----------|------|----------|-----|------------|------------|
| Mounting | | | | | | 46.4° | 76.9° |
| Height | Center | Diameter | FC | Diameter | FC | | |
| 8.0 | 83.7 | 4.7 | 41.8 | 8.7 | 8.4 | | |
| 10.0 | 45.0 | 6.4 | 22.5 | 11.9 | 4.5 | | |
| 12.0 | 28.0 | 8.2 | 14.0 | 15.1 | 2.8 | | |
| 14.0 | 19.1 | 9.9 | 9.6 | 18.3 | 1.9 | | |
| 16.0 | 13.9 | 11.6 | 6.9 | 21.5 | 1.4 | | |

EV04SQP TUWH RHYR /25 4DFF SOL 3500K

INPUT WATTS: 29.5, DELIVERED LUMENS: 2034, LM/W=68.9, 0.81 S/MH, TEST NO. LTL29881P219



| Ave | Lumens | Zone | Lumens | % Lamp | pf | pc | 80% | | | 20% | | | 50% | | |
|-----|--------|-------------|--------|--------|----|----|-----|-----|-----|-----|-----|-----|-----|-----|-----|
| | | | | | | | 50% | 30% | 10% | 50% | 30% | 10% | 50% | 30% | 10% |
| 0 | 2157 | 0° - 30° | 1227.3 | 60.3 | 0 | | 119 | 119 | 119 | 116 | 116 | 116 | 111 | 111 | 111 |
| 5 | 2111 | 0° - 40° | 1614.3 | 79.4 | 1 | | 109 | 106 | 103 | 107 | 104 | 102 | 103 | 101 | 99 |
| 15 | 1761 | 0° - 60° | 1917.3 | 94.2 | 2 | | 100 | 95 | 91 | 98 | 94 | 90 | 95 | 91 | 88 |
| 25 | 1191 | 0° - 90° | 2034.4 | 100.0 | 3 | | 92 | 86 | 82 | 90 | 85 | 81 | 88 | 83 | 80 |
| 35 | 616 | 90° - 180° | 0.0 | 0.0 | 4 | | 85 | 79 | 74 | 84 | 78 | 73 | 82 | 76 | 72 |
| 45 | 251 | 0° - 180° | 2034.4 | *100.0 | 5 | | 79 | 72 | 67 | 78 | 72 | 67 | 76 | 71 | 66 |
| 55 | 111 | *Efficiency | | | | 6 | | 73 | 67 | 62 | 73 | 66 | 62 | 71 | 65 |
| 65 | 65 | | | | 7 | | 69 | 62 | 57 | 68 | 62 | 57 | 67 | 61 | 57 |
| 75 | 38 | | | | 8 | | 64 | 58 | 53 | 64 | 58 | 53 | 63 | 57 | 53 |
| 85 | 10 | | | | 9 | | 61 | 54 | 50 | 60 | 54 | 50 | 59 | 53 | 49 |
| 90 | 0 | | | | 10 | | 57 | 51 | 47 | 57 | 51 | 47 | 56 | 50 | 46 |

| Initial FC | | | | | | 50% beam - | 10% beam - |
|------------|--------|----------|------|----------|-----|------------|------------|
| Mounting | | | | | | 44.5° | 77.3° |
| Height | Center | Diameter | FC | Diameter | FC | | |
| 8.0 | 71.3 | 4.5 | 35.7 | 8.8 | 7.1 | | |
| 10.0 | 38.3 | 6.1 | 19.2 | 12.0 | 3.8 | | |
| 12.0 | 23.9 | 7.8 | 11.9 | 15.2 | 2.4 | | |
| 14.0 | 16.3 | 9.4 | 8.2 | 18.4 | 1.6 | | |
| 16.0 | 11.8 | 11.0 | 5.9 | 21.6 | 1.2 | | |

nLight® The nLight® solution is a digital networked lighting control system that provides both energy savings and increased user configurability by cost effectively integrating time-based, daylight-based, sensor-based and manual lighting control schemes.

nLight® Wired Control Accessories

Order as separate catalog number. Visit nLight.com.

Wall Switches

| | Model Number |
|----------------------------------|----------------|
| On/Off single pole | nPODM XX |
| On/Off two pole | nPODM 2P XX |
| On/Off & raise/lower single pole | nPOD DX XX |
| On/Off & raise/lower two pole | nPODM 2P DX XX |
| Graphic touchscreen | nPOD GFX XX |

Photocell Controls

| | |
|---------|----------|
| Dimming | nCM ADCX |
|---------|----------|

nLight® Wired Control Accessories (cont.)

Occupancy Sensors (PIR/dual tech)

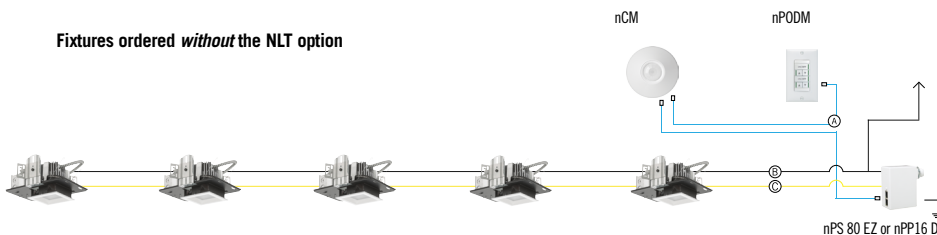
| | Model Number |
|------------------------------|-----------------------------|
| Small motion 360°, ceiling | nCM 9 / nCM PDT 9 |
| Large motion 360°, ceiling | nCM 10 / nCM PDT 10 |
| Wide View | nWV 16 / nWV PDT 16 |
| Wall switch with raise/lower | nWSX LV DX / nWSX PDT LV DX |

Cat-5 Cables (plenum rated)

| | |
|-----------|--------------|
| 10', CAT5 | CAT5 10FT J1 |
| 15', CAT5 | CAT5 15FT J1 |

Possibilities for nLight® wired

Fixtures ordered *without* the NLT option



Fixtures ordered *with* the NLT option

