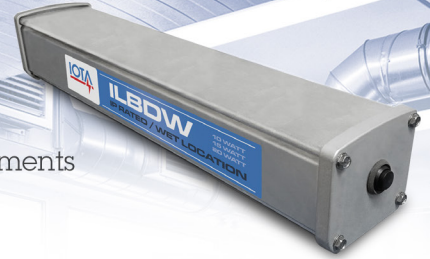


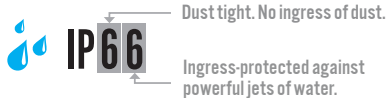


Emergency Drivers for Damp, Wet, and Food Prep Environments



The ILBDW Series brings the powerful capability of IOTA® emergency drivers to luminaires in damp, wet, and food preparation spaces. Featuring a heavy-duty, watertight enclosure and test switch, the ILBDW is IP66 rated and is NSF-certified for safe use in food and beverage applications.

Designed to Withstand.



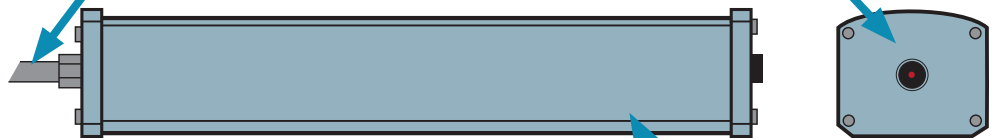
The IP66-rated enclosure ensures protection against moisture, sprayed water, dust, and debris.



NSF-Certified, safe for use in food and beverage preparation areas.

Moisture-resistant, flexible PVC conduit for connecting to the fixture.

IP-rated test switch / indicator light (available on end of unit or at end of conduit.)



Gasketed die-cast aluminum housing provides durable protection against moisture and debris.

Designed to Perform.

The ILBDW Series includes these design features to provide confident emergency lighting performance for your egress requirements:



Constant Power means the unit will operate LEDs at the rated output of the emergency driver with no variance based on load voltage or diminishing lumen levels during operation.



The ILBDW Series will automatically conduct the required monthly and annual tests and communicate any issues via the dual-color indicator light.



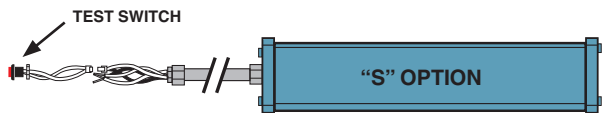
AC Activate simplifies wiring by eliminating the need for manual battery connection during installation. No need to service the unit twice to connect the battery after normal power is applied.



Certified in CA TITLE 20
Appliance Efficiency Database -
Battery Charger

High-Efficiency ("HE") design minimizes power consumption while in the standby charging mode and is certified in the Modernized Appliance Efficiency Database (MAEDBS) for use in CA Title 20 applications.

Mounting Options



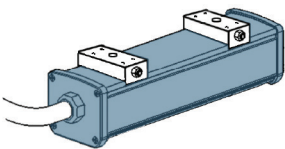
The “S” model includes the single-piece, IP-rated test accessory within the conduit for installation in the luminaire.



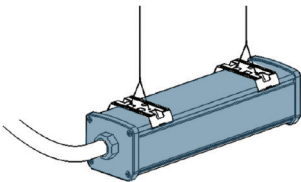
The “SLTEST” option provides access to the single-piece, IP-rated test switch on the unit itself.

Accessories

The **KIT DWFIXED** allows the ILBDW to be mounted to the ceiling adjacent to the connected fixture. Additional “L” brackets can be used for mounting the unit to the wall.



The **KIT DWSUSP** allows the ILBDW to be suspended to the ceiling adjacent to the connected fixture.



Models

Model Name	Description	Output Voltage
ILBDW CP10 HE SD	10W Emergency Driver for Damp, Wet, NSF Applications, 120-277VAC Input/Class 2 Output	15-55VDC
ILBDW CP15 HE SD	15W Emergency Driver for Damp, Wet, NSF Applications, 120-277VAC Input/Class 2 Output	20-55VDC
ILBDW CP20 HE SD HV	20W Emergency Driver for Damp, Wet, NSF Applications, 120-277VAC Input/Non-Class 2 Output	55-200VDC



Constant Emergency Lumen Performance (from Minute 1 to Minute 90)

Luminaire Efficacy	ILBDW CP15 HE SD	ILBDW CP15 HE SD	ILBDW CP20 HE SD HV
100 lumens/watt	1000 lumens	1500 lumens	2000 lumens
110 lumens/watt	1100 lumens	1650 lumens	2200 lumens
120 lumens/watt	1200 lumens	1800 lumens	2400 lumens
130 lumens/watt	1300 lumens	1950 lumens	2600 lumens
140 lumens/watt	1400 lumens	2100 lumens	2800 lumens
150 lumens/watt	1500 lumens	2250 lumens	3000 lumens