



KIT DWFIXED

MOUNTING ACCESSORY KIT
FOR ILBDW SERIES EMERGENCY
LED DRIVERS

(520) 294-3292 • www.iotaengineering.com

The KIT DWFIXED accessory kit may be used to mount an IOTA ILBDW Series Emergency LED Driver to the ceiling. Wall mounting is also possible if using an additional “L-shaped” bracket (not provided).

⚠ The ILBDW must be oriented such that the arrow on the unit label faces up after the ILBDW is attached to the KIT DWFIXED brackets.

Installation Instructions

1. Install the KIT DWFIXED brackets to the mounting surface. See *Illustration 1* for mounting hole sizes.

Unless the large center hole is used, use each similar sized hole to ensure the unit will be properly secured to the mounting surface when attached.

Ensure the brackets are spaced so they are located at each end of the ILBDW unit, when attached and that the arrow on the ILBDW unit label is facing up (see *Illustration 2*).

2. Hang the ILBDW unit on one edge of the installed brackets and rotate the ILBDW up to snap in the other side of the bracket.
3. Install the carriage bolt and nut into both KIT DWFIXED brackets and tighten nut down to 13 in/lbs.

Illustration 1: Mounting hole sizes

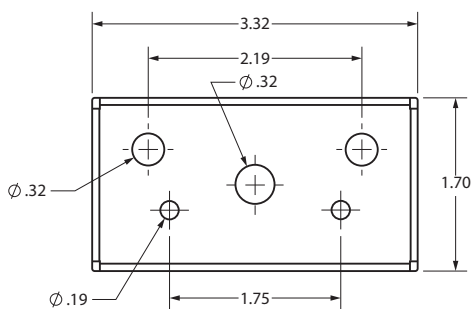


Illustration 2: Attaching ILBDW to brackets

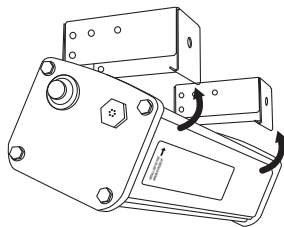
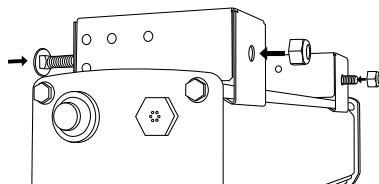


Illustration 3: Installing carriage bolt and nut



Replacing Unit

To replace the ILBDW model, unscrew the carriage bolt nut and remove the carriage bolt. Then press the ILBDW towards one end of the KIT DWFIXED brackets until the unit may be lifted off the adjacent ends. Remove the ILBDW model and follow the Installation Instructions to install the replacement.