

nLight®
Snapshot
Controller
for DMX Control

www.nlightcontrols.com

nLight® DMX Control

The nLight networked lighting controls platform has added DMX512 control with the nLight Snapshot controller. The nLight Snapshot leverages the power of nLight with DMX512 control from Pathway Connectivity Solutions® for a simple and unified nLight Wired solution.

The nLight Snapshot is the gateway linking nLight controls and DMX512 products, enabling easy, bi-directional communication between DMX and nLight. Through this device, nLight Wired controls (i.e., wall switches or sensors) can directly control theatrical DMX lights, and the DMX lighting control console can dim or turn off the nLight controlled lights or initiate scenes.



Powered by **Pathway™**

A "Snapshot", like a nLight scene, is the recording of fixed DMX512 color and intensity levels created by any theatrical console or similar controller.

Features

- Ability for nLight to trigger up to sixteen DMX snapshots for RGBx and cafetorium applications
- Any DMX control console has the ability to control nLight Wired devices
- Determines the priority of commands, nLight or DMX, based on sequence of operations
- Secure Pathway DMX Networking, California Title 1.81.26 compliant

Simple and Unified Solution

nLight Network
Lighting Controls



nLight
Snapshot
Controller

Setting an Industry Standard

Networked Lighting Controls and DMX

Design and install cafetorium applications offering seamless operation with two-way communication between nLight lighting controls and theatrical DMX controls. Use Visual Controls design software to help you design and specify projects with nLight lighting controls and Pathway DMX networking gear.

Reduce your design and specification time using one high-performance lighting controls system with DMX and nLight, instead of two-disparate systems allowing delivery of building/site lighting management continuity.

Now that you know nLight can speak DMX with the innovative nLight Snapshot, learn more about Pathway, and its DMX networking expertise and industry leadership.



Pathway DMX
Network Control

Complete the Solution

with Pathway DMX Devices

Many jobs with DMX controlled lights require additional support devices such as opto-splitters and data receptacles. The next step in your cafetorium project is to include the Pathway DMX control products to complete the solution. Please reference the three options on page 6 to help guide you on your projects.

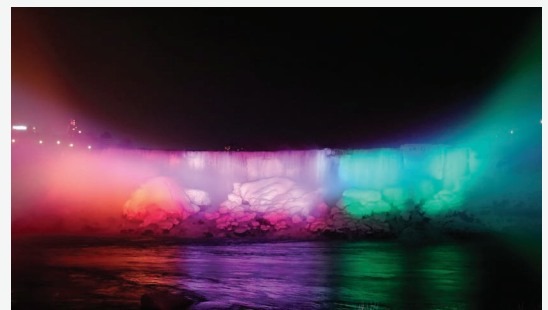
With Visual Controls software, we make design and installation easy to aid in code compliance and energy management with nLight lighting controls and Pathway DMX networking gear.

Multipurpose spaces in schools need lighting solutions that are creative, functional, and aid in code compliance. The nLight Snapshot leverages the power of nLight and Pathway controls in a simple and unified solution.

[Click here for more Pathway product information.](#)



Pathway Connectivity Solutions is your dynamic DMX lighting network backbone for projects that include commercial DMX and high-end entertainment lighting control systems.

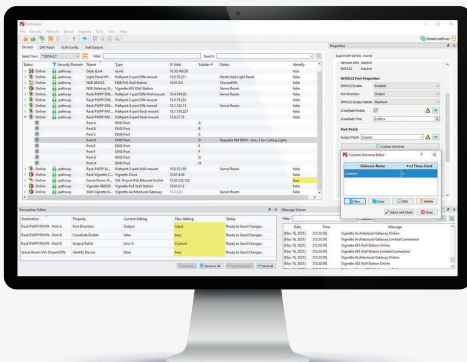
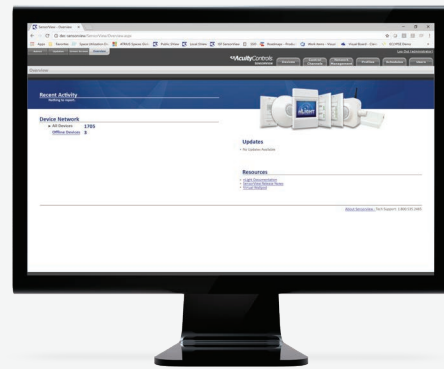


The nLight Snapshot Controller creates a single solution for controlling DMX and nLight Wired devices, offering a toolset of software solutions for ease of configuration and commissioning.

- nLight Snapshot appears in SensorView as a control device with 16 outputs and 1 input (composed of 16 virtual wall switches and 16 scenes).
- Pathscope is used to configure 16 DMX snapshots that respond to nLight outputs and can route DMX channels to nLight channels using theatrical console fade rate. The console can also trigger nLight profile or preset scenes.

SensorView Software

SensorView is an intuitive and easy-to-use, web-based suite of applications that gives authorized users the ability to remotely configure and monitor nLight network luminaires and control devices. SensorView also can assist with system commissioning by indicating and reporting on sensor and controller settings in addition to displaying live device status.



Pathscope™ Software

Pathscope software is a free, user-friendly tool that simplifies and streamlines DMX lighting network setup, management, and status monitoring. All networked Pathway devices are listed in one place, in customizable display formats. Colorful icons shows the status of the devices at-a-glance, and it is easy to drill down and see how devices are interconnected.

How the Cafetorium Comes Together

nLight and Pathway

A cafetorium control solution can be achieved in various ways, but three options are employed most often from our experience: Basic, Intermediate, and Advanced.

Basic Solution

The basic option provides simple presentation events with the click of a button, without being a lighting expert. The bill of materials below provides easy-to-use button presets for video and lighting presentation control (i.e., podium center, stage left, stage right). For example, if you are a K-8 principal seeking to click a button to give a presentation or dim the lights to show a video.

nLight

- nLight Enabled luminaires
- Occupancy sensors
- Wall Switches
- Power packs
- nLight ECLYPSE™ controller



DMX Lighting Control

- nLight Snapshot Controller and/or Pathway DIN cabinet and power supply



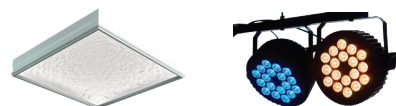
Pathway

- DMX/RDM Repeater
- Modular data receptacles



DMX and Commercial Lighting

- Luminaires (RGBx)
- nLight Enabled Luminaires



**Supplied by another company.*

Intermediate Solution

The intermediate option provides the simplicity of a button click for easy presets control in the basic solution and portable control for color and intensity. For example, if you want to add color and intensity control to your lighting for a holiday event.

nLight

- nLight Enabled luminaires
- Occupancy sensors
- Wall Switches
- Power packs and ARP panel
- nLight ECLYPSE™ controller



DMX Lighting Control

- nLight Snapshot Controller and/or Pathway DIN cabinet and power supply



Pathway

- DMX/RDM Repeater
- Modular data receptacles
- Vignette™ Consolette with sliders for Color Control



DMX and Commercial Lighting

- Luminaires (RGBx)
- nLight Enabled Luminaires



Advanced Solution

The advanced option offers the basic and intermediate options combined with higher-level features and functionality required for a show. For example, you would use this functionality for a school play or concert to create any stage lighting effects desired.

nLight

- nLight Enabled luminaires
- Occupancy sensors
- Wall Switches
- Power packs and ARP panel
- nLight ECLYPSE™ controller



DMX Lighting Control

- nLight Snapshot Controller and/or Pathway DIN cabinet and power supply



Pathway

- DMX/RDM Repeater
- Modular data receptacles
- Vignette™ and Cognito² controls



DMX and Commercial Lighting

- Luminaires (RGBx)
- nLight Enabled Luminaires



Pathway Portfolio

Pathway provides a wide variety of solutions for commercial applications with a complete product line of DMX network control devices, all designed and manufactured in North America.



DMX Controls and Architectural Wall Stations

Vignette wall stations can give you direct hands-on control of the color of your RGBx lights and replace nPODMA raise lower buttons with slider control of nLight enabled luminaire intensities.



DMX-RDM Repeaters

The Pathway DMX Repeater series of opto-splitters are an essential component of DMX distribution systems, permitting multiple DMX runs while isolating and protecting equipment from electrical faults. The RDM variants allow you to address fixtures from the comfort of your desktop versus climbing ladders to adjust DIP switches.



Modular Data Receptacles

Portable stage equipment uses XLR connectors. Pathway's wall receptacle stations fit regular electrical back-boxes and can be specified in nearly any configuration: three, four, or five-pin XLR connectors, in both male or female, and female RJ45 etherCON™ jacks for networked controllers or commissioning PCs.



Cognito Theatrical Lighting Console

The Cognito² solves the complex task of programming shows that include incandescent dimmers, moving lights, and color-changing LED fixtures. Cognito² features a streamlined, natural language interface to guide you through selecting lights from a vast fixture library, adjusting their attributes, and recording reference libraries, memories and cues.



Custom System Assemblies

Specify enclosures with any of the DIN-mountable Pathway products (and the nLight® Snapshot Controller). Pathway System Assemblies (PWSA) ship pre-configured with a power supply. With the Pathway System Assembly Tool software, simply choose the required Pathway devices required for your application to get a Bill of Materials along with a drawing of the custom assembly with its unique catalog number for easy ordering. Visual Controls can import these assemblies when you're doing a full submittal package with other nLight products.