



# DTL<sup>®</sup> DIN

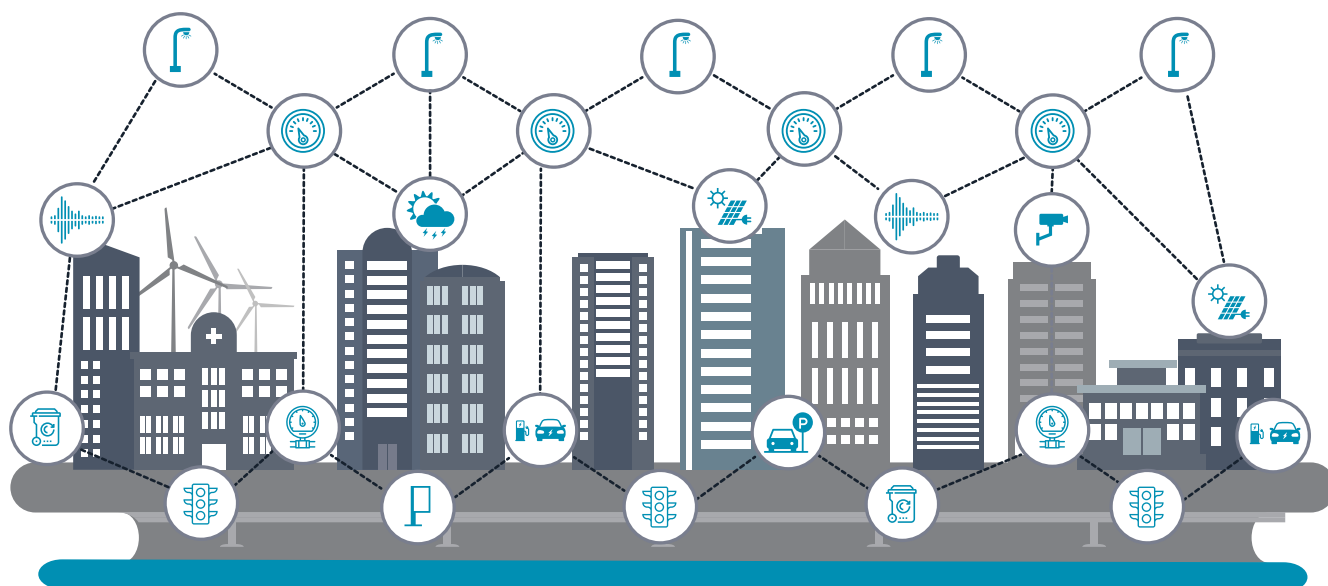
## Networked Lighting Controls

Reliably and Securely  
Connecting Critical Infrastructure

## Overview

The DTL DIN solution combines the reliability of the DLL Elite photocontrol, designed for a 20-year operating life, with the performance of the Itron network platform for unparalleled functionality and adaptive control of street lighting systems.

**Create the perfect network canopy for a robust and secure Smart City:**



Smart Street  
Lights



Smart  
Meters



Smart  
Parking



Environmental  
Sensors



Digital  
Signage



Acoustic  
Sensors



Water & Gas  
Metering



Traffic Lights  
& Controls



Electric Vehicle  
Charging



Solar  
Inverters



Security &  
Surveillance



Waste  
Management

## DIN Networked Photocontrol Benefits



### Robust long-life design for LED Fixtures

- Best-in-class LED driver inrush protection with a TRIAC assisted relay switching circuit
- Meets and exceeds ANSI C136.10 20kV/10kA Extreme Surge Protection
- Double thick UV stabilized enclosure and lens for extended mechanical life
- Full wave rectified power supply for consistent operational performance
- Dual Zener diodes for voltage spike suppression and long life
- 20-year design life with 10-year warranty standard for peace of mind
- Environmental robustness with IP66 and -40C to 70C ambient operating window



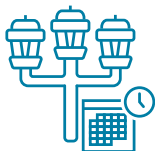
### Best-in-class operational specifications

- Robust switching and load performance with 15A relay
- Revenue grade metering with 0.5% accuracy per ANSI C12.20
- Utilizes high-performance and security Itron (INSI) sub-gigahertz networking technology
- Supports full suite of luminaire and electrical network diagnostics metrology



### Simplifies supply chain, installation, and transition to advanced asset management standards

- Universal Voltage node with one configuration for 120VAC to 480VAC
- Dual-dimming node with 0-10V (analog) and DALI (digital) dimming in same configuration
- DALI 2.0 based ANSI C137.4 support for asset management
- GPS node available for ease of provisioning and streetlight lifecycle management



### Decorative fixtures and sensor ready to cover diverse project needs

- NEMA twist-lock SKU with photocell back up for Holophane® M-style fixtures with external antenna; allows for ease of field installation and streetlight lifecycle management
- Two available ANSI C136.41 7-pin configurations:
  - Occupancy sensing with Sense (contact 6) and 24VDC (contact 7)
  - Smart City sensor ready with RS-232 serial interface on contacts 6 and 7

## Streetlight Vision

### Smart City Central Management Software

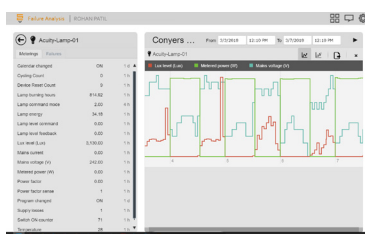
Streetlight.Vision (SLV) is the world leading smart city central management software (CMS), chosen by more than 500 communities to control more than 3 million intelligent devices worldwide.

### Benefits

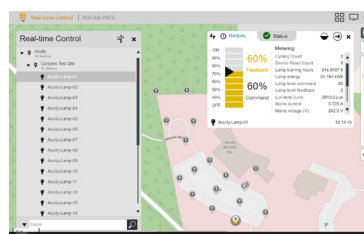
- **Proven Technology:** Deployed in more than 500 projects worldwide.
- **Scalable:** Supports deployments of all sizes from city parks to the world's largest networked lighting project with more than 500,000 lights.
- **Extensible:** Open ecosystem utilizes widely adopted industry standards to enable seamless integration with a variety of solution providers and outdoor lighting and control systems.



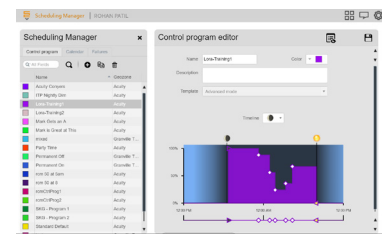
Intuitive Dashboard



Advanced Diagnostics



Real-Time Control



Granular Control Programs & Scheduling

## Key Features



### Security

SLV provides a user-based and role-based access control.



### Asset and Inventory Management

SLV enables users to create, import, export and modify device attributes, search for devices, and develop inventory reports. SLV also supports the ANSI C137.4 standard for automated collection of luminaire and driver attributes.



### Desktop Applications

Simplifies usability and user profile configuration and creates a platform for future smart city applications.



### Advanced Analytics

SLV provides tools to analyze inventory and the behavior of each device or group of devices through canned, custom and scheduled reports.



### Flexible Command and Control

SLV provides on/off/dim by device or group of nodes as well as flexible control programs and scheduling features that can be calendar or astro-based.



### Alarm Management

Proactively alerts users of issues that arise in the field such as lamp failure, location change or power supply failures.



### Data History

SLV collects and stores important data elements and alarms/events which can help identify problems before failures occur.



### Integration with Existing Business Processes

SLV provides flexible APIs used to send notifications, data, and provide services to third-party applications such as customer service systems, geographical information systems and workforce management.



### Smart City Device Support

SLV supports 40 outdoor lighting control system vendors and an expanded range of smart city devices such as traffic cameras, environmental sensors, electrical vehicle charging stations, electrical meters, water meters and more.





### **Why chose the DTL solution powered by the Itron network platform?**

The DTL and Itron solution has a proven track record of success currently supporting over 35 million devices with world class LED photocontrol technology. DTL with Itron provides real-time actionable data with the most advanced security for protection of sensitive data using AES 256-bit encryption.

With the ability to leverage one system capable of connecting multiple smart city devices and applications and an open API, DTL and Itron enable future application development and advancements, so your network continues to improve and meet future needs.

### **One Network, Maintained and Delivered**

Together, Acuity Brands and Itron Networked Solutions connect critical infrastructure with proven and reliable technology. With the deployment of one network, you ensure a stable platform for your most vital services. Through a managed service solution, the network is backed by service level agreements, 24/7 monitoring, and continuous access to firmware updates from Itron's Network Operations Centers.

Leverage your lighting infrastructure to deliver a network capable of connecting smart lighting, smart grid and future smart city applications.

### **Ready to build a smart network?**

Acuity Brands is a certified Itron partner and can provide the complete solution.

### **Already have the Itron network (formerly Silver Spring Networks)?**

We have equipment which is compatible with existing networks.

**Contact your local agent to learn more:**

<https://holophane.acuitybrands.com/contact-us/agent-lookup>

