



Catalog Number
Notes
Type

Contractor Select™

WF4C/WF6C

4" and 6" LED Tunable White Smart Wafer Downlight



The Smart Flat Wafer with Tunable White CCT's is the perfect way to get connected with a Smart Home Lighting solution. Once commissioned, it can be controlled through an app or voice commands. Connect the JunoConnect™ directly to any Apple or Android phone using Bluetooth or Zigbee. Commission through the SmartThings app or Alexa and Google voice assistant apps. Once installed, controlling the lighting from your mobile device is simple and easy to customize lighting from on/off, fine-tuning the color temperatures (2700K to 5000K), dimming to set the mood, and grouping to control an entire lighting application at once.

FEATURES:

- Low profile integrated LED downlight, no housing required
- Residential and commercial applications including multi-family, hospitality, assisted living, dormitories and other multi-level construction
- Installs into wood joists or suspended ceilings with new construction pan
- IC rated for direct contact with insulation
- Dimmable to 1%. *Not for use with Wall Dimmers*



Catalog Number	UPC	Description	Replaces Up To	Lumens	Input Watts	CCT	CRI	Voltage	Finish	Pallet qty.
WF4C RD TUWH MW M6	194994450634	4" Smart Flat Wafer™ Downlight	65W Incandescent	850	10.6W	Tunable White (2700K to 5000K)	90	120V	White	576
WF6C RD TUWH MW M6	194994450641	6" Smart Flat Wafer™ Downlight	75W Incandescent	1000	13.5W	Tunable White (2700K to 5000K)	90	120V	White	540



Specifications

HOUSING:

Polycarbonate injection molded outer frame, with steel back plate • Non-conductive dead-front trim design suitable for a wide range of applications and codes requiring a non-conductive lens • FT4 3-pin plenum rated cable connector to connect from module to remote driver box • Steel spring clip for easy installation. 4" or 6" cut out template is provided to ensure a correct sized hole is cut into ceiling for proper installation of the trim. Size of hole should not exceed 4 1/4 inches (WF4C) or 6 1/4 inches (WF6C) for this product • Can be installed from 3/8" to 1 1/2" ceiling thickness • Can be removed from below the ceiling for service or replacement.

LED LIGHT ENGINE:

LEDs are integrated to one piece high purity aluminum, thermally conductive housing to provide uninterrupted heat transfer to ensure long life of the LED

- Tunable color temperature from 2700K to 5000K
- 90 CRI minimum
- Dimmable to 1%. *Not for use with Wall Dimmers.*

DRIVER:

Dedicated 120 volt replaceable driver • Accommodates 120 volts AC at 50/60Hz • Isolated driver integrated inside steel remote box with four 7/8" knockouts with slots for pryout • Suitable for pulling wires with the 12 cubic-inch wiring compartment to accommodate up to (6) 14 gauge insulated conductor or (4) 12 gauge insulated conductors, making the Wafer LED Downlights much easier to wire in 2in/2out (plus ground) daisy-chain applications and contractor friendly • Designed to provide 50,000 hours of life • 3-year warranty on LED components.

OPTICAL SYSTEM:

Computer-optimized reflector design with high reflectance white finish coupled with a high transmission diffusing lens conceals the LEDs • Efficient system that can produce over 850 lumens while using 10.6W (WF4C) or 1000 lumens while using 13.5W (WF6C) • Replaces 65W or 75W incandescent.

LIFE:

Rated for 50,000 hours at 70% lumen maintenance.

LABELS:

CSA certified to US and Canadian safety standards • ENERGY STAR® certified product • Suitable for wet location • Air-Loc certified in accordance with ASTM E283-2004 • NOM Certified • Can be used to comply with California Title 24 Part 6 High Efficacy LED light Source Requirements.

TESTING:

All reports are based on published industry procedures; field performance may differ from laboratory performance.

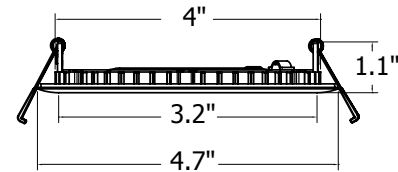
WARRANTY:

3-year limited warranty. This is the only warranty provided and no other statements in this specification sheet create any warranty of any kind. All other express and implied warranties are disclaimed. Complete warranty terms located at:

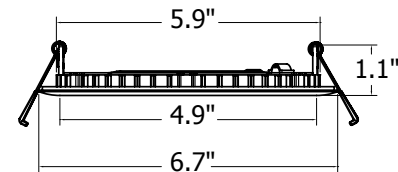
www.acuitybrands.com/support/warranty/terms-and-conditions

Note: Actual performance may differ as a result of end-user environment and application. All values are design or typical values, measured under laboratory conditions at 25 °C. Specifications subject to change without notice.

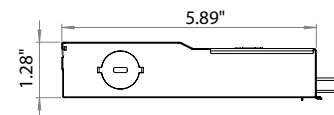
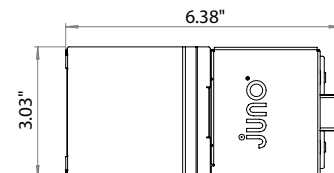
Dimensions



WF4C



WF6C



SPECIFICATIONS

	WF4C	WF6C
Aperture:	3.2"	4.9"
Ceiling Opening:	4.25"	6.25"
Overlap Trim:	4.7"	6.7"
Height:	1.1"	1.1"



Accessories: Order as separate catalog number.

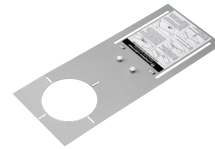
Series	
WF8643 PAN R6	Universal New Construction Pan, Retail Pack of 6
WF8643 PAN U	Universal New Construction Pan, Unit Pack
WF4 PAN R12	4" new construction pan, retail pack of 12
WF6 PAN R12	6" New construction pan, retail pack of 12
WF4GR MW JZ	4" round oversized goof ring
WF6GR MW JZ	6" round oversized trim ring
WEJB U	Remodel Joist Bar
WFEXC6 SW3PIN FT4	3-Pin 6ft Cable
WFEXC10 SW3PIN FT4	3-Pin 10ft Cable
WFEXC20 SW3PIN FT4	3-Pin 20ft Cable



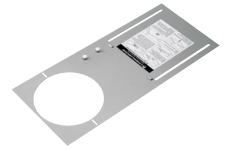
WF8643 UNIVERSAL
New Construction Pan



Remodel Joist Bar



WF4 PAN
4" New Construction Pan



WF6 PAN
6" New Construction Pan



WFEXCx
3-Pin Extension Cable