



D-Series Size 2

Amber Series Legacy LED Area Luminaire

d#series



Catalog Number

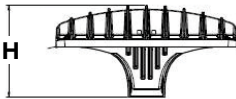
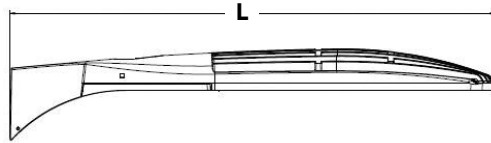
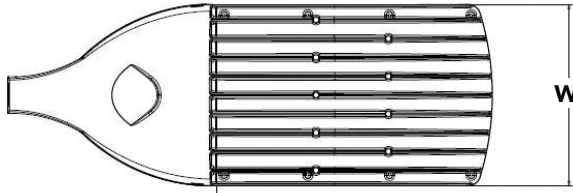
Notes

Type

Hit the Tab key or mouse over the page to see all interactive elements.

Specifications

EPA:	1.1 ft ² (0.10 m ²)
Length:	40" (101.6 cm)
Width:	15" (38.1 cm)
Height:	7-1/4" (18.4 cm)
Weight (max):	36 lbs (16.3 kg)



Introduction

The modern styling of the D-Series is striking yet unobtrusive - making bold, progressive statement event as it blends seamlessly with its environment.

The D-Series distills the benefits of the latest in LED technology into high performance, high efficacy, long-life luminaire. The outstanding photometric performance results in sites with excellent uniformity, greater pole spacing and lower density.

Ordering Information

EXAMPLE: DSX2 LED P4 AMBLW T3M MVOLT SPA DDBXD G1

Series	LEDs	Color temperature	Distribution	Voltage	Mounting (required)	
DSX2 LED	Forward optics P1 P4 P2 P5 P3 P6 Rotated optics P10 ¹ P12 ¹ P11 ¹	AMBLW Amber limited wavelength ² AMBPC Phosphor Converted Amber	T1S Type I Short T2S Type II Short T2M Type II Medium T3S Type III Short T3M Type III Medium T4M Type IV Medium TFTM Forward Throw Medium	T5VS Type V Very Short ³ T5S Type V Short ³ T5M Type V Medium ³ T5W Type V Wide ³ BLC Backlight Control LCCO Left Corner Cutoff RCCO Right Corner Cutoff	MVOLT ⁴ 120 ⁵ 208 ⁵ 240 ⁵ 277 ⁵ 347 ⁵ 480 ⁵	Shipped included SPA Square pole mounting RPA Round pole mounting WBA Wall bracket ³ SPUMBA Square pole universal mounting adaptor ⁵ RPUMBA Round pole universal mounting adaptor ⁵ Shipped separately KMA8 DDBXD U Mast arm mounting bracket adaptor (specify finish) ⁷

Control options	Other options	Finish (required)	Generation (required)
Shipped installed NLTAIR2 nLight AIR generation 2 enabled ⁸ PIRHN Network, Bi-Level motion/ambient sensor ⁹ PER NEMA twist-lock receptacle only (no controls) ¹⁰ PER5 Five-wire receptacle only (no controls) ^{10,11} PER7 Seven-wire receptacle only (no controls) ^{10,11}	Shipped installed HS House-side shield ¹⁷ SF Single fuse (120, 277, 347V) ⁵ DF Double fuse (208, 240, 480V) ⁵ L90 Left rotated optics ¹ R90 Right rotated optics ¹ BAA Buy America(n) Act Compliant Shipped separately BS Bird spikes ¹⁸ EGS External glare shield	DDBXD Dark bronze DBLXD Black DNAXD Natural aluminum DWHXD White DDBTXD Textured dark bronze DBL BXD Textured black DNATXD Textured natural aluminum DWHGXD Textured white	G1 Generation 1

Ordering Information

Accessories

Ordered and shipped separately.

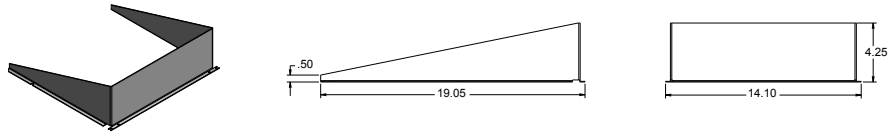
DLL127F 1.5 JU	Photocell - SSL twist-lock (120-277V) ¹⁹
DLL347F 1.5 CUL JU	Photocell - SSL twist-lock (347V) ¹⁹
DLL480F 1.5 CUL JU	Photocell - SSL twist-lock (480V) ¹⁹
DSHORT SBK U	Shorting cap ¹⁹
DSX2HS 80C U G1	House-side shield for P1, P2, P3, P4 and P5. ¹⁷
DSX2HS 90C U G1	House-side shield for P6 and P7. ¹⁷
DSX2HS 100C U G1	House-side shield for P8, P9, P10, P11 and P12. ¹⁷
PUMBA DDBXD U G1*	Square and round pole universal mounting bracket (specify finish) ²⁰
KMA8 DDBXD U	Mast arm mounting bracket adaptor (specify finish) ⁷

For more control options, visit [DTL](#) and [ROAM](#) online.

NOTES

- P10, P11 or P12 must have L90 or R90.
- AMBLW only available in P1, P4 and P10.
- Any Type 5 distribution, is not available with WBA.
- MVOLT driver operates on any line voltage from 120-277V (50/60 Hz).
- Single fuse (SF) requires 120V, 277V or 347V. Double fuse (DF) requires 208V, 240V or 480V.
- Universal mounting bracket intended for retrofit on existing pre-drilled poles only. 1.5 G vibration load rating per ANCI C136.31.
- Must order fixture with SPA option. KMA8 must be ordered as a separate accessory; see Accessories information. For use with 2-3/8" mast arm (not included).
- Must be ordered with PIRHN. Sensor cover only available in dark bronze, black, white or natural aluminum color
- Must be ordered with NLTAIR2. For more information on nLight Air 2 visit [this link](#).
- Photocell ordered and shipped as a separate line item from Acuity Brands Controls. See accessories. Not available with DS option. Shorting Cap included.
- If ROAM[®] node required, it must be ordered and shipped as a separate line item from Acuity Brands Controls. Node with integral dimming. Shorting Cap included.
- DMG not available with PIRHN, PER5, PER7, PIRH, PIRH1FC3V, PIRH1FC3V or FAO.
- Provides 50/50 fixture operation via (2) independent drivers. Not available with PER, PER5, PER7, PIR or PIRH. Not available with P1, P2 and P10.
- Requires (2) separately switched circuits.
- Reference controls options table on page 4.
- Not available with other dimming controls options.
- Not available with BLC, LCCO and RCCO distribution. Also available as a separate accessory; see Accessories information.
- Must be ordered with fixture for factory pre-drilling.
- Requires luminaire to be specified with PER, PER5 or PER7 option.
- For retrofit use only. Only usable when pole's drill pattern is NOT Lithonia template #8.

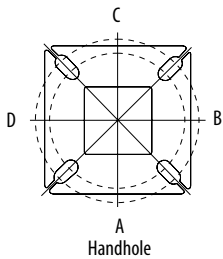
External Glare Shield



Drilling

Tenon Mounting Slipfitter**

HANDHOLE ORIENTATION

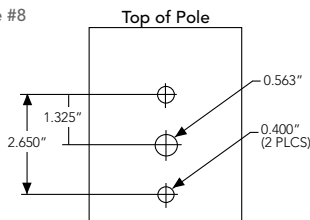


Tenon O.D.	Mounting	Single Unit	2 @ 180	2 @ 90	3 @ 120	3 @ 90	4 @ 90
2-3/8"	SPA/RPA	AS3-5 190	AS3-5 280	AS3-5 290	AS3-5 320	AS3-5 390	AS3-5 490
	SPUMBA	AS3-5 190	AS3-5 280	AS4-5 290	AS3-5 320	AS4-5 390	AS4-5 490
	RUPUMBA	AS3-5 190	AS3-5 280		AS3-5 320		
2-7/8"	SPA/RPA	AST25-190	AST25-280	AST25-290	AST25-320	AST25-390	AST25-490
	SPUMBA	AST25-190	AST25-280		AST25-320		
	RUPUMBA	AST25-190	AST25-280		AST25-320		
4"	SPA/RPA	AST35-190	AST35-280	AST35-290	AST35-320	AST35-390	AST35-490
	SPUMBA	AST35-190	AST35-280	AST35-290	AST35-320	AST35-390	AST35-490
	RUPUMBA	AST35-190	AST35-280		AST35-320		

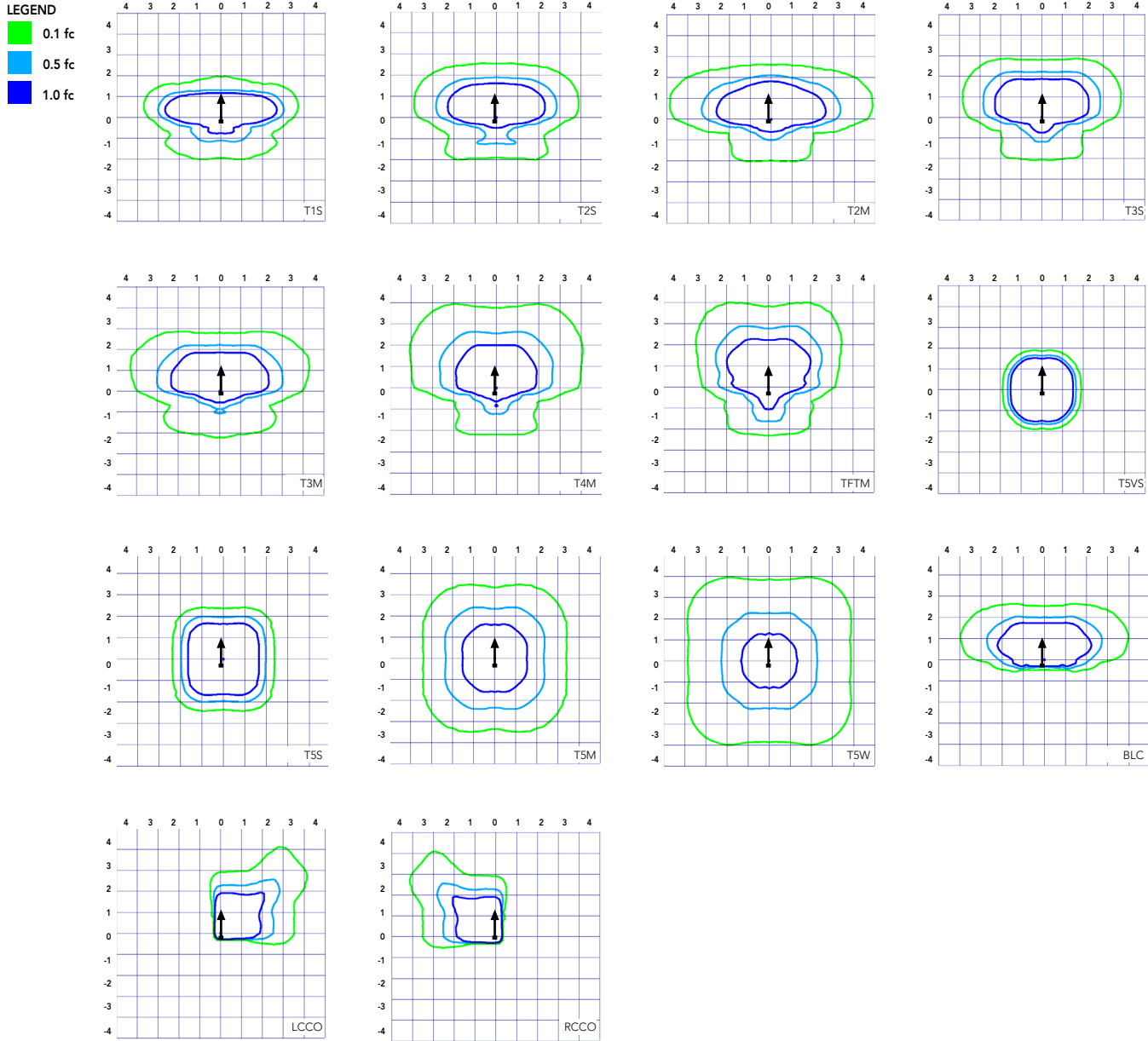
Mounting Option	Drilling Template	Single	2 @ 180	2 @ 90	3 @ 90	3 @ 120	4 @ 90
Head Location		Side B	Side B & D	Side B & C	Side B, C & D	Round Pole Only	Side A, B, C & D
Drill Nomenclature	#8	DM19AS	DM28AS	DM29AS	DM39AS	DM32AS	DM49AS

	Drilling Template	Minimum Acceptable Outside Pole Dimension					
SPA	#8	2-7/8"	2-7/8"	3.5"	3.5"	3"	3.5"
RPA	#8	2-7/8"	2-7/8"	3.5"	3.5"	3"	3.5"
SPUMBA	#5	2-7/8"	3"	4"	4"	3.5"	4"
RPUMBA	#5	2-7/8"	3.5"	5"	5"	3.5"	5"

Template #8



Isofootcandle plots for the DSX2 LED G1. Distances are in units of mounting height (30').



Performance Data

FORWARD OPTICS

Performance Package	LED Count	Drive Current	Distribution Type	AMBPC (Phosphor Converted)					
				System Watts	Lumens	B	U	G	LPW
P1	80	530	140	T1S	11,816	2	0	2	84
				T2M	11,804	2	0	2	84
				T2S	11,865	2	0	2	85
				T3M	11,491	2	0	2	82
				T3S	11,836	2	0	2	85
				T4M	11,579	2	0	3	83
				TFTM	11,829	2	0	2	84
				T5VS	12,302	3	0	1	88
				T5S	12,312	3	0	1	88
				T5M	12,281	4	0	2	88
				T5W	12,201	4	0	3	87
				BLC	9,698	1	0	2	69
				LCCO	7,215	1	0	3	52
				RCCO	7,215	1	0	3	52

System Watts	AMBLW (Limited Wavelength)				
	Lumens	B	U	G	LPW
101	5,965	1	0	1	59
	5,959	1	0	2	59
	5,990	1	0	1	59
	5,801	1	0	2	57
	5,975	1	0	2	59
	5,845	1	0	2	58
	5,971	1	0	2	59
	6,210	2	0	0	61
	6,215	2	0	0	62
	6,200	3	0	1	61
	6,159	3	0	2	61
	4,896	1	0	1	48
	3,642	1	0	2	36
	3,642	1	0	2	36

P2	80	700	185	T1S	14,997	3	0	3	81
				T2M	14,981	3	0	3	81
				T2S	15,059	3	0	3	81
				T3M	14,583	3	0	3	79
				T3S	15,022	2	0	3	81
				T4M	14,695	3	0	3	79
				TFTM	15,012	2	0	3	81
				T5VS	15,613	4	0	1	84
				T5S	15,626	3	0	1	84
				T5M	15,587	4	0	2	84
				T5W	15,485	4	0	3	84
				BLC	12,308	1	0	2	67
				LCCO	9,157	1	0	3	49
				RCCO	9,157	1	0	3	49

P3	80	1050	255	T1S	20,558	3	0	3	81
				T2M	20,536	3	0	3	81
				T2S	20,643	3	0	3	81
				T3M	19,991	3	0	3	78
				T3S	20,592	3	0	3	81
				T4M	20,145	3	0	4	79
				TFTM	20,579	3	0	4	81
				T5VS	21,403	4	0	1	84
				T5S	21,420	4	0	2	84
				T5M	21,366	5	0	3	84
				T5W	21,226	5	0	3	83
				BLC	16,872	2	0	3	66
				LCCO	12,552	2	0	3	49
				RCCO	12,552	2	0	3	49

Performance Data

FORWARD OPTICS

Performance Package	LED Count	Drive Current	Distribution Type	AMBPC (Phosphor Converted)					
				System Watts	Lumens	B	U	G	LPW
P4	100	530	170	T1S	15,975	3	0	3	94
				T2M	15,957	3	0	3	94
				T2S	16,041	3	0	3	94
				T3M	15,534	3	0	3	91
				T3S	16,001	3	0	3	94
				T4M	15,654	3	0	3	92
				TFTM	15,991	3	0	3	94
				T5VS	16,632	4	0	1	98
				T5S	16,645	4	0	1	98
				T5M	16,603	4	0	2	98
				T5W	16,494	4	0	3	97
				BLC	13,111	1	0	2	77
				LCCO	9,754	1	0	3	57
				RCCO	9,754	1	0	3	57

System Watts	AMBLW (Limited Wavelength)				
	Lumens	B	U	G	LPW
132	7,281	2	0	2	55
	7,274	2	0	2	55
	7,311	2	0	2	55
	7,081	2	0	2	54
	7,293	1	0	2	55
	7,135	1	0	2	54
	7,289	1	0	2	55
	7,581	3	0	0	57
	7,587	2	0	1	57
	7,568	3	0	2	57
	7,518	3	0	2	57
	5,976	1	0	2	45
	4,446	1	0	2	34
	4,446	1	0	2	34

P5	100	700	224	T1S	19,912	3	0	3	89
				T2M	19,891	3	0	3	89
				T2S	19,994	3	0	3	89
				T3M	19,363	3	0	3	86
				T3S	19,945	3	0	3	89
				T4M	19,512	3	0	4	87
				TFTM	19,933	3	0	4	89
				T5VS	20,731	4	0	1	93
				T5S	20,747	4	0	2	93
				T5M	20,695	5	0	3	92
				T5W	20,560	5	0	3	92
				BLC	16,342	2	0	3	73
				LCCO	12,158	2	0	3	54
				RCCO	12,158	2	0	3	54

P6	100	1050	322	T1S	25,431	3	0	3	79
				T2M	25,404	3	0	4	79
				T2S	25,536	3	0	3	79
				T3M	24,730	3	0	4	77
				T3S	25,473	3	0	4	79
				T4M	24,920	3	0	4	77
				TFTM	25,457	3	0	4	79
				T5VS	26,477	5	0	1	82
				T5S	26,498	4	0	2	82
				T5M	26,431	5	0	3	82
				T5W	26,258	5	0	4	82
				BLC	20,872	2	0	3	65
				LCCO	15,527	2	0	4	48
				RCCO	15,527	2	0	4	48

Performance Data

ROTATED OPTICS

Performance Package	LED Count	Drive Current	Distribution Type	AMBPC (Phosphor Converted)					
				System Watts	Lumens	B	U	G	LPW
P10	90	530	156	T1S	13,247	3	0	3	85
				T2M	13,232	4	0	4	85
				T2S	13,301	3	0	3	85
				T3M	12,881	4	0	4	83
				T3S	13,268	4	0	4	85
				T4M	12,980	4	0	4	83
				TFTM	13,260	4	0	4	85
				T5VS	13,791	4	0	1	88
				T5S	13,802	3	0	1	88
				T5M	13,768	4	0	2	88
				T5W	13,677	4	0	3	88
				BLC	10,872	3	0	3	70
				LCCO	8,088	1	0	3	52
				RCCO	8,077	4	0	4	52

System Watts	AMBLW (Limited Wavelength)				
	Lumens	B	U	G	LPW
115	6,691	2	0	2	58
	6,684	3	0	3	58
	6,719	3	0	3	58
	6,507	3	0	3	57
	6,702	3	0	3	58
	6,557	3	0	3	57
	6,698	3	0	3	58
	6,918	3	0	0	60
	6,988	2	0	1	61
	6,954	3	0	1	60
	6,909	3	0	2	60
	5,492	2	0	2	48
	4,085	1	0	2	36
	4,080	3	0	3	35

P11	90	700	207	T1S	16,779	3	0	3	81
				T2M	16,761	4	0	4	81
				T2S	16,848	4	0	4	81
				T3M	16,316	4	0	4	79
				T3S	16,807	4	0	4	81
				T4M	16,442	4	0	4	79
				TFTM	16,796	4	0	4	81
				T5VS	17,469	4	0	1	84
				T5S	17,483	4	0	2	84
				T5M	17,439	4	0	2	84
				T5W	17,325	5	0	3	84
				BLC	13,771	3	0	3	67
				LCCO	10,245	1	0	3	49
				RCCO	10,231	4	0	4	49

P12	90	1050	291	T1S	22,880	4	0	4	79
				T2M	22,855	4	0	4	79
				T2S	22,974	4	0	4	79
				T3M	22,249	4	0	4	76
				T3S	22,917	4	0	4	79
				T4M	22,420	5	0	5	77
				TFTM	22,903	5	0	5	79
				T5VS	23,820	5	0	1	82
				T5S	23,839	4	0	2	82
				T5M	23,780	5	0	3	82
				T5W	23,624	5	0	4	81
				BLC	18,778	4	0	4	65
				LCCO	13,970	2	0	3	48
				RCCO	13,951	4	0	4	48

Performance Data

Motion Sensor Default Settings

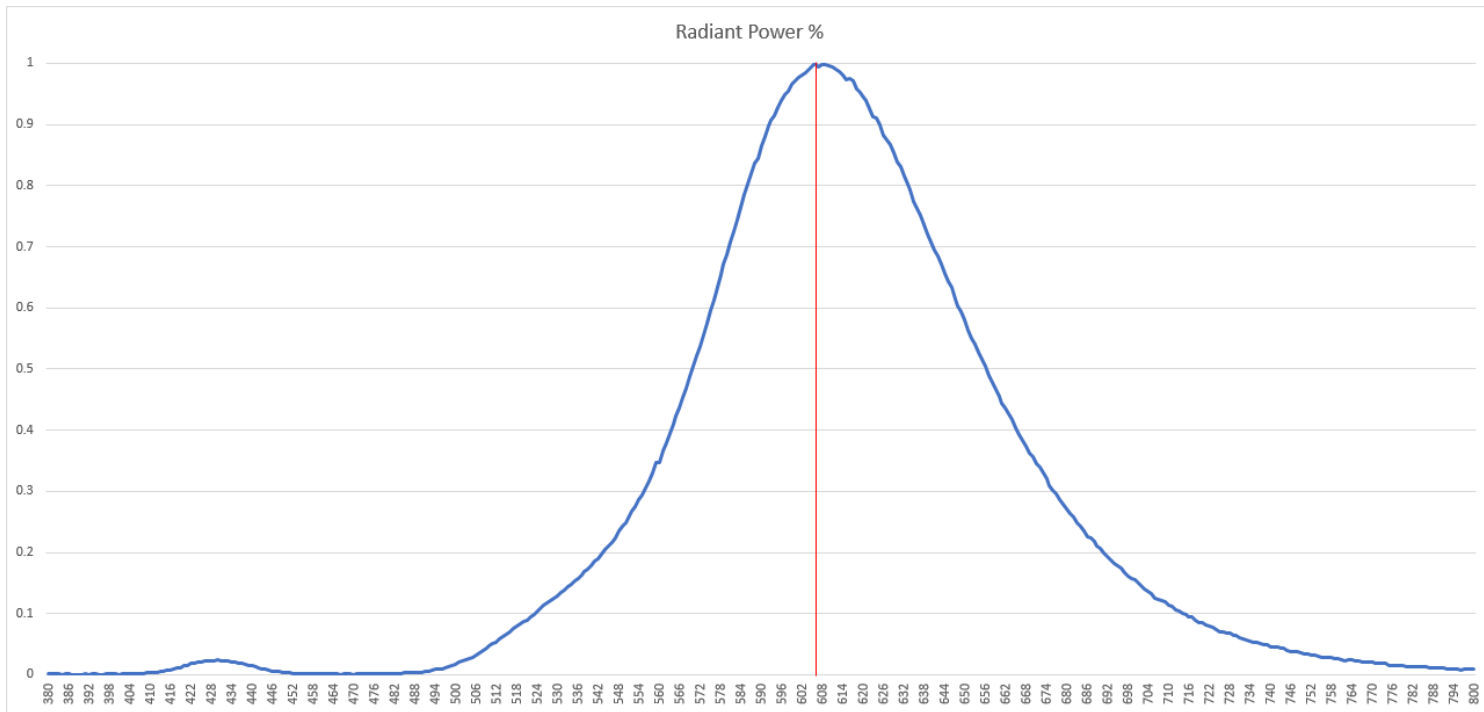
Option	Dimmed State	High Level (when triggered)	Photocell Operation	Dwell Time	Ramp-up Time	Ramp-down Time
PIR or PIRH	3V (37%) Output	10V (100%) Output	Enabled @ 5FC	5 min	3 sec	5 min
*PIR1FC3V or PIRH1FC3V	3V (37%) Output	10V (100%) Output	Enabled @ 1FC	5 min	3 sec	5 min

*For use when motion sensor is used as dusk to dawn control

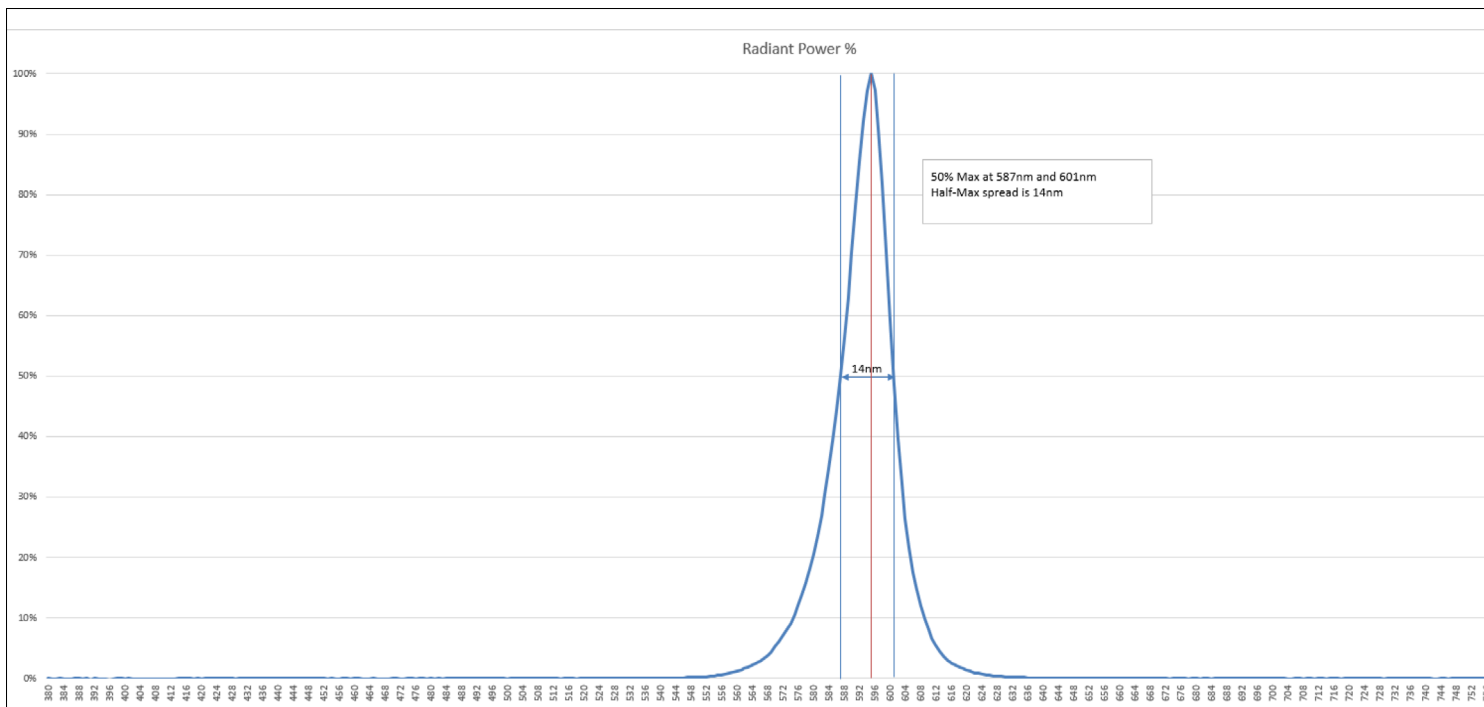
Controls Options

Nomenclature	Description	Functionality	Primary control device	Notes
FAO	Field adjustable output device installed inside the luminaire; wired to the driver dimming leads.	Allows the luminaire to be manually dimmed, effectively trimming the light output.	FAO device	Cannot be used with other controls options that need the 0-10V leads
DS	Drivers wired independantly for 50/50 luminaire operation	The luminaire is wired to two separate circuits, allowing for 50/50 operation.	Independently wired drivers	Requires two seperately switched circuits. Consider nLight AIR as a more cost effective alternative.
PER5 or PER7	Twist-lock photocell recepticle	Compatible with standard twist-lock photocells for dusk to dawn operation, or advanced control nodes that provide 0-10V dimming signals.	Twist-lock photocells such as DLL Elite or advanced control nodes such as ROAM.	Pins 4 & 5 to dimming leads on driver, Pins 6 & 7 are capped inside luminaire
PIR or PIRH	Motion sensors with integral photocell. PIR for 8-15' mounting; PIRH for 15-30' mounting	Luminaires dim when no occupancy is detected.	Acuity Controls SBOR	Also available with PIRH1FC3V when the sensor photocell is used for dusk-to-dawn operation.
NLTAIR2 PIRHN	nLight AIR enabled luminaire for motion sensing, photocell and wireless communication.	Motion and ambient light sensing with group response. Scheduled dimming with motion sensor over-ride when wirelessly connected to the nLight Eclipse.	nLight Air rSDGR	nLight AIR sensors can be programmed and commissioned from the ground using the ClAIRity Pro app.

AMBPC - Phosphor Converted Amber



AMBLW - True Limited Wavelength Amber



FEATURES & SPECIFICATIONS

INTENDED USE

The sleek design of the D-Series Area Size 2 reflects the embedded high performance LED technology. It is ideal for applications like car dealerships and large parking lots adjacent to malls, transit stations, grocery stores, home centers, and other big-box retailers.

CONSTRUCTION

Single-piece die-cast aluminum housing has integral heat sink fins to optimize thermal management through conductive and convective cooling. Modular design allows for ease of maintenance and future light engine upgrades. The LED drivers are mounted in direct contact with the casting to promote low operating temperature and long life. Housing is completely sealed against moisture and environmental contaminants (IP65). Low EPA (1.1 ft²) for optimized pole wind loading.

FINISH

Exterior parts are protected by a zinc-infused Super Durable TGIC thermoset powder coat finish that provides superior resistance to corrosion and weathering. A tightly controlled multi-stage process ensures a minimum 3 mils thickness for a finish that can withstand extreme climate changes without cracking or peeling. Available in both textured and non-textured finishes.

OPTICS

Precision-molded proprietary acrylic lenses are engineered for superior area lighting distribution, uniformity, and pole spacing. The D-Series Size 2 has zero uplight and qualifies as a Nighttime Friendly™ product, meaning it is consistent with the LEED® and Green Globes™ criteria for eliminating wasteful uplight.

ELECTRICAL

Light engine configurations consist of high-efficacy LEDs mounted to metal-core circuit boards to maximize heat dissipation and promote long life. Class 1 electronic drivers are designed to have a power factor >90%, THD <20%, and an expected life of 100,000 hours with <1% failure rate. Easily-serviceable 10kV surge protection device meets a minimum Category C Low operation (per ANSI/IEEE C62.41.2).

INSTALLATION

Included mounting block and integral arm facilitate quick and easy installation. Stainless steel bolts fasten the mounting block securely to poles and walls, enabling the D-Series Size 2 to withstand up to a 2.0 G vibration load rating per ANSI C136.31. The D-Series Size 2 utilizes the AERIS™ series pole drilling pattern (Template #8). NEMA photocontrol receptacle is available.

LISTINGS

UL Listed for wet locations. Light engines are IP66 rated; luminaire is IP65 rated. Rated for -40°C minimum ambient. U.S. Patent No. D670,857 S. International patent pending.

International Dark-Sky Association (IDA) Fixture Seal of Approval (FSA) is available for all products on this page utilizing 2700K and 3000K color temperature only.

BUY AMERICAN ACT

Product with the BAA option is assembled in the USA and meets the Buy America(n) government procurement requirements under FAR, DFARS and DOT regulations. Please refer to www.acuitybrands.com/buy-american for additional information.

WARRANTY

5-year limited warranty. This is the only warranty provided and no other statements in this specification sheet create any warranty of any kind. All other express and implied warranties are disclaimed. Complete warranty terms located at: www.acuitybrands.com/support/warranty/terms-and-conditions

Note: Actual performance may differ as a result of end-user environment and application. All values are design or typical values, measured under laboratory conditions at 25°C. Specifications subject to change without notice.

