



Catalog Number
Notes
Type

Contractor Select™

JFX

Tapelight

JFX Tapelight is versatile system capable of being used in task or accent lighting in commercial, retail, hospitality, residential and outdoor setting. When used with an extrusion to create an enclosure, the overall height of the enclosure is less than 0.5" thick, which makes this tapelight ideal for being hidden underneath cabinets for tight wall features.

FEATURES:

- Available in 16.4 and 100 foot reel lengths
- Pick from 2700K or 3000K
- Linkable end to end
- 3M adhesive rated for multiple working surfaces such as: metals, woods and plastics



JFX TAPELIGHT

Catalog Number	UPC	Description	Volts	Lumens	Reel Length	CCT	CRI	Pallet qty.
JFX 24V 200LM 16FT 27K 90CRI DL M60	196182350863	JFX 200 Lumen, 2700K, 16 Foot Reel, Damp Location	24V	200	16.4FT	2700K	90	960
JFX 24V 200LM 16FT 30K 90CRI DL M60	196182350894	JFX 200 Lumen, 3000K, 16 Foot Reel, Damp Location	24V	200	16.4FT	3000K	90	960
JFX 24V 200LM 100FT 27K 90CRI DL M15	196182350917	JFX 200 Lumen, 2700K, 100 Foot Reel, Damp Location	24V	200	100FT	2700K	90	540
JFX 24V 200LM 100FT 30K 90CRI DL M15	196182351013	JFX 200 Lumen, 3000K, 100 Foot Reel, Damp Location	24V	200	100FT	3000K	90	540
JFX 24V 300LM 16FT 30K 90CRI DL M60	196182351105	JFX 300 Lumen, 16 Foot Reel, 3000K, Damp Location	24V	300	16.4FT	3000K	90	960
JFX 24V 300LM 100FT 30K 90CRI DL M15	196182351051	JFX 300 Lumen, 100 Foot Reel, 3000K, Damp Location	24V	300	16.4FT	3000K	90	540

JFX DRIVERS

Catalog Number	Description	UPC
JFXDRV 120VAC MLV 40W M20	Line Voltage Dimmable Driver	196182351136
JFXDRV 120VAC MLV 60W M20	Line Voltage Dimmable Driver	196182351198
JFXDRV 120VAC MLV 96W M12	Line Voltage Dimmable Driver	196182351211

Accessories: Order as separate catalog number.

Catalog Number	Description	UPC
JFX SLCH M50	Slim Channel	196182351228
JFX CNT M600	Connector	196182351235

END CAPS AND HARDWARE

Catalog Number	Description	UPC
RK4JFX SLCH HRDWKIT M200	Extrusion hardware kit with clips (2), screws (2), and end caps (1 each)	196183697257



Specifications

INTENDED USE:

JFX Tapelight is a versatile system capable of being used in task or accent lighting in commercial, retail, hospitality, residential and outdoor settings. This system is ideal for linear run lengths up to 40ft of continuous illumination. When used with an extrusion to create an enclosure, the overall height of the enclosure is less than 0.5" thick, which makes this tapelight ideal for being hidden underneath cabinets or in tight wall features. A LED population of up to 36 LED's per foot means uniform illumination even without the use of a diffuser. JFX Tapelight keeps the installation easy with NEC rated junction boxes included with all drivers.

CONSTRUCTION:

Flexible JFX tapelight is manufactured with the highest quality PCB materials, components, and binning processes to ensure color and lumen consistency for a high-end professional installation. With up to 36 LED's per inch, JFX ensures illumination uniformity for tight space and hidden light source applications. Can be field cut at marked locations using standard steel office scissors for desired linear length.

ELECTRICAL:

JFX utilizes a 120VAC or MVOLT (120-277) drivers at 50/60Hz. All drivers provide a constant voltage output of 24VDC. Driver should be loaded to 80% maximum (i.e. 32W for 40W model). Driver should be loaded to minimum 20% for full range dimming and for On/Off (i.e. 8W for 32W model). -22c to +70c ambient. Refer to primary spec sheet for additional electrical specifications.

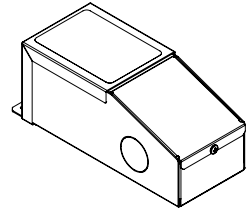
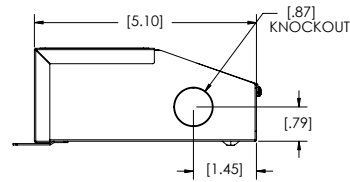
WARRANTY:

5-year limited warranty. This is the only warranty provided and no other statements in this specification sheet create any warranty of any kind. All other express and implied warranties are disclaimed. Complete warranty terms located at: www.acuitybrands.com/support/warranty/terms-and-conditions

Note: Actual performance may differ as a result of end-user environment and application. All values are design or typical values, measured under laboratory conditions at 25 °C. Specifications subject to change without notice.

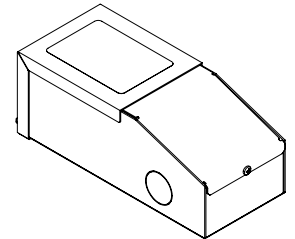
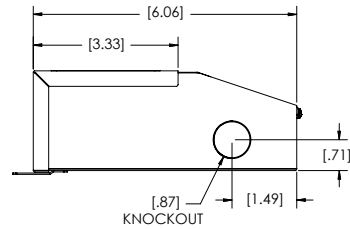
Driver Dimensions

JFXDRV 40W



Enclosure Box	
Length:	5.10"
Width:	2.24"
Height:	2.23"

JFXDRV 60W / 96W



Enclosure Box	
Length:	6.06"
Width:	2.68"
Height:	2.37"