

RetroBasics™ LED Trim Kits

Economical downlight solutions that can be universally used in both residential new construction and renovation



Switchable Downlight



Smart Downlight



Adjustable Switchable/
Smart Downlight

Juno® RetroBasics™ Family

The RetroBasics LED family by Juno® provides the most economical solutions for efficiently lighting a space using LED technology with virtually zero maintenance. Available in 4" and 5/6" sizes, the RetroBasics downlight family offers a smart solution that features RGBW for color changing functionality as well as tunable white for everyday applications. The 5CCT switchable solution features an LED color selection of 2700K to 5000K. The family consists of three styles and color finishes to cover to cover an array of applications: a smooth trim, a baffle trim (switchable version only), and an adjustable version ultimately providing a solution for every room of a home.



Complete Family Offering to Mix and Match in Your Space

Switchable Downlights

Color Finish Options



4" Smooth Trim



5/6" Smooth Trim



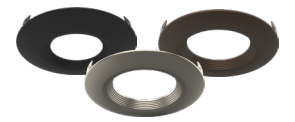
4" & 5/6" Smooth Trim Inserts



4" Baffle Trim



5/6" Baffle Trim



4" & 5/6" Baffle Trim Inserts



4" Adjustable Trim



5/6" Adjustable Trim



4" & 5/6" Adjustable Trims

Smart Downlights

Color Finish Options



4" Smart Smooth Trim



5/6" Smart Smooth Trim



4" & 5/6" Smart Smooth Trim Inserts



4" Smart Adjustable Trim



5/6" Smart Adjustable Trim

Switchable RetroBasics Downlight

The Switchable RetroBasics Downlight is the perfect solution for any residential or light commercial setting. Available in 4" and 5/6" sizes, the Switchable RetroBasics Downlight is designed to replace legacy style incandescent products in existing housings or pairs perfectly with the new [Quick Connect Housing](#) by Juno® for a low-cost LED downlight solution. With a practical, functional design, the LED trim kit is available in a smooth trim option for a more modern aesthetic and a baffle trim option for a traditional aesthetic.

Pre-Installed Retention Springs

Designed to fit into most recessed housings, the 4" trims install with friction springs while the 5/6" trims are provided with adjustable torsion springs.

IC Rated

For use with housings installed in direct contact with insulation.

Switchable White Technology

Tactile slider switch integrated into trim allowing for easy color adjustments between 5 color temperature options (2700K, 3000K, 3500K, 4000K, or 5000K).

Practical, Functional Trim

Non-conductive, thermal plastic trim. Ideal for dead front applications.

Quick Connect Plug

For easy electrical connection from trim to housing in seconds.

All-in-One Design

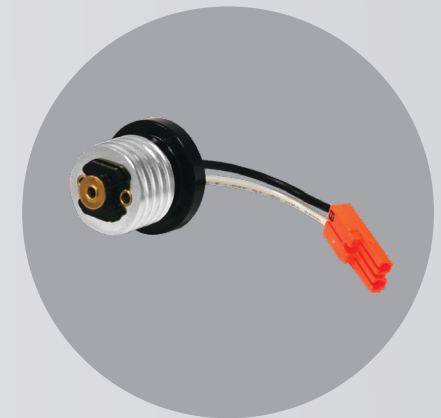
Electronics are integrated into trim replacing the existing lamp & trim.

Aesthetics

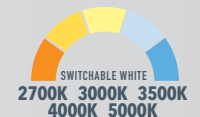
Easy field installable color finish inserts available to match any setting. Color finish inserts available in Matte Black, Bronze, and Satin Nickel paint



Easy connection with the Quick Connect Plug allows for easy electrical connection within housing.



Trim ships with socket whip for installations into housings with medium base sockets.



Switchable RetroBasics Adjustable

The Adjustable LED Trim Kit contains all of the same great features as the Switchable Downlight while providing a solution for accent lighting and wall washing in any room. The adjustable gimbal design provides up to 35° vertical aiming and horizontal adjustment to easily highlight focal points within a room as well as providing a solution for sloped ceilings. Available in 4" and 5/6" sizes, the Adjustable Downlight also features a regressed lens to aid in glare control while giving the product a more traditional aesthetic.

Features:

Switchable White Technology

Tactile slider integrated into trim allows for easy color adjustments between 5 color temperature options (2700K, 3000K, 3500K, 4000K, or 5000K).

Adjustability

Gimbal design provides 35° vertical aiming. The 4" trim installs easily using friction springs to allow for aiming at any position in the housing. The 5/6" Adjustable Downlight has 359° horizontal rotation.

IC Rated

For use with housings installed in direct contact with insulation.

Quick Connect Plug

For easy electrical connection from trim to housing in seconds.



Adjustable gimbal design provides 35° vertical aiming. Perfect for accent lighting and wall washing in any room.



4" Adjustable



5/6" Adjustable



Matte Black



Bronze



Stain Nickel Paint



Smart RetroBasics

The Smart LED Trim Kit with RGBW color changing functionality is the perfect way to get connected with a smart home lighting solution. Once connected to the smart home platform via Bluetooth or Zigbee, the Smart RetroBasics LED trims can be controlled either via voice command, time schedules, or with the app. Compatible apps and smart home hubs include Amazon® Alexa, Google Home or Samsung® SmartThings. Once installed, easily control and customize your lighting to on/off, fine-tune the color temperatures from a soft white 2700K to daylight 5000K or choose from a full color spectrum of RGB color options. Plus, dimming to 1% (perfect for use as a nightlight) and grouping capabilities for unlimited smart home automation.

Features:

Smart Home Lighting Solutions

Control lighting via voice control or App from virtually anywhere.

Easy Set-up with or without a Hub

Via Bluetooth or Zigbee to work with smart home platforms Amazon® Alexa, Google Home, and Samsung® SmartThings.

Smart Control

Customize lighting from on/off, fine-tuning the color temperatures (2700K to 5000K) or RGB for full color spectrum options, dimming to set the mood, and grouping to control and entire lighting application at once.

Personalization

Control individually or create zones using a simple App.

Easy Installation and Serviceability

All-in-one design where electronics are integrated into trim replaces the existing lamp and trim.

Wet Location and IC Rated

Perfect for showers, bathrooms, and outdoor soffits and for use with housings installed in direct contact with installation.

Note: Pairs perfectly with Juno Quick Connect New Construction & Remodel LED Housing.

Adjustable gimbal design provides 35° vertical aiming. Perfect for accent lighting and wall washing in any room.



4" Adjustable Trim



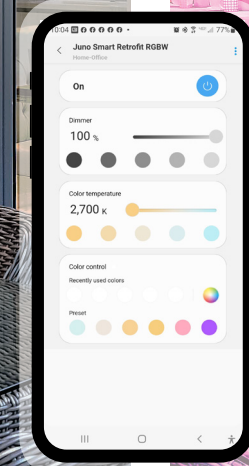
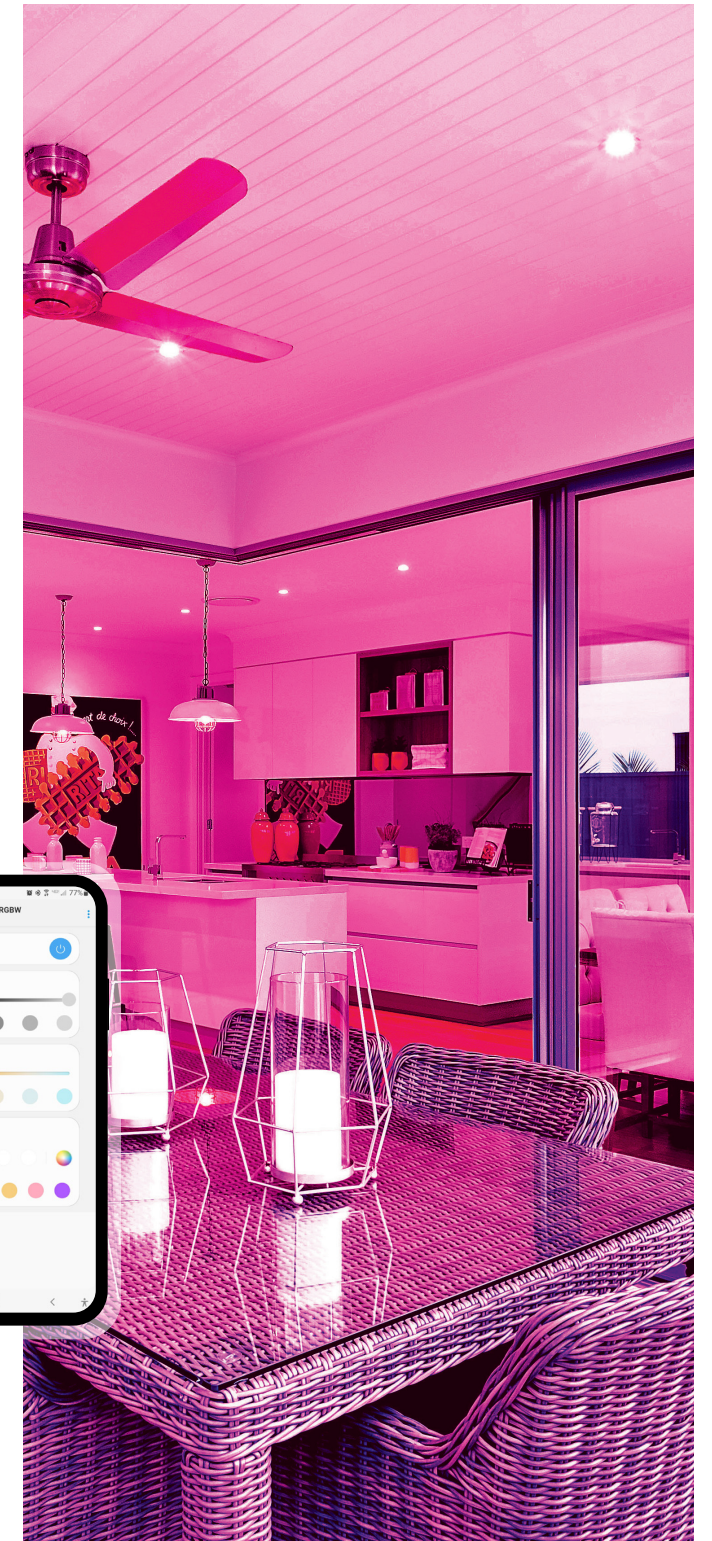
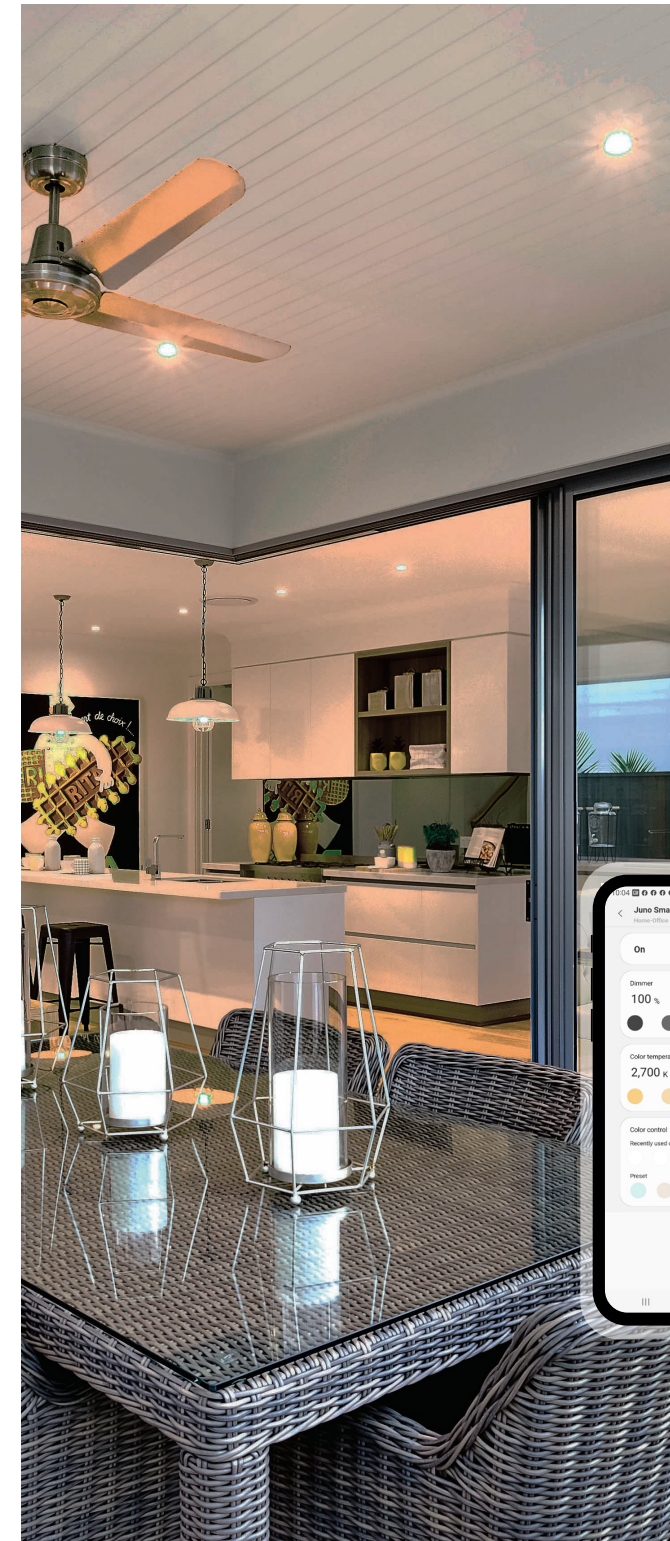
5/6" Adjustable Trim



Fine tune color temperatures 2700K (soft white) - 5000K (daylight),

OR

RGB for full color spectrum options



Ordering Information

Switchable Downlights

Switchable RetroBasics

4" Switchable Downlight and Adjustable

Series	Color Temperature	Finish	Packaging
RB4 RetroBasics 4" Baffle	SWW5 Switchable White (2700K, 3000K, 3500K, 4000K, 5000K)	MW Matte White	M6 Master Pack - Individually Packed CP6 M2 Contractor Packs - 1 box with 6 units, not individually boxed
RB4S RetroBasics 4" Smooth		MB¹ Matte Black	
RB4A RetroBasics 4" Adjustable		BRZ¹ Bronze SNP¹ Satin Nickel	
Series	Color Temperature	Finish	Packaging
RB56 RetroBasics 5/6" Baffle	SWW5 Switchable White (2700K, 3000K, 3500K, 4000K, 5000K)	MW Matte White	M6 Master Pack - Individually Packed CP6 M2 Contractor Packs - 1 box with 6 units, not individually boxed
RB56S RetroBasics 5/6" Smooth		MB¹ Matte Black	
RB56A RetroBasics 5/6" Adjustable		BRZ¹ Bronze SNP¹ Satin Nickel	

*Matte Black, Bronze and Satin Nickel Color Finish Trim Inserts are available in Baffle and Smooth Trims, see spec sheet for ordering details.

¹ Only available with the Adjustable Series.



Smart Downlights

Smart RetroBasics

4" Smart Downlight and Adjustable

Series	Color Temperature	Finish	Options	Packaging
RB4SC RetroBasics 4" Smooth	RGBW Tunable White (2700K to 5000K) + RGB Colors	MW Matte White	L/SKTWHIP No E26 Adapter (CA only) ¹	M6 Master Pack - Individually Packed
RB4AC RetroBasics 4" Adjustable		See Spec Sheet for additional color finish options		

5/6" Smart Downlight and Adjustable

Series	Color Temperature	Finish	Options	Packaging
RB56SC RetroBasics 5/6" Smooth	RGBW Tunable White (2700K to 5000K) + RGB Colors	MW Matte White	L/SKTWHIP No E26 Adapter (CA only) ¹	M6 Master Pack - Individually Packed CP4 M2² Contractor Packs - 1 box with 4 units, not individually boxed
RB56AC RetroBasics 5/6" Adjustable		See Spec Sheet for additional color finish options		

*Matte Black, Bronze and Satin Nickel Color Finish Trim Inserts are available in Baffle and Smooth Trims for downlight version, see spec sheet for ordering details.

¹ L/SKTWHIP must be selected for product shipping to California.

² Only available with RB56SC downlight.



Compatible Housings

Pairs perfectly with Juno® Quick Connect Housings for a complete low-cost downlight solution. Order housings separately.



[QC New Construction Housing](#)
QC4, QC5, QC6



[QC Remodel Housing](#)
QC4R, QC5R, QC6R

Need a Fire-Rated Housing Solution? No problem, pair with the FireWall™ Quick Connect LED Housing by Juno®



[IC1FW LEDT24](#)

