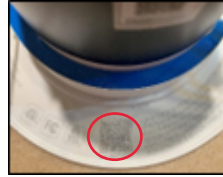




# Juno Smart Speaker Light Quick Start Guide

## Step 1: Fixture Installation

- 1 Install the J6SLC Smart Speaker Light into a 6" recessed can housing. Scan QR Code from the back of the flange to follow detailed instructions for either a new construction or retrofit installation.



## Juno Smart Speaker Light Connectivity Options (choose one)

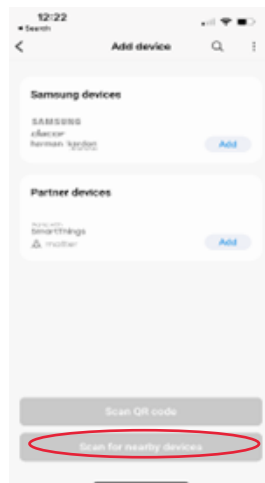
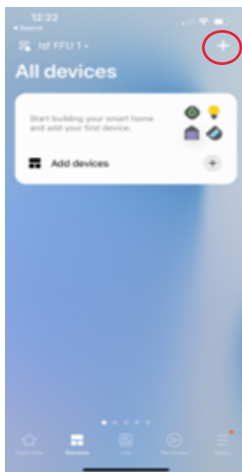
### Step 2: Choose Connectivity Option

#### A Single Smart Speaker Light Operation with Standard Wall Switch

- Out of box operation without Smart Home Integration.
- Basic on/off from the wall switch, light turns on at 3000K for 100% brightness only. (note: dimming is not compatible with wall switch).
- User selects "Juno Speaker" from their phone Bluetooth list.
- Music playback is now available for all music services available to phone.
- Volume up/down, pause, play, next song, previous song controlled by phone.

#### B SmartThings Direct to Phone (D2D)

- Using an iOS or Android phone, add Speaker Light with SmartThings app. Click "+" then "Scan for New Devices".
- Allows lighting controls without the use of a hub.
- On/off, dim, CCT, RGB are available to user.
- Speaker Functions work identical to the Single Speaker Setup.





# Juno Smart Speaker Light Quick Start Guide

## Connectivity Options Continued

### C SmartThings Hub Option to Expand Functionality & Group Lighting Control



- Using an iOS or Android phone, add Speaker Light with SmartThings app. Click "+" then "Scan for New Devices".
- Expands Smart Home Connectivity: On/off, dim, CCT, RGB, remote connectivity, group control, scenes and schedules are available to user.
- Alexa and Google Home can be linked for voice control.
- Speaker Functions work identical to the Single Speaker Setup.



### D Google Home Direct Connection

- Requires the use of a Google Home Speaker. For set-up, select "set up device" > "new devices".
- Google is limited to only four smart home devices per Google Home device. For more devices use an Alexa home hub or SmartThings hub.
- Complete Smart Home Connectivity: Voice and App control, On/off, dim, CCT, RGB, remote connectivity, group control, Routines and Automations are available to user.
- Speaker Functions work identical to the Single Speaker Setup.



### E Alexa Direct Connection

- Requires the use of an Alexa unit with Home Hub (Echo 4th Gen., Echo plus, Echo Studio, Echo Show 10). For set-up, Ask Alexa: "Alexa, discover my devices".
- Complete Smart Home Connectivity: Voice and App control, On/off, dim, CCT, RGB, remote connectivity, group control, Routines and Automations are available to user.
- Speaker Functions work identical to the Single Speaker Setup.



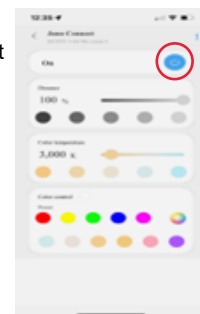
## Juno Smart Speaker Light Group Speaker Set-Up (up to 12 units)

Speaker Grouping allows multiple speaker playback of a music stream from phone or tablet.



- Before creating a speaker group all speakers intended for the group must be on-boarded to a smart home app.
  - If Internet is unavailable, use SmartThings D2D.
  - Speaker grouping and operation follows the same process regardless of which smart home app is used.

- Once all lights are onboarded to a smart home app:
  - Navigate to the smart home app individual light control screen, set each light to white color and turn it on/off **FIVE** times quickly.
  - Light will turn blue then green then back to blue and so on, if done correctly.
  - Select blue color for one master unit (note: only one master allowed per group).
  - Toggle all other fixtures to green (satellites) by cycling on/off in app.
  - Next set all units back to white using app.
  - Turn the light **off from the light switch** then back on. Do it slowly (5-10 sec. wait).
  - Lights will begin to pulse as the group is created. Lights will quickly flash white one by one as they complete the process. (Up to one minute)
  - Group is now created and can be connected through phone's Bluetooth list



On/Off  
Button



# Juno Smart Speaker Light Quick Start Guide

## How to Videos

1

[How to Add the Juno® Speaker Light to Samsung® SmartThings](#)



3

[How to Create a Speaker Group](#)



2

[How to Update Firmware on the Speaker Light](#)



Amazon, Alexa and all related logos are trademarks of Amazon.com, Inc. or its affiliates.



The Works with SmartThings words and logo are trademarks of Samsung Electronics Co. Ltd.



Google, Google Home and Google Nest Audio are trademarks of Google LLC.

