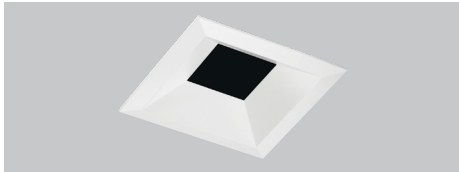


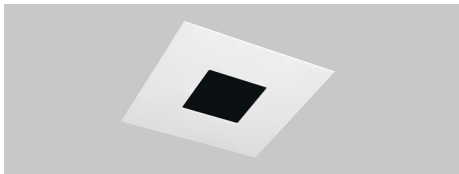
### TRIM STYLES



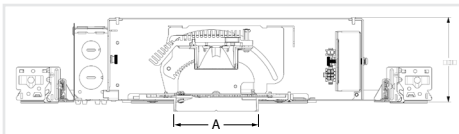
Angle-Cut Reflector



Bevels



Pinholes



A Dimension:  
Self Flanged: 4.5"  
Flangeless: 3.625"

### FEATURES

#### SPOT ON! OPTICS

- Beam Distributions from 5 - 60, Field Interchangeable Optics from 12 - 60 degrees
- Patented self-adjusting optic holder accommodates up to 3 beam control lenses or filters (US Patent 8,950,911)

#### ACU-AIM™ PRECISION AIMING

- Precision geared hot-aiming provides 370° horizontal, 45° vertical aiming via Philips screwdriver
- Optimized center beam optics translates center of the beam through the center of the aperture resulting in low aperture brightness

#### EXCEPTIONAL PERFORMANCE FROM 3-INCH APERTURE

- Up to 2651 lumens, 25,803 CBCP Delivered!
- Exceptionally consistent color with < 2SDCM for Static White & Tunable White; < 1SDCM for WarmDim
- Excellent color rendition with 95+ CRI | 90+ R9 Available
- WarmDim® option mimics halogen dimming (3000K-1800K)
- Tunable White CCT range of 5000K –2700K



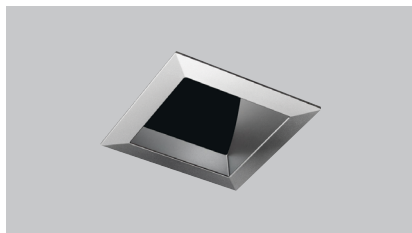
### PERFORMANCE

LUMEN PACKAGE	WATTS IN	DELIVERED LUMENS	EFFICACY (LPW)	MCBCP
<b>Static White*</b>				
06LM	12	549	47	31201
08LM	7	724	103	7050
12LM	11	1063	97	10344
15LM	14	1319	94	12841
20LM	20	1865	93	18153
25LM	26	2316	89	22549
30LM	33	2651	80	25803
<b>WarmDim®</b>				
08LM	14	738	52	10070
12LM	20	1190	59	8490
15LM	26	1473	57	6382
<b>Tunable White</b>				
08LM	12	927	77	5583
12LM	18	1386	77	8345
15LM	20	1551	78	9339
20LM	31	2184	70	13153

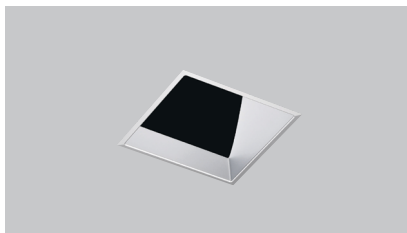
Performance with 3SQA trim at 30K 80CRI (Static White) | 30K 90CRI (WarmDim) | 50K 90CRI (Tunable White)

\*06LM shown at 90CRI

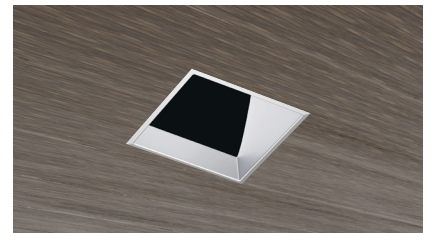
### FLANGE STYLES



Self-Flanged



Flangeless (Gypsum)



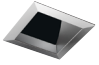
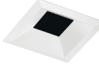
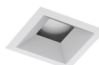
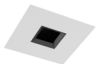

Flangeless (Wood | Stone | Tile)



ORDERING INFORMATION

EXAMPLE: AX3SQ A G4 25LM 30K 95CRI 24D FPC 120 ICAT 3SQABV BS WHSF

Housing	Lumens	CCT	CRI	Beam	Driver	Voltage <sup>4</sup>	Ratings	Options										
<b>AX3SQ A</b> New Construction Adjustable  <b>AX3SQ LPA</b> Low Profile New Construction Adjustable	<b>G4</b>  Static White <b>06LM<sup>10</sup></b> 600 lumens <b>08LM</b> 800 lumens <b>12LM</b> 1200 lumens <b>15LM</b> 1500 lumens <b>20LM</b> 2000 lumens <b>25LM</b> 2500 lumens <b>30LM<sup>1</sup></b> 3000 lumens	27K 2700K 30K 3000K 35K 3500K 40K 4000K	80CRI <sup>11</sup> 90CRI <sup>2</sup> 95CRI <sup>2,11</sup>	<b>05D<sup>10</sup></b> 5° beam <b>12D</b> 12° beam <b>20D</b> 20° beam <b>24D</b> 24° beam <b>30D</b> 30° beam <b>35D</b> 35° beam <b>40D</b> 40° beam <b>45D</b> 45° beam <b>50D</b> 50° beam <b>60D</b> 60° beam <b>60D20D</b> 60° x 20°	<b>GZ1</b> 0-10V   1% min <b>EZ1</b> 0-10V eldoLED   linear 1% min <b>EZB</b> 0-10V eldoLED   log <1% min <b>EDXB</b> eldoLED DMX   square <1% min <b>EDAB</b> eldoLED DALI 6   log <1% min <b>FPC</b> Phase Cut Dimming   1% min <b>ECOD<sup>12</sup></b> Lutron EcoSystem   1% min	<b>120</b> <b>277</b> <b>MVOLT</b> (120-277)	(blank) Non-ICAT <b>CP<sup>5</sup></b> Chicago Plenum <b>ICAT<sup>5</sup></b> IC Rated, Air-tight	<b>NLIGHT<sup>6</sup></b> nLight Dimming pack controls (Static White and WarmDim only)  <b>E6WT20R<sup>7,12</sup></b> Emergency 6W battery pack with remote test switch, T20 compliant										
									<b>WarmDim<sup>9</sup></b> <b>08LM</b> 800 lumens <b>12LM</b> 1200 lumens <b>15LM</b> 1500 lumens	<b>WDIM HALR</b> 3000K - 1800K	90CRI	<b>12D<sup>3</sup></b> 12° beam <b>15D<sup>3</sup></b> 15° beam <b>20D<sup>3</sup></b> 20° beam <b>24D</b> 24° beam <b>35D</b> 35° beam <b>40D</b> 40° beam <b>50D</b> 50° beam <b>60D20D</b> 60° x 20°	<b>GZ1</b> 0-10V   1% min <b>FPC</b> Phase Cut Dimming   1% min					
														<b>Tunable White</b> <b>08LM</b> 800 lumens <b>12LM</b> 1200 lumens <b>15LM</b> 1500 lumens <b>20LM</b> 2000 lumens	<b>TUWH</b> 5000K - 2700K	90CRI	<b>20D</b> 20° beam <b>24D</b> 24° beam <b>35D</b> 35° beam <b>40D</b> 40° beam <b>50D</b> 50° beam <b>60D20D</b> 60° x 20°	<b>GZ1</b> 0-10V   1% min <b>NLT<sup>6</sup></b> nLight nTune interface <b>EDAB</b> eldoLED DALI 6   log <1% min <b>EDABT8</b> eldoLED DALI 8   log <1% min

Adjustable Trim	Reflector Finish	Flange Style	Trim Lens   Environment	Ceiling Installation
<b>Reflector</b> <b>3SQA</b> Angle Cut Reflector (0-45°) 	<b>W</b> White Paint <b>CD</b> Clear Diffuse <b>BD</b> Black Diffuse <b>WTD</b> Wheat Diffuse	<b>Flanged</b> <b>SF</b> Self Flanged (same finish as reflector) <b>WHSF</b> Self Flanged, White Painted Flange (not available with W finish)  <b>Flangeless<sup>8</sup></b> <b>FM</b> Flangeless	(blank) Open   Damp Location <b>WET</b> Clear   Wet Location	<b>Flanged</b> (blank) Ceiling Thickness < 0.875" <b>CTA3SQ/125</b> Ceiling Thickness 0.875" - 1.25" <b>CTA3SQ/163</b> Ceiling Thickness 1.25" - 1.625"  <b>Flangeless (Gypsum)</b> <b>FMA3SQ/087</b> Ceiling Thickness < 0.875" <b>FMA3SQ/125</b> Ceiling Thickness 0.875" - 1.25" <b>FMA3SQ/163</b> Ceiling Thickness 1.25" - 1.625"  <b>Flangeless (Wood   Stone   Tile)<sup>9</sup></b> <b>SFM3SQ/100 (B,W)</b> Ceiling Thickness < 1.00" <b>SFM3SQ/138 (B,W)</b> Ceiling Thickness 1.00" - 1.375" <b>SFM3SQ/163 (B,W)</b> Ceiling Thickness 1.375" - 1.625"
<b>Bevels</b> <b>3SQABV</b> Bevel Adjustable   <b>3SQSHABV</b> Dead Front, Non-Conductive Shower Bevel Adjustable 	<b>Upper Reflector (Shield) Finish</b> <b>BS</b> Black Specular <b>BD</b> Black Diffuse	<b>Trim Finish &amp; Flange Style</b> <b>Flanged</b> <b>WHSF</b> White, Flanged <b>BLSF</b> Black, Flanged  <b>Flangeless<sup>8</sup></b> <b>WHFM</b> White, Flangeless <b>BLFM</b> Black, Flangeless	(blank) Open   Damp Location <b>WET</b> Solite   Wet Location	
<b>Pinholes</b> <b>3SQAPIN</b> 1 1/4" Pinhole Adjustable   <b>3SQAPINLG</b> 1 3/4" Pinhole Adjustable 				

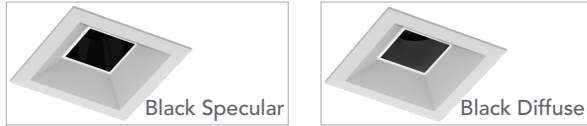


REFLECTOR FINISHES

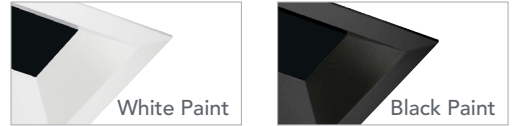


BEVEL & PINHOLE FINISHES

Upper Reflector Finish



Trim Finish



ORDERING NOTES

- 30LM not available with LPA
- 90CRI and 95CRI available on 27K and 30K only. Contact factory for other CCT/CRI combinations.
- For WDIM, 12D only available with 08LM ; 15D only available with 12LM; 20D only available with 15LM
- MVOLT standard on GZ1, EZ1, EZB, ECOD, EDXB, EDAB, EDABT8, NLT (unless NLIGHT). Must be 120 for FPC.
- CP or ICAT not available with LPA at 25LM; not available with A at 30LM; not available with 15LM WDIM or 20LM TUWH
- Must specify 120 or 277 volts for NLIGHT; MVOLT for NLT. NLIGHT only available with GZ1 for 06LM or warmDim. NLIGHT only available with EZ1 or EZB (for static white). NLT and NLIGHT not available with CP.
- E6WT20R not available with WDIM, TUWH, EDXB, CP, ICAT, or NLIGHT.
- Must specify FMA3SQ or SFM3SQ option.
- Specify finish: B = Black, W = White.
- 06LM only available in 05D, and 05D only available in 06LM.
- .80 & 95 CRI not available at 06LM.
- ECOD, E6WT20R not available at 06LM.

ACCESSORIES

Beam Control Lenses & Filters		Replacement Optics		Optional Installation Accessories	
DIFF 200	Diffuse Spread lens	<b>Static White Optics</b>		<b>WarmDim Optics</b>	
SOLITE 200	Solite Uniformity Lens	3AXOPT/12D	12° Beam	3AXWDOPT/12D	12° Beam
PRISM 200	Prismatic Lens	3AXOPT/20D	20° Beam	3AXWDOPT/15D	15° Beam
LSPREAD 200	Linear Spread Lens	3AXOPT/24D	24° Beam	3AXWDOPT/20D	20° Beam
HCLBL 200	Hexcell Louver	3AXOPT/30D	30° Beam	3AXWDOPT/24D	24° Beam
UVF 200	UV Filter Lens	3AXOPT/35D	35° Beam	3AXWDOPT/35D	35° Beam
DCCF 200 HAL4250	Daylight Blue Correction	3AXOPT/40D	40° Beam	3AXWDOPT/40D	40° Beam
DIFF 200 05D	Diffusing Lens for 05D (+10 & +20)	3AXOPT/45D	45° Beam	3AXWDOPT/50D	50° Beam
		3AXOPT/50D	50° Beam	3AXWDOPT/60D20D	60°x20° Beam
		3AXOPT/60D	60° Beam		
		3AXOPT/60D20D	60°x20° Beam	<b>Tunable White Optics</b>	
				3AXTWOPT/20D	20° Beam
				3AXTWOPT/24D	24° Beam
				3AXTWOPT/35D	35° Beam
				3AXTWOPT/40D	40° Beam
				3AXTWOPT/50D	50° Beam
				3AXTWOPT/60D20D	60°x20° Beam
				<b>Bar Hangers</b>	
				HB1	Juno Real Nail® 3 Bar Hangers
				HB26	26" C-Channel Bar Hangers
				HB50	50" C-Channel Bar Hangers
				LB27	27" Linear Bar Hangers
				<i>Note: Fixture supplied with Pro-VI™ Bar Hangers</i>	
				<b>Emergency Inverter</b>	
				IIS 35 HE	Up to 35W Remote Mount Micro Inverter (30LM Excluded)

Spot On! Precision Optics



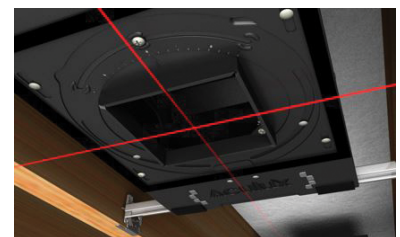
Smooth, striation-free beams with field-interchangeable TIR optics from 12° to 60°

Acu-Aim™ Precision Aiming



Precision geared hot-aiming is effortless. Centerbeam optics results in lower aperture brightness

Tru-Line™ Precision Installation



Pro-VI™ bar hangers, coupled with +/-1/2" aperture translation and +/-45° aperture rotation makes perfect installation achievable

## PRODUCT SPECIFICATIONS

### FIELD INTERCHANGEABLE LED LIGHT ENGINE

- Future proof and easy to maintain-serviceable from below the ceiling

#### Static White:

- <2SDCMBinning
- 2700K | 3000K | 3500K | 4000K CCT
- 80+CRI available for all CCTs, not available for 600LM
- 90+CRI only available 27K & 30K, all CCTs available for 600LM
- 95CRI only available for 27K & 30K & not for 600LM
- 95+ CRI (>90 R9) available for 2700K, 3000K

#### WarmDim:

- Proprietary WarmDim technology mimics halogen, with CCT shifting from 3000K to 1800K when dimmed.
- <1SDCM Binning, 90+CRI

#### Tunable White:

- Tunable CCT range 5000K to 2700K
- <2 SDCM Binning, 90+ CRI

### SPOT-ON! PRECISION OPTICS

- Beam Distributions from 5 - 60, Field Interchangeable Optics from 12 - 60 degrees
- Patented auto-adjusting optic holder (US Patent 8,950,911). Static White Fixtures accommodate up to three (3) beam control lenses and/or filters for AX3SQ A and up to two (2) for AX3SQ LPA. WarmDim and Tunable White fixtures accommodate up to two (2) beam control lenses and/or filters.
- UGR is zero for fixtures aimed at nadir with a cut-off equal to or less than 60°, per CIE 117-1996 Discomfort Glare in Interior Lighting. [UGR FAQs](#)

### ACU-AIM™ PRECISION AIMING

- Precision Geared hot-aiming via Philips screwdriver
- 370° horizontal, 45° vertical aiming
- Optimized center beam optics translates center of the beam through the center of the aperture for maximum efficiency and low aperture brightness
- Numeric indicator marks allow contractor to pre-aim fixtures

### HIGH QUALITY TRIMS

- Available with die cast bevels, pinholes, and angle cut reflectors
- Non-corrosive, polycarbonate bevel option for shower applications
- Available in Self Flanged and Flangeless
- Must specify FMA3SQ for gypsum flangeless installation
- Must specify SMF3SQ for wood, stone, tile flangeless installation

### FIELD REPLACEABLE DRIVER

- Accommodates 120-277V input and multiple control protocols
- Dims without perceived flicker to <1% depending on driver specified
- Field replaceable without tools from below the ceiling
- >0.9 Power Factor

### BUY AMERICAN ACT

- This product is assembled in the USA and meets the Buy America(n) government procurement requirements under FAR, DFARS and DOT regulations.
- Please refer to [www.acuitybrands.com/resources/buy-american](http://www.acuitybrands.com/resources/buy-american) for additional information.

### WARRANTY & RATED LIFE

- LED is rated for >50,000 hours at 70% lumen maintenance
- 5-year limited warranty. This is the only warranty provided and no other statements in this specification sheet create any warranty of any kind. All other express and implied warranties are disclaimed. Complete warranty terms located at: <https://www.acuitybrands.com/support/warranty/terms-and-conditions>

### EMERGENCY BATTERY

- Provides a minimum of 600 lumens (3SQA, 3000K, 80CRI) for minimum duration of 90 minutes.
- Accessible below ceiling for simple service; Self-Testing
- Supplied with Class-2 plenum rated remote test switch
- CEC T20 Compliant

### NEW CONSTRUCTION MOUNTING

- Features patented (US Patent 8,038,113) Pro-VI™ bar hanger system compatible with wood stud and T-bar
- Includes vertically adjustable mounting brackets (butterfly brackets) \* Excluding 25LM ICAT housings
- Centerline indicators on plaster frame and patented (US Patent 8,277,090) Tru-Line™ Platform featuring +/- 1/2" translation and +/- 45° aperture rotation aids fixture alignment after installation, prior to finishing the ceiling.

### JUNCTION BOX

- ICAT Rated for (4) No. 12 AWG 90°C through branch circuit conductors.
- Includes (6) 1/2", (1) 3/4", (4) Non-metallic sheathed cable knock-outs.
- Push-in electrical connectors for field connections.

### CODES & LABELS

- UL & cUL listed for through branch wiring, damp location
- Meets energy code Air Leakage requirements per ASTM E283
- Visit [www.energystar.gov](http://www.energystar.gov) for specific configurations listed. Not all configurations are Energy Star listed
- Can be used to comply with Title 24, Part 6 with select trims and housings. Reference T24 JA-8 database for list of compliant housings and trims.
- Static White ICAT housings\* are rated for direct contact with insulation, including open and closed cell spray foam with a maximum R-value of 7.2R/in. This allows use in ceiling cavities insulated up to R60. WDIM and TUWH ICAT housings\* are rated for direct contact with insulation, including open cell spray foam with a maximum R-value of 3.8R/in. They are not suitable for use with closed cell spray foam. \*Note: Options: "25LM ICAT", "15LM TUWH ICAT", "ECOD", "EDXB", & "NLIGHT" are excluded and not suitable for use with spray foam insulation.
- 3SQSHABV option can be used to comply with dead front and/or non-conductive lighting electrical code requirements. Flanged (SF) version is certified to IP65
- Union made

### CEILING THICKNESS

- Accommodates 1/2" to 1.625" ceiling thickness

### A+ CAPABLE LUMINAIRE

This item is an A+ capable luminaire, which has been designed and tested to provide consistent color appearance and out-of-the-box control compatibility with simple commissioning, when used with Acuity Brands controls products.

- All configurations of this luminaire are calibrated and tested to meet the Acuity Brand's specification for chromatic consistency - including color rendering, color fidelity and color temperature tolerance around standard CIE chromaticity coordinates.

To learn more about Acuity A+ standards, specifications and testing, visit [www.acuitybrands.com/aplus](http://www.acuitybrands.com/aplus).

### NOTE:

Actual performance may differ as a result of end-user environment and application.

All values are design or typical values, measured under laboratory conditions at 25 °C.

The product images shown are for illustration purposes only and may not be an exact representation of the product.

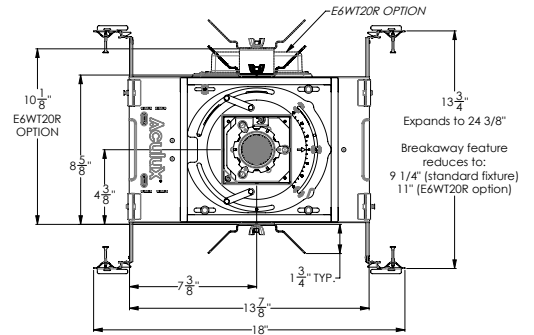
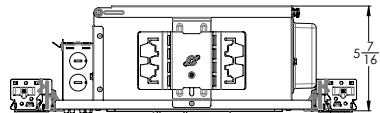
DIMENSIONS

**Ceiling Cutout:** 4-1/8" x 4-1/8" (Refer to installation instructions for flangeless ceiling cutout)

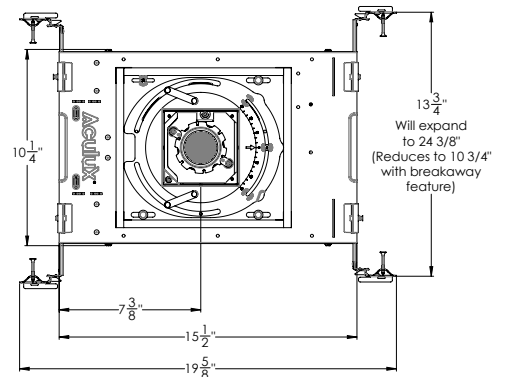
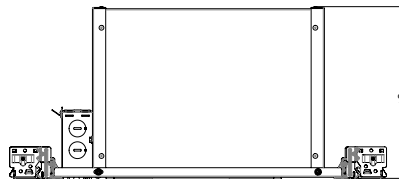
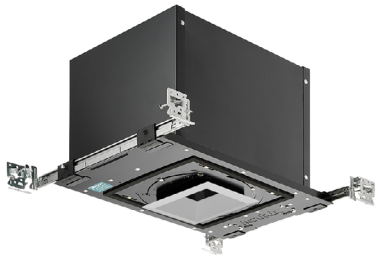
**New Construction Adjustable (AX3SQ A)**

ICAT/Non-ICAT: 06LM | 08LM | 12LM | 15LM | 20LM

Non-ICAT: 25LM | 30LM



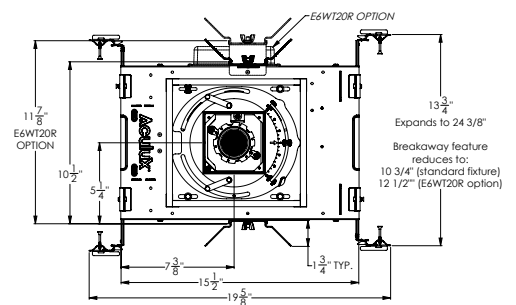
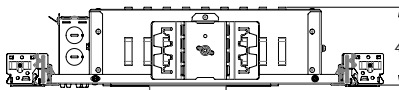
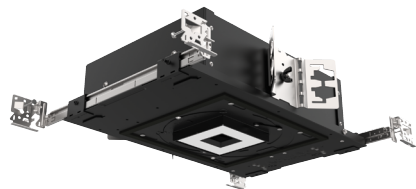
ICAT: 25LM



**Low Profile New Construction Adjustable (AX3SQ LPA)**

ICAT/Non-ICAT: 06LM | 08LM | 12LM | 15LM | 20LM

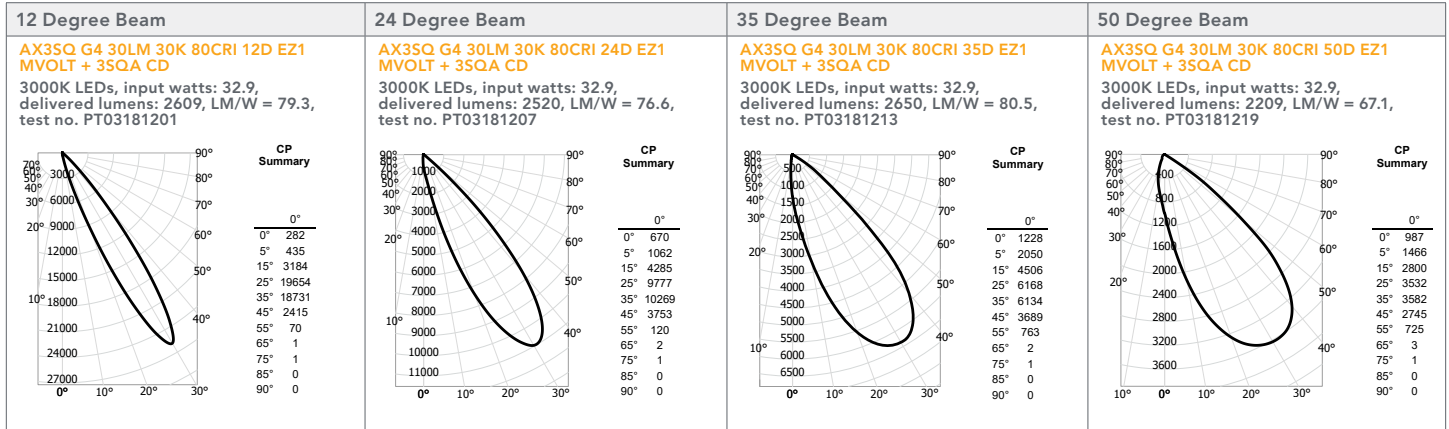
Non-ICAT: 25LM





PHOTOMETRICS (@ 30° TILT) - 3SQA

Tested in accordance to IESNA LM79



Measured 30LM   30K   80 CRI		FOR HORIZONTAL AIMING ANGLES							FOR VERTICAL AIMING ANGLES								
		Horizontal Aiming Angles			Vertical Aiming Angles												
Beam Spread	CBCP	0°				30°			30°				45°				
		MH	FC	L	W	FC	L	W	D	FC	X	L	W	FC	X	L	W
12D	25803	6	717	1.7	1.7	466	2.2	1.9	3	358	5.2	3.5	1.7	1014	3.0	1.7	1.2
		8	403	2.2	2.2	262	3.0	2.6	4	202	6.9	4.7	2.2	570	4.0	2.3	1.6
		10	258	2.8	2.8	168	3.7	3.2	5	129	8.7	5.9	2.8	365	5.0	2.8	2.0
		12	179	3.3	3.3	116	4.5	3.8	6	90	10.4	7.1	3.3	253	6.0	3.4	2.4
		14	132	3.9	3.9	86	5.2	4.5	7	66	12.1	8.2	3.9	186	7.0	4.0	2.7
24D	10954	4	685	1.8	1.8	445	2.5	2.1	2	342	3.5	4.4	1.8	968	2.0	1.9	1.3
		6	304	2.8	2.8	198	3.7	3.2	3	152	5.2	6.6	2.8	430	3.0	2.9	2.0
		8	171	3.7	3.7	111	5.0	4.2	4	86	6.9	8.7	3.7	242	4.0	3.9	2.6
		10	110	4.6	4.6	71	6.2	5.3	5	55	8.7	10.9	4.6	155	5.0	4.9	3.3
		12	76	5.5	5.5	49	7.5	6.4	6	38	10.4	13.1	5.5	108	6.0	5.8	3.9
35D	6364	4	398	2.6	2.6	258	3.6	3.0	2	199	3.5	7.7	2.6	563	2.0	2.9	1.8
		6	177	3.9	3.9	115	5.4	4.5	3	88	5.2	11.5	3.9	250	3.0	4.4	2.8
		8	99	5.2	5.2	65	7.2	6.0	4	50	6.9	15.3	5.2	141	4.0	5.8	3.7
		10	64	6.5	6.5	41	9.0	7.5	5	32	8.7	19.1	6.5	90	5.0	7.3	4.6
		12	44	7.8	7.8	29	10.8	9.0	6	22	10.4	23.0	7.8	63	6.0	8.8	5.5
50D	3628	4	227	3.1	3.1	147	4.3	3.5	2	113	3.5	10.9	3.1	321	2.0	3.6	2.2
		6	101	4.6	4.6	65	6.4	5.3	3	50	5.2	16.4	4.6	143	3.0	5.4	3.2
		8	57	6.1	6.1	37	8.6	7.1	4	28	6.9	21.9	6.1	80	4.0	7.2	4.3
		10	36	7.7	7.7	24	10.7	8.8	5	18	8.7	27.3	7.7	51	5.0	9.0	5.4
		12	25	9.2	9.2	16	12.9	10.6	6	13	10.4	32.8	9.2	36	6.0	10.8	6.5

In vertical aiming applications, aim point (X) is determined by dividing distance from the wall (D) by the tangent of the desired aim angle (A) (0.5774 for 30°, 1.0 for 45°).  
CBCP • Centerbeam candlepower FC • Footcandles at beam center (aim point)

LUMEN | CBCP MULTIPLIERS

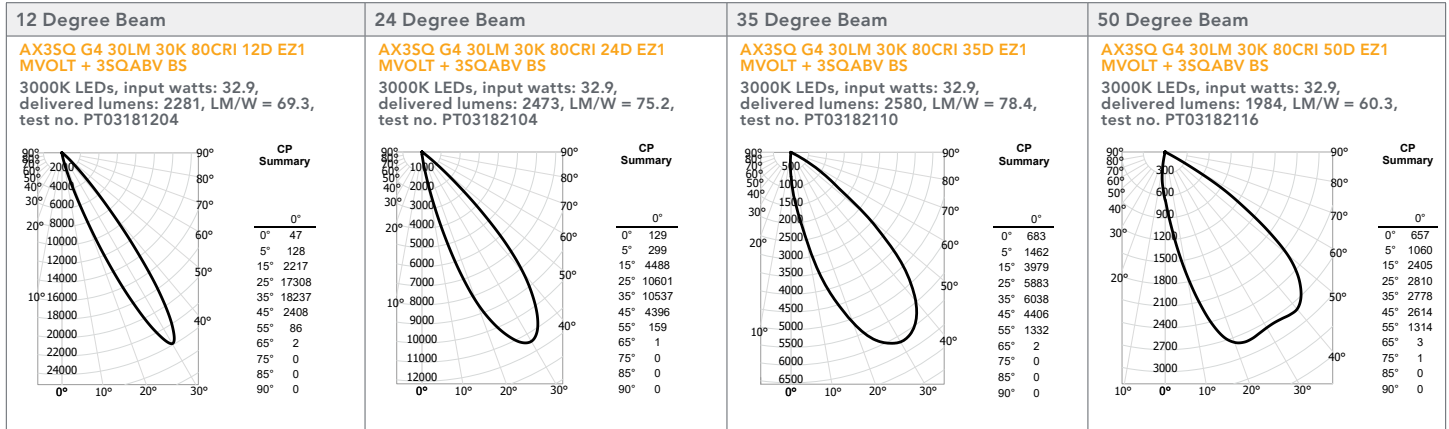
CCT	80+ CRI	90+ CRI	95+ CRI
2700K	1.00	0.86	0.65
3000K	1.00	0.88	0.69
3500K	1.05	-	-
4000K	1.07	-	-





PHOTOMETRICS (@ 30° TILT) - 3SQABV

Tested in accordance to IESNA LM79



Measured 30LM   30K   80 CRI		FOR HORIZONTAL AIMING ANGLES							FOR VERTICAL AIMING ANGLES								
		Horizontal Aiming Angles							Vertical Aiming Angles								
Beam Spread	CBCP	0°				30°			30°				45°				
		MH	FC	L	W	FC	L	W	D	FC	X	L	W	FC	X	L	W
12D	23854	6	663	1.6	1.6	430	2.2	1.9	3	331	5.2	3.5	1.6	937	3.0	1.7	1.2
24D	11446	4	715	1.9	1.9	465	2.6	2.2	2	358	3.5	4.6	1.9	1012	2.0	2.0	1.4
		6	318	2.9	2.9	207	3.9	3.3	3	159	5.2	6.9	2.9	450	3.0	3.0	2.0
		8	179	3.8	3.8	116	5.2	4.4	4	89	6.9	9.2	3.8	253	4.0	4.1	2.7
		10	114	4.8	4.8	74	6.5	5.5	5	57	8.7	11.5	4.8	162	5.0	5.1	3.4
35D	6174	4	386	2.7	2.7	251	3.7	3.1	2	193	3.5	8.2	2.7	546	2.0	3.0	1.9
		6	172	4.0	4.0	111	5.6	4.7	3	86	5.2	12.2	4.0	243	3.0	4.6	2.9
		8	96	5.4	5.4	63	7.5	6.2	4	48	6.9	16.3	5.4	136	4.0	6.1	3.8
		10	62	6.7	6.7	40	9.3	7.8	5	31	8.7	20.4	6.7	87	5.0	7.6	4.8
50D	2810	4	176	3.5	3.5	114	4.9	4.0	2	88	3.5	15.7	3.5	248	2.0	4.2	2.4
		6	78	5.2	5.2	51	7.4	6.0	3	39	5.2	23.5	5.2	110	3.0	6.4	3.7
		8	44	6.9	6.9	29	9.8	8.0	4	22	6.9	31.3	6.9	62	4.0	8.5	4.9
		10	28	8.6	8.6	18	12.3	10.0	5	14	8.7	39.2	8.6	40	5.0	10.6	6.1
12	20	10.4	10.4	13	14.7	12.0	6	10	10.4	47.0	10.4	28	6.0	12.7	7.3		

In vertical aiming applications, aim point (X) is determined by dividing distance from the wall (D) by the tangent of the desired aim angle (A) (0.5774 for 30°, 1.0 for 45°).  
 CBCP • Centerbeam candlepower FC • Footcandles at beam center (aim point)

LUMEN | CBCP MULTIPLIERS

CCT	80+ CRI	90+ CRI	95+ CRI
2700K	1.00	0.86	0.65
3000K	1.00	0.88	0.69
3500K	1.05	-	-
4000K	1.07	-	-



PHOTOMETRICS (@ 30° TILT) - 3SQAPIN

Tested in accordance to IESNA LM79

12 Degree Beam	24 Degree Beam	35 Degree Beam	50 Degree Beam																																																																																								
<p><b>AX3SQ G4 30LM 30K 80CRI 12D EZ1 MVOLT + 3SQAPIN BS</b></p> <p>3000K LEDs, input watts: 32.9, delivered lumens: 1528, LM/W = 46.4, test no. PT03181203</p> <p><b>CP Summary</b></p> <table border="1"> <tr><th>0°</th><td>18</td></tr> <tr><th>5°</th><td>92</td></tr> <tr><th>15°</th><td>1880</td></tr> <tr><th>25°</th><td>15417</td></tr> <tr><th>35°</th><td>12727</td></tr> <tr><th>45°</th><td>322</td></tr> <tr><th>55°</th><td>7</td></tr> <tr><th>65°</th><td>0</td></tr> <tr><th>75°</th><td>0</td></tr> <tr><th>85°</th><td>0</td></tr> <tr><th>90°</th><td>0</td></tr> </table>	0°	18	5°	92	15°	1880	25°	15417	35°	12727	45°	322	55°	7	65°	0	75°	0	85°	0	90°	0	<p><b>AX3SQ G4 30LM 30K 80CRI 24D EZ1 MVOLT + 3SQAPIN BS</b></p> <p>3000K LEDs, input watts: 32.9, delivered lumens: 1792, LM/W = 54.5, test no. PT03182103</p> <p><b>CP Summary</b></p> <table border="1"> <tr><th>0°</th><td>74</td></tr> <tr><th>5°</th><td>132</td></tr> <tr><th>15°</th><td>3967</td></tr> <tr><th>25°</th><td>10582</td></tr> <tr><th>35°</th><td>8387</td></tr> <tr><th>45°</th><td>2352</td></tr> <tr><th>55°</th><td>7</td></tr> <tr><th>65°</th><td>0</td></tr> <tr><th>75°</th><td>0</td></tr> <tr><th>85°</th><td>0</td></tr> <tr><th>90°</th><td>0</td></tr> </table>	0°	74	5°	132	15°	3967	25°	10582	35°	8387	45°	2352	55°	7	65°	0	75°	0	85°	0	90°	0	<p><b>AX3SQ G4 30LM 30K 80CRI 35D EZ1 MVOLT + 3SQAPIN BS</b></p> <p>3000K LEDs, input watts: 32.9, delivered lumens: 1898, LM/W = 57.7, test no. PT03182109</p> <p><b>CP Summary</b></p> <table border="1"> <tr><th>0°</th><td>607</td></tr> <tr><th>5°</th><td>1341</td></tr> <tr><th>15°</th><td>3409</td></tr> <tr><th>25°</th><td>5880</td></tr> <tr><th>35°</th><td>5437</td></tr> <tr><th>45°</th><td>2478</td></tr> <tr><th>55°</th><td>150</td></tr> <tr><th>65°</th><td>1</td></tr> <tr><th>75°</th><td>0</td></tr> <tr><th>85°</th><td>0</td></tr> <tr><th>90°</th><td>0</td></tr> </table>	0°	607	5°	1341	15°	3409	25°	5880	35°	5437	45°	2478	55°	150	65°	1	75°	0	85°	0	90°	0	<p><b>AX3SQ G4 30LM 30K 80CRI 50D EZ1 MVOLT + 3SQAPIN BS</b></p> <p>3000K LEDs, input watts: 32.9, delivered lumens: 1087, LM/W = 33.0, test no. PT03182115</p> <p><b>CP Summary</b></p> <table border="1"> <tr><th>0°</th><td>103</td></tr> <tr><th>5°</th><td>651</td></tr> <tr><th>15°</th><td>2079</td></tr> <tr><th>25°</th><td>2830</td></tr> <tr><th>35°</th><td>2707</td></tr> <tr><th>45°</th><td>1554</td></tr> <tr><th>55°</th><td>7</td></tr> <tr><th>65°</th><td>0</td></tr> <tr><th>75°</th><td>0</td></tr> <tr><th>85°</th><td>0</td></tr> <tr><th>90°</th><td>0</td></tr> </table>	0°	103	5°	651	15°	2079	25°	2830	35°	2707	45°	1554	55°	7	65°	0	75°	0	85°	0	90°	0
0°	18																																																																																										
5°	92																																																																																										
15°	1880																																																																																										
25°	15417																																																																																										
35°	12727																																																																																										
45°	322																																																																																										
55°	7																																																																																										
65°	0																																																																																										
75°	0																																																																																										
85°	0																																																																																										
90°	0																																																																																										
0°	74																																																																																										
5°	132																																																																																										
15°	3967																																																																																										
25°	10582																																																																																										
35°	8387																																																																																										
45°	2352																																																																																										
55°	7																																																																																										
65°	0																																																																																										
75°	0																																																																																										
85°	0																																																																																										
90°	0																																																																																										
0°	607																																																																																										
5°	1341																																																																																										
15°	3409																																																																																										
25°	5880																																																																																										
35°	5437																																																																																										
45°	2478																																																																																										
55°	150																																																																																										
65°	1																																																																																										
75°	0																																																																																										
85°	0																																																																																										
90°	0																																																																																										
0°	103																																																																																										
5°	651																																																																																										
15°	2079																																																																																										
25°	2830																																																																																										
35°	2707																																																																																										
45°	1554																																																																																										
55°	7																																																																																										
65°	0																																																																																										
75°	0																																																																																										
85°	0																																																																																										
90°	0																																																																																										

Measured 30LM   30K   80 CRI	Beam Spread	CBCP	Horizontal Aiming Angles						Vertical Aiming Angles									
			0°				30°		30°				45°					
			MH	FC	L	W	FC	L	W	D	FC	X	L	W	FC	X	L	W
	12D	23854	6	663	1.6	1.6	430	2.2	1.9	3	331	5.2	3.5	1.6	937	3	1.7	1.2
			8	373	2.2	2.2	242	2.9	2.5	4	186	6.9	4.6	2.2	527	4	2.2	1.5
			10	239	2.7	2.7	155	3.7	3.2	5	119	8.7	5.8	2.7	337	5	2.8	1.9
			12	166	3.3	3.3	108	4.4	3.8	6	83	10.4	7	3.3	234	6	3.4	2.3
			14	122	3.8	3.8	79	5.1	4.4	7	61	12.1	8.1	3.8	172	7	3.9	2.7
	24D	11446	4	715	1.9	1.9	465	2.6	2.2	2	358	3.5	4.6	1.9	1012	2	2	1.4
			6	318	2.9	2.9	207	3.9	3.3	3	159	5.2	6.9	2.9	450	3	3	2
			8	179	3.8	3.8	116	5.2	4.4	4	89	6.9	9.2	3.8	253	4	4.1	2.7
			10	114	4.8	4.8	74	6.5	5.5	5	57	8.7	11.5	4.8	162	5	5.1	3.4
			12	79	5.7	5.7	52	7.8	6.6	6	40	10.4	13.9	5.7	112	6	6.1	4.1
	35D	6174	4	386	2.7	2.7	251	3.7	3.1	2	193	3.5	8.2	2.7	546	2	3	1.9
			6	172	4	4	111	5.6	4.7	3	86	5.2	12.2	4	243	3	4.6	2.9
			8	96	5.4	5.4	63	7.5	6.2	4	48	6.9	16.3	5.4	136	4	6.1	3.8
			10	62	6.7	6.7	40	9.3	7.8	5	31	8.7	20.4	6.7	87	5	7.6	4.8
			12	43	8.1	8.1	28	11.2	9.3	6	21	10.4	24.5	8.1	61	6	9.1	5.7
	50D	2810	4	176	3.5	3.5	114	4.9	4	2	88	3.5	15.7	3.5	248	2	4.2	2.4
			6	78	5.2	5.2	51	7.4	6	3	39	5.2	23.5	5.2	110	3	6.4	3.7
			8	44	6.9	6.9	29	9.8	8	4	22	6.9	31.3	6.9	62	4	8.5	4.9
			10	28	8.6	8.6	18	12.3	10	5	14	8.7	39.2	8.6	40	5	10.6	6.1
			12	20	10.4	10.4	13	14.7	12	6	10	10.4	47	10.4	28	6	12.7	7.3

In vertical aiming applications, aim point (X) is determined by dividing distance from the wall (D) by the tangent of the desired aim angle (A) (0.5774 for 30°, 1.0 for 45°).  
 CBCP • Centerbeam candlepower FC • Footcandles at beam center (aim point)





**DIMMER COMPATIBILITY**

**Phase Dimming (FPC) - Incandescent, Magnetic Low Voltage and Electronic Low Voltage Dimming**

- Dimming range of 100% down to as low as 1% a minimum load of one fixture
- Dimming range and maximum rated load vary depending on dimmer type and model. See maximum load calculations below to identify max number of luminaires per dimmer.

**Incandescent (INC) and Magnetic Low Voltage (MLV)**

Example: Fixture Rating = 13W; Dimmer Rating = 600W  
 Equivalent Incandescent Load (EIL) = 50%  
 (600/13W) X 0.5 = 23 Fixtures per Dimmer

**Electronic Low Voltage (ELV)**

Example: Fixture Rating = 13W; Dimmer Rating = 600W  
 Equivalent Incandescent Load (EIL) = 75%  
 (600/13W) X 0.75 = 34 Fixtures per Dimmer

**INCANDESCENT, MLV, ELV WALL DIMMERS**

**Static White**

Manf.	Product Family	Series	Type	Min Light(%)
Lutron	Glyder	GLV*	MLV	2
Leviton	SureSlide	6633*	INC	2
Lutron	Diva	DVLV	MLV	6
Lutron	Diva	DV*	INC	2
Lutron	Skylark	SLV*	MLV	3
Lutron	RadioRA 2	RRD-6D*	INC	2
Lutron	RadioRA 2	RRD-10ND*	INC	2
Leviton	SureSlide	6613	MLV	5
Leviton	IllumaTech	IPL06-10Z*	INC	3
Lutron	Diva	DVCL	INC	3
Insteon	Keypad Dimmer	2334-232	INC	2
Insteon	Dimmer Switch	2477D*	INC	2
Control4	Forward Phase Dimmer	C4-FPD 120	INC	2
Lutron	Nova	NTELV	ELV	6
Lutron	Diva	DVELV*	ELV	2
Lutron	Lutron Maestro	MAELV*	ELV	5
Leviton	Vizia	VPE06-1LX	ELV	2
Leviton	Illumatech	IPE04*	ELV	5
Lutron	Lutron RadioRA2	RRD-6NA	PHA	2
Control4	Adaptive Phase Dimmer	C4-APD 120	PHA	2
Lutron	RadioRA2	RRD-6NA*	PHA	2
Control4	Adaptive Phase Dimmer	C4-APD 120	PHA	2

**INTEGRATED CONTROL SYSTEMS**

**Static White**

Manf.	Product Family	Series	Type	Min Light(%)
Lutron	LP	LP-RPM-4U	INC	5
Lutron	LP	LP-RPM-4A*	PHA	2
Lutron	GrafikEye QS	QSGRJ-3P	PHA	2
Lutron	GrafikEye QS	PHPM-PA-120	PHA	2
Lutron	HomeWorks QS	PHPM-PA-120	PHA	2
Lutron	HomeWorks QS	HW-RPM-4A*	PHA	2
Acuity	nLight nSP5PCD ELV	nSP5PCD*	ELV	4
Insteon	Micro Module Dimmer	2442-222*	INC	2
Control4	8 Ch Dimmer	C4-DIN-8DIM-E	PHA	2

\*: Aculux recommended dimmers

**WarmDim® **

Manf.	Product Family	Series	Type	Min Light(%)
Sensor Switch	WPD	WPD*	INC	1
Leviton	Illmatech	IPM06-1LZ	MLV	3
Leviton	Illmatech	IPI06-1LZ	INC	2
Lutron	Diva	DVCL	INC	1
Leviton	SureSlide	6633*	INC	1
Leviton	SureSlide	6613*	MLV	1
Leviton	SureSlide	IPL06	INC	1
Control4	Forward phase dimmer	C4-FPD 120 FWD*	INC	1
Lutron	Diva	DVELV*	ELV	1
Lutron	Maestro	MAELV*	ELV	1
Lutron	Vive	MRF25-6ELV*	ELV	1
Lutron	Caseta	PD-5NE*	ELV	1
Leviton	Illumatech	IPE04	ELV	4
Lutron	Maestro	RRD-PRO REV	PHA	1
Control4	Phase Adaptive Dimmer	C4-APD 120*	PHA	1
Lutron	Maestro	RRD-PRO FWD*	PHA	1

**WarmDim® **

Manf.	Product Family	Series	Type	Min Light(%)
Acuity	nLight nSP5PCD ELV	nSP5PCD ELV*	ELV	1
Acuity	nLight nSP5PCD ELV	PCDM*	ELV	1
Acuity	Fresco LMPM	LMPM 2D 2L*	PHA	1
Lutron	LP	LP-RPM-4A *	PHA	1
Lutron	LP	LP-RPM-4U*	INC	1
Lutron	GrafikEye QS	Lutron PHPM-PA-120*	PHA	1
Lutron	GrafikEye QS	Lutron Grafik Eye QSGRJ-3P*	MLV	1
Lutron	HomeWorks QS	PHPM-PA-120*	PHA	1
Lutron	HomeWorks QS	HW-RPM-4A*	PHA	1
Legrand	Wattstopper	LMRC-221-U*	PHA	1
Control4	8 Ch Dimmer	C4-DIN-8DIM-E*	PHA	1
Crestron	Phase Adaptive Dimmer	6501748*	PHA	1



Static White, WarmDim® & Tunable White

0-10V Dimming (GZ1, EZ1, EZB drivers)

WALL DIMMERS

Manf.	Product Family	Series	Type	-EZ1/-GZ1 Min. Light (%)	-EZB Min. Light (%)
Lutron	Diva	DVTV	0-10V	1	<1
Lutron	Nova	NFTV	0-10V	1	<1
Lutron	Nova T	NTFTV	0-10V	1	<1

INTEGRATED CONTROL SYSTEMS

Manf.	Product Family	Series	Type	-EZ1/-GZ1 Min. Light (%)	-EZB Min. Light (%)
Lutron	GrafikEye QS	GRX-TVI*	0-10V	1	<1
Lutron	HomeWorks QS	GRX-TVI*	0-10V	1	<1
Lutron	HomeWorks QS	GRX-TVM2*	0-10V	1	<1
Lutron	LCP128	GRX-TVI*	0-10V	1	<1
Lutron	LCP128	GRX-TVM2*	0-10V	1	<1
Lutron	LP	GRX-TVM2*	0-10V	1	<1
Lutron	RadioRA2	LMJ-5T-DV-B	0-10V	1**	<1
Crestron	GreenLight	DIN-4DIMFLV4	0-10V	1	<1
Lutron	Energi Tripak	RMJ-5T-DV-B	0-10V	1	<1
Wattstopper	DLM	LMRC-211	0-10V	1	<1
Insteon	Ballast Dimmer	2475DA2	0-10V	1	<1

ELECTRICAL SPECIFICATIONS

Static White

LUMEN PACKAGE	06LM		08LM		12LM		15LM		20LM		25LM		30LM	
Voltage	120	277	120	277	120	277	120	277	120	277	120	277	120	277
Input Watts	12.0	13.0	7.0	7.6	11.0	12.0	13.8	14.6	19.7	20.2	25.8	26.3	32.9	33.3
Input Current	0.11	0.06	0.03	0.06	0.09	0.05	0.12	0.06	0.17	0.08	0.22	0.10	0.28	0.13
Frequency	50/60 Hz		50/60 Hz		50/60 Hz		50/60 Hz		50/60 Hz		50/60 Hz		50/60 Hz	
Power Factor	0.9 MIN.		0.9 MIN.		0.9 MIN.		0.9 MIN.		0.9 MIN.		0.9 MIN.		0.9 MIN.	

WarmDim

LUMEN PACKAGE	08LM		12LM		15LM	
Voltage	120	277	120	277	120	277
Input Watts	14.1	14.5	20.0	20.3	25.8	25.9
Input Current	0.12	0.05	0.17	0.08	0.22	0.10
Frequency	50/60 Hz		50/60 Hz		50/60 Hz	
Power Factor	0.9 MIN.		0.9 MIN.		0.9 MIN.	

Tunable White

LUMEN PACKAGE	08LM		12LM		15LM		20LM	
Voltage	120	277	120	277	120	277	120	277
Input Watts	12.1	12.8	18.4	18.9	21.1	21.6	31.0	31.0
Input Current	0.10	0.05	0.15	0.07	0.18	0.08	0.26	0.11
Frequency	50/60 Hz		50/60 Hz		50/60 Hz		50/60 Hz	
Power Factor	0.9 MIN.		0.9 MIN.		0.9 MIN.		0.9 MIN.	

\*: Aculux recommended dimmers

\*\* : Not tested with -GZ1

+: Requires a separate relay module to turn luminaire on/off