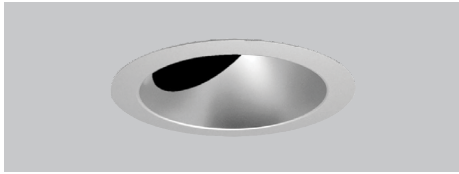
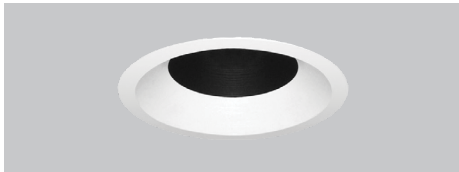


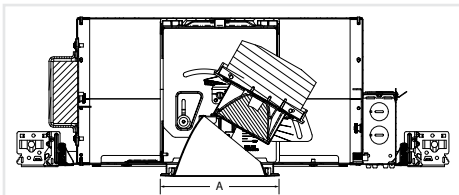
TRIM STYLES



Angle-Cut Reflector



Bevel



A Dimension:  
Self Flanged: 5.7"  
Flangeless: 4.9"

FEATURES

SPOT ON! OPTICS

- Field Interchangeable TIR Optics in 9 distributions
- Accommodates up to 2 beam control lenses or filters

ACU-AIM™ PRECISION AIMING

- Precision geared hot-aiming provides 370° horizontal, 45° vertical aiming
- Optimized center beam optics translates center of the beam through the center of the aperture resulting in low aperture brightness

EXCEPTIONAL PERFORMANCE FROM 4-INCH APERTURE

- Up to 3115 lumens, 27,000 CBCP Delivered!
- Exceptionally consistent color with < 2SDCM for Static White & Tunable White; <1SDCM for WarmDim
- Excellent color rendition with 95+ CRI | 90+ R9 Available
- WarmDim® option mimics halogen dimming (3000K-1800K)
- Tunable White CCT range of 5000K –2700K



PERFORMANCE

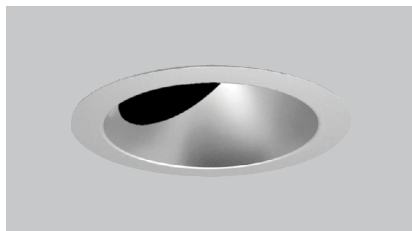
LUMEN PACKAGE	WATTS IN	DELIVERED LUMENS	EFFICACY (LPW)	MCBCP
<b>Static White*</b>				
12LM	9	1215	135	10407
17LM	13	1557	119	13342
22LM	19	2118	111	18145
27LM	25	2616	104	22415
32LM	33	3115	94	26685
<b>WarmDim®</b>				
08LM	16	736	46	14836
12LM	26	1174	45	14114
15LM	29	1433	49	11340
17LM	33	1589	48	12572
<b>Tunable White</b>				
12LM	19	1305	67	12640
17LM	28	1912	68	18519
22LM	38	2438	64	23616

\*Performance with 4AC trim at 30K | 80CRI (Static White), 30K | 90CRI (WarmDim) & 50K | 90CRI (Tunable White)

Actual performance may differ as a result of end-user environment and application.

All values are design or typical values, measured under laboratory conditions at 25°C

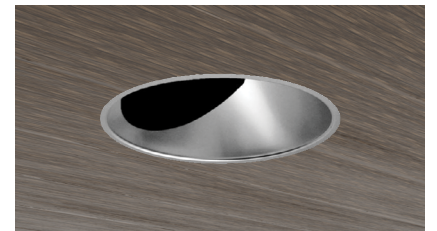
FLANGE STYLES



Self-Flanged



Flangeless (Gypsum)






Flangeless (Wood | Stone | Tile)



ORDERING INFORMATION

EXAMPLE: AX4 A 27LM 30K 95CRI 24D FPC 120 ICAT 4ABV BD WHSF

Housing Style	Lumens	CCT	CRI	Beam	Driver	Voltage <sup>4</sup>	Ratings	Options				
AX4 A New Construction Adjustable	<b>Static White</b>		80CRI 90CRI 95CRI	12D 12° beam 20D 20° beam 24D 24° beam 30D 30° beam 35D 35° beam 40D 40° beam 45D 45° beam 50D 50° beam 50D20D 50° x 20°	GZ1 0-10V   1% min EZ1 0-10V eldoLED   linear 1% min EZB 0-10V eldoLED   log <1% min EDXB eldoLED DMX   square <1% min EDAB eldoLED DALI 6   log <1% min FPC Phase Cut Dimming   1% min ECOD Lutron EcoSystem   1% min	120 277 MVOLT (120-277)	(blank) Non-ICAT CP <sup>5</sup> Chicago Plenum ICAT <sup>5</sup> IC Rated, Air-tight	NLIGHT <sup>6</sup> nLight Dimming pack controls (Static White and WarmDim only) E6WT20R <sup>7</sup> Emergency 6W battery pack with remote test switch, T20 compliant				
	12LM 1200 lumens	27K 2700K										
	17LM 1700 lumens	30K 3000K										
	22LM 2200 lumens	35K <sup>2</sup> 3500K										
	27LM 2700 lumens	40K <sup>2</sup> 4000K										
	32LM <sup>1</sup> 3200 lumens											
	<b>WarmDim<sup>8</sup></b>								WDIM HALR 3000K - 1800K	90CRI	10D <sup>3</sup> 10° beam 15D <sup>3</sup> 15° beam 20D 20° beam 24D 24° beam 35D 35° beam 45D 45° beam 55D 55° beam 50D20D 50° x 20°	GZ1 0-10V   1% min FPC Phase Cut Dimming   1% min
	08LM 800 lumens											
	12LM 1200 lumens											
	15LM 1500 lumens											
	17LM 1700 lumens											
<b>Tunable White</b>		TUWH 5000K - 2700K	90CRI	15D 15° beam 20D 20° beam 24D 24° beam 35D 35° beam 45D 45° beam 55D 55° beam 50D20D 50° x 20°	GZ1 0-10V   1% min EZ1 eldoLED 0-10V   linear 1% min EZB eldoLED 0-10V   log <1% min NLT <sup>6</sup> nLight nTune interface EDAB eldoLED DALI 6   log <1% min EDABT8 eldoLED DALI 8   log <1% min							
12LM 1200 lumens												
17LM 1700 lumens												
22LM 2200 lumens												

Trim	Reflector Finish	Flange Style	Trim Lens   Environment
<b>Adjustable Reflector</b> 4AC Angle Cut Reflector (0-45°) 	W White Paint CD Clear Diffuse CS Clear Specular BS Black Specular WTD Wheat Diffuse	<b>Flanged</b> SF Self Flanged WHSF Self Flanged, White Painted Flange (not available with W finish) <b>Flangeless<sup>8</sup></b> FM Flangeless	(blank) Open   Damp Location WET <sup>9</sup> Solite   Wet Location
4AC20 Shallow Cut Reflector (0-20°) 			
<b>Bevel</b> 4ABV BD Bevel Adjustable (0-45°) 	<b>Bevel Finish &amp; Flange Style</b>		(blank) Open   Damp WET Solite   Wet Location
	<b>Flanged</b> WHSF White, Flanged BLSF Black, Flanged <b>Flangeless<sup>8</sup></b> WHFM White, Flangeless BLFM Black, Flangeless		

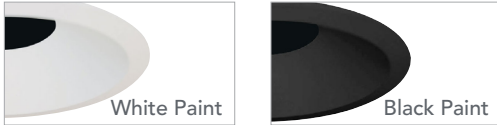
Ceiling Installation
<b>Flanged</b> (blank) Ceiling Thickness < 0.875" CTA4/125 Ceiling Thickness 0.875" - 1.25" CTA4/163 Ceiling Thickness 1.25" - 1.625" CTA4/200 Ceiling Thickness 1.625" - 2"
<b>Flangeless (Gypsum)</b> FMA4/087 Ceiling Thickness < 0.875" FMA4/125 Ceiling Thickness 0.875" - 1.25" FMA4/163 Ceiling Thickness 1.25" - 1.625" FMA4/200 Ceiling Thickness 1.625" - 2"
<b>Flangeless (Wood   Stone   Tile)<sup>10</sup></b> SFM4/087 Ceiling Thickness < 0.875" (B,W) SFM4/125 Ceiling Thickness 0.875" - 1.25" (B,W) SFM4/163 Ceiling Thickness 1.25" - 1.625" (B,W)



REFLECTOR FINISHES



BEVEL FINISHES



ORDERING NOTES

- 32LM not available with ICAT and CP.
- 35K available in 80CRI and 90CRI only. 40K available in 80CRI only. Contact factory for other CCT/CRI combinations.
- For WDIM, 10D only available with 08LM and 12LM; 15D only available with 15LM and 17LM.
- MVOLT standard on GZ1, EZ1, EZB, ECOD, EDXB, EDAB, EDABT8, NLT (unless NLIGHT). Must be 120 for FPC.
- CP or ICAT not available with 17LM WDIM or 22LM TUWH
- Must specify 120 or 277 volts for NLIGHT; MVOLT for NLT. NLIGHT only available with EZ1, EZB (for static white) or GZ1 (for warmDim). NLT not available with CP.
- E6WT20R not available with WDIM, TUWH, EDXB, CP, ICAT, or NLIGHT.
- Must specify FMA4 or SFM4 option.
- WET not available with 4AC20.
- Specify finish: B = Black, W = White.

ACCESSORIES

Beam Control Lenses & Filters		Replacement Optics		Optional Installation Accessories	
DIFF 300	Diffuse Spread lens	<b>Static White Optics</b>		<b>WarmDim Optics</b>	
SOLITE 300	Solite Uniformity Lens	4AXOPT/12D	12° Beam	4AXWDOPT/10D	10° Beam
PRISM 300	Prismatic Lens	4AXOPT/20D	20° Beam	4AXWDOPT/15D	15° Beam
LSPREAD 300	Linear Spread Lens	4AXOPT/24D	24° Beam	4AXWDOPT/20D	20° Beam
HCLBL 300	Hexcell Louver	4AXOPT/30D	30° Beam	4AXWDOPT/24D	24° Beam
UVF 300	UV Filter Lens	4AXOPT/35D	35° Beam	4AXWDOPT/35D	35° Beam
DCCF 300 HAL4250	Daylight Blue Correction	4AXOPT/40D	40° Beam	4AXWDOPT/45D	45° Beam
		4AXOPT/45D	45° Beam	4AXWDOPT/55D	55° Beam
		4AXOPT/50D	50° Beam	4AXWDOPT/50D20D	50°x20° Beam
		4AXOPT/55D	55° Beam		
		4AXOPT/50D20D	50°x20° Beam	<b>Tunable White Optics</b>	
				4AXTWOPT/15D	15° Beam
				4AXTWOPT/20D	20° Beam
				4AXTWOPT/24D	24° Beam
				4AXTWOPT/35D	35° Beam
				4AXTWOPT/45D	45° Beam
				4AXTWOPT/55D	55° Beam
				4AXTWOPT/50D20D	50°x20° Beam
				<b>Bar Hangers</b>	
				HB1	Juno Real Nail® 3 Bar Hangers
				HB26	26" C-Channel Bar Hangers
				HB50	50" C-Channel Bar Hangers
				LB27	27" Linear Bar Hangers
				<i>Note: Fixture supplied with Pro-VI™ Bar Hangers</i>	
				<b>Emergency Inverter</b>	
				IIS 35 HE	Up to 35W Remote Mount Micro Inverter (30LM Excluded)


**PRODUCT SPECIFICATIONS**
**FIELD INTERCHANGEABLE LED LIGHT ENGINE**

- Future proof and easy to maintain-serviceable from below the ceiling

**Static White:**

- <2SDCMBinning
- 2700K|3000K|3500K|4000K CCT
- 80+CRI available for all CCTs
- 90+CRI available for 2700K,3000K,3500K
- 95+ CRI (>90 R9) available for 2700K, 3000K

**WarmDim:**

- Proprietary WarmDim technology mimics halogen,with CCT shifting from 3000K to 1800K when dimmed.
- <1SDCM Binning, 90+CRI

**Tunable White:**

- Tunable CCT range 5000K to 2700K
- <2 SDCM Binning, 90+ CRI

**SPOT-ON! PRECISION OPTICS**

- Field Interchangeable TIR Optics from 12° FWHM to 50° FWHM provide smooth, striation-free beams
- Patented self-adjusting optic holder accommodates up to 2 beam control lenses or filters (US Patent 8,950,911)
- UGR is zero for fixtures aimed at nadir with a cut-off equal to or less than 60°, per CIE 117-1996 Discomfort Glare in Interior Lighting. [UGR FAQs](#)

**ACU-AIM™ PRECISION AIMING**

- Precision Geared hot-aiming via Phillips screwdriver
- 370° horizontal, 45° vertical aiming
- Optimized center beam optics translates center of the beam through the center of the aperture resulting in maximum efficiency and low aperture brightness
- Numeric indicator marks allow contractor to pre-aim fixtures

**HIGH QUALITY TRIMS**

- Available with die cast bevels and spun aluminum reflectors.
- Available in Self Flanged and Flangeless
- Must Specify FMA4 for gypsum flangeless installation
- Must specify SFM4 for wood, stone, tile flangeless installation

**FIELD REPLACEABLE DRIVER**

- Accommodates 120-277V input and multiple control protocols down
- Dims without perceived flicker to <1% depending on driver specified
- Field replaceable without tools from below the ceiling
- >0.9 Power Factor

**BUY AMERICAN ACT**

- This product is assembled in the USA and meets the Buy America(n) government procurement requirements under FAR, DFARS and DOT regulations.
- Please refer to [www.acuitybrands.com/resources/buy-american](http://www.acuitybrands.com/resources/buy-american) for additional information.

**WARRANTY & RATED LIFE**

- LED is rated for >50,000 hours at 70% lumen maintenance
- 5-year limited warranty. This is the only warranty provided and no other statements in this specification sheet create any warranty of any kind. All other express and implied warranties are disclaimed. Complete warranty terms located at: [www.acuitybrands.com/support/warranty/terms-and-conditions](http://www.acuitybrands.com/support/warranty/terms-and-conditions)

**EMERGENCY BATTERY**

- Provides a minimum of 700 lumens (4AC, 3000K, 80CRI) for minimum duration of 90 minutes.
- Accessible below ceiling for simple service; Self-Testing
- Supplied with Class-2 plenum rated remote test switch
- CEC T20 Compliant

**NEW CONSTRUCTION MOUNTING**

- Features patented (US Patent 8,038,113) Pro-VI™ bar hanger system offering compatible with wood stud and T-bar
- All fixtures also feature vertically adjustable mounting brackets (butterfly brackets)
- Centerline indicators on plaster frame and patented (US Patent 8,277,090) Tru-Line™ Platform featuring +/- 1/2" translation aids fixture alignment after installation, prior to finishing the ceiling.

**JUNCTION BOX**

- Rated for (4) No. 12 AWG 90°C through branch circuit conductors.
- Includes (6) 1/2", (1) 3/4", (4) Non-metallic sheathed cable knock-outs.
- Push-in electrical connectors for field connections.

**CODES & LABELS**

- UL & cUL listed for through branch wiring, damp location
- Meets energy code Air Leakage requirements per ASTM E283
- ENERGY STAR® certified with select trims and housings
- Can be used to comply with Title 24, Part 6 with select trims and housings. Reference T24 JA-8 database for list of compliant housings and trims.
- ICAT Static White housings are rated for direct contact with insulation, including open and closed cell spray foam\* with a maximum R-value of 7.2R/in. This allows use in ceiling cavities insulated up to R60.
- ICAT WarmDim and Tunable White housings are rated for direct contact with insulation, including open cell spray foam\* with a maximum R-value of 3.8R/in. They are not suitable for use with closed cell spray foam. \*Note: Options: "12LM WDIM", "ECOD", "EDXB", "NLT" & "NLIGHT" are excluded and not suitable for use with spray foam insulation.
- Union made

**CEILING THICKNESS**

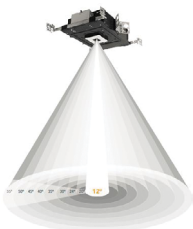
- Accommodates 1/2" to 2" ceiling thickness

**A+ CAPABLE LUMINAIRE**

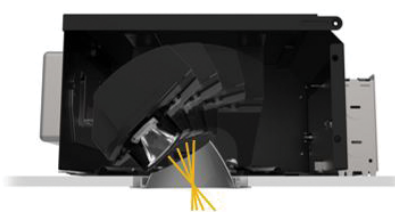
This item is an A+ capable luminaire, which has been designed and tested to provide consistent color appearance and out-of-the-box control compatibility with simple commissioning, when used with Acuity Brands controls products.

- All configurations of this luminaire are calibrated and tested to meet the Acuity Brand's specification for chromatic consistency - including color rendering, color fidelity and color temperature tolerance around standard CIE chromaticity coordinates.

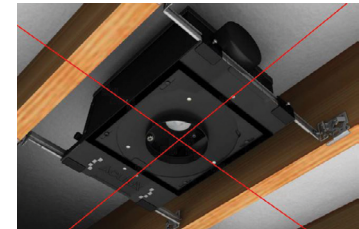
To learn more about Acuity A+ standards, specifications and testing, visit [www.acuitybrands.com/aplus](http://www.acuitybrands.com/aplus).

**Spot On! Precision Optics**


Smooth, striation-free beams with field-interchangeable TIR optics from 12° to 50°

**Acu-Aim™ Precision Aiming**


Precision geared hot-aiming is effortless. Centerbeam optics results in lower aperture brightness

**Tru-Line™ Precision Installation**


Pro-VI™ bar hangers, coupled with +/-1/2" aperture translation makes perfect installation achievable



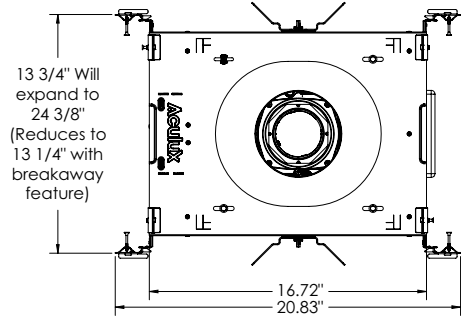
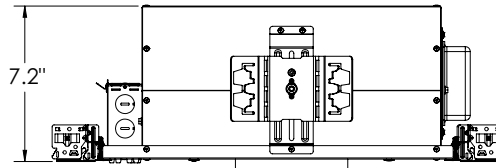
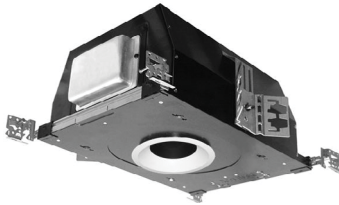
DIMENSIONS

New Construction Adjustable (AX4 A)

ICAT/Non-ICAT: 12LM | 17LM | 22LM | 27LM

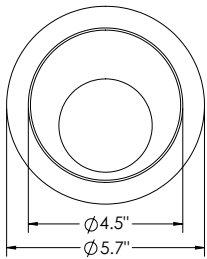
Non-ICAT: 32LM

Ceiling Cutout: 5-1/4" (refer to installation instructions for flangeless ceiling cutout)

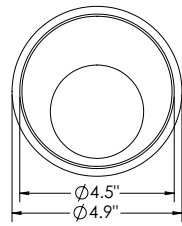


Reflector Trim (4AC & 4AC20)

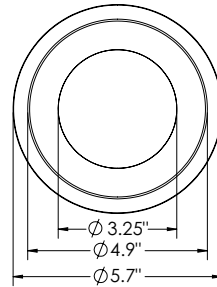
Bevel Trim (4ABV)



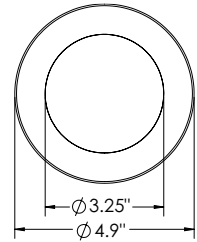
Flanged



Flangeless



Flanged



Flangeless

ELECTRICAL SPECIFICATIONS

Static White

LUMEN PACKAGE	12LM		17LM		22LM		27LM		32LM	
Voltage	120	277	120	277	120	277	120	277	120	277
Input Watts	9.5	10.0	13.7	14.7	19.5	20.4	25.8	26.4	33.4	33.6
Input Current	0.08	0.04	0.11	0.06	0.16	0.08	0.22	0.10	0.28	0.13
Frequency	50/60 Hz		50/60 Hz		50/60 Hz		50/60 Hz		50/60 Hz	
Power Factor	0.9 MIN.		0.9 MIN.		0.9 MIN.		0.9 MIN.		0.9 MIN.	

WarmDim

LUMEN PACKAGE	08LM		12LM		15LM		17LM	
Voltage	120	277	120	277	120	277	120	277
Input Watts	16.1	16.5	25.6	25.9	28.9	29.0	32.8	32.9
Input Current	0.14	0.06	0.21	0.10	0.24	0.11	0.27	0.12
Frequency	50/60 Hz		50/60 Hz		50/60 Hz		50/60 Hz	
Power Factor	0.9 MIN.		0.9 MIN.		0.9 MIN.		0.9 MIN.	

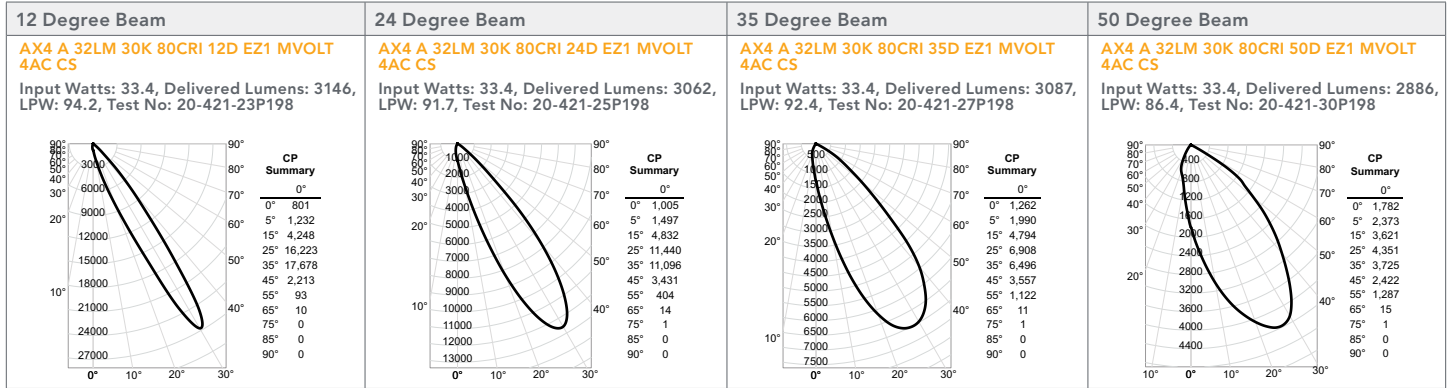
Tunable White

LUMEN PACKAGE	12LM		15LM		22LM	
Voltage	120	277	120	277	120	277
Input Watts	18.2	19.5	27.2	28.0	36.9	37.5
Input Current	0.15	0.08	0.23	0.11	0.31	0.14
Frequency	50/60 Hz		50/60 Hz		50/60 Hz	
Power Factor	0.9 MIN.		0.9 MIN.		0.9 MIN.	



PHOTOMETRICS (@ 30° TILT) - 4AC

Tested in accordance to IESNA LM79



Measured 32LM   30K   80 CRI	Beam Spread	CBCP	Horizontal Aiming Angles						Vertical Aiming Angles									
			0°			30°			30°				45°					
			MH	FC	L	W	FC	L	W	D	FC	X	L	W	FC	X	L	W
	12D	26685	6	741	1.4	1.4	481	1.9	1.6	3	371	5.2	2.9	1.4	1048	3.0	1.4	1.0
			8	417	1.9	1.9	271	2.5	2.2	4	208	6.9	3.9	1.9	590	4.0	1.9	1.3
			10	267	2.3	2.3	173	3.1	2.7	5	133	8.7	4.9	2.3	377	5.0	2.4	1.6
			12	185	2.8	2.8	120	3.7	3.2	6	93	10.4	5.8	2.8	262	6.0	2.8	2.0
			14	136	3.3	3.3	88	4.4	3.8	7	68	12.1	6.8	3.3	193	7.0	3.3	2.3
	24D	12566	4	785	1.7	1.7	510	2.4	2.0	2	393	3.5	4.1	1.7	1111	2.0	1.8	1.2
			6	349	2.6	2.6	227	3.5	3.0	3	175	5.2	6.1	2.6	494	3.0	2.7	1.9
			8	196	3.5	3.5	128	4.7	4.0	4	98	6.9	8.1	3.5	278	4.0	3.7	2.5
			10	126	4.4	4.4	82	5.9	5.0	5	63	8.7	10.2	4.4	178	5.0	4.6	3.1
			12	87	5.2	5.2	57	7.1	6.0	6	44	10.4	12.2	5.2	123	6.0	5.5	3.7
	35D	7008	4	438	2.5	2.5	284	3.4	2.8	2	219	3.5	6.8	2.5	619	2.0	2.7	1.7
			6	195	3.7	3.7	126	5.1	4.2	3	97	5.2	10.3	3.7	275	3.0	4.1	2.6
			8	110	4.9	4.9	71	6.8	5.7	4	55	6.9	13.7	4.9	155	4.0	5.4	3.5
			10	70	6.1	6.1	46	8.4	7.1	5	35	8.7	17.1	6.1	99	5.0	6.8	4.3
			12	49	7.4	7.4	32	10.1	8.5	6	24	10.4	20.5	7.4	69	6.0	8.1	5.2
	50D	4362	4	273	3.2	3.2	177	4.5	3.7	2	136	3.5	12.2	3.2	386	2.0	3.8	2.3
			6	121	4.8	4.8	79	6.7	5.5	3	61	5.2	18.3	4.8	171	3.0	5.7	3.4
			8	68	6.4	6.4	44	9.0	7.4	4	34	6.9	24.4	6.4	96	4.0	7.6	4.5
			10	44	8.0	8.0	28	11.2	9.2	5	22	8.7	30.5	8.0	62	5.0	9.5	5.6
			12	30	9.6	9.6	20	13.5	11.1	6	15	10.4	36.7	9.6	43	6.0	11.4	6.8

In vertical aiming applications, aim point (X) is determined by dividing distance from the wall (D) by the tangent of the desired aim angle (A) (0.5774 for 30°, 1.0 for 45°).

CBCP • Centerbeam candlepower FC • Footcandles at beam center (aim point)

LUMEN | CBCP MULTIPLIERS

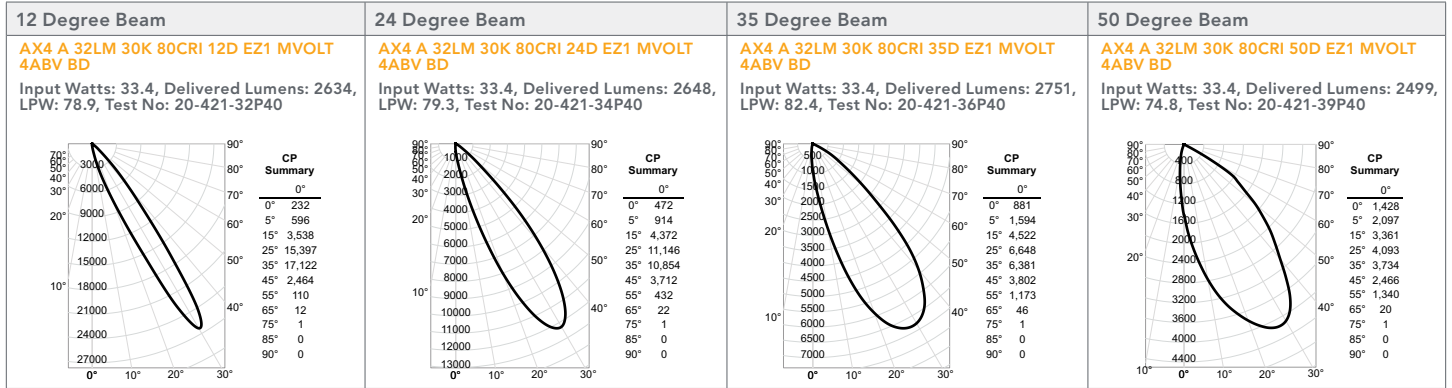
CCT	80+ CRI	90+ CRI	95+ CRI	12LM	17LM	22LM	27LM	32LM
2700K	0.95	0.83	0.68	0.39	0.50	0.68	0.84	1.0
3000K	1.00	0.87	0.73					
3500K	1.02	0.89	-					
4000K	1.04	-	-					

\*Refer to website for additional photometry (alternate trims, CCT/CRI, lumen packages)



PHOTOMETRICS (@ 30° TILT) - 4ABV

Tested in accordance to IESNA LM79



Measured 32LM   30K   80 CRI	Beam Spread	CBCP	Horizontal Aiming Angles						Vertical Aiming Angles									
			0°			30°			30°				45°					
			MH	FC	L	W	FC	L	W	D	FC	X	L	W	FC	X	L	W
	12D	26261	6	729	1.3	1.3	474	1.8	1.6	3	365	5.2	2.8	1.3	1032	3.0	1.4	1.0
			8	410	1.8	1.8	267	2.4	2.1	4	205	6.9	3.7	1.8	580	4.0	1.8	1.3
			10	263	2.2	2.2	171	3.0	2.6	5	131	8.7	4.7	2.2	371	5.0	2.3	1.6
			12	182	2.7	2.7	118	3.6	3.1	6	91	10.4	5.6	2.7	258	6.0	2.7	1.9
			14	134	3.1	3.1	87	4.2	3.6	7	67	12.1	6.5	3.1	189	7.0	3.2	2.2
	24D	12278	4	767	1.7	1.7	498	2.3	2.0	2	384	3.5	4.0	1.7	1085	2.0	1.8	1.2
			6	341	2.6	2.6	222	3.5	3.0	3	171	5.2	6.0	2.6	482	3.0	2.7	1.8
			8	192	3.5	3.5	125	4.7	4.0	4	96	6.9	8.0	3.5	271	4.0	3.6	2.4
			10	123	4.3	4.3	80	5.9	5.0	5	61	8.7	10.1	4.3	174	5.0	4.5	3.1
			12	85	5.2	5.2	55	7.0	6.0	6	43	10.4	12.1	5.2	121	6.0	5.4	3.7
	35D	6786	4	424	2.5	2.5	275	3.4	2.9	2	212	3.5	7.0	2.5	600	2.0	2.7	1.8
			6	189	3.7	3.7	122	5.1	4.3	3	94	5.2	10.4	3.7	267	3.0	4.1	2.6
			8	106	5.0	5.0	69	6.8	5.7	4	53	6.9	13.9	5.0	150	4.0	5.5	3.5
			10	68	6.2	6.2	44	8.5	7.1	5	34	8.7	17.4	6.2	96	5.0	6.8	4.4
			12	47	7.4	7.4	31	10.2	8.6	6	24	10.4	20.9	7.4	67	6.0	8.2	5.3
	50D	4152	4	260	3.2	3.2	169	4.5	3.7	2	130	3.5	12.2	3.2	367	2.0	3.8	2.3
			6	115	4.8	4.8	75	6.7	5.5	3	58	5.2	18.3	4.8	163	3.0	5.7	3.4
			8	65	6.4	6.4	42	9.0	7.4	4	32	6.9	24.4	6.4	92	4.0	7.6	4.5
			10	42	8.0	8.0	27	11.2	9.2	5	21	8.7	30.5	8.0	59	5.0	9.5	5.6
			12	29	9.6	9.6	19	13.5	11.1	6	14	10.4	36.7	9.6	41	6.0	11.4	6.8

In vertical aiming applications, aim point (X) is determined by dividing distance from the wall (D) by the tangent of the desired aim angle (A) (0.5774 for 30°, 1.0 for 45°).

CBCP • Centerbeam candlepower FC • Footcandles at beam center (aim point)

LUMEN | CBCP MULTIPLIERS

CCT	80+ CRI	90+ CRI	95+ CRI	12LM	17LM	22LM	27LM	32LM
2700K	0.95	0.83	0.68	0.39	0.50	0.68	0.84	1.0
3000K	1.00	0.87	0.73					
3500K	1.02	0.89	-					
4000K	1.04	-	-					

\*Refer to website for additional photometry (alternate trims, CCT/CRI, lumen packages)



**DIMMER COMPATIBILITY**

**Phase Dimming (FPC) - Incandescent, Magnetic Low Voltage and Electronic Low Voltage Dimming**

- Dimming range of 100% down to as low as 1% a minimum load of one fixture
- Dimming range and maximum rated load vary depending on dimmer type and model. See maximum load calculations below to identify max number of luminaires per dimmer.

**Incandescent (INC) and Magnetic Low Voltage (MLV)**

Example: Fixture Rating = 13W; Dimmer Rating = 600W  
 Equivalent Incandescent Load (EIL) = 50%  
 (600/13W) X 0.5 = 23 Fixtures per Dimmer

**Electronic Low Voltage (ELV)**

Example: Fixture Rating = 13W; Dimmer Rating = 600W  
 Equivalent Incandescent Load (EIL) = 75%  
 (600/13W) X 0.75 = 34 Fixtures per Dimmer

**INCANDESCENT, MLV, ELV WALL DIMMERS**

**Static White**

Manf.	Product Family	Series	Type	Min Light(%)
Lutron	Glyder	GLV*	MLV	2
Leviton	SureSlide	6633*	INC	2
Lutron	Diva	DVLV	MLV	6
Lutron	Diva	DV*	INC	2
Lutron	Skylark	SLV*	MLV	3
Lutron	RadioRA 2	RRD-6D*	INC	2
Lutron	RadioRA 2	RRD-10ND*	INC	2
Leviton	SureSlide	6613	MLV	5
Leviton	IllumaTech	IPL06-10Z*	INC	3
Lutron	Diva	DVCL	INC	3
Insteon	Keypad Dimmer	2334-232	INC	2
Insteon	Dimmer Switch	2477D*	INC	2
Control4	Forward Phase Dimmer	C4-FPD 120	INC	2
Lutron	Nova	NTELV	ELV	6
Lutron	Diva	DVELV*	ELV	2
Lutron	Lutron Maestro	MAELV*	ELV	5
Leviton	Vizia	VPE06-1LX	ELV	2
Leviton	Illumatech	IPE04*	ELV	5
Lutron	Lutron RadioRA2	RRD-6NA	PHA	2
Control4	Adaptive Phase Dimmer	C4-APD 120	PHA	2
Lutron	RadioRA2	RRD-6NA*	PHA	2
Control4	Adaptive Phase Dimmer	C4-APD 120	PHA	2

**INTEGRATED CONTROL SYSTEMS**

**Static White**

Manf.	Product Family	Series	Type	Min Light(%)
Lutron	LP	LP-RPM-4U	INC	5
Lutron	LP	LP-RPM-4A*	PHA	2
Lutron	GrafikEye QS	QSGRJ-3P	PHA	2
Lutron	GrafikEye QS	PHPM-PA-120	PHA	2
Lutron	HomeWorks QS	PHPM-PA-120	PHA	2
Lutron	HomeWorks QS	HW-RPM-4A*	PHA	2
Acuity	nLight nSP5PCD ELV	nSP5PCD*	ELV	4
Insteon	Micro Module Dimmer	2442-222*	INC	2
Control4	8 Ch Dimmer	C4-DIN-8DIM-E	PHA	2

\*: Aculux recommended dimmers

**WarmDim® **

Manf.	Product Family	Series	Type	Min Light(%)
Sensor Switch	WPD	WPD*	INC	1
Leviton	Illmatech	IPM06-1LZ	MLV	3
Leviton	Illmatech	IPI06-1LZ	INC	2
Lutron	Diva	DVCL	INC	1
Leviton	SureSlide	6633*	INC	1
Leviton	SureSlide	6613*	MLV	1
Leviton	SureSlide	IPL06	INC	1
Control4	Forward phase dimmer	C4-FPD 120 FWD*	INC	1
Lutron	Diva	DVELV*	ELV	1
Lutron	Maestro	MAELV*	ELV	1
Lutron	Vive	MRF25-6ELV*	ELV	1
Lutron	Caseta	PD-5NE*	ELV	1
Leviton	Illumatech	IPE04	ELV	4
Lutron	Maestro	RRD-PRO REV	PHA	1
Control4	Phase Adaptive Dimmer	C4-APD 120*	PHA	1
Lutron	Maestro	RRD-PRO FWD*	PHA	1

**WarmDim® **

Manf.	Product Family	Series	Type	Min Light(%)
Acuity	nLight nSP5PCD ELV	nSP5PCD ELV*	ELV	1
Acuity	nLight nSP5PCD ELV	PCDM*	ELV	1
Acuity	Fresco LMPM	LMPM 2D 2L*	PHA	1
Lutron	LP	LP-RPM-4A *	PHA	1
Lutron	LP	LP-RPM-4U*	INC	1
Lutron	GrafikEye QS	Lutron PHPM-PA-120*	PHA	1
Lutron	GrafikEye QS	Lutron Grafik Eye QSGRJ-3P*	MLV	1
Lutron	HomeWorks QS	PHPM-PA-120*	PHA	1
Lutron	HomeWorks QS	HW-RPM-4A*	PHA	1
Legrand	Wattstopper	LMRC-221-U*	PHA	1
Control4	8 Ch Dimmer	C4-DIN-8DIM-E*	PHA	1
Crestron	Phase Adaptive Dimmer	6501748*	PHA	1




**0-10V Dimming (GZ1, EZ1, EZB drivers)**
**WALL DIMMERS**

Manf.	Product Family	Series	Type	-EZ1/-GZ1 Min. Light (%)	-EZB Min. Light (%)
Lutron	Diva	DVTV	0-10V	1	<1
Lutron	Nova	NFTV	0-10V	1	<1
Lutron	Nova T	NTFTV	0-10V	1	<1

**INTEGRATED CONTROL SYSTEMS**

Manf.	Product Family	Series	Type	-EZ1/-GZ1 Min. Light (%)	-EZB Min. Light (%)
Lutron	GrafikEye QS	GRX-TVI*	0-10V	1	<1
Lutron	HomeWorks QS	GRX-TVI*	0-10V	1	<1
Lutron	HomeWorks QS	GRX-TVM2*	0-10V	1	<1
Lutron	LCP128	GRX-TVI*	0-10V	1	<1
Lutron	LCP128	GRX-TVM2*	0-10V	1	<1
Lutron	LP	GRX-TVM2*	0-10V	1	<1
Lutron	RadioRA2	LMJ-5T-DV-B	0-10V	1**	<1
Crestron	GreenLight	DIN-4DIMFLV4	0-10V	1	<1
Lutron	Energi Tripak	RMJ-5T-DV-B	0-10V	1	<1
Wattstopper	DLM	LMRC-211	0-10V	1	<1
Insteon	Ballast Dimmer	2475DA2	0-10V	1	<1

\*: Aculux recommended dimmers

\*\*: Not tested with -GZ1

+: Requires a separate relay module to turn luminaire on/off