



Confinement & Correctional

Demanding Environments

Introduction

Design & Construction:

Cold rolled steel or
stainless-steel housing

Contraband trap standard
surface mount

White, amber, or red
nightlight options

Tamper resistant security
hardware

Ligature resistant
construction

Confinement fixtures resolve unique challenges not seen in any other environment. Products installed in cells are subject to deliberate and repeated tampering. These fixtures must be able to withstand calculated, creative, and repeated attempts to disassemble, modify, and otherwise compromise the integrity of the protective envelope.

The result of these design efforts is a series of confinement fixtures developed to be the most durable, simple to service, and efficient products available for the confinement market. All optical electronic components are mounted on an individually removable tray, designed to be replaced in the cell as a single-unit utilizing a single electric connection. Hardened tamper resistant fasteners, concealed hinges, and heavy-gauge stainless steel construction guard against deliberate tampering. These features provide best in class performance with minimal operating expense.



Strength

The Confinement Series commonly features Z-brackets that are secured to hardened studs, which are directly welded to the housings. Fixtures are available in up to 12-gauge stainless steel. Additionally, curves and sloped surfaces contribute strength and rigidity to the design.

Sustainability

The outstanding technology and strength of these fixtures provide longevity on multiple levels. Lifetime reduction in energy consumption as well as the ability to withstand the challenges in a confinement environment ensure decades long sustainability.

Technology

The Confinement Series of luminaires was designed from the ground up to use LEDs. Additionally, a unique, modular service tray allows for future upgrades as well as simplified service.





HLCMP Confinement Corner Mount

- + Corner mount luminaire
- + Manufactured with a one piece die formed housing
- + Available in stainless or cold rolled steels with smooth corners
- + Hinge design protects from unauthorized fixture entry and options provide suitability for minimum to maximum security locations
- + Ligature resistant design is standard for all variations of the HLCMP series

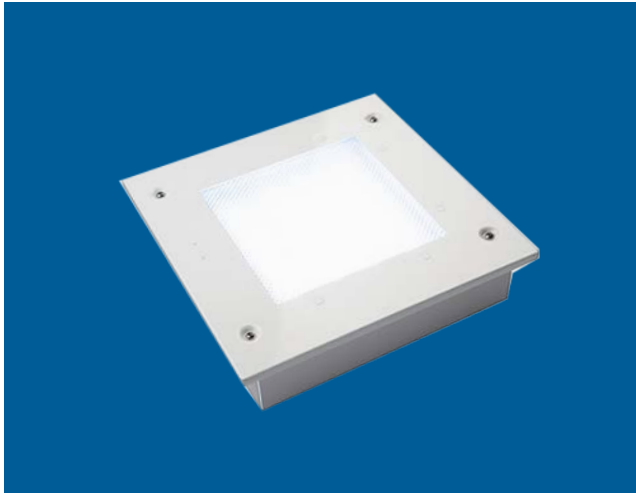
HLSMP Confinement Surface Mount

- + Rectilinear luminaire
- + Manufactured with a one piece die formed housing
- + Available in stainless or cold rolled steels with smooth corners
- + Hinge design protects from unauthorized fixture entry and options provide suitability for minimum to maximum security locations



HLWMP Confinement Wall Mount

- + Wall mount confinement luminaire
- + Available options provide suitability for minimum to maximum security locations
- + Ligature resistant design is standard for all variations of the WMP series
- + Constructed with a one piece die formed housing in stainless or cold rolled steels and all corners and seams continuously welded smooth
- + Hinge design protects from unauthorized fixture entry



HLRMP Confinement Recessed Mount

- + Recessed confinement luminaire ideally suited for behavioral institutions and correctional facilities
- + One-piece die formed cold rolled steel housing.
- + Suitable for both concrete pour and grid ceilings with a convertible door
- + Flange kit can be purchased separately to adjust grid to flange setup in the field
- + Ligature resistant design is standard for all variations of the HLRMP.

HLRMQ Confinement Recessed Mount

- + Recessed confinement luminaire
- + Ligature-resistant construction and is ideally suited for behavioral institutions and correctional facilities
- + Constructed with a one piece die formed housing in stainless or cold rolled steels and all corners and seams continuously welded smooth
- + Hinge design protects from unauthorized fixture entry.



HLSMQ Confinement Surface Mount

- + Square surface mount confinement luminaire
- + Available options provide suitability for minimum to maximum security locations
- + Constructed with a one piece die formed housing in stainless or cold rolled steels and all corners and seams continuously welded smooth
- + Hinge design protects from unauthorized fixture entry.



Confinement & Correctional



Acuity Brands Lighting, Inc.

Holophane Headquarters,
One Lithonia Way, Conyers GA 30012

Contact your local Holophane factory sales representative for application assistance, and computer-aided design and cost studies.

Warranty Five-year limited warranty.
Full warranty terms located at
[www.acuitybrands.com/
CustomerResources/
Terms_and_conditions.aspx](http://www.acuitybrands.com/CustomerResources/Terms_and_conditions.aspx)

Visit our web site at www.holophane.com

*Product specifications may change without notice.
Please contact your local Holophane factory sales
representative for the latest product information.*