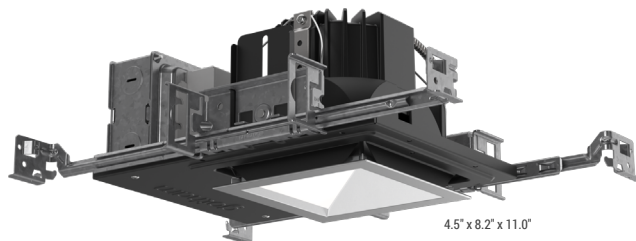


IVO™ 4" Square Wall Wash

New Construction



Lensed Wall Wash



New construction housing shown. Please see pages 5-6 for full set of dimensional drawings.

Flange Styles



Flanged



Flangeless



Flangeless in Millwork

Reflector Colors



Clear Alzak



Gold



Pewter



Wheat



Black



White
Anti-Microbial



Soft White

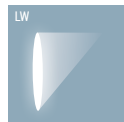


Bronze

Feature Set

- Perfect Color™ consistency within ½-step MacAdam Ellipse
- Exceptional color rendering with 80 CRI, 90 CRI, or 95 CRI minimum
- Asymmetric Wall Wash distribution enables uniformity from floor to ceiling.
- Batwing shape left-to-right widens beam coverage on the wall and reduces scalloping.
- Up to 90% lumen maintenance at 55,000 hours
- Wet Location standard, covered ceiling
- Easy installation and servicing with snap-in Driver

Distribution / Beam Angles



Superior Performance*

Nominal Lumens	05LM	07LM	10LM	15LM	20LM	25LM	30LM	35LM	40LM	45LM
Delivered Lumens	323	482	650	975	1291	1605	1793	2174	2491	2779
Wattage	5.1	7.3	9.8	15.0	20.5	26.8	29.7	34.4	41.8	45.3
Lumens per Watt	63	66	66	65	63	60	60	63	60	61

*Based on 3500K 80CRI LW AR LSS

IVO 4" Square Product Family



Downlight



Lensed WW



Surface Cylinder



Pendant Cylinder



Wall Cylinder



Wall Adjustable Cylinder



Luminaire Type:

Catalog Number:
EXAMPLE: IVO4SQ WW 10LM 35K 80CRI MVOLT MIN10 ZT NCH LW AR LSS F
ORDERING INFORMATION

Series	Function	Lumen Packages	Kelvin Temperature	Color Rendering Index	Dimming Level	Voltage
IVO4SQ 4" Square Recessed	WW Wall Wash	05LM ¹ 500 Lumens	27K 2700K	80CRI 80+ CRI	MIN10 Min 10% Dim Level	MVOLT Multi-Volt input, 120V-277V
		07LM 750 Lumens	30K 3000K	90CRI ² 90+ CRI	MIN1 Min 1% Dim Level	120V input
		10LM 1000 Lumens	35K 3500K	95CRI ² 95+ CRI	DARK Min 0.1% Dim Level, Dim-to-Dark	347V input
		15LM 1500 Lumens	40K 4000K			
		20LM 2000 Lumens	50K 5000K			
		25LM 2500 Lumens				
		30LM 3000 Lumens				
		35LM 3500 Lumens				
		40LM ¹⁶ 4000 Lumens				
		45LM ¹⁷ 4500 Lumens				

Control Input	Emergency Option	Housing Style
ZT ⁴ Generic 0-10V	(Blank) No Emergency Pack	NCH Non-IC Housing (new construction only)
EZT EldoLED 0-10V	E7W ⁸ IOTA 7W Emergency battery pack, Constant Power, Title 20 compliant, integrated test switch.	ICAT IC/Airtight Housing (new construction only) 1500 lm max
ELV ⁵ Phase Dimming (Forward/Reverse) (120V only)	E7WR ^{7,8} IOTA 7W Emergency battery pack, Constant Power, Title 20 compliant, remote test switch.	CP Chicago Plenum CCEA (new construction only)
DMX ⁶ DMX	E10W ⁹ IOTA 10W Emergency battery pack, Constant Power, Title 20 compliant, integrated test switch	
DALI ⁶ DALI-2	E10WR ⁹ IOTA 10W Emergency battery pack, Constant Power, Title 20 compliant, remote test switch.	
NLIGHT Wired controls by nLight	GTD ^{8,11} Generator Transfer Device	
NLTAIR2 Wireless controls by nLight Air		
NLIGHTER Wired controls by nLight with UL924 listed emergency operation		
NLTAIREM2 Wireless controls by nLight Air with UL924 listed emergency operation		

Options	Trim Style	Trim Color	Trim Finish	Flange Style
SF Single Fuse, specify 120 or 277	LW Lensed Wall Wash	AR Clear Metallized	LD Matte Diffuse	F Self Flanged (color matches trim)
WL Wet Location		BR Black (painted)	LSS Semi Specular	FL Flangeless (Drywall)
		GR Gold Metallized		FLM ¹⁸ Flangeless Millwork
		PR Pewter Metallized		FBL ¹³ Flange Only Black
		WTR Wheat Metallized		FWR ¹⁴ Flange Only White
		BZR ^{11,15} Dark Bronze (painted)		FRALTBD ¹² Flange Only RAL
		WMR ¹¹ Soft White Matte (painted)		FCPC Flange Only Custom Paint Color
		WRAMF ¹¹ White Gloss with Anti-Microbial (painted)		
		TRALTBD ¹² Trim RAL # TBD (TBD for pricing only)		
		TCPC Trim Custom Paint Color TBD (TBD for pricing only)		

ORDERING NOTES

- 05LM only available with ELV or ZT. Not available with 347V.
- 90CRI not available with 50K, 95CRI not available with 35K, 40K or 50K.
- 347 only available with ZT and MIN1 or MIN10. 40LM max. Not available with nLight or Emergency options.
- ZT is not available with DARK.
- ELV only available with MIN1 and 120V.
- DMX and DALI are only available with DARK.
- E7WR is not available with CP housings.
- E7W and E7WR and not available with ICAT.
- E10W, E10WR and GTD not available with ICAT or CP.
- GTD only available with NCH and ZT, ELV, or EZT.
- Not available with Trim Finishes.
- Replace with applicable RAL number and finish when ready to order. See [RAL BROCHURE](#) for available color options.
- For use with different reflector flange color only (i.e AR, BZR, GR, PR, WTR, WR, WMR, WRAMF). Not available with BR (black reflector) or FL or FLM (flangeless) options.
- For use with different reflector flange color only (i.e AR, BR, BZR, GR, PR, WTR). Not available with WR, WMR, WRAMF (white reflector) or FL or FLM (flangeless) options.
- Corrosion Resistant Powder Coat.
- 40LM and CP requires Marked Spacing.
- 45LM and NCH requires Marked Spacing.
- FLM requires Millwork Ceiling Cutout Template accessory, IVO*FLMKIT. Millwork Router Bit accessory, IVOFLMBIT, is optional or use similar. Millwork Adapter is included.

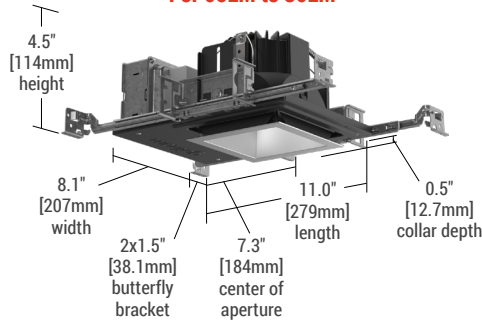
ACCESSORIES – order as separate catalog numbers (shipped separately)	
GRASQ4-6IVO	Square goof ring adaptor, 4" ID, 6.5" OD
CTAIVODL20	Trim ceiling thickness adaptors for 1-1/4" to 2" thick ceilings and ≤ 30LM (includes set of two for one trim).
CTAIVODL27	Trim ceiling thickness adaptors for 2" to 2-3/4" thick ceilings and ≤ 30LM (includes set of two for one trim).
CTAIVODL30	Trim ceiling thickness adaptors for 2-3/4" to 3" thick ceilings and ≤ 30LM (includes set of two for one trim).
IVO4SQFLMKIT	IVO 4" Square Flangeless in Millwork Ceiling Cutout Template (min. 1 required per install)
IVOFLMBIT	IVO Flangeless in Millwork Straight Router Bit, ¼" Shank with Bearing (optional)



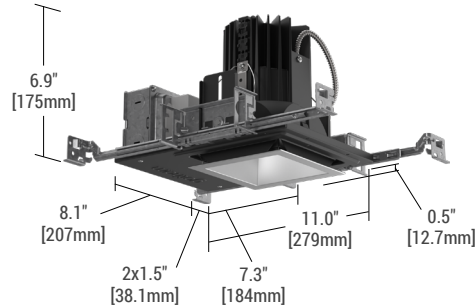
New Construction Dimensions

- Dimensions in inches [millimeters] are overall width and height (including mounting hardware Butterfly Brackets / Hanger Bars), length excludes extendable Hanger Bars.
- ½" clearance on all sides from non-combustible materials for non-IC applications required, unless marked spacing is noted otherwise.
- nLight Air Antenna extends 1.5" off the end of the j-box (lengthwise).
- Ceiling cutout for Flanged or Flangeless Trim is 5.0"
- Fixture with Marked Spacing require the following clearances (min): 24" center-to-center, 12" center to side building member, 2" overhead to building member
- Hanger Bars are extendable from 8.5" to 24".

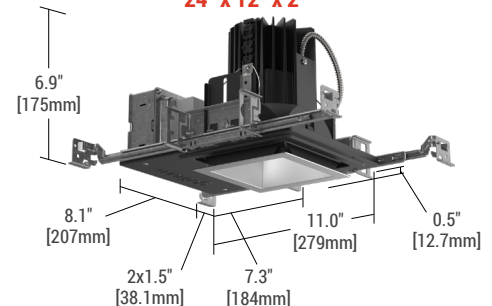
**Non-IC Housing (NCH)
For 05LM to 30LM**



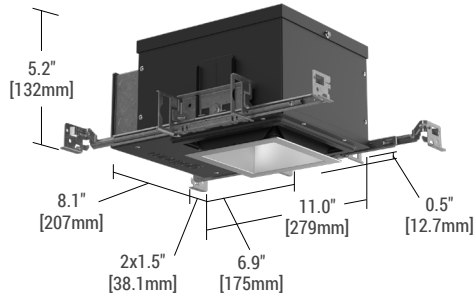
**Non-IC Housing (NCH)
For 35LM to 40LM**



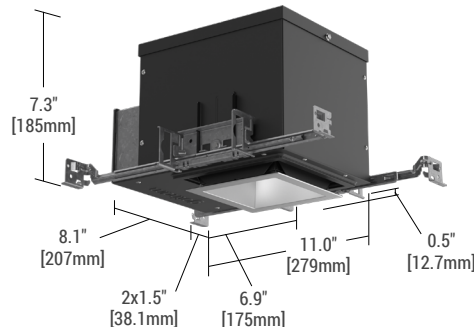
**Non-IC Housing (NCH)
For 45LM – MARKED SPACING
24" x 12" x 2"**



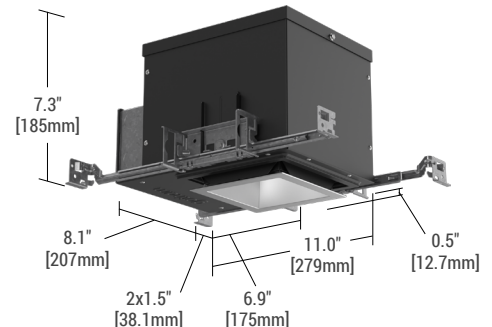
**Chicago Plenum Housing (CP)
For 05LM to 25LM**



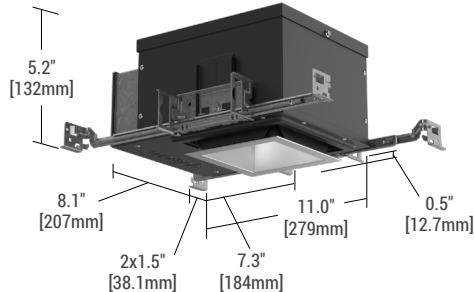
**Chicago Plenum, New Construction Housing (CP)
For 30LM to 35LM**



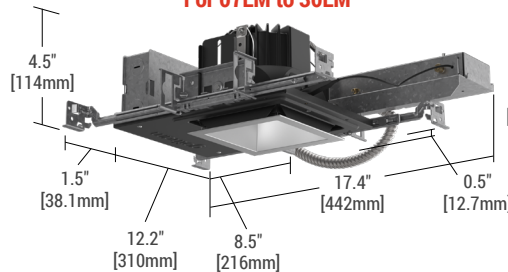
**Chicago Plenum Housing (CP)
For 40LM – MARKED SPACING
24" x 12" x 2"**



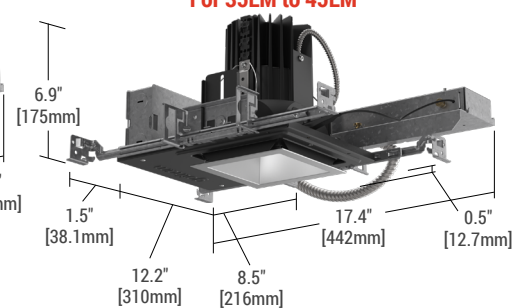
**IC rated Housing (ICAT)
For 05LM to 15LM**



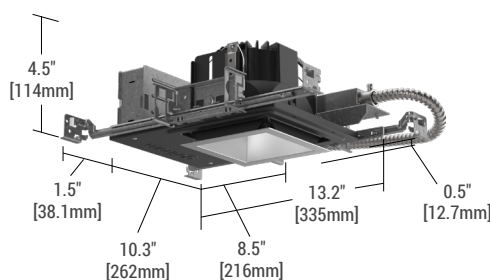
**Non-IC Housing (NCH)
with E7Wx, E10Wx Emergency Battery
For 07LM to 30LM**



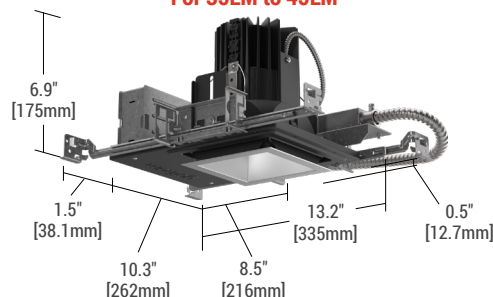
**Non-IC Housing (NCH)
with E7Wx, E10Wx Emergency Battery
For 35LM to 45LM**



**Generator Transfer Device Housing (GTD)
For 07LM to 30LM**



**Generator Transfer Device Housing (GTD)
For 35LM to 45LM**



TRIM OPTIONS

Trim Style and Flange Option

- Dimensions in inches [millimeters]
- Orient Wall Wash Trim with lens facing the wall.



Wall Wash Flanged
(LW) (F)



Wall Wash Flangeless
(LW) (FL)



Wall Wash Flangeless Millwork
(LW) (FLM)

Wall Wash Flange Outer Dimension:	□ 5.5"	[140]
Wall Wash Flangeless/Millwork Outer Dimension:	□ 4.8"	[121]
Wall Wash Inner Dimension:	□ 4.3"	[109]

Trim Color



Clear Anodized
(AR)



Soft White
Matte Painted
(WMR)



Black Anodized
(BR)



Gold Anodized
(GR)



Pewter Anodized
(PR)



Wheat Anodized
(WTR)



Dark Bronze
Gloss Painted
(BZR)



White Anti-Microbial
Gloss Painted
(WRAMF)

Parabolic Flanged shown.

Optical Finish



Semi-Specular
(LSS)



Specular
(LS)



Matte Diffuse
(LD)

Clear Anodized shown.

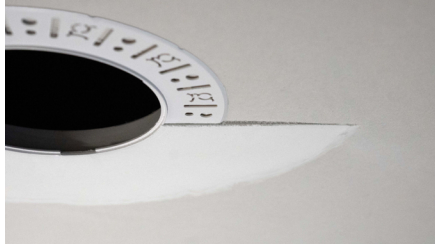
Note: These colors were carefully reproduced to give as true a depiction as possible of the finished product color. Some colors, however, may vary slightly from actual appearance due to display/printing variations and limitations. Please contact a Gotham representative for an Architectural Color Chip Kit (GCOLORS KIT), consisting of Powder-Coated and Plated Finishes.



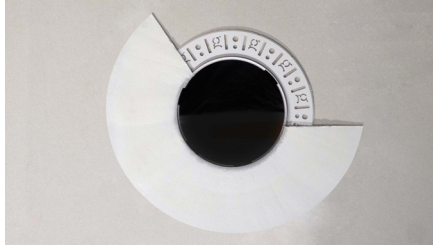
Flangeless Installation

Gotham's flangeless option utilizes a micro-thin polymer mud ring that minimizes the amount of drywall compound required to finish the ceiling. The end result is a virtually undetectable flangeless downlight installation.

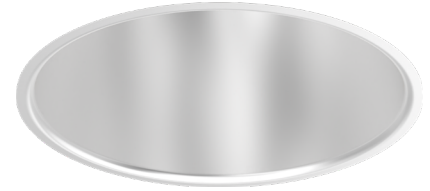
The polymer mud ring is installed independent of the of the recessed frame, therefore floating with the ceiling. This innovation minimizes any surface cracks during reflector installation, ceiling movement and any future service to the recessed frame, wiring, electronics, etc.



Partially finished mud ring, showing cross-section detail.



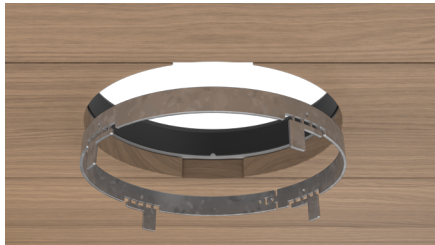
An IVO downlight requires only approximately 3" of plaster to finish.



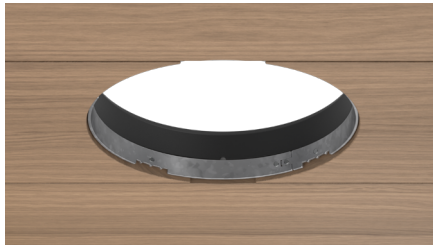
IVO with flangeless trim

Flangeless Millwork Installation

IVO's Flangeless in Millwork solution makes installation easy and precise. First, cut a hole in the Wood Ceiling using the Millwork Cutout Template (sold separately). Second, once Housing and ceiling are mounted in place, insert sheet metal Millwork Adapter (provided) lining up edge of tab with bottom of ceiling. Third, secure in place using finishing nails (provided) then remove tabs from Millwork Adapter. Last, install Trim!



Insert Millwork Adapter into precision-cut hole.



Secure with finishing nails.



Insert Trim and Module.

Dimming Configurations	Dimming Level		Control Input	Dimming Level	Driver Dim Curve	Recommended Control Dim Curve
	MIN10	+	ZT	100% to 10%	Linear	Linear/Logarithmic
		+	EZT	100% to 10%	Linear	Linear/Logarithmic
	MIN1	+	ZT	100% to 1%	Linear	Linear/Logarithmic
		+	EZT	100% to 1%	Linear	Linear/Logarithmic
		+	ELV	100% to 1%*	n/a	n/a
	DARK	+	EZT	100% to 0.1%	Logarithmic	Linear
		+	DMX	100% to 0.1%	Square	Linear
		+	DALI	100% to 0.1%	Logarithmic	Linear

* ELV Minimum Dimming level depends on dimmer and dimmer load

Embedded Nlight Configurations	Dimming Level		Control Input	Dimming Level	Control Provided	Driver Provided
	MIN10	+	NLIGHT	100% to 10%	NIO EZDXA	eldoLED EC0drive
		+	NLIGHTER	100% to 10%	NIO EZDCL ER	eldoLED EC0drive
		+	NLTAIR2	100% to 10%	RIO EZDL G2	eldoLED EC0drive
		+	NLTAIREM2	100% to 10%	RIO EZDL EM G2	eldoLED EC0drive
	MIN1	+	NLIGHT	100% to 1%	NIO EZDXA	eldoLED EC0drive
		+	NLIGHTER	100% to 1%	NIO EZDCL ER	eldoLED EC0drive
		+	NLTAIR2	100% to 1%	RIO EZDL G2	eldoLED EC0drive
		+	NLTAIREM2	100% to 1%	RIO EZDL EM G2	eldoLED EC0drive
	DARK	+	NLIGHT	100% to 0.1%	NIO EZDXA	eldoLED SOLOdrive
		+	NLIGHTER	100% to 0.1%	NIO EZDCL ER	eldoLED SOLOdrive
		+	NLTAIR2	100% to 0.1%	RIO EZDL G2	eldoLED SOLOdrive
		+	NLTAIREM2	100% to 0.1%	RIO EZDL EM G2	eldoLED SOLOdrive

How to Estimate Delivered Lumens in Emergency Mode

Delivered Lumens = 1.25 x P x LPW

P = Output Power/Wattage of Emergency Battery Driver (E7WR* = 7W, E10WR* = 10W, E15WR* = 15W)

LPW = Lumen per Watt rating of luminaire based on Ordering Code selections

Optical System

- Asymmetric Wall Wash distribution enables uniformity from floor to ceiling.
- Batwing distribution left-to-right widens beam coverage on the wall and reduces scalloping.
- Recommended for 1-to-1 wall to on-center spacing.

LED Light Engine

- Perfect Color™ consistency within ½-step MacAdam Ellipse using proprietary pick and place algorithm
- 90% lumen maintenance at 55,000 hours.
- Available in 80, 90, or 95 CRI. 90CRI has R9 greater than 50, 95 CRI has R9 greater than 80.

Trims

- Trims are field changeable via twist-lock (tool-free).
- Trims are available in 9 colors and 3 surface finishes (standard)
- Custom RAL and Paint colors available upon request.
- Wall Wash and Downlight Trims are designed to be interchangeable.

Electrical

- 120, 347, or Multi-Volt (MVOLT) 120-277 VAC input at 50/60 Hz
- Power Factor > 85%
- Input wires 18 AWG, 600V minimum, copper
- Fixtures are ROHS compliant

EMI/RFI

- EMI/RFI per FCC Title 47 CFR, Part 15, Class A rated standard.

Controls (Optional)

- Luminaire can be equipped with interface for nLight wired, allowing it to communicate over an nLight network. Couple with nLight-enabled sensors, power packs, or WallPods using CAT-5 cabling to create an nLight Control Zone. Link Control Zone to a Gateway directly or via a Bridge for remote status monitoring and control using SensorView software.
- Luminaire can be equipped with interface for nLight Air, allowing it to communicate over the wireless nLight control platform. Can be paired to other luminaires and wall switches through CLAIRITY+, a mobile app, which allows individual fixture control.

Dimming

- Luminaire is capable of continuous dimming without perceivable flicker (stroboscopic) as measured by flicker index (ANSI/IES RP-16-10).
- Available dimming ranges include: 100%-10% (MIN10), 100%-1% (MIN1), and 100%-0.1% (DARK) of rated lumen output.
- Available with smooth shut off function from minimum dimming level to 0%.
- EdoLED drivers (E2T, DALI) conform to IEEE P1789 standards.
- Drivers are inaudible in 24dB environment and stable even when input voltage conditions experience typical commercial environment fluctuations.

Emergency Battery (Optional)

- Luminaires equipped with battery pack (E7W, E10W, E15W) comply with NFPA 101 (Life Safety Code) and deliver constant light output for a duration of 90 minutes minimum with AC power loss.
- Emergency battery is CEC T20 compliant.

Installation

- Patent-pending Wire-Form Mounting Springs with custom profile facilitates effortless installation, maintains tension across various ceiling thicknesses, and ensures a snug-fit of the trim to the ceiling with no sag.
- Plug-in Driver design allows for quick and easy installation and servicing.
- Light Engine, Driver, Housing, and Trim can be installed tool-free.
- Ceiling Thickness Adapters available for 1.25" to 3" thick ceilings.

Construction

- Access to Light Engine, Driver, and branch circuit conductors is available from below the ceiling without the use of tools.
- Universal Mounting Butterfly Brackets can adjust vertically 2.5" and accept various mounting bars including ¾" and 1-1/2" C Channel, ½" or ¾" Flat Strap, ½" Conduit, and ½" Angle Bars, as well as standard Hanger Bars (included).
- Hanger Bars are extendable from 8.5" to 24".
- Luminaire is constructed with 20 gauge min cold-rolled steel, galvanized steel, and aluminum.

Listings

- Fixtures are CSA certified to meet US and Canadian standards.
- Fixtures are NOM certified to meet Mexican standards
- All fixtures are manufactured in strict accordance with the appropriate and current requirements of the "Standards for Safety" per UL.
- Wet Location standard, covered ceiling

Photometrics

- All photometry is conducted by IESNA standard LM-79-08 in an accredited lab.
- LEDs are tested to LM-80 standards. Lumen maintenance is calculated via TM-21.

Warranty

- 5-year limited warranty. This is the only warranty provided and no other statements in this specification sheet create any warranty of any kind. All other express and implied warranties are disclaimed. Complete warranty terms located at: www.acuitybrands.com/support/warranty/terms-and-conditions

Note:

- Actual performance may differ as a result of end-user environment and application.
- All values are design or typical values, measured under laboratory conditions at 25 °C.
- The product images shown are for illustration purposes only and may not be an exact representation of the product.

A+ Capable Luminaire

This item is an A+ capable luminaire, which has been designed and tested to provide consistent color appearance and out-of-the-box control capability with simple commissioning when used with Acuity Brands controls products.

All configurations of this luminaire are calibrated and tested to meet the Acuity Brands' specification for chromatic consistency - including color rendering, color fidelity and color temperature tolerance around standard CIE chromaticity coordinates.

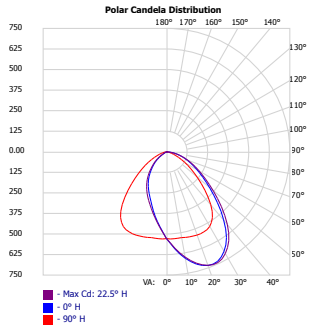
To learn more about A+, visit www.acuitybrands.com/aplus.

LW Lensed Wall Wash

IVO4SQ WW 20LM 35K 80CRI LW AR LSS

Wattage: 20.5, Lumens: 1291.5, LPW: 63, S/MH: 1.62, Test No: 24-833-1P151

PHOTOMETRY



Candela Summary	
0°	528
10°	658
20°	736
30°	699
40°	540
50°	345
60°	210
70°	119
80°	48
90°	0

Zonal Lumen Summary		
Zone	Lumens	%
0-30	441.8	34.2%
0-40	730.3	56.5%
0-60	1157.5	89.6%
0-90	1281.5	100.0%

Cone of Light			
Mounting Height	Initial FC Center Beam	Beam Diameter (ft)	
		Horizontal	Vertical
8'	8.25	17.1	9.6
10'	5.28	21.3	12
12'	3.67	25.6	14.4
14'	2.69	29.9	16.8
16'	2.06	34.1	19.2

CRI/CCT Multiplier Table		
CRI	CCT	Multiplier
80	2700K	0.92
	3000K	0.96
	3500K	1.00
	4000K	1.01
	5000K	1.04
90	2700K	0.80
	3000K	0.85
	3500K	0.85
	4000K	0.89
95	2700K	0.68
	3000K	0.75

Reflector Finish Multiplier		
Trim Color	Optical Finish	Multiplier
AR	LSS	1.00
AR	LS	1.06
AR	LD	0.97
GR	LSS	0.97
GR	LS	0.98
GR	LD	0.92
PR	LSS	0.97
PR	LS	0.97
PR	LD	0.90
BR	LSS	0.68
BR	LS	0.68
BR	LD	0.68
WTR	LSS	0.87
WTR	LS	0.89
WTR	LD	0.87
WR		1.03
WMR		1.03
WRAMF		1.04
BZR		0.68

see xxx@acuitybrands.com for more IES files



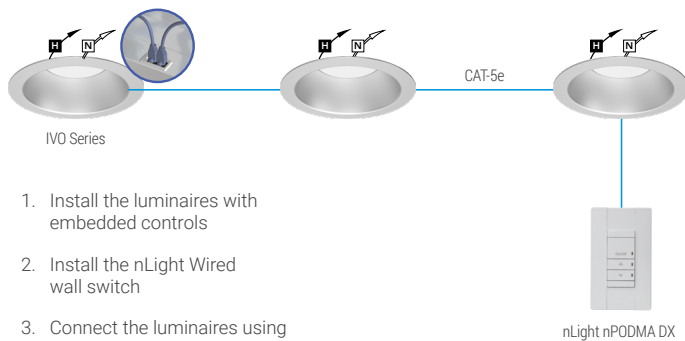
Single Lighting Controls Platform for Indoor & Outdoor Spaces

nLight® is your networked lighting controls platform, for indoor and outdoor applications, providing wired or wireless options. Scaling from room to campus-wide applications, it is the one platform that grows with your business today and tomorrow; to seamlessly address energy cost optimization, building code compliance, improved occupant comfort, and much more. nLight also interfaces with DALI®, BACnet®, DMX and additional third-party devices.

nLightcontrols.com

nLIGHT

Wired Embedded Controls



1. Install the luminaires with embedded controls
2. Install the nLight Wired wall switch
3. Connect the luminaires using standard CAT-5e cables and the controls devices will automatically discover each other and work (plug and play)

Wireless Embedded Controls



1. Install the luminaires with embedded controls
2. Install the nLight AIR battery-powered wall switch
3. Use CLAIRITY+ mobile app to pair the fixtures with the wall switch and if desired, customize the sensor settings

UL924 Sequence of Operation

The below information applies to all nLight AIR devices with an EM option.

- EM devices will remain at their high-end trim and ignore wireless lighting control commands, unless a normal-power-sensed (NPS) broadcast is received at least every 8 seconds.
- Using the CLAIRITY+ mobile app, EM devices must be associated with a group that includes a normal power sensing device to receive NPS broadcasts.
- Only non-emergency rPP20, rLSXR, rSBOR, rSDGR, and nLight AIR luminaires with version 3.4 or later firmware can provide normal power sensing for EM devices. See specification sheets for control devices and luminaires for more information on options that support normal power sensing.

