



PRIM™

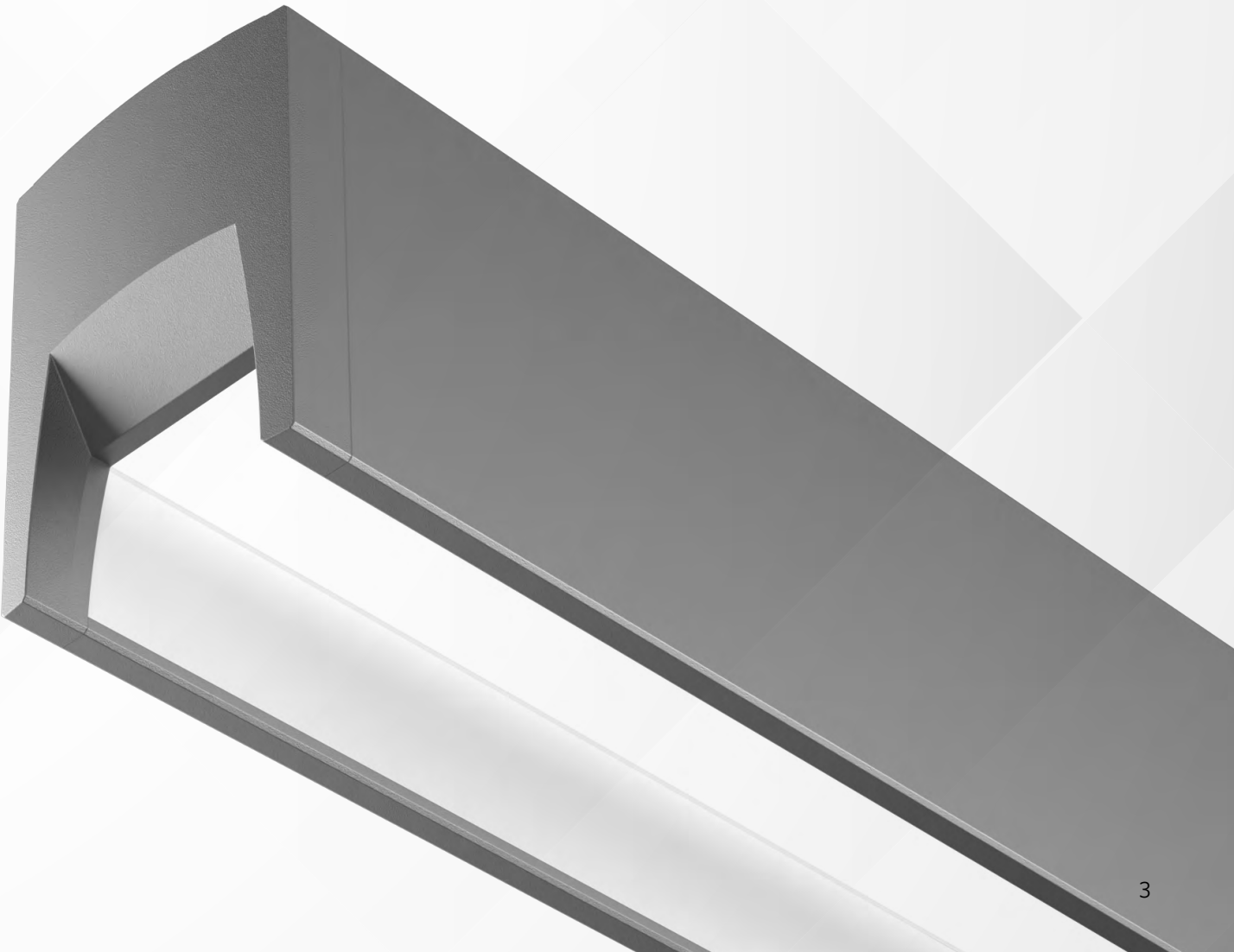
Peerless®



Poise. Purpose. PRIM.

Striking a balance between what a luminaire should do and how it should feel, Prim holds sacred the idea that a space should have a continuous flow uninterrupted by intrusive light, and that occupants should benefit from comfortable, glare-free light whose source remains discreet. Prim's all-around seamless design and array of options maintains the continuity of a space, generating harmony across the entire lighting application.

This blend of human-centric illumination and design intentionality elevates Prim to be the peak of linear lighting solutions.



It's in the Details

Seamless for Harmony

Seamless lens, seamless top, seamless install aesthetic

Quiet by Design

Minimized high-angle glare with top-down flash

Preserve the Flow

A variety of trim, endcap, and color options

Fast Link

All-in-one patent-pending electromechanical connection

Max Latitude

+/-12-inch adjustable mounting bridges

Elevate Your Control

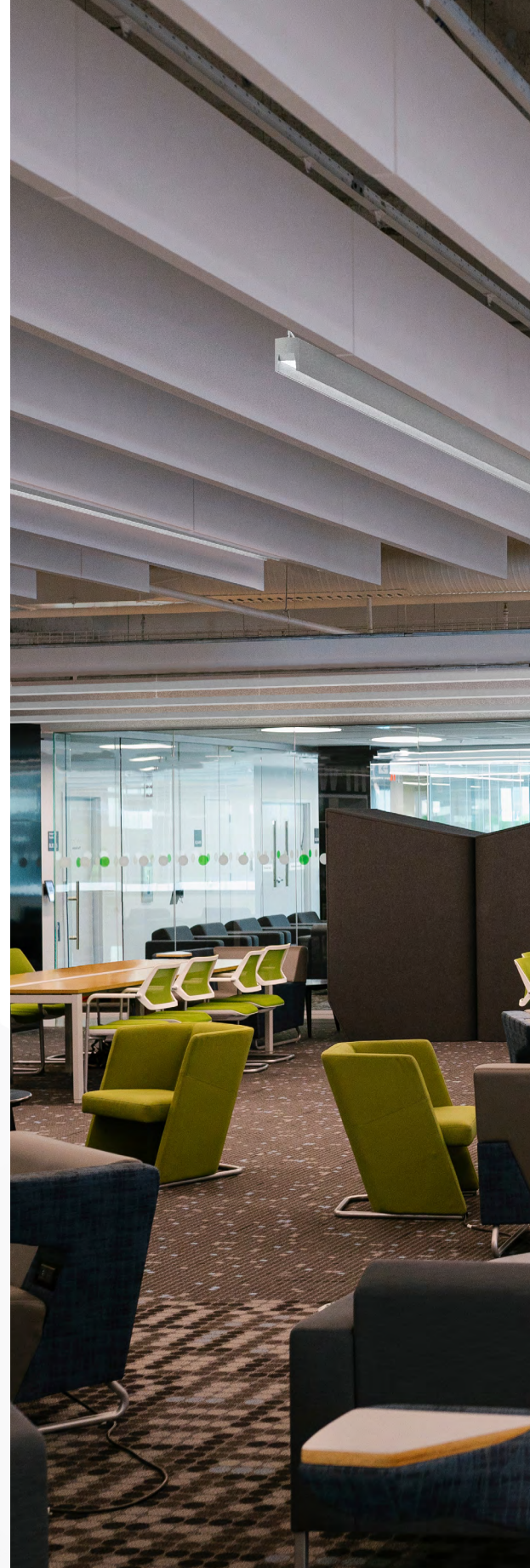
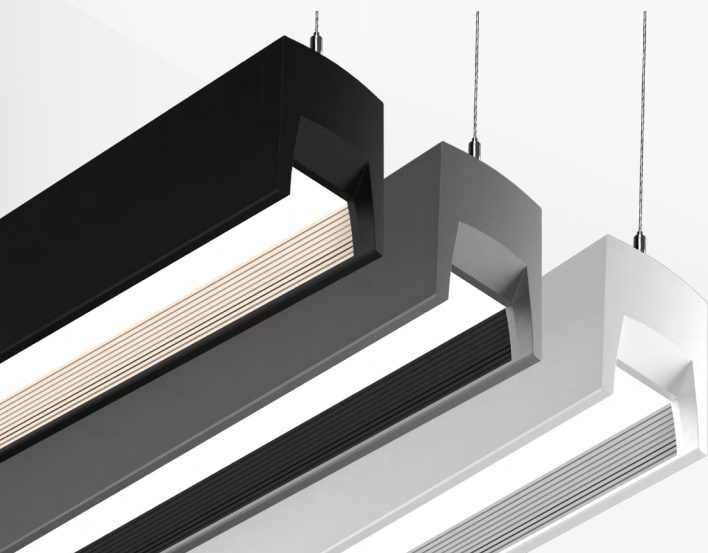
Integral driver or Modulus™ power and control options

Depth of View

Recessed lens creating a 50-degree cutoff to quiet ceilings

Enhance the Tone

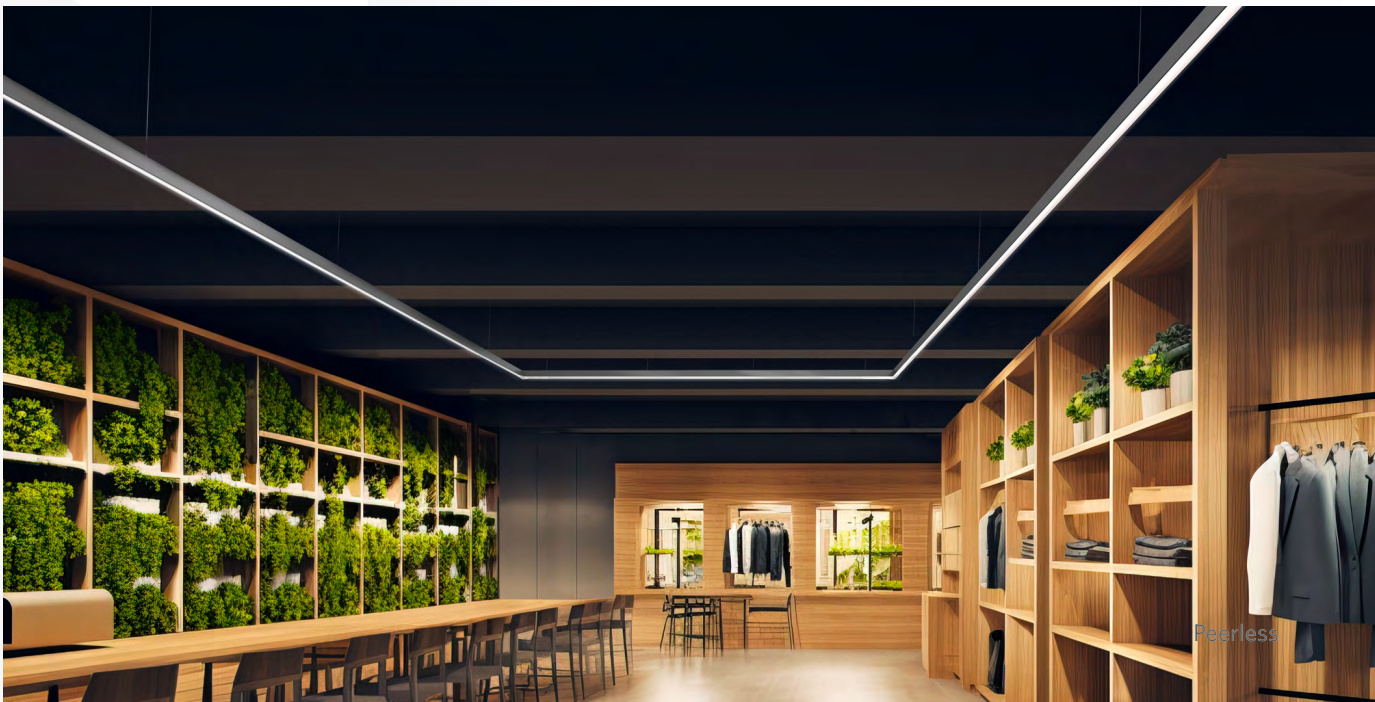
Painted and anodized colored trim options

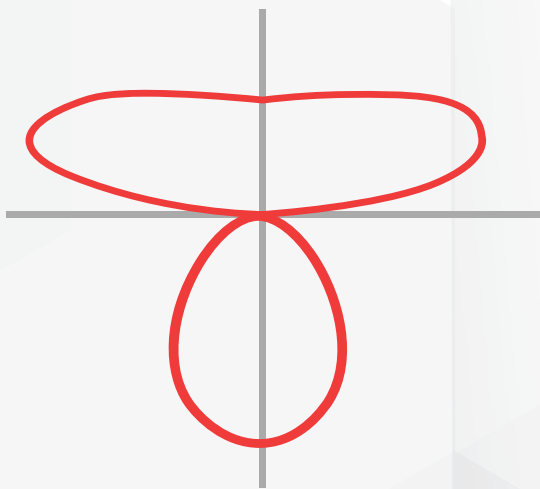
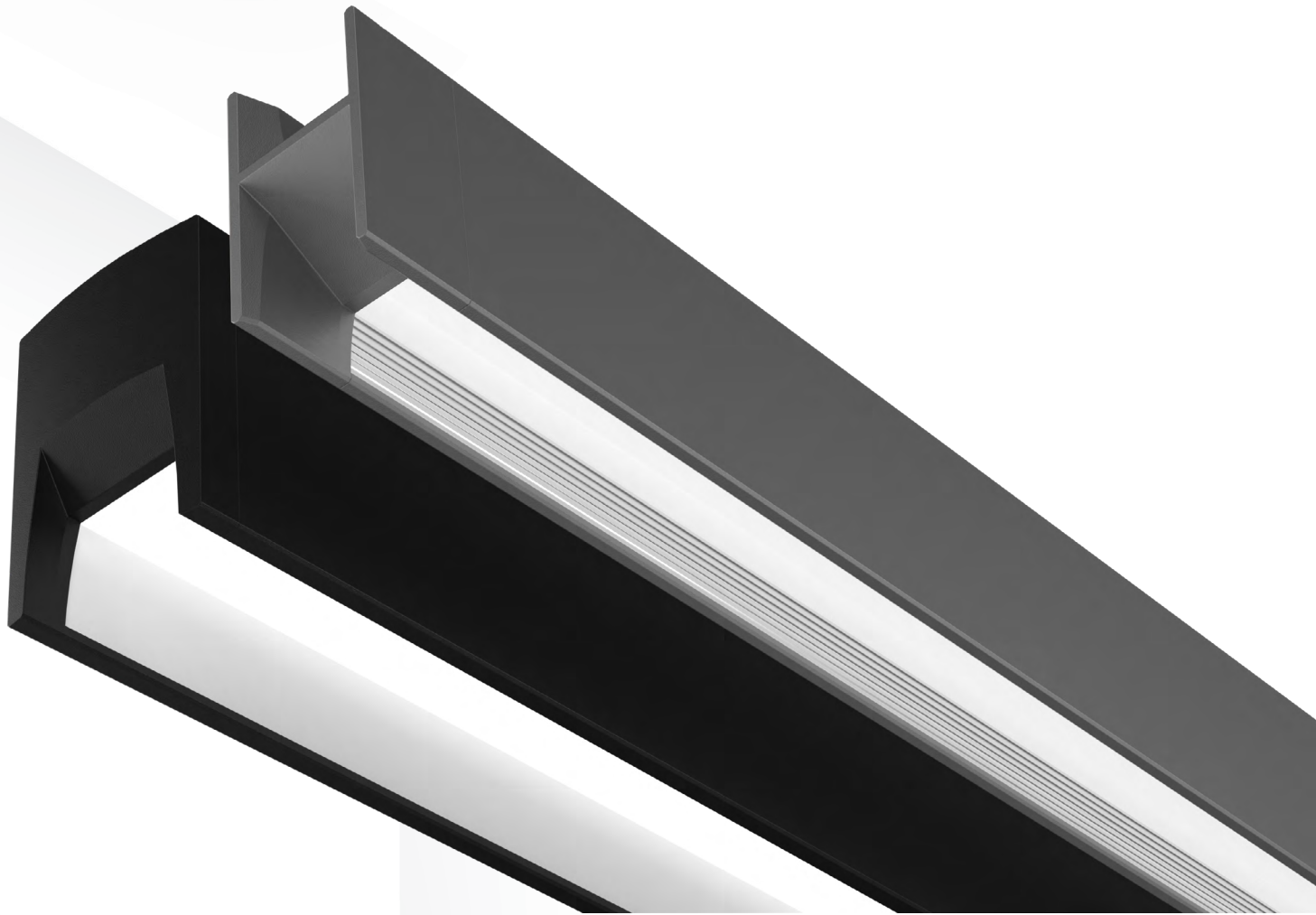




Seamless for Harmony

With a clean minimalist look for both recessed and pendant mounts, Prim blends in. Flanged options create long unbroken lines while the flangeless model is mudded in for the ultimate in seamlessness. Finished tops round out the smooth effect when seen from above.





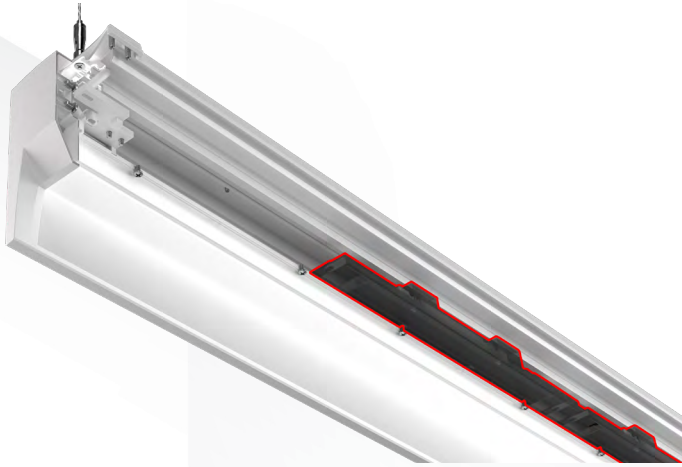
Quiet by Design

With thoughtful, purposeful intent, the components of a traditional downlight have been re-engineered to derive even greater value from this next generation linear fixture. Designed to minimize high-angle glare, by using top-down flash methodology, Prim delivers softened illumination that will not disrupt or break the flow of a space.

Preserve the Flow

Reflective trims are field-interchangeable and come in ribbed or smooth textures and a host of colors. That, plus a choice of square or sculpted endcaps keep the visual flow consistent throughout the space, especially when matching earlier installations.

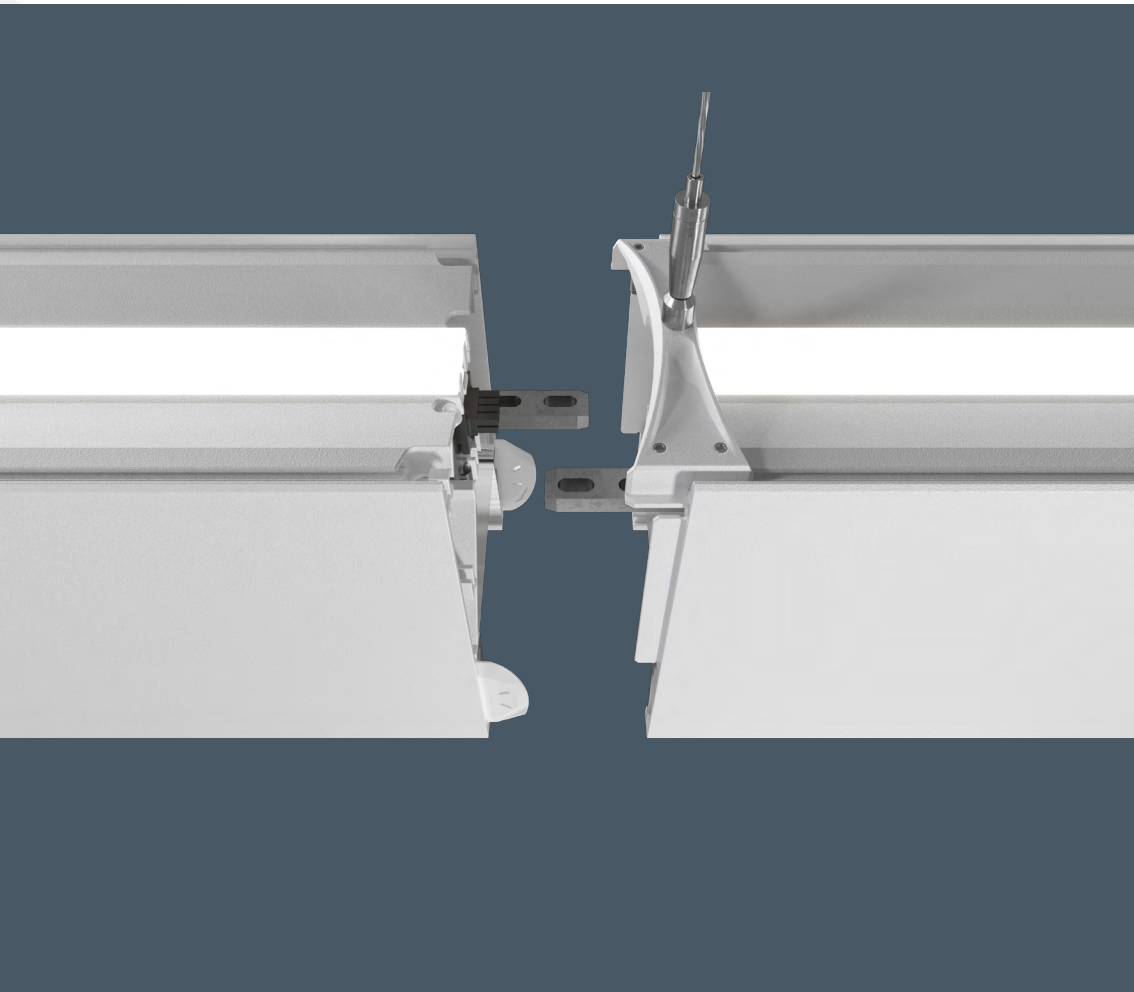




Elevate Your Control

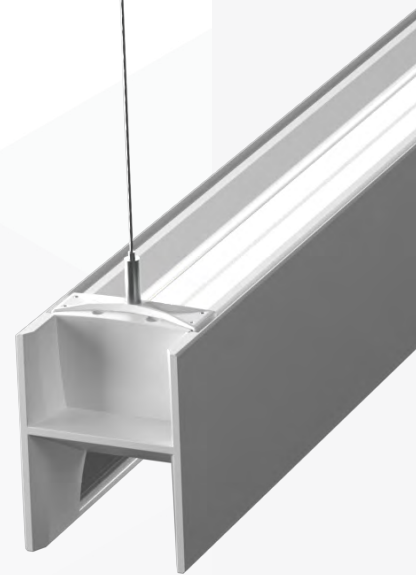
Prim is available with integral drivers and emergency options for standard, everyday jobs. Modulus* technology is also offered for projects that require maximum controllability. Modulus* is a low voltage distributed power and control system for providing digital control and networked technologies for LED luminaires. Tunable White lighting can be used for a variety of reasons and the digital architecture behind Prim makes it easier to specify and install. With two ranges available (Productivity Range | 3000k-5000k or Rhythm Range | 2700k-6500k), dynamic white lighting can easily support the needs of the space in which it is installed.





Fast Link

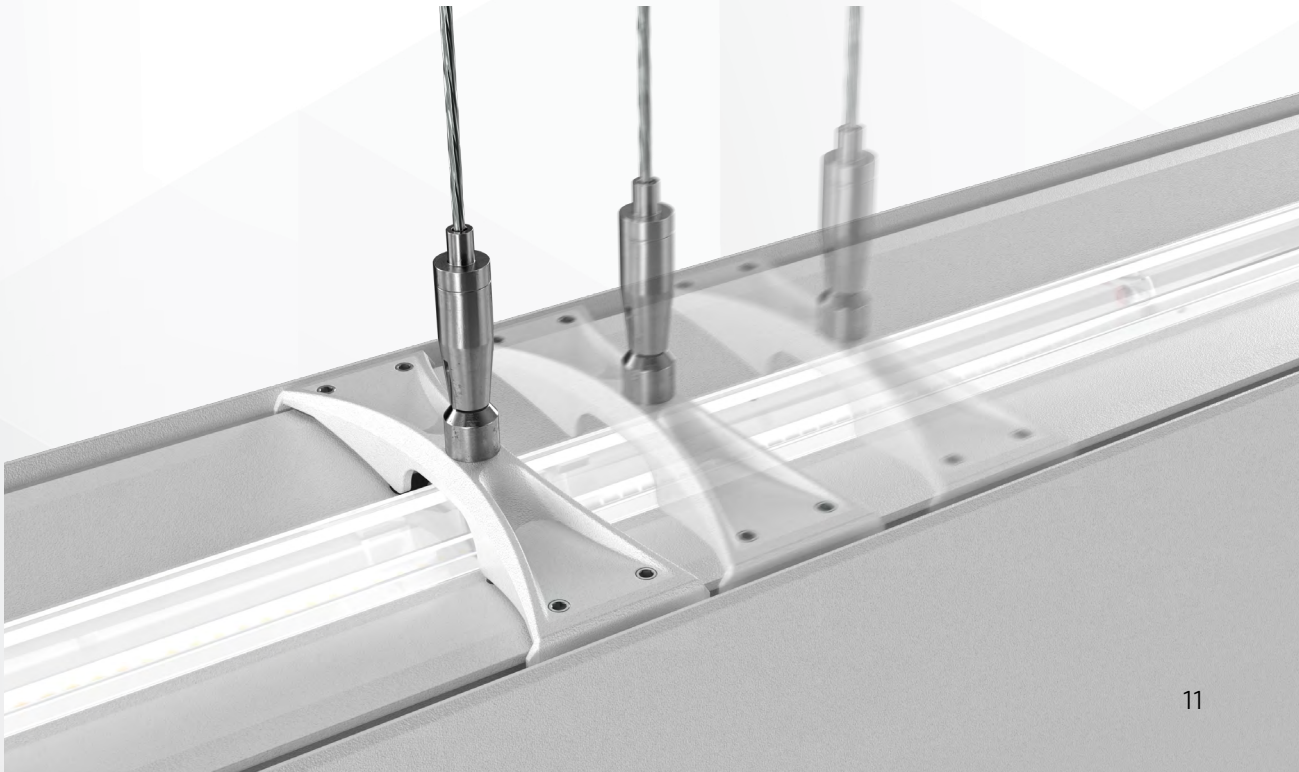
A hassle-free, patent-pending electromechanical union combines both operations with one quick, secure link. This innovation eliminates wiring concerns and speeds up installation allowing contractors to be quicker on and off the job.





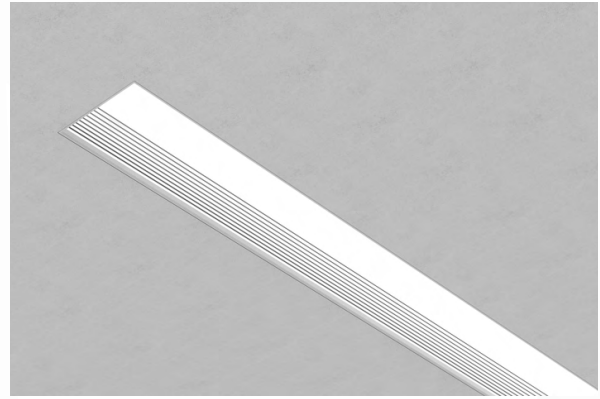
Max Latitude

Install-friendly mounting bridges are self-balancing and adjust +/- 12" to easily work around ducts and other obstructions, delivering substantial time savings and flexibility for contractors on the jobsite.



Depth of View

Prim recessed aims to create quiet lines in spaces with its recessed lens 2" and 4" apertures. This changes the field of view from traditional linears and creates more of a linear downlight appeal for the designer. Our apertures are truly recessed, creating a 50-degree cutoff helping to make ceilings quieter while maximizing the visual comfort for the occupants through the entire space.



Enhance the Tone

Prim offers painted and anodized colored trim options. The matte white offers maximum output and efficacy, while the matte black is designed to completely quiet the reflectance on the trim. The anodized colors offer the designer a host of different choices that can be used to accent a color scheme, or to create a more natural feel, by complimenting natural earth tones in spaces. Prim trims are available in painted matte (white / black), anodized (brushed / gold / pewter / wheat / black), or custom colors are available as well.

*Prim™ standard trim colors match Gotham® trim colors





Poise.
Purpose.
PRIMTM

Designed for You

Prim is available in 2" and 4" sizes with pendant or recessed mounting options and is beautifully fit for commercial office, education, retail and multi-use spaces.

Peerless[®]



Learn more about Prim