

TIERRA

IGF6 RGBW/RGBA

6" LED Color Changing In-Grade Fixture

HIGHLIGHTS

- Patented "Flow-Thru" technology, featuring independently encapsulated LED module and Driver module
- Mechanical tilt of 0°, 5°, or 10°
- Modular Design to facilitate easy of installation, driver replacement, and light source updates as technology advances
- UV Stabilized, impact and corrosion resistant materials for the roughest operating environments
- Optimal beam control with seven unique distributions
- Available in RGBW3 (3000K), RGBW4 (4000K) and RGBA (amber)
- Quad-Tech enabled for optimal color mixing under each optic. Prevents striations and color separation in wall grazing or washing applications
- Superior performance with up to 1,100 delivered lumens and a max CBCP of 3,950

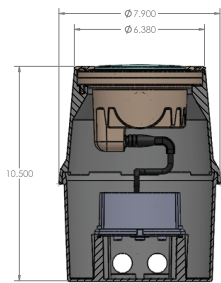
5
YEAR
warranty


IP68

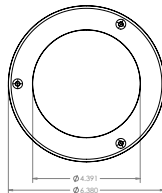


Specifications	Aluminum, Brass or Stainless Steel	Stainless Steel and Brass Wide Trim
Diameter:	6.38"	7.38"
	162 mm	187 mm
Height:	10.50"	10.50"
	266 mm	266 mm
Weight:	17.35LBS.	17.41LBS.

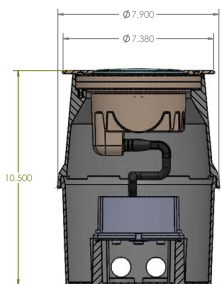
DIMENSIONS



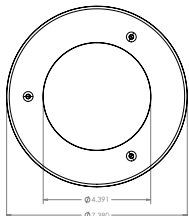
Aluminum, Brass or Stainless Steel



Aluminum, Brass or Stainless Steel

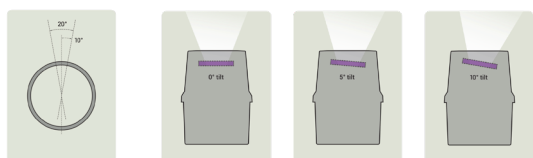


Stainless Steel Wide Trim or Brass Wide Trim



Stainless Steel Trim or Brass Trim

AIMING DETAILS


 AIMING ADJUSTMENT
0° to 20° HORIZONTAL

0° TILT

5° TILT

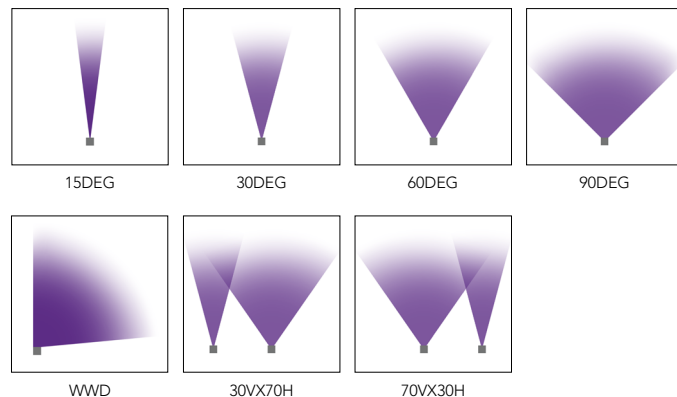
10° TILT

PERFORMANCE SUMMARY

	15DEG	30DEG	60DEG	90DEG	WWD	30VX70H	70VX30H
Max Delivered Lumens	1,082	1,075	1,078	1,040	991	1,050	1,063
Watts	24.45	24.45	24.45	24.45	24.45	24.45	24.45
LPW	44	44	44	43	41	43	43
Max Candela	3,950	2,186	1,053	484	1,351	1,569	1,548

Note: Information based on all colors full on RGBW4

STANDARD DISTRIBUTION



15DEG

30DEG

60DEG

90DEG

WWD

30VX70H

70VX30H

ORDERING INFORMATION
EXAMPLE: IGF6 BR LED P1 RGBW4 MVOLT 15DEG 0T FLC 34B DMX

Model*		Door Material*		Source*		Performance Package*	LED Dynamic Range*		Voltage*		Distribution*	
IGF6	In-Grade Fixture 6"	A	Aluminum	LED	LED	P1	RGBW4	40K White	MVOLT	120-277 Volt 50/60HZ	15DEG	15°
		BR	Brass				RGBW3	30K White			30DEG	30°
		SS	Stainless Steel				RGBA	Red, Green, Blue, Amber Limited Wavelength			60DEG	60°
		SST	Stainless Steel Wide Trim								90DEG	90°
		BST	Brass Wide Trim								WWD	Wall Wash Distribution
						30VX70H	30° x 70°					
						70VX30H	70° x 30°					

Tilt*	Lens*	Conduit Entries*		Control Input*	Finish			
0T	0° Tilt	FLC	Flat Lens Clear	34B	3/4" NPT Bottom (includes 4 3/4" bottom and 4 3/4" side two on each side 180° apart)	DMX	BL	Black
5T	5° Tilt						34S	3/4" NPT Side (includes 4 3/4" side, two on each side 180° apart)
10T	10° Tilt	FLCSR	Slip Resistant Lens	BRS	Bronze Smooth			
				BRT	Bronze Textured			
				DBL	Black Smooth			
				DDB	Designer Bronze			
				DNA	Natural Aluminum			
				NBS	Natural Bronze Smooth			
				SND	Sand			
				WH	White			
				_Z	Zinc Undercoat (i.e.BLZ)			

Note: Zinc Undercoat provides corrosion protection for Marine Environment and Natatorium Construction
 Note: Finish is only available with A (aluminum) Material

Note: * is a required field

ELECTRICAL LOAD

Light Engines	System Watts	Input Current (A)			
		120	208	240	277
P1	24.45	0.204	0.118	0.102	0.088

PERFORMANCE DATA

LUMEN OUTPUT – IGF6

Lumen values are from photometric tests performed in accordance with IESNA LM-79-08. Data is considered to be representative of the configurations shown, within the tolerances allowed by Lighting Facts. Actual performance may differ as a result of end-user environment and application. Contact factory for performance data on any configurations not shown here.

Performance Package	System Watts	Distribution Type	Field Angle		Beam Angle		RGBW3			RGBW4			RGBA		
			°H	°V	°H	°V	Max CD	Lumens	LPW	Max CD	Lumens	LPW	Max CD	Lumens	LPW
P1	24.45	15DEG	48	48	22	22	3,585	985	40	3,950	1,082	44	3,319	912	37
		30DEG	68	68	33	33	1,984	976	40	2,186	1,075	44	1,837	904	37
		60DEG	104	104	54	54	955	979	40	1,053	1,078	44	885	906	37
		90DEG	139	139	93	93	440	944	39	484	1,040	43	407	874	36
		WWD	95	97	37	36	1,226	899	37	1,351	991	41	1,135	833	34
		30VX70H	109	62	65	24	1,424	953	39	1,569	1,050	43	1,318	882	36
		70VX30H	62	109	24	66	1,405	965	39	1,548	1,063	43	1,301	893	37

ACCESSORIES

DOOR MATERIAL



ALUMINUM DOOR

Aluminum die cast material, alloy 380 with clear coat standard.
Available with optional painted finish



BRASS DOOR

Brushed, corrosion resistant, alloy 385 brass material



STAINLESS STEEL DOOR

Brushed, corrosion resistant, alloy 304 stainless steel material

ACCESSORY OPTIONS

TAKE CONTROL

Hydrel lighting solutions bring ease of use, innovation, and next-generation control features to commercial, underwater, and architectural outdoor applications. We offer a dedicated team of specification engineers to take you through lighting design, the specification process, to the installation of our fixtures. We simplify the complex and help you create the right layer of light for any outdoor lighting environment. Find the right architectural outdoor fixture, controls, and network connectivity with Hydrel Lighting Solutions.

FRESCO CONTROL SYSTEM

FCS	Fresco Control System	7TSN	7" touchscreen with nLight port	X	DMX/RMD control	DBL	Black
						DWH	White
						DNA	Natural Aluminum

Refer to [FRESCO](#) spec sheet for additional details and options.



EASYL - LED SHOW CONTROLLER WITH LCD TOUCHSCREEN (INTETRAL POWER SUPPLY)

EZSOLO	Easyl Solo	MVOLT	120V-277V VAC, 50/60Hz	BK	Black
EZTOUCH	Easyl Touch			Wh	White
EZPRO	Easyl Pro				

Refer to [EASYL](#) spec sheet for additional details and options.



PATHWAY Connectivity Solutions - DMX lighting and networking with scalable networks



DMX512 networks create dynamic lighting. Dynamic lighting often brings a lot of color and movement to spaces. The DMX512 lighting protocol was created to serve the needs of performance lighting, such as in theaters or music venues. A DMX network is designed to support large amounts of data continually moving between controllers and luminaires, and at very high speeds. Many non-performance lighting applications also rely on DMX networks, to support RGB LED luminaires featured in applications such as building façades, hotel lobbies and corporate reception areas.

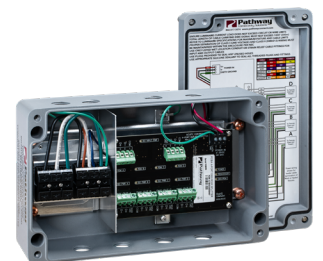
A DMX network always includes a controller and luminaires that are compatible with the DMX protocol. As well, DMX lighting systems must include network devices that route the DMX data to different locations between the controllers and luminaires.

[Pathway Connectivity](#) provides these network devices, creating robust and secure network backbones. Pathway devices create bridges between Ethernet and DMX, and DMX and other kinds of lighting control protocols, such as RDM, nLight® or 0-10v.

DMX-RDM REPEATER WITH POWER IN IP65 ENCLOSURE

PWREP IP65 P4 TERM RDM	DMX-RDM Repeater with Power in IP65 Enclosure
-------------------------------	---

Refer to [PWREP IP65](#) spec sheet for additional details.



SPECIFICATIONS AND FEATURES

INTENDED USE: The IGF6 LED Ingrade Series is intended to provide years of trouble free operation for even the most severe direct burial applications. It utilizes the Hydrel proprietary "Flow-Thru" modular design to provide superior water ingress protection, fast and simple installation, and easy replace LED and driver modules if needed in future years for both maintenance and product efficiency gains. This product is ideal for all uplighting applications up to 1,100 lumens where a small footprint ingrade is desired.

DOOR MATERIAL: Aluminum Door: Aluminum die cast material, alloy 380 with clear coat standard. Available with optional painted finish. Brass Door: Brushed, corrosion resistant, alloy 385 brass material. Stainless Steel Door: Brushed, corrosion resistant, alloy 304 stainless steel material.

ROUGH-IN SECTION: The robust polymer Rough-In section is molded from a U.V. stabilized material that is both impact and corrosion resistant for all types of environments. The rough-in utilizes a integral junction box to support easy access and initial installation.

CONDUIT ENTRIES: 34B 3/4" NPT Bottom (includes 4 3/4" bottom and 4 3/4" side, two on each side 180° apart) 34S 3/4" NPT Side (includes 4 3/4" side, two on each side 180°)

FINISHING SECTION: The finishing section includes a standard die cast aluminum face plate with a corrosion resistant finish. Upgraded face plates are available in highly corrosion resistant stainless steel and brass with brushed finishes. Oversized trim face plate to trim out the finished installation hole for tile and other surface materials.

LED MODULE: The LED module utilizes a highly corrosive resistant die cast brass housing. The module accomplishes a dual purpose of water ingress and thermal management to protect the critical LED components and ensure years of serviceable life. Double sealed from the environment utilizing a proprietary encapsulation process. a moisture blocking fitting and silicone seals are trademark to Hydrel quality.

LIGHT ENGINE: The light engine includes the latest in quad chip LED technology to ensure the best blending of colors under the optic, eliminating any striations or color separation typically seen in near field illumination when discreet RGBW chips are used. These LEDs are coupled with a precision optic and light shaping films to provide the most efficient beams delivering light onto the intended surface.

OPTICS: 15DEG, 30DEG, 60DEG, 90DEG Wall Wash, 30VX70H and 70VX30H

LENS: Tempered Borosilicate Glass

POWER MODULE: The LED driver is fully encapsulated within the the junction box cover housing allowing for lower profile luminaire. The thermally conductive epoxy material provides not only superior thermal dissipation of the driver for optimum operation but also the highest level of water ingress protection for this critical component.

VOLTAGE: MVOLT 120-277 volt 50/60HZ.

CONTROL: DMX512. Color control is achieved through standard DMX512 hardware, at a maximum of 44 frames per second. All channels have logarithmic power for finer color and intensity control. Compatible with the EasyL and Fresco controllers from Acuity. Controllers must be ordered separately.

LISTING: cCSAus, suitable for wet locations, laboratory tests conducted by CSA to UL Standard UL-1598 and UL-8750

GOVERNMENT PROCUREMENT:

BAA – Buy America(n) Act: Product qualifies as a domestic end product under the Buy American Act as implemented in the FAR and DFARS. Product also qualifies as manufactured in the United States under DOT Buy America regulations.

BABA – Build America Buy America: Product qualifies as produced in the United States under the definitions of the Build America, Buy America Act.

Please refer to www.acuitybrands.com/resources/buy-american for additional information.

WARRANTY: 5-year limited warranty. This is the only warranty provided and no other statements in this specification sheet create any warranty of any kind. All other express and implied warranties are disclaimed. Complete warranty terms located at: www.acuitybrands.com/support/warranty/terms-and-conditions

Consult factory for details.

NOTE: Actual performance may differ as a result of end-user environment and application. All values are design or typical values, measured under laboratory conditions at 25 °C. Specifications subject to change without notice.