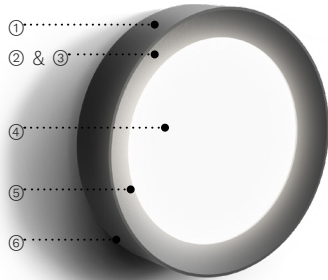
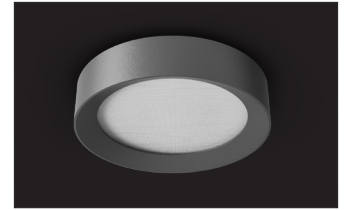


PROJECT NAME: \_\_\_\_\_ QUANTITY: \_\_\_\_\_ TYPE: \_\_\_\_\_

ORDERING CODE: \_\_\_\_\_



- ① Corrosion resistant diecast aluminum housing.
- ② Integrated standard 0-10V driver.
- ③ Light guide LED technology for uniform lambertian light distribution.
- ④ Impact resistant patterned tempered glass.
- ⑤ Sealed enclosure with durable gaskets.
- ⑥ All hardware in stainless steel.



SN800C



SN800



## MATERIALS

Scena is made of aluminum diecast offering exceptional precision and durability. The main housing is perfectly sealed with durable gaskets. The integrated LED light module and 0-10V driver are protected by a patterned tempered glass. With a distinctive look and perceptible quality, Scena is designed for uniform lighting performance.

## ELECTRICAL DRIVER

Standard driver is 0-10V dimming-ready (min. dim 5% / dim-to-off)\* with: 120-277 multivolt compatibility, operating temperature range of -40°C/-40°F to 85°C/185°F\*, over current and output short circuit protection.

## LED LIGHT ENGINE

Offered in 2700K, 3000K, 3500K & 4000K / 80CRI.  
 70% LED lumen maintenance at 60,000 hours (L70/B50) based on IESNA LM-80-08 LED extrapolated life, calculated per IESNA TM-21-21.

## FINISH

Five-stage preparation process includes preheating of cast aluminum parts for air extraction. Polyester powder coating is applied through an electrostatic process, and oven cured for long term finish.

## CERTIFICATION

UL certified to Canadian and U.S. safety standards. Certified for use in wet locations. Rated IP65 / IK10. Photometric testing performed by an independent laboratory in accordance with IES LM-79-08 standards at 25°C. Actual performance may differ as a result of end-user environment and application.

## WARRANTY

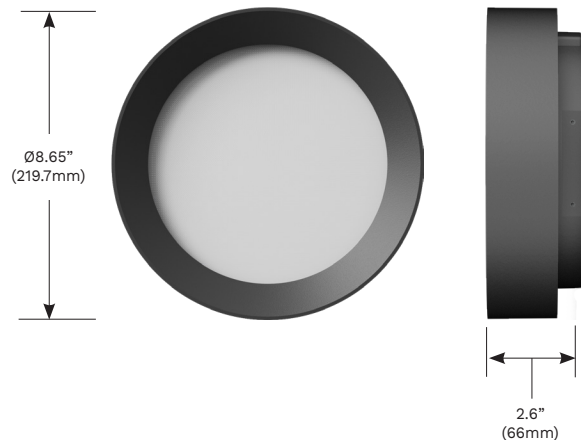
5-year limited warranty. This is the only warranty provided and no other statements in this specification sheet create any warranty of any kind. All other express and implied warranties are disclaimed. Complete warranty terms located at: <https://www.luminis.com/technical/warranty/>

## MOUNTING

The mounting plate is designed to fit on a 4" (102mm) octagonal electrical box using 3.5" (89mm) C/C mounting holes. Fixture must be installed on a wall or a finished ceiling for exterior applications and/or when exposed to inclement weather.

## MEASUREMENTS

Maximum weight: 3.8 lbs (1.7 kg)




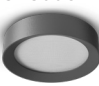
\* L1L23 light output dims to min. 1% / dim-to-off and has an operating temperature of -20°C/-4°F to 50°C/122°F

## LUMINIS.COM

Toll free: (866) 586-4647 | Fax: (514) 683-8872 | Email: [info@luminis.com](mailto:info@luminis.com)  
 260 Labrosse, Pointe-Claire (QC) Canada H9R 5L5

SN800/SN800C  
 Rev. 02/20/24

ORDERING CODE

*SERIES	*LIGHT OUTPUT	*CCT	*VOLTAGE	CONDUIT COVER
<b>SN800</b>  <b>SN800C</b> 	<b>L1L11</b> 1189 lm / 14w <b>L1L23</b> 2306 lm / 29w  Delivered lumens calculated at 4000K/80CRI. Typical power consumption. Refer to LCF table for outputs at other CCTs.	<b>27K</b> 2700K <b>30K</b> 3000K <b>35K</b> 3500K <b>40K</b> 4000K	<b>120</b> 120V <b>277</b> 277V <b>MVOLT</b> 120V-277V	<b>SWK</b> Decorative cover for 3/4" conduit junction box

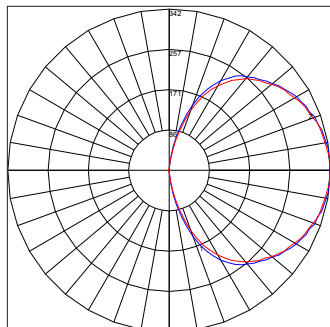
PHOTOCELL	LOUVERS	*FINISH	ENVIRONMENT
<b>PH</b> Photocell	<b>CB</b> Cross blade louvers	<b>BKT</b> Jet black <b>BZT</b> Bronze <b>CHT</b> Champagne <b>DGT</b> Gun metal <b>GRT</b> Titanium gray <b>MST</b> Matte silver <b>SGT</b> Steel gray <b>WHT</b> Snow white  <b>CMC</b> Custom matched color <sup>1</sup> <b>RAL</b> RAL color <sup>2</sup>	<b>MG</b> Marine grade paint <sup>3</sup> <b>NT</b> Natatorium suitable <sup>4</sup>

NOTES

- \*- Denotes a required field
- 1- Contact factory to coordinate custom matching color.
- 2- Specify RAL number.
- 3- Marine grade paint for harsh, coastal environment and exposure to salt water. Additional delay required.
- 4- Available only in WHT and BKT.

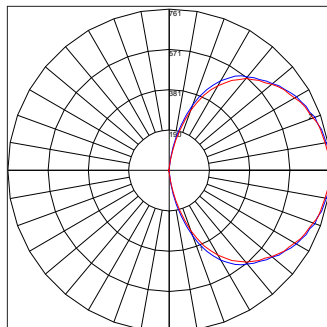
TYPICAL PHOTOMETRY SUMMARY

SN800-L1L11



**Total Lms:** 1189 Lumens  
**Total Input Watts:** 14 W  
**Efficacy:** 85 Lumens/Watt  
**CCT/CRI:** 4000K/80  
**Maximum Candela:** 342.45 @  
 0°H/92.5°V  
**BUG Rating:** B0-U3-G2

SN800-L1L23



**Total Lms:** 2306 Lumens  
**Total Input Watts:** 29 W  
**Efficacy:** 79.5 Lumens/Watt  
**CCT/CRI:** 4000K/80  
**Maximum Candela:** 761 @  
 0°H/92.5°V  
**BUG Rating:** B0-U5-G3

LUMEN CONVERSION FACTOR  
 (LCF)

CCT	CRI	LCF
2700K	80	0.92
3000K	80	0.94
3500K	80	0.98
4000K	80	1.00

All Photometry shown use the 80CRI 4000K LEDs.  
 Please visit our web site [www.luminis.com](http://www.luminis.com) for complete I.E.S. file.

LUMINIS.COM

Toll free: (866) 586-4647 | Fax: (514) 683-8872 | Email: [info@luminis.com](mailto:info@luminis.com)  
 260 Labrosse, Pointe-Claire (QC) Canada H9R 5L5

## OPTION DETAILS

