



# TRAC-MASTER®

Project: \_\_\_\_\_

Fixture Type: \_\_\_\_\_

Location: \_\_\_\_\_

Contact/Phone: \_\_\_\_\_

Avant Garde  
**CYLINDRA™ 15W LED**  
**T254L G2**



## PRODUCT DESCRIPTION

The Cylindra™ 15W LED approximates the light output and distribution of 90W PAR30 halogen lamps in a PAR30 size fixture, utilizing approximately 1/6 of the energy and having a rated life of 50,000 hours. Available in 2700K, 3000K, 3500K and 4000K color temperatures with a minimum 80 CRI. Optional high CRI versions are available with a minimum 90 CRI and R9 greater than 50. There are also optional SpectralWhite color/white enhancing versions which offer minimum 90 CRI while rendering colors richly and making whites appear naturally brilliant. The contemporary styling of the Cylindra LED enables it to subtly enhance practically any decor without diverting attention from the surrounding environment. Soft curved surfaces combine with clean, crisp edges to provide a uniquely attractive aesthetic. Cylindra's integral, bayonet-mounted accessory holder accommodates up to two accessories if desired.



## Cylindra 15W LED

**Construction** Die cast aluminum housing provides outstanding thermal management of LED, yielding 70% average lumen maintenance at 50,000 hours of operation • Fashionable, elegant design complements any decor • Available in white, black and silver painted finishes.

**LED** High performance LED array provides outstanding reliability, performance and color quality/ consistency • 2700K, 3000K, 3500K or 4000K white phosphor high performance LEDs • Chromaticity range within a 3-step MacAdam Ellipse • 80 CRI minimum on standard product • Optional high CRI versions offer 90 CRI minimum • Optional SpectralWhite color/white enhancing versions are available which make whites appear naturally brilliant and render colors more richly.

**Driver** Concealed in rear housing to minimize overall fixture footprint • Provides quiet operation with or without dimming • Dimmable using high quality, factory-approved reverse phase ELV dimmers – see [T254LG2-DIM](#) • Solid state electronic, Class 2 compliant • Integral overcurrent and short circuit protection • Designed for greater than 50,000 hour operating life • FCC Certified to Part 15 Class B EMI standards.

**Optics** Interchangeable computer-designed custom faceted reflectors available in three factory configured beam spreads • One reflector provided with fixture (as specified in catalog number) • Accessory reflectors available to enable beam changes in the field • Beam patterns can be altered as desired using a variety of available light control accessories.

**Juno Universal Track Adapter** Universally compatible with both Trac-Master 1-circuit or 2-circuit track, Trac-Lites track, monopoints and special mountings • Also UL Recognized for use on ConTech® LT Series track • Copper alloy contacts provide precise spring action - no arcing and will not take a set • True, positive electrical ground • On/off switch included • Patented embossed polarity arrows on bottom of adapter • Spring-loaded positive latch with embossed polarity arrows secures track fixture to track • Two-position power contact provided for two-circuit application.

**Alternate TEK Track Adapter** Compatible with Juno TEK track system • System specific and assembled to track fixture • Integrally polarized construction to prevent reverse installation – only allows insertion in proper orientation • Rotary circuit selector enables simple switching between circuits • Integral on/off switch enables individual fixtures to be switched for servicing.

**Alternate GTYPE Track Adapter** Compatible with track systems based on GES type track, including Lithonia LT Commercial Track (not LTS type) • System specific and assembled to track fixture • Consult factory for additional information.

**Alternate HTYPE Track Adapter** Compatible with track systems which use a H-type track adapter, including Lithonia LTS Decorative Track (not LT type) • System specific and assembled to track fixture • Two-position power contact provided for two-circuit application • Consult factory for additional information.

**Alternate LTYPE Track Adapter** Compatible with track systems which use a L-type track adapter • System specific and assembled to track fixture • Two-position power contact provided for two-circuit application • Consult factory for additional information.

**Accessory Holder** Integral to fixture design • Die cast aluminum construction • Precision bayonet mounting • Accommodates up to two accessories if desired.

**Aiming** 360° horizontal coverage • 105° vertical aiming capability.

**Labels** UL and C-UL Listed • ENERGY STAR® certified • DesignLights Consortium® qualified where noted in Performance Data • Union made • Assembled in U.S.A.

## Government Procurement

**BAA – Buy America(n) Act:** Product qualifies as a domestic end product under the Buy American Act as implemented in the FAR and DFARS. Product also qualifies as manufactured in the United States under DOT Buy America regulations.

**BABA – Build America Buy America:** Product qualifies as produced in the United States under the definitions of the Build America, Buy America Act.

Please refer to [www.acuitybrands.com/buy-american](http://www.acuitybrands.com/buy-american) for additional information.

**Warranty** 5-year limited warranty. This is the only warranty provided and no other statements in this specification sheet create any warranty of any kind. All other express and implied warranties are disclaimed. Complete warranty terms located at: [www.acuitybrands.com/support/warranty/terms-and-conditions](http://www.acuitybrands.com/support/warranty/terms-and-conditions)

**Note:** Actual performance may differ as a result of end-user environment and application. All values are design or typical values, measured under laboratory conditions at 25 °C. Specifications subject to change without notice.

ConTech is a registered trademark of ConTech Lighting.



# TRAC-MASTER®

Avant Garde

## CYLINDRA™ 15W LED

### T254L G2

#### ORDERING INFORMATION

Ordering Example: T254L G2 27K 90CRI PDIM SP BL

Series	Mounting Adapter Type	Generation	Color Temperature	Color Rendering Index	Dimming Compatibility	Distribution	Finish
<b>T254L</b> 15W Cylindra LED	<b>(Blank)</b> Juno Universal Track Adapter <b>TEK</b> TEK 120V Track Adapter <b>GTYPE</b> G-Type Track Adapter <b>HTYPE</b> H-Type Track Adapter <b>LTYPE</b> L-Type Track Adapter See page 5 for Direct Canopy Mount Option (CPY) specifications.	<b>G2</b> Gen 2	<b>27K</b> 2700K <b>30K</b> 3000K <b>35K</b> 3500K <b>40K</b> 4000K	<b>80CRI</b> 80 CRI <b>90CRI</b> 90 CRI <b>SPW<sup>2</sup></b> SpectralWhite	<b>PDIM</b> Phase Dimmable	<b>SP</b> Spot <b>NFL</b> Narrow Flood <b>FL</b> Flood	<b>BL</b> Black <b>SL</b> Silver <b>WH</b> White

Accessories (Order Separately)							
<b>HCLBL 375</b>	Hexcell Louver - Black	<b>TBDR BLCK 375</b>	Barn Doors - Black	<b>DIFF 375</b>	Diffusion Lens	<b>TR2 SPT</b>	Reflector – Spot
<b>CCLBL 375</b>	Cube Cell Louver - Black	<b>CGF 375</b>	Color Glass Filter	<b>SOLITE 375</b>	Uniformity Lens (Solite)	<b>TR2 NFLD</b>	Reflector – Narrow Flood
<b>SNOOTBL 375</b>	Snoot - Black	<b>DGF 375</b>	Dichroic Glass Filter	<b>PRISM 375</b>	Prismatic Spread Lens	<b>TR2 FLD</b>	Reflector – Flood
<b>EYEBROWBL 375</b>	Eyebrow - Black	<b>UVF 375</b>	UV Filter	<b>LSPREAD 375</b>	Linear Spread Lens		
				<b>T40N<sup>1</sup></b>	Monopoint Canopy		

See specification sheet [D1.2.2](#) for details and color filter options.Other accessories can be found on specification sheet [D1.2.0](#).

Notes:

- 1 Add finish code to complete catalog number (Example: T40N WH).
- 2 3000K and 3500K only.

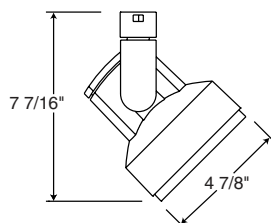
# TRAC-MASTER®

Avant Garde

## CYLINDRA™ 15W LED

### T254L G2

#### DIMENSIONS



#### ELECTRICAL DATA

Input Voltage	120V
Input Current (max.)	0.13A
Power Factor	>0.92

#### PERFORMANCE DATA¹

Catalog Number	Voltage	Input Watts (Typical)	Lumens	Efficacy (LPW)	Rated Life (Hours)	DLC Standard	DLC Premium
T254L G2 27K 80CRI SP	120V	15.2	1429	94	50,000		x
T254L G2 27K 80CRI NFL	120V	15.2	1477	97	50,000		x
T254L G2 27K 80CRI FL	120V	15.2	1504	99	50,000		x
T254L G2 27K 90CRI SP	120V	15.2	1164	77	50,000	x	
T254L G2 27K 90CRI NFL	120V	15.2	1203	79	50,000	x	
T254L G2 27K 90CRI FL	120V	15.2	1225	81	50,000	x	
T254L G2 30K 80CRI SP	120V	15.2	1473	97	50,000		x
T254L G2 30K 80CRI NFL	120V	15.2	1523	100	50,000		x
T254L G2 30K 80CRI FL	120V	15.2	1551	102	50,000		x
T254L G2 30K 90CRI SP	120V	15.2	1208	79	50,000	x	
T254L G2 30K 90CRI NFL	120V	15.2	1249	82	50,000	x	
T254L G2 30K 90CRI FL	120V	15.2	1272	84	50,000	x	
T254L G2 30K SPW SP	120V	15.2	1282	84	50,000		
T254L G2 30K SPW NFL	120V	15.2	1325	87	50,000		
T254L G2 30K SPW FL	120V	15.2	1349	89	50,000		
T254L G2 35K 80CRI SP	120V	15.2	1517	100	50,000		x
T254L G2 35K 80CRI NFL	120V	15.2	1569	103	50,000		x
T254L G2 35K 80CRI FL	120V	15.2	1598	105	50,000		x
T254L G2 35K 90CRI SP	120V	15.2	1252	82	50,000	x	
T254L G2 35K 90CRI NFL	120V	15.2	1295	85	50,000	x	
T254L G2 35K 90CRI FL	120V	15.2	1318	87	50,000	x	
T254L G2 35K SPW SP	120V	15.2	1311	86	50,000		
T254L G2 35K SPW NFL	120V	15.2	1355	89	50,000		
T254L G2 35K SPW FL	120V	15.2	1380	91	50,000		
T254L G2 40K 80CRI SP	120V	15.2	1517	100	50,000		x
T254L G2 40K 80CRI NFL	120V	15.2	1569	103	50,000		x
T254L G2 40K 80CRI FL	120V	15.2	1598	105	50,000		x
T254L G2 40K 90CRI SP	120V	15.2	1282	84	50,000	x	
T254L G2 40K 90CRI NFL	120V	15.2	1325	87	50,000	x	
T254L G2 40K 90CRI FL	120V	15.2	1349	89	50,000	x	

#### Notes:

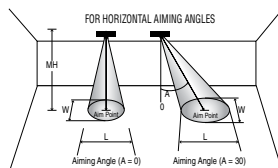
¹ Performance data, including Rated Life, is based on measurements of an individual fixture operating at 120V in a 25°C ambient.

# TRAC-MASTER®

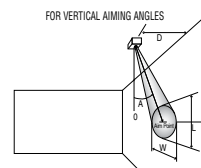
Avant Garde  
**CYLINDRA™ 15W LED**  
**T254L G2**

**CBCP** • Centerbeam candlepower  
**FC** • Footcandles at beam center (aim point)

In vertical aiming applications, aim point (X) is determined by dividing distance from the wall (D) by the tangent of the desired aim angle (A) (0.5774 for 30°, 1.0 for 45°, 1.732 for 60°).






Horizontal Aiming Angles



Vertical Aiming Angles



Lamp	Beam Type	Beam Spread°	Rated Life	CBCP	0°				30°				30°				45°				60°							
					MH	FC	L	W	FC	L	W		D	FC	X	L	W	FC	X	L	W	D	FC	X	L	W		
Cylindra 15W LED 3000K, 80CRI Spot	SP	12°	50000	21510	10	215	2.0	2.0	140	2.7	2.3			4	168	6.9	3.3	1.6	475	4.0	1.6	1.1		8	218	4.6	2.2	1.9
		12	149	2.4	2.4	97	3.2	2.8	6	75	10.4	5.0	2.4	211	6.0	2.4	1.7	10	140	5.8	2.7	2.3						
		14	110	2.8	2.8	71	3.8	3.3	8	42	13.9	6.6	3.2	119	8.0	3.3	2.3	12	97	6.9	3.2	2.8						
		16	84	3.2	3.2	55	4.3	3.7	10	27	17.3	8.3	4.0	76	10.0	4.1	2.8	14	71	8.1	3.8	3.3						
		18	66	3.6	3.6	43	4.8	4.2	12	19	20.8	10.0	4.8	53	12.0	4.9	3.4	16	55	9.2	4.3	3.7						
Cylindra 15W LED 3000K, 80CRI Narrow Flood	NFL	24°	50000	5856	4	366	1.7	1.7	238	2.3	1.9			2	183	3.5	3.9	1.7	518	2.0	1.8	1.2	4	238	2.3	2.3	1.9	
		6	163	2.5	2.5	106	3.4	2.9	3	81	5.2	5.8	2.5	230	3.0	2.6	1.8	5	152	2.9	2.8	2.4						
		8	92	3.4	3.4	59	4.5	3.9	4	46	6.9	7.7	3.4	129	4.0	3.5	2.4	6	106	3.5	3.4	2.9						
		10	59	4.2	4.2	38	5.7	4.8	5	29	8.7	9.7	4.2	83	5.0	4.4	3.0	7	78	4.0	4.0	3.4						
		12	41	5.0	5.0	26	6.8	5.8	6	20	10.4	11.6	5.0	58	6.0	5.3	3.6	8	59	4.6	4.5	3.9						
Cylindra 15W LED 3000K, 80CRI Flood	FL	44°	50000	2889	3	321	2.4	2.4	208	3.4	2.8			1	361	1.7	6.1	1.6	1021	1.0	1.9	1.1	3	208	1.7	3.4	2.8	
		4	181	3.2	3.2	117	4.5	3.7	2	90	3.5	12.2	3.2	255	2.0	3.8	2.3	4	117	2.3	4.5	3.7						
		5	116	4.0	4.0	75	5.6	4.6	3	40	5.2	18.3	4.8	113	3.0	5.7	3.4	5	75	2.9	5.6	4.6						
		6	80	4.8	4.8	52	6.7	5.5	4	23	6.9	24.4	6.4	64	4.0	7.6	4.5	6	52	3.5	6.7	5.5						
		7	59	5.6	5.6	38	7.9	6.4	5	14	8.7	**	8.0	41	5.0	9.5	5.6	7	38	4.0	7.9	6.4						

\*\*Due to steep aiming angle, length of beam extends beyond 25'.

CRI/CCT Multiplier		
CRI	CCT	Multiplier
80	27K	0.97
	30K	1.00
	35K	1.03
	40K	1.03
90	27K	0.79
	30K	0.82
	35K	0.85
	40K	0.87
SPW	30K	0.87
	35K	0.89


**TRAC-MASTER®**

Project: \_\_\_\_\_

Fixture Type: \_\_\_\_\_

Location: \_\_\_\_\_

Contact/Phone: \_\_\_\_\_

Avant Garde  
**CYLINDRA™ 15W LED**  
**T254L G2**


**DIRECT CANOPY MOUNT**

## PRODUCT DESCRIPTION

The Cylindra™ 15W LED approximates the light output and distribution of 90W PAR30 halogen lamps in a PAR30 size fixture, utilizing approximately 1/6 of the energy and having a rated life of 50,000 hours. Available in 2700K, 3000K, 3500K and 4000K color temperatures with a minimum 80 CRI. Optional high CRI versions are available with a minimum 90 CRI and R9 greater than 50. There are also optional SpectralWhite color/white enhancing versions which offer minimum 90 CRI while rendering colors richly and making whites appear naturally brilliant. The contemporary styling of the Cylindra LED enables it to subtly enhance practically any decor without diverting attention from the surrounding environment. Soft curved surfaces combine with clean, crisp edges to provide a uniquely attractive aesthetic. Cylindra's integral, bayonet-mounted accessory holder accommodates up to two accessories if desired. The Canopy Mount version is designed to mount over a standard j-box and is available with a variety of performance options including 277V operation, 347V operation, phase-dimming, and 0-10V dimming.



## Cylindra 15W LED

**Construction** Die cast aluminum housing provides outstanding thermal management of LED, yielding 70% average lumen maintenance at 50,000 hours of operation • Fashionable, elegant design complements any decor • Available in white or black painted finishes.

**LED** High performance LED array provides outstanding reliability, performance and color quality/ consistency • 2700K, 3000K, 3500K or 4000K white phosphor high performance LEDs • Chromaticity range within a 3-step MacAdam Ellipse • 80 CRI minimum on standard product • Optional high CRI versions offer 90 CRI minimum • Optional SpectralWhite color/white enhancing versions are available which make whites appear naturally brilliant and render colors more richly.

**Electrical/Driver** Multi-volt (120-277V, 50/60Hz) phase-dimmable or 0-10V dimmable driver mounted in a deep canopy • Optional 347V 0-10V dimmable driver mounted in a deep canopy • 0-10V dimming requires two (2) additional low-voltage wires to be pulled.

**Dimming** MVOLT versions are phase-dimmable (120V only) down to 10% or less using high quality, factory-approved dimmers - see [T254LG2-DIM](#) • MVOLT versions are also 0-10V dimmable down to as low as 1% and require two (2) additional low-voltage wires to be pulled • 347V versions are 0-10V dimmable down to as low as 1% and require two (2) additional low-voltage wires to be pulled.

**Optics** Interchangeable computer-designed custom faceted reflectors available in three factory configured beam spreads • One reflector provided with fixture (as specified in catalog number) • Accessory reflectors available to enable beam changes in the field • Beam patterns can be altered as desired using a variety of available light control accessories.

**Mounting** Installs over a standard electrical j-box • Accent light is permanently, factory-assembled to the mounting canopy • Universal mounting plate accommodates octagon box and typical j-box mud rings • Mounting plate designed to be installed snug to mounting surface • May be ceiling or wall mounted in any orientation • Driver is assembled into mounting canopy – see Dimensions section for canopy type and dimensions based on option selected • Canopy is securely tethered to mounting plate to facilitate wiring terminations.

**Accessory Holder** Integral to fixture design • Die cast aluminum construction • Precision bayonet mounting • Accommodates up to two accessories if desired.

**Aiming** 360° horizontal coverage • 210° vertical aiming capability.

**Labels** UL and C-UL Damp Location Listed • Union made • Assembled in U.S.A.

## Government Procurement

BAA – Buy America(n) Act: Product qualifies as a domestic end product under the Buy American Act as implemented in the FAR and DFARS. Product also qualifies as manufactured in the United States under DOT Buy America regulations.

BABA – Build America Buy America: Product qualifies as produced in the United States under the definitions of the Build America, Buy America Act.

Please refer to [www.acuitybrands.com/buy-american](http://www.acuitybrands.com/buy-american) for additional information.

**Warranty** 5-year limited warranty. This is the only warranty provided and no other statements in this specification sheet create any warranty of any kind. All other express and implied warranties are disclaimed. Complete warranty terms located at: [www.acuitybrands.com/support/warranty/terms-and-conditions](http://www.acuitybrands.com/support/warranty/terms-and-conditions)

**Note:** Actual performance may differ as a result of end-user environment and application. All values are design or typical values, measured under laboratory conditions at 25 °C. Specifications subject to change without notice.

# TRAC-MASTER®

Avant Garde

## CYLINDRA™ 15W LED

### T254L G2

### DIRECT CANOPY MOUNT

#### ORDERING INFORMATION

Ordering Example: T254L CPY G2 30K 80CRI MVOLT NFL BL

Series	Mounting Adapter Type	Generation	Color Temperature	Color Rendering Index	Input Voltage <sup>2</sup>
<b>T254L</b> 15W Cylindra LED	<b>CPY</b> Canopy Mounting	<b>G2</b> Gen 2	<b>27K</b> 2700K <b>30K</b> 3000K <b>35K</b> 3500K <b>40K</b> 4000K	<b>80CRI</b> 80 CRI <b>90CRI</b> 90 CRI <b>SPW</b> <sup>1</sup> SpectralWhite	<b>MVOLT</b> 120V/277V Operation <b>347</b> 347V Operation

Distribution	Finish
<b>SP</b> Spot <b>NFL</b> Narrow Flood <b>FL</b> Flood	<b>BL</b> Black <b>WH</b> White

Accessories (Order Separately)							
<b>HCLBL 375</b>	Hexcell Louver - Black	<b>TBDR BLCK 375</b>	Barn Doors - Black	<b>DIFF 375</b>	Diffusion Lens	<b>TR2 SPT</b>	Reflector – Spot
<b>CCLBL 375</b>	Cube Cell Louver - Black	<b>CGF 375</b>	Color Glass Filter	<b>SOLITE 375</b>	Uniformity Lens (Solite)	<b>TR2 NFLD</b>	Reflector – Narrow Flood
<b>SNOOTBL 375</b>	Snoot - Black	<b>DGF 375</b>	Dichroic Glass Filter	<b>PRISM 375</b>	Prismatic Spread Lens	<b>TR2 FLD</b>	Reflector – Flood
<b>EYEBROWBL 375</b>	EyeBrow - Black	<b>UVF 375</b>	UV Filter	<b>LSPREAD 375</b>	Linear Spread Lens		

See specification sheet [D1.2.2](#) for details and color filter options.  
Other accessories can be found on specification sheet [D1.2.0](#).

Notes:

- 1 3000K and 3500K only.
- 2 MVOLT option can be either phase-dimmed (120V) or 0-10V dimmed; 347V option is 0-10V dimming only.

# TRAC-MASTER®

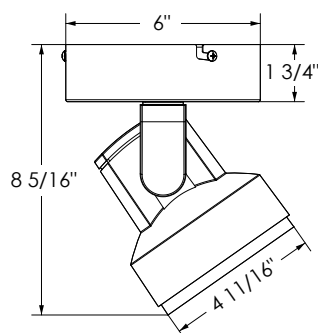
Avant Garde

## CYLINDRA™ 15W LED

### T254L G2

### DIRECT CANOPY MOUNT

#### DIMENSIONS



#### ELECTRICAL DATA

	120V	277V	347V
Input Voltage	120V	277V	347V
Input Wattage (typ.)	14.8	15.1	16.0
Input Current (max.)	0.14A	0.06A	0.06A
Power Factor	>0.99	>0.95	>0.82
T.H.D.	<10%	<20%	<30%

#### PERFORMANCE DATA<sup>1</sup>

Catalog Number	Voltage	Input Watts (Typical)	Lumens	Efficacy (LPW)	Rated Life (Hours)
T254L G2 27K 80CRI SP	120V	14.8	1429	94	50,000
T254L G2 27K 80CRI NFL	120V	14.8	1477	97	50,000
T254L G2 27K 80CRI FL	120V	14.8	1504	99	50,000
T254L G2 27K 90CRI SP	120V	14.8	1164	77	50,000
T254L G2 27K 90CRI NFL	120V	14.8	1203	79	50,000
T254L G2 27K 90CRI FL	120V	14.8	1225	81	50,000
T254L G2 30K 80CRI SP	120V	14.8	1473	97	50,000
T254L G2 30K 80CRI NFL	120V	14.8	1523	100	50,000
T254L G2 30K 80CRI FL	120V	14.8	1551	102	50,000
T254L G2 30K 90CRI SP	120V	14.8	1208	79	50,000
T254L G2 30K 90CRI NFL	120V	14.8	1249	82	50,000
T254L G2 30K 90CRI FL	120V	14.8	1272	84	50,000
T254L G2 30K SPW SP	120V	14.8	1282	84	50,000
T254L G2 30K SPW NFL	120V	14.8	1325	87	50,000
T254L G2 30K SPW FL	120V	14.8	1349	89	50,000
T254L G2 35K 80CRI SP	120V	14.8	1517	100	50,000
T254L G2 35K 80CRI NFL	120V	14.8	1569	103	50,000
T254L G2 35K 80CRI FL	120V	14.8	1598	105	50,000
T254L G2 35K 90CRI SP	120V	14.8	1252	82	50,000
T254L G2 35K 90CRI NFL	120V	14.8	1295	85	50,000
T254L G2 35K 90CRI FL	120V	14.8	1318	87	50,000
T254L G2 35K SPW SP	120V	14.8	1311	86	50,000
T254L G2 35K SPW NFL	120V	14.8	1355	89	50,000
T254L G2 35K SPW FL	120V	14.8	1380	91	50,000
T254L G2 40K 80CRI SP	120V	14.8	1517	100	50,000
T254L G2 40K 80CRI NFL	120V	14.8	1569	103	50,000
T254L G2 40K 80CRI FL	120V	14.8	1598	105	50,000
T254L G2 40K 90CRI SP	120V	14.8	1282	84	50,000
T254L G2 40K 90CRI NFL	120V	14.8	1325	87	50,000
T254L G2 40K 90CRI FL	120V	14.8	1349	89	50,000

#### Notes:

<sup>1</sup> Performance data, including Rated Life, is based on measurements of an individual fixture operating at 120V in a 25°C ambient.

# TRAC-MASTER®

Avant Garde

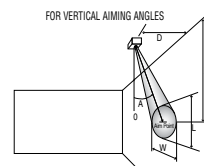
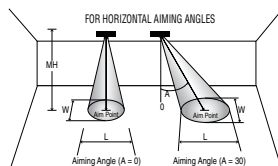
## CYLINDRA™ 15W LED

### T254L G2

### DIRECT CANOPY MOUNT

**CBCP** • Centerbeam candlepower  
**FC** • Footcandles at beam center (aim point)

In vertical aiming applications, aim point (X) is determined by dividing distance from the wall (D) by the tangent of the desired aim angle (A) (0.5774 for 30°, 1.0 for 45°, 1.732 for 60°).



Lamp	Beam Type	Beam Spread°	Rated Life	CBCP	0°				30°				30°				45°				60°				
					MH	FC	L	W	FC	L	W	D	FC	X	L	W	FC	X	L	W	D	FC	X	L	W
Cylindra 15W LED 3000K, 80CRI Spot	SP	12°	50000	21510	10	215	2.0	2.0	140	2.7	2.3	4	168	6.9	3.3	1.6	475	4.0	1.6	1.1	8	218	4.6	2.2	1.9
					12	149	2.4	2.4	97	3.2	2.8	6	75	10.4	5.0	2.4	211	6.0	2.4	1.7	10	140	5.8	2.7	2.3
					14	110	2.8	2.8	71	3.8	3.3	8	42	13.9	6.6	3.2	119	8.0	3.3	2.3	12	97	6.9	3.2	2.8
					16	84	3.2	3.2	55	4.3	3.7	10	27	17.3	8.3	4.0	76	10.0	4.1	2.8	14	71	8.1	3.8	3.3
					18	66	3.6	3.6	43	4.8	4.2	12	19	20.8	10.0	4.8	53	12.0	4.9	3.4	16	55	9.2	4.3	3.7
Cylindra 15W LED 3000K, 80CRI Narrow Flood	NFL	24°	50000	5856	4	366	1.7	1.7	238	2.3	1.9	2	183	3.5	3.9	1.7	518	2.0	1.8	1.2	4	238	2.3	2.3	1.9
					6	163	2.5	2.5	106	3.4	2.9	3	81	5.2	5.8	2.5	230	3.0	2.6	1.8	5	152	2.9	2.8	2.4
					8	92	3.4	3.4	59	4.5	3.9	4	46	6.9	7.7	3.4	129	4.0	3.5	2.4	6	106	3.5	3.4	2.9
					10	59	4.2	4.2	38	5.7	4.8	5	29	8.7	9.7	4.2	83	5.0	4.4	3.0	7	78	4.0	4.0	3.4
					12	41	5.0	5.0	26	6.8	5.8	6	20	10.4	11.6	5.0	58	6.0	5.3	3.6	8	59	4.6	4.5	3.9
Cylindra 15W LED 3000K, 80CRI Flood	FL	44°	50000	2889	3	321	2.4	2.4	208	3.4	2.8	1	361	1.7	6.1	1.6	1021	1.0	1.9	1.1	3	208	1.7	3.4	2.8
					4	181	3.2	3.2	117	4.5	3.7	2	90	3.5	12.2	3.2	255	2.0	3.8	2.3	4	117	2.3	4.5	3.7
					5	116	4.0	4.0	75	5.6	4.6	3	40	5.2	18.3	4.8	113	3.0	5.7	3.4	5	75	2.9	5.6	4.6
					6	80	4.8	4.8	52	6.7	5.5	4	23	6.9	24.4	6.4	64	4.0	7.6	4.5	6	52	3.5	6.7	5.5
					7	59	5.6	5.6	38	7.9	6.4	5	14	8.7	**	8.0	41	5.0	9.5	5.6	7	38	4.0	7.9	6.4

\*\*Due to steep aiming angle, length of beam extends beyond 25'.

CRI/CCT Multiplier		
CRI	CCT	Multiplier
80	27K	0.97
	30K	1.00
	35K	1.03
	40K	1.03
90	27K	0.79
	30K	0.82
	35K	0.85
	40K	0.87
SPW	30K	0.87
	35K	0.89