



TRAC-MASTER®

Avant Garde

24W VERTICAL CYLINDER LED

Project: _____

Fixture Type: _____

Location: _____

Contact/Phone: _____



T383L G2

PRODUCT DESCRIPTION

The classic, simple appearance of the Vertical Cylinder LED fixtures offers a fresh take on a traditional aesthetic. The subtle elegance is carried through the entire design producing an understated charm. The 24W Vertical Cylinder LED fixtures have integral TIR optics which enable uniform spot, narrow flood, flood or wide flood distributions to be achieved. These fixtures have an integral, bayonet-mounted accessory holder that accommodates up to two accessories if desired. The 24W Vertical Cylinder LED can deliver up to 2446 lumens, at efficacies up to 102LPW and having a rated life of 50,000 hours. Available in 2700K, 3000K, 3500K and 4000K color temperatures, the white-light 24W Vertical Cylinder LED is compatible with all Juno line voltage track and standard adapter accessories.



PRODUCT SPECIFICATIONS

Construction All-metal housing and custom designed concealed heat sink provides outstanding thermal management, yielding 70% average lumen maintenance at 50,000 hours of operation • Passively-cooled design – no moving parts to break or wear-out • Extruded aluminum vertically mounted LED driver housing • Concealed fixture wiring for a clean aesthetic • Fashionable, elegant design complements any decor • Available in white, black and silver painted finishes.

LED High performance LED array provides outstanding reliability, performance and color quality/consistency • 2700K, 3000K, 3500K or 4000K white phosphor high performance LEDs • Chromaticity range within a 3-step MacAdam Ellipse • 80 CRI minimum on standard product • Optional high CRI versions offer 90 CRI minimum • Optional SpectralWhite versions are also available which make whites appear naturally brilliant and render colors more richly.

Driver Assembled in a side-mount vertical housing to minimize overall fixture footprint • Insulating air gap between driver and LED light engine optimizes thermal operation • Provides quiet operation with or without dimming • 120V fixtures are dimmable using high quality, factory approved reverse phase ELV dimmers - see [T383LG2-DIM](#) • Solid state electronic, Class 2 compliant • Integral overcurrent and short circuit protection • Class B FCC Part 15 rated.

Optics Interchangeable computer-designed custom TIR optics available in four factory-configured beam spreads • One TIR optic provided with fixture (as specified in catalog number) • Accessory optics available to enable beam changes in the field • Beam patterns can be altered as desired using a variety of available light control accessories.

Juno Universal Track Adapter Universally compatible with both Trac-Master 1-circuit or 2-circuit track, Trac-Lites track, monopoints and special mountings • Also UL Recognized for use on ConTech® LT Series track • Copper alloy contacts provide precise spring action – no arcing and will not take a set • True, positive electrical ground • On/off switch included • Patented embossed polarity arrows on bottom of adapter • Spring-loaded positive latch with embossed polarity arrows secures track light to track • Two-position power contact provided for two-circuit application.

Alternate TEK/HTEK Track Adapter Compatible with either Juno TEK or HTEK track systems • System specific and assembled to track fixture • Integrally polarized construction to prevent reverse installation – only allows insertion in proper orientation • Rotary circuit selector enables simple switching between circuits • Integral on/off switch enables individual fixtures to be switched for servicing.

Alternate GTYPE Track Adapter Compatible with track systems based on GES type track, including Lithonia LT Commercial Track (not LTS type) • System specific and assembled to track fixture • Consult factory for additional information.

Alternate HTYPE Track Adapter Compatible with track systems which use a H-type track adapter, including Lithonia LTS Decorative Track (not LT type) • System specific and assembled to track fixture • Two-position power contact provided for two-circuit application • Consult factory for additional information.

Alternate LTYPE Track Adapter Compatible with track systems which use a L-type track adapter • System specific and assembled to track fixture • Two-position power contact provided for two-circuit application • Consult factory for additional information.

Accessory Holder Integral to fixture design • Die cast aluminum construction • Precision bayonet mounting • Accommodates one accessory if desired.

Aiming 360° horizontal coverage • Greater than 90° vertical aiming capability.

Labels UL and C-UL Listed • 80 CRI versions are DesignLights Consortium® Qualified; HTEK option excluded. • 90CRI and SPW versions can be used to comply with California Title 24, Part 6 high efficacy LED light source requirements • Union made • Assembled in U.S.A.

Government Procurement

BAA – Buy America(n) Act: Product qualifies as a domestic end product under the Buy American Act as implemented in the FAR and DFARS. Product also qualifies as manufactured in the United States under DOT Buy America regulations.

BABA – Build America Buy America: Product qualifies as produced in the United States under the definitions of the Build America, Buy America Act.

Please refer to www.acuitybrands.com/buy-american for additional information.

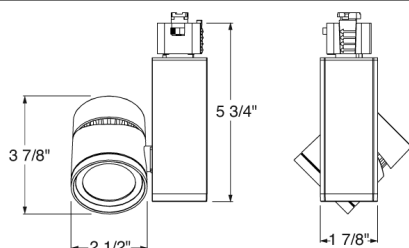
Warranty 5-year limited warranty. This is the only warranty provided and no other statements in this specification sheet create any warranty of any kind. All other express and implied warranties are disclaimed. Complete warranty terms located at: www.acuitybrands.com/support/warranty/terms-and-conditions

Note: Actual performance may differ as a result of end-user environment and application.

All values are design or typical values, measured under laboratory conditions at 25 °C.

Specifications subject to change without notice.

DIMENSIONS



ConTech is a registered trademark of ConTech Lighting.





24W VERTICAL CYLINDER LED

T383L G2

ORDERING INFORMATION

Ordering Example: T383L G2 27K 80CRI PDIM SP BL

Series	Mounting Adapter Type	Generation	Color Temperature	Color Rendering Index
T383L 24W Vertical Cylinder LED	(Blank) Juno Universal 120V Track Adapter	G2 Generation 2	27K 2700K	80CRI 80 CRI
	HTEK ¹ HTEK 277V Track Adapter		30K 3000K	90CRI 90 CRI
	TEK TEK 120V Track Adapter		35K 3500K	SPW ² SpectralWhite
	GTYPE G-Type Track Adapter		40K 4000K	
	HTYPE H-Type Track Adapter			
	LTYPE L-Type Track Adapter			
See page 5 for Direct Canopy Mount Option (CPY) specifications.				

Dimming Compatibility	Distribution	Finish
OFF ¹ On/Off (Non-Dimming)	SP Spot	BL Black
PDIM Phase Dimmable	NFL Narrow Flood	SL Silver
	FL Flood	WH White
	WFL Wide Flood	

Accessories					
HCLBL 200	Hexcell Louver - Black	DIFF 200	Diffusion Lens	TIR1 SPT	TIR Optic - Spot
SNOOTBL 200	Snoot - Black	SOLITE 200	Uniformity Lens	TIR1 NFLD	TIR Optic - Narrow Flood
CGF 200	Color Glass Filters	PRISM 200	Prismatic Spread Lens	TIR1 FLD	TIR Optic - Flood
DGF 200	Dichroic Glass Filters	LSPREAD 200	Linear Spread Lens	TIR5 WFLD	TIR Optic - Wide Flood
DCCF 200 ³	Dichroic Color Correction Filters	T40N ⁴	Monopoint Canopy		
UVF 200	UV Filter				

See specification sheet [D1.2.2](#) for details. Other accessories can be found on specification sheet [D1.2.0](#).

Notes:

- 1 HTEK versions available with OFF option only, and OFF option available with HTEK versions only; HTEK option not qualified for DLC®.
- 2 3000K and 3500K only.
- 3 DCCF 200 HAL2700 corrects 3000K color to approximately 2700K and 4000K color to approximately 3400K.
- 4 Add finish code to complete catalog number (Example: T40N WH).



24W VERTICAL CYLINDER LED

T383L G2

PERFORMANCE DATA¹

Catalog Number	Input Voltage	Input Watts (Typical)	Lumens	Efficacy (LPW)	Rated Life (Hours)
T383L G2 27K 80CRI PDIM SP	120V	24.1	2238	93	50,000
T383L G2 27K 80CRI PDIM NFL	120V	24.1	2228	92	50,000
T383L G2 27K 80CRI PDIM FL	120V	24.1	2271	94	50,000
T383L G2 27K 80CRI PDIM WFL	120V	24.1	2128	88	50,000
T383L G2 27K 90CRI PDIM SP	120V	24.1	1933	80	50,000
T383L G2 27K 90CRI PDIM NFL	120V	24.1	1924	80	50,000
T383L G2 27K 90CRI PDIM FL	120V	24.1	1961	81	50,000
T383L G2 27K 90CRI PDIM WFL	120V	24.1	1838	76	50,000
T383L G2 30K 80CRI PDIM SP	120V	24.1	2238	93	50,000
T383L G2 30K 80CRI PDIM NFL	120V	24.1	2228	92	50,000
T383L G2 30K 80CRI PDIM FL	120V	24.1	2271	94	50,000
T383L G2 30K 80CRI PDIM WFL	120V	24.1	2128	88	50,000
T383L G2 30K 90CRI PDIM SP	120V	24.1	1974	82	50,000
T383L G2 30K 90CRI PDIM NFL	120V	24.1	1965	82	50,000
T383L G2 30K 90CRI PDIM FL	120V	24.1	2003	83	50,000
T383L G2 30K 90CRI PDIM WFL	120V	24.1	1877	78	50,000
T383L G2 30K SPW PDIM SP	120V	24.1	2065	86	50,000
T383L G2 30K SPW PDIM NFL	120V	24.1	2056	85	50,000
T383L G2 30K SPW PDIM FL	120V	24.1	2096	87	50,000
T383L G2 30K SPW PDIM WFL	120V	24.1	1964	81	50,000
T383L G2 35K 80CRI PDIM SP	120V	24.1	2370	98	50,000
T383L G2 35K 80CRI PDIM NFL	120V	24.1	2360	98	50,000
T383L G2 35K 80CRI PDIM FL	120V	24.1	2405	100	50,000
T383L G2 35K 80CRI PDIM WFL	120V	24.1	2254	94	50,000
T383L G2 35K 90CRI PDIM SP	120V	24.1	2096	87	50,000
T383L G2 35K 90CRI PDIM NFL	120V	24.1	2086	87	50,000
T383L G2 35K 90CRI PDIM FL	120V	24.1	2126	88	50,000
T383L G2 35K 90CRI PDIM WFL	120V	24.1	1993	83	50,000
T383L G2 35K SPW PDIM SP	120V	24.1	2116	88	50,000
T383L G2 35K SPW PDIM NFL	120V	24.1	2106	87	50,000
T383L G2 35K SPW PDIM FL	120V	24.1	2147	89	50,000
T383L G2 35K SPW PDIM WFL	120V	24.1	2012	83	50,000
T383L G2 40K 80CRI PDIM SP	120V	24.1	2411	100	50,000
T383L G2 40K 80CRI PDIM NFL	120V	24.1	2400	100	50,000
T383L G2 40K 80CRI PDIM FL	120V	24.1	2446	102	50,000
T383L G2 40K 80CRI PDIM WFL	120V	24.1	2292	95	50,000
T383L G2 40K 90CRI PDIM SP	120V	24.1	2136	89	50,000
T383L G2 40K 90CRI PDIM NFL	120V	24.1	2127	88	50,000
T383L G2 40K 90CRI PDIM FL	120V	24.1	2168	90	50,000
T383L G2 40K 90CRI PDIM WFL	120V	24.1	2031	84	50,000

Notes:

¹ Performance data, including Rated Life, is based on measurements of an individual fixture operating at 120V in a 25°C ambient.

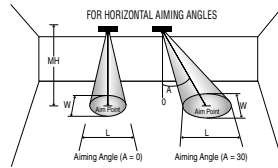
ELECTRICAL DATA

Input Voltage	120V	277V
Input Current (max.)	0.22A	0.10A
Power Factor	>0.99	>0.97
T.H.D.	<10%	<10%

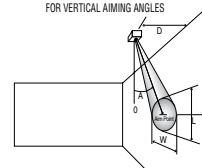
PHOTOMETRICS

CBCP • Centerbeam candlepower
FC • Footcandles at beam center (aim point)

In vertical aiming applications, aim point (X) is determined by dividing distance from the wall (D) by the tangent of the desired aim angle (A) (0.5774 for 30°, 1.0 for 45°, 1.732 for 60°).



Horizontal Aiming Angles



Vertical Aiming Angles



Fixture	Beam Type	Beam Spread	Rated Life	CBCP	0°				30°				30°					45°					60°				
					MH	FC	L	W	FC	L	W	D	FC	X	L	W	FC	X	L	W	D	FC	X	L	W		
Vertical Cylinder 24W LED, 30K, 80CRI Spot	SP	16°	50000	21541	8	337	2.2	2.2	219	3.0	2.6	4	168	6.9	4.7	2.2	476	4.0	2.3	1.6	8	219	4.6	3.0	2.6		
					10	215	2.8	2.8	140	3.7	3.2	5	108	8.7	5.9	2.8	305	5.0	2.8	2.0	10	140	5.8	3.7	3.2		
					12	150	3.4	3.4	97	4.5	3.9	6	75	10.4	7.1	3.4	212	6.0	3.4	2.4	12	97	6.9	4.5	3.9		
					14	110	3.9	3.9	71	5.2	4.5	7	55	12.1	8.3	3.9	155	7.0	4.0	2.8	14	71	8.1	5.2	4.5		
					16	84	4.5	4.5	55	6.0	5.2	8	42	13.9	9.5	4.5	119	8.0	4.6	3.2	16	55	9.2	6.0	5.2		
Vertical Cylinder 24W LED, 30K, 80CRI Narrow Flood	NFL	27°	50000	9269	6	257	2.8	2.8	167	3.9	3.3	2	290	3.5	4.5	1.9	819	2.0	2.0	1.3	6	167	3.5	3.9	3.3		
					8	145	3.8	3.8	94	5.1	4.4	3	129	5.2	6.8	2.8	364	3.0	3.0	2.0	7	123	4.0	4.5	3.8		
					10	93	4.7	4.7	60	6.4	5.5	4	72	6.9	9.1	3.8	205	4.0	4.0	2.7	8	94	4.6	5.1	4.4		
					12	64	5.7	5.7	42	7.7	6.6	5	46	8.7	11.4	4.7	131	5.0	5.0	3.3	9	74	5.2	5.8	4.9		
					14	47	6.6	6.6	31	9.0	7.6	6	32	10.4	13.6	5.7	91	6.0	6.0	4.0	10	60	5.8	6.4	5.5		
Vertical Cylinder 24W LED, 30K, 80CRI Flood	FL	38°	50000	5223	4	326	2.8	2.8	212	3.8	3.2	2	163	3.5	8.6	2.8	462	2.0	3.1	1.9	3	377	1.7	2.9	2.4		
					5	209	3.4	3.4	136	4.8	4.0	3	73	5.2	12.8	4.1	205	3.0	4.7	2.9	4	212	2.3	3.8	3.2		
					6	145	4.1	4.1	94	5.7	4.8	4	41	6.9	17.1	5.5	115	4.0	6.3	3.9	5	136	2.9	4.8	4.0		
					7	107	4.8	4.8	69	6.7	5.6	5	26	8.7	21.4	6.9	74	5.0	7.8	4.9	6	94	3.5	5.7	4.8		
					8	82	5.5	5.5	53	7.6	6.4	6	18	10.4	**	8.3	51	6.0	9.4	5.8	7	69	4.0	6.7	5.6		
Vertical Cylinder 24W LED, 30K, 80CRI Wide Flood	WFL	53°	50000	2365	2	591	2.0	2.0	384	2.9	2.3	1.0	296	1.7	14.9	2.0	836	1.0	2.6	1.4	2	384	1.2	2.9	2.3		
					3	263	3.0	3.0	171	4.3	3.4	1.5	131	2.6	22.4	3.0	372	1.5	3.9	2.1	3	171	1.7	4.3	3.4		
					4	148	4.0	4.0	96	5.7	4.6	2.0	74	3.5	**	4.0	209	2.0	5.2	2.8	4	96	2.3	5.7	4.6		
					5	95	4.9	4.9	61	7.2	5.7	2.5	47	4.3	**	4.9	134	2.5	6.6	3.5	5	61	2.9	7.2	5.7		
					6	66	5.9	5.9	43	8.6	6.9	3.0	33	5.2	**	5.9	93	3.0	7.9	4.2	6	43	3.5	8.6	6.9		

**Due to steep aiming angle, length of beam extends beyond 25'.

CRI/CCT Multiplier		
CRI	CCT	Multiplier
80	27K	1.00
	30K	1.00
	35K	1.06
	40K	1.08
90	27K	0.86
	30K	0.88
	35K	0.94
	40K	0.95
SPW	30K	0.92
	35K	0.95


TRAC-MASTER®

Avant Garde

24W VERTICAL CYLINDER LED

T383L G2
DIRECT CANOPY MOUNT

Project: _____

Fixture Type: _____

Location: _____

Contact/Phone: _____



PRODUCT DESCRIPTION

The classic, simple appearance of the Vertical Cylinder LED fixtures offers a fresh take on a traditional aesthetic. The subtle elegance is carried through the entire design producing an understated charm. The 24W Vertical Cylinder LED fixtures have integral TIR optics which enable uniform spot, narrow flood, flood or wide flood distributions to be achieved. These fixtures have an integral, bayonet-mounted accessory holder that accommodates up to two accessories if desired. The 24W Vertical Cylinder LED can deliver up to 2446 lumens, at efficacies up to 102LPW and having a rated life of 50,000 hours. The Canopy Mount version is designed to mount over a standard j-box and is available with a variety of performance options including 277V operation, 347V operation, phase-dimming, and 0-10V dimming.



PRODUCT SPECIFICATIONS

Construction All-metal housing and custom designed concealed heat sink provides outstanding thermal management, yielding 70% average lumen maintenance at 50,000 hours of operation • Passively-cooled design – no moving parts to break or wear-out • Extruded aluminum vertically mounted LED driver housing • Concealed fixture wiring for a clean aesthetic • Fashionable, elegant design complements any decor • Available in white or black painted finishes.

LED High performance LED array provides outstanding reliability, performance and color quality/consistency • 2700K, 3000K, 3500K or 4000K white phosphor high performance LEDs • Chromaticity range within a 3-step MacAdam Ellipse • 80 CRI minimum on standard product • Optional high CRI versions offer 90 CRI minimum • Optional SpectralWhite versions are also available which make whites appear naturally brilliant and render colors more richly.

Electrical/Driver Multi-volt (120-277V, 50/60Hz) phase-dimmable or 0-10V dimmable driver mounted in a vertical driver housing and assembled to a slim canopy • Optional 347V 0-10V dimmable driver mounted in a deep canopy • 0-10V dimming requires two (2) additional low-voltage wires to be pulled.

Dimming MVOLT versions are phase-dimmable (120V only) down to 10% or less using high quality, factory-approved dimmers - see [T383LG2-DIM](#) • MVOLT versions are also 0-10V dimmable down to as low as 1% and require two (2) additional low-voltage wires to be pulled • 347V versions are 0-10V dimmable down to as low as 1% and require two (2) additional low-voltage wires to be pulled.

Optics Interchangeable computer-designed custom TIR optics available in four factory-configured beam spreads • One TIR optic provided with fixture (as specified in catalog number) • Accessory optics available to enable beam changes in the field • Beam patterns can be altered as desired using a variety of available light control accessories.

Mounting Installs over a standard electrical j-box • Accent light is permanently, factory-assembled to the mounting canopy • Universal mounting plate accommodates octagon box and typical j-box mud rings • Mounting plate designed to be installed snug to mounting surface • May be ceiling or wall mounted in any orientation • Driver is assembled into vertical driver housing for MVOLT versions or into deep mounting canopy for 347V versions – see Dimensions section for canopy type and dimensions based on option selected • Canopy is securely tethered to mounting plate to facilitate wiring terminations.

Accessory Holder Integral to fixture design • Die cast aluminum construction • Precision bayonet mounting • Accommodates one accessory if desired.

Aiming 360° horizontal coverage • Greater than 180° vertical aiming capability.

Labels UL and C-UL Damp Location Listed • Union made • Assembled in U.S.A.

Government Procurement

BAA – Buy America(n) Act: Product qualifies as a domestic end product under the Buy American Act as implemented in the FAR and DFARS. Product also qualifies as manufactured in the United States under DOT Buy America regulations.

BABA – Build America Buy America: Product qualifies as produced in the United States under the definitions of the Build America, Buy America Act.

Please refer to www.acuitybrands.com/buy-american for additional information.

Warranty 5-year limited warranty. This is the only warranty provided and no other statements in this specification sheet create any warranty of any kind. All other express and implied warranties are disclaimed. Complete warranty terms located at: www.acuitybrands.com/support/warranty/terms-and-conditions

Note: Actual performance may differ as a result of end-user environment and application. All values are design or typical values, measured under laboratory conditions at 25 °C. Specifications subject to change without notice.

24W VERTICAL CYLINDER LED

T383L G2

DIRECT CANOPY MOUNT

ORDERING INFORMATION

Ordering Example: T383L CPY G2 30K 80CRI MVOLT NFL BL

Series	Mounting Adapter Type	Generation	Color Temperature	Color Rendering Index	Input Voltage ²
T383L 24W Vertical Cylinder LED	CPY Canopy Mounting	G2 Generation 2	27K 2700K 30K 3000K 35K 3500K 40K 4000K	80CRI 80 CRI 90CRI 90 CRI SPW¹ SpectralWhite	MVOLT 120V/277V Operation 347 347V Operation

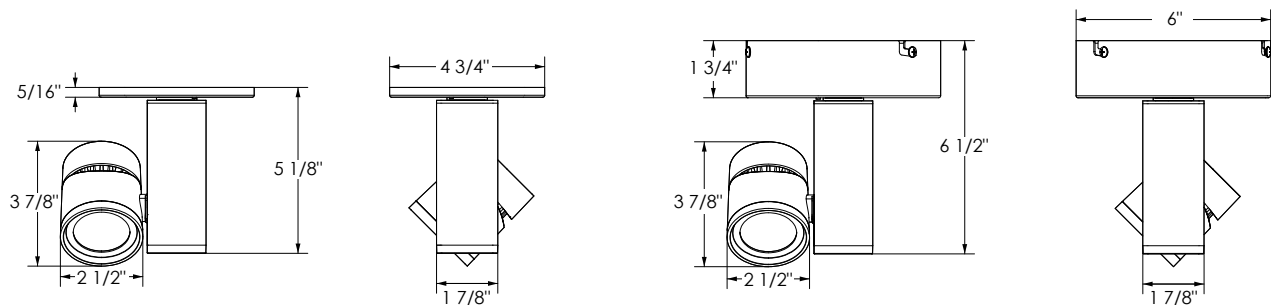
Distribution	Finish
SP Spot NFL Narrow Flood FL Flood WFL Wide Flood	BL Black WH White

Accessories (Order Separately)					
HCLBL 200	Hexcell Louver - Black	UVF 200	UV Filter	TIR1 SPT	TIR Optic - Spot
SNOOTBL 200	Snoot - Black	DIFF 200	Diffusion Lens	TIR1 NFLD	TIR Optic - Narrow Flood
CGF 200	Color Glass Filters	SOLITE 200	Uniformity Lens	TIR1 FLD	TIR Optic - Flood
DGF 200	Dichroic Glass Filters	PRISM 200	Prismatic Spread Lens	TIR5 WFLD	TIR Optic - Wide Flood
DCCF 200	Dichroic Color Correction Filters	LSPREAD 200	Linear Spread Lens		

See specification sheet [D1.2.2](#) for details. Other accessories can be found on specification sheet [D1.2.0](#).

Notes:
1 3000K and 3500K only.
2 MVOLT option can be either phase-dimmed (120V) or 0-10V dimmed; 347V option is 0-10V dimming only.

DIMENSIONS



Slim Canopy (MVOLT 120-277V Versions)

Deep Canopy (347V Versions)


TRAC-MASTER®

Avant Garde

24W VERTICAL CYLINDER LED
T383L G2
DIRECT CANOPY MOUNT
ELECTRICAL DATA

Input Voltage	120V	277V	347V
Input Wattage (typ.)	23.6	23.8	24.4
Input Current (max.)	0.22A	0.10A	0.08A
Power Factor	>0.99	>0.97	>0.93
T.H.D.	<10%	<10%	<20%

PERFORMANCE DATA¹

Catalog Number	Input Voltage	Input Watts (Typical)	Lumens	Efficacy (LPW)	Rated Life (Hours)
T383L G2 27K 80CRI PDIM SP	120V	23.6	2238	93	50,000
T383L G2 27K 80CRI PDIM NFL	120V	23.6	2228	92	50,000
T383L G2 27K 80CRI PDIM FL	120V	23.6	2271	94	50,000
T383L G2 27K 80CRI PDIM WFL	120V	23.6	2128	88	50,000
T383L G2 27K 90CRI PDIM SP	120V	23.6	1933	80	50,000
T383L G2 27K 90CRI PDIM NFL	120V	23.6	1924	80	50,000
T383L G2 27K 90CRI PDIM FL	120V	23.6	1961	81	50,000
T383L G2 27K 90CRI PDIM WFL	120V	23.6	1838	76	50,000
T383L G2 30K 80CRI PDIM SP	120V	23.6	2238	93	50,000
T383L G2 30K 80CRI PDIM NFL	120V	23.6	2228	92	50,000
T383L G2 30K 80CRI PDIM FL	120V	23.6	2271	94	50,000
T383L G2 30K 80CRI PDIM WFL	120V	23.6	2128	88	50,000
T383L G2 30K 90CRI PDIM SP	120V	23.6	1974	82	50,000
T383L G2 30K 90CRI PDIM NFL	120V	23.6	1965	82	50,000
T383L G2 30K 90CRI PDIM FL	120V	23.6	2003	83	50,000
T383L G2 30K 90CRI PDIM WFL	120V	23.6	1877	78	50,000
T383L G2 30K SPW PDIM SP	120V	23.6	2065	86	50,000
T383L G2 30K SPW PDIM NFL	120V	23.6	2056	85	50,000
T383L G2 30K SPW PDIM FL	120V	23.6	2096	87	50,000
T383L G2 30K SPW PDIM WFL	120V	23.6	1964	81	50,000
T383L G2 35K 80CRI PDIM SP	120V	23.6	2370	98	50,000
T383L G2 35K 80CRI PDIM NFL	120V	23.6	2360	98	50,000
T383L G2 35K 80CRI PDIM FL	120V	23.6	2405	100	50,000
T383L G2 35K 80CRI PDIM WFL	120V	23.6	2254	94	50,000
T383L G2 35K 90CRI PDIM SP	120V	23.6	2096	87	50,000
T383L G2 35K 90CRI PDIM NFL	120V	23.6	2086	87	50,000
T383L G2 35K 90CRI PDIM FL	120V	23.6	2126	88	50,000
T383L G2 35K 90CRI PDIM WFL	120V	23.6	1993	83	50,000
T383L G2 35K SPW PDIM SP	120V	23.6	2116	88	50,000
T383L G2 35K SPW PDIM NFL	120V	23.6	2106	87	50,000
T383L G2 35K SPW PDIM FL	120V	23.6	2147	89	50,000
T383L G2 35K SPW PDIM WFL	120V	23.6	2012	83	50,000
T383L G2 40K 80CRI PDIM SP	120V	23.6	2411	100	50,000
T383L G2 40K 80CRI PDIM NFL	120V	23.6	2400	100	50,000
T383L G2 40K 80CRI PDIM FL	120V	23.6	2446	102	50,000
T383L G2 40K 80CRI PDIM WFL	120V	23.6	2292	95	50,000
T383L G2 40K 90CRI PDIM SP	120V	23.6	2136	89	50,000
T383L G2 40K 90CRI PDIM NFL	120V	23.6	2127	88	50,000
T383L G2 40K 90CRI PDIM FL	120V	23.6	2168	90	50,000
T383L G2 40K 90CRI PDIM WFL	120V	23.6	2031	84	50,000

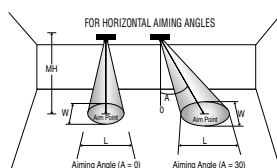
Notes:

¹ Performance data, including Rated Life, is based on measurements of an individual fixture operating at 120V in a 25°C ambient.

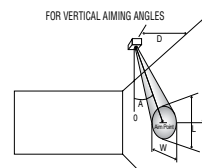
PHOTOMETRICS

CBCP • Centerbeam candlepower
FC • Footcandles at beam center (aim point)

In vertical aiming applications, aim point (X) is determined by dividing distance from the wall (D) by the tangent of the desired aim angle (A) (0.5774 for 30°, 1.0 for 45°, 1.732 for 60°).







Horizontal Aiming Angles



Vertical Aiming Angles



Fixture	Beam Type	Beam Spread	Rated Life	CBCP	0°			30°			30°				45°				60°						
					MH	FC	L	W	FC	L	W	D	FC	X	L	W	FC	X	L	W	D	FC	X	L	W
Vertical Cylinder 24W LED, 30K, 80CRI Spot	SP	16° 	50000	21541	8	337	2.2	2.2	219	3.0	2.6	4	168	6.9	4.7	2.2	476	4.0	2.3	1.6	8	219	4.6	3.0	2.6
					10	215	2.8	2.8	140	3.7	3.2	5	108	8.7	5.9	2.8	305	5.0	2.8	2.0	10	140	5.8	3.7	3.2
					12	150	3.4	3.4	97	4.5	3.9	6	75	10.4	7.1	3.4	212	6.0	3.4	2.4	12	97	6.9	4.5	3.9
					14	110	3.9	3.9	71	5.2	4.5	7	55	12.1	8.3	3.9	155	7.0	4.0	2.8	14	71	8.1	5.2	4.5
					16	84	4.5	4.5	55	6.0	5.2	8	42	13.9	9.5	4.5	119	8.0	4.6	3.2	16	55	9.2	6.0	5.2
Vertical Cylinder 24W LED, 30K, 80CRI Narrow Flood	NFL	27° 	50000	9269	6	257	2.8	2.8	167	3.9	3.3	2	290	3.5	4.5	1.9	819	2.0	2.0	1.3	6	167	3.5	3.9	3.3
					8	145	3.8	3.8	94	5.1	4.4	3	129	5.2	6.8	2.8	364	3.0	3.0	2.0	7	123	4.0	4.5	3.8
					10	93	4.7	4.7	60	6.4	5.5	4	72	6.9	9.1	3.8	205	4.0	4.0	2.7	8	94	4.6	5.1	4.4
					12	64	5.7	5.7	42	7.7	6.6	5	46	8.7	11.4	4.7	131	5.0	5.0	3.3	9	74	5.2	5.8	4.9
					14	47	6.6	6.6	31	9.0	7.6	6	32	10.4	13.6	5.7	91	6.0	6.0	4.0	10	60	5.8	6.4	5.5
Vertical Cylinder 24W LED, 30K, 80CRI Flood	FL	38° 	50000	5223	4	326	2.8	2.8	212	3.8	3.2	2	163	3.5	8.6	2.8	462	2.0	3.1	1.9	3	377	1.7	2.9	2.4
					5	209	3.4	3.4	136	4.8	4.0	3	73	5.2	12.8	4.1	205	3.0	4.7	2.9	4	212	2.3	3.8	3.2
					6	145	4.1	4.1	94	5.7	4.8	4	41	6.9	17.1	5.5	115	4.0	6.3	3.9	5	136	2.9	4.8	4.0
					7	107	4.8	4.8	69	6.7	5.6	5	26	8.7	21.4	6.9	74	5.0	7.8	4.9	6	94	3.5	5.7	4.8
					8	82	5.5	5.5	53	7.6	6.4	6	18	10.4	**	8.3	51	6.0	9.4	5.8	7	69	4.0	6.7	5.6
Vertical Cylinder 24W LED, 30K, 80CRI Wide Flood	WFL	53° 	50000	2365	2	591	2.0	2.0	384	2.9	2.3	1.0	296	1.7	14.9	2.0	836	1.0	2.6	1.4	2	384	1.2	2.9	2.3
					3	263	3.0	3.0	171	4.3	3.4	1.5	131	2.6	22.4	3.0	372	1.5	3.9	2.1	3	171	1.7	4.3	3.4
					4	148	4.0	4.0	96	5.7	4.6	2.0	74	3.5	**	4.0	209	2.0	5.2	2.8	4	96	2.3	5.7	4.6
					5	95	4.9	4.9	61	7.2	5.7	2.5	47	4.3	**	4.9	134	2.5	6.6	3.5	5	61	2.9	7.2	5.7
					6	66	5.9	5.9	43	8.6	6.9	3.0	33	5.2	**	5.9	93	3.0	7.9	4.2	6	43	3.5	8.6	6.9

**Due to steep aiming angle, length of beam extends beyond 25'.

CRI/CCT Multiplier		
CRI	CCT	Multiplier
80	27K	1.00
	30K	1.00
	35K	1.06
	40K	1.08
90	27K	0.86
	30K	0.88
	35K	0.94
	40K	0.95
SPW	30K	0.92
	35K	0.95