



TRAC-MASTER®

Classics

43W FLAT BACK CYLINDER LED

Project: _____

Fixture Type: _____

Location: _____

Contact/Phone: _____



T286L

PRODUCT DESCRIPTION

With its integral driver, the cylindrical aesthetic of the T286L Series offers the simplest of form factors. It is designed with a unique, patented, precision optical system which produces the most uniform spot, narrow flood or flood beam distributions possible. The 43W T286L Series can deliver up to 3900 lumens, utilizing less than 1/3 of the energy of halogen equivalents and having a rated life of 50,000 hours. It is available in 2700K, 3000K, 3500K and 4000K color temperatures and 80 or 90 CRI versions. These fixtures also have an integral, bayonet-mounted optical system that enables quick conversion between beam spreads.



PRODUCT SPECIFICATIONS

Construction Die cast aluminum housing and vented concealed heat sink provides outstanding thermal management, yielding 70% average lumen maintenance at 50,000 hours of operation • Passively-cooled design – no moving parts to break or wear-out • Fashionable, elegant design complements any decor • Available in white, black or silver painted finishes.

LED High performance LED array provides outstanding reliability, performance and color quality/consistency • 2700K, 3000K, 3500K or 4000K white phosphor high performance LEDs • Chromaticity range within a 3-step MacAdam Ellipse • 80 CRI minimum on standard product • Optional high CRI versions offer 90 CRI minimum.

Driver Assembled into upper housing to visually integrate within fixture design • Insulating air gap between driver and LED light engine optimizes thermal operation • Provides quiet operation with or without dimming • 120V fixtures are dimmable using high quality reverse phase ELV dimmers approved by Juno - see [T286L-DIM](#) • Solid state electronic, Class 2 compliant • Integral overcurrent and short circuit protection • Class B FCC Part 15 rated.

Reflector Precision designed patented optical system provides either spot, narrow flood or flood beam distributions • Patented, multi-step optical system ensures a properly color-mixed beam • Accessory optical assemblies available to quickly and easily convert from one beam distribution to another in the field.

Accessories Filters and lenses may only be installed with Accessory Holder, Snoot or Barn Doors (order separately) • Louver may only be installed with Accessory Holder or Snoot (order separately) • Accessory Holder, Snoot or Barn Doors are externally mounted and attach to fixture using three set screws • Up to two of any combination of filters, lenses and louver may be installed simultaneously.

Juno Universal Track Adapter Universally compatible with both Trac-Master 1-circuit or 2-circuit track, Trac-Lites track, monopoints and special mountings • Also UL Recognized for use on ConTech® LT Series track • Copper alloy contacts provide precise spring action – no arcing and will not take a set • True, positive electrical ground • On/off switch included • Patented embossed polarity arrows on bottom of adapter • Spring-loaded positive latch with embossed polarity arrows secures track light to track • Two-position power contact provided for two-circuit application.

Alternate TEK/HTEK Track Adapter Compatible with either Juno TEK or HTEK track systems • System specific and assembled to track fixture • Integrally polarized construction to prevent reverse installation – only allows insertion in proper orientation • Rotary circuit selector enables simple switching between circuits • Integral on/off switch enables individual fixtures to be switched for servicing.

Alternate GTYPE Track Adapter Compatible with track systems based on GES type track, including Lithonia LT Commercial Track (not LTS type) • System specific and assembled to track fixture • Consult factory for additional information.

Alternate HTYPE Track Adapter Compatible with track systems which use a H-type track adapter, including Lithonia LTS Decorative Track (not LT type) • System specific and assembled to track fixture • Two-position power contact provided for two-circuit application • Consult factory for additional information.

Alternate LTYPE Track Adapter Compatible with track systems which use a L-type track adapter • System specific and assembled to track fixture • Two-position power contact provided for two-circuit application • Consult factory for additional information.

Aiming 360° horizontal coverage • Greater than 90° vertical aiming capability.

Labels UL and C-UL Listed • Union made • Assembled in U.S.A. • DesignLights Consortium® qualified where noted in Performance Data; HTEK option excluded. • ENERGY STAR® certified.

Government Procurement

BAA – Buy America(n) Act: Product qualifies as a domestic end product under the Buy American Act as implemented in the FAR and DFARS. Product also qualifies as manufactured in the United States under DOT Buy America regulations.

BABA – Build America Buy America: Product qualifies as produced in the United States under the definitions of the Build America, Buy America Act.

Please refer to www.acuitybrands.com/buy-american for additional information.

Warranty 5-year limited warranty. This is the only warranty provided and no other statements in this specification sheet create any warranty of any kind. All other express and implied warranties are disclaimed. Complete warranty terms located at: www.acuitybrands.com/support/warranty/terms-and-conditions.

Note: Actual performance may differ as a result of end-user environment and application.

All values are design or typical values, measured under laboratory conditions at 25 °C.

Specifications subject to change without notice.

ConTech is a registered trademark of ConTech Lighting.



TRAC-MASTER®

Classics

43W FLAT BACK CYLINDER LED

T286L

ORDERING INFORMATION

Ordering Examples: T286L 30K 80CRI PDIM SP WH, T286L TEK 30K 90CRI PDIM SP BL

Series	Mounting Adapter Type	Color Temperature	Color Rendering Index	Dimming Compatibility
T286L 43W Flat Back Cylinder LED	(Blank) Juno Universal 120V Track Adapter HTEK¹ HTEK 277V Track Adapter TEK TEK 120V Track Adapter GTYPE G-Type Track Adapter HTYPE H-Type Track Adapter LTYPE L-Type Track Adapter See page 5 for Direct Canopy Mount Option (CPY) specifications.	27K 2700K 30K 3000K 35K 3500K 40K 4000K	80CRI 80 CRI 90CRI 90 CRI	OFF¹ On/Off (Non-Dimming) PDIM Phase Dimmable

Distribution	Finish
SP Spot	BL Black
NFL Narrow Flood	SL Silver
FL Flood	WH White

Accessories (Order Separately)					
T770BL	4 ¹¹ / ₁₆ " Dia. Accessory Holder - Black	XBAFLBL 469²	Cross Baffle - Black	SOLITE 469²	Uniformity Lens (Solite)
T770SL	4 ¹¹ / ₁₆ " Dia. Accessory Holder - Silver	T5774BL 469	4 ¹¹ / ₁₆ " Dia. Barn Door Accessory - Black	PRISM 469²	Prismatic Spread Lens
T770WH	4 ¹¹ / ₁₆ " Dia. Accessory Holder - White	CGF 469²	Color Glass Filter	LSPREAD 469²	Linear Spread Lens
T5788BL 469	Snoot - Black	DGF 469²	Dichroic Glass Filter	TR10 SPT	Spot Optical Assembly
EYEBROWBL 469²	EyeBrow - Black	UVF 469²	UV Filter	TR10 NFLD	Narrow Flood Optical Assembly
HCLBL 469²	Hexcell Louver - Black	DIFF 469²	Diffusion Lens	TR10 FLD	Flood Optical Assembly
CCLBL 469²	Cube Cell Louver - Black			T40N³	Monopoint Canopy

See specification sheet [D1.2.2](#) for details.Other accessories can be found on specification sheet [D1.2.0](#).

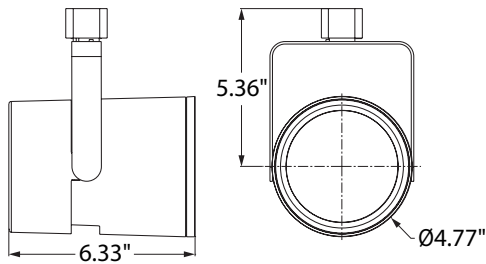
Notes:

- HTEK versions available with OFF option only, and OFF option only available with HTEK version only; HTEK option not qualified for DLC®.
- Accessory Holder, Snoot or Barn Doors required to install filters or lenses; Accessory Holder or Snoot required to install louver.
- Add finish code to complete catalog number (Example: T40N WH).

43W FLAT BACK CYLINDER LED

T286L

DIMENSIONS



ELECTRICAL DATA

Input Voltage	120V	277V
Input Current (max.)	0.40A	0.17A
Power Factor	>0.99	>0.98
T.H.D.	<10%	<10%

PERFORMANCE DATA^{1,2}

Luminaire Catalog	Voltage	Input Wattage	Total Lumen Output	Lumens Per Watt	Rated Life	DLC
T286L G3 27K 80CRI SP	120V	42.8	3318	78	50,000	
T286L G3 27K 80CRI NFL	120V	42.8	3293	77	50,000	
T286L G3 27K 80CRI FL	120V	42.8	3586	84	50,000	X
T286L G3 27K 90CRI SP	120V	42.8	2930	68	50,000	
T286L G3 27K 90CRI NFL	120V	42.8	2908	68	50,000	
T286L G3 27K 90CRI FL	120V	42.8	3167	74	50,000	
T286L G3 30K 80CRI SP	120V	42.8	3435	80	50,000	X
T286L G3 30K 80CRI NFL	120V	42.8	3409	80	50,000	X
T286L G3 30K 80CRI FL	120V	42.8	3713	87	50,000	X
T286L G3 30K 90CRI SP	120V	42.8	3027	71	50,000	
T286L G3 30K 90CRI NFL	120V	42.8	3004	70	50,000	
T286L G3 30K 90CRI FL	120V	42.8	3271	76	50,000	
T286L G3 35K 80CRI SP	120V	42.8	3539	83	50,000	X
T286L G3 35K 80CRI NFL	120V	42.8	3512	82	50,000	X
T286L G3 35K 80CRI FL	120V	42.8	3825	89	50,000	X
T286L G3 35K 90CRI SP	120V	42.8	3124	73	50,000	
T286L G3 35K 90CRI NFL	120V	42.8	3100	72	50,000	
T286L G3 35K 90CRI FL	120V	42.8	3376	79	50,000	
T286L G3 40K 80CRI SP	120V	42.8	3609	84	50,000	X
T286L G3 40K 80CRI NFL	120V	42.8	3581	84	50,000	X
T286L G3 40K 80CRI FL	120V	42.8	3900	91	50,000	X
T286L G3 40K 90CRI SP	120V	42.8	3235	76	50,000	
T286L G3 40K 90CRI NFL	120V	42.8	3210	75	50,000	
T286L G3 40K 90CRI FL	120V	42.8	3496	82	50,000	X

Notes:

- 1 Performance data, including Rated Life, is based on measurements of an individual fixture operating at 120V in a 25°C ambient.
- 2 HTEK mounting option not qualified for DLC®.

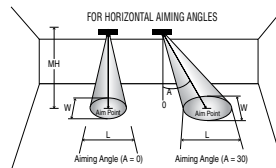
43W FLAT BACK CYLINDER LED

T286L

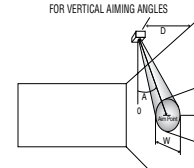
PHOTOMETRICS

CBCP • Centerbeam candlepower
FC • Footcandles at beam center (aim point)

In vertical aiming applications, aim point (X) is determined by dividing distance from the wall (D) by the tangent of the desired aim angle (A) (0.5774 for 30°, 1.0 for 45°, 1.732 for 60°).


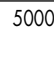
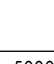


Horizontal Aiming Angles



Vertical Aiming Angles



Fixture	Beam Type	Beam Spread	Rated Life	CBCP	0°				30°				30°					45°					60°				
					MH	FC	L	W	FC	L	W	D	FC	X	L	W	FC	X	L	W	D	FC	X	L	W		
T286L 43W LED, 3000K, 80CRI Spot	SP	15° 	50000	26812	12	186	3.2	3.2	121	4.3	3.7	4	209	6.9	4.5	2.1	592	4.0	2.2	1.5	8	272	4.6	2.9	2.5		
					14	137	3.7	3.7	89	5.0	4.3	6	93	10.4	6.8	3.2	263	6.0	3.3	2.3	10	174	5.8	3.6	3.1		
					16	105	4.3	4.3	68	5.7	4.9	8	52	13.9	9.0	4.3	148	8.0	4.3	3.0	12	121	6.9	4.3	3.7		
					18	83	4.8	4.8	54	6.4	5.5	10	34	17.3	11.3	5.3	95	10.0	5.4	3.8	14	89	8.1	5.0	4.3		
					20	67	5.3	5.3	44	7.2	6.2	12	23	20.8	13.5	6.4	66	12.0	6.5	4.5	16	68	9.2	5.7	4.9		
T286L 43W LED, 3000K, 80CRI Narrow Flood	NFL	24° 	50000	12525	6	348	2.5	2.5	226	3.4	2.9	3	174	5.2	5.9	2.5	492	3.0	2.7	1.8	6	226	3.5	3.4	2.9		
					8	196	3.4	3.4	127	4.6	3.9	4	98	6.9	7.8	3.4	277	4.0	3.5	2.4	7	166	4.0	4.0	3.4		
					10	125	4.2	4.2	81	5.7	4.9	5	63	8.7	9.8	4.2	177	5.0	4.4	3.0	8	127	4.6	4.6	3.9		
					12	87	5.1	5.1	56	6.9	5.9	6	43	10.4	11.7	5.1	123	6.0	5.3	3.6	9	100	5.2	5.2	4.4		
					14	64	5.9	5.9	42	8.0	6.8	7	32	12.1	13.7	5.9	90	7.0	6.2	4.2	10	81	5.8	5.7	4.9		
T286L 43W LED, 3000K, 80CRI Flood	FL	42° 	50000	6298	5	252	3.9	3.9	164	5.4	4.5	2	197	3.5	11.2	3.1	557	2.0	3.6	2.2	4	256	2.3	4.3	3.6		
					6	175	4.6	4.6	114	6.5	5.3	3	87	5.2	16.7	4.6	247	3.0	5.4	3.3	5	164	2.9	5.4	4.5		
					7	129	5.4	5.4	83	7.6	6.2	4	49	6.9	22.3	6.2	139	4.0	7.3	4.4	6	114	3.5	6.5	5.3		
					8	98	6.2	6.2	64	8.7	7.1	5	31	8.7	**	7.7	89	5.0	9.1	5.5	7	83	4.0	7.6	6.2		
					9	78	6.9	6.9	51	9.7	8.0	6	22	10.4	**	9.3	62	6.0	10.9	6.5	8	64	4.6	8.7	7.1		

**Due to steep aiming angle, length of beam extends beyond 25'.

CRI/CCT Multiplier		
CRI	CCT	Multiplier
80	27K	0.97
	30K	1.00
	35K	1.04
	40K	1.05
90	27K	0.79
	30K	0.82
	35K	0.85
	40K	0.87


TRAC-MASTER®

Classics

43W FLAT BACK CYLINDER LED

T286L

Project: _____

Fixture Type: _____

Location: _____

Contact/Phone: _____


DIRECT CANOPY MOUNT

PRODUCT DESCRIPTION

With its integral driver, the cylindrical aesthetic of the T286L Series offers the simplest of form factors. It is designed with a unique, patented, precision optical system which produces the most uniform spot, narrow flood or flood beam distributions possible. The 43W T286L Series can deliver up to 3900 lumens, utilizing less than 1/3 of the energy of halogen equivalents and having a rated life of 50,000 hours. It is available in 2700K, 3000K, 3500K and 4000K color temperatures and 80 or 90 CRI versions. These fixtures also have an integral, bayonet-mounted optical system that enables quick conversion between beam spreads. Consult factory for SpectralWhite option. The Canopy Mount version is designed to mount over a standard j-box and is available with a variety of performance options including 277V operation, phase-dimming, and 0-10V dimming.



PRODUCT SPECIFICATIONS

Construction Die cast aluminum housing and vented concealed heat sink provides outstanding thermal management, yielding 70% average lumen maintenance at 50,000 hours of operation • Passively-cooled design – no moving parts to break or wear-out • Fashionable, elegant design complements any decor • Available in white or black painted finishes.

LED High performance LED array provides outstanding reliability, performance and color quality/consistency • 2700K, 3000K, 3500K or 4000K white phosphor high performance LEDs • Chromaticity range within a 3-step MacAdam Ellipse • 80 CRI minimum on standard product • Optional high CRI versions offer 90 CRI minimum.

Electrical/Driver Multi-volt (120-277V, 50/60Hz) phase-dimmable or 0-10V dimmable driver mounted in a deep canopy • 0-10V dimming requires two (2) additional low-voltage wires to be pulled.

Dimming MVOLT versions are phase-dimmable (120V only) down to 10% or less using high quality, factory-approved dimmers - see [T286L-DIM](#) • MVOLT versions are also 0-10V dimmable down to as low as 1% and require two (2) additional low-voltage wires to be pulled.

Reflector Precision designed patented optical system provides either spot, narrow flood or flood beam distributions • Patented, multi-step optical system ensures a properly color-mixed beam • Accessory optical assemblies available to quickly and easily convert from one beam distribution to another in the field.

Accessories Filters and lenses may only be installed with Accessory Holder, Snoot or Barn Doors (order separately) • Louver may only be installed with Accessory Holder or Snoot (order separately) • Accessory Holder, Snoot or Barn Doors are externally mounted and attach to fixture using three set screws • Up to two of any combination of filters, lenses and louver may be installed simultaneously.

Mounting Installs over a standard electrical j-box • Accent light is permanently, factory-assembled to the mounting canopy • Universal mounting plate accommodates octagon box and typical j-box mud rings • Mounting plate designed to be installed snug to mounting surface • May be ceiling or wall mounted in any orientation • Driver is assembled into mounting canopy – see Dimensions section for canopy type and dimensions based on option selected • Canopy is securely tethered to mounting plate to facilitate wiring terminations.

Aiming 360° horizontal coverage • Greater than 180° vertical aiming capability.

Labels UL and C-UL Damp Location Listed • Union made • Assembled in U.S.A.

Government Procurement

BAA – Buy America(n) Act: Product qualifies as a domestic end product under the Buy American Act as implemented in the FAR and DFARS. Product also qualifies as manufactured in the United States under DOT Buy America regulations.

BABA – Build America Buy America: Product qualifies as produced in the United States under the definitions of the Build America, Buy America Act.

Please refer to www.acuitybrands.com/buy-american for additional information.

Warranty 5-year limited warranty. This is the only warranty provided and no other statements in this specification sheet create any warranty of any kind. All other express and implied warranties are disclaimed. Complete warranty terms located at: www.acuitybrands.com/support/warranty/terms-and-conditions.

Note: Actual performance may differ as a result of end-user environment and application.
All values are design or typical values, measured under laboratory conditions at 25 °C.
Specifications subject to change without notice.

TRAC-MASTER®

Classics

43W FLAT BACK CYLINDER LED**T286L****DIRECT CANOPY MOUNT****ORDERING INFORMATION**

Ordering Example: T286L CPY 30K 80CRI MVOLT NFL BL

Series	Mounting Adapter Type	Color Temperature	Color Rendering Index	Input Voltage ²	Distribution	Finish
T286L 43W Flat Back Cylinder LED	CPY Canopy Mounting	27K 2700K 30K 3000K 35K 3500K 40K 4000K	80CRI 80 CRI 90CRI 90 CRI	MVOLT 120V/277V Operation	SP Spot NFL Narrow Flood FL Flood	BL Black WH White

Accessories (Order Separately)					
T770BL	4 ¹¹ / ₁₆ " Dia. Accessory Holder - Black	XBAFLBL 469¹	Cross Baffle - Black	SOLITE 469¹	Uniformity Lens (Solite)
T770SL	4 ¹¹ / ₁₆ " Dia. Accessory Holder - Silver	T5774BL 469	4 ¹¹ / ₁₆ " Dia. Barn Door Accessory - Black	PRISM 469¹	Prismatic Spread Lens
T770WH	4 ¹¹ / ₁₆ " Dia. Accessory Holder - White			LSPREAD 469¹	Linear Spread Lens
T5788BL 469	Snoot - Black	CGF 469¹	Color Glass Filter	TR10 SPT	Spot Optical Assembly
EYEBROWBL 469¹	EyeBrow - Black	DGF 469¹	Dichroic Glass Filter	TR10 NFLD	Narrow Flood Optical Assembly
HCLBL 469¹	Hexcell Louver - Black	UVF 469¹	UV Filter	TR10 FLD	Flood Optical Assembly
CCLBL 469¹	Cube Cell Louver - Black	DIFF 469¹	Diffusion Lens		

See specification sheet [D1.2.2](#) for details.Other accessories can be found on specification sheet [D1.2.0](#).

Notes:

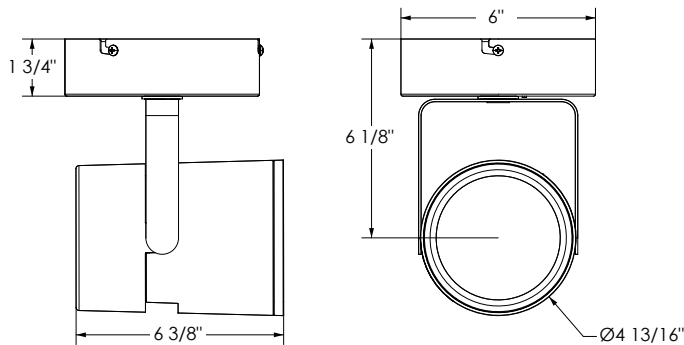
- 1 Accessory Holder, Snoot or Barn Doors required to install filters or lenses; Accessory Holder or Snoot required to install louver.
- 2 MVOLT option can be either phase-dimmed (120V) or 0-10V dimmed.

43W FLAT BACK CYLINDER LED

T286L

DIRECT CANOPY MOUNT

DIMENSIONS



ELECTRICAL DATA		
Input Voltage	120V	277V
Input Wattage (typ.)	42.0	42.1
Input Current (max.)	0.39A	0.17A
Power Factor	>0.99	>0.98
T.H.D.	<10%	<10%

PERFORMANCE DATA¹

Luminaire Catalog	Voltage	Input Wattage	Total Lumen Output	Lumens Per Watt	Rated Life
T286L G3 27K 80CRI SP	120V	42.0	3318	78	50,000
T286L G3 27K 80CRI NFL	120V	42.0	3293	77	50,000
T286L G3 27K 80CRI FL	120V	42.0	3586	84	50,000
T286L G3 27K 90CRI SP	120V	42.0	2930	68	50,000
T286L G3 27K 90CRI NFL	120V	42.0	2908	68	50,000
T286L G3 27K 90CRI FL	120V	42.0	3167	74	50,000
T286L G3 30K 80CRI SP	120V	42.0	3435	80	50,000
T286L G3 30K 80CRI NFL	120V	42.0	3409	80	50,000
T286L G3 30K 80CRI FL	120V	42.0	3713	87	50,000
T286L G3 30K 90CRI SP	120V	42.0	3027	71	50,000
T286L G3 30K 90CRI NFL	120V	42.0	3004	70	50,000
T286L G3 30K 90CRI FL	120V	42.0	3271	76	50,000
T286L G3 35K 80CRI SP	120V	42.0	3539	83	50,000
T286L G3 35K 80CRI NFL	120V	42.0	3512	82	50,000
T286L G3 35K 80CRI FL	120V	42.0	3825	89	50,000
T286L G3 35K 90CRI SP	120V	42.0	3124	73	50,000
T286L G3 35K 90CRI NFL	120V	42.0	3100	72	50,000
T286L G3 35K 90CRI FL	120V	42.0	3376	79	50,000
T286L G3 40K 80CRI SP	120V	42.0	3609	84	50,000
T286L G3 40K 80CRI NFL	120V	42.0	3581	84	50,000
T286L G3 40K 80CRI FL	120V	42.0	3900	91	50,000
T286L G3 40K 90CRI SP	120V	42.0	3235	76	50,000
T286L G3 40K 90CRI NFL	120V	42.0	3210	75	50,000
T286L G3 40K 90CRI FL	120V	42.0	3496	82	50,000

Notes:

¹ Performance data, including Rated Life, is based on measurements of an individual fixture operating at 120V in a 25°C ambient.

43W FLAT BACK CYLINDER LED

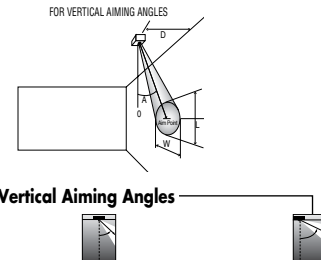
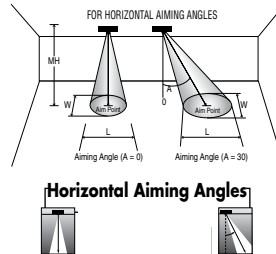
T286L




DIRECT CANOPY MOUNT

PHOTOMETRICS

CBCP • Centerbeam candlepower
FC • Footcandles at beam center (aim point)

In vertical aiming applications, aim point (X) is determined by dividing distance from the wall (D) by the tangent of the desired aim angle (A) (0.5774 for 30°, 1.0 for 45°, 1.732 for 60°).



Fixture	Beam Type	Beam Spread	Rated Life	CBCP	0°				30°			30°					45°				60°				
					MH	FC	L	W	FC	L	W	D	FC	X	L	W	FC	X	L	W	D	FC	X	L	W
T286L 43W LED, 3000K, 80CRI Spot	SP	15° 	50000	26812	12	186	3.2	3.2	121	4.3	3.7	4	209	6.9	4.5	2.1	592	4.0	2.2	1.5	8	272	4.6	2.9	2.5
					14	137	3.7	3.7	89	5.0	4.3	6	93	10.4	6.8	3.2	263	6.0	3.3	2.3	10	174	5.8	3.6	3.1
					16	105	4.3	4.3	68	5.7	4.9	8	52	13.9	9.0	4.3	148	8.0	4.3	3.0	12	121	6.9	4.3	3.7
					18	83	4.8	4.8	54	6.4	5.5	10	34	17.3	11.3	5.3	95	10.0	5.4	3.8	14	89	8.1	5.0	4.3
					20	67	5.3	5.3	44	7.2	6.2	12	23	20.8	13.5	6.4	66	12.0	6.5	4.5	16	68	9.2	5.7	4.9
T286L 43W LED, 3000K, 80CRI Narrow Flood	NFL	24° 	50000	12525	6	348	2.5	2.5	226	3.4	2.9	3	174	5.2	5.9	2.5	492	3.0	2.7	1.8	6	226	3.5	3.4	2.9
					8	196	3.4	3.4	127	4.6	3.9	4	98	6.9	7.8	3.4	277	4.0	3.5	2.4	7	166	4.0	4.0	3.4
					10	125	4.2	4.2	81	5.7	4.9	5	63	8.7	9.8	4.2	177	5.0	4.4	3.0	8	127	4.6	4.6	3.9
					12	87	5.1	5.1	56	6.9	5.9	6	43	10.4	11.7	5.1	123	6.0	5.3	3.6	9	100	5.2	5.2	4.4
					14	64	5.9	5.9	42	8.0	6.8	7	32	12.1	13.7	5.9	90	7.0	6.2	4.2	10	81	5.8	5.7	4.9
T286L 43W LED, 3000K, 80CRI Flood	FL	42° 	50000	6298	5	252	3.9	3.9	164	5.4	4.5	2	197	3.5	11.2	3.1	557	2.0	3.6	2.2	4	256	2.3	4.3	3.6
					6	175	4.6	4.6	114	6.5	5.3	3	87	5.2	16.7	4.6	247	3.0	5.4	3.3	5	164	2.9	5.4	4.5
					7	129	5.4	5.4	83	7.6	6.2	4	49	6.9	22.3	6.2	139	4.0	7.3	4.4	6	114	3.5	6.5	5.3
					8	98	6.2	6.2	64	8.7	7.1	5	31	8.7	**	7.7	89	5.0	9.1	5.5	7	83	4.0	7.6	6.2
					9	78	6.9	6.9	51	9.7	8.0	6	22	10.4	**	9.3	62	6.0	10.9	6.5	8	64	4.6	8.7	7.1

**Due to steep aiming angle, length of beam extends beyond 25'.

CRI/CCT Multiplier		
CRI	CCT	Multiplier
80	27K	0.97
	30K	1.00
	35K	1.04
	40K	1.05
90	27K	0.79
	30K	0.82
	35K	0.85
	40K	0.87