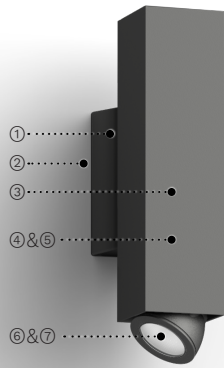


PROJECT NAME:

QUANTITY:

TYPE:

ORDERING CODE:



- ① Robust cast aluminum wall mounting box.
- ② Sturdy galvanized steel mounting plate.
- ③ Seamless extruded aluminum square housing.
- ④ Asymmetric heatsink for perfect blend of clean aesthetic and efficient heat dissipation.
- ⑤ Sleek and durable sealed cast aluminum up and down light assembly.
- ⑥ 30° tilt and 355° rotation for light adjustability.
- ⑦ Faceted specular aluminum reflector offers smooth lighting and reduced glare (NR/FLD/VWD). While TIR collimator lens focuses light in a very narrow beam.



SQP402

## MATERIALS

Syrios Pro is made of corrosion resistant 360 aluminum alloy with a copper (CU) content of less than 0.1%. The main housing is made of seamless 6063 extruded aluminum, with an integrally sealed LED light module designed for optimal heat dissipation, and lighting performance.

## ELECTRICAL DRIVER

Driver is 0-10V dimming-ready (dims to 1%) with: 120-277 multi-volt (50-60Hz) or 347-480 high-volt (50-60Hz), operating temperature range of -30°C/-22°F to 45°C/113°F, output over voltage protection, output over current protection and output short circuit protection with auto-recovery.

## LED LIGHT ENGINE

Offered in 2700K/3000K/3500K/4000K CCT with 80 CRI. 70% LED lumen maintenance at 60,000 hours (L70B50) based on IESNA. LM-80-08 LED extrapolated life, calculated per IESNA TM-21-21. Optional true amber LED for turtle sensitive areas. Wavelengths: 585nm to 597nm. RGBW with white CCT available in 3000K and 4000K. Quad chip technology, enabling optimal color mixing under each individual optic.

## FINISH

Five-stage preparation process including preheating of cast aluminum parts for air extraction, and an environmentally friendly alloy sealant. Polyester powder coating is applied through an electrostatic process and oven cured for long term finish.

## CERTIFICATION

UL Certified to Canadian and U.S. safety standards. Certified for use in wet locations. Rated IP65. Photometric testing performed by an independent laboratory in accordance with IES LM-79-08 standards at 25°C. Actual performance may differ as a result of end-user environment and application.

## WARRANTY

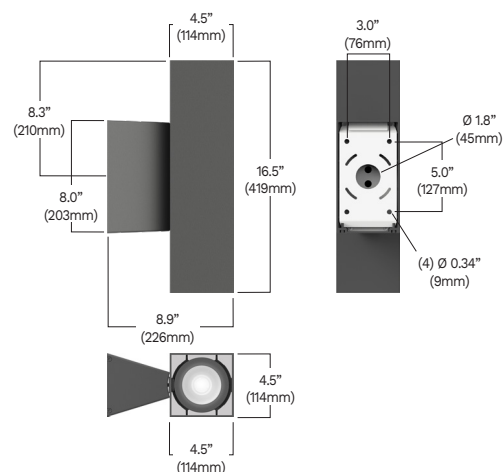
5-year limited warranty. This is the only warranty provided and no other statements in this specification sheet create any warranty of any kind. All other express and implied warranties are disclaimed. Complete warranty terms located at: <https://www.acuitybrands.com/support/warranty/terms-and-conditions>

## MOUNTING

The mounting plate is designed to fit on a 4" (102mm) octagonal electrical box using 3.5" (89mm) C/C mounting holes. Additional mounting holes are provided as per site requirements.

## MEASUREMENTS

**Maximum weight:** 13.7 lbs (6.2 kg)




## LUMINIS.COM

Toll free: (866) 586-4647 | Fax: (514) 683-8872 | Email: [info@luminis.com](mailto:info@luminis.com)  
260 Labrosse, Pointe-Claire (QC) Canada H9R 5L5

SQP402  
Rev. 05/07/25

## ORDERING CODE

*SERIES	*DOWNLIGHT OUTPUT	*DOWNLIGHT DISTRIBUTION	*UPLIGHT OUTPUT	*UPLIGHT DISTRIBUTION	CCT	*VOLTAGE
<b>SQP402</b> 	<u>Static White</u> <b>L1L10</b> 1344 lm / 12w <b>L1L20</b> 2335 lm / 23w <b>L1L30</b> 2840 lm / 30w  <u>RGBW</u> <b>L1RGBW<sup>14</sup></b> 338 lm / 24w  <u>True Amber</u> <b>L1LK2A<sup>4</sup></b> 544 lm / 9w  Delivered lumens calculated at 4000K/80CRI except for RGBW and amber. Flood optic distribution. Typical power consumption. Refer to LCF table for outputs at other CCTs.	<b>NR</b> Narrow optic 11° <b>FLD</b> Flood optic 30° <b>VWD</b> Very wide optic 55°	<u>Static White</u> <b>UL1L10</b> 1344 lm / 12w <b>UL1L20</b> 2335 lm / 23w <b>UL1L30</b> 2840 lm / 30w  <u>RGBW</u> <b>UL1RGBW<sup>15</sup></b> 338 lm / 24w  <u>True Amber</u> <b>UL1LK2A<sup>5</sup></b> 544 lm / 9w  Delivered lumens calculated at 4000K/80CRI except for RGBW and amber. Flood optic distribution. Typical power consumption. Refer to LCF table for outputs at other CCTs.	<b>UNR</b> Uplight narrow optic 11° <b>UFLD</b> Uplight flood optic 30° <b>UVWD</b> Uplight very wide optic 55°	<b>27K</b> 2700K <b>30K</b> 3000K <b>35K</b> 3500K <b>40K</b> 4000K	<b>120</b> 120V <b>277</b> 277V <b>347</b> 347V <b>480</b> 480V <b>HVOLT</b> 347V-480V <b>MVOLT</b> 120V-277V
	<u>Very Narrow Distribution</u> <b>L1L06</b> 661 lm / 15w  Delivered lumens calculated at 4000K/80CRI. Very narrow optic distribution. Typical power consumption. Refer to LCF table for outputs at other CCTs.	<b>VNR</b> Very narrow optic 6°	<u>Very Narrow Distribution</u> <b>UL1L06</b> 661 lm / 15w  Delivered lumens calculated at 4000K/80CRI. Very narrow optic distribution. Typical power consumption. Refer to LCF table for outputs at other CCTs.	<b>UVNR</b> Uplight very narrow optic 6°	Required field for all outputs except True amber.	

DOWNLIGHT LENS	UPLIGHT LENS	DOWNLIGHT LOUVERS	UPLIGHT LOUVERS	CONDUIT COVER	PHOTOCELL	SURGE PROTECTOR
<b>ESL</b> Elliptical spread lens <sup>2,4</sup> <b>SL</b> Solite lens <sup>3,4</sup>	<b>UESL</b> Uplight elliptical spread lens <sup>2,5</sup> <b>USL</b> Uplight solite lens <sup>3,5</sup>	<b>HL</b> Hexcell louver	<b>UHL</b> Uplight hexcell louver	<b>SWK</b> Decorative cover for 3/4" conduit junction box <sup>6</sup>	<b>PH</b> Photocell <sup>7,8</sup>	<b>SP</b> Surge protector

CONTROLS	DUAL SWITCHING	EMERGENCY	*FINISH	WOOD FINISH <sup>12</sup>	ENVIRONMENT
<b>NLTAIR-MS</b> nLight AIR 2.0 wireless control with occupancy detection <sup>8</sup>  <b>NLTAIR2</b> nLight AIR 2.0 wireless control <sup>8</sup>	<b>DS</b> Dual circuit switching (independent uplight & downlight control)	<b>REM7</b> Remote emergency battery, 90 min, 7W <sup>9</sup>	<b>BKT</b> Jet black <b>BZT</b> Bronze <b>CHT</b> Champagne <b>DGT</b> Gun metal <b>GRT</b> Titanium gray <b>MST</b> Matte silver <b>SGT</b> Steel gray <b>WHT</b> Snow white  <b>CMC</b> Custom matched color <sup>10</sup> <b>RAL</b> RAL color <sup>11</sup>	<b>ADG</b> American douglas <b>BRC</b> Birch <b>CHN</b> Chestnut <b>CRY</b> Cherry <b>KNP</b> Knotty pine <b>MPL</b> Maple <b>OFL</b> Oak <b>RSW</b> Rosewood <b>TEK</b> Teak <b>WLN</b> Walnut	<b>MG</b> Marine grade paint <sup>13</sup> <b>NT</b> Natatorium suitable <sup>14</sup>

### NOTES

- \*- Denotes a required field
- 1- Delivered lumens with all channels turned on. RGBW uses DMX512/RDM as a control input. Available only with 30K, 40K. Not available with 347, 480, HVOLT.
- 2- 37° x 80°.
- 3- Lumen conversion factor (LCF) 0.9.
- 4- Not available with HL.
- 5- Not available with UHL.
- 6- Painted to match fixture color.
- 7- Not available with NLTAIR2, NLTAIR-MS, REM7. If PH and DS are selected, PH will handle the on/off functionality for both light modules simultaneously. User will only have manual control over dimming feature of each module.
- 8- Not available with 480V, HVOLT.
- 9- Remote mount 50ft - 12" (305mm) square enclosure with access cover. The remote enclosure must be interior (cable by others). Emergency battery powers downlight module only. Not available with 347V, 480V, HVOLT, PH, NLTAIR2, NLTAIR2-MS.
- 10- Contact factory to coordinate custom matching color.
- 11- Specify RAL number.
- 12- Faux wood finish not applied to driver housing, lens frame or accessories. Additional delay required. Not compatible with marine grade paint or natatorium suitable.
- 13- Marine grade paint for harsh, coastal environment and exposure to salt water. Additional delay required.
- 14- Available only in WHT and BKT finish.

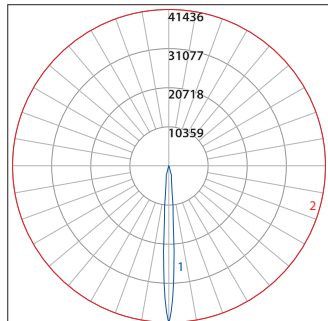
## LUMINIS.COM

Toll free: (866) 586-4647 | Fax: (514) 683-8872 | Email: info@luminis.com  
260 Labrosse, Pointe-Claire (QC) Canada H9R 5L5

SQP402  
Rev. 05/07/25

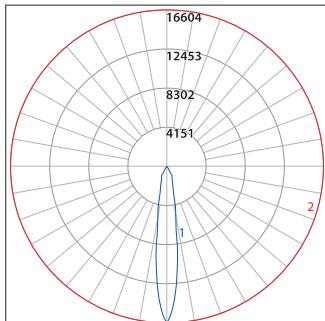
## TYPICAL PHOTOMETRY SUMMARY

SQP402-L1L06-VNR



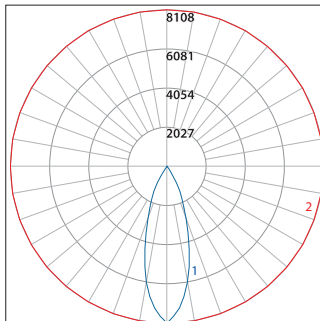
**Total Lms:** 661 Lumens  
**Total Input Watts:** 15 W  
**Efficacy:** 44.1 Lumens/Watt  
**BUG:** B1-U0-G0  
**CCT/CRI:** 4000K/80  
**Maximum Candela:** 41436 @ 0°

SQP402-L1L30-NR



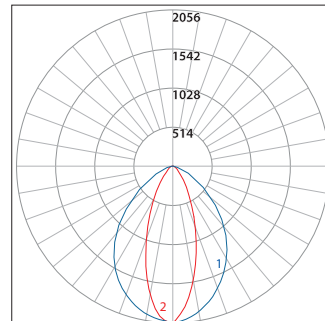
**Total Lms:** 2531 Lumens  
**Total Input Watts:** 30 W  
**Efficacy:** 84.1 Lumens/Watt  
**BUG:** B3-U0-G0  
**CCT/CRI:** 4000K/80  
**Maximum Candela:** 16604 @ 0°

SQP402-L1L30-FLD



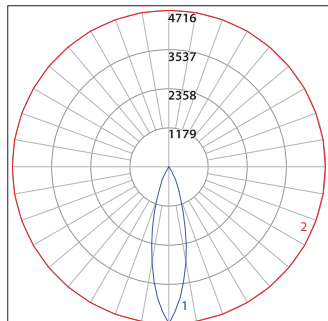
**Total Lms:** 2840 Lumens  
**Total Input Watts:** 30 W  
**Efficacy:** 94.7 Lumens/Watt  
**BUG:** B3-U0-G0  
**CCT/CRI:** 4000K/80  
**Maximum Candela:** 8107 @ 0°

SQP402-L1L30-FLD-ESL



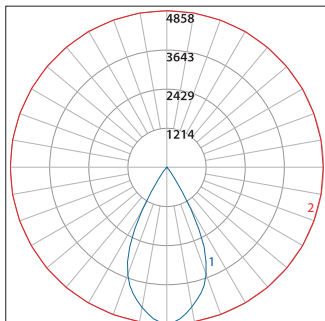
**Total Lms:** 2702 Lumens  
**Total Input Watts:** 28 W  
**Efficacy:** 96.5 Lumens/Watt  
**BUG:** B2-U0-G0  
**CCT/CRI:** 4000K/80  
**Maximum Candela:** 2657 @ 0°

SQP402-L1L30-FLD-HL



**Total Lms:** 1162 Lumens  
**Total Input Watts:** 30 W  
**Efficacy:** 38.7 Lumens/Watt  
**BUG:** B2-U0-G0  
**CCT/CRI:** 4000K/80  
**Maximum Candela:** 4716 @ 0°

SQP402-L1L30-VWD



**Total Lms:** 3035 Lumens  
**Total Input Watts:** 30 W  
**Efficacy:** 101.2 Lumens/Watt  
**BUG:** B3-U0-G0  
**CCT/CRI:** 4000K/80  
**Maximum Candela:** 4857 @ 0°

LUMEN CONVERSION FACTOR (LCF)		
CCT	CRI	LCF
2700K	80	0.91
3000K	80	0.94
3500K	80	0.98
4000K	80	1.00

All Photometry shown use the 80CRI 4000K LEDs.  
Please visit our web site [www.luminis.com](http://www.luminis.com) for complete I.E.S. file.

## LUMINIS.COM

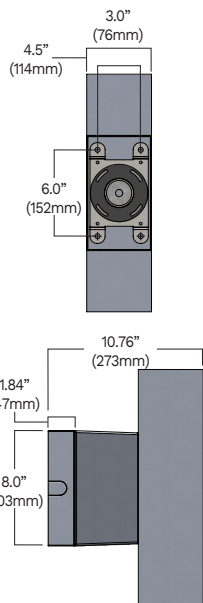
Toll free: (866) 586-4647 | Fax: (514) 683-8872 | Email: [info@luminis.com](mailto:info@luminis.com)  
260 Labrosse, Pointe-Claire (QC) Canada H9R 5L5

© 2025 Acuity Brands Lighting Canada, Inc. All rights reserved. Specifications subject to change without notice.

SQP402  
Rev. 05/07/25

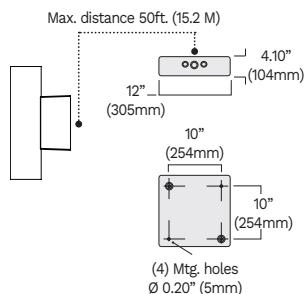
Page 3 of 4

## OPTION DETAILS



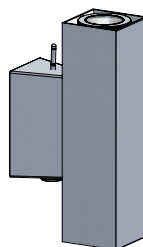
### SWK

Adaptor box for surface 3/4" conduit feed (4 sides plus back entry).



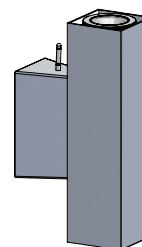
### REM7

Remote mount 120/277V emergency battery pack (1110 lm/90 min). Test switch provided within enclosure with 5" (127mm) leads.



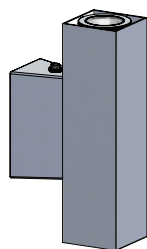
### NLTAIR-MS

nLight AIR 2.0 wireless control with occupancy detection mounted on the wall box.



### NLTAIR2

nLight AIR 2.0 wireless control mounted on the wall box.



### PH

Thermal button photocell mounted on wallbox. Instant turn-on. Standard 5-10 second turn-off time delay.