



HOLOBAY™

for Heavy Industrial Spaces



Typical Applications

- Automotive
- Cranes/Catwalks
- Foundries
- Heavy Industrial
- Manufacturing
- Pulp & Paper Mills
- Steel Mills

The next generation of robust round high bays for the most demanding industrial environments.

HOLOBAY™ is designed with features and unmatched electrical, environmental and thermal ratings to withstand the most demanding environments while providing the lowest total cost of ownership and energy savings. With superior efficiency, spacings and ease of installation, HOLOBAY™ is the perfect solution for your application

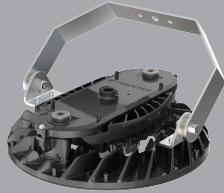
Precisely engineered die-cast aluminum and borosilicate prismatic glass solution with exceptional illumination, visual comfort and efficiency. HOLOBAY™ provides exceptional light output and long-life components help increase the life of the product and minimize maintenance costs.

HOLOBAY™ Applications

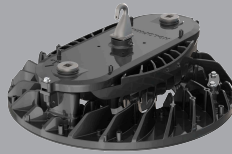


Mounting Options

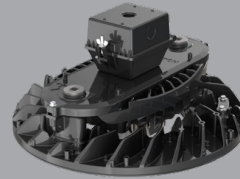
Yoke



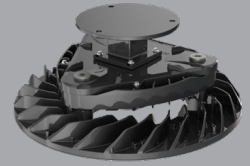
Hook



QD



Crane



Additional mounting options include Pendant/Stem, Wall mount, Loop, Remote, Inverted and UPH/PHCB.

Borosilicate Prismatic Glass Optics

improve vertical light levels while keeping horizontal lighting uniform. Available in focus, medium, narrow, wide and aisle distributions, our optics withstand dust and dirt and are resistant to chemicals and other degrading elements. Focus smooth, frosted glass and silicone options also available.



Maintenance-Friendly Hinged Driver Housing

allows for ease of maintenance and access to internal components while the fixture is installed.

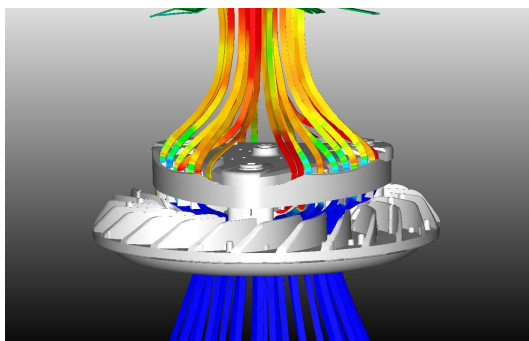


Embedded Controls

featuring nLight® Air and Bluetooth® to detect occupancy. Whether grouping in a zone or controlling individually, our suite of controls can help to provide additional energy savings and accelerate the return on investment.

XVOLT LED Driver Protection

XVOLT Zetashield™ driver is standard for 277-480V to help provide protection against a dropped neutral as well as immunity for common power quality issues.



Precisely engineered heat-dissipating fins promote natural air flow to keep heat away from electrical components.

Additional Features

- + Uplight for additional lumens above the fixture.
- + Lumens
 - HOLO1: 12,000 – 60,000 Lumens
 - HOLO2: 35,000 – 100,000 Lumens
- + Ratings
 - Wet Location
 - IP65 & IP66
 - NEMA 4X
 - IK8 and IK10



Warranty Five-year limited warranty. Full warranty terms located at <https://www.acuitybrands.com/support/warranty>
Product specifications may change without notice. Please contact your sales representative for the latest product information.